



 **Comfort Drive™**
STEERING



The 2009

VENTANA

Diesel Motorhome



 **NEWMARSM**

WHEN YOU KNOW THE DIFFERENCESM





THE NEWMAR DIFFERENCE



Over the past 40 years, Newmar has created a heritage devoted to quality, innovation, luxury and Amish craftsmanship.

Newmar products incorporate sound construction principles, such as the leveled and squared chassis, sub-floor structure that's integrated and welded to the chassis rail and insulation that makes them easy to heat and cool. We use innovative technologies, which include Comfort Drive® Steering, a real-world wiring system, and we test and weigh each vehicle to make sure it meets our high expectations. We also provide custom-built touches, like our hand-crafted cabinetry. With Newmar, you get the ultimate in luxury from a company that's dedicated to its roots and stands for the utmost in quality.

A



B



C



TRAVELING IN STYLE



An innovative RV, the 2009 Ventana Diesel Pusher is equipped with modern conveniences and must-have amenities that create the perfect environment for your travels. One new option puts complete control at your fingertips: the pre-programmed universal remote control.

Shown in 3936 floorplan with Café Latte Décor and Fall Spice Cabinetry with raised-panel glazed doors.

INTERIOR FEATURES

- A. Norcold® 12-Cubic-Foot Four-door Refrigerator—Optional
- B. Optional Round, Hardwood Dinette Table with Four Fixed Chairs
- C. Spacious Living Area Featuring Flexsteel® Furniture and Polished Porcelain Flooring



VENTANA



NEWMAR



RELAX...UNWIND...SLEEP



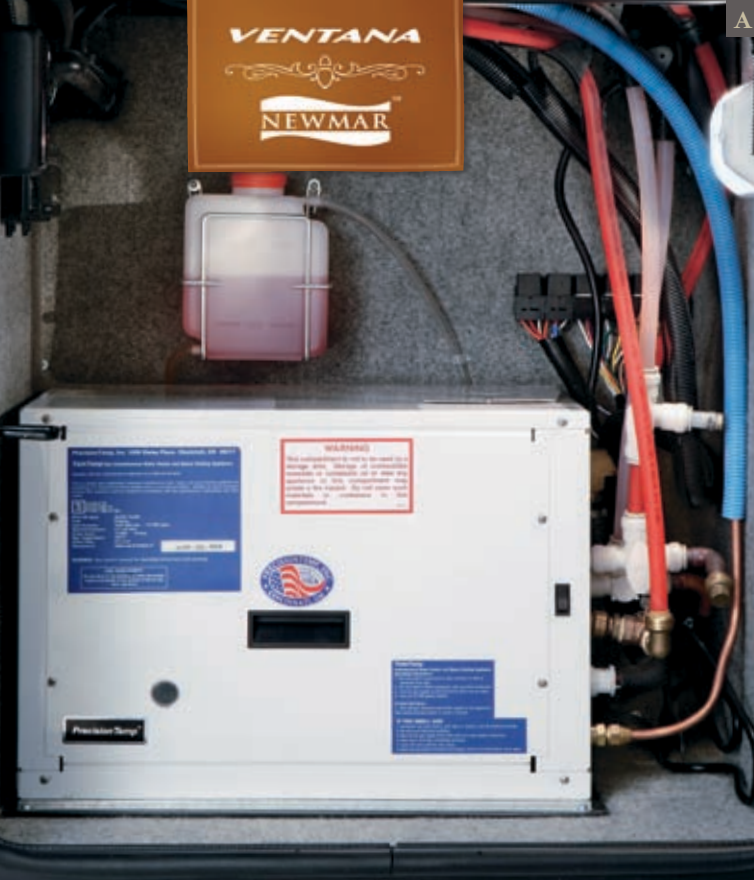
The bedroom offers everything needed for relaxing on the open road. The stylish wooden headboard highlights the queen or king bed that's outfitted with a quilted bedspread, shams and accent pillow. And standard entertainment features, such as the 22-inch LCD TV, DVD player and radio speakers with on/off switch, offer plenty of options when you're not quite ready to sleep.

Shown in 3936 floorplan with Café Latte Décor and Fall Spice Cabinetry with raised-panel glazed doors.

BEDROOM FEATURES

- A. Comfortaire® Air Mattress with Remote Control for Selecting Mattress Firmness (Optional)
- B. Bedroom Cabinets and Drawers for Storing Belongings
- C. Pullout Step in Bathroom Doubles as a Step-stool and Storage Drawer





COMPLETE CONTROL



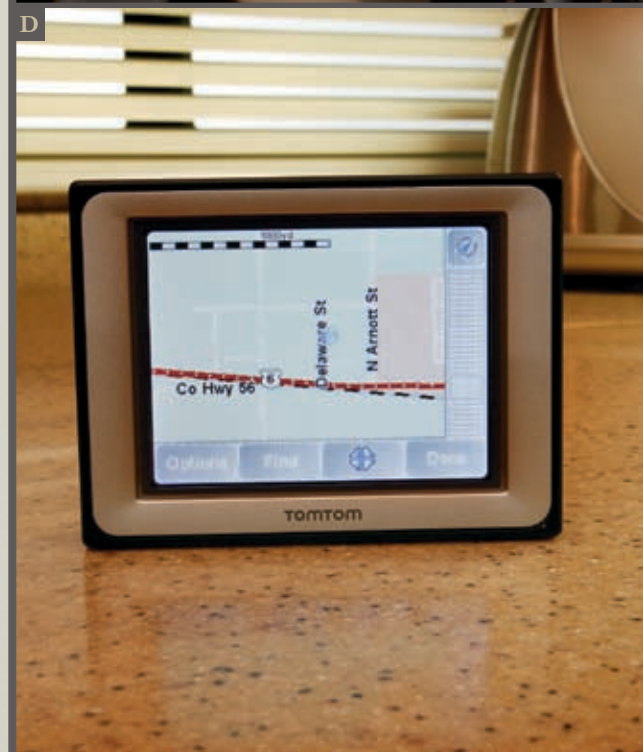
The Ventana's cockpit is loaded with features that give the driver more comfort and convenience when behind the wheel. An Ultraleather driver seat with six-way power, power lumbar and ergo-flex arms, rearview monitor system, Comfort Drive™ steering, VIP Smart Wheel and optional navigation system is just the beginning.



Comfort Drive steering reduces the driver's efforts behind the wheel and when controlling the coach in all situations. Parking, cornering and backing up are easier, due to improved maneuverability from automatically centering and correcting steering.

EXTERIOR & INTERIOR FEATURES

- A. Hydronic Zone Propane Heating System (Optional)
- B. Pass-through Exterior Storage with Optional Storage Trays
- C. Exterior Features Standard Full-Paint Masterpiece Finish™ with Front Protective Film
- D. Optional Dash Radio/CD Player Opens for Inserting and Ejecting CDs with Portable and Removable TomTom® Navigation System
- E. Cockpit Equipped with Comfort Drive Steering Adjustable Control

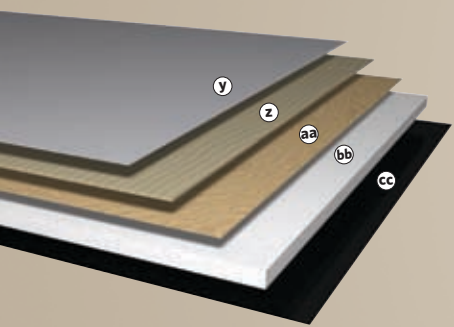




VENTANA

NAV
D Z R
I
P

NAV
D Z R
I
P



CEILING: R-VALUE=16

- a. BriteTEK™ Roof
- b. 9mm Wood Decking
- c. Fiberglass Batten Insulation
- d. A/C Ducting
- e. Aluminum Roof Truss
- f. Kraft Paper Vapor Barrier
- g. 5/8" Bead Foam
- h. 3/16" Panel
- i. Padded Vinyl Overlay

WALLS: R-VALUE=11

- j. 3/16" Plywood Interior Wall
- k. 5/8" Bead Foam
- l. Kraft Paper Vapor Barrier
- m. Fiberglass Batten Insulation
- n. 3/16" Plywood Exterior Wall
- o. Composite One-piece Gelcoat Exterior Sidewall
- p. 16" On-center Aluminum Framing with 3 1/2" Header

FLOORING: R-VALUE=16

- q. Carpet/Tile
- r. Carpet Padding
- s. 5/8" Floor Decking
- t. Fiberglass Batten Insulation
- u. 2" x 3" Wood Framing
- v. Polyethylene Moisture Barrier
- w. Foam Panels (Noise Protection)
- x. Aluminum Ducting

BASEMENT: R-VALUE=4
(INCLUDED IN FLOOR R-VALUE)

- y. Cargo Liner
- z. 3/8" Floor Decking
- aa. 3/16" Luan Panel
- bb. 1 1/2" Bead Foam
- cc. Aluminum Sheeting (Prevents Distortion)

- 1. 13.5M Penguin™ Heat Pump Central Air Conditioners (2)
- 2. One-piece Windshield
- 3. Coated Aluminum Wheels
- 4. Double-pane Tinted Safety-glass Windows
- 5. Side-hinged Baggage Doors with Optional Pullout Tray

NEWMAR TOTAL COMFORT™ CENTRAL AIR CONDITIONING

Experience RV air conditioning just like that found in site-built homes. Newmar's Total Comfort Central Air Conditioning is actually two separate, fully ducted systems: one to distribute incoming cool air, the other to quickly and effectively remove warm air from every living area.



PROTECTED C-CHANNELS

To keep the electrical wiring that runs through holes in the aluminum-frame C-channels from chafing, each hole is ringed with a plastic grommet.

SIKAFLEX®

Used throughout Newmar construction, Sikaflex elastic adhesive is one of the strongest bonding agents on the market today. It also serves as a sealant against air and water. And it helps dampen both sound and vibration.

16" ON-CENTER FRAMING

Just like a fine site-built residential home, your Newmar home is framed 16 inches on center, which allows the best placement of outlets, switches and other components.



CAFÉ LATTE COLOR SCHEME



CAJUN SPICE COLOR SCHEME



LICORICE COLOR SCHEME

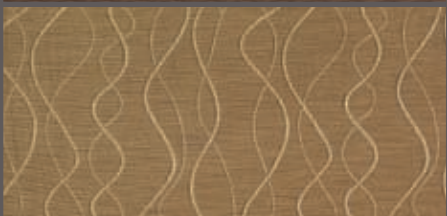
SOFA



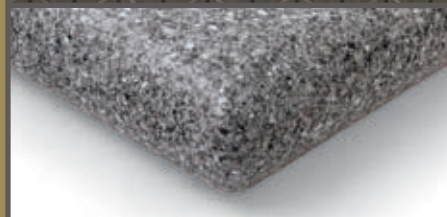
DINETTE



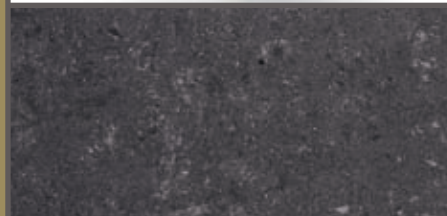
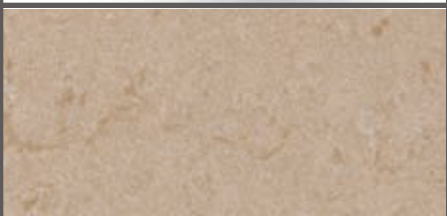
BEDSPREAD



COUNTERTOP



POLISHED PORCELAIN FLOORING



CARPET



BALTIC BEECH CABINERY WITH RAISED-PANEL GLAZED DOORS

Standard



FALL SPICE CABINERY WITH RAISED-PANEL GLAZED DOORS

Optional



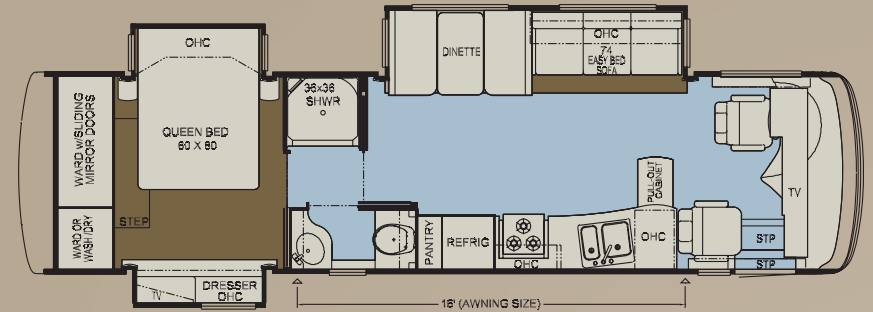
CABINERY HARDWARE



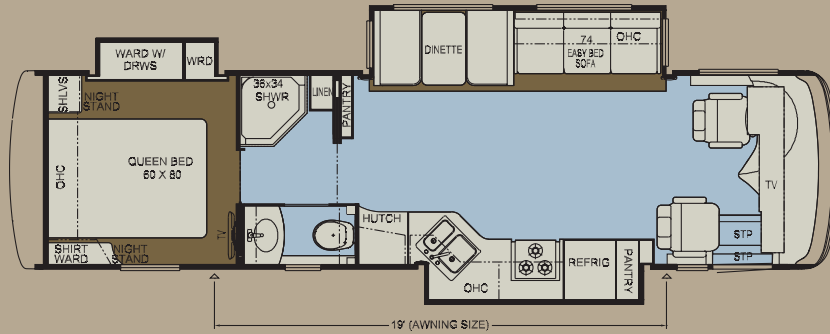
Some features shown in our literature are optional. Colors and finishes are photographic representations. The actual materials may look different. Prices, specifications and floorplans are subject to change at Newmar's discretion, without prior notice or obligation. Please see your dealer for actual samples and specifications.

FLOORPLANS AND OPTIONS

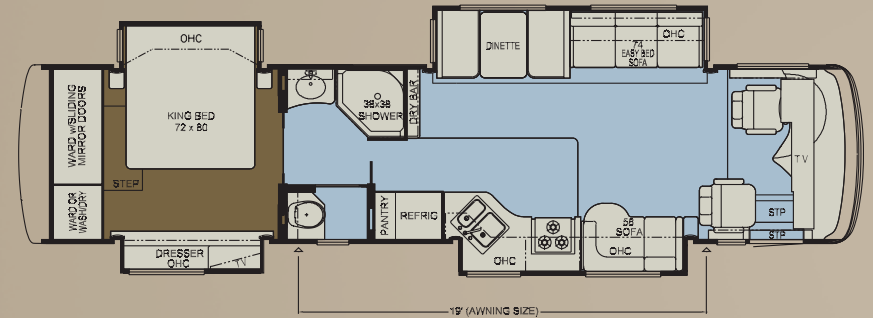
■ Carpet ■ Polished Porcelain Flooring



VTDP 3432: Length: 34' 10" Options: K013,
Width: 101.5" K126, K540,
K547



VTDP 3430: Length: 34' 10" Options: K013,
Width: 101.5" K126, K540,
K547



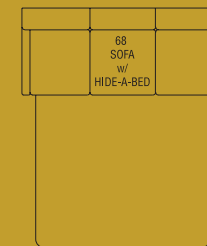
VTDP 3933: Length: 39' 6" Options: J584,
Width: 101.5" K013, K050,
K126, K540,
K547



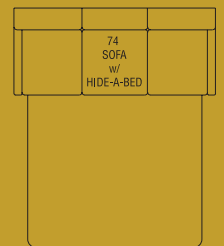
J584
58" Entertainment Center
3933



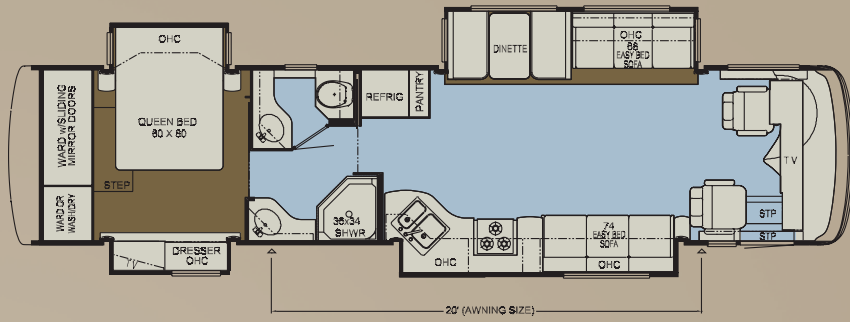
J584_2
Entertainment Center
3942



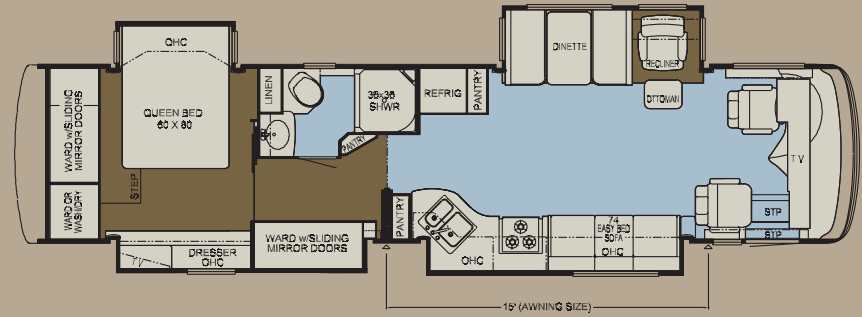
K010
68" Sofa Bed
3936



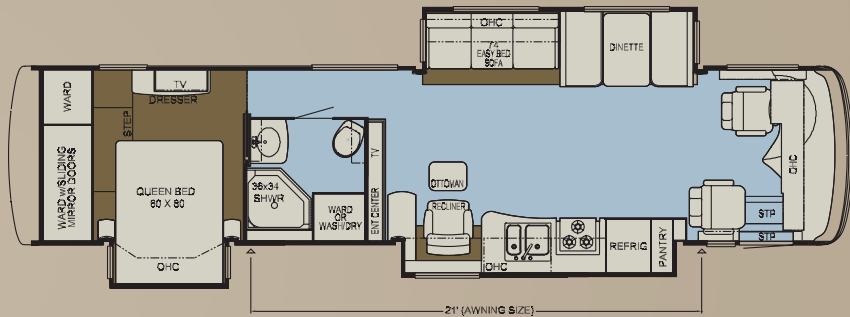
K013
74" Sofa Bed
3430, 3432, 3933, 3942,
3960, 3961



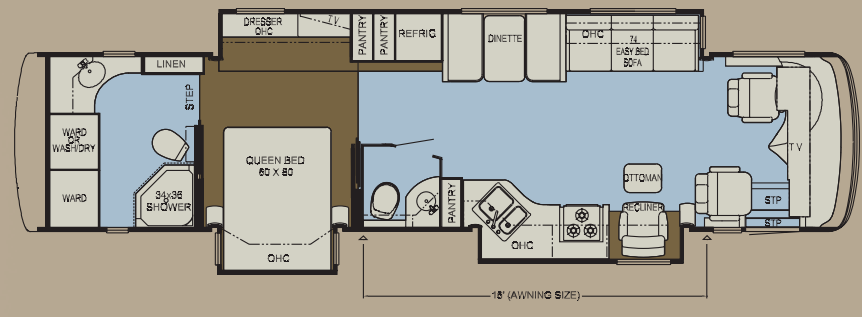
VTDP 3936: Length: 39' 6" Options: K010, K126, K540, K547
Width: 101.5"



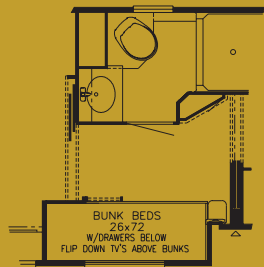
VTDP 3942: Length: 39' 6" Options: J584_2, K013, K047, K126, K540, K547
Width: 101.5"



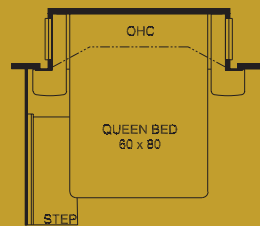
VTDP 3960: Length: 39' 6" Options: K013, K126, K540, K547
Width: 101.5"



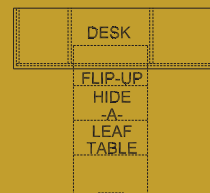
VTDP 3961: Length: 39' 6" Options: K013, K126, K540, K547
Width: 101.5"



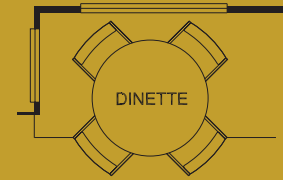
K047
Bunk Beds
3942



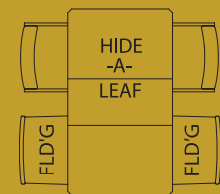
K050
Queen Bed
3933



K126
Combo Desk Dinette
3430, 3432, 3933, 3936,
3942, 3960, 3961



K540
Round Dinette
3430, 3432, 3933, 3936, 3942,
3960, 3961



K547
Freestanding Dinette
3430, 3432, 3933, 3936,
3942, 3960, 3961

STANDARD FEATURES

CHASSIS FEATURES

- Spartan® Mountain Master Chassis
- Cummins® ISB 350 hp
- Coated Aluminum Wheels
- Electric Leveling Jacks with Automatic Control
- Cruise Control
- ComfortDrive™ Steering with Adjustable Control
- Manual Tilt-and-Telescope Steering Column with VIP Smart Wheel
- Recessed Fuel Fills with Crossover to Fill from Either Side
- Back-up Alarm
- Anti-lock Braking System

AIR CONDITIONING & HEATING

- Two 13.5M Penguin™ Heat Pump Central Air Conditioners
- Propane Furnace with In-floor Ducted Heat
- Dash Heater and High-output Air Conditioner
- Propane Leak Detector
- Wall-mounted Sensors for Heating and Air Conditioning

APPLIANCES & ACCESSORIES

- 30" Convection Microwave Oven
- Three-burner Cooktop with Piezo Ignition
- Polished Corian® Range Cover
- Norcold® 10 cu. ft. Refrigerator
- 10 gal. Gas/Electric Water Heater with Direct-spark Ignition
- One-piece Compact Washer/Dryer Prep*
- 26" LCD TV in Living Area*
- 32" LCD TV in Living Area*
- 40" LCD TV in Living Area*
- 22" LCD TV in Bedroom
- 10" Flip-down LCD TV/DVD and Headphones at Each Bunk Bed*
- AM/FM Dash Radio with MP3 Adapter and CD Player
- Surround Sound Home Theater System with Single-disc DVD Player
- Rearview Monitor System
- Electronic Compass and Temperature Display in Dash
- TV Antenna with Power Booster with Two Interior Jacks
- TV Antenna "UP" Warning Signal
- Satellite Prep—Phone, TV Jack and Receptacle
- Cable TV Connection with RG 6 Coax
- Telephone Connection with Phone Jacks in Living and Cockpit Area
- Two Bedroom Radio Speakers with On/Off Switch
- DVD Player in Bedroom
- Roof-mounted Air Horns
- 10 Bc Fire Extinguisher, Carbon Monoxide and Smoke Detectors

CABINETS & FURNITURE

- Baltic Beech Cabinets with Raised-panel Glazed Doors
- Booth Dinette with Hardwood Table Top*
- Polished Corian® Countertop in Kitchen with Undermounted Acrylic Sink and Flush Sink Covers
- Corian® Countertop in Bathroom with Integrated Sink
- Corian Countertop on Nightstands, Dressers and Chest of Drawers
- Adjustable Pullout Pantry Shelves*
- Residential-style Full-extension Ball-bearing Drawer Guides
- Flexsteel® Furniture
- Ultraleather Driver/Passenger Seats with Six-way Power, Power Lumbar, Ergo-Flex Arms
- Ultraleather Recliner with Ottoman or L-lounge*
- Molded Silverware Divider Tray
- Lifts on Bed Top to Access Storage Area
- Carpeted Wardrobe Bottoms with Pearl Cream Headliner on Shelves and Overhead Cabinets
- Tufted Mattress with Quilted Bedspread, Shams and Accent Pillows
- King Bed*
- Wardrobe Along Hallway*
- Pullout Step-stool with Storage in Bathroom

ELECTRICAL FEATURES

- 8.0 kW Cummins Onan® Diesel Quiet Series Generator
- 50 Amp Electrical Service with Flexible Cord
- Four 6 Volt House Batteries on Pullout Tray
- Battery Disconnect Switch
- 110 Volt Exterior Receptacle
- 5 Watt Solar Panel
- 2000 Watt Inverter
- Emergency Start Switch
- Exterior Security Light on Doorside
- Midship Side Turn Signals
- Fluorescent Lights in Ceiling and Overhead Cabinets
- Slideout Information Voice Module
- Manually Operated Hold-to-Run Slideout Switch
- ICC Light Flasher Switch
- 12 Volt Auxiliary Receptacle on Dashboard
- Exterior TV Jack
- Interior Courtesy Lights

EXTERIOR FEATURES

- Full-Paint Masterpiece Finish™ with Front Protective Film
- One-piece Windshield
- Convex Exterior Mirrors with Remote Control, Defrost and Turn Signals
- Entrance Door with Automatic Double Step
- Power Flush Stepwell Cover
- Lighted Exterior Storage Compartments with Cargo Liner, Controlled by Interior Master Switch
- 10,000 lb. Towing Hitch with Two Extra 14 Gauge Wires
- Lighted Acrylic Assist Handle at Entrance Door
- Mud Flaps
- Rear Protective Full-width Tow Guard
- Rear Ladder
- Undercoating

INTERIOR FEATURES

- Padded Vinyl Ceiling
- Day/Night Pleated Window Shades and Lambrequins
- Mini-blinds in Kitchen and Bathroom
- Polished Porcelain Floor in Kitchen, Bathroom and Living Area
- Deluxe Carpeting with High-density Padding in Living Room and Bedroom
- Flat-panel Interior Passage Doors
- Interior Assist Handle at Main Entrance Door
- Manual Duo Day/Night Privacy Shades (Windshield and Driver/Passenger Side Windows)

PLUMBING & BATH FEATURES

- Demand Water System with SHURflo® Pump
- Sewage Holding-tank Rinse
- Water Heater Bypass System
- Thetford™ Aqua Magic Plus China Stool with Wood Seat and Spray Attachment
- One Towel Bar and Tissue Holder
- Fiberglass Tub/Shower with Glass Shower Door
- Monitor Panel
- Water Pump Switches Located in Bathroom, Kitchen and Exterior Near Gate Valves
- Exterior Shower
- Bathroom Water Filter with Drink Dispenser at Kitchen Sink
- Water Filter for Entire Unit

WINDOWS, AWNINGS & VENTS

- Double-pane Tinted Safety-glass Windows
- Fan-Tastic® Vent with Rain Sensor in Kitchen and Bathroom Areas
- Skylight in Bathroom*
- A&E® 9000 Side Awning
- A&E Oasis Manual Front Entrance Door Awning
- A&E Slideout Awning Covers
- Cockpit Overhead Ventilation System

* CHECK DEALERSHIP FOR FLOORPLAN AVAILABILITY.

OPTIONAL FEATURES

AIR CONDITIONING & HEATING

- Hydronic Zone Propane Heating System

APPLIANCES & ACCESSORIES

- Norcold® 12 cu. ft. Four-Door Refrigerator with Icemaker
- Norcold® 12 cu. ft. Four-Door Refrigerator
- Icemaker Added to Refrigerator*
- One-Piece Washer/Dryer*
- Two-Piece Washer/Dryer in Rear Wardrobe*
- Sirius Satellite Radio Capability (Does not include monthly subscription)
- 32" LCD TV at Dry Bar*
- External Entertainment Center with 26" LCD TV and AM/FM Radio and CD Player
- Automatic Satellite without Receiver
- In-Motion Satellite without Receiver
- High Definition Wiring with Selector Switch
- Entertainment Center with Relocated Std. Living Area TV and Surround Sound System
- Sideview Cameras
- CB Radio with Antenna
- CB Antenna
- Pre-programmed Universal Remote Control
- Dash Radio/CD Player with Portable TomTom® Navigation System and MP3 Adapter

CABINETS & FURNITURE

- Fall Spice Cabinets with Raised-panel Glazed Doors
- Ultraleather Hide-a-Bed*
- Ultraleather Hide-a-Bed with Air Mattress*
- Ultraleather Sofa*
- Hidden Leaf Dinette with Four Chairs and Larger Dinette Windows
- Round Hardwood Dinette Table with Four Fixed Chairs and Larger Dinette Window
- Comfortaire® Air Mattress (Main Bed)
- Bunk Beds in Place of Wardrobe*
- Power Footrest on Passenger Seat
- Combination Desk/Dinette Table with Two Fixed Chairs and Two Folding Chairs*

ELECTRICAL FEATURES

- Energy Management System

EXTERIOR FEATURES

- Large Chrome Exterior Mirrors
- Large Storage Tray with Access from One Side or Either Side*

INTERIOR FEATURES

- Power-activated Sun Visors
- Halogen Lighting

PLUMBING & BATH FEATURES

- 110 Volt Heat Pads for Holding Tanks

WINDOWS, AWNINGS & VENTS

- A&E® 9000 Bedroom and Slideout Window Awning
- A&E Weather Pro Side Awning and Oasis Power Front Entrance Door Awning

FLOORPLAN SPECIFICATIONS

FLOORPLAN	APP. OVERALL LENGTH ¹	WIDTH	APP. OVERALL HEIGHT	INTERIOR WIDTH	INTERIOR HEIGHT	GREY	SEWAGE	WATER	PROPANE	FURNACE	WATER HEATER
VTDP 3430	34' 10"	101.5"	12' 5"	95.5"	84"	65 gal.	45 gal.	105 gal.	32 gal.	35,000 Btu	10 gal.
VTDP 3432	34' 10"	101.5"	12' 5"	95.5"	84"	65 gal.	45 gal.	105 gal.	32 gal.	35,000 Btu	10 gal.
VTDP 3933	39' 6"	101.5"	12' 5"	95.5"	84"	65 gal.	45 gal.	105 gal.	32 gal.	42,000 Btu	10 gal.
VTDP 3936	39' 6"	101.5"	12' 5"	95.5"	84"	65 gal.	45 gal.	105 gal.	32 gal.	42,000 Btu	10 gal.
VTDP 3942	39' 6"	101.5"	12' 5"	95.5"	84"	65 gal.	45 gal.	105 gal.	32 gal.	42,000 Btu	10 gal.
VTDP 3960	39' 6"	101.5"	12' 5"	95.5"	84"	65 gal.	45 gal.	105 gal.	32 gal.	42,000 Btu	10 gal.
VTDP 3961	39' 6"	101.5"	12' 5"	95.5"	84"	65 gal.	45 gal.	105 gal.	32 gal.	42,000 Btu	10 gal.

SPARTAN® CHASSIS INFORMATION

FLOORPLAN	ENGINE HP	AXLE RATIO	FUEL CAP.	WHEELBASE	FRONT GAWR ²	REAR GAWR ²	GVWR ²	GCWR ²	APP. UVW	APP. NCC
VTDP 3430	350	4.88	100 gal.	202"	10,500 lb.	17,500 lb.	28,000 lb.	38,000 lb.	23,600 lb.	4,400 lb.
VTDP 3432	350	4.88	100 gal.	202"	10,500 lb.	17,500 lb.	28,000 lb.	38,000 lb.	23,700 lb.	4,300 lb.
VTDP 3933	350	4.88	100 gal.	252"	12,000 lb.	20,000 lb.	32,000 lb.	42,000 lb.	26,700 lb.	5,300 lb.
VTDP 3936	350	4.88	100 gal.	252"	12,000 lb.	20,000 lb.	32,000 lb.	42,000 lb.	26,700 lb.	5,300 lb.
VTDP 3942	350	4.88	100 gal.	252"	12,000 lb.	20,000 lb.	32,000 lb.	42,000 lb.	26,900 lb.	5,100 lb.
VTDP 3960	350	4.88	100 gal.	252"	12,000 lb.	20,000 lb.	32,000 lb.	42,000 lb.	26,300 lb.	5,700 lb.
VTDP 3961	350	4.88	100 gal.	252"	12,000 lb.	20,000 lb.	32,000 lb.	42,000 lb.	27,400 lb.	4,600 lb.

THE LIMITED FIVE-YEAR STRUCTURAL WARRANTY

If any part of your Newmar recreational vehicle superstructure (which is the steel/aluminum structure of the sidewall, roof or frame) fails to perform properly within five years from the date of purchase, due to faulty workmanship or material supplied by Newmar, it will be repaired without charge for either parts or labor by Newmar. This structural warranty is available only to the original purchaser and is non-transferable.

NEWMAR EXPRESS LIMITED WARRANTY

Every Ventana Diesel is backed by Newmar's one-year limited warranty/unlimited miles. Ask your Newmar dealer for details.



FULL-PAINT MASTERPIECE FINISH™

Newmar's Full-Paint Masterpiece Finish raises the exterior beauty and durability of our motorhomes to a whole new level. To obtain such rich-looking graphics, we use up to 16 gallons of paint on each unit, applying three coats each of primer, a base coat and color for graphics, and end with a final clear coat.

SPARTAN MOUNTAIN MASTER CHASSIS

The Spartan Mountain Master and Mountain Master GT don't just lead the way, they pave it! Spartan's Mountain Master chassis is America's most popular, most reliable, highest-performing diesel pusher. Experience the power, the superior ride and handling and excellent driving performance your coach built on a Spartan Mountain Master chassis has to offer. The Mountain Master chassis provides excellent resale value and carries a 36-month, 50,000-mile, no-deductible warranty, which includes roadside assistance for the entire warranty period. Sit back and enjoy the ride!

Lengths, heights, widths and dry weights are approximate. Weight will vary based on optional equipment added to the above base weight.

¹ Lengths do not include the rear ladder.

² Specifications are supplied by the chassis manufacturer.

GAWR: Gross Axle Weight Rating is the maximum permissible weight for an axle.

GCWR: Gross Combination Weight Rating is the value specified by the manufacturer of the vehicle as the maximum allowable loaded weight of this motorhome and any towed trailer or towed vehicle.

GVWR: Gross Vehicle Weight Rating is the maximum permissible weight of a fully loaded motorhome.

UVW: Unloaded Vehicle Weight is the weight of this motorhome as built at the factory with full fuel, engine oil and coolants. The UVW does not include cargo, fresh water, LP gas or dealer-installed accessories.

NCC: Net Carrying Capacity is the maximum weight of all occupants, including the driver, personal belongings, food, fresh water, waste water, LP gas, tools, tongue weight of towed vehicle, dealer-installed accessories, etc., that can be carried by the motorhome.

TAKE THE NEWMAR FACTORY TOUR



We'd love to have you visit our state-of-the-art production facility in Nappanee, Indiana. Factory tours are given Monday through Friday at 10 a.m. and 1 p.m. Eastern Standard Time. Please arrive 15 minutes before the hour, and check in at the tour area located in Building Nine on Cheyenne Street. No open-toed sandals can be worn, and children under the age of eight are not allowed to take the tour.

For more information, please call 1-800-860-0086.

VENTANA

NEWMARSM

WHEN YOU KNOW THE DIFFERENCESM



NEWMAR CORPORATION • 355 N DELAWARE ST • PO BOX 30 • NAPPANEE IN 46550-0030
574.773.7791 • fax 574.773.2895 • www.newmarcorp.com

Some features shown in our literature are optional. Colors and finishes are photographic representations. The actual materials may look different. Prices, specifications and floorplans are subject to change at Newmar's discretion, without prior notice or obligation. Please see your dealer for actual samples and specifications. © 2008 Newmar Corporation. Printed in the U.S.A. (04/08)

