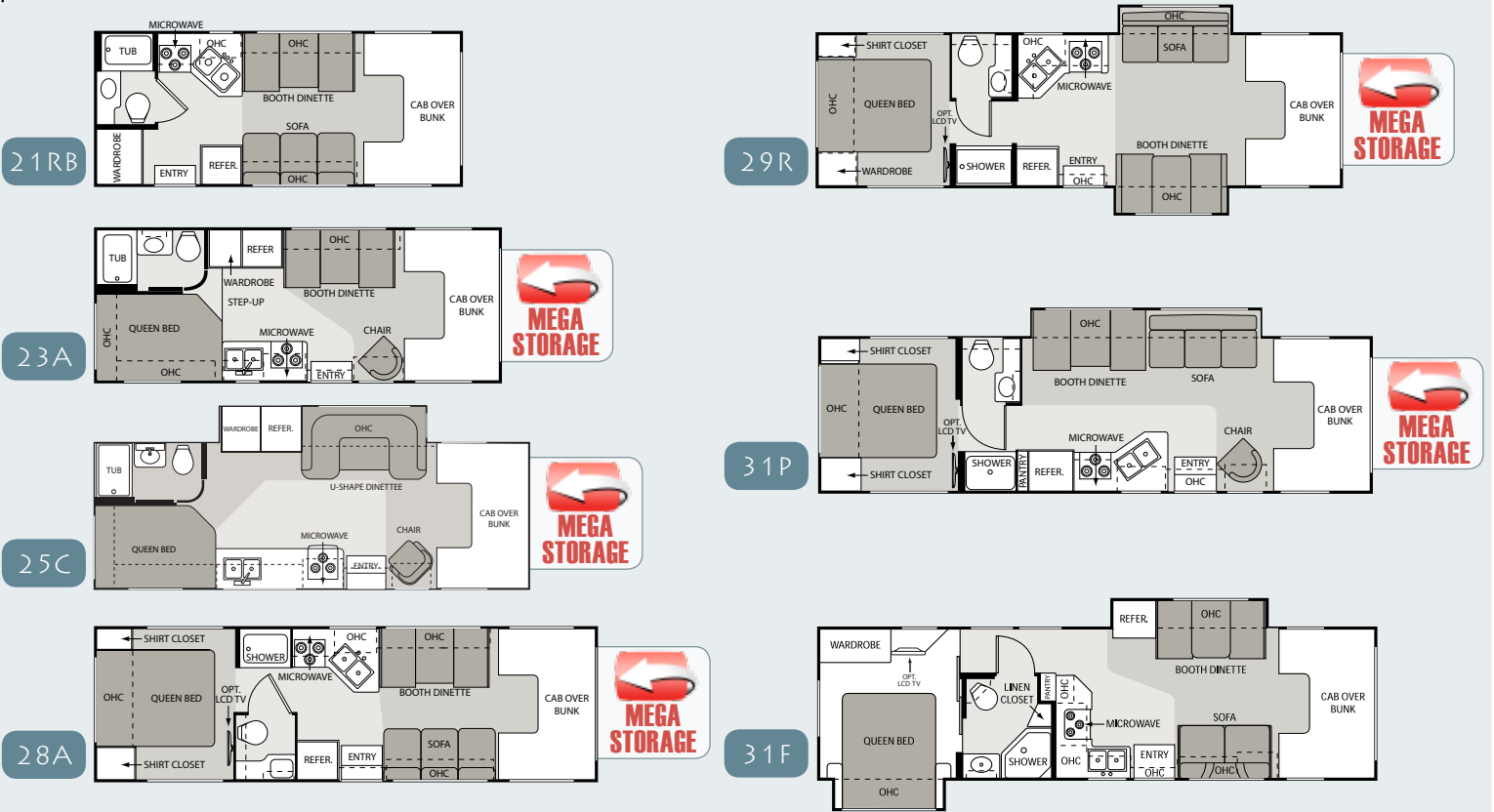


## KEY FEATURES

- Full 82" interior ceiling height
- Ceiling ducted air conditioning system
- Models 21RB, 23A and 25C feature a tub/shower with curved curtain rod
- Home theater system with DVD player and radio tuner
- HD/DSS satellite prep
- Convenient slide-out battery tray
- Crown roof and ducted air now standard on all models
- Convenience package includes keyless entry and valve stem extenders
- Optional automatic electric awning

## FLOORPLANS



## SPECIFICATIONS

Model	21RB	23A	25C	28A	29R	31P	31F
<b>Ford Chassis with Triton engine</b>	5.4L/V-8	6.8L/V-10	6.8L/V-10	6.8L/V-10	6.8L/V-10	6.8L/V-10	6.8L/V-10
Gross Vehicle (GVWR)	11,500	12,500	14,500	12,500	14,500	14,500	14,500
Gross Combined (GCWR)	13,000	18,500	20,000	18,500	20,000	20,000	20,000
<b>Ford Chassis-6.0L power stroke diesel (opt)</b>	N/A	V-8	V-8	V-8	V-8	N/A	N/A
Gross Vehicle (GVWR)	N/A	14,500	14,500	14,500	14,500	N/A	N/A
Gross Combined (GCWR)	N/A	20,000	20,000	20,000	20,000	N/A	N/A
<b>Chevy Chassis with 6.0L Vortec engine</b>	V-8	V-8	V-8	V-8	V-8	V-8	N/A
Gross Vehicle (GVWR)	12,300	12,300	14,050	12,300	14,050	14,050	N/A
Gross Combined (GCWR)	16,000	16,000	17,600	16,000	17,600	17,600	N/A
<b>MEASUREMENTS</b>							
Wheel Base (Ford/Chevy)	138"/139"	158"/159"	189"/190"	190"/191"	205"/206"	219"/220"	223"/-
Exterior Length (without ladder)	22'8"	24'10"	27'4"	29'9"	32'2"	32'3"	32'2"
Exterior Height (with air conditioning)	10'10"	10'10"	10'10"	10'10"	10'10"	10'10"	11'4.5"
Exterior Width (without mirrors)	99"	99"	99"	99"	99"	99"	99"
Interior Height	82"	82"	82"	82"	82"	82"	82"
Awning Size (manual/electric)	12'/12'	15'6"/-	18'/18'	14'14'	15'/15'	16'/16'	16'/16'
<b>CAPACITIES</b>							
Fuel - Ford/Chevy (gallons)	37/35	55/57	55/57	55/57	55/57	55/57	55/-
LPG (pounds)	40.9	40.9	40.9	40.9	40.9	40.9	40.9
Fresh Water (gallons)	21	40	40	40	40	40	33
Waste Water (gallons)	25	24.5	24.5	25	22	31	32
Gray Water (gallons)	22	38.5	38.5	22	23	29	36
Water Heater (gallons)	6	6	6	6	6	6	6
Furnace (BTUs)	25,000	25,000	30,000	30,000	30,000	30,000	30,000
Exterior Storage Capacity (cubic feet)	6	69	69	111	101	101	26

# 2009 FOUR WINDS STANDARD & OPTIONAL FEATURES

## BODY CONSTRUCTION/EXTERIOR

Fully welded tubular steel floor system	S
Fully welded tubular aluminum roof and sidewall cage construction	S
Vacu-Bond laminated roof, walls and floors with high-density block foam insulation	S
Filon fiberglass exterior sidewalls	S
Slick fiberglass exterior	O
Exterior graphics package	S
Exterior graphics/partial paint package	O
Exterior rear Mega Storage compartment (not available on 21RB and 31F)	S
Seamless roto-cast storage compartments	S
Flush mount radius luggage doors	S
Premium one-piece TPO roof (Energy Star approved)	S
Crown roof	S
Manual patio awning	S
Automatic electric patio awning	O
Slide-out room awning (not available on 21RB, 23A and 28A)	S
Roof ladder	S
Rubber tread entry steps	S
Drop-down stairwell entrance step (not available on 21RB and 31F)	S
Manual entrance step (21RB and 31F only)	S
Automatic electric entrance step (21RB and 31F only)	O
Outside shower	O

## AUTOMOTIVE/COCKPIT

14,500 GVWR Ford 6.0L Power Stroke diesel engine with Torqshift transmission & Onan 3.6 LP generator (not available on 21RB)	O
5,000-lb. trailer hitch	S
AM/FM dash radio with large buttons, CD player and weather band tuner; iPod and Sirius® satellite ready	S
3-point seat belts for driver and passenger	S
Power window and door locks	S
Upgrade dash insert with drink tray	O
Deluxe exterior mirrors	S
Deluxe heated remote mirrors	O
Aluminum running boards (not available on 31F)	S
Fiberglass running boards (31F only)	S

Spare tire	S
Wheel liners	O
Infiniss™ Leather driver and passenger captain's chairs	O
Power driver seat (Ford chassis only)	O
Back-up monitor	O

## INTERIOR

82" ceiling height	S
Residential linoleum (galley, bath and entry way)	S
Metal entry grab handle	S
Windshield privacy curtain	S
13,500 BTU roof air conditioner in front	S
15,000 BTU roof air conditioner in front	O
Ceiling ducted air conditioning system	S
Golden Maple cabinetry	S
Cinnamon Maple or Cherry cabinetry	O
Raised panel upper cabinet doors	S
Hardware with Brushed Nickel finish	S
Hidden hinges on cabinet doors (31F only)	S
Mini blinds throughout	S
Day/night shades throughout	O
Soft-Touch vinyl ceiling (31F only)	S
Hard vinyl ceiling (not available on 31F)	S
Incandescent ceiling lighting	S
Barrel chair (23A, 25C and 31P only)	S
Leatherette Euro Chair with ottoman	O
Fabric jackknife sofa (not available on 23A and 25C)	S
Infiniss™ Leather jackknife sofa (not available on 23A and 25C)	O
Fabric hide-a-bed sofa (29R only)	O
Infiniss™ Leather hide-a-bed sofa (29R only)	O
Infiniss Leather hide-a-bed sofa with air mattress (31P Ford chassis only and 29R)	O
Fabric jackknife sofa with pedestal table in place of dinette (29R only)	O
Infiniss Leather jackknife sofa with pedestal table in place of dinette (29R only)	O
Booth dinette (not available on 25C)	S
Fabric U-shaped dinette (25C only)	S
Infiniss™ Leather U-shaped dinette (25C only)	O
Fantastic® fan	O

Fantastic® fan in overhead bunk	O
<b>GALLEY</b>	
Double door refrigerator	S
Decorative raised wood refrigerator panels	O
3-burner high-output gas range top	S
Microwave oven	S
3-burner high-output gas range top with oven	O
Convection microwave with 3-burner high-output gas range top	O
Laminate countertops	S
Large double bowl sink	S
Flip-up countertop extension (23A, 31P and 31F only)	S
Full extension metal drawer guides	S

## ENTERTAINMENT & ACCESSORIES

26" television in front overhead with electric swivel in cab-over	O
Entertainment center with 26" LCD television and slide-out bunk (not available on 31F)	O
Entertainment center with 32" LCD television and slide-out bunk (31F only)	O
Portable 19" LCD television in bedroom—can be removed and mounted to exterior hook-ups (not available on 21RB, 23A and 25C) (Fixed TV on 31F)	O
Outside entertainment center with AM/FM stereo and CD player (not available on 21RB)	O
Outside entertainment center includes a 26" LCD television, AM/FM stereo, CD/DVD player, iPod ready jack and speakers (31P only)	O
Home theater system with DVD player and radio tuner	O
Television antenna and booster	S
Cable television prep	S
HD/DSS satellite prep	S
High-definition satellite dish	O

## BEDROOM/BATHROOM

Queen-size bed with innerspring mattress (not available on 21RB)	S
Twin beds with night stand (not built with Mega Storage; 28A only)	O
Bedsprad and pillow shams (not available on 21RB)	S
Power bath vent	S
China bowl toilet	S

Skylight in shower	S
Tub/shower with curtain and curved curtain rod (21RB, 23A and 25C only)	S
Shower with pleated shower curtain (28A, 29R and 31P only)	S
Shower with glass door (not available on 31F)	O
Neo-angled shower with glass door and surround (31F only)	S

## SAFETY & CONVENIENCE

Entry door with deadbolt lock	S
Telephone jack	S
Smoke, LPG and carbon monoxide detectors	S
Fire extinguisher	S
Passenger seat belts in select areas	S
Systems Control Center	S
Child safety seat tether anchor in booth dinette (not available in 25C)	O
Slide-out battery tray	S
Convenience Package includes keyless entry and valve stem extenders	O

## ELECTRICAL & PLUMBING

Guardian RV Quietpac® 40G gas generator (3600-KW)	O
Onan® Microquiet™ 4.0 gas generator (4000-KW)	O
Onan® 3.6 LP generator (3600-KW; standard with Ford power stroke diesel engine on 23A, 25C, 28A and 29R only)	O
30-amp service with shoreline power cord	S
Automatic shoreline-to-generator transfer switch	O
Battery disconnect switch	S
Emergency start switch	S
Second auxiliary house battery	O
6-gallon DSI gas water heater	S
6-gallon DSI gas/electric water heater	O
Water heater bypass system	S
Heated and enclosed holding tanks (31F only)	S
Holding tanks with heat pads (not available on 31F)	O



**VEHICLE LOADING:** Every effort has been made to provide the greatest number of options for the recreation vehicle owner. Along with these choices comes the responsibility to manage the loads that are imposed by the choices so that they remain within the manufacturer's specified chassis weight limits. Do not overload the recreation vehicle.

**IMPORTANT:** Towing capacity may vary by chassis model, floorplan, options and loading of the vehicle. This may result in a towing capacity which is less than the maximum capacity of the hitch. Do not exceed the vehicle's Gross

Combined Weight Rating (GCWR), or the hitch rating. A separate functioning brake system is required for any towed vehicle or trailer weighing more than 1,000 lbs. (450 KG) when fully loaded. Liquid capacities and weights are approximations only.

**WARNING:** This information is intended as a guide only. Weights of individual vehicles may vary. Consult your owner's manual and weight sticker affixed to each vehicle for complete loading, weighing, and towing instructions. Actual filled LP capacity is 80% of listing due to safety shut-off required on tank.

**WARRANTY:** The vehicles are provided with a one-year, 15,000-mile limited warranty and a three-year, 45,000-mile limited structural warranty. Chassis, component part and appliance manufacturers issue limited warranties covering those portions of the vehicle not covered by the limited warranties issued by Four Winds International. To learn what portions of the vehicle are excluded from coverage under the limited warranties issued by Four Winds International, please contact your selling dealership or Four Winds International directly, or review the warranty packet inside the vehicle.

Product information, specifications, and photography in this brochure were as accurate as possible at time of printing. Photographs may contain some features that are optional on your vehicle. Since we continually strive to improve our products, actual products may differ. The manufacturer reserves the right, at any time, to make changes in product design, materials, component specifications and pricing, without notice. All capacities are approximate and dimensions are nominal. Some features or options may be different or unavailable in Canada.