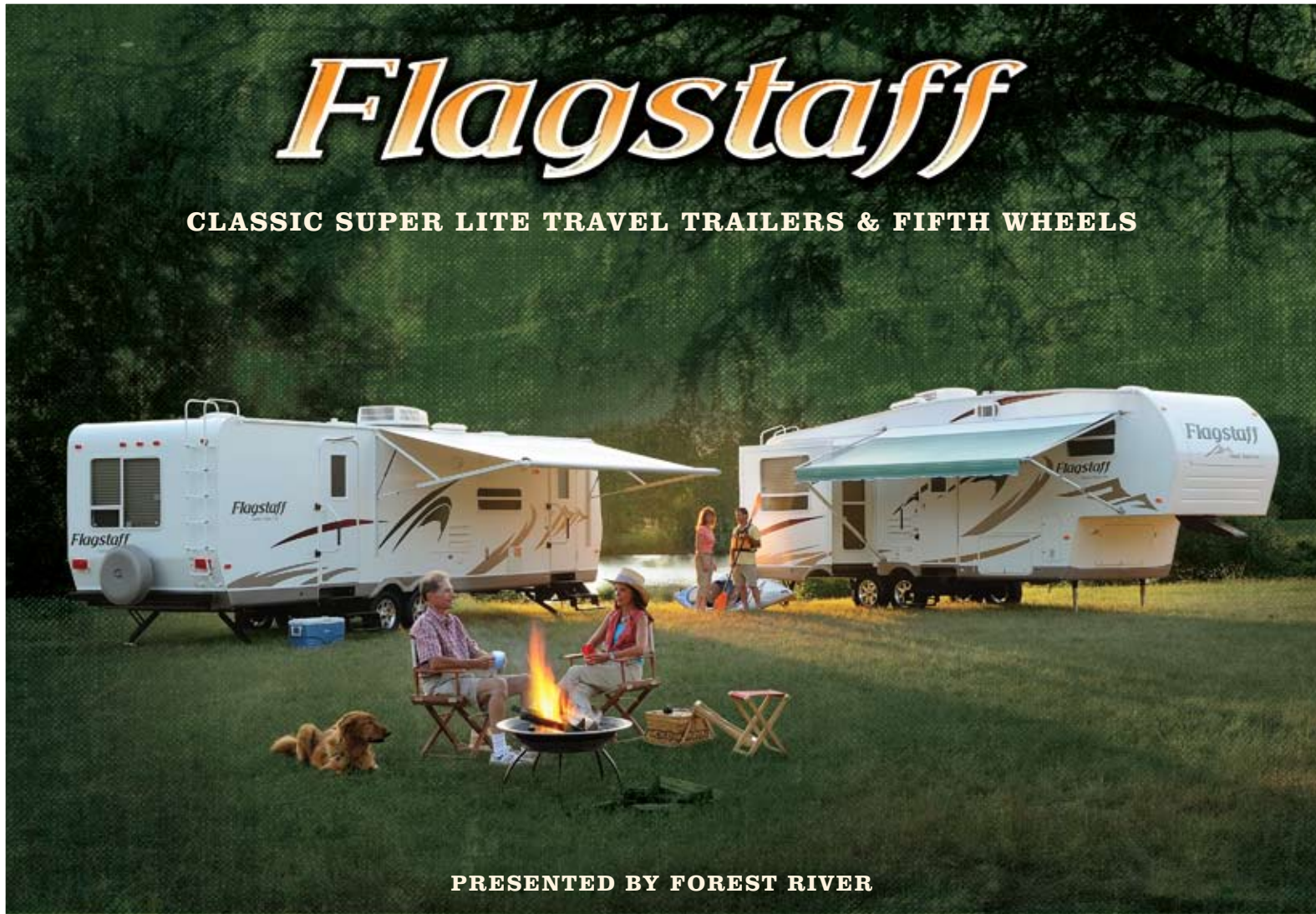


**CLASSIC SUPER LITE**

# Flagstaff

**CLASSIC SUPER LITE TRAVEL TRAILERS & FIFTH WHEELS**



**PRESENTED BY FOREST RIVER**

**CLASSIC SUPER LITE**

**MODEL 831FKBSS**

## **CLASSIC SUPER LITE**



Take in the view. Equipped with optional atrium slide window package, you'll enjoy the incredible view throughout the living space. The 831FKBSS floorplan is designed to bring everyone close with the open front kitchen and living area joined. Spend time together with plenty of room to stretch out.



## FEATURES

A. Directional Reading Lights (Standard Above All Sofas and in The Bedrooms.)

B. Pass through Storage (Most Models)

C. Air-Bed Sofa (Opt.)

D. Hardwood Doors and Drawers

E. 831FKBSS Bedroom slide



A



B



C



D



E

**CLASSIC SUPER LITE**

**MODEL 8528RL**

## CLASSIC SUPER LITE



Our trailers are packed full of quality features in order to bring to you one of the best values in the light weight market. When you explore our floorplans, you will notice expansive flush-floor slides, solid wood doors and drawer fronts and an optional airbed sofa that opens up to a full 5" thick queen mattress. We use only the best inside our "Signature Classic Series."

# STANDARDS & OPTIONS

## STANDARD FEATURES

- Radius Roofs (TT Only)
- Fully Laminated Aluminum Frame (Floor, Sidewall, & Roof)
- Insulation Factors R-7 Side Wall, R-12 Floor and R-14 Roof
- Easy Lube Axles
- Foot Flush Toilets
- Aluminum Bed, Bunk and Dinette Frames
- Laminated Filon Fiberglass Sidewalls
- Screwed and Glued Cabinetry
- Vinyl Roof
- Torsion Axle, Rubber-Ryde Suspension
- Electric Slide-Out
- Ducted Furnace
- Raised Panel Doors and Drawers
- Digital AM/FM/CD w/ Remote
- iPod Hook-Up
- Residential One-Piece Sink Cover/Cutting Board
- Flush Mount Stone Cast Sink
- Trash Can in Kitchen (Most Models)
- Interior Floor Light by Entrance Door
- Monitor Panel
- Designer Valances w/ Lambrequin Arms
- Mini Blinds

- Tub Surround
- Three Burner High Output Gas Range
- Six Gallon "Quick Recovery" Water Heater
- Water Heater By-Pass Kit
- Outside Shower
- Phone Jack
- Molded Bottle Cover
- Bathroom Skylight
- 55 Amp Converter With Charger
- Auto Gas/Electric Refrigerator
- Rear Stabilizer Jacks
- Residential Metal Drawer Guides
- Directional Reading Lights on Sofa Slides
- TV Antenna w/ Cable & Satellite Hook-Up
- Front Stabilizer Jacks
- Enclosed Sectionalized Underbelly
- Electronically Heated Holding Tanks
- Black Water Flush
- Gas Oven
- Two-30 lb. Gas Bottles
- Folding Grab Handle
- Day/Night Shades
- Solid Wood Door and Drawer Fronts
- Gas/Electric Hot Water Heater With DSI
- Power Front Jacks (Fifth Wheels)

- Rear Stabilizer Jacks (Fifth Wheels)
- Swivel Chair (Where Available)
- 30" Entrance Door (Most Models)
- Lighted Entry Step
- 22" LCD TV w/ 5.1 Digital Dolby Surround Sound (Except 8528DS)
- 110 DSI Gas/Electric Water Heater

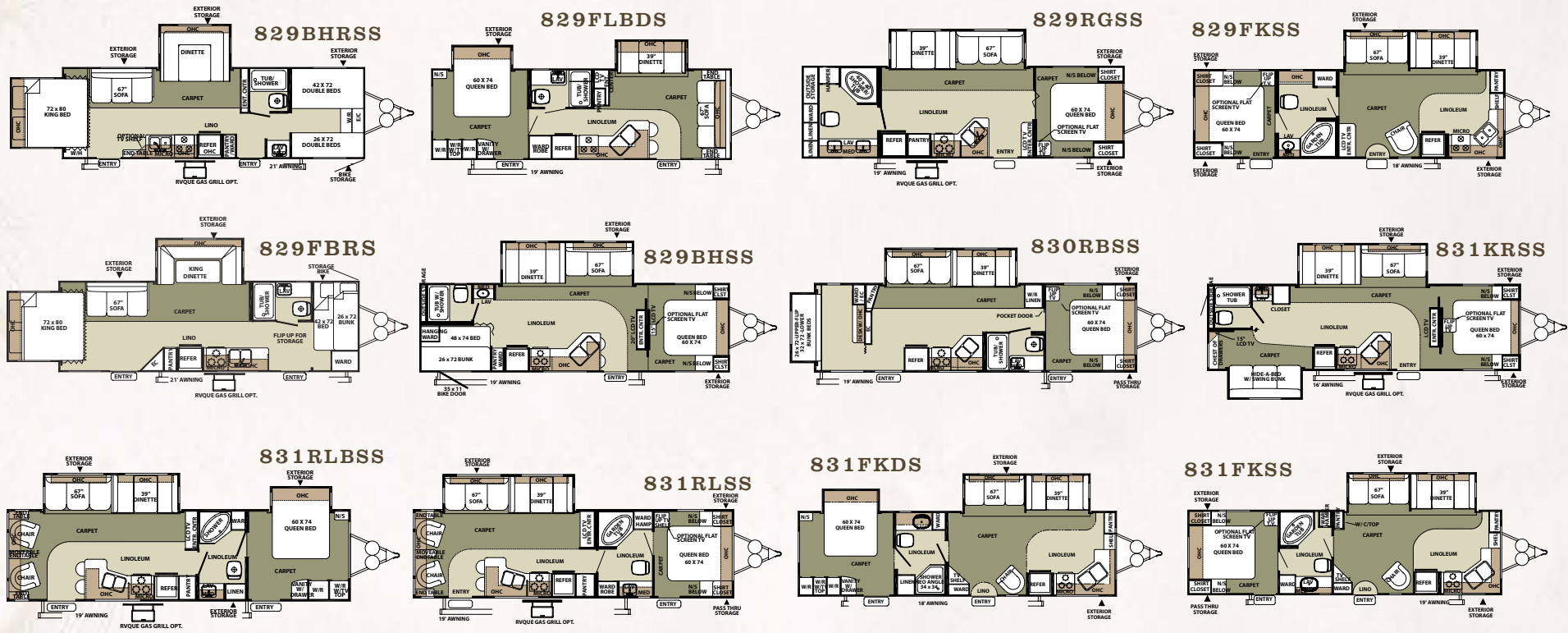
## OPTIONAL FEATURES

- Create-A-Breeze Three Speed Fantastic Vent (Standard Option)
- Heated Mattress (Standard Option)
- Water-Pur Filtration System (Standard Option)
- 13,500 or 15,000 BTU Ducted Roof Air
- Microwave
- Gas Oven
- Carbon Monoxide Detector (Standard Option)
- Awning
- Power Awning With Adjustable Rain Dump
- Outside Gas Grill and Worktable
- Raised Oak Refrigerator Panels
- Cream Raised Refer Fronts
- Spare Tire Carrier & Cover
- Aluminum Wheels
- Slide Out Toppers

- Cream Interior Option With Stainless Steel Appliances
- Stainless Steel Appliances With Oak Interior
- CSA
- 2 Swivel Chairs ILO Sofa (829FLBDS)
- Outside Speakers
- Rear Ladder
- Tinted Safety Glass
- Extra Create-a-Breeze fan
- Power Front Jack
- Tire Pressure Monitoring System
- Minimum Carpet
- Storm Windows
- Hide-A-Bed Air Mattress With Storage
- Free Standing Table and Chairs
- Ceiling Fans (Fifth Wheels)
- Atrium Slide Windows (On Most Super Slides)
- Counter Top Extension (N/A 829FKSS, 831FKSS)
- 15" LCD Bedroom TV
- Power Awning (Standard Option)
- Lazy Boy Leather Recliner Option: Available ILO All Units With Barrel Chairs (N/A 831FLSS)
- Power Rear Stabilizer Jacks (Fifth Wheels Only)



# CLASSIC SUPER LITE: TRAVEL TRAILERS



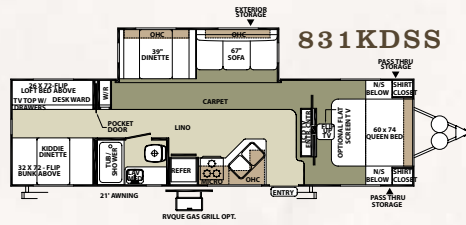
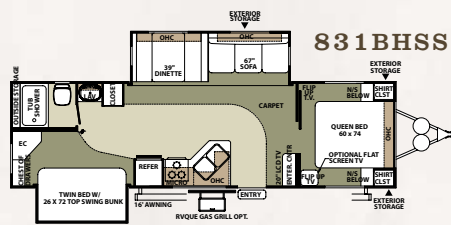
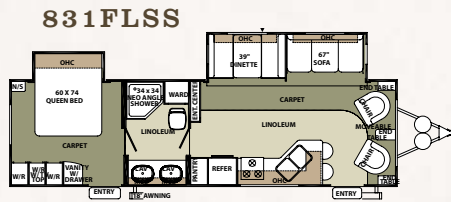
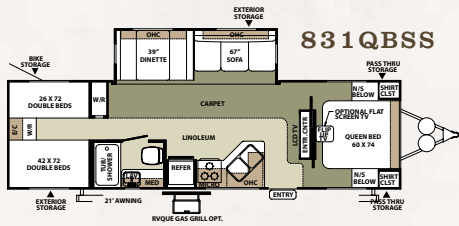
## TRAVEL TRAILERS

## FIFTH WHEELS

MODEL	829FLBDS	829RGSS	829FKSS	829BHSS	829FBRSS	829BHSS	830RBSS	831KRSS	831RLSS	831RLBS	831FKSS	831FKBSS	831QBSS	831KDSS	831BHSS	831FLSS	8524CBS	8524RLS	8526RKWS	8526RLS
GVWR	7337	7496	7566	7628	7828	7676	8107	8093	7951	8148	8058	8132	8162	7931	8138	8079	7626	7773	8750	8360
Base/Dry Unit Weight	5387	5546	5616	5677	5694	5724	6071	6541	6147	6341	6107	6432	6212	5981	6249	6129	5676	5823	6800	6410
Base/Dry Hitch Weight	601	630	933	694	548	770	827	813	671	868	864	852	1111	945	858	918	1222	1056	975	1100
Base/Dry Axle Weight	4786	4916	4683	4983	5146	4954	5244	5728	5476	5473	5243	5580	5101	5036	5391	5211	4454	4767	5825	5310
Cargo Capacity	1900	1900	1900	1900	1900	1900	1900	1502	1753	1756	1900	1650	1900	1900	1839	1900	1900	1900	1900	1900
Length	31' 10"	31' 6"	31' 6"	31' 6"	30' 2"	33'	33'	33' 11"	33' 11"	33' 11"	33' 11"	33' 11"	33' 11"	33' 11"	33' 11"	33'	26' 1"	26' 1"	27' 6"	27' 4"
Width	96"	96"	96"	96"	96"	96"	96"	96"	96"	96"	96"	96"	96"	96"	96"	96"	96"	96"	96"	96"
Height w/o A/C	112"	117"	112"	117"	117"	117"	117"	117"	117"	117"	117"	117"	117"	117"	117"	117"	135"	135"	135"	135"
Interior Height	78"	78"	78"	78"	78"	78"	78"	78"	78"	78"	78"	78"	78"	78"	78"	78"	NA	NA	NA	NA

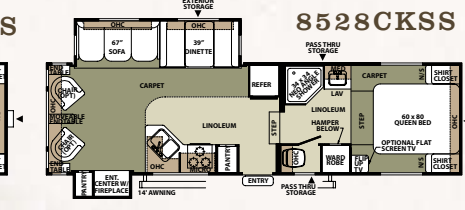
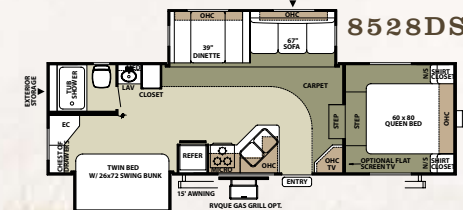
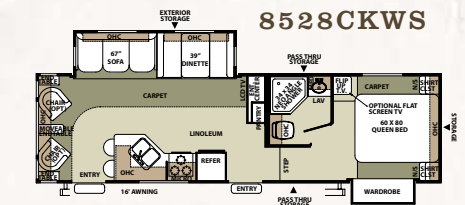
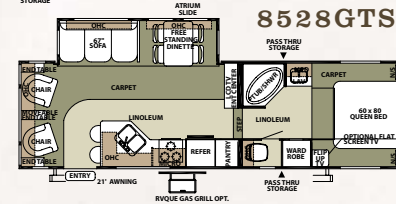
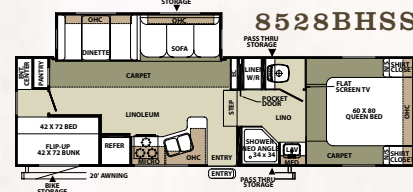
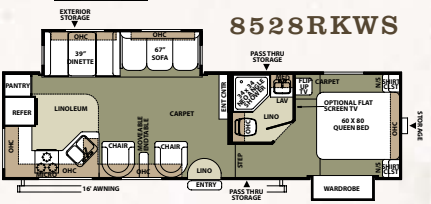
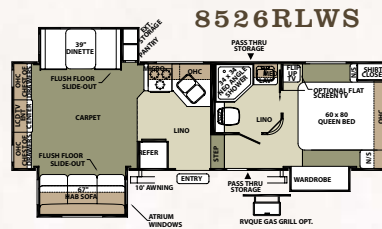
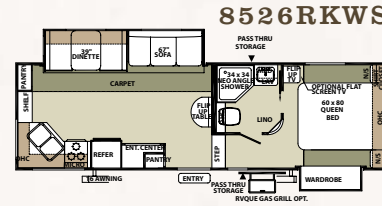
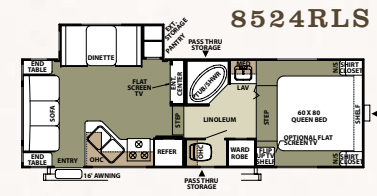
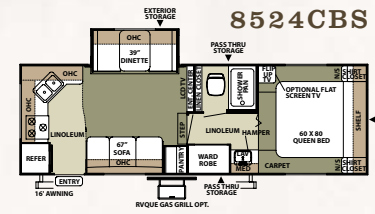
# TRAVEL TRAILERS

# FIFTH WHEELS



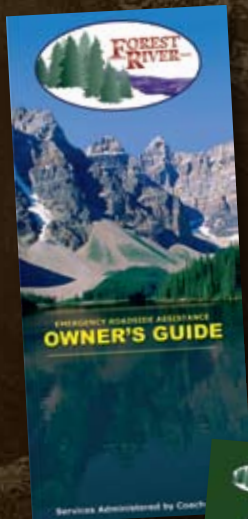
## FIFTH WHEELS

MODEL	8526RLWS	8528RKSS	8528BHSS	8528GTSS	8528CKSS	8528DS	8528RKWS	8528RLWS
GVWR	9169	8257	8785	8520	9004	9024	8750	9108
Base/Dry Unit Weight	7931	6307	6835	6569	7054	7074	6800	7033
Base/Dry Hitch Weight	1169	1061	1197	1054	1415	1464	975	1108
Base/Dry Axle Weight	6762	5246	5638	5515	5639	5610	5825	5925
Cargo Capacity	1188	1900	1900	1900	1900	1900	1900	1900
Length	27' 10"	30' 6"	30'	30' 6"	30' 11"	30'	30' 6"	30' 11"
Width	96"	96"	96"	96"	96"	96"	96"	96"
Height w/o A/C	135"	147"	147"	147"	147"	135"	147"	147"
Interior Height	NA	NA	NA	NA	NA	NA	NA	NA



## PEACE OF MIND.

Forest River has yet another exclusive feature to offer: One year of free roadside assistance will be given to every 2009 Flagstaff customer. This is just one more way to say "Thank you" and to ensure an enjoyable traveling experience.



FOREST RIVER'S HALLMARK OF EXCELLENCE:

## PRE-DELIVERY INSPECTION FACILITIES



### THAT'S 20,000 SQUARE FEET OF QUALITY ASSURANCE. THE BARE ESSENTIALS FOR A PREMIUM PRODUCT.

Brought online in 2005, Forest River is proud of its state-of-the-art test facility. This beautiful building blends many of the old tried and true methods of testing our diverse types of RVs with new innovative ways of solving quality issues. Being centrally located to most Forest River manufacturing facilities, this 20,000 square foot PDI (Pre-delivery Inspection) test building gives immediate daily feedback to individual managers. This assures the production facilities that nothing has slipped by the plant's quality assurance personnel and the units are "green" and ready to ship.

### YOUR FLAGSTAFF DEALER

For details on Flagstaff's complete warranty program, see your Flagstaff dealer. When it comes to backing products with the same quality and commitment it has when it begins the manufacturing process, the only name you have to remember when you're looking for a recreational vehicle is Flagstaff. Flagstaff offers the following additional limited warranties to the original purchasers. Consult written warranty for details.

1. Twelve-year vinyl roof warranty,
2. Two-year fiberglass warranty,
3. Five-year axle warranty,
4. One-year bumper to bumper,
5. Available second-year warranty.



All specifications contained herein are based on the latest product information at time of printing. Forest River reserves the right to make changes in colors, materials, equipment and specifications at any time without notice and assumes no responsibility for any errors in this brochure.