



 THE EXECUTIVE®
2009

"Everything we've waited for is here."



MONACO®

DRIVING YOUR DREAM.







OXFORD IV | NATURAL CHERRY | MIDNIGHT EMBER III



THE EXECUTIVE® | 



MONACO®

DRIVING YOUR DREAM.

This time around, everything's sweeter. The simplest picnic has an air of adventure. Even familiar places are seen with whole new perspective. For one simple reason. You're in The Executive. Your days behind the wheel are highlighted by the road's most elegant ride and handling. While your time at each destination is spent in unsurpassed comfort and luxury. Welcome to the start of something rich and wonderful. Welcome to the next phase of your life.





EXQUISITE TASTES.

Gaze around and you'll see that every ingenious detail plays its role in creating the perfect environment for every aspect of your life. Only the most comfortable dining area. Only the finest appliances. Only the most space-saving features. And only the most state-of-the-art conveniences. From ceramic tile floors to high-gloss Corian® countertops to exquisite crown molding — only the best will do.



OXFORD IV | NATURAL CHERRY | MIDNIGHT LEMBER III





OXFORD IV | NATURAL CHERRY | MIDNIGHT EMBER III



THE EXECUTIVE®
BEDROOM

PERSONALIZED FOR YOU.

Remember, this is your journey — it's all about you. That's why The Executive offers so many great standard and optional features. Queen bed or king? Shower or tub? How about a beautiful ceiling fan, or a 32" LCD TV, or a Bose® Wave radio? In short, everything it takes to make this your home.





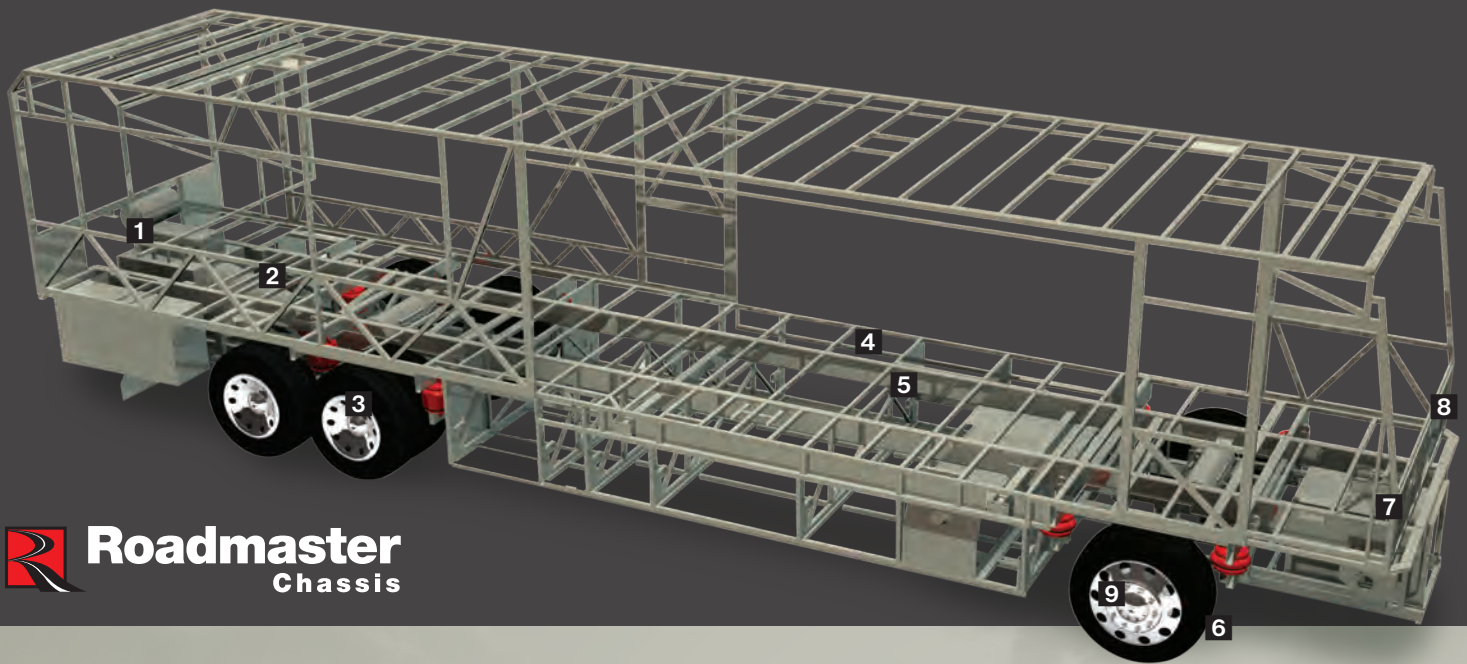
TAKE YOUR SEAT.

After all, this is the main attraction. Taking the helm and feeling the full measure of The Executive's power and responsiveness. Every switch, every screen, every gauge is artfully positioned to give you the ultimate control.

There's big scenery out there, and you'll see it all through the enormous Panaview™ 1-piece windshield. And to get you precisely where you want to be, you can count on a GPS navigation system with a touchscreen monitor. Shown on the left is the color monitor for the coach's rear vision system.



OXFORD IV | NATURAL CHERRY | MIDNIGHT EMBER III



ROADMASTER S-SERIES SEMI-MONOCOQUE CHASSIS

1 10,000 lb. hitch receiver offers powerful towing capacity with 7/4-way trailer plug.

2 Allison® 4000 MH 6-speed transmission for smooth shifting; our exclusive use of synthetic transmission fluid allows for up to three-year maintenance intervals.

3 Cushion Air Glide suspension system positions ten shocks and ten air bags, eight of which are outboard mounted with auto-leveling for greater stability, a smoother ride and the best handling in its class.

- Unique three-degree rear axle tilt perfectly aligns the engine, transmission and differential, minimizing stress on the drivetrain and reducing noise in the coach.

- Automatic Traction Control (ATC) eliminates wheel slippage in slick conditions and heightens control.

- Tag axle lifts for added maneuverability in tight spots.

4 Full-length frame rails fabricated from 3" by 8" by 1/4" 60,000 PSI structural steel; rails are spaced 44" on center for a wider stance and unmatched strength.

5 The semi-monocoque design, with trussed superstructure, distributes stress evenly throughout the entire chassis and adds strength to sidewalls and bays.

6 P295/80R/22.5 Goodyear steel-belted all-season tires ensure a safe and quiet ride (G670 RV tire).



7 The R.H. Sheppard power steering box allows for a 50-degree front wheel turn angle in both directions for better maneuverability and returns the steering wheel to its center position to eliminate driver fatigue.

8 All chassis are equipped with steel cage construction, steel firewall and steel stepwell for added safety.

9 Accuride rim with AccuShield coating that cleans easily with soap and water.

CUMMINS® ISX 525 HP

The Executive rules the road with a big Cummins® ISX-525 HP diesel engine with impressive torque at the RPM where you need it most. We'd also like to call your attention to an all-new option for 2009 — the Cummins® ISX-650 HP engine. Power you never dreamed possible.



ALL WITHIN REACH.

The Executive's roomy storage bays feature insulated side-swing doors with power locks. Full pass-through compartments easily accommodate larger items, and a slide-out tray means no awkward bending or reaching. An electric slide-out tray makes an excellent option.



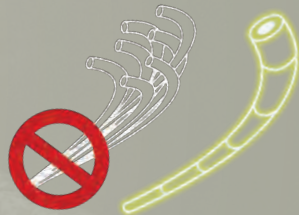
THE DIFFERENCE IS IN THE DETAILS.

Take the wheel of a luxury motorhome, and you're taking the wheel of the chassis it rides on. That's why The Executive rides exclusively on a Roadmaster chassis that is custom built to deliver the very best diesel motorhome experience. Roadmaster's semi-monocoque construction utilizes the most advanced design and engineering to distribute stress evenly throughout the entire chassis, reducing the possibility of torque or twisting and increasing durability and reliability. The Cushion Air Glide suspension system features 10 shocks and air bags, eight of which are outboard mounted, and the system is supported by the largest ping tanks in the industry. And front and rear disc brakes (drum on the tag axle) provide added security, especially in poor road conditions. It's the ultimate foundation for a luxury ride.

MULTIPLEX WIRING

Multiplex wiring, used throughout the coach, replaces cumbersome bundles of wire with separate modules. These modules communicate via a single wire, making servicing easier and reducing the overall weight of the RV.

A service technician can simply hook up a laptop directly to the modules for easy troubleshooting.



8-LAYER MOLDED FIBERGLASS ALL-SEASON FOAM INSULATED ROOF

(top to bottom)

- One-piece 1/4" fiberglass roof is crowned for easy water runoff and seamlessly joined with front and rear caps; non-skid walkways provide added safety and convenience
- Vapor barrier
- 3-1/2" tapered bead foam supports the crowned roof; center tunnel houses wiring and air conditioner ducts
- 1/4" marine grade plywood sheeting
- Tubular steel framework
- State-of-the-art closed cel foam seals every nook and crevice
- Luaun and vinyl paneling are Vac-U-Bonded
- Padded vinyl interior headliner absorbs sound and is easy to clean



6-LAYER LAMINATED GEL COAT FIBERGLASS SIDEWALLS

(left to right)

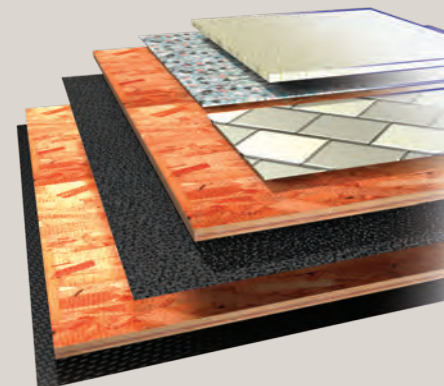
- Decorative wall coverings
- Luaun paneling; walls are Vac-U-Bonded for added strength
- Heavy-gauge tubular steel and 4" steel plate backers
- State-of-the-art closed cel foam seals every nook and crevice
- Luaun paneling
- Gel coat fiberglass outer wall



5-LAYER FLOORING

(top to bottom)

- Tile or 1/2" carpet pad and carpeting
- OSB flooring provides strength and durability
- Decibel paper intercepts and dampens road noise
- OSB flooring
- Waterproof Darco underbelly provides moisture barrier



WARRANTIES

12 MONTH/24,000 MILE basic limited warranty

5 YEAR/50,000 MILE limited warranty on aluminum or steel frame structure of sidewall, roof, front and rear cap

3 YEAR/50,000 MILE limited warranty on Roadmaster chassis

See owner's manual for complete details.

STAINED OAK



NATURAL OAK



STAINED CHERRY



NATURAL CHERRY



BLACK COSMOS III



CEDAR GLADE III



CHOCOLATE MINT III



MIDNIGHT EMBER III



- Carpet A
- Dinette B
- Sofa C
- Bedspread D

A	B	C	D
---	---	---	---

NATURAL MAPLE



NOW FOR THE HARD PART.

Choosing The Executive was easy. Now, it's time to make it your own. For 2009, our designers are pleased to present a stunning array of standard and optional decors and cabinetry styles. But don't worry, even if you end up flipping a coin, you'll both win.

RALPH LAUREN BLACK PEARL



RALPH LAUREN KINGSBRIDGE



RALPH LAUREN WINDERMERE

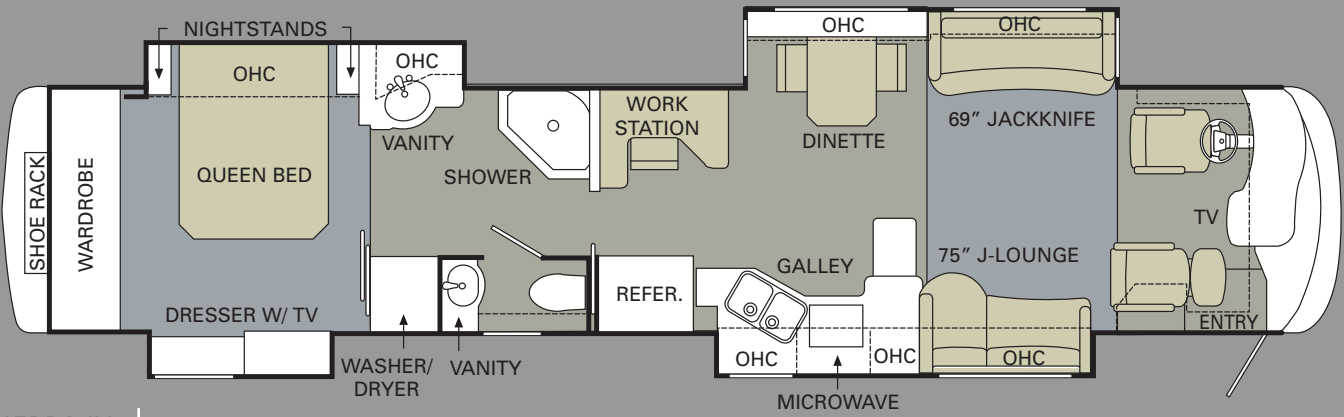


RALPH LAUREN PACKAGE:

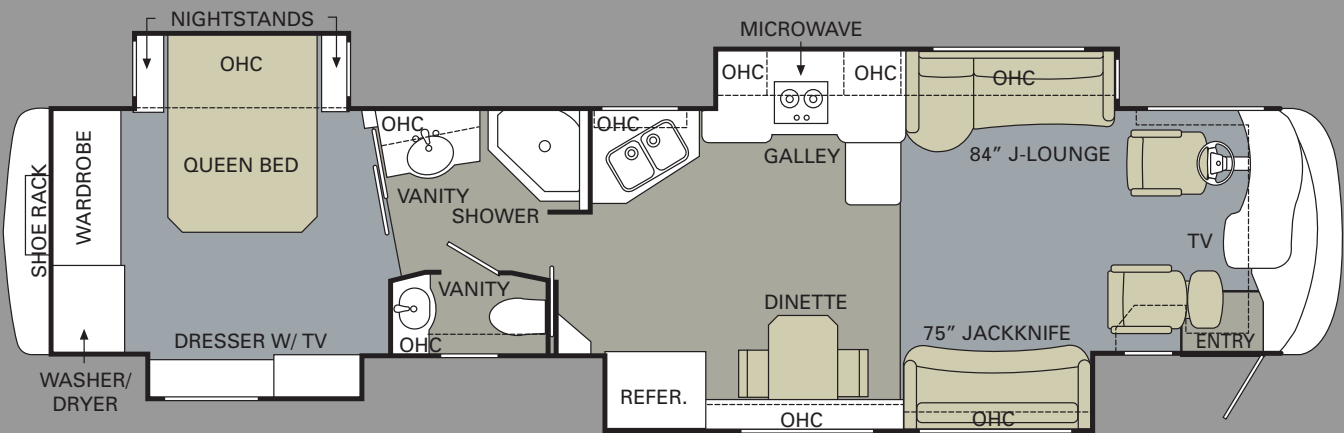
Here's a feast for your senses. Our exclusive Ralph Lauren package offers upgraded features throughout the coach. Because we want your life on the road to be beautiful.

- › Exclusive Ralph Lauren Fabrics, Both Living Room and Bedroom
- › Upgraded Villa Furniture Featuring 2-Tone Ralph Lauren Fabric/Leather and Villa Dinette Chairs
- › Upgraded Galley and Lavatory Faucets
- › Upgraded Tumbled Stone Galley/Bath Backsplashes ILO Corian®
- › Exclusive Fabrica Carpet
- › Additional Decorative Pillows in Ralph Lauren Fabrics
- › Upgraded Decorative Lighting
- › Detailed Decorative Carved Headboard
- › Upgraded Carved Slide-Out Fascia
- › Upgraded Hardware Throughout
- › Black Microwave

Note: Colors depicted are a reasonable representation though they may not be an exact match of the actual colors due to variances in processing and production. See your dealer for actual fabric and paint chip samples.

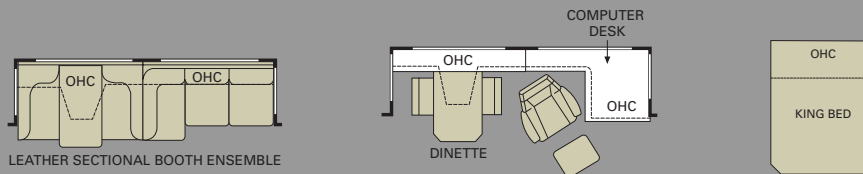


SIERRA IV



OXFORD IV

FURNITURE OPTIONS:



THE VIEW FROM ABOVE.

We invite you to take a moment and look over two of the most spacious, refined motorhome floorplans ever designed. For 2009, The Executive is available in the Oxford IV, featuring a new, deeper bed slide-out and the Sierra IV, with a bedroom wardrobe that spans the width of the coach. Both luxurious models give you an overall length of nearly 45 feet.

■ TILE ■ CARPET



EMERGENCY ASSISTANCE
SALES • TECH • ROADSIDE

WE'RE HERE. ANYTIME, EVERY TIME.

- Reach us anytime — literally — via our live customer support line.
- Drive in to one of our 350 Service Centers.
- Enjoy the first year free when you enroll in our Owner Advantage Roadside Assistance Program.
- See where it all begins with a tour of our facility in Oregon. Call 1-800-634-0855 to find out more.



INTRODUCING THE OLYMPUS IV.

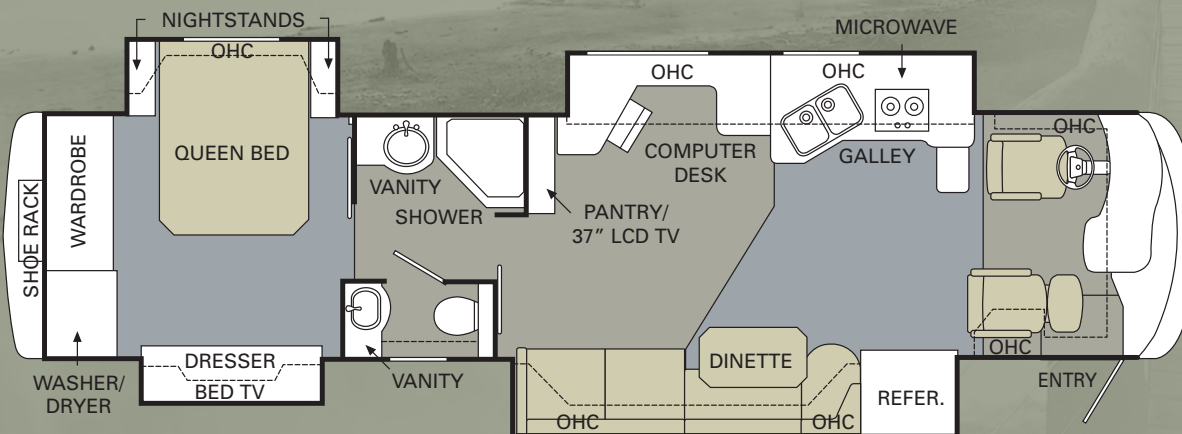
New for 2009 is the exciting Olympus IV luxury edition. This unique model is a true powerhouse, offering amazing horsepower (optional Cummins® ISX-650) in a 40' floorplan. Other tantalizing features include all-new exterior graphics and paint colors, opposing flush-floor slide-outs in the living area, and beautiful new amenities throughout.



OLYMPUS IV LUXURY EDITION

The luxury edition is just what it says – pure luxury. And with sparkling new features like these, that's exactly what your life on the road will be.

- › Power vienna shades in living and dining room
- › 37" LCD on Swing-Out Arm with Blue Ray DVD player in living room
- › Wine chiller with decanter/desk combination
- › Bed overhead cabinet matching dresser, with sliding shutters and 32" TV
- › Deluxe bath accent lighting, activated by motion sensor
- › Combination sofa/wraparound dinette seating area
- › Radiant Midnight decor (available only on Olympus IV)



OLYMPUS IV

Due to continuous product improvement, please see the website for the latest in standards and options, specifications, and technical data. **Go to www.monacocoach.com.**

	Weight Ratings (Lbs.)					Measurements	Wheelbase	Overall Length	Overall Height (with A/C) (add 5" for satellite option)	Interior Height	Interior Width	Exterior Width	Tank Capacity (Gal.) ²				
	Gross Vehicle	Gross Combined ¹	Front Gross Axle	Rear Gross Axle	Tag Axle								Gray Tank	Black Tank	Fresh Tank	LP Tank ³	Fuel Tank
Olympus IV	50,160	60,160	15,160	23,000	12,000	235"	40' 11"	12' 8"	84"	96"	100.5"	70	40	100	25	150	
Sierra IV	50,160	60,160	15,160	23,000	12,000	235"	44' 11"	12' 8"	84"	96"	100.5"	70	40	100	25	150	
Oxford IV	50,160	60,160	15,160	23,000	12,000	235"	44' 11"	12' 8"	84"	96"	100.5"	70	40	100	25	150	

¹Towing capacity is limited by GCWR; your vehicle's towing capacity is the difference between the GCWR and the actual vehicle weight, including all water, fuel, passengers and cargo. Your towed vehicle should be equipped with auxiliary brakes if the weight of the towed vehicle exceeds 1,000 lbs. Consult your owner's manual for further towing information.

²All tank capacities are estimated based upon calculations provided by the tank manufacturers and represent approximate capacities. The actual "usable capacity" may be greater or less than the estimated capacities based upon fabrication and installation of the tanks.

³Actual filled LP capacity is 80% of listing due to safety shut-off required on tank.

The actual overall length of the recreational vehicle may differ from that indicated in the brochure due to variances in the manufacturing process and/or installed components. The actual length may be greater or less than that indicated. Due to the large variety of options and floorplan arrangements available to our customers, actual weights for each unit can differ significantly. Monaco Coach provides a weight sticker on each unit we produce which includes that unit's tank capacities and approximate weight. Consult your local Monaco Coach dealer for unit availability and further information. The information printed in this brochure reflects product design, fabrication, and component parts at the date of printing. The manufacturer reserves the right, at any time, to make changes in product design or material or component specifications as its sole option, without notice. This

includes the substitution of components of a different brand or trade name which will result in comparable performance. All information printed in this brochure is subject to change after the date of printing. Some features shown or mentioned in this brochure are optional and may only be available in selected floorplans. Photographs may show props or decorations that are not standard equipment on Monaco Coach models. Monaco Coach, the Monaco logo and its design, are registered trademarks. All other products and company names are trademarks and/or registered trademarks of their respective holders. While the color of the motorhome's exterior and the interior fabrics depicted in this sales brochure are fair and reasonable depictions, the colors depicted may not be an exact match of the actual colors because of the variances in photo-processing and variances caused by inserting the photographs

within the sales brochure. **Due to product improvements, changes during the model year and/or transcription errors that may occur, information represented within this brochure may not be accurate at the time of your purchase. If certain information is significant to your purchasing decision, please confirm the information with your dealer prior to submitting your order.** Component part and appliance manufacturers issue limited warranties covering those portions of the recreational vehicle not covered by the Limited Warranties issued by Monaco Coach Corporation. To learn which specific component parts and appliances are excluded from the Limited Warranties issued by Monaco Coach Corporation, please contact your selling dealership or Monaco Coach Corporation directly, or review the warranty packet inside the recreational vehicle.

BODY CONSTRUCTION

- › Heavy-Duty Steel Superstructure with Steel Cage Cockpit Construction
- › Seamless One-Piece Molded Crowned Fiberglass Roof
- › All-Season Foam Insulated Roof
- › Laminated Gel Coat Fiberglass Walls
- › Five-Layer Flooring with Two Layers of OSB Flooring
- › Deluxe Full-Body Paint
- › Panaview™ 1-Piece Front Windshield
- › Double-Head Power-Controlled Heated Chrome Exterior Mirrors with Turn Indicator Lights
- › Halogen Fog Lamps
- › Daytime Running Lights
- › Recessed Side Docking Lights
- › Dual Trumpet Air Horns
- › Entry Step Storage
- › Insulated Aluminum Baggage Doors with Power Locks
- › Lined Pass-Through Storage Compartments
- › Interlocking Aluminum Framed Slide-Out Houses
- › Storage Bay Slide-Out Tray (Complete Pass-Through)
- › Flush-Floor Living Room Galley Slide-Out (Olympus IV Only)
- › Rear Ladder
- › Monaco Full-Length Mud Flap with Stainless Steel Logo
- › 3M Film Front Mask

OPTIONS

- › Storage Bay Slide-Out Tray (One Side)
- › Electric Slide-Out Storage Tray (Complete Pass-Through)

CHASSIS/ENGINE/SUSPENSION

- › Roadmaster S-Series Semi-Monocoque Chassis
- › Cummins® ISX-525 HP Engine with Allison® 4000 MH 6-Speed World Transmission and Electronic Shifter
- › Torque: (@ 1,300 RPM) 1,650 lbs./ft. Max. Net
- › Engine Displacement: 912"/ 15.0L
- › Dual Fuel Fill
- › 200 Amp Alternator
- › Rear Axle Ratio: 4.33:1
- › Tires: 295/80R/22.5
- › Polished Aluminum Wheels
- › Full-Cushion Air Glide Suspension with Ten Shock Absorbers and Ten Air Bags, Eight of which are Outboard Mounted
- › Air Suspension with Ping Tank
- › Automatic Traction Control
- › Anti-Locking Braking System with Front and Rear Disc Brakes
- › Tag Axle with Anti-Lock Braking System
- › Two-Stage Jacobs Engine Brake
- › Power Adjust Steering Column with Ignition Keyhole
- › Prewire for Supplemental Braking System (Wiring Only)
- › Engine Block Heater with Switch on Dash
- › Automatic Air Leveling System
- › 10,000 Lb. Hitch Receiver and 7/4-Way Trailer Plug
- › Remote Inflation Connector

OPTIONS

- › Cummins® ISX 650 HP Engine with Allison® 4000 MH 6-Speed World Transmission and Electronic Shifter: Torque: 1,950 lbs./ft. Max. Net; 912" Engine Displacement
- › Collision Avoidance System
- › Tire Pressure and Temperature Monitoring System

COCKPIT

- › In-Dash Stereo with AM/FM Stereo with iPod Video Direct Cable and Multi-Disc CD Changer
- › GPS Navigation System with Touchscreen
- › Color Rear Vision System
- › In-Dash Driver's Message Center
- › CB Radio Prep (Cable and Antenna)
- › Electric Cockpit Solar Screens with Blackout Shades
- › Manual Privacy Drape
- › Power Sunvisors
- › Pilot and Co-Pilot Side Window Manual Sunscreens
- › Power Driver's Side Window
- › Adjustable Brake and Accelerator Pedals
- › Lighted VIP Smartwheel® with Ignition Key on Column and Controls for Windshield Wipers, ICC and Cruise Control
- › Cruise Control Light on Dash
- › 6-Way Power Pilot and Co-Pilot Seats with Electric Lumbar and Heat; Electric Sliding Seat Cushion and Memory Capabilities on Pilot Seat; Power Footrest on Co-Pilot Seat

OPTIONS

- › Electric Cockpit Solar Screens with Blackout Shades (Manual Side Screen Replaces Sunvisors and Privacy Drape)
- › Electric Privacy Drape
- › CB Radio
- › XM Satellite Stereo (Requires Subscription)
- › Sirius Satellite Radio System (Requires Subscription)
- › Bluetooth® HandsFreeLink® System
- › TripTek/Smartire Pressure Sensor System
- › SEE-Vision Coach Monitoring System
- › Wineguard® Trav'ler Slimline KU/KA Stationary Satellite with 5 LNBs (Receivers Not Included)

APPLIANCES AND ACCESSORIES

- › 17 Cu. Ft. Four-Door Refrigerator with Raised Panel Doors
- › Recessed High-Output 2-Burner Cooktop with Flush-Mounted Covers
- › Spacesaver Convection Microwave with Touch Control
- › Electric TV Antenna
- › KVH R5 In-Motion Digital Satellite System
- › 32" LCD TV Mounted in Living Area Overhead
- › 37" LCD TV Mounted on Swivel Arm in Living Area (Olympus IV Only)
- › 32" LCD TV in Bedroom (Olympus IV Only)
- › Stacked Washer/Dryer (Olympus IV Only)
- › 26" LCD TV in Bedroom
- › Blue Ray DVD Player in Living Area (Olympus IV Only)
- › Wine Chiller Mounted in Slide-Out next to Galley (Olympus IV Only)
- › Home Theater System with DVD/CD Player in Living Area
- › Bedroom DVD Player
- › Universal Remote System for Living Area TV

OPTIONS

- › Residential Refrigerator with Water/Ice Dispenser in Door (Includes Additional Batteries)
- › Stacked Washer/Dryer
- › Central Vacuum System
- › Dishwashing Drawer (N/A: Oxford IV)
- › 37" LCD TV in Living Area Overhead (N/A: Olympus IV)
- › 37" LCD TV Mounted in Living Area Ceiling (N/A: Olympus IV, Sienna IV)
- › 32" LCD TV in Bedroom
- › Bose® Wave Radio in Bedroom
- › Exterior 32" Sony LCD TV with DVD Player (N/A: Oxford IV)
- › KVH R6 In-Motion Digital Satellite System
- › Multi-Satellite High-Definition Dish

INTERIOR

- › Stained or Natural Oak Cabinetry (N/A: Olympus IV)
- › Natural Cherry (Olympus IV)
- › Dinette Wall Cabinet with Corian® Top
- › Built-In Storage Area for Galley Sink Covers
- › Low-Friction Roller Drawer Guides
- › Recessed Ceiling Design
- › High-Gloss Corian® Countertops Throughout (N/A: Olympus IV)
- › Integrated Sinks in Vanity and Galley
- › Backlit, Etched Glass Backsplash in Galley (N/A with Ralph Lauren)
- › Tile Backsplash in Vanity Area
- › Glass Splash Guard at End of Galley Area
- › Day/Night Shades with Blackouts Throughout (N/A: Olympus IV)
- › Mini Blinds in Galley and Bath
- › Power Vienna Shades in Living Room and Dining Area with Day/Night Shades with Blackouts in Bedroom (Olympus IV Only)
- › Decanter Cabinet above Wine Chiller in Slide-Out next to Galley (Olympus IV Only)
- › Glass Overhead Cabinetry above Living Room Desk and Wine Chiller in Slide-Out next to Galley (Olympus IV Only)
- › Bedroom Overhead Cabinet with Sliding Shutters Concealing Bedroom TV (Olympus IV Only)
- › Cabinet Doors with Decorative Acrylic Inserts (Olympus IV Only)
- › Four-Compartment Drawer Organizer in Galley
- › Designer Textured Carpet in Living Area and Bedroom
- › Ceramic Tile Flooring in Galley and Bathroom
- › Ceramic Tile Flooring in Cockpit Area
- › Flat Panel Door for Private Bath
- › Bedspread and Pillows
- › Nightstands with Corian® Countertops
- › Corian® Windowsills in Living Area
- › Lighted Vanity Mirrors (Olympus IV Only)
- › Recessed Living Area Surround Sound Speakers
- › Satin Nickel Hardware Throughout

OPTIONS

- › Interior Decors: Chocolate Mint III, Cedar Glade III, Black Cosmos III, Midnight Ember III (N/A: Olympus IV)
- › Interior Decor: Radiant Midnight (Olympus IV Only)
- › Ralph Lauren Decors: Kingsbridge, Black Pearl, Windermere (N/A: Olympus IV)
- › Stained or Natural Cherry, Natural Maple (Olympus IV Only Available with Natural Cherry)
- › Manual Solar Screens with Blackout Shades Throughout (N/A: Olympus IV)
- › Ceiling Fan in Bedroom
- › Sculptured Carpeting in Living Area
- › Full-Tile Living Room Floor
- › Undermounted Glass Sink in Vanity (Olympus IV Only)

FURNITURE

- › Legless Dinette Table with Two Freestanding Chairs and Two Folding Chairs (N/A: Olympus IV)
- › Combination Wraparound Dinette with Jackknife Sofa and Two Folding Chairs (Olympus IV Only)
- › Computer Desk with Lift Recliner in Slide-Out next to Wine Chiller and Galley, Locking File Drawer below Wine Chiller (Olympus IV Only)
- › Roadside: Fabric Sleeper Sofa with Drawer (Curbside on Oxford IV) (N/A: Olympus IV)
- › Curbside: Leather Sleeper J-Lounge with Drawer (Roadside on Oxford IV) (N/A: Olympus IV)
- › Queen Bed with Pillowtop-Hinged Mattress

OPTIONS (Living Area Furniture Location is Floorplan Dependent)

- › King Bed (72" x 80")
- › King Air Mattress with Digital Remote
- › Computer Table with Leather Euro-Recliner and Ottoman
- › Leather Hide-a-Bed
- › Leather Hide-a-Bed with Air Mattress
- › Leather Sectional Booth Dinette Ensemble
- › Two Folding Chairs with Booth Dinette Ensemble
- › Legless Side-Slide Corian® Dinette Table with Two Freestanding Dinette Chairs and Two Folding Chairs (Olympus IV Only)
- › Hide-A-Bed Sofa with Air Mattress (Replaces Computer Table and Wine Chiller on Olympus IV Only)

ELECTRICAL SYSTEMS AND LIGHTS

- › 50 Amp 120/240V Distribution Panel and Power Cord
- › Power Cord Reel
- › Onan® 10.0 kW QD Generator on Power Slide-Out Tray with Auxiliary Start Switch and Automatic Temperature Start
- › 2,800 Watt Pure Sine Wave Inverter with Auto Gen Start and Auto Temp Start
- › Halogen Map Lights above Driver/Passenger Seating
- › Deluxe Bath Accent Lighting Package (Olympus IV Only)
- › Switches for Decorative Lights on Both Sides of Bed
- › Lighted Utility Center
- › Underhood Utility Light
- › 120V Outlet in Private Bath
- › 120V Outlet in Bed Base
- › 120V Receptacles in Outside Storage Compartment
- › Lighted Exterior Storage Compartments
- › Two 6V Deep Cycle House Batteries
- › Three 12V Chassis Batteries
- › Battery Remote Fill
- › Surge Guard Automatic Transfer Switch
- › Multiplex 12V Wiring for Dash/Instrument Panel Gauges and Interior of Coach

OPTIONS

- › Solar Panel (100 Watt)

PLUMBING AND LP SYSTEMS

- › Central Water Filtration System in Service Bay
- › Manabloc Water System for Entire Coach
- › Insulated Systems Compartment with Easy Access to Hook-Up
- › Water Pump Switch in Galley, Bathroom and Service Bay
- › China Toilet
- › Super Service Center
- › Corian® Shower with Accent Tile in Walls and Corian® Shower Caddy
- › Shower Head Shut-Off
- › RV Sani-Con Tank Drainage System
- › Black and Gray Holding Tank Rinsing System
- › Outside Faucet with Hot and Cold Water
- › Power Water Hose Reel
- › Soap Dispenser in Galley
- › Fresh Water Tank with Auto Shut-Off and Auto Fill

OPTIONS

- › Insta-Hot® Water System
- › Bathtub (N/A: Olympus IV)

HEATING, VENTS AND AIR CONDITIONING

- › Aqua-Hot® Heating System
- › Three Low-Profile Ducted 15M BTU Roof Air Conditioners with Wall Thermostat and Heat Pump
- › Electronic AC/Heat Climate Control System
- › Center Defrost Vents
- › 12V Attic Fan with Wall Thermostat in Private Lavatory and Galley

OPTIONS

- › Galley Low-Profile Baseboard Heater
- › Radiant Floor Heating in Galley and Bath
- › Radiant Floor Heating in Living Room, Galley and Bath with Full Tile Option

WINDOWS, DOORS AND AWNINGS

- › Flush-Mounted Radius Dual Pane Safety Glass Dark Tinted Windows
- › Front Entry Door with Air Seal, Removable Top Screen
- › Keyless Remote Entry System with Pocket Remote
- › Topper Awnings on Slide-Out Houses
- › Carefree® Manual Window Awnings
- › Roof-Mounted Girard® Automatic Front Patio Awning (N/A: Olympus IV)
- › Girard® Front Patio Awning with Auto Valance (Olympus IV Only)

OPTIONS

- › Girard® Automatic Front Door Awning
- › Girard® Roof-Mounted Automatic Rear Patio Awning
- › Girard® Window Awnings (Except Private Lavatory Window)

SAFETY

- › Backup Alarm
- › Fire Extinguisher
- › Deadbolt Lock on Entrance Door
- › Lighted Interior and Exterior Grab Handles
- › 120V GFI Protected Circuit
- › LP Gas Detector
- › Smoke Detector
- › Carbon Monoxide Detector
- › Integrated Pilot and Co-Pilot Three-Point Seatbelts
- › Third Brake Safety Light
- › Egress Window

OPTIONS

- › Security Safe
- › Deluxe Security Alarm System

ALL ROADS LEAD TO WWW.MONACOCOACH.COM.

Wherever the road takes you, you're never more than a click away from your friends at Monaco. Just go to www.monacocoach.com for all the latest product news, club dates and destinations, a dealer locator function, and factory tour information. You can also e-mail us directly through the site at any time.





MONACO®

DRIVING YOUR DREAM.

Take a closer look, and you'll discover that Monaco Coach Corporation gives you more industry "bests" than any other RV manufacturer. Like the incomparable ride and handling of the Roadmaster Chassis. The convenience of our 3,500 service centers. The peace of mind of 24/7 roadside assistance. The value of Monaco Financial Services. And the online support of monacocoach.com. At Monaco, we've built our reputation by listening to you — and answering to you. And that's the difference that's made us the best.

SIGNATURE SERIES



THE EXECUTIVE®



DYNASTY®



CAMELOT™



DIPLOMAT®



KNIGHT®



CAYMAN®



LAPALMA®



MONARCH®

