

Standards & Options

INTERIOR STANDARDS

KITCHEN & APPLIANCES

- Solid Cherry Hardwood Cabinetry
- Stiles Pre-Drilled & Screwed Together
- Residential Sized Storage Drawers w/ Solid Wood Bottoms
- Pots & Pans Storage
- Full-Extension Ball-Bearing Drawer Guides
- Residential Hidden Hinges
- EGS Steel Backed Cabinet Anchors
- Large Residential Pantry w/ Appliance
- Garage & 110v Outlet
- LG Solid Surface Countertops
- LG Solid Surface Sink Covers
- Raised Mosaic Backsplash
- Stainless Steel Sink
- High Rise Faucet w/Pull Out Sprayer
- Over-Island Lighting
- Samsung® Stainless French Door Residential Refrigerator w/ 1000w Inverter
- 3-Burner Flush Mount Stainless Stove
- 22" Deluxe Stainless Baker's Oven
- 30" Stainless OTR Microwave w/ Exhaust Fan

GENERAL INTERIOR

- Straight Roof Line
- LED Recessed Ceiling & Accent Lights
- Solid Hardwood Slide Fascia
- 7' Interior Slide Room Height
- 15,000 BTU WhisperQuiet A/C w/ Closed Zone Thermostat (2nd A/C mandatory in Bedroom)
- 40,000 BTU Furnace
- Premium Lino Flooring in Living Area & Bathroom

LIVING AREA

- Gold Collection Furniture Package:
- Residential Visionary Sofa (w/ Tri-Fold)
- Theater Seating Recliners (model specific)
- Dinette w/ Leaf Extensions
- 2 Premium Dinette Chairs
- 2 Folding Dinette Chairs
- Night Roller Shades
- Premium Entertainment Center
- Insignia® LED HDTV
- Jensen® All-in-one Entertainment Interface (CD/DVD/Bluetooth/AM/FM) w/ Surround
- Pre-wired for Winegard® Satellite Systems
- 15k BTU WhisperQuiet A/C w/Closed-Zone Thermostat

BATHROOM

- One Piece Fiberglass Shower
- Niagara Waterfall Glass Shower Door
- Domed Skylight in Shower

- Porcelain Foot Flush Toilet
- Large Mirrored Medicine Cabinet
- Heat & A/C Duct in Bathroom
- Large Linen Closet w/ W/D prep
- Power Roof Vent
- Adjustable Handheld Shower Head

BEDROOM

- 60" x 80" Queen Mattress
- 110v Outlets on Both Sides of Bed
- Residential Dresser w/ Drawers
- Walk-In Closet with Shelving (8 ft. wide) & A/C duct
- Night Roller Shades
- Shaw® Residential Carpet w/ Premium Pad

EXTERIOR STANDARDS

CONSTRUCTION & CHASSIS

- Custom FIT Chassis
- Falcon 12"/10" I-Beam Drop Frame
- Roto-Flex Pin Box
- Falcon Hydraulic Slide Out System w/ Manual Override (Main Slides)
- Falcon EZ Lube 7,000 lb. Axles
- Equa-Flex Suspension System
- Correct Track™ Suspension Alignment System
- Falcon 6-Point Hydraulic Jacks w/Auto Leveling
- Falcon Aluminum 4-Step Entry

SIDEWALLS

- 2" Laminated Wall
- Sanded Block Foam Insulation
- Double Welded Aluminum Frame
- Double Luan Backer
- High-Gloss Gel Coat Fiberglass

FLOOR

- 5/8" Floor Decking
- 3" Aluminum Subfloor - 11" on Center
- 2 Layers of Batten Fiberglass Insulation
- 2 Layers of Flex Foil Insulation
- Darco Moisture Barrier
- Corrugated PVC Enclosure
- Fully Enclosed Underbelly w/ Heated Tanks

ROOF

- One Piece Alpha Superflex Material
- Double Trusses at each A/C
- 3/8" Roof Decking
- 2 Layers of Batten Fiberglass Insulation
- 1 Layer of Flex Foil Insulation
- Fully Walk-able
- Arched for Water Runoff

GENERAL EXTERIOR

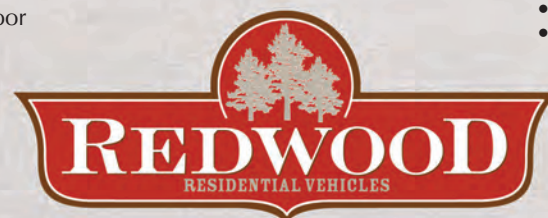
- Front & Rear Insulated Fiberglass Caps
- LED Pin Box Light
- Aerodynamic Profile
- Exterior Docking Station w/ All Hookups & Black Tank Flush
- Winterization Valve
- Slam Latch Baggage Doors
- Fully Finished, Heated & Insulated Pass-Through Storage
- 104 Gallon Fresh Tank
- (2) 45 Gallon Grey Tanks
- 45 Gallon Black Tank (2 on 38MBS)
- Furnace-Heated Tank System
- Enclosed & Heated PEX Water Lines
- Seamless Residential Heat Ducts
- Radius Zoned A/C Ducting
- Kinro® Frameless Windows
- Carefree Adjustable Awning w/ LED Lights
- Progressive 90 Amp/12v DC Power Converter
- 50 Amp Detachable Power Cord
- Dual Battery Box
- 110v Exterior Receptacle
- Battery Disconnect Switch
- (4) E Range Tires (w/ Spare)
- 8 Lug Aluminum Rims
- 2" Self-Adjusting Drum Brakes
- (2) 30 lb. LP Tanks w/Auto Change Over
- R-42 Main Floor , R-28 Roof , R-21 Bath Deck , R-21 Front & Rear Caps , R-14 Slide Ends , R-9 Sidewall

OPTIONS

- 12 cu. ft. Norcold RV Refrigerator w/Ice Maker
- Whirlpool 20 cu. ft. French Door Refrigerator w/Water & Ice Dispenser
- Convection Microwave
- Fisher-Paykel Dishwasher
- King Bed
- Ceiling Fan
- Central Vacuum
- 5100 BTU Fireplace
- 2-pc. Washer/Dryer
- MaxxFan - Kitchen
- MaxxFan - Bathroom
- Water Filtration System
- 2nd 15,000 BTU A/C (Mandatory)
- Heat Pump on A/C(s)
- Partial Paint
- Dual Pane Windows
- Trail-Air Tri-Glide Pin Box
- 5.5 Onan LP Generator
- Generator Prep
- 40 lb. LP bottles
- Holding Tank Heaters
- Outside LP Grill Hookup
- Rear 2" Receiver Hitch
- Slide Awning Package
- 2nd Power Awning w/LED
- Uniguard Awning Upgrade(s)
- 32" Exterior TV
- Insignia® LED HDTV

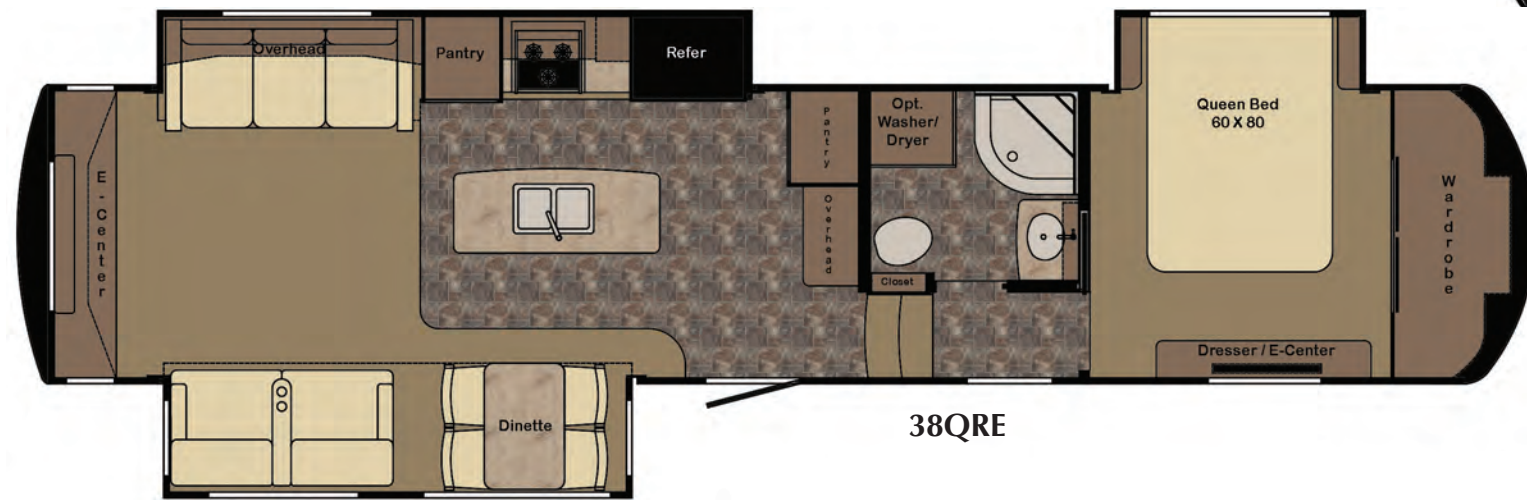
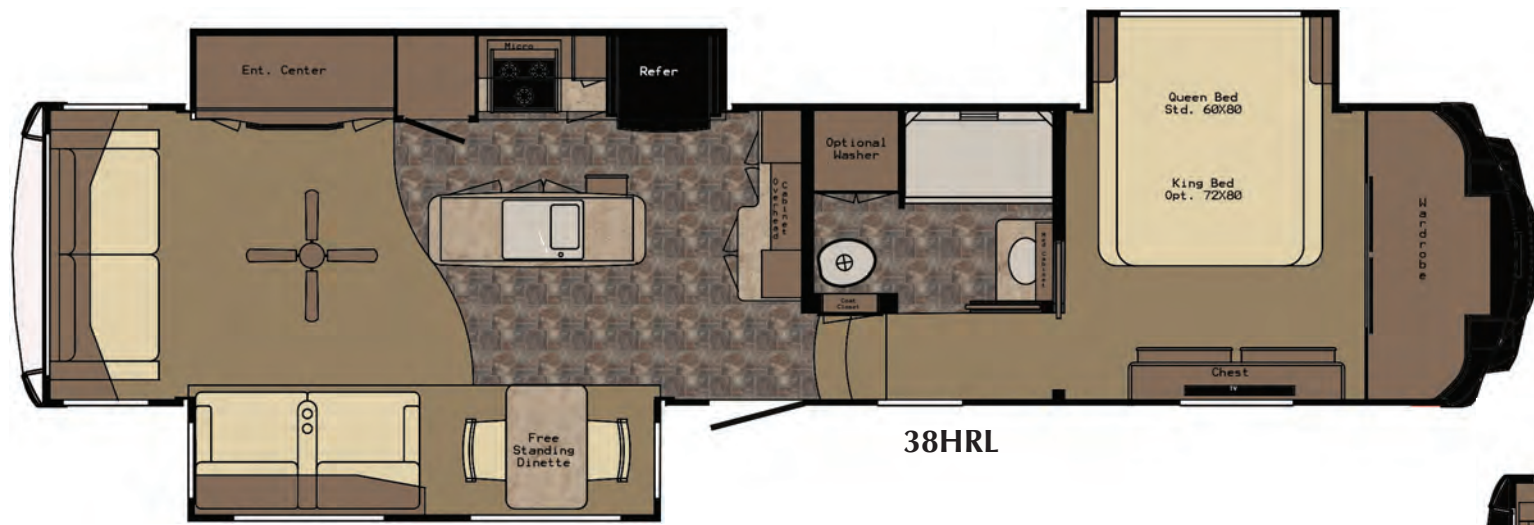
SEQUOIA

Floorplans & Specifications



1140 W Lake Street • Topeka, IN 46571 • www.redwoodrv.com





SEQUOIA	38HRL	38QRE	38GKS	38MBS
Ship Weight (lbs.)	12,970	13,672	TBD	13,720
GVWR (lbs.)	16,000	16,000	16,000	16,000
Carrying Cap. (lbs.)	2,838	2,754	TBD	2,670
Hitch Weight (lbs.)	2,286	2,452	TBD	2,486
Axle Weight (lbs.)	13,162	13,246	TBD	10,904
Ext. Length	39' 8"	40' 3"	42' 2"	40' 4"
Ext. Height	13' 3"	13' 3"	13' 3"	13' 3"
Fresh Water	104	104	104	104
Gray Water	90	90	90	90
Black Water	45	45	45	90
Tire Size	235/85 R16 "G"	235/85 R16 "G"	235/85 R16 "G"	235/85 R16 "G"