

# VENTANA LE

*2017 Diesel Motor Coach*



2017 VENTANA LE DIESEL MOTOR COACH

**NEWMAR**<sup>SM</sup>

WHEN YOU KNOW THE DIFFERENCE<sup>SM</sup>



*discover the difference*



## WE RE-INVENTED THE *diesel pusher*

It started with Comfort Drive,<sup>™</sup> which has revolutionized the RV driving experience by eliminating steering friction - resulting in Class A coaches that handle more like modern-day cars. Today, our customer-driven innovations continue to redefine the diesel segment. In fact, breakthroughs like an available two-full-bath floor plan, class-exclusive Feature Ceiling and the ultra-durable STAR Foundation can all be found on the 2017 Ventana LE - the industry's best diesel-powered value.





Experience the Newmar Difference for yourself. Explore each of the following sections for a complete look at the 2017 Ventana LE.



LIVING AREA



BED/BATH



KITCHEN



EXTERIOR



Full-paint Masterpiece™ Finish | Seaspray Exterior - Floor Plan 4037



# 2017 VENTANA LE

*Now You Can*

## CHASSIS

Freightliner® XCR chassis with available 360-horsepower Cummins® ISB diesel engine\*

## TECHNOLOGY

Standard Comfort Drive™ Steering System delivers more control and less fatigue

## ENTERTAINMENT

JBL® premium cockpit audio system with subwoofer

## OPTIONS

New two-bunk, two-full-bath floor plan option (4042)

\*40' Models Only





01

## NO *compromise* NECESSARY

Enter the 2017 Ventana LE and discover what you've been searching for all along - an affordably priced diesel coach that doesn't force you to choose between features and craftsmanship. Ventana LE delivers quantity and quality, pairing a host of standard amenities such as new custom-crafted Flexsteel® Deluxe leather furniture with handcrafted designer glazed cabinetry made in house by Newmar artisans.





Seaspray décor with available water-resistant luxury plank flooring - Floor Plan 4037





THE FLAVOR OF *home*





Available buffet dinette

## 02

The 2017 Ventana LE serves up much more than the cookie-cutter coaches you'll find elsewhere. Standard glazed maple cabinetry is capped by stylish mitered doors, while a Whirlpool® over-the-range microwave oven is there when you need it. Down below, the metal-pattern backsplash reflects off of a polished solid-surface countertop and under-mounted stainless steel sink.

---

Polished solid-surface countertops with Empire Glazed Maple cabinetry





03

## THIS IS *the life*

While any coach can give you a place to stay, Ventana LE provides you and yours with a home away from home. An available King Bed is capped by a luxurious two-tone padded headboard, with in-room entertainment coming courtesy of a Vizio® LED TV with DVD player. The master bath can now be had with a 40" x 32" residential shower, while select floor plans feature a mid-cabin half bath.





Glass-door shower with Empire Glazed Maple cabinetry





Full-paint Masterpiece™ Finish | Seaspray Exterior





## BUILT TO TAKE YOU *further*

A Freightliner® chassis with V-Ride™ rear suspension and Comfort Drive™? Check. Hill-crushing power from a Cummins® diesel engine? Check. But that's not all. Every Ventana LE gives you power side and entrance door awnings, offers extras like an exterior entertainment center and hammock kit, and receives support from our latest steel superstructure, the STAR Foundation.

# EXTERIOR & INTERIOR *décor*



## SEASPRAY EXTERIOR

*Awning Color: Linen Tweed*



## SEASPRAY INTERIOR

*a. Furniture b. Accent Fabric c. Flooring d. Carpet e. Counter Top*



## MIRAGE EXTERIOR

*Awning Color: Charcoal Tweed*



## MIRAGE INTERIOR

*a. Furniture b. Accent Fabric c. Flooring d. Carpet e. Counter Top*



## OPTIONAL LUXURY PLANK FLOORING



ASTORIA GLAZED MAPLE  
FLOORING



SIENNA GLAZED MAPLE  
FLOORING



EMPIRE GLAZED MAPLE  
FLOORING

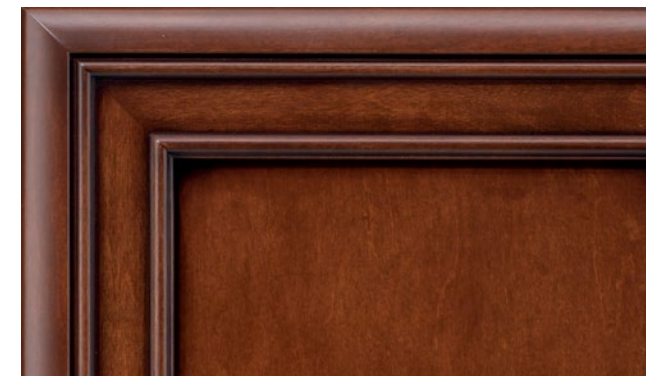
## WOOD OPTIONS



ASTORIA GLAZED MAPLE



SIENNA GLAZED MAPLE



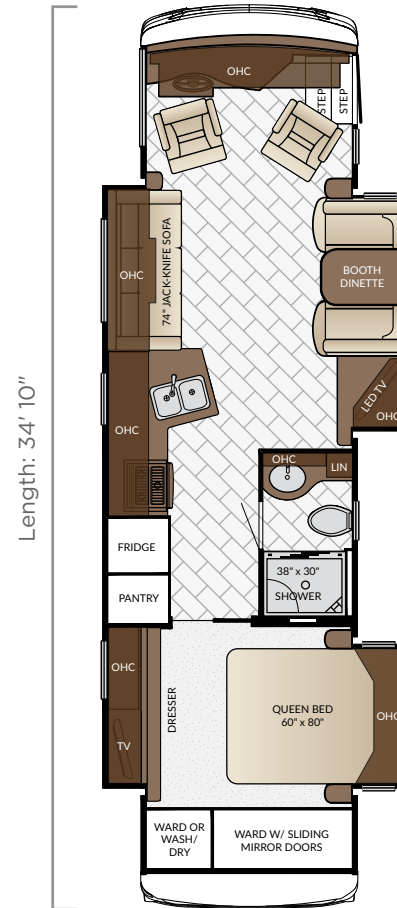
EMPIRE GLAZED MAPLE

# floor plans



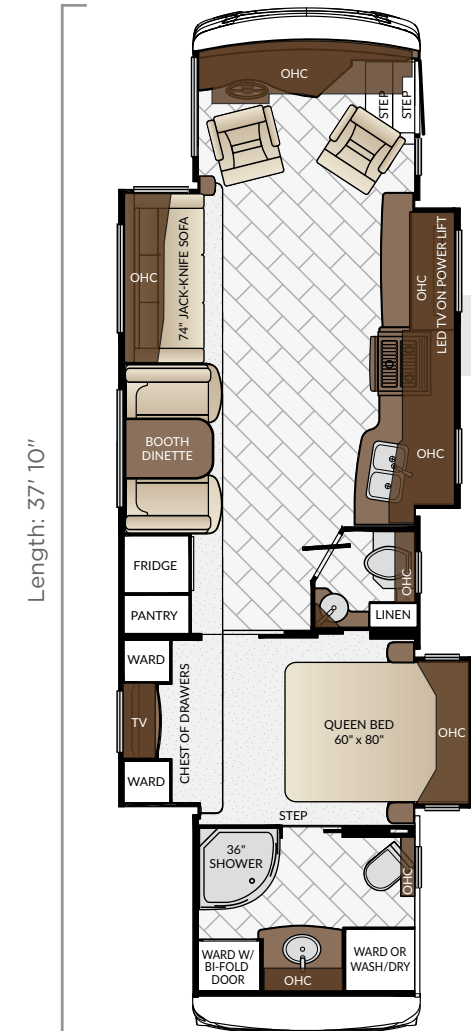
3412

|                     |            |
|---------------------|------------|
| Length              | 34'10"     |
| Width               | 101.5"     |
| App. Overall Height | 12'10"     |
| Interior Width      | 95.5"      |
| Interior Height     | 84"        |
| Grey Tank           | 65 gal.    |
| Sewage Tank         | 45 gal.    |
| Water Tank          | 105 gal.   |
| Propane Tank        | 32 gal.    |
| Furnace             | 35,000 btu |



3436

|                     |            |
|---------------------|------------|
| Length              | 34'10"     |
| Width               | 101.5"     |
| App. Overall Height | 12'10"     |
| Interior Width      | 95.5"      |
| Interior Height     | 84"        |
| Grey Tank           | 65 gal.    |
| Sewage Tank         | 45 gal.    |
| Water Tank          | 105 gal.   |
| Propane Tank        | 32 gal.    |
| Furnace             | 35,000 btu |



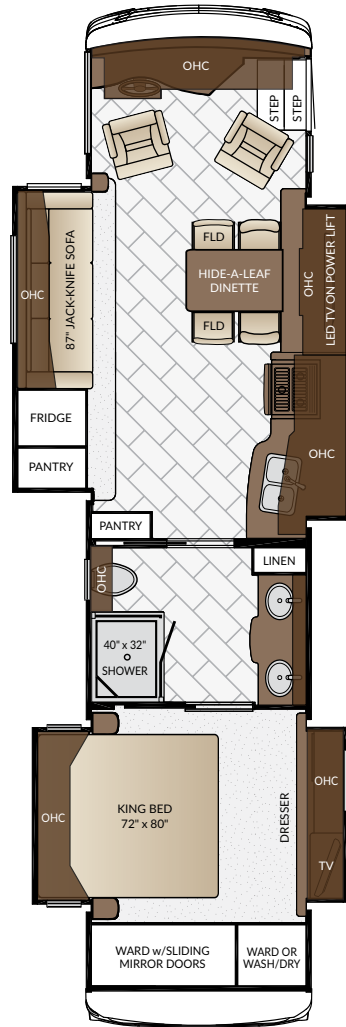
Length: 37' 10"



# 3709

|                     |            |
|---------------------|------------|
| Length              | 37'10"     |
| Width               | 101.5"     |
| App. Overall Height | 12'10"     |
| Interior Width      | 95.5"      |
| Interior Height     | 84"        |
| Grey Tank           | 65 gal.    |
| Sewage Tank         | 45 gal.    |
| Water Tank          | 105 gal.   |
| Propane Tank        | 32 gal.    |
| Furnace             | 54,000 btu |

Length: 37' 10"



# 3724

|                     |            |
|---------------------|------------|
| Length              | 37'10"     |
| Width               | 101.5"     |
| App. Overall Height | 12'10"     |
| Interior Width      | 95.5"      |
| Interior Height     | 84"        |
| Grey Tank           | 65 gal.    |
| Sewage Tank         | 45 gal.    |
| Water Tank          | 105 gal.   |
| Propane Tank        | 32 gal.    |
| Furnace             | 54,000 btu |

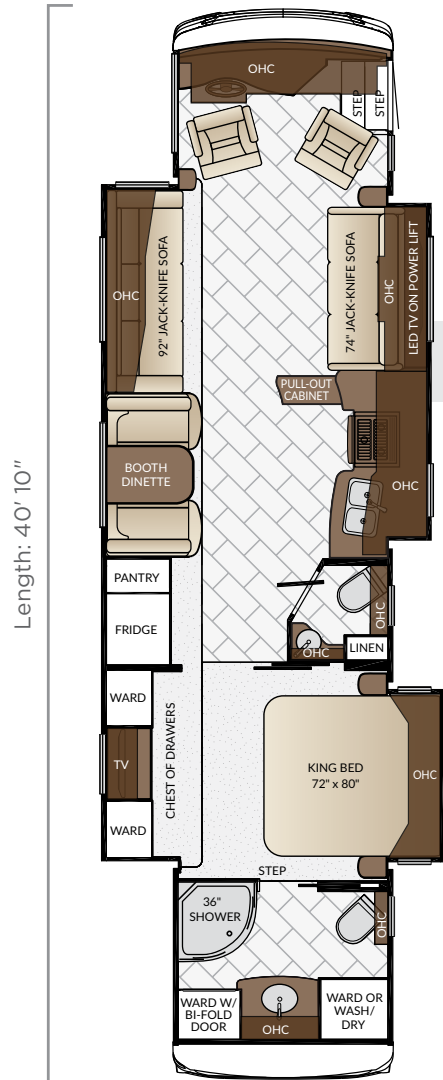
Length: 40' 10"



# 4002

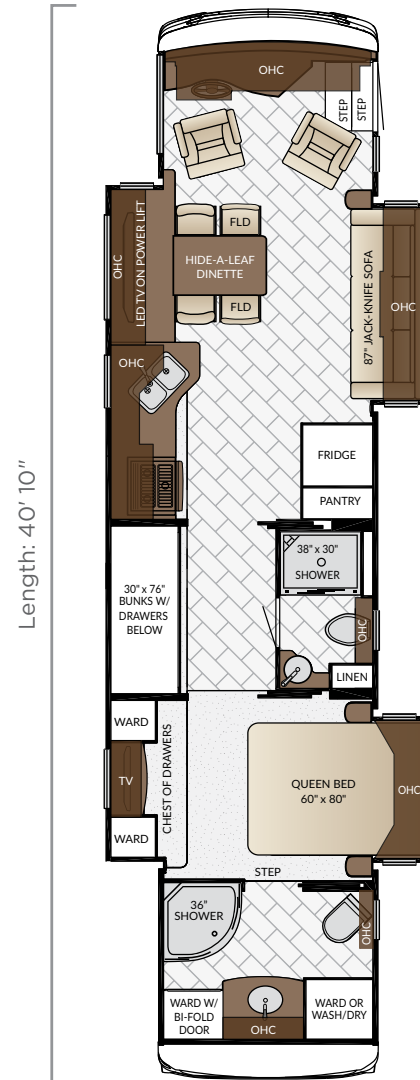
|                     |            |
|---------------------|------------|
| Length              | 40'10"     |
| Width               | 101.5"     |
| App. Overall Height | 12'10"     |
| Interior Width      | 95.5"      |
| Interior Height     | 84"        |
| Grey Tank           | 65 gal.    |
| Sewage Tank         | 45 gal.    |
| Water Tank          | 105 gal.   |
| Propane Tank        | 32 gal.    |
| Furnace             | 54,000 btu |

# floor plans



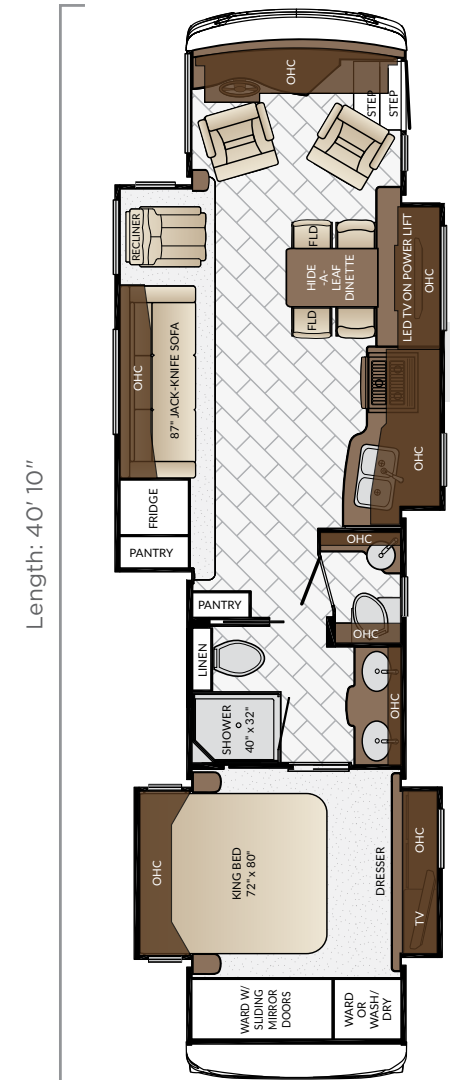
4037

|                     |            |
|---------------------|------------|
| Length              | 40'10"     |
| Width               | 101.5"     |
| App. Overall Height | 12'10"     |
| Interior Width      | 95.5"      |
| Interior Height     | 84"        |
| Grey Tank           | 65 gal.    |
| Sewage Tank         | 45 gal.    |
| Water Tank          | 105 gal.   |
| Propane Tank        | 32 gal.    |
| Furnace             | 54,000 btu |



4042

|                     |            |
|---------------------|------------|
| Length              | 40'10"     |
| Width               | 101.5"     |
| App. Overall Height | 12'10"     |
| Interior Width      | 95.5"      |
| Interior Height     | 84"        |
| Grey Tank           | 65 gal.    |
| Sewage Tank         | 45 gal.    |
| Water Tank          | 105 gal.   |
| Propane Tank        | 32 gal.    |
| Furnace             | 54,000 btu |



Length: 40' 10"



## 4044

|                     |            |
|---------------------|------------|
| Length              | 40'10"     |
| Width               | 101.5"     |
| App. Overall Height | 12'10"     |
| Interior Width      | 95.5"      |
| Interior Height     | 84"        |
| Grey Tank           | 65 gal.    |
| Sewage Tank         | 45 gal.    |
| Water Tank          | 105 gal.   |
| Propane Tank        | 32 gal.    |
| Furnace             | 54,000 btu |



Full-paint Masterpiece™ Finish | Seaspray Exterior

# quality CONSTRUCTION

Like a fine home, the 2017 Ventana LE is framed 16 inches on center and comes covered by a BriteTEK™ roof with walkable decking.

| FLOOR PLAN | ENGINE HP | AXLE RATIO | FUEL CAP. | WHEEL BASE | FRONT GAWR | REAR GAWR | TAG GAWR | GVWR      | GCWR      | APP. UVW  | APP. NCC |
|------------|-----------|------------|-----------|------------|------------|-----------|----------|-----------|-----------|-----------|----------|
| 3412       | 340       | 4.78       | 100 gal.  | 206        | 12000 lb.  | 20000 lb. | n/a      | 31000 lb. | 33000 lb. | 25700 lb. | 5300 lb. |
| 3436       | 340       | 4.78       | 100 gal.  | 206        | 12000 lb.  | 20000 lb. | n/a      | 31000 lb. | 33000 lb. | 25600 lb. | 5400 lb. |
| 3709       | 340       | 4.78       | 100 gal.  | 242        | 13300 lb.  | 20000 lb. | n/a      | 31000 lb. | 33000 lb. | 27500 lb. | 3500 lb. |
| 3724       | 340       | 4.78       | 100 gal.  | 242        | 13300 lb.  | 20000 lb. | n/a      | 31000 lb. | 33000 lb. | 26900 lb. | 4100 lb. |
| 4002       | 360       | 4.78       | 100 gal.  | 276        | 13300 lb.  | 24000 lb. | n/a      | 37300 lb. | 42300 lb. | 29200 lb. | 8100 lb. |
| 4037       | 360       | 4.78       | 100 gal.  | 276        | 13300 lb.  | 24000 lb. | n/a      | 37300 lb. | 42300 lb. | 29500 lb. | 7800 lb. |
| 4042       | 360       | 4.78       | 100 gal.  | 276        | 13300 lb.  | 24000 lb. | n/a      | 37300 lb. | 42300 lb. | 29100 lb. | 8200 lb. |
| 4044       | 360       | 4.78       | 100 gal.  | 276        | 13300 lb.  | 24000 lb. | n/a      | 37300 lb. | 42300 lb. | 29000 lb. | 8300 lb. |

The content in our literature depicts and describes products that are subject to change. For the most recent images and information, please visit [NewmarCorp.com](http://NewmarCorp.com).

Lengths, heights, widths and dry weights are approximate. Weight will vary based on optional equipment added to the above base weight.

**GAWR:** Gross Axle Weight Rating is the maximum permissible weight for an axle.

**GVWR:** Gross Vehicle Weight Rating is the maximum permissible weight for a fully loaded motor coach.

**GCWR:** Gross Combination Weight Rating is the value specified by the manufacturer of the vehicle as the maximum allowable loaded weight of this motor coach and any towed trailer or towed vehicle.

**UVW:** Unloaded Vehicle Weight is the weight of this motor coach as built at the factory with full fuel, engine oil and coolants. Does not include cargo, fresh water, propane gas or dealer-installed accessories.

**NCC:** Net Carrying Capacity is the maximum weight of all occupants, including the driver, personal belongings, food, fresh water, waste water, propane gas, tools, tongue weight of towed vehicle, dealer-installed accessories, etc., that can be carried by the motor coach.

\*Specifications supplied by the chassis manufacturer.

#### Ventana LE R-Values:

Roof R-Value = 19

Sidewall R-Value = 11

Floor R-Value = 16

Basement R-Value = 4



# FEATURES & OPTIONS

## EXTERIOR



### EXTERIOR FEATURES

Full-Paint Masterpiece Finish™ with Diamond Shield Protection on Front Cap

Convex Exterior Mirrors with Remote Control and Defrost

Entrance Door with Automatic Step

Assist Handle at Entrance Door

Hydraulic Leveling Jacks

Stainless Steel Exterior Trim Pieces on Front Cap and Grill Area

Mud Flaps

Rear Ladder

Rear Hitch for Towing Car

Undercoating

#### OPTIONS

Patio Hammock Package

### CONSTRUCTION FEATURES

BriteTEK™ Roof with Walkable Decking

Gelcoated Fiberglass Exterior Sidewalls, Front and Rear Caps

Aluminum-Frame Sidewalls & Roof Construction, 16" on Center

5/8" Foam Insulation Laminated in Sidewalls & Ceiling

#### OPTIONS

One Piece Molded Fiberglass Roof

Polar Pak R19 Batten Insulation in Roof

## WINDOWS, AWNINGS, & VENTS

One Piece Tinted Windshield

Frameless Single-Pane Tinted Safety-Glass Windows

Power Vent in Kitchen and Bathroom

Skylight Above Shower

Carefree® Travelr™ Power Side and Entrance Door Awning with Alumaguard

Slideout Awning Covers

### OPTIONS

Bunk Windows

Frameless Double Pane Tinted Safety Glass Windows

Fantastic Vent with Rain Sensor in Kitchen & Bathroom

## CHASSIS FEATURES

Freightliner® XCR Chassis with 340Hp Cummins® ISB Engine 34-37' Floorplans

Freightliner® XCR Chassis with 360Hp Cummins® ISB Engine 40' Floorplans

Chrome Wheel Simulators

Comfort Drive Steering System with Power Column and Adjustable Control

V-Ride Drive Axle Suspension

Cruise Control

Manual Tilt and Telescope Steering Wheel with VIP Smart Wheel

Recessed Fuel Fills with Crossover to Fill from Either Side

Anti-Lock Braking System

Chassis Battery Disconnect

## AIR CONDITIONING & HEATING

Two 13.5M Penguin™ Central Air Conditioners

Propane Furnace with Ducted Heat

Dash Heater and Air Conditioner

Wall Mounted Sensors for Heating and Air Conditioning

Driver/Passenger Overhead Dash Fans

### OPTIONS

Two 15M Penguin™ Heat Pump Air Conditioners

## ELECTRICAL FEATURES

6.0 kW Cummins® Onan® Diesel Quiet Series Generator

50 Amp Electrical Service with Flexible Cord and Automatic Transfer Switch

Four 12-Volt House Batteries on Pullout Tray

Battery Disconnect Switch for House Battery

1200 Watt Inverter

Emergency Engine Start Switch

Exterior Security Light on Doorside

Midship Side Turn Signals

LED Lights Recessed in Ceiling and Underneath Overhead Cabinets

Manually Operated Hold-To-Run Slideout Switch

12 Volt Auxiliary Receptacle on Dashboard

USB Charger At Dinette & Bedroom Night Stand

Engine Block Heater

Cable TV Connection

Lights in Exterior Storage Compartments

Interior Courtesy Lights

### OPTIONS

8.0 Kw Onan® Diesel Quiet Series Generator

2000 Watt Modified Sine Inverter with Four 6-Volt Volt Batteries

Automatic Generator Start on Low Battery or Temperature Setting

## PLUMBING & BATH FEATURES

Demand Water System

Sewage Holding-Tank Rinse

Water Heater Bypass System

Dometic® 321 China Bowl Stool or Macerator Stool\*

Systems Monitor Panel

Fiberglass Shower with Glass Door

Exterior Shower

Water Filter for Entire Unit

## INTERIOR FEATURES

Dash Panel Color Coordinated ABS

Interior Assist Handle at Main Entry Door

Power Stepwell Cover

Inlaid Six Panel Design Interior Passage Doors

Decorative Wall Art

Padded Vinyl Ceiling

Vinyl Tile Floor in Kitchen, Bathroom and Living Area

Carpeting in Bedroom and on Slideout Floors

MCD® Black Window Shades

MCD® Power Shades at Windshield and Manual Shades on Driver/ Passenger Side Windows

Quilted Bedspread with Bed Scarf and Accent Pillow

10 Bc Fire Extinguisher, Smoke Detector, Propane and Carbon Monoxide Detector

### OPTIONS

Bathroom Floor Extended in Bedroom Area

Luxury Plank Floor in Place of Vinyl Tile



## CABINETS & FURNITURE

Empire Maple Mitered Designer Glazed Cabinet Doors

Concealed Hinges on Cabinet Doors

Drawers with Full Extension Ball Bearing Guides

Fixed Pantry Shelves

Polished Solid Surface Countertop in Kitchen with Stainless Steel Sink and Sink Covers

Solid Surface Countertops in Bathroom and Bedroom

Flexsteel® Deluxe Leather Sofa and Driver/Passenger Seats

Smooth-Top Mattress

Lifts on Bed Top

Front Seats with 6 Way Power

Passenger Seat Work Station

Manual Foot Rest on Passenger Seat

### OPTIONS

Sienna Maple Mitered Designer Glazed Cabinet Doors

Astoria Maple Mitered Designer Glazed Cabinet Doors

Combination Desk with Buffet Dinette Table, 2 Fixed & Two Folding Chairs

Buffet Dinette

Flexsteel® Euro Booth Dinette & Two Folding Chairs

Off Door Side-Side Opening Hide-A-Bed with Air Mattress

Off Door Side Hide-A-Bed with Air Mattress

Off Door Side Hide-A-Bed in Place of L-Sofa

Off Door Side Power Extenda L Sofa

Sleep Number Deluxe® Square Air Mattress

Sleep Number Premier® Radius Corner Air Mattress

Door Side Fold and Tumble Sofa with Air Mattress

Door Side-Side Opening Hide-A-Bed with Air Mattress

Power Flip Up Sofa in Bed Base with Sleep Number® Air Mattress

Power Incline Retracting Bed Base, Sleep Number® Air Mattress

Power Incline Head of Bed with Sleep Number® Air Mattress

## APPLIANCES & ACCESSORIES

30" Over the Range Microwave

Recessed Three-Burner Range with Oven

Norcold® 10 Cu. Ft. Refrigerator with Black Panel Front

10 gal. Gas/Electric Water Heater with Direct-Spark Ignition

Prep for Two-Piece Washer/Dryer

Flush Gas Cooktop Cover of Matching Countertop Material

### OPTIONS

Norcold® 12 Cf. Four-Door Refrigerator with Icemaker

Frigidaire® 10 Cf. Refrigerator, 2000 Watt Inverter with Six 6-Volt Batteries and 22 gal. Propane Tank

Whirlpool® 19.7 Refrigerator, 2000 Watt Pure Sine Inverter & Six 6-Volt Batteries and 22 gal. Propane Tank

30" Convection Microwave Oven with Three Burner Cooktop

Air Horns

Whirlpool® Two Piece Stacked Washer & Dryer

Fireplace in Living Area\*

## AUDIO, VIDEO & ACCESSORIES

LED TV and DVD Player in Living and Bedroom Areas, TV Sizes Vary per Floorplan\*

Dash Radio/CD Player with Harman/JBL® 180 Watt Sound System and Subwoofer

Rearview Color Monitor System with Audio

Side View Cameras Displayed onto Rear View Monitor Screen

Winegard® Digital Crank Up TV Antenna

Satellite Prep on Roof

TV Jack and 110 Volt Recept in Door Side Exterior Storage Compartment

High Definition Component Wiring

Bluetooth Microphone for Sony Dash Radio

### OPTIONS

32" LED TV in Front Overhead

Winegard® Automatic Dome Satellite Dish

Sony® Surround Sound System with Subwoofer

Two LCD Flip Down LCD Monitor/DVD Player with Headphone\*

Blu-Ray Disc Player

Exterior Entertainment Center in Sidewall with Vizio 43" LED TV & Soundbar\*

Exterior Entertainment Center in Storage Compartment with Vizio 32" LED TV & Soundbar\*

Sirius XM® Satellite Radio with Antenna (Does not include monthly subscription)

\*Check with dealership on floor plan availability.

The content in our literature depicts and describes products that are subject to change. For the most recent images and information, please visit [NewmarCorp.com](http://NewmarCorp.com).

# THE NEWMAR *customer* EXPERIENCE

The Newmar Difference goes beyond our industry-leading motor coaches to deliver you with an unrivaled ownership experience.



## QUALITY FROM THE START

Every Newmar is crafted one at a time by folks who have spent an average of 13 years building them. And each coach we assemble must undergo more than 1,000 quality checks before ever leaving the Newmar factory.



## SEAMLESS SERVICE

Available 24/7, our service specialists ship in-stock parts to arrive the next day. And if a part is out of stock, we'll pull it from the production floor. It's all about getting you back out on the road A.S.A.P.



## EVERYTHING – ALL IN ONE PLACE

As a Newmar owner, you'll find dozens of resources specific to your coach through Newgle, an easy-to-use knowledge base that houses everything from user guides to technical support documents.



## WE HAVE YOUR BACK

Should you find yourself in need of roadside assistance, we'll send a mobile service technician out to assist you virtually anywhere in North America.



## FRIENDS FOR LIFE

Join Newmar and meet fellow owners through the Newmar Kountry Klub, a top social club for RV travelers for close to 30 years. Or, connect using the world's only social sharing website created for RVers, by RVers – GoNewmar.com.



## ROCK-SOLID WARRANTY COVERAGE

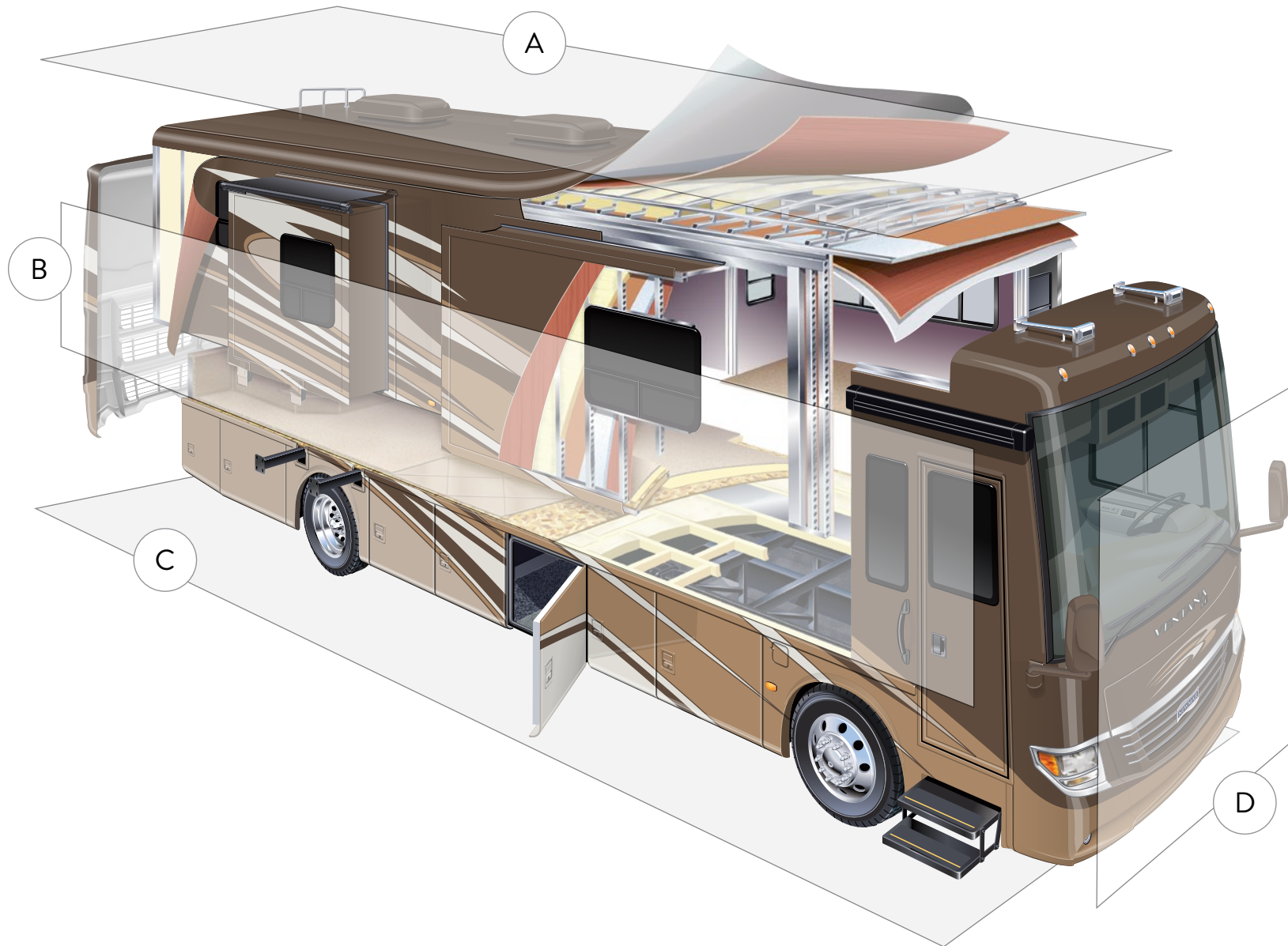
All models include a 1-year/unlimited mileage limited warranty and a 5-year, non-transferable structural warranty that covers your vehicle's superstructure in the event it fails to perform. *Ask your Newmar dealer for details.*



## WE'RE HERE TO HELP

Have a question? Need to file a claim? Our Warranty team is ready, willing and able to do whatever it takes to make things right, right away.





## A. ROOF

---

BriteTEK™ Roof with Walkable Deck  
 Batten Insulation  
 A/C Ducting  
 16" on Center Aluminum Rafter Framing  
 Kraft Paper Vapor Barrier  
 5/8" Bead Foam  
 3/16" Panel  
 Padded Vinyl Overlay

## B. SIDEWALL

---

Interior Wall Panel  
 5/8" Bead Foam  
 Kraft Paper Vapor Barrier  
 Batten Insulation  
 Composite One-Piece Gelcoat Exterior Wall  
 Aluminum Framing

## C. FLOOR

---

Carpet/Tile  
 Carpet Padding  
 5/8" Floor Decking  
 Batten Insulation  
 16" on Center Wood Framing  
 Polyethylene Moisture Barrier

## D. EXTERIOR

---

13.5M Penguin™ Central Air Conditioner  
 One-Piece Bonded Windshield  
 Frameless, Single-Pane, Tinted Safety-Glass Windows  
 Side-Hinged Baggage Doors

# OUR PARTNERS

*Where the Finest Names in Quality and Performance  
are Along for the Ride*

To ensure that you experience only the best in comfort, control and unsurpassed convenience in our incomparable family of Luxury Coaches, Newmar partners with the most prestigious names in mobile lifestyle, entertainment and technology. These brands are leaders in their fields and legends in providing customers with new, unsurpassed levels of quality and reliability. Best-in-class performance from names you can trust. At Newmar, that's our difference. And our promise.

## *Partners*

---

### **Freightliner® Custom Chassis**

Freightliner Custom Chassis are renowned for their exceptional ride, responsive handling characteristics and extraordinary reliability.

### **Sony®**

Sony brings the best in entertainment technology to your home on wheels through cutting-edge 4K and LED TVs, Blu-ray players and more.

### **Spartan® Chassis**

Spartan Chassis consistently deliver superior performance, exceptional safety ratings and industry-leading technology.







## THE MILLER WAY

*Industry-Leading Quality,  
From Our Family to Yours*

For the Miller family, RVs are what we build because RVing is what we love. To us, the RV lifestyle is more than our business – it's our passion. Our customers choose Newmar time and time again because they trust in us, our products and our people.

I myself am proud to own a Dutch Star designed, assembled and backed by artisans, engineers and service specialists who represent the best our industry has to offer. Men and women who have spent an average of 13 years as members of the Newmar family. Without them, The Newmar Difference simply wouldn't exist.

Matt Miller

*Newmar President, lifelong motor coach enthusiast*



WHEN YOU KNOW THE *difference*



NEWMAR CORPORATION | 355 N DELAWARE ST | PO BOX 30 | NAPPANEE, IN 46550-0030 | 574-773-7791 | FAX 574-773-2895

[www.newmarcorp.com](http://www.newmarcorp.com)