

TUSCANY[®]
BY THOR MOTOR COACH

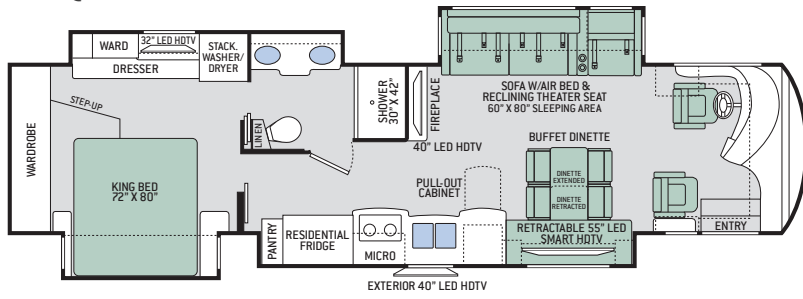


 **THOR**[®]
MOTOR COACH

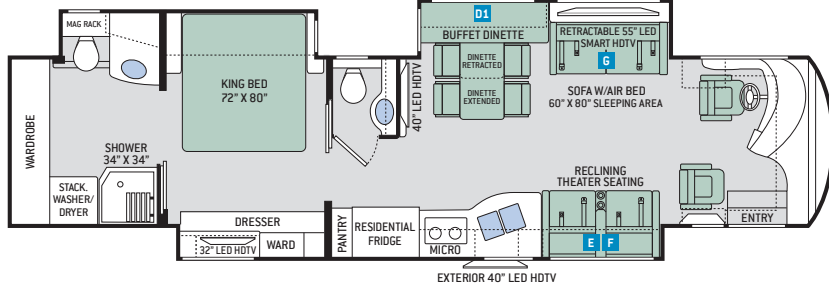
Made to fit.

Floor Plans

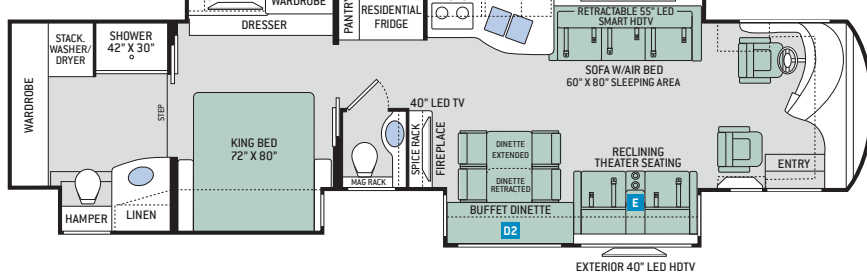
38SQ



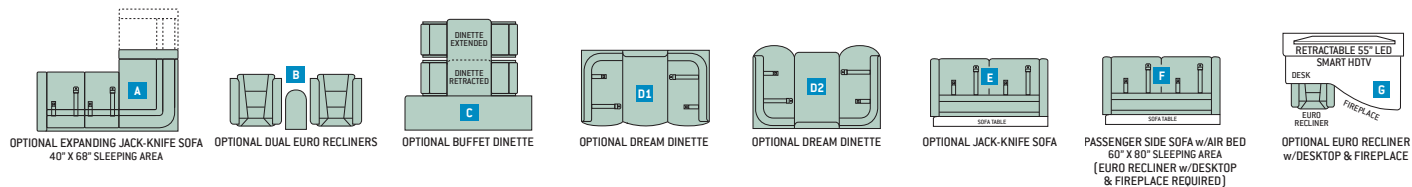
40DX



42GX



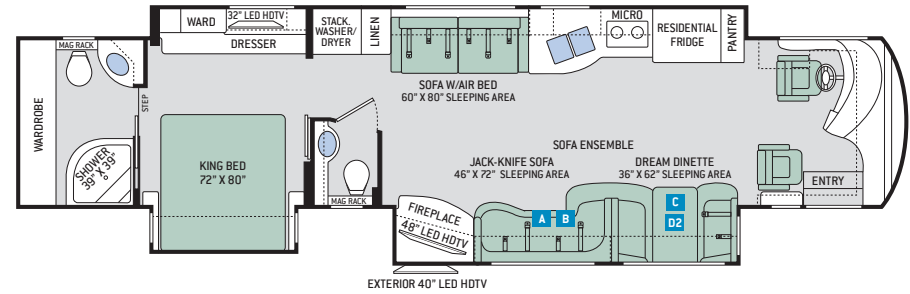
OPTIONS



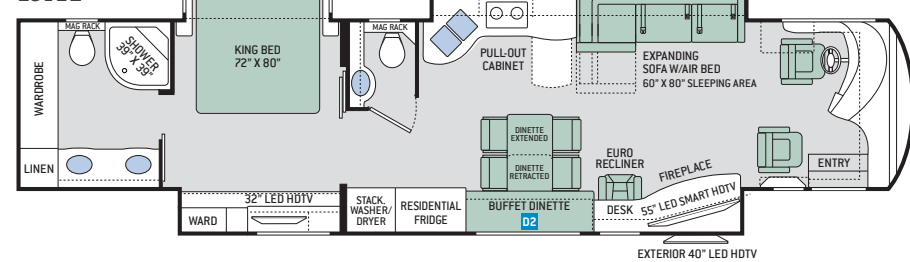
Specifications

	38SQ	40DX	42GX	44MT	45AT
Chassis	Freightliner XC-R	Freightliner XC-R	Freightliner XC-R	Freightliner XC-R	Freightliner XC-R
Gross Vehicle (GVWR)	38,600	38,600	45,660	45,660	45,660
Gross Combined (GCWR)	48,600	48,600	60,660	60,660	60,660
Wheel Base	252"	266"	266"	287"	287"
Exterior Length	39'-11"	41'-1"	43'-1"	44'-10"	44'-10"
Exterior Height (w/AC)	12'-9"	12'-9"	12'-9"	12'-9"	12'-9"
Exterior Width (w/o mirrors)	101"	101"	101"	101"	101"
Interior Height (living area)	85"	85"	85"	85"	85"
Awning Size	16'-5"	16'-5"	12' & 12'	16'-5"	16'-5"
Fuel (gal)	150	150	150	150	150
Fresh/Waste/Gray Water (gal)	91 / 51 / 51	91 / 51 / 51	91 / 51 / 51	91 / 51 / 51	91 / 51 / 51
Water Heater (gal)	On Demand	On Demand	On Demand	On Demand	On Demand
Furnace (BTUs)	65,000	65,000	65,000	65,000	65,000
Exterior Storage Capacity (cu. ft.)	190	215	215	260	260

44MT



45AT



Interior Decor



GOLD COAST



MOONSTONE



VERONA



HIGH-GLOSS GLAZED
MILAN CHERRY



HIGH-GLOSS GLAZED
PACIFIC CHERRY



HIGH-GLOSS GLAZED
RESORT CHERRY



POLISHED PORCELAIN
TILE FLOORING

Exterior Graphics



MOSAIC FULL-BODY PAINT



OASIS FULL-BODY PAINT



REFLECTION FULL-BODY PAINT



SERENITY FULL-BODY PAINT



SOLSTICE FULL-BODY PAINT

Features

CONSTRUCTION & EXTERIOR

- Freightliner® XC-R Raised Rail Chassis
- Cummins® ISL 8.9L Engine with 450HP & 1,250 lb.-ft. Torque
- 6-Speed Allison MH-3000 Automatic Transmission
- ZF® Independent Front Suspension with 60" Wheel Cut
- Full Air Front Disc & Rear Drum Anti-Lock Brakes
- 2-Stage Jacobs® Brake (42GX, 44MT & 45AT)
- Sachs® Shock Absorbers
- Exhaust Brake (38SQ & 40DX)
- 150-gallon Fuel Tank with Dual Fills
- One-Piece Fiberglass Front & Rear Caps
- Domed Fiberglass Roof
- One-Piece Tinted Windshield
- Invisible Front Paint Protection
- Full-Body Paint Package with Gel-Coat Sidewalls
- Automatic Leveling Jacks with Touchpad Controls
- Side-Hinged Locking Compartment Doors with Electronic Locks
- Full Basement Pass-Through Storage
- Easy Slide Storage Tray
- Power Entry & Patio Awnings with Integrated LED Lighting
- 2nd Power Patio Awning (42GX)
- Slideout Topper Awnings with Aluminum Covers
- Frameless Dual Pane Windows
- Roof Ladder
- Two (2) Patio Lights
- Outside Shower
- 10,000-lb. Trailer Hitch with 7-pin Round Connector (38SQ & 40DX)
- 15,000-lb. Trailer Hitch with 7-pin Round Connector (42GX, 44MT & 45AT)

AUTOMOTIVE & COCKPIT

- 10" Touchscreen AM/FM Dash Radio with Bluetooth®, Rand McNally® RV GPS Navigation, CD/DVD Player & Back-Up Monitor
- Chrome Heated/Power Mirrors w/Integrated Side Cameras

- Push Button Start
- Primera™ by Ultrafabrics® Reclining/Swivel Captain's Chairs with 6-Way Power Adjustment (Passenger Seat has Electric Footrest)
- Driver & Passenger Overhead Storage Cabinetry
- VIP Tilt/Telescoping Smart Wheel
- Adjustable Brake & Accelerator Pedals
- Cruise Control
- Air Horns
- Fog Lights
- Power Solar & Privacy Shades on Windshield
- Manual Solar & Privacy Shades on Side Windows
- Electric Step Cover
- 295/80R 22.5" Michelin® Radial Tires with Aluminum Wheels
- Keyless Entry System & Compartment Door Locks

INTERIOR

- Polished Porcelain Tile Throughout
- Ceiling Ducted Whisper Air™ Central Cooling System
- LED Lighting
- Decorative Ceiling Treatment with Mood Lighting
- High-Gloss Glazed Cabinetry with Raised Panel Hardwood Cabinet Doors & Nickel Finish Hardware
- Window Solar & Privacy Shades
- Electric Fireplace with Remote Control (38SQ, 42GX, 44MT & 45AT)
- Primera™ by Ultrafabrics® Sofa with Air Bed (40DX, 42GX & 44MT)
- Primera™ by Ultrafabrics® Sofa & Theater Seat with Footrest (38SQ)
- Primera™ by Ultrafabrics® Reclining Theater Seating with Footrests (40DX & 42GX)
- Primera™ by Ultrafabrics® Euro Recliner (45AT)
- Primera™ by Ultrafabrics® Ensemble with Sofa & Dream Dinette® Booth (44MT)

INTERIOR OPTIONS

- Primera™ by Ultrafabrics® Expanding L-Shaped Sofa with Air Bed (OPT 44MT / STD 45AT)

- Primera™ by Ultrafabrics® Jack-Knife Sofa (40DX & 42GX)
- Primera™ by Ultrafabrics® Dual Euro Recliners with End Table (44MT)
- Buffet Dinette with Four (4) Chairs – Includes Two (2) Folding (OPT 44MT / STD 38SQ, 40DX, 42GX & 45AT)
- Primera™ by Ultrafabrics® Dream Dinette® Booth (40DX, 42GX, 44MT & 45AT)

KITCHEN

- 20 cu. ft. Stainless Steel Residential French Door Refrigerator with In-Door Ice & Water Dispenser
- Electric Induction Cooktop
- 1.9 cu. ft. Stainless Steel Over-the-Range Convection Microwave Oven
- Residential Dishwasher Drawer-Style
- Chrome Pull-Out Wire Basket (44MT & 45AT)
- Solid Surface Countertops, Range Cover & Sink Covers
- Large Double Bowl Stainless Steel Sink & Single Handle Faucet w/Pull-Down Sprayer
- Decorative Tile Backsplash
- 12-volt Attic Fan with Cover & Remote Control

BEDROOM & BATHROOM

- Denver Mattress® Pillowtop King Size Bed
- Bedsprad with Throw Pillows
- Ceiling Fan in Bedroom
- USB Charging Ports in Nightstands
- Porcelain Toilet
- Oversized Full Height Shower with Glass Door
- 12-volt Attic Fan with Cover in Bathroom

ENTERTAINMENT

- 40" LED HDTV & 55" LED Smart HDTV in Living Area (38SQ, 40DX & 42GX)
- 48" LED Smart HDTV in Living Area (44MT)
- 55" LED Smart HDTV in Living Area (45AT)
- JBL® Sound Bar with Bluetooth®
- Sony® Blu-Ray DVD Player in Living Area

- 32" LED HDTV in Bedroom
- Exterior 40" LED HDTV
- Cable TV & HDMI Video Ready
- Winegard™ TRAV'LER HD Satellite Dish (HD-capable with DirecTV in US. Shaw Direct in Canada)

ENTERTAINMENT OPTIONS

- 32" LED HDTV in Cockpit Overhead (38SQ, 44MT & 45AT)

ELECTRICAL & PLUMBING

- Cummins Onan® RV QD 10000 Diesel Generator on Power Slideout
- Automatic Generator Start
- 50-amp Shoreline Power Cord & 12-volt Retractable Cord Reel
- 2000-watt Pure Sine Inverter/100-amp Converter
- Triple 15,000 BTU Low-Profile Ducted Air Conditioners with Three (3) Heat Pumps
- Energy Management System
- Firefly® Multiplex Wiring Control System
- Pre-Wired for Solar Charging
- Emergency Start Switch
- Four (4) Auxiliary House Batteries
- Battery Disconnect Switch
- Exterior GFCI Recept
- Enclosed & Heated Holding Tanks
- E-Z Flow Water Panel with Whole-House Water Filtration
- Black Tank Flush System
- Systems Control Center
- Stackable Washer & Dryer
- Central Vacuum System with Toe-Kick Dustpan
- Aqua-Hot® 400D Hydronic Furnace & Water Heating System



IMPORTANT—PLEASE READ: This brochure reflects product design, fabrication, material, components and specifications at the date of printing, which date is disclosed below. Please visit us online at ThorMotorCoach.com or consult with your selling dealership for the latest in standards, options, specification and technical information. Photographs in the brochure may depict optional equipment or may only be available in certain floor plans. Components, appliances and the chassis may have been manufactured in a calendar year before the vehicle's designated model year. All capacities are approximate. The actual length of the vehicle may differ from that indicated in the brochure due to variances in the manufacturing processes and/or installed components. All dry weights are based on standard model features and do not include optional features or equipment. Component part and appliance manufacturers issue limited warranties covering portions of the vehicle not covered under the limited warranty we issue. Copyright Thor Motor Coach, Inc. © MY 04/15/16

YOUR LOCAL THOR MOTOR COACH DEALER



Made to fit.

thormotorcoach.com/tuscany/tag

P.O. Box 1486, Elkhart, IN 46515 Sales Department: 800.860.5658 Customer Service: 877.855.2867

