

# HIDEOUT

EDITION  
EASTERN

TRAVEL TRAILERS | FIFTH WHEELS | SINGLE AXLES



QUALITY CIRCLE AWARD WINNER

RIGHT, FEATURES. RIGHT, PRICE.  
**RIGHT NOW**

LUXURY COMES STANDARD | [WWW.KEYSTONERV.COM/HIDEOUT](http://WWW.KEYSTONERV.COM/HIDEOUT)



Keystone RV  
Company



When Cole Davis founded Keystone RV in 1998 his vision was clear: Build a quality RV loaded with features priced thousands less than other RVs on the market. To accomplish his goal, Cole would recruit and build a strong team, focus on keeping overhead low, and empower the people closest to the customer to make decisions. Within a few short months after opening the doors, Keystone produced its very first camper. Delivering big on quality, features and value.

As customers appetite skyrocketed, new Keystone models were added to satisfy growing customer demand. Along with this tremendous growth came the need for expanded production. To meet this need, more manufacturing plants were built and staffed. By the beginning of 2000, Keystone was leading the industry in fifth wheel and trailer sales. Today, Keystone RV Company has grown to encompass over 1 million square feet of manufacturing space with facilities in Goshen, Indiana and Pendleton, Oregon. While Keystone is no longer the small "start up" we once were, our mission has remained true to Cole's vision—"Do the job right and make sure we deliver a quality product every time."



**Keystone RV  
Company**



HIDEOUT

RIGHT, FEATURES. RIGHT, PRICE.

**RIGHT NOW**

*HIDEOUT*

*Our Story*

**RIGHT NOW** is the right time for anyone to enjoy camping in a Keystone Hideout Travel Trailer or Fifth Wheel.

With a wide range of floorplans that appeal to any size family, Hideout offers the perfect combination of luxury, features and camping convenience—all at the **RIGHT PRICE**.

Aside from having eye catching exterior appeal and beautiful interior decors, Hideout also provides award winning quality and exactly the **RIGHT FEATURES** to make your camping experience comfortable, convenient and trouble free.

You will find that Keystone Hideout truly is the best value in its category—with the **RIGHT FEATURES** and the **RIGHT PRICE** all **RIGHT NOW**.

## HIDEOUT LUXURY TRAVEL TRAILERS

*With many new upscale luxury features inside and out the Hideout is more than just a travel trailer. Packed full of fun features the Hideout is the perfect choice for your family.*

## HIDEOUT LHS SERIES TRAVEL TRAILERS

*When it comes to value, comfort and endless standard features Hideout has you covered. Enjoy high-end value without the high-end price tag with the Hideout LHS Series!*

## HIDEOUT LUXURY FIFTH WHEELS

*The best value in the fifth wheel market, Hideout Luxury fifth wheels offer fully featured, exciting interior & exterior appeal and top selling floorplans at the best price in the industry.*

**INTERIORS & FEATURES**  
PGS. 4-7

**FLOORPLANS & SPECIFICATIONS:**  
PGS. 8-13

**STANDARDS & OPTIONS:**  
PGS. 14-15



276RLS

SHOWN IN MAPLECREST DECOR



LUXURY COMES STANDARD \ COMFORT AND LUXURY FOR THE WHOLE FAMILY



CENTRAL VACUUM SYSTEM



FULL EXTENSION BALL BEARING ROLLER GLIDES



XL EXTENDED GRAB HANDLE



RELAX...THERE'S A HIDEOUT FLOORPLAN THAT WILL MEET ALL OF YOUR FAMILIES NEEDS. WITH A UNIQUE LINEUP OF FLOORPLANS THAT ARE LOADED WITH STANDARD FEATURES, HIDEOUT'S RESIDENTIAL STYLE INTERIOR IS YOUR HOME AWAY FROM HOME.

**STAY IN TOUCH**  
KEYSTONERV.COM/HIDEOUT







**CENTRAL CONTROL PANEL**



**LED LIGHTED POWER AWNING**



**OVERSIZED BAGGAGE DOORS**

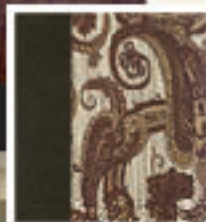
Hideout is always just a touch away. You'll find 360 virtual tours, location of your nearest dealer, photos, videos and all of the latest information about Hideout on our easy to navigate website.



**LUXURY COMES STANDARD \ THE STANDARD IN ULTIMATE VALUE**



**HIDEOUT LEADS THE INDUSTRY IN STYLISH COMFORT & CUSTOMER CONVENIENCE ALL WITH SUPERIOR QUALITY AND RELIABILITY. LOADED WITH VALUE & TONS OF STANDARD FEATURES, YOU ARE SURE TO HAVE A FUN FILLED WEEKEND WITH YOUR FRIENDS & FAMILY.**





32BHTS

SHOWN IN SILVER BIRCH DECOR



LUXURY COMES STANDARD \ COMFORT AND LUXURY FOR THE WHOLE FAMILY



ENJOY UPGRADED FEATURES WITH A FULL FEATURED INTERIOR KITCHEN WITH RANGE, LARGE OVEN, 7 CU. FT. REFRIGERATOR & PLENTY OF STORAGE, FOR UNCOMPROMISED FAMILY CONVENIENCE. ALSO, BRING THE FUN OUTDOORS WITH MODELS THAT HAVE CONVENIENT OUTDOOR KITCHENS.

12 VOLT  
CHARGING STATIONBLUETOOTH  
DVD/CD/MP3 STEREO

LED LIGHTS

POWER TONGUE  
JACK



- |   |   |  |
|---|---|--|
| 1 Continuous Steel I-Beam Powder Coated Frame | 9 Lighted Electric Color Matched Awning     | 17 Radius Skirting   |
| 2 Walkable Crowned Roof                       | 10 Residential Batten Insulation Throughout | 18 Easy Lube Axles   |
| 3 Hurricane Strap Reinforced Structure        | 11 Dual Battery Storage Tray                | 19 0.24 Aluminum Baked Enamel Siding   |
| 4 Oversized Pass Through Storage              | 12 XL Entry Assist Handle                   | 20 Black Framed, Tinted Safety Glass Windows   |
| 5 Diamond Plate Front Protector               | 13 5/8" Seamless Floor Decking              | 21 Rain Gutter with Extended Down Spouts   |
| 6 One Piece TPO Roof                          | 14 E-Coat Corrosion Prevention Wheels       | 22 Fender Skirts   |
| 7 3/8" Roof Decking                           | 15 Four Stage Slide Room Seals              | 23 13,500 BTU Ducted Air Conditioner (Opt. 15K)  |
| 8 Dual 30 Lb. LP Bottles                      | 16 Easy Lift Steps                          | 24 Bumper Sewer Hose Storage   |
|   |   | 25 Exterior TV Mount   |
|   |   | 26 Industry Top Performing Stabilizer Jacks<br>(Fastest Extending/Retracting, Trouble Free Stabilizer on the Market) |

ALL OF YOUR  
OUTDOOR KITCHEN  
NEEDS ARE CLOSE  
AT HAND

OUTDOOR KITCHEN

CAMP KITCHEN

OUTDOOR AND CAMP  
KITCHEN FEATURES  
ARE NOT AVAILABLE  
ON ALL MODELS



**SCAN HERE**  
TO TAKE A 360° INTERIOR VIRTUAL  
TOUR OF THE HIDEOUT TRAVEL TRAILER.  
MORE VIRTUAL TOURS ARE AVAILABLE  
AT [KEYSTONERV.COM](http://KEYSTONERV.COM)



**LUXURY**  
COMES STANDARD



## LUXURY TRAVEL TRAILER FLOORPLANS

WWW.KEYSTONERV.COM/HIDEOUT



WEIGHT: 6078 LENGTH: 29' 8"

**25RKS**

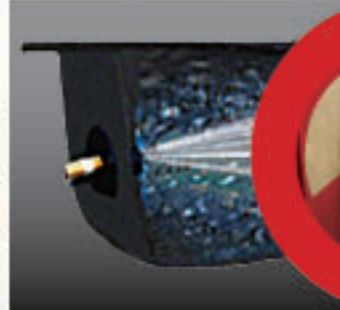
WEIGHT: 6575 LENGTH: 31' 6"

**27DBS**

WEIGHT: 6596 LENGTH: 31' 0"

**26RLS**

WEIGHT: 6817 LENGTH: 32' 3"

**28BHS****PUSH BACK RECLINERS****HEATED & ENCLOSED UNDERBELLY****CORRECT TRACK ALIGNMENT SYSTEM****BLACK TANK FLUSH**





WEIGHT: 7031 LENGTH: 33' 0" **29BKS**



WEIGHT: 7572 LENGTH: 33' 3" **30RKDS**



WEIGHT: 7475 LENGTH: 33' 2" **30FKDS**

## STAY IN TOUCH



Hideout is always just a touch away. You'll find 360 virtual tours, location of your nearest dealer, photos, videos and all of the latest information about Hideout on our easy to navigate website. Everything you need can be accessed anytime, day or night, from home or on the road. You can also find us on the Keystone RV facebook.



USH



**E-COATED WHEELS WITH E-Z LUBE AXLES**



**OUTDOOR KITCHEN**

MODEL	SHIPPING WEIGHT	CARRYING CAPACITY	HIGH	LENGTH*	HEIGHT	FRESH WATER	WASTE WATER	GRAY WATER	LP/L
25RKS	6078	1622	700	29' 8"	11' 0"	45	39	69	60
26RLS	6586	1244	840	31' 0"	11' 0"	45	39	39	60
27DBS	6575	1290	865	31' 6"	11' 0"	45	30	39	60
28BHS	6817	2878	895	32' 3"	11' 0"	45	39	69	60
29BKS	7031	2524	755	33' 0"	11' 0"	45	38	38	60
30FKDS	7475	2360	1035	33' 2"	11' 2"	45	38	76	60
30RKDS	7572	2183	955	33' 3"	11' 2"	45	38	76	60



# LUXURY TRAVEL TRAILER FLOORPLANS

WWW.KEYSTONERV.COM/HIDEOUT



WEIGHT: 7482 LENGTH: 33' 7" **30RLDS**



WEIGHT: 7867 LENGTH: 35' 8" **31RBDS**



WEIGHT: 8180 LENGTH: 35' 0" **NEW 31FBDS**



WEIGHT: 8447 LENGTH: 36' 4" **31RBTS**



WEIGHT: 8890 LENGTH: 37' 11" **32BHTS**

MODEL	SHIPPING WEIGHT	CARRYING CAPACITY	ITCH	LENGTH*	HEIGHT	FRESH WATER	WASTE WATER	GRAY WATER	MPG
30RLDS	7482	2363	1045	33' 7"	11' 2"	45	38	38	60
31FBDS	8180	1515	895	35' 0"	11' 2"	45	38	70	60
31RBDS	7867	1853	920	35' 8"	11' 2"	45	38	38	60
31RBTS	8447	1323	970	36' 4"	11' 2"	45	38	38	60
32BHTS	8890	2230	1020	37' 11"	11' 2"	45	38	90	60
38RHDS	8463	1547	1210	39' 11"	11' 2"	45	38	38	60
38FDDS	8394	1605	1205	39' 11"	11' 2"	45	38	38	60
38FKTS	9275	1725	1200	39' 11"	11' 4"	45	38	70	60
38FOTS	9585	1775	1200	39' 11"	11' 4"	45	70	70	60



# YOUR HOME AWAY FROM HOME

## 38BHDS

Front bunkhouse with rear bedroom

We've built our bunkroom with plenty of storage for all the clothes and toys. Best of all, everyone has their own space when it's time to settle in for the night.

## 38FDDS

Front living room with rear bedroom

Hideout's family friendly living room comes packed to meet the needs of any sized family. Your family is sure to enjoy the increased spaciousness of our front living room.

## 38FKTS

Front kitchen with rear bedroom

Spacious front kitchen with additional seating for guests. Transitional bunkroom for sleeping or office space.

## 38FQDS

Front bedroom with 2 bedrooms and 1.5 baths

Hideout's bedrooms provide spacious sleeping quarters and loads of storage space for a great night's sleep.



WEIGHT: 8463 LENGTH: 39' 11"

**NEW 38BHDS**



WEIGHT: 8394 LENGTH: 39' 11"

**NEW 38FDDS**



WEIGHT: 9275 LENGTH: 39' 11"

**NEW 38FKTS**



WEIGHT: 9585 LENGTH: 39' 11"

**NEW 38FQDS**



## LUXURY FIFTH WHEEL FLOORPLANS

WWW.KEYSTONERV.COM/HIDEOUT

WEIGHT: 7510 LENGTH: 30' 4" **NEW** 276RLS

WEIGHT: 8183 LENGTH: 31' 1" 299RLDS

WEIGHT: 8610 LENGTH: 34' 11" **NEW** 295BHS

WEIGHT: 9139 LENGTH: 35' 6" 308BHDS



WEIGHT: 9087 LENGTH: 34' 11" 298BHDS

WEIGHT: 9450 LENGTH: 36' 8" **NEW** 315RDTs

Combining focused design and unique product specifications, Max Turn Technology is the leader in optimum turn radius:

Also, Hideout is equipped with a heavy duty extended hitch. Combined - Max Turn Technology makes turning and maneuvering a breeze.



MODEL	SHIPPING WEIGHT	CARRYING CAPACITY	HITCH	LENGTH*	HEIGHT	FRESH WATER	WASTE WATER	GRAY WATER	LPG
276RLS	7510	2790	1440	30' 4"	11' 9"	45	39	69	60
295BHS	8610	2590	1680	34' 11"	11' 9"	45	39	78	60
298BHDS	9087	2413	1850	34' 11"	11' 9"	45	39	81	60
299RLDS	8183	2317	1485	31' 1"	11' 9"	45	38	38	60
308BHDS	9139	2561	1845	35' 6"	11' 9"	45	70	39	60
315RDTs	9450	2405	1695	36' 8"	11' 9"	45	39	78	60

DISCLAIMER: Product information is as accurate as possible as of the date of publication of this brochure. All features, floor plans, and specifications in this brochure are subject to change without notice. Please also consult Keystone's web site at [www.keystonerv.com](http://www.keystonerv.com) for more current product information and specifications. Tow Vehicle Disclaimer. CAUTION: Owners of Keystone recreational vehicles are solely responsible for the selection and proper use of tow vehicles. All customers should consult with a motor vehicle manufacturer or their dealer concerning the purchase and use of suitable tow vehicles for Keystone products. Keystone disclaims any liability or damages suffered as a result of the selection, operation, use or misuse of a tow vehicle. KEYSTONE'S LIMITED WARRANTY DOES NOT COVER DAMAGE TO THE RECREATIONAL VEHICLE OR THE TOW VEHICLE AS A RESULT OF THE SELECTION, OPERATION, USE OR MISUSE OF THE TOW VEHICLE. \*Length is defined as the distance from the centerline of hitch pin/coupler to rear bumper of trailer. 11/15



# LHS TRAVEL TRAILER FLOORPLANS

LIGHT HIDEOUT SERIES

## NEW LHS SINGLE AXLE



**175LHS**



**NEW 177LHS**



**178LHS**



**185LHS**



WEIGHT: 4530 LENGTH: 25' 4" **NEW 212LHS**



WEIGHT: 5605 LENGTH: 27' 8" **NEW 232LHS**



WEIGHT: 5705 LENGTH: 28' 5" **NEW 242LHS**



WEIGHT: 5130 LENGTH: 29' 3" **NEW 262LHS**



WEIGHT: 5982 LENGTH: 30' 0" **NEW 272LHS**

\*\* SUBTRACT 2" FOR BK. BTU A/C

MODEL	SHIPPING WEIGHT	CARRYING CAPACITY	HEIGHT	LENGTH*	HEIGHT	FRESH WATER	WASTE WATER	GRAY WATER	LPG
175LHS	3305	1155	450	21' 0"	11' 6"	27	27	27	20
177LHS	3230	1070	450	21' 5"	11' 6"	27	30	30	20
178LHS	3275	1065	340	21' 5"	11' 6"	27	27	32	20
185LHS	3380	1015	395	21' 10"	11' 7"	27	27	27	20
212LHS	4530	2670	480	25' 4"	10' 3"	45	30	30	40
232LHS	5605	2015	660	27' 0"	11' 3"	45	30	30	40
242LHS	5705	1920	625	28' 5"	11' 3"	45	30	30	40
262LHS	5130	2415	545	29' 3"	10' 3"	45	30	30	40
272LHS	5982	1790	775	30' 0"	11' 3"	45	30	30	40









MAPLECREST DECOR



CEDAR DECOR



SILVER BIRCH DECOR



Our decors form the foundation for Hideouts carefully coordinated interiors. Modern upholstery, drapery, fabrics, hardware, fashionable window treatments, walls & countertops in the latest colors and materials.

RIGHT FEATURES. RIGHT PRICE.  
**RIGHT NOW**  
**HIDEOUT**



CONNECT WITH KEYSTONE RV AND STAY UP TO DATE WITH PRODUCT NEWS AND INFORMATION

VISIT OUR WEBSITE TO VIEW INTERIOR PHOTOS, 360 VIRTUAL TOURS AND MUCH MORE.





**HIDEOUT LUXURY**  
TRAVEL TRAILERS

**HIDEOUT LUXURY**  
FIFTH WHEELS

**HIDEOUT LHS SERIES**  
TRAVEL TRAILERS



HIDEOUT BRANDS ARE A PROUD RECIPIENT OF THE  
DEALER SATISFACTION QUALITY CIRCLE AWARD

*RIGHT FEATURES. RIGHT PRICE. RIGHT NOW.* [WWW.KEYSTONERV.COM/HIDEOUT](http://WWW.KEYSTONERV.COM/HIDEOUT)

## **BUY LOCALLY**

PURCHASING YOUR RV LOCALLY

It's up to you where you purchase your new Hideout, but may we suggest your local dealer? Not only does it help your local economy and provide jobs, but it will also give you an opportunity to develop a service relationship with someone that will come to know you and your coach. Congratulations on finding the best built, best equipped and best value in the industry. Happy travels!

YOUR LOCAL DEALER IS:



MAY 2016



**Keystone RV**  
Company

[WWW.KEYSTONERV.COM](http://WWW.KEYSTONERV.COM)  
574.535.2100 • 2642 HACKBERRY DRIVE  
P.O. BOX 2000 • GOSHEN, IN 46527



Go RVing.



# HIDEOUT

EDITION  
WESTERN

TRAVEL TRAILERS | FIFTH WHEELS | SINGLE AXLES



RIGHT FEATURES. RIGHT PRICE.  
**RIGHT NOW**



LUXURY COMES STANDARD | [WWW.KEYSTONERV.COM/HIDEOUT](http://WWW.KEYSTONERV.COM/HIDEOUT)

QUALITY CIRCLE AWARD WINNER







When Cole Davis founded Keystone RV in 1996 his vision was clear: Build a quality RV loaded with features priced thousands less than other RVs on the market. To accomplish his goal, Cole would recruit and build a strong team, focus on keeping overhead low, and empower the people closest to the customer to make decisions. Within a few short months after opening the doors, Keystone produced its very first camper. Delivering big on quality, features and value.

As customers appetite skyrocketed, new Keystone models were added to satisfy growing customer demand. Along with this tremendous growth came the need for expanded production. To meet this need, more manufacturing plants were built and staffed. By the beginning of 2000, Keystone was leading the industry in fifth wheel and trailer sales. Today, Keystone RV Company has grown to encompass over 1 million square feet of manufacturing space with facilities in Goshen, Indiana and Pendleton, Oregon. While Keystone is no longer the small "start up" we once were, our mission has remained true to Cole's vision—"Do the job right and make sure we deliver a quality product every time."



**Keystone RV  
Company**



# EDITION WESTERN

In 2006, Keystone Hideout made a strategic move that today benefits Hideout customers. Experiencing “phenomenal success” in the aluminum-skinned travel trailer market, the Hideout brand added production capabilities in Pendleton Oregon in addition to its existing production capabilities in Goshen, Indiana.

Oregon production gives West Coast buyers an extreme price advantage over products produced in Indiana due to decreased freight costs. The Pendleton plant also enables the Hideout team to offer a trailer that is “Built in the west for the west”

What do we mean by “Built in the west for the west”? The Western Edition Hideout is geared to the specific needs of the west, where camping is done year round and primarily without the luxury of full hook ups to sewer, water, and electricity regularly found in campgrounds in the Midwest and the east. The Western Edition Hideout models are generally, smaller, lighter, and carry more robust features such as added insulation, larger holding tank capacities, larger propane capacity, more interior and exterior storage, and are currently pre-wired for solar, and satellite. We hope that you enjoy our affordable west coast floor plans, added features, and ease of towability with the Western Edition Hideout.



## HIDEOUT LUXURY TRAVEL TRAILERS

*With many new upscale luxury features inside and out the Hideout is more than just a travel trailer. Packed full of fun features the Hideout is the perfect choice for your family.*

## HIDEOUT LHS SERIES TRAVEL TRAILERS

*When it comes to value, comfort and endless standard features Hideout has you covered. Enjoy high-end value without the high-end price tag with the Hideout LHS Single Axles!*

## HIDEOUT LUXURY FIFTH WHEELS

*The best value in the fifth wheel market, Hideout Luxury fifth wheels offer fully featured, exciting interior & exterior appeal and top selling floorplans at the best price in the industry.*

**INTERIORS & FEATURES**  
PGS. 4-7

**FLOORPLANS & SPECIFICATIONS:**  
PGS. 8-13

**STANDARDS & OPTIONS:**  
PGS. 14-15



**27RBWE**

SHOWN IN MAPLECREST DECOR



LUXURY COMES STANDARD \ COMFORT AND LUXURY FOR THE WHOLE FAMILY

**CENTRAL VACUUM SYSTEM****FULL EXTENSION BALL BEARING ROLLER GLIDES****XL EXTENDED GRAB HANDLE****23RKSWE**

SHOWN IN MAPLECREST DECOR



RELAX...THERE'S A HIDEOUT FLOORPLAN THAT WILL MEET ALL OF YOUR FAMILIES NEEDS. WITH A UNIQUE LINEUP OF FLOORPLANS THAT ARE LOADED WITH STANDARD FEATURES, HIDEOUT'S RESIDENTIAL STYLE INTERIOR IS YOUR HOME AWAY FROM HOME.

**STAY IN TOUCH**

KEYSTONERV.COM/HIDEOUT







LP QUICK DISCONNECT FOR BBQ



LED LIGHTED POWER AWNING



OVERSIZED BAGGAGE DOORS

Hideout is always just a touch away. You'll find 360 virtual tours, location of your nearest dealer, photos, videos and all of the latest information about Hideout on our easy to navigate website.



LUXURY COMES STANDARD \ THE STANDARD IN ULTIMATE VALUE



HIDEOUT LEADS THE INDUSTRY IN STYLISH COMFORT & CUSTOMER CONVENIENCE ALL WITH SUPERIOR QUALITY AND RELIABILITY. LOADED WITH VALUE & TONS OF STANDARD FEATURES, YOU ARE SURE TO HAVE A FUN FILLED WEEKEND WITH YOUR FRIENDS & FAMILY.





**28BHSWE**  
SHOWN IN SILVER BIRCH DECOR

LUXURY COMES STANDARD \ COMFORT AND LUXURY FOR THE WHOLE FAMILY



**22KBSWE**  
SHOWN IN SILVER BIRCH DECOR

ENJOY UPGRADE FEATURES WITH A FULL FEATURED INTERIOR KITCHEN WITH RANGE, LARGE OVEN, 7 CU. FT. REFRIGERATOR & PLENTY OF STORAGE, FOR UN-COMPROMISED FAMILY CONVENIENCE. ALSO, BRING THE FUN OUTDOORS WITH MODELS THAT HAVE CONVENIENT OUTDOOR KITCHENS.



**12 VOLT  
CHARGING STATION**



**BLUETOOTH  
DVD/CD/MP3 STEREO**



**LED LIGHTS**



**POWER TONGUE  
JACK**



- 1 Continuous Steel I-Beam
- 2 Walkable Crowned Roof
- 3 Hurricane Strap Reinforced Structure
- 4 Oversized Pass Through Storage
- 5 Diamond Plate Front Protector
- 6 One Piece TPO Roof
- 7 3/8" Roof Decking
- 8 Dual 30 Lb. LP Bottles

- 9 Lighted Electric Color Matched Awning
- 10 Residential Batten Insulation Throughout
- 11 Dual Battery Storage Tray
- 12 XL Entry Assist Handle
- 13 5/8" Seamless Floor Decking
- 14 E-Coat Corrosion Prevention Wheels
- 15 Four Stage Slide Room Seals
- 16 Easy Lift Steps

- 17 Radius Skirting
- 18 Easy Lube Axles
- 19 0.24 Aluminum Baked Enamel Siding
- 20 Black Framed, Tinted Safety Glass Windows
- 21 Rain Gutter with Extended Down Spouts
- 22 Fender Skirts
- 23 13,500 BTU Ducted Air Conditioner (Opt. 15K)
- 24 Bumper Sewer Hose Storage
- 25 Exterior TV Mount
- 26 Industry Top Performing Stabilizer Jacks  
(Fastest Extending/Retracting, Trouble Free Stabilizer on the Market)

ALL OF YOUR  
OUTDOOR KITCHEN  
NEEDS ARE CLOSE  
AT HAND



.....

OUTDOOR AND CAMP  
KITCHEN FEATURES  
ARE NOT AVAILABLE  
ON ALL MODELS

.....



**SCAN HERE**  
TO TAKE A 360° INTERIOR VIRTUAL  
TOUR OF THE HIDEOUT TRAVEL TRAILER.  
MORE VIRTUAL TOURS ARE AVAILABLE  
AT KEYSTONERV.COM



**LUXURY**  
COMES STANDARD



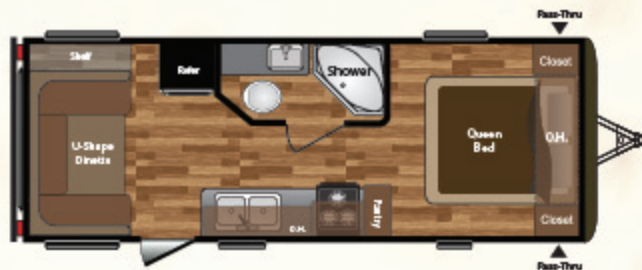
# LUXURY TRAVEL TRAILER FLOORPLANS

WWW.KEYSTONERV.COM/HIDEOUT



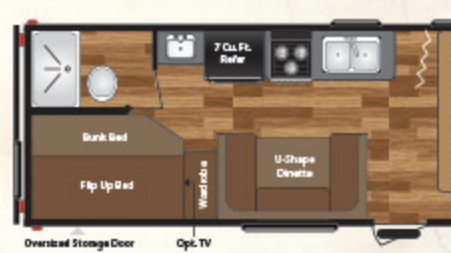
WEIGHT: 4102 LENGTH: 23' 0"

**19FLBWE**



WEIGHT: 4650 LENGTH: 26' 2"

**NEW 21FQWE**

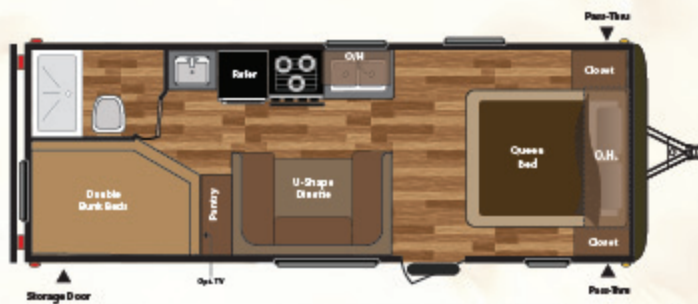


WEIGHT: 5569



WEIGHT: 5237 LENGTH: 28' 6"

**23RKSWE**



WEIGHT: 4501 LENGTH: 26' 5"

**24BHWE**



WEIGHT: 5785



**HEATED & ENCLOSED UNDERBELLY**



**CORRECT TRACK ALIGNMENT SYSTEM**



**BLACK TANK FLUSH**



**E-COATED W E-Z LUB**

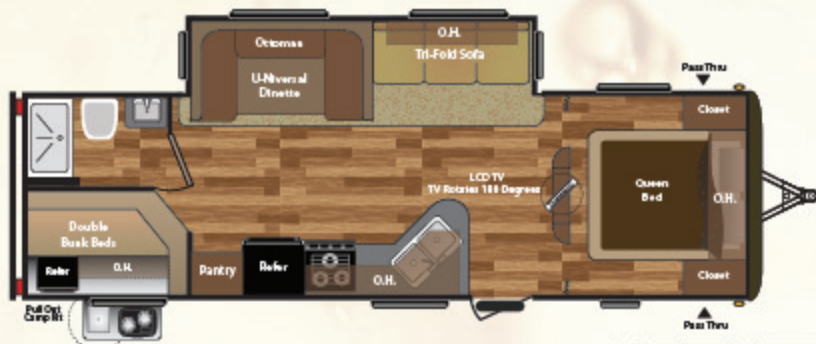






# LUXURY TRAVEL TRAILER FLOORPLANS

WWW.KEYSTONERV.COM/HIDEOUT



WEIGHT: 6378 LENGTH: 31' 6" **26BHSWE**



WEIGHT: 5120 LENGTH: 30' 0" **27RBWE**



WEIGHT: 6624 LENGTH: 30' 2" **NEW 27RKDSWE**



WEIGHT: 6674 LENGTH: 32' 6" **28BHSWE**



WEIGHT: 7474 LENGTH: 34' 11" **NEW 31BHDSWE**

MODEL	SHIPPING WEIGHT	CARRYING CAPACITY	HITCH	LENGTH*	HEIGHT	FRESH WATER	WASTE WATER	GRAY WATER	LPG
26BHSWE	6378	1392	770	31' 6"	11' 3"	60	38	78	60
27RBWE	5120	2480	600	30' 0"	10' 3"	60	40	40	60
27RKDSWE	6624	2926	750	30' 2"	11' 3"	60	38	76	60
28BHSWE	6674	2836	720	32' 6"	11' 3"	60	40	78	60
31BHDSWE	7474	2188	862	34' 11"	10' 10"	60	38	38	60
38BHDS	8463	1547	1210	39' 11"	11' 2"	45	38	38	60
38FDS	8394	1606	1205	39' 11"	11' 2"	45	38	38	60
38FKTS	9275	1725	1200	39' 11"	11' 4"	45	39	78	60
38FQTS	9585	1775	1200	39' 11"	11' 4"	45	78	78	60





**BEST IN CLASS**  
**U-NIVERSAL**  
**DINETTE**

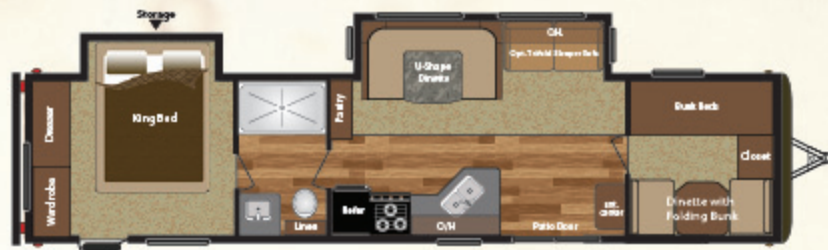


(AVAILABLE ON 26BHS, 26RLS, 27RKDS, 28BHS, 31BHD5)

**INDUSTRY BEST**  
**U-SHAPE DINETTE**

- *Best in class Do More Table*
- *Extra Counter Top Space*
- *Table Easily Folds Down*
- *Folds Into a Comfortable & Convenient Sleeper*
- *Sleeping Space For Two Adults*
- *Ottoman*

38' TRAVEL TRAILERS



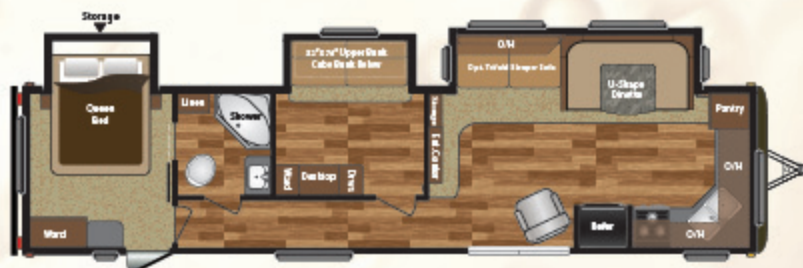
WEIGHT: 8463 LENGTH: 39' 11"

**NEW 38BHDS**



WEIGHT: 8394 LENGTH: 39' 11"

**NEW 38FDDS**



WEIGHT: 9275 LENGTH: 39' 11"

**NEW 38FKTS**



WEIGHT: 9585 LENGTH: 39' 11"

**NEW 38FQTS**



## LUXURY FIFTH WHEEL FLOORPLANS

WWW.KEYSTONERV.COM/HIDEOUT

WEIGHT: 7510 LENGTH: 30' 4" **NEW** 276RLSWEIGHT: 8183 LENGTH: 31' 1" **299RLDS**WEIGHT: 8610 LENGTH: 34' 11" **NEW** 295BHSWEIGHT: 9139 LENGTH: 35' 6" **308BHDS**WEIGHT: 9087 LENGTH: 34' 11" **298BHDS**WEIGHT: 9450 LENGTH: 36' 8" **NEW** 315RDTS

Combining focused design and unique product specifications, Max Turn Technology is the leader in optimum turn radius:

Also, Hideout is equipped with a heavy duty extended hitch. Combined - Max Turn Technology makes turning and maneuvering a breeze.



MODEL	SHIPPING WEIGHT	CARRYING CAPACITY	HITCH	LENGTH*	HEIGHT	FRESH WATER	WASTE WATER	GRAY WATER	LPG
276RLS	7510	2790	1440	30' 4"	11' 9"	45	39	69	60
295BHS	8610	2590	1680	34' 11"	11' 9"	45	39	78	60
298BHDS	9087	2413	1850	34' 11"	11' 9"	45	39	81	60
299RLDS	8183	2317	1485	31' 1"	11' 9"	45	38	38	60
308BHDS	9139	2561	1845	35' 6"	11' 9"	45	78	39	60
315RDTS	9450	2405	1695	36' 8"	11' 9"	45	39	78	60

DISCLAIMER: Product information is as accurate as possible as of the date of publication of this brochure. All features, floor plans, and specifications in this brochure are subject to change without notice. Please also consult Keystone's web site at [www.keystonerv.com](http://www.keystonerv.com) for more current product information and specifications. Tow Vehicle Disclaimer. CAUTION: Owners of Keystone recreational vehicles are solely responsible for the selection and proper use of tow vehicles. All customers should consult with a motor vehicle manufacturer or their dealer concerning the purchase and use of suitable tow vehicles for Keystone products. Keystone disclaims any liability or damages suffered as a result of the selection, operation, use or misuse of a tow vehicle. KEYSTONE'S LIMITED WARRANTY DOES NOT COVER DAMAGE TO THE RECREATIONAL VEHICLE OR THE TOW VEHICLE AS A RESULT OF THE SELECTION, OPERATION, USE OR MISUSE OF THE TOW VEHICLE. \*Length is defined as the distance from the centerline of hitch pin/coupler to rear bumper of trailer. 10/15



# LHS SINGLE AXLE TRAVEL TRAILER FLOORPLANS



## NEW LHS SINGLE AXLE

OUR SMALLEST, LIGHTEST, MOST AFFORDABLE HIDEOUT EVER...



**175LHS**



**NEW 177LHS**



**178LHS**



**185LHS**

### STANDARD FEATURES

- 6'4" Interior Height
- 96" Exterior Width
- 8k BTU A/C
- 20k BTU Furnace
- DSI Gas Water Heater
- 3.5 Cu. ft. Gas/Electric Refer
- E-Coated Wheels
- Radial Tires
- EZ Lube Axles
- 27 Gallon Fresh Water Capacity
- 1 Piece Dyna-Span Flooring
- High Rise Faucet
- Pex Plumbing
- Foot Flush Toilet
- .024 Mesa Aluminum Exterior
- Patio Awning
- Full Walk On Roof
- AM/FM/MP3 Bluetooth Player with Interior and exterior speakers
- Microwave
- 4 Stabilizer Jacks
- Front Diamond Plate
- Radius Exterior Door w/ Window
- Oversize Baggage Doors
- Pre-Drilled and Screwed

### • Cabinetry

- Lumber Core Styles
- Residential Ball Bearing
- Roller Guide Drawers
- 1 Piece TPO Roof
- Tinted Safety Glass Windows
- Monitor Panel
- Power Range Hood

### OPTIONAL FEATURES

- 13.5 BTU A/C
- Spare Tire with Carrier

\*\* SUBTRACT 7" FOR 8K BTU A/C

MODEL	SHIPPING WEIGHT	CARRYING CAPACITY	HITCH	LENGTH*	HEIGHT	FRESH WATER	WASTE WATER	GRAY WATER	LPG
175LHS	3305	655	460	21' 0"	** 9' 6"	27	27	27	20
177LHS	3290	1170	460	21' 5"	** 9' 6"	27	30	30	20
178LHS	3275	565	340	21' 5"	** 9' 6"	27	27	32	20
185LHS	3380	1020	395	21' 10"	** 9' 7"	27	27	27	20



# STANDARDS & OPTIONS

	LUXURY TT	LUXURY FW	SINGLE AXLE
<b>EXTERIOR</b>			
» Hideout Patented Hitch Vision	-	S	-
» Gel Coated MaxTurn Fiberglass Front Cap	-	S	-
» Electric Adjustable Front Landing Gear	-	S	-
» Diamond Plate	S	-	S
» Lighted Adjustable Power Awning	S	S	-
» Manual Patio awning	-	-	S
» Black Tank Flush	S	S	-
» Outside 110 receptacle	S	S	S
» E-Coated Wheels	S	-	S
» XL Entry Assist Handle	S	S	-
» Exterior TV Hookup/Cable & Bracket	S	S	-
» Cold Mountain Package* <small>*11/18 ON 19FLB, 21FQ, 22RB, 23RK5, 24BH, 27RB</small>	S	S	-
» Powder Coated I-Beam Frame	-	S	S
» Easy Lube Axles	S	S	S
» Full Length Outriggers	S	S	S
» Dual Battery Rack	S	S	-
» Two 30 lb. LP Bottles	S	S	-
» Exterior Speakers	S	S	S
» Black Radius Window Frames	S	S	S
» TV Antenna with Booster	S	S	S
» Cable Hook Up	S	S	S
» Seamless One Piece Full Walk On Roof	S	S	S
» Radius Entry Doors w/Integrated Struts	S	S	S
» Oversized Pass Thru Storage	S	S	S
» Hose Storage in the Bumper	S	S	S
» .024 Gauge Aluminum Siding	S	-	S
» Rain Gutters with Down Spouts	S	S	S
» Four Stage Slide Room Seals	S	S	-
» Roto-Cast Seamless Holding Tanks	S	S	S
» Hurricane Straps Reinforced Structure	S	S	S
» Four heavy duty stabilizer jacks	S	S	S
» Two Heavy Duty Stabilizer Jacks	-	S	-

	LUXURY TT	LUXURY FW	SINGLE AXLE
» Radial Tires	S	S	S
» Cambered chassis	S	S	S
» 96" Exterior width	S	S	S
» Exterior Shower	S	S	-
» Spare Tire and Carrier	0	0	0
» Rear Ladder (Most Models)	0	0	-
<b>INTERIOR</b>			
» Tri-Fold Sleeper Sofa <small>*11/18 ON 19FLB, 21FQ, 22RB, 23RK5, 24BH, 27RB, 24BH5, 24RL5, 22KBS, 27RKBS</small>	S	S	-
» Freestanding Dinette (Select Models)	-	0	-
» 30"x50" Empress Shower (Most Models)	-	S	-
» Large Medicine Cabinet	S	S	S
» Pleated Shades in Living Area	S	S	-
» Full Strutted Storage under Master Bed	S	S	-
» LED TV (Most Models)	S	S	-
» Interior Surround Sound Speakers	S	S	S
» Bluetooth AM/FM/DVD/CD/MP3 Stereo	S	S	-
» AM/FM Bluetooth w/MP3	-	-	S
» Microwave	S	S	S
» Monitor Panel	S	S	S
» 6 Cu. Ft. Refrigerator	S	S	-
» Residential Refrigerator (38BH05, 38F005, 38FK05, 38F005 only)	S	-	-
» Ball Bearing Drawer Guides	S	S	S
» 12 Volt 55 Amp Converter	S	S	-
» 15,000 BTU Air Conditioner	0	0	-
» 13,500 BTU Air Conditioner	S	S	0
» 8K BTU Air Conditioner	-	-	S
» Built-In 30,000 BTU Furnace <small>*11/18 ON 19FLB, 21FQ</small>	S	S	-
» 20K BTU Furnace <small>19FLB, 21FQ</small>	S	-	S
» 3.5 Cu. Ft. Gas/Electric Refer	-	-	S

	LUXURY TT	LUXURY FW	SINGLE AXLE
» Gas/Electric DSI Water Heater	S	S	-
» Flex Pex Tubing with 10 Year Warranty	S	S	S
» 78" Interior Height	S	-	-
» Tub Surround	S	S	-
» Foot Flush Toilet	S	S	S
» RG6 Cable and Satellite Wiring	S	S	S
» Pre-Drilled & Screwed Residential Cabinetry Throughout	S	S	S
» 4 1/2" Crowned Roof	S	S	S
» Loomed Wiring	S	S	S
» Range with Hi-Output Burner	S	S	S
» Reversible Dinette Cushions	S	S	S
» High Rise Kitchen Faucet	S	S	S
<b>SAFETY</b>			
» Safety Chains	S	S	S
» Break Away Switch	S	S	S
» Electric Brakes	S	S	S
» Carbon Monoxide Detector	S	S	S
» L.P. Gas Detector	S	S	S
» Smoke Detector	S	S	S
» Fire Extinguisher	S	S	S
» GFI Electrical Outlets	S	S	S
» Tinted Safety Glass	S	S	S

LUXURY TT = LUXURY TRAVEL TRAILERS  
 LUXURY FW = LUXURY FIFTH WHEELS  
 SINGLE AXLE = LHS SINGLE AXLE TRAVEL TRAILERS

S STANDARD | 0 OPTIONAL | - NOT AVAILABLE

Standard features and options are subject to change without notice.





MAPLECREEC DECOR



CEDAR DECOR



SILVER BIRCH DECOR



Our decors form the foundation for Hideouts carefully coordinated interiors. Modern upholstery, drapery, fabrics, hardware, fashionable window treatments, walls & countertops in the latest colors and materials.

RIGHT FEATURES. RIGHT PRICE.  
**RIGHT NOW**  
*HIDEOUT*



CONNECT WITH KEYSTONE RV AND STAY UP TO DATE WITH PRODUCT NEWS AND INFORMATION

VISIT OUR WEBSITE TO VIEW INTERIOR PHOTOS, 360 VIRTUAL TOURS AND MUCH MORE.





**HIDEOUT LUXURY**  
TRAVEL TRAILERS

**HIDEOUT LUXURY**  
FIFTH WHEELS

**HIDEOUT LHS SERIES**  
TRAVEL TRAILERS



HIDEOUT BRANDS ARE A PROUD RECIPIENT OF THE  
DEALER SATISFACTION QUALITY CIRCLE AWARD

*RIGHT FEATURES. RIGHT PRICE. RIGHT NOW.* [WWW.KEYSTONERV.COM/HIDEOUT](http://WWW.KEYSTONERV.COM/HIDEOUT)

## **BUY LOCALLY**

PURCHASING YOUR RV LOCALLY

It's up to you where you purchase your new Hideout, but may we suggest your local dealer? Not only does it help your local economy and provide jobs, but it will also give you an opportunity to develop a service relationship with someone that will come to know you and your coach. Congratulations on finding the best built, best equipped and best value in the industry. Happy travels!

YOUR LOCAL DEALER IS:



NOVEMBER 2015



**Keystone RV  
Company**

[WWW.KEYSTONERV.COM](http://WWW.KEYSTONERV.COM)  
574.535.2100 • 2642 HACKBERRY DRIVE  
P.O. BOX 2000 • GOSHEN, IN 46527



Member  
**RVIA**  
RECREATION VEHICLE  
INDUSTRY ASSOCIATION

Go RVing.