

2016

*American
Dream*

ENDLESS POSSIBILITIES.
BOUNDLESS LUXURY.



45T shown in Wexford Smoke interior decor with High Gloss Toffee wood cabinetry



BEAUTY THAT MOVES YOU



CONTEMPORARY GRAPHIC

MIDNIGHT VELVET



VENETIAN SAND



POLAR GRAPHITE



COPPER CANYON

Sofa



Carpet



Living Room Accent



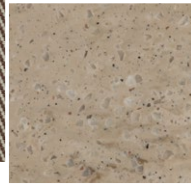
Tile



Bedsread



Countertop



Bed Accent



Backsplash



CHESTNUT



High-gloss finish

VENETIAN SAND

Sofa



Carpet



Living Room Accent



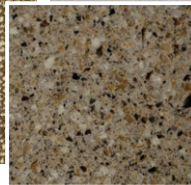
Tile



Bedsread



Countertop



Bed Accent



Backsplash



RICH CARAMEL



High-gloss finish

WEXFORD SMOKE

Sofa



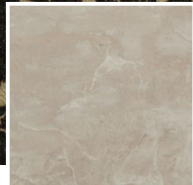
Carpet



Living Room Accent



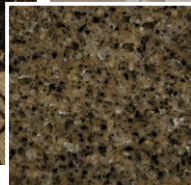
Tile



Bedsread



Countertop



Bed Accent



Backsplash



TOFFEE



High-gloss finish

*Interior décors and/or woods may be subject to change. Printed fabric samples are representations of actual fabrics and may be limited due to standard printing technology.

STANDARD & OPTIONAL FEATURES – INTERIOR



DRIVER CONVENIENCE

- Adjustable Brake & Throttle Pedals
- Auxiliary Fog Lamps
- Auxiliary Start Switch
- Chrome, Heated Side-View Mirrors w/Remote Adjustment & Turn Signal Indicators, Side Vision Cameras Integrated into Mirrors
- Driver & Passenger Drink Holder
- Driver & Passenger LED Reading Lights
- Dual-Dash Monitor Design
- Hadley® Air Horns
- Halogen Head Lamps
- Hardwood Dash Cabinetry w/Solid-Surface Top and Storage Drawers
- I.C.C. Light Switch
- Keyless Entry Door Access w/Key Fob
- Leather Smart Wheel w/Manual Tilt, Telescope
- Low-Profile, Automotive-Style Dash Instrumentation, Backlit Gauges & Switches
- Multiple Auxiliary 12-Volt Dash Receptacles
- One-Piece Windshield Bonded to Steel
- Power Driver Window
- Powered Windshield Privacy Blinds & Shades
- Pressure Pro® Active Tire Pressure Monitoring System
- SGM Dash Climate Control
- Silverleaf® Chassis Monitoring System
- Tag Axle Dump Switch
- Top-Mounted Intermittent Windshield Wiper System w/Wet Arm
- Villa® 6-Way Power Seat w/Heat, Power Lumbar & Adjustable Arms (Ultraleather™)
- Villa 6-Way Power Passenger Seat w/Heat, Power Lumbar, Adjustable Arms & Electric Footrest (Ultraleather™)

Electronics

- Color Camera Monitor w/One-Way Audio
- Sony® Rear-View Camera
- Xite® Touch Screen Dash Radio w/GPS Navigation & Sirius® Satellite Radio (Subscription Required)

GENERAL AMENITIES

- 30" Deep Slide-Out
- Decorative Ceiling Trim
- Fan-Tastic® Rain Sensor Power Roof Vents w/3-Speed Fan (3)
- Flush Bolt Latch Hardware on Pocket Doors
- Hardwood & Fabric Window Treatments
- Full Tile Floor
- Interior MultiPlex Power Management System
- LED Ceiling & Task Lighting
- Lined Cabinet Interiors
- Pop-Up Outlet at Dinette Countertop w/USB Outlets
- Power Grasscloth Shades & Blackout Night Roller Blinds
- Premium Hardwood Cabinet Doors
- Premium Hardwood Face-Framed Cabinetry & Moldings
- Solid-Surface Entry-Step w/LED Accent Lights & Power Cover

GENERAL AMENITIES (CONTINUED)

Optional

- Canadian Standards Build
- Custom Interior Request

- Factory V.I.P. Delivery

LIVING AREA

- Central Vacuum System
- Centralized Command Center
- Hardwood Front TV Overhead Cabinetry
- Large Passenger Window
- Raised-Panel Cabinet Doors
- Winegard In-Motion Satellite System

- Electric Fireplace (42G)

Electronics

- Sony® Blu-ray® Home Entertainment System w/WiFi
- Sony 40" LED HDTV
- Sony 48" LED HDTV

GALLEY

- Adjustable Shelves
- Countertop Decorative Edge Treatment
- Decorative Backsplash w/LED Light Strip
- Dehco® High-Rise Galley Faucet w/Pullout Sprayer
- LED Task Lighting
- Polished Solid-Surface Countertop & Flush Sink Covers
- Roller Bearing Full Extension Drawer Guides
- Solid Hardwood Drawer Fronts

- Stainless Steel Under-Mount Double-Bowl Sink

Appliances

- Convection Microwave Oven
- Dishwasher Drawer w/Cabinet Wood Front
- Flush-Mount Electric 2-Burner Induction Cooktop
- Whirlpool® French Door Refrigerator w/Icemaker In Door

BEDROOM

- Cedar-Lined Wardrobe
- Chest of Drawers w/Roller Bearing Full Extension Drawer Guides, Solid-Surface Top & Hardwood Drawer Fronts
- Electronic First Alert® Hidden Safe
- Exclusive Serenity Series King Mattress w/Signature Memory Foam
- Exclusive Serenity Max Series w/Adjustable His & Her Section & Head & Foot Massage Component Included (42G)

- Full-Length Rear Wardrobe
- Hardwood 6-Panel Doors
- Hardwood Framed Headboard w/Padded Fabric Accent
- Lift-Up Bed w/Under-Bed Storage (N/A 42G)
- Overhead Cabinetry Above Bed
- Polished Solid-Surface Counter & Nightstand Tops
- Recessed Bedroom Ceiling Fan

BEDROOM (CONTINUED)

- Remote Generator Start Switch
- Shoe Storage Rear Wardrobe

Electronics

- Sony® 32" LED HDTV

FURNITURE

- Decorative Dinette & Folding Guest Chairs (N/A w/Face-to-Face Dinette Options)
- Dinette w/Deep-Base Cabinet Storage, File Storage & Slide-Out Laptop Tray
- Polished Solid-Surface Dinette Table w/Slide-Out Extension
- Villa® Ultraleather™ Sofa Bed w/Air Mattress (42M, 45A, 45T)
- Villa Ultraleather Sofa w/Removable Arms (42M, 45A, 45T)

BATHROOM

- Fiberglass Shower w/Molded Seat/Shelf (42M & 42G)
- Full Tile Spa Shower (45A)
- Solid Surface Shower Pan, w/Decorative Inlay & Glass Curved Door (45T)
- Polished Solid-Surface Countertop w/Residential Faucet
- Tecma® Silence Plus 2-Button Porcelain Vacuum Flush Toilets (2)

- Sony Blu-ray® DVD Player
- Stacked Washer/Dryer

Optional

- King Air Mattress w/2 Remotes (N/A 42G)

- Villa Ultraleather Transformer Sofa Bed w/Air Mattress (42G)

Optional

- Villa Ultraleather Dinette Face-to-Face Dinette Ensemble (42M, 45T)
- Villa Ultraleather Sofa Bed w/Air Mattress (w/Ensemble) (42M)

PLUMBING/ELECTRICAL

- Aqua-Hot® 450D Multi-Zone Hydronic Heating System w/Pre Heat
- Energy Management System (50 Amp)
- Heat Pump on Rear AC Unit
- Heated Water & Holding Tank Compartments
- Holding Tank San-T-Flush™ System
- Pure Sine Wave Inverter/Charger (2800w)
- Inverter & Battery Monitor
- Multi-Point Water Pump Switching
- PEX Plumbing System
- SensaTank™ Level Monitoring System (Interior & Exterior Monitor)
- Surge Guard™ Electrical System Protection
- Three 15.0M Low-Profile Roof Air Conditioners
- Whole-Coach Water Filtration System
- Variable-Speed Water Pump
- Waste Management System (Macerator)

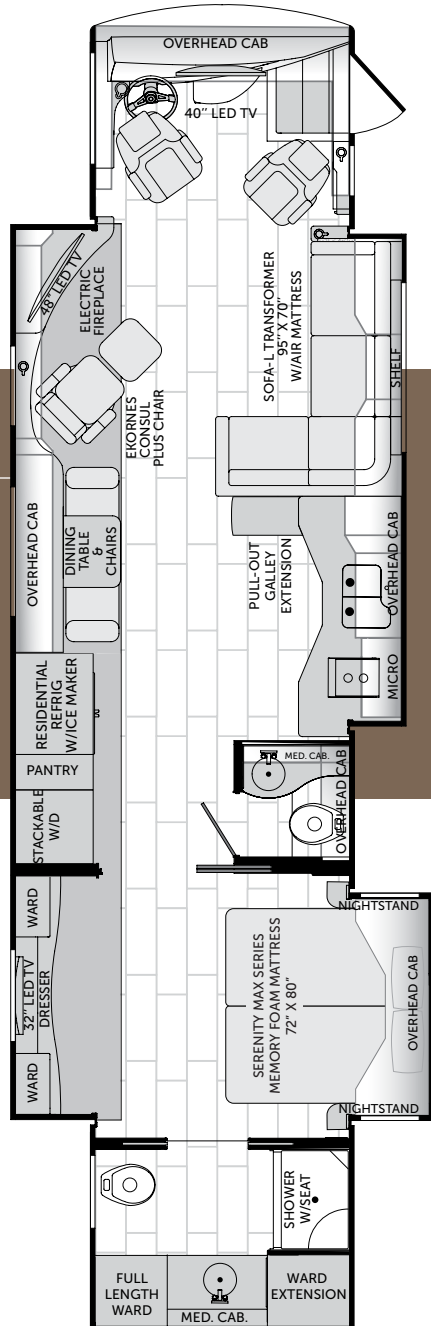
SAFETY

- 3-Point Integrated Seat Belts at Driver & Passenger Seats
- Carbon Monoxide (CO) Detector
- Daytime Running Lights
- Emergency Egress Window
- Fire Extinguisher
- Lighted Exterior Grab Handle
- Momentary Courtesy Lighting at Entry and Passenger Area
- Side Docking Lamps
- Side Turn Signal Indicators
- Smoke Detector/Alarm
- Scare Lights



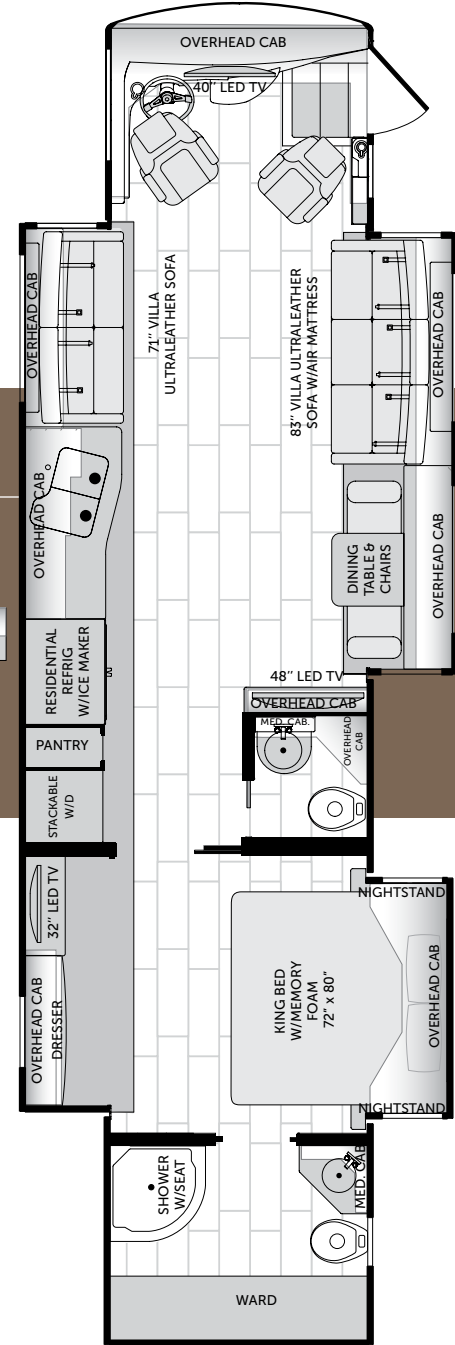
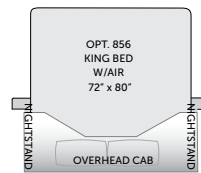
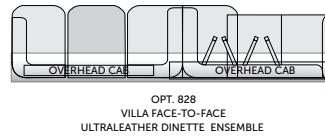
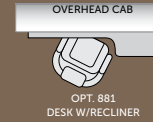
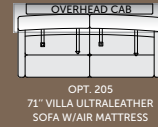
DESIGNED WITH LIFE IN MIND

42G



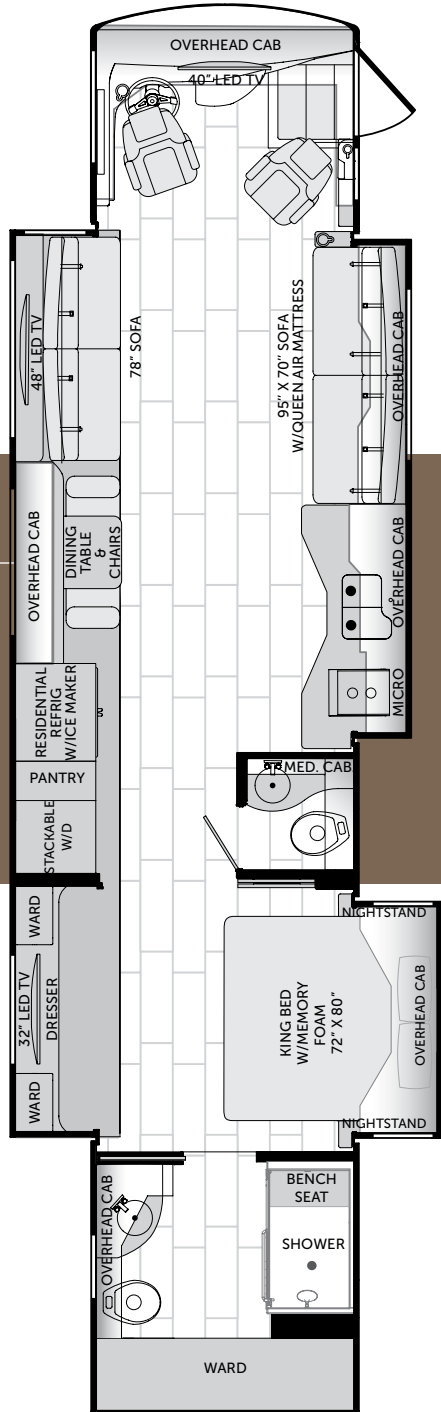
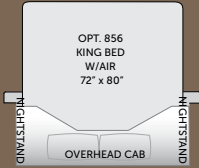
42M

Options



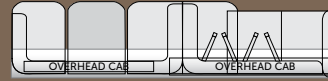
45A

Options

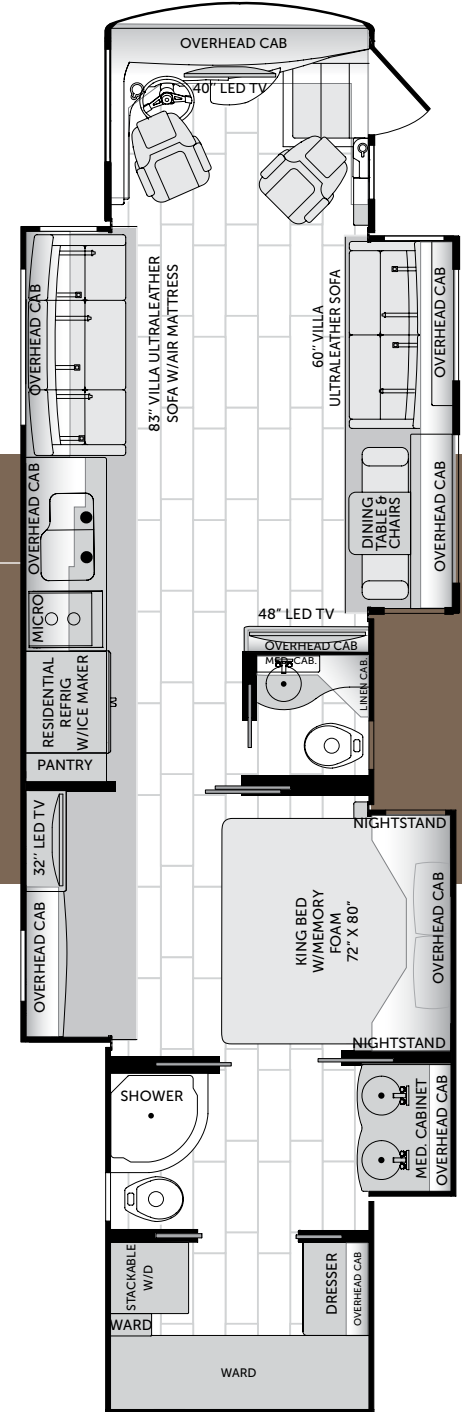
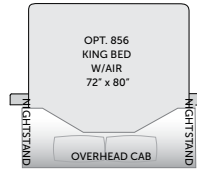


45T

Options



OPT. 828
VILLA FACE-TO-FACE
ULTRALEATHER DINETTE ENSEMBLE



WEIGHTS & MEASURES

WEIGHTS

CHASSIS — LIBERTY®				
Model	42G	42M	45A	45T
GVWR (lbs) ¹	47,000	47,000	51,000	51,000
Front GAWR (lbs) ²	17,000	17,000	17,000	17,000
Rear GAWR (lbs) ²	20,000	20,000	20,000	20,000
Tag Axle GAWR (lbs) ²	10,000	10,000	14,000	14,000
GCWR (lbs) ³	62,000	62,000	66,000	66,000
Hitch Rating Weight (lbs) ^{††}	15,000	15,000	15,000	15,000
Tongue Weight (lbs) [†]	1,500	1,500	1,500	1,500
Fuel Capacity (gal)	150	150	150	150

DIMENSIONS & CAPACITIES

MODEL	42G	42M	45A	45T
Wheelbase (inches)	302"	302"	302"	302"
Overall Length ⁴	42'-11.5"	42'-11.5"	44'-11.5"	44'-11.5"
Overall Height (with A/C)	12'-11"	12'-11"	12'-11"	12'-11"
Overall Width (maximum) ^{5, 6}	102"	102"	102"	102"
Interior Height (maximum)	84"	84"	84"	84"
Interior Width (maximum)	96"	96"	96"	96"
Fresh Water Holding Tank (gal)	100	100	100	100
Grey Water Holding Tank (gal)	60	60	60	60
Black Water Holding Tank (gal)	40	40	40	40

IMPORTANT — PLEASE READ: Product information, photography and illustrations included in this publication were as accurate as possible at the time of printing. For further product information and changes, please visit our website at www.AmericanCoach.com or contact your local American Coach dealer. Prices, materials, design and specifications are subject to change without notice. All weights, fuel, liquid capacities and dimensions are approximate. American Coach has designed its recreational vehicles to provide a variety of uses for its customers. Each vehicle features optimal seating, sleeping, storage and fluid capacities. The user is responsible for selecting the proper combination of loads (i.e., occupants, equipment, fluids, cargo, etc.) to ensure that the vehicle's capacities are not exceeded.

- GVWR (Gross Vehicle Weight Rating) is the maximum permissible weight of this fully loaded motorcoach. The GVWR is equal to or greater than the sum of the (UVW) unloaded vehicle weight plus the (OCCC) occupant cargo-carrying capacity*
- GAWR (Gross Axle Weight Rating) is the maximum permissible loaded weight a specific axle is designed to carry.
- GCWR (Gross Combined Weight Rating) is the value specified by the motorcoach manufacturer as the maximum allowable loaded weight of this motorcoach with its towed vehicle. Towing and braking capacities may be different. Refer to American Coach and chassis manufacturer's manuals for complete information.
- Length measured from front bumper to rear bumper (excludes accessories).
- Excludes safety equipment and awnings.
- Motorcoaches feature a body width over 96" which will restrict your access to certain roads. Before purchasing, you should research any state and/or province road laws which may affect your usage.

N/A = Not Applicable

- † The chassis manufacturer recommends the installation of a supplemental brake control system to activate the brakes on the vehicle or trailer you are towing. Hitch receiver ratings expressed are maximum for the hitch receiver installed and may require the purchase of additional equipment that is dependant on the weight of the towed load. Consult with hitch receiver manufacturer for further information.

ENGINE

CHASSIS – Liberty 450
MODEL: Freightliner® XCM Series
ENGINE: Cummins® ISL9 w/2-Stage Engine Brake
TORQUE: 1,250 lb-ft @ 1,400 RPM
HORSEPOWER: 450 HP
TRANSMISSION: Allison® 3000 MH, 6-Speed w/Electronic Shifter
ALTERNATOR: 170-Amp Leece-Neville
FRONT TIRES: 315/80R 22.5 Michelin® Radial (2)
REAR TIRES: 295/80R 22.5 Michelin Radial (6)

ENGINE

CHASSIS – Liberty 600
MODEL: Freightliner® SLM Series
ENGINE: Cummins® ISX15 w/3-Stage Engine Brake
TORQUE: 1,950 lb-ft @ 1,200 RPM
HORSEPOWER: 600 HP
TRANSMISSION: Allison® 4000 MH, 6-Speed w/Electronic Shifter
ALTERNATOR: 240-Amp Leece-Neville
FRONT TIRES: 315/80R 22.5 Michelin® Radial (2)
REAR TIRES: 295/80R 22.5 Michelin Radial (6)

- †† The Minimum Towable Load of this vehicle is the available weight capacity, up to GCWR, when the coach is fully loaded to maximum GVWR. However, if the coach is loaded to something less than maximum GVWR, that extra available weight capacity can be added to your Towable Load. For example, if your coach is loaded to 1,000 lbs less than maximum GVWR, your Towable Load increases accordingly. Do not exceed the hitch rating weight, GVWR or GCWR.

* UVW and OCCC are found on the label containing the federal certification tag in each RV.

** All 2016 American Coach motorcoaches include a 1-year American Coach Premier Roadside Assistance membership. For complete info, see your American Coach dealer.

CONTACT: To locate a dealer near you, visit our website at www.AmericanCoach.com or call 1-800-322-8216. We can also be contacted at American Coach Customer Care, P.O. Box 31, Decatur, IN 46733.

STANDARD & OPTIONAL FEATURES – EXTERIOR

GENERAL AMENITIES

- (1)-90" Electric Tray, 1-54" & (1)-36" Tray
- Air Inflation Hose w/Fittings
- Aqua-Hot® 10,000 Btu/h Engine Preheating
- Battery Disconnect Switches for House & Chassis
- Brushed Stainless Kick Plate Under Entry Door
- Convenience Light in Utility Compartment
- Cummins® Onan® 10.0 kW Quiet Diesel Generator on Power Slide-Out w/ Automatic Start
- Electrical Outlets in Luggage Compartments
- Exterior Sidewall TV (Sony® 40" LCD HDTV & JBL AM/FM/CD/DVD)
- Fresh Water Hose (25')
- Full-Width Rear Rock Guard w/Stainless Logo Panel
- Integrated Rear Upper Fiberglass Wing Deflector
- Inverter & Battery Monitor
- Large Rear Engine Access Door w/Power Assist Struts
- Maintenance-Free (8) Absorbed Glass Mat 6-Volt Batteries (Group GC2)
- "One Key" System (Luggage & Entry Doors)
- Power Cord Reel (50 Amp)
- Power Bus-Style Double Entry Step
- Power Luggage Door Locks (Select Doors) w/Remote Key Fob
- Power Water Hose Reel
- Protective Front Mask
- Roof-Mounted Engine Air Intake
- Solar Charging Panel (95w)
- Spray Wand w/Soap Dispenser & Paper Towel Holder
- Stainless Accent on Front Cap
- Strut-Assisted Side-Hinged Luggage Doors
- Undercarriage LED Lighting
- Windshield Washer 1.5-Gallon Reservoir

Optional

- Custom Exterior Paint Color Request
- Polished Stainless Exterior 6" Trim
- Rear Ladder

AWNINGS/WINDOWS/DOORS

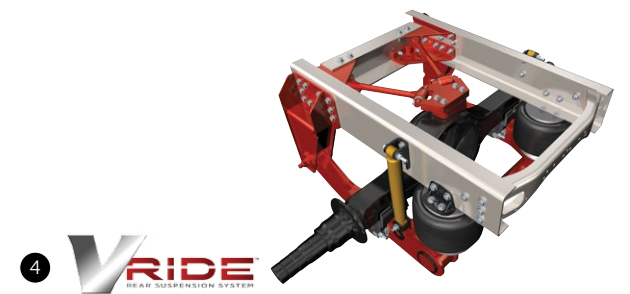
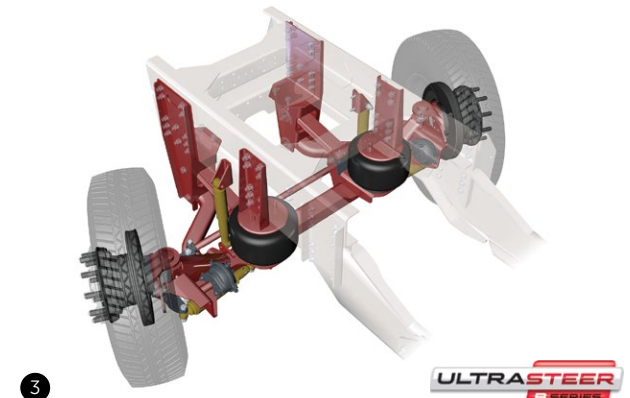
- 30" Avionics Entry Door w/Deadbolt & Pneumatic Air Latches
- Entry Screen Door w/Logo Kick Plate
- Frameless Flush-Mount Windows
- Powered Entry Door Awning
- Roof-Mounted Girard Nova 2-stage Power Awnings (2) w/Wind Sensor System & LED Lights
- Slide-Out Topper Awnings
- Window Awnings (Roadside)

CONSTRUCTION

- 5-Layer Flooring w/3" Bead Foam Insulation
- 6-Layer Radius Roof w/Bead Foam Insulation
- Automotive Full-Body Paint w/Sand & Buff High-Gloss Finish
- Central Electrical Panel for 120V/12V AC/DC
- Dense Bead Foam Insulation Throughout
- Fiberglass Front & Rear Quarter Panels
- Fiberglass Molded Front Bumper
- Full Fiberglass Front & Rear Caps
- Gel Coat Fiberglass Exterior Sidewalls w/No Wood Substrate
- Heated Water and Holding Tank Compartments
- Interlocking Aluminum Roof/Sidewall/Floor Connections
- Insulated Aluminum Framed & Paneled Luggage Compartment Doors
- One-Piece Molded Fiberglass Roof w/Radius Corners & Seamless Transition to Caps
- Pebble-Finished Fiberglass Basement Lining
- Steel Construction on Front Bulkhead
- Sound Absorption Material Front, Rear & Engine
- Vacu-bond® Sidewall, Roof, Floor & Rear Wall

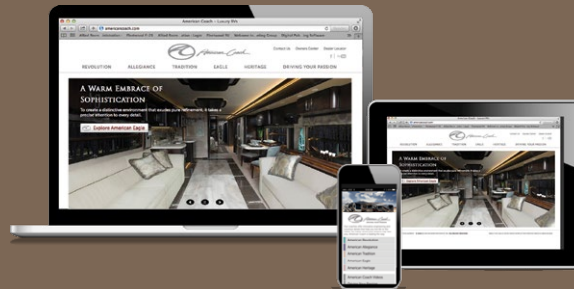
LIBERTY® CHASSIS

- Aluminum Wheels (6)
- Anti-Lock Brake System (ABS)
- Automatic 4-Point Dual (Air & Hydraulic) Leveling System
- Automatic Traction Control
- Bendix® ADB22x™ Front-Wheel Air Disc Brakes
- Chassis Filter Service Center
- Custom-Tuned Sachs® Shocks
- DEF Tank
- Dual Fuel Fill Doors, Locking
- Electro-Coated Heavy-Duty Steel Bridge Structure
- Engine Block Heater
- Full Air Brakes w/Automatic Slack Adjusters
- Side Radiator Configuration
- Two 1900 CCA Maintenance-Free Chassis Batteries
- V-Ride® Drive Axle Suspension



- 1) Convenient, spacious pass-through basement storage compartments
- 2) ZF double wishbone INDEPENDENT FRONT SUSPENSION and PREMIUM SACHS® SHOCKS. Featuring a 60-degree wheel radius for unmatched ride and handling and premium Sachs shocks to heighten comfort and increase driving safety, security and protection backed by the dependability of the ZF name.
- 3) UltraSteer B-Series — The UltraSteer B-Series straight beam axle and wide track suspension arms proved increased lateral stiffness. Offering an overall-improved ride, quality, and stable drivability to deliver complete control and precise maneuvering in all conditions.
- 4) V-RIDE™ — The V-Ride Suspension allows you to carry more gear with an increased towing capacity. But more than that, it provides greater durability and a more stable, comfortable ride.
- 5) BENDIX® DISC BRAKES — Bendix disc brakes deliver uniform stopping power and better steering control, as well as minimal brake fade and noise.

Visit AmericanCoach.com



American Coach Brands: American Revolution, American Allegiance, American Tradition, American Dream, American Eagle, American Heritage

American Coach Customer Care, P.O. Box 31, Decatur, IN 46733.

© 2015. REV Group, Inc. Printed in the USA. Inventory Control Number AD16B1, 11/15. Model Year 2016, First Edition.