

Standards & Options

STANDARDS EXTERIOR

- Aluminum wheels
- Quick recovery 6 gal G/E DSI water heater (17.8 gal/hr)
- Black tank flush
- Tinted windows
- Outside speakers
- 15,000 BTU ducted air conditioner
- Electric lighted awning
- Power stab jacks
- Power tongue jack
- Swing-out grab handle
- Secure stance EZ Lube axles
- Nitrogen filled radial tires
- HD digital TV antenna
- Satellite prep
- Enclosed underbelly
- Strutted entry doors
- Bumper mount grill
- Spare tire
- Amber LED front cap lights (10)
- Detachable power cord
- Pass-through storage area w/power Stab jack switch panel
- Outside shower
- Slam latch doors pass thru storage
- Walk on roof with ladder

STANDARD INTERIOR

- Microwave
- Range with cover
- 22" oven
- 32" or 40" LED TV
- 8 cu ft. double door refrigerator
- Jensen Bluetooth CD/DVD/stereo
- Designer privacy shades
- Pocket doors separating bedroom (VBM)
- Docking station: 12v, USB port and 100 plug
- Skylight in shower
- Foot flush porcelain toilet
- Detector for smoke, carbon monoxide, and LP gas
- Fire extinguisher
- Non-cracking stain resistant vinyl flooring
- Magnetized fridge door
- Drawers under dinette
- Barreled interior ceiling
- Tri-fold hide-a-bed sofa
- Solid surface countertops
- Fireplace with remote
- LED interior lights
- 1 Cool-gel memory foam residential 60x80 QB mattress
- Glass shower enclosure (VBM)
- Raised panel cabinet doors in kitchen
- Dinette ceiling feature with (2) LED lights
- 30,000 BTU furnace

OPTIONS

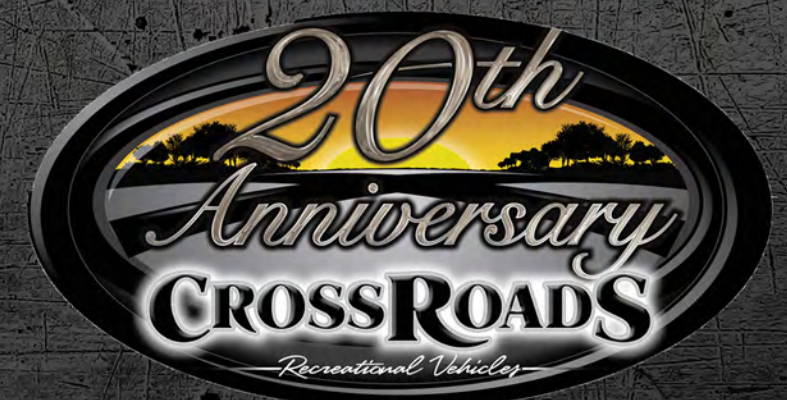
- Free-Standing table w/4 Chairs (replaces dinette booth)
- Fantastic fan with rain sensor (bed and/or bath)
- 50 amp service with 2nd air conditioner prep
- Additional air conditioner (13.5K)
- 30# tanks with cover
- Sink covers
- 29" LED TV (for exterior TV bracket)
- Theater seating (ST32RL, SF33RL)
- Ceiling fan (FW only)
- 2nd Skylight in kitchen
- ABS hitch cover (FW only)
- 10 gallon water heater (SF33RL & SF29RL)
- Outside cook center (replaces under bunk storage ST28BH)
- Extreme weather package: upgraded foil insulation and heated tank pads

SUNSET TRAIL GRAND RESERVE

Floorplans & Specifications

CROSSROADS[®]
RECREATIONAL VEHICLES

1140 W Lake Street • Topeka, IN 46571 • www.crossroadsrv.com





ST-26 RB



ST-32 BH



ST-28 BH



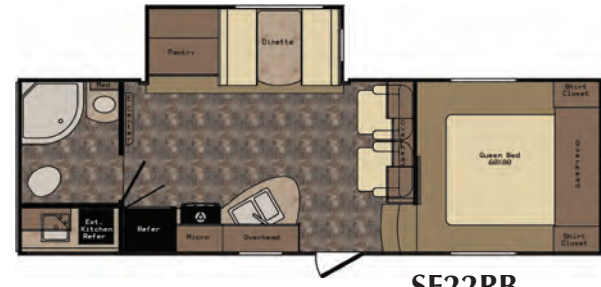
ST-32RE



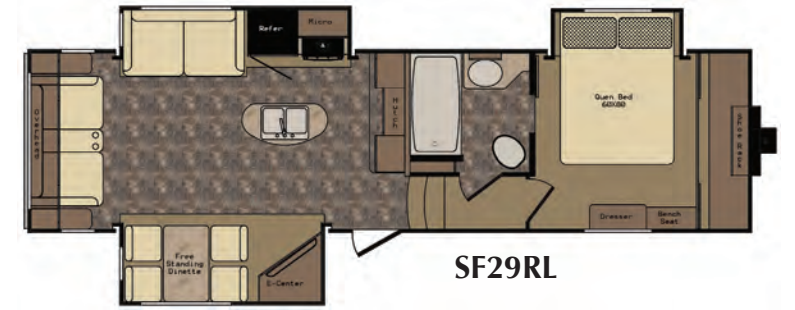
ST-29RL



ST-32RL



SF22RB



SF29RL



SF29BH



SF33RL

TRAVEL TRAILERS	ST-26 RB	ST-28 BH	ST-29RL	ST-32 BH	ST-32RE	ST-32RL
GVWR	9542	9592	9680	9714	9728	9798
UNLOADED WEIGHT	6401	6609	7220	7204	7749	7573
CARRYING CAP.	3141	2983	2460	2510	1979	2225
HITCH WEIGHT	742	792	880	914	928	998
AXLE WEIGHT	5659	5817	6340	6290	6799	6575
EXTERIOR LENGTH	30' 2"	32' 3"	34' 9"	36'	36'-8"	36'
EXT BOX LENGTH	27' 10"	29' 11"	30'9"	33'8"	32' 10"	33' 8"
EXT. HEIGHT w/AC	11'2"	11'2"	11'2"	11' 2"	11' 4"	11' 4"
FRESH WATER CAP.	40	40	40	40	40	40
BLACK WATER CAP.	40	40	40	40	40	40
GRAY / GALLEY CAP.	80	80	40	40	80	80
L.P. GAS	2 - 20# BOTTLES	2 - 20# BOTTLES	2 - 20# BOTTLES	2 - 20# BOTTLES	2 - 20# BOTTLES	2 - 20# BOTTLES
TIRE SIZE	225/75R15 D	225/75R15 D	225/75R15 D	225/75R15 D	225/75R15 D	225/75R15 D
TIRE RATED LOAD	2540# @ 65 PSI	2540# @ 65 PSI	2540# @ 65 PSI	2540# @ 65 PSI	2540# @ 65 PSI	2540# @ 65 PSI
RIMS	15 X 6 J	15 X 6 J	15 X 6 J	15 X 6 J	15 X 6 J	15 X 6 J
RIM RATED LOAD	2830	2830	2830	2830	2830	2830
GAWR	4400	4400	4400	4400	4400	4400
AXLES PER UNIT	2	2	2	2	2	2
HITCH WEIGHT RATIO	12%	12%	12%	13%	12%	13%
SLIDEOUTS PER UNIT	2	2	3	2	3	3
AWNING SIZE	15'	16'	12'	20'	12'	12' & 11'

FIFTH WHEELS	SF22RB	SF29BH	SF29RL	SF33RL
GVWR	9996	10530	10408	12158
UNLOADED WEIGHT	6731	8250	8238	9286
CARRYING CAP.	3265	2280	2170	2872
HITCH WEIGHT	1196	1730	1608	1998
AXLE WEIGHT	5535	6520	6630	7288
EXTERIOR LENGTH	26' 9"	31' 6"	32' 7"	35' 1"
EXT BOX LENGTH	26' 8"	30' 9"	31' 10"	35'3"
EXT. HEIGHT w/AC	12' 7"	12' 7"	12' 7"	12' 9"
FRESH WATER CAP.	40	40	40	40
BLACK WATER CAP.	40	40	40	80
GRAY / GALLEY CAP.	40	80	80	80
L.P. GAS	2 - 20# BOTTLES	2 - 20# BOTTLES	2 - 20# BOTTLES	2 - 20# BOTTLES
TIRE SIZE	225/75R15 D	225/75R15 D	225/75R15 D	225/75R15 D
TIRE RATED LOAD	2540# @ 65 PSI	2540# @ 65 PSI	2540# @ 65 PSI	2540# @ 65 PSI
RIMS	15 X 6 J	15 X 6 J	15 X 6 J	15 X 6 J
RIM RATED LOAD	2830	2830	2830	2830
GAWR	4400	4400	4400	5080
AXLES PER UNIT	2	2	2	2
HITCH WEIGHT RATIO	18%	21%	20%	22%
SLIDEOUTS PER UNIT	1	3	3	3
AWNING SIZE	14'	14'	10'	14' & 11'