

Outback

TRAVEL TRAILERS AND FIFTH WHEELS



DESIGNED FOR A LIFETIME OF RVING



Outback

DESIGNED FOR A LIFETIME OF RVING

What do you get when you combine the latest features, the best components and industry leading quality? You get an Outback. Whether you're looking for a small trailer for those quick weekend getaways or all the comforts of home for a cross country adventure Outback has something that fits your needs. See why Outback truly is Designed For A Lifetime of RVing!

www.keystonerv.com/Outback



OUTBACK *Ultra-Lite* **TRAVEL TRAILERS**

TOPS IN TOWING. Outback Ultra-Lite provides the comfort you need without all the weight. Get the maximum amount of space while minimizing your weight in one of the Outback Ultra-Lite models. You will find towing an Outback Ultra-Lite is a breeze. Designed to today's smaller trucks and SUV's.



PAGES 4-9



OUTBACK *Diamond Super-Lite* **TRAVEL TRAILERS**

COMFORTABLY CAMPING. Maximum features, maximum storage and maximum comfort. You are going to find Outback Diamond Super-Lites are designed for a lifetime of RVing.



PAGES 10-16



OUTBACK *Diamond Super-Lite* **FIFTH WHEELS**

SIZE MATTERS. All the room, storage and tow ability you expect in a 5th wheel in lengths that are manageable and easy to tow. Perfect for many half ton trucks!



PAGES 17-22





OUTBACK *Ultra-Lite*
TRAVEL TRAILER



293UBH BUNK ROOM



293UBH OUTSIDE KITCHEN



Outback

293UBH SHOWN IN TEAK DECOR



Outback Ultra-Lite's compact design comes in travel-friendly lengths and lightweight floorplans that make this travel trailer towable by many smaller vehicles. Also is loaded with many standard features not on other ultra-lite trailers*.

*CHECK WITH YOUR VEHICLE MANUFACTURER FOR TOWING SPECIFICATIONS



276UBH BUNK BEDS



276UBH BUNK BEDS



276UBH PANTRY/WARDROBE

OUTBACK ULTRA-LITE TOP FEATURES



Home stereo with operating app
(N/A in 21OURS, 24OURS, 25OURS)



Double welded aluminum cage
construction in walls, roof and floors.



Magnetic Door Catches are easy to
use and will not break. One inch thick bag-
gage doors are also standard.



32" High Definition Televisions are
standard in most Outback Ultra-lite models.



Power awning with LED strip light



No crank up Omni HDTV antenna



Enclosed underbelly



Aluminum truss roof system



8 cubic foot refrigerator



Power tongue jack



USB charging ports
(bedroom and living area)



Frameless windows





Outback
ULTRA-LITE

ROOF

1. Seamless One-Piece TPO Tan Colored Roof
2. Plywood Decking
3. R-14 Blanket Insulation
4. 5" Radius, Aluminum Roof Trusses
5. Full Length Drip Rail

SIDEWALL

6. Gel-Coated Champagne Fiberglass Exterior
7. 1/8" Luan Wall Backing
8. R-7 Solid Block Foam Insulation
9. 1 1/2" Box Welded Aluminum Frame Walls
10. Interior Decorative Wall Board
11. Diamond Plate on Front Cap

FLOOR

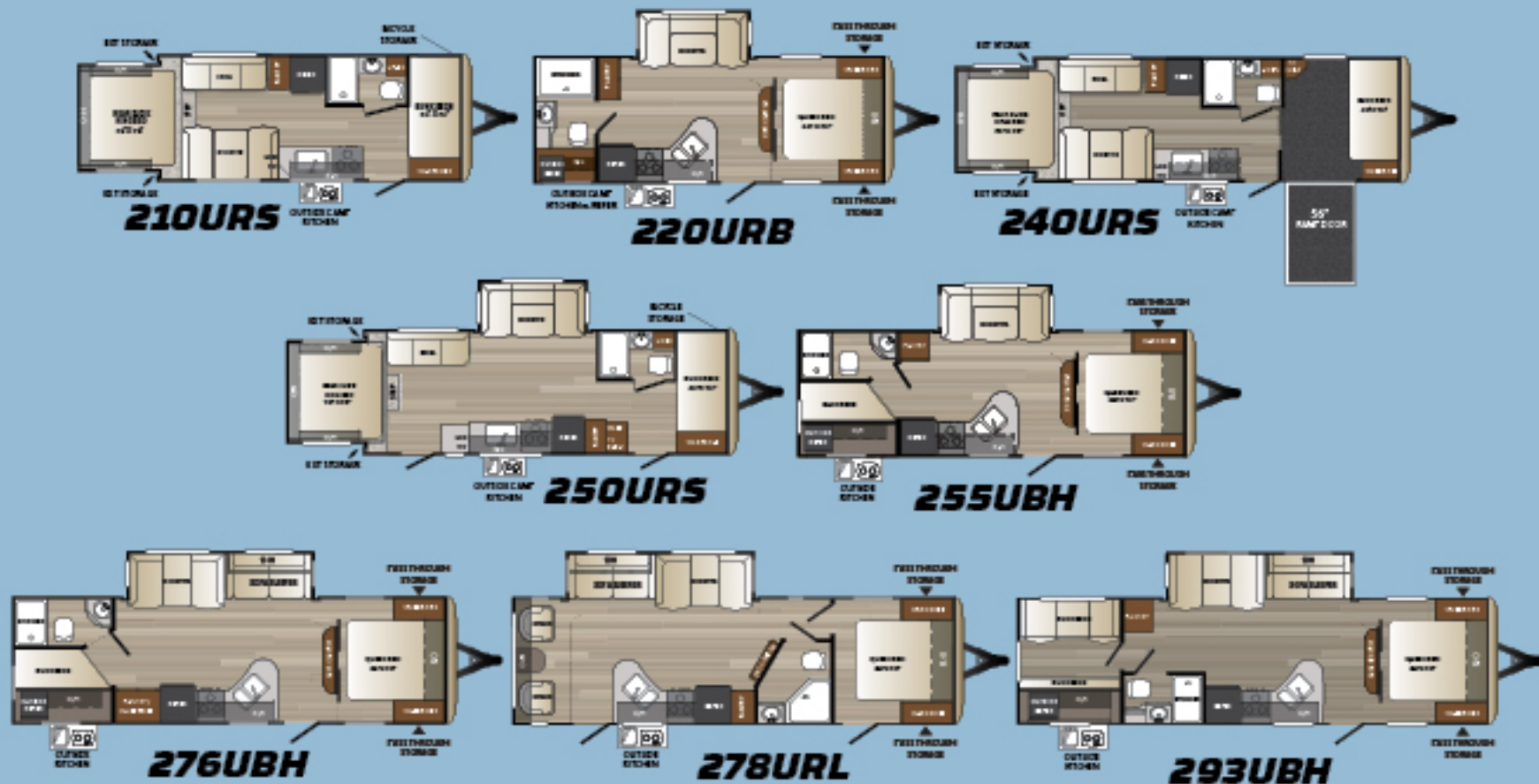
12. Residential Grade Linoleum
13. Floor Decking
14. R-10 Block Foam Insulation
15. Welded Aluminum Floor Joists
16. Bottom Layer Luan Decking
17. Duro Vapor Barrier Wrap
18. One Piece, Polypropylene Enclosed and Heated Underbelly
19. In Floor Residential Ducted Heat

CHASSIS

20. 6" Powder Coated Steel I-Beam Frame
21. Leaf Spring Suspension System
22. EZ Lube Axles with 10" Electric Brakes
23. 3-Step Entry Mounted to I-Beam Frame
24. Step Light

OUTBACK ULTRA-LITE TRAVEL TRAILERS

CONSTRUCTION



SPECIFICATIONS

	210URS	220URB	240URS	250URS	255UBH	276UBH	278URL	293UBH
SHIPPING WEIGHT	4475	4835	4950	TBD	5205	5620	5510	5915
CARRYING CAPACITY	2970	2705	2510	TBD	2380	2055	2090	1685
HITCH WEIGHT	445	540	460	TBD	585	675	605	760
EXTERIOR LENGTH*	23'	26'	28' 3"	27' 6"	28' 5"	31' 4"	31' 6"	33' 6"
EXTERIOR WIDTH	8'	8'	8'	8'	8'	8'	8'	8'
EXT. HEIGHT - A/C TOP	10' 7"	10' 7"	10' 7"	TBD	10' 7"	10' 7"	10' 7"	10' 7"
FRESH WATER (GAL.)	43	43	43	43	43	43	43	43
WASTE WATER (GAL.)	30	30	30	30	30	30	30	30
GRAY WATER (GAL.)	30	30	30	60	60	60	60	60
LP CAPACITY (LBS.)	40	40	40	40	40	40	40	40
AWNING	14'	12'	19'	19'	15'	17'	20'	18'

OUTBACK ULTRA-LITE STANDARDS AND OPTIONS

LIVING AREA

- Hand glazed mystic maple cabinetry
- 36" flush floor slides
- Large panoramic windows
- Pre-drilled and screwed cabinetry
- Custom designed box valance
- Linoleum flooring
- Large wood side drawers with steel guides
- Large overhead cabinets
- 32" HDTV (most models)
- Pleated shades
- USB charging port
- Batten ceiling accents
- LED lights

KITCHEN

- Deep single basin sink with 3" drains
- 8 cu. ft. refrigerator
- High-rise faucet
- Stainless steel microwave
- Upgraded laminate countertops
- Pantry w/removable shelves (most models)

BEDROOM

- Deluxe innerspring mattress
- TV hook-up
- Jalousie windows for maximum ventilation
- Residential bedspread
- His and her lights
- Bedroom speakers
- 2 shirt closets
- TV cubby (most models)

BATHROOM

- Power roof vent
- Skylight over tub
- Tub surround
- Deluxe medicine cabinet
- Large linen closet (most models)

APPLIANCES

- AM/FM/CD stereo with DVD player, MP3 hookup and bluetooth enabled (N/A in 210URS, 240URS, and 250URS)
- 8 cu. ft. refrigerator
- 3 burner range with oven
- Six gallon gas/electric DSI water heater by pass with 16.2 gallons per hour "quick recovery"
- 13,500 BTU AC wall thermostat
- 30,000 BTU furnace
- Stainless steel microwave

EXTERIOR STANDARDS

- Champagne colored fiberglass
- Frameless tinted windows
- Triple radius entry step
- Black tank flush
- Extra large baggage doors, 1" thick with continuous hinge and rubber D-seal
- Extended drip caps and full length drip rail
- Porch light/step light
- Hitch light
- Weather encapsulated body trim
- Exterior 120V receptacle
- Heated enclosed underbelly including tanks and valves
- LP tank cover
- Automotive style fender skirts
- Double welded dual battery brackets
- Exterior speakers
- Easy lube axles
- Outside camp kitchen
- Exterior quick connect LP hook-up
- Stabilizer jacks (4)
- Satellite prep
- Magnetic door holders
- Aluminum rims
- Front diamond plate rock guard
- Oversized exterior grab handle
- Power tongue jack
- Off door side activity light

WALLS - CONSTRUCTION

- Welded aluminum walls with R7 insulation
- Solid block foam insulation

ROOF

- 5" galvanized steel, trusses on 16" centers
- One-piece TPO roof (tan)
- R14 blanket insulation

FLOOR

- 2" welded aluminum laminated floor
- R10 block foam insulation
- Wrapped vapor barrier
- Polypropylene enclosed heated underbelly encloses tanks and valves

CHASSIS

- Leaf spring equalizing suspension system
- Powder coated I-beam
- EZ lube axles
- 10"-electric brakes
- 14" radial tires
- 14" spare tire, carrier & cover
- Correct Trace

UTILITIES

- 55-amp converter
- 20 lbs. LP bottles with auto changeover (2)
- Omni Directional TV antenna
- Detachable 30-amp shore power line
- LP leak detector
- Smoke detector
- Carbon monoxide detector
- Fire extinguisher
- Tinted safety glass windows
- Break-away switch
- Safety chains
- Manual slide backup on all electric slide outs
- Carbon monoxide detector
- 60 gallon grey water capacity (most models)

ULTRA-LITE EXTERIOR GROUP*

- Champagne colored fiberglass
- Laminated aluminum sidewalls
- Tinted safety glass windows
- Omni directional TV antenna
- Cable TV/Sat prep
- 14" Radial tires w/spare tire
- Stabilizer jacks
- Black tank flush
- Heavy duty easy lube axles
- Outside camp kitchen (most models)
- Electric awning w/LED strip lights
- Fully enclosed and heated underbelly
- Exterior speakers
- Patio light

ULTRA-LITE INTERIOR GROUP*

- AM/FM/CD/DVD Player - bluetooth enabled
- 3 Burner range with oven
- 32" LCD HDTV (most models)
- Skylight in bath
- Dusted A/C
- Microwave oven
- Pleated shades
- 6 Gal. gas electric DSI water heater with 16.2 quick recovery
- 8 cu. ft. refrigerator
- Deluxe sleeper sofa w/arm bolsters

OPTIONS

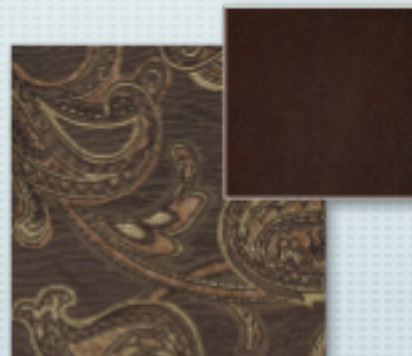
- 15,000 BTU Air Conditioner

* Denotes STD Build Options

DECOR



HEARTHSTONE



TEAK



ROSEWOOD



OUTBACK
Diamond Super-Lite
TRAVEL TRAILERS



325BH BUNK ROOM
SHOWN IN TEAK DECOR



328RL BEDROOM SHOWN
IN ROSEWOOD DECOR



Outback

325BH SHOWN IN TEAK DECOR



325BH OUTSIDE KITCHEN

328RL KITCHEN SHOWN IN ROSEWOOD DECOR



VAULTED CEILING 7' CENTER CEILING HEIGHT ALLOWS FOR ADDED HEADROOM, LARGER WINDOWS AND ADDED STORAGE



328RL LIVING AREA SHOWN IN ROSEWOOD DECOR



ALL HIGH DEFINITION TELEVISIONS ARE STANDARD IN OUTBACK DIAMOND SUPER-LITE TRAVEL TRAILERS.

OUTBACK TRAVEL TRAILERS

OUTBACK DIAMOND SUPER LITE TRAVEL TRAILER TOP FEATURES



Aluminum entry steps



Power stabilizer jacks



Slam Latch Baggage Doors with magnetic door catches



USB Charging Ports



Stainless steel appliances (with 8 cubic foot refrigerator)



Rest-a-lounge dinette w/pull-out storage drawers



Power Tongue Jack



The Heated and Enclosed Underbelly



Painted fiberglass front cap w/Stone Guard and LED lights



Home stereo system with operating app



IN-Command™ Smart Automation (see details on page 23)



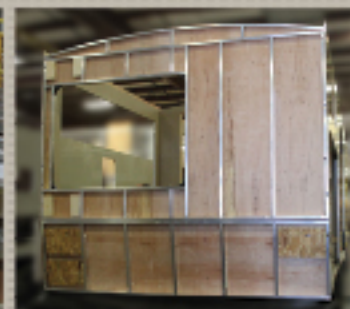
Rear roof ladder w/fully walkable roof



No crank Omni HDTV antenna



Walkable steel truss roof system



Double welded aluminum cage construction in walls, roof and floors.





ROOF

1. Seamless One-Piece TPO Tan Colored Roof
2. 3/8" Fully Walkable Wood Decking
3. R-14 Blanket Insulation
4. 5" Radius, Galvanized Steel Roof Trusses
5. Full Length Drip Rail

SIDEWALL

6. Gel-Coated Champagne Colored Fiberglass Exterior
7. 1/8" Luan Wall Backing
8. R-7 Solid Block Foam Insulation
9. 1 1/2" Box Welded Aluminum Frame Walls
10. Interior Decorative Wall Board
11. Painted Gel Coat Molded Fiberglass Front Cap w/ LED lights and Stone Guard

FLOOR

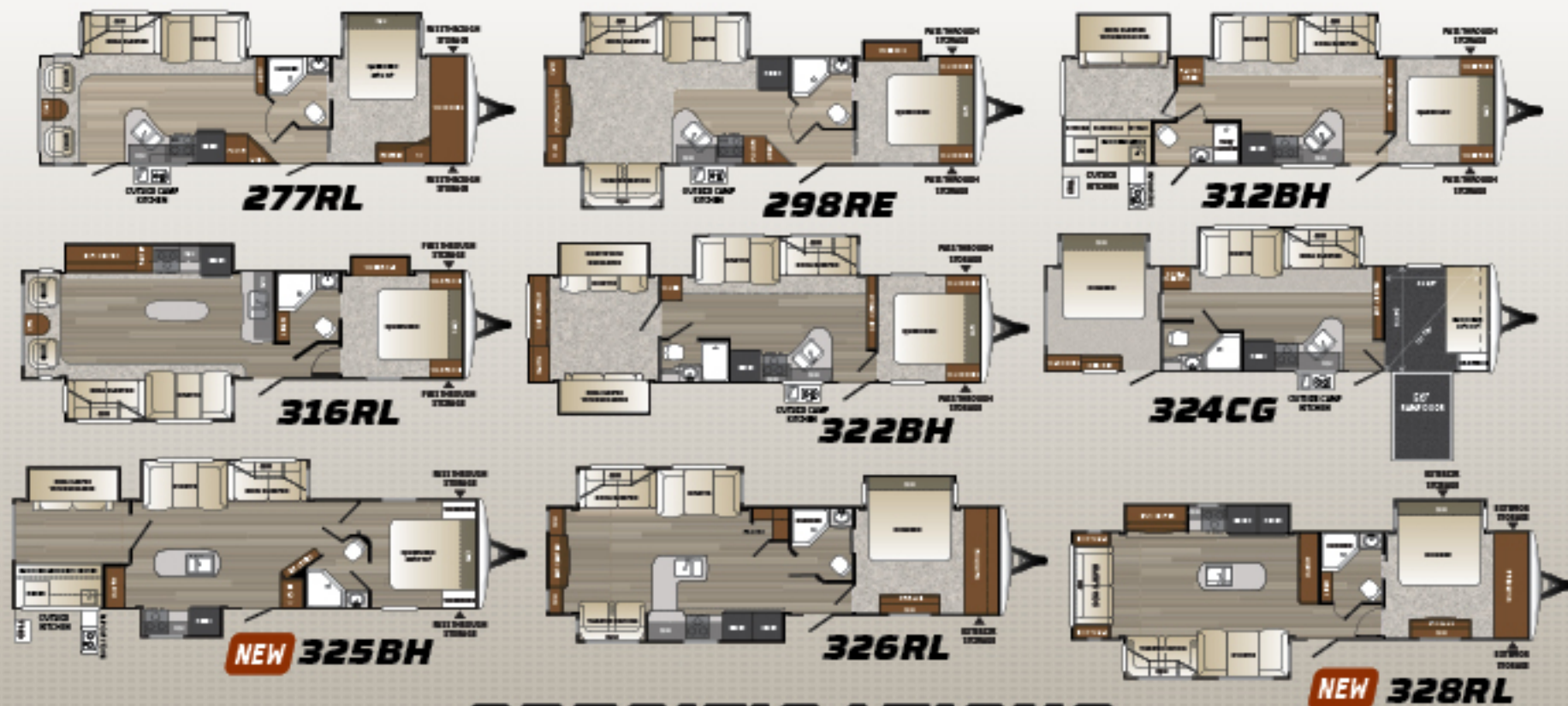
12. Residential Grade Stain Resistant Carpet and Linoleum
13. Floor Decking
14. R-10 Block Foam Insulation
15. Welded Aluminum Floor Joists
16. Bottom Layer Luan Decking
17. Duro Vapor Barrier Wrap
18. One Piece, Polypropylene Enclosed and Heated Underbelly
19. In Floor Residential Ducted Heat

CHASSIS

20. 8" Powder Coated Steel I-Beam Frame
21. Leaf Spring Suspension System
22. EZ Lube Axles with 10" Electric Brakes
23. 15" Radial Tires
24. Aluminum Entry Steps
25. Step Light

OUTBACK TRAVEL TRAILERS

CONSTRUCTION



SPECIFICATIONS

	277RL	298RE	312BH	316RL	322BH	324CG	325BH	326RL	328RL
SHIPPING WEIGHT	7480	7556	7803	7787	8115	7720	8325	8518	8585
CARRYING CAPACITY	2020	1944	1697	1713	2385	2780	2175	1982	1915
HITCH WEIGHT	870	925	1030	980	1120	985	980	1175	1210
EXTERIOR LENGTH	34' 10"	35' 2"	36'	35' 2"	36' 11"	36' 10"	37' 5"	36' 11"	37' 4"
EXTERIOR WIDTH	8'	8'	8'	8'	8'	8'	8'	8'	8'
EXT. HEIGHT - A/C TOP	11' 4"	11' 4"	11' 4"	11' 4"	11' 4"	11' 4"	11' 4"	11' 4"	11' 4"
FRESH WATER (GAL.)	53	53	53	53	53	53	53	53	53
WASTE WATER (GAL.)	34	34	34	34	34	34	34	34	38
GRAY WATER (GAL.)	68	68	68	68	68	68	68	68	76
LP CAPACITY (LBS.)	60	60	60	60	60	60	60	60	60
AWNING	19'	18'	18'	12'	18'	16'	19'	12'	13'



OUTBACK TRAVEL TRAILER STANDARDS AND OPTIONS

LIVING AREA

- Upgraded furniture package
- Hand glazed mystic maple cabinetry
- Lounge dinette
- 36" flush floor slides
- Large panoramic windows
- Pre-drilled and screwed cabinetry
- Custom designed box valance with soft curtains
- Linoleum flooring
- Large wood side drawers with steel guides
- Water soil, stain resistant fabrics
- Large overhead cabinets
- Residential tri-fold sleeper sofa
- HDTV
- Pleated shades*
- Vaulted ceiling
- Floorlights (2)
- USB charging port
- LED lighting
- Batten ceiling accent
- 36-fold sofa sleeper
- IN-Command Smart Automation

KITCHEN

- Single basin sink with 3" drains
- Trash can storage*
- Two door 8 cu. ft. refrigerator
- High-rise faucet w/pullout sprayer*
- Utensil tray
- 3 burner range with oven*
- Microwave
- Upgraded laminate countertops
- Paper towel holder
- Stainless steel appliances

BEDROOM

- Deluxe innerspring mattress
- TV hook-up
- Jalousie windows for maximum ventilation
- Residential bedspread
- Deluxe headboard
- His and her lights
- Bedroom speakers
- 2 Full length wardrobes
- Recessed cubby storage w/110 volt outlets (most models)
- USB charging port

BATHROOM

- Power roof vent
- Skylight over tub
- Porcelain foot flush toilet
- Tub surround*
- Garden shower (N/A 312, 322)
- Deluxe medicine cabinet
- Large linen closet (most models)

APPLIANCES

- Stainless steel
- DVD player with bluetooth remote control app
- Two door 8 cu. ft. refrigerator
- 3 burner range with oven*
- Six gallon gas/electric DSI water heater by pass with 16.2 gallons per hour "quick recovery"
- 13,500 BTU AC wall thermostat
- 30,000 BTU furnace
- Microwave

EXTERIOR STANDARDS

- Painted fiberglass front cap w/LED strip lights and rock guard
- Black framed tinted jalousie safety glass windows
- Black tank flush
- Assist entry grab handle
- Extended drip caps and full length drip rail
- Two security lights (one on each side)*
- Porch light
- Hitch light
- Step light
- Weather encapsulated body trim
- Exterior 120V receptacle
- Heated enclosed underbelly including tanks and valves
- LP tank cover
- Automotive style fender skirts
- Double welded dual battery brackets
- Exterior speakers
- Easy lube axles
- Outside camp kitchen (most models)*
- Exterior quick connect LP hook-up
- LED Hitch lights
- Satellite prep
- Slam latch baggage doors w/magnetic door holders
- Rear ladder
- Power tongue jack
- Black slide out endwalls
- Water docking station
- Power stabilizer jacks
- Aluminum entry steps

WALLS - CONSTRUCTION

- Welded aluminum walls with R7 insulation
- Solid block foam insulation

ROOF

- 5" Radius, vaulted galvanized steel, tapered trusses on 16" centers
- 3/8" roof decking
- One-piece TPO roof (tar)
- R14 blanket insulation

FLOOR

- 2" welded aluminum laminated floor
- R10 block foam insulation
- Wrapped vapor barrier
- Polypropylene enclosed heated underbelly encloses tanks and valves

CHASSIS

- Leaf spring equalizing suspension system
- Powder coated I-beam
- 10" electric brakes
- 15" radial tires*
- 15" spare tire, carrier & cover*
- Aluminum rims*

UTILITIES

- 55-amp converter
- 30 lbs. LP bottles with auto changeover
- Omni directional hands-free TV/Radio antenna
- 50-amp shore power line
- LP leak detector
- Smoke detector
- Carbon monoxide detector*
- Fire extinguisher
- Tinted safety glass windows
- Break-away switch
- Safety chains
- Manual slide backup on all electric slide outs
- 12 Volt battery disconnect
- Carbon monoxide detector
- RVIA
- Radial Tires
- 15" spare tire, carrier, and cover
- Aluminum rims

OUTBACK DESIGNER PACKAGE*

- Coat hooks (most models)
- Utensil rack
- Innerspring mattress
- Bedspread
- LP cover
- Pleated shades
- Decorative wall lights
- Trash can

OUTBACK COMFORT PACKAGE*

- 13,500 BTU ducted air conditioner
- TV antenna/cable
- AM/FM/CD stereo with bluetooth
- Microwave
- Entry handle

OUTBACK DIAMOND PACKAGE*

- Champagne medallion high glass exterior fiberglass
- Frameless windows
- Theater seating (298, 326, 328)
- Solid surface countertops w/pullout faucet
- Power stabilizer jacks

POPULAR OPTIONS

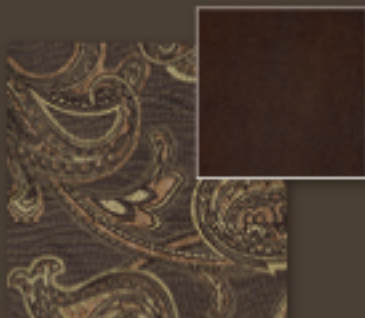
- Free-standing dinette (326, 328)
- Second Air Conditioner
- 15,000 BTU Air Conditioner
- Fireplace (N/A 277)

* Denotes STD Build Options

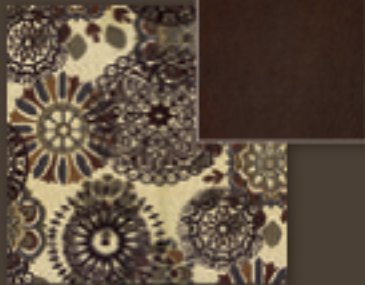
DECOR



HEARTHSTONE



TEAK



ROSEWOOD

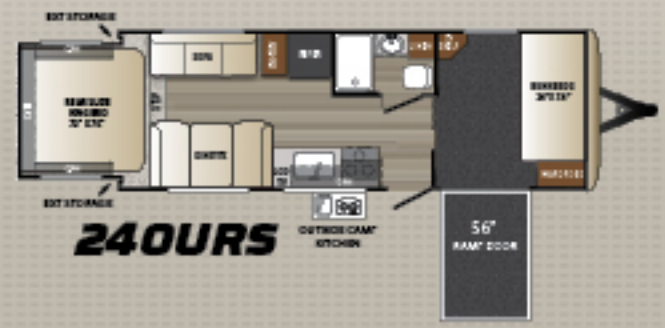


CARGO GARAGE

by Keystone

Enjoy the versatility of the 240 URS and 324 CG side load ramp trailers. They are perfect trailers to carry motorcycles, quads and golf carts. Not into toys? Consider these models for pets, mobile offices or a convenient way to transport hunting gear, swap meet items and trade show materials. Of Course it can always be used as an awesome bunk room!

Available on these two travel trailer floor plans:



OUTBACK TRAVEL TRAILERS



OUTBACK *Diamond Super-Lite* **FIFTH WHEELS**



296FRS BATHROOM 296FRS BEDROOM WITH QUEEN SIZE BED



Outback

296FRS SHOWN IN ROSEWOOD DECOR

OUTBACK *Diamond Super-Lite* **FIFTH WHEELS**



318FBH BUNK ROOM SHOWN IN ROSEWOOD DECOR



318FBH SHOWN IN TEAK DECOR



296FR5 SHOWN IN ROSEWOOD DECOR

OUTBACK FIFTH WHEEL TOP FEATURES



Vaulted Ceilings and front profile increase head room to 6' 10" at the end of the bed!



Auto leveling system on fifth wheels



Large Pass Through Storage compartments utilize Slam Latch Baggage Doors for easy access to all of your belongings.



USB Charging Ports are conveniently located in the living area and the bedroom.



Frameless windows



The Utility Center contains most of your unit controls in one easily accessible location



The Heated and Enclosed Underbelly extends the camping season and provides better tow ability.



Home stereo system with operating app



Tri-Fold Sleeper Sofas are easy to set up, require no electrical service and provide comfortable nights rest.



Rear roof ladder



No crank Omni HDTV antenna



Walkable steel truss roof system



Outback

Diamond Super-Lite

ROOF

1. Seamless One-Piece TPO Tan Colored Roof
2. 3/8" Fully Walkable Wood Decking
3. 5" Radius Galvanized Steel Roof Trusses
4. 1/8" Vinyl Protected Ceiling Panel

SIDEWALL

5. Metal Backing EGG Strips
6. Aerodynamic Radius High Gloss Front Fiberglass Cap w/ Hitch Vision
7. R-R Fiberglass Insulation End Walls
8. Box Welded Aluminum Side and End Walls
9. Corner Radius Window Inserts
10. R-R Solid Block Foam Insulation
11. 1/8" Luan Wood Backing
12. Gel Coated Champagne Colored Fiberglass Exterior

FLOOR

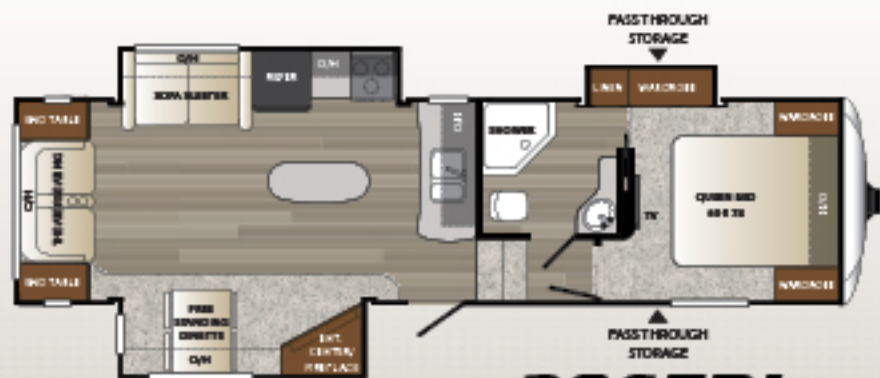
13. High Density Residential Carpet w/ Stain Resistance
14. Residential Grade Linoleum
15. Laminated Floor Decking
16. Residential In Floor Ducted Heat
17. Hi-Density Block Foam Insulation
18. Welded Box Frame Aluminum Floor Joists,
19. Duro Wrap Vapor Barrier

CHASSIS

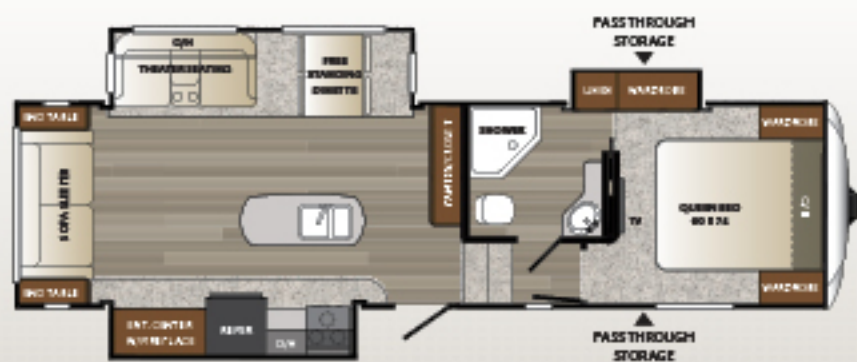
20. 8" to 10" "Powder Coated" Steel I-beam Frame
21. One Piece, Polypropylene Enclosed and Heated Underbelly
22. 15" Radial Tires with Electric Brakes
23. EZ Lube Axles
24. Leaf Spring Suspension System
25. Entry Step Light

OUTBACK FIFTH WHEELS

CONSTRUCTION



286FRL



296FRS



315FRE



NEW 318FBH

SPECIFICATIONS

	286FRL	296FRE	315FRE	318FBH
SHIPPING WEIGHT	8550	8577	8738	8975
CARRYING CAPACITY	2450	2423	2262	2025
HITCH WEIGHT	1685	1715	1675	1785
EXTERIOR LENGTH	33'	32' 6"	36' 6"	33' 5"
EXTERIOR WIDTH	8'	8'	8'	8'
EXT. HEIGHT - A/C TOP	13' 1"	13' 1"	13' 1"	11' 4"
FRESH WATER (GAL.)	53	53	53	53
WASTE WATER (GAL.)	34	34	34	76
GRAY WATER (GAL.)	34	68	68	76
LP CAPACITY (LBS.)	60	60	60	60
AWNING	15'	15'	15'	19'



OUTBACK FIFTH WHEEL STANDARDS AND OPTIONS

LIVING AREA

- Upgraded furniture package
- Hand glazed mystic maple cabinetry
- Free-standing dinette (N/A 318FBH)
- 36" flush floor slides
- Large panoramic windows
- Pre-drilled and screwed cabinetry
- Custom designed box valance with soft curtains
- Linoleum flooring
- Large wood side drawers with steel guides
- Water soil, stain resistant fabrics
- Large overhead cabinets
- Residential tri-fold sleeper sofa
- HDTV
- Pleated shades*
- Decorative wall lights*
- Vaulted ceiling
- Floor lights (2)
- USB charging port
- LED lighting
- Batten ceiling accent
- Tri-fold sofa sleeper
- Home stereo system with operating app
- IN-Command smart automation

KITCHEN

- Deep single basin sink with 3" drains
- Trash can storage*
- Two door 8 cu. ft. refrigerator
- High-rise faucet*
- Utensil tray
- 3 burner range with oven*
- Microwave
- Upgraded laminate countertops
- Paper towel holder
- Stainless steel appliances

BEDROOM

- Deluxe innerspring mattress
- TV hook-up
- Jalousie windows for maximum ventilation
- Residential bedspread
- Deluxe headboard
- His and her lights
- Bedroom speakers
- 2 Full length wardrobes
- USB charging port

BATHROOM

- Power roof vent
- Skylight over tub
- Porcelain foot flush toilet
- Tub surround*
- Garden shower
- Deluxe medicine cabinet
- Large linen closet (most models)

APPLIANCES

- DVD player with bluetooth remote control app (most models)
- Two door 8 cu. ft. refrigerator
- 3 burner range with oven*
- Six gallon gas/electric DSI water heater by pass with 16.2 gallons per hour "quick recovery"*
- 13,500 BTU AC wall thermostat
- 30,000 BTU furnace
- Microwave

EXTERIOR STANDARDS

- Molded fiberglass front cap w/LED strip lights
- Black framed tinted jalousie safety glass windows
- Black tank flush
- Assist entry grab handle
- Extended drip caps and full length drip rail
- Two security lights (one on each side)*
- Porch light
- Hitch light
- Step light
- Weather encapsulated body trim
- Exterior 120V receptacle
- Heated enclosed underbelly including tanks and valves
- LP tank cover
- Automotive style fender skirts
- Double welded dual battery brackets
- Exterior speakers
- Easy lube axles
- Exterior quick connect LP hook-up
- Stabilizer Jacks (2)
- LED Hitch lights
- Satellite prep
- Slam latch baggage doors w/magnetic door holders
- Rear ladder
- Black slide out endwalls
- High gloss medallion champagne colored sidewalls
- 4 point auto leveling
- Aluminum entry steps

WALLS - CONSTRUCTION

- Welded aluminum walls with R7 insulation
- Solid block foam insulation

ROOF

- 5" Radius, vaulted galvanized steel, tapered trusses on 16" centers
- 3/8" roof decking
- One-piece TPO roof (tan)
- R14 blanket insulation

FLOOR

- 2" welded aluminum laminated floor
- R10 block foam insulation
- Wrapped vapor barrier
- Polypropylene enclosed heated underbelly encloses tanks and valves

CHASSIS

- Leaf spring equalizing suspension system
- Powder coated I-beam
- 10" electric brakes
- 15" radial tires*
- 15" spare tire, carrier & cover*
- Aluminum rims*

UTILITIES

- 55-amp converter
- 30 lbs. LP bottles with auto changeover
- Omni directional hands-free TV/Radio antenna
- LP leak detector
- Smoke detector
- Carbon monoxide detector*
- Fire extinguisher
- Tinted safety glass windows
- Break-away switch
- Safety chains
- Manual slide backup on all electric slide outs
- 12 Volt battery disconnect
- Carbon monoxide detector
- RVIA
- Radial Tires
- 15" spare tire, carrier, and cover
- Aluminum rims
- 50 amp service, wired and braced for second A/C
- Fireplace

OUTBACK DESIGNER PACKAGE*

- Coat hooks (most models)
- Utensil rack
- Innerspring mattress
- Bedspread
- Pleated shades
- Decorative wall lights
- Trash can

OUTBACK COMFORT PACKAGE*

- 13,500 BTU ducted air conditioner
- TV antenna, cable, AM/FM/CD stereo with bluetooth
- Microwave
- Entry handle
- Free-standing dinette (most models)

OUTBACK DIAMOND PACKAGE*

- Champagne medallion high gloss exterior fiberglass
- Frameless windows
- Awning w/LED lights
- Theater seating (N/A 318FBH)
- Solid surface countertops w/pullout faucet

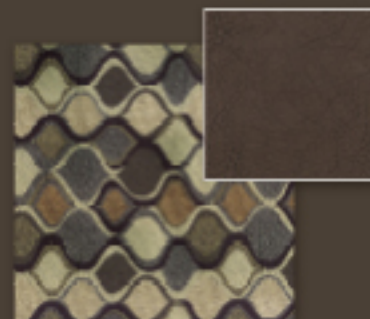
POPULAR OPTIONS

- Second Air Conditioner (bedroom)
- 15,000 BTU air conditioner

* Denotes STD Build Options



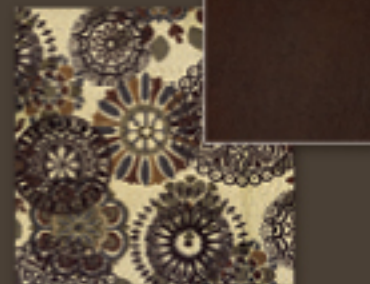
DECOR



HEARTHSTONE

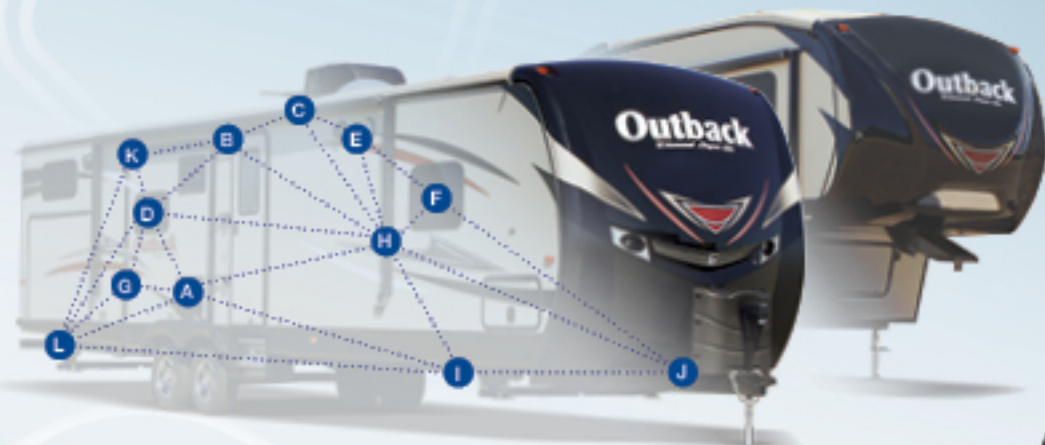


TEAK



ROSEWOOD

Relax. You're iN-Command™



Display Commander



- Never lose your controller
- Multiple Users
- When you have your phone, you're iN-Command

Monitor and Control Functions

The iN-Command™ system gives you total control over your Keystone RV's functions and features like never before.

- (A) Turn on and off the water pump and water heater. This system enables you to select between electric or propane fuel sources, or both.
- (B) Turn on and off exterior lights.
- (C) Turn on and off awning lights.
- (D) Turn on and off interior lights.
- (E) Turn on and off security lights.
- (F) Control customized lighting zones such as main, dinette, mood, and night lights; even "all on, all off".
- (G) Extend and retract slide rooms.
- (H) Extend and retract patio awnings.
- (I) Monitor status of your fresh, gray and black water holding tanks.
- (J) Check your battery status.
- (K) Rename your slide-rooms and lighting groups to any name you choose to make it easy to remember.
- (L) Raise and lower electric jacks

*iN-Command is not available on Outback Ultra-Lite travel trailers

Control • Systems Monitoring • Safety

FINALLY A SYSTEM YOU CAN TRUST.

iN-Command™ by JENSEN® embraces the next generation of controls for your Keystone RV by acting as the central hub of operations and puts you at the helm using your preferred smart device. But how does this all-encompassing system work? What, exactly, does it monitor and control? Let's take a closer look at iN-Command piece by piece.

The Display Commander is your primary point of contact with iN-Command. All of the switches and monitoring panels that have cluttered up interior walls in the past are integrated into this one sleek, touch screen monitor. What really makes the Display Commander stand out, however, is that it can be controlled remotely with a smart device using the free JENSEN iN-Command mobile app. This app performs all of the same functions as the Display Commander, but from the convenience of your mobile device.



iN-Command™
CONTROL SYSTEMS
BY JENSEN



Download and install the Free
JENSEN® iN-Command™ App
from Google Play or Apple App Store for
the ultimate in control.



TOWABLE INDUSTRY FIRST

Wired for Performance

Keystone's Exclusive Unified Wiring Standard

iN-Command utilizes the new Keystone Unified Wiring Standard. Color-coded and numbered, each circuit in your coach can instantly be identified, simplifying diagnostics, troubleshooting and service.

Keystone has implemented this Unified Wiring Standard across ALL Indiana-built brands and is the first towable manufacturer to do so.





Outback

www.keystonerv.com/Outback

Designed for a Lifetime of RVing



Go RVing
Life's A Trip

YOUR LOCAL OUTBACK DEALER:

2642 Hackberry Drive
PO Box 2000
Gothen, IN 46527-2000
(574) 535-2100



**Keystone RV
Company**

www.keystonerv.com

Product information is as accurate as possible at the date of publication of this brochure. Features, floor plans, and specifications are subject to change without notice. Please also consult Keystone's web site at keystonerv.com for more current product information and specifications. Tow Vehicle Disclaimer: CAUTION: Owners of Keystone recreational vehicles are solely responsible for the selection and proper use of tow vehicles. All customers should consult with a motor vehicle manufacturer or their dealer concerning the purchase and use of suitable tow vehicles for Keystone products. Keystone disclaims any liability or damages suffered as a result of the selection, operation, use or misuse of a tow vehicle. KEYSTONE'S LIMITED WARRANTY DOES NOT COVER DAMAGE TO THE RECREATIONAL VEHICLE OR THE TOW VEHICLE AS A RESULT OF THE SELECTION, OPERATION, USE OR MISUSE OF THE TOW VEHICLE. DECEMBER 2015