



190 Popular

190 Popular



Your home away from home

The best vacations are a combination of excitement, adventure, rest and relaxation. With the 190 Popular, no longer do you need to sacrifice all the comforts and conveniences of home in order to achieve your dream vacation. The 190 Popular is the perfect mix of style and comfort with everything you need at your fingertips including a full-length wardrobe, ample storage, dining at the front, sleeping at the rear, and a well equipped galley. Whether you are headed away for a weekend escape, or have a longer vacation planned, the 190 Popular is the perfect way to get away from it all.

Available with

ECO TREK
TECHNOLOGY BY ROADTREK





Features

- Galley features 3.0 cu. ft. refrigerator, microwave and two burner recessed stove
- Power sofa easily converts to a king or twin bed(s)
- Ample storage including full-length wardrobe
- Separate eating and sleeping areas

Base Model	Chevrolet Express 3500 extended van
Travel Capacity	Six
Sleeping Capacity	Three (with optional temp. bathroom)
Dining	Front & rear
Engine	6.0 L SFI gas V8
Batteries	Two 6 V AGM, 2,400 W
Water Heater	Propane with bypass, 23 L/6 U.S. gal., 12,000 BTU
Water Capacity	
Fresh	115 L/31 U.S. gal.
Black	40 L/10 U.S. gal.
Gray	85 L/23 U.S. gal.
Tow Weight	8,200 lbs. (3,700 kg)
Tongue Weight	1,000 lbs. (450 kg)



Interior Color Options

Cabinetry



Cherry



Bamboo



Ebony

Main & Accent Fabric



Tan

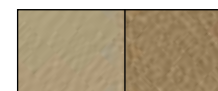


Platinum

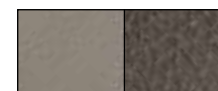


Onyx

Leather Seating



Tan



Platinum

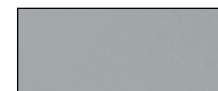


Onyx

Exterior Paint Options



White



Silver Ice



Charcoal Gray

190 Popular

Specifications

Exterior length	20' 5" (6,220 mm)
Exterior width (without mirrors)	6' 7" (2,007 mm)
Interior aisle width	30" (760 mm)
Exterior height	8' 9" (2,660 mm)
Interior standing height	6' 1" (1,855 mm)
Wheelbase	155" (3,940 mm)
Gross vehicle weight rating	9,600 lbs. (4,355 kg)
Occupant & cargo carrying capacity*	2,000 lbs. (900 kg)
Gross combined weight rating*	16,000 lbs. (7,258 kg)
Towing – tow weight*	8,200 lbs. (3,700 kg)
Towing – tongue weight*	1,000 lbs. (450 kg)
Fuel type	Gas
Fuel capacity	117L/31 U.S. gal.
Fresh water capacity	115 L/30 U.S. gal.
Black holding tank capacity	40 L/10 U.S. gal.
Gray holding tank capacity	85 L/23 U.S. gal.
Storage capacity (with options)	1,520 L/54 cu. ft. (1,680 L/59 cu. ft.)
Rear king sleeping maximum (width x length)	73" x 76" (1,855 mm x 1,930 mm)
Rear twin bed - Left (width x length)	27" x 76" (690 mm x 1,930 mm)
Rear twin bed - Right (width x length)	27" x 72" (690 mm x 1,830 mm)
Front single bed - Right (width x length)	22" x 74" (560 mm x 1,880 mm)

* Refer to www.roadtrek.com for more details.

Peace of Mind RV Warranty

Six year unlimited mileage/km, Peace of Mind motorhome warranty, covering the manufacture of the motorhome, appliances, electronics, plumbing and EcoTrek batteries. Original manufactures warranty on all appliances will be applied first. Warranty excludes the complete chassis and AGM batteries which have a normal one year manufacturer's warranty.

Chassis Warranty

3 year/36,000 mile or 60,000 km limited "bumper to bumper" warranty and 5 year/60,000 mile powertrain warranty as offered by General Motors. Refer to chassis manufacturers' website for complete details.

Coach Features

	Standard	Optional
Air conditioner – 110 V, 10,200 BTU	X	
Armoire – interchangeable with right lounge seat		X
Awning – 11' 6" (3,500 mm) power awning	X	
Bathroom – temporarily enclosed with bifold door		X
Bathroom – permanently enclosed with sink & shower	X	
Batteries – two 6 V AGM, 2,400 W	X	
Batteries – additional two 6 V AGM batteries		X
Connection – external – 110 V / 30 AMP	X	
Detectors – smoke, propane & CO	X	
Dinette w/table (converts to twins or king size bed)		X
EcoTrek Lithium Power Module (200 or 400 AMP hrs)		X
Furnace – propane automatic, 16,000 BTU	X	
Generator – Conventional gasoline with remote start, Onan 2.8 kW		X
Generator (Under hood) – 12V, 3,500W, with two extra 6V batteries, 2,500W inverter		X
GoSun solar cooker		X
Home theater system – 5.1 surround sound & dual center speakers with DVD, CD, AM/FM radio, dual use rear speakers	X	
Mattress – single folding for 1 st & 2 nd row seats		X
Microwave oven – 110 V, 20 L/0.7 cu. ft., 700 W	X	
Monitor panel – water, propane & battery charge levels, battery disconnect & generator hour meter	X	
Portable solar cell 200W		X
Power converter with charger – 110/12 V, 3-step 45 AMP charger	X	
Power inverter – 12/110 V, 750 W	X	
Propane tank – 38 L/10 U.S. gal., 45 lbs.	X	
Rear power sofa with "Halo" leather upholstery	X	
Refrigerator – 12/110V/propane, 3.0 cu. ft. with auto source selection	X	
Seats – passenger side 2 nd row captains seat		X
Screen package – side door windows, side door & rear door		X
Sewage disposal system – 12 V macerator sewage pump	X	
Solar charging system – daylight - 200 W with charge controller		X
Storage compartments (exterior) – two below floor	X	
Stove – propane; two burner recessed with flush cover	X	
TV – 24" HD flat screen on rotating bracket with remote		X
Volt Start Auto start Battery Protection Technology		X
Water heater – propane with bypass, 23 L/6 U.S. gal., 12,000 BTU	X	
Water system – on demand 12 V with water pump	X	

Chassis Features

	Standard	Optional
4 x 4 – On-demand, all-wheel drive and manually selectable reduction gear with expanded adaptive electronic aids.		X
Airbag – Six standard airbags (driver & passenger)	X	
Alternator – 145 AMP	X	
Axle – rear – 3.42 ratio	X	
Battery – 600 AMP	X	
Bluetooth – for phone	X	
Brakes – anti-lock (ABS), four wheel disc	X	
Camera – rearview backup	X	
Climate control	X	
Continental spare tire carrier		X
Cooling – transmission oil – external	X	
Cruise control	X	
Engine – 6.0 L Vortec V8 (gas)	X	
Fender flares – Custom wheel flare moldings (All 4 wheels)		X
Headlights – automatic on/off	X	
Mirrors (exterior) – power, heated with convex	X	
OnStar® – audio system includes GPS navigation & MyLink with 7 inch color touch screen		X
4G LTE WIFI – Built-in 4G LTE wifi connectivity with connection for up to 7 devices	X	
Power – 224 kW/323 HP	X	
Radio – Chevy MyLink radio with navigation, AM/FM stereo, CD player & touch screen navigation	X	
Receiver – Class IV	X	
Stability program – Adaptive (accounts for load)	X	
Theft deterrent system	X	
Tilt steering	X	
Tire storage – rear storage area	X	
Tires – LT245/76R16 black wall	X	
Torque – 504 Nm/373 lb.-ft.	X	
Transmission – automatic 6-speed heavy duty	X	
Wheels – 16" aluminum polished with steel spare		X
Window operation – power; front doors only	X	
Wiring harness for towing – 4-way & 7-way connector	X	

Roadtrek Motorhomes Inc. reserves the right to make changes at any time, without notice, in colors, materials, equipment, specifications and models. This information is intended as a guide only; please visit www.roadtrek.com for a complete list of specifications and options. Some motorhomes may be shown with equipment that is optional. Accessories shown in the photography are not included.

Find Your Roadtrek



Connect With Us



Roadtrek Motorhomes Inc. 100 Shirley Avenue, Kitchener, ON Canada N2B 2E1 | Toll-free: 1.888.ROADTREK (762-3873) | Phone: 519.745.1169 | Fax: 519.745.1160





210 Popular

210 Popular



The ultimate fusion of design

A true Class B motorhome, the 210 Popular was crafted with care and precision. From front to rear you will find the 210 Popular has a spacious design and an abundance of storage so you'll never have to leave anything behind. The rear power sofa folds down into a luxurious king-size bed for two, with an additional sleeping area at the front for a third passenger. Experience diverse, exciting and beautiful locations with the 210 Popular, and fulfill all your travel dreams.

Available with

ECOTREK
TECHNOLOGY BY ROADTREK





Base Model	Chevrolet Express 3500 extended van
Travel Capacity	Five (USA)/Three (CAN)
Sleeping Capacity	Three
Dining	Front & rear
Engine	6.0 L SFI gas V8
Batteries	Two 6 V AGM, 2,400 W
Water Heater	Propane with bypass, 23 L/6 U.S. gal., 12,000 BTU
Water Capacity	
Fresh	135 L/36 U.S. gal.
Black	40 L/10 U.S. gal.
Gray	85 L/23 U.S. gal.
Tow Weight	7,650 lbs. (3,450 kg)
Tongue Weight	1,000 lbs. (450 kg)

Interior Color Options

Cabinetry



Cherry



Bamboo



Ebony

Main & Accent Fabric



Tan

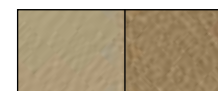


Platinum

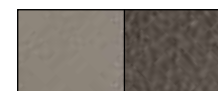


Onyx

Leather Seating



Tan



Platinum

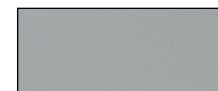


Onyx

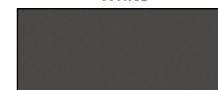
Exterior Paint Options



White



Silver Ice



Charcoal Gray

Features

- Expansive galley with a beautiful granite countertop, convection microwave oven, and a 5 cu. ft. refrigerator
- Automatic propane heating system
- Extensive storage capacity
- Comfortable and spacious permanent bathroom with stand-up shower
- Increased interior headroom



210 Popular

Specifications

Exterior length	21' 11" (6,680 mm)
Exterior width (without mirrors)	7' 4" (2,135 mm)
Interior aisle width	30" (760 mm)
Exterior height	8' 9" (2,660 mm)
Interior standing height	6' 2" (1,880 mm)
Wheelbase	155" (3,940 mm)
Gross vehicle weight rating	9,600 lbs. (4,355 kg)
Occupant & cargo carrying capacity*	1,450 lbs. (650 kg)
Gross combined weight rating*	16,000 lbs. (7,258 kg)
Towing – tow weight*	7,650 lbs. (3,450 kg)
Towing – tongue weight*	1,000 lbs. (450 kg)
Fuel type	Gas
Fuel capacity	117L/31 U.S. gal.
Fresh water capacity	135 L/36 U.S. gal.
Black holding tank capacity	40 L/10 U.S. gal.
Gray holding tank capacity	85 L/23 U.S. gal.
Storage capacity (with options)	1,940 L/69 cu. ft. (2,040 L/72 cu. ft.)
Rear king sleeping maximum (width x length)	80" x 78" (2,030 mm x 1,980 mm)
Rear twin bed (width x length)	30" x 78" (760 mm x 1,980 mm)
Front single bed (width x length)	22" x 74" (560 mm x 1,880 mm)

* Refer to www.roadtrek.com for more details.

Peace of Mind RV Warranty

Six year unlimited mileage/km, Peace of Mind motorhome warranty, covering the manufacture of the motorhome, appliances, electronics, plumbing and EcoTrek batteries. Original manufactures warranty on all appliances will be applied first. Warranty excludes the complete chassis and AGM batteries which have a normal one year manufacturer's warranty.

Chassis Warranty

3 year/36,000 mile or 60,000 km limited "bumper to bumper" warranty and 5 year/60,000 mile powertrain warranty as offered by General Motors. Refer to chassis manufacturers' website for complete details.

Coach Features

	Standard	Optional
Air conditioner – 110 V, 10,200 BTU	X	
Air conditioner – undermount, 12V, 30,000 BTU with self shut off		X
Armoire – interchangeable with right lounge seat		X
Awning – 11' 6" (3,500 mm) power awning	X	
Bathroom – permanently enclosed with sink & shower	X	
Batteries – two 6 V AGM, 2,400 W	X	
Batteries – additional two 6 V AGM batteries		X
Connection – external – 110 V / 30 AMP	X	
Detectors – smoke, propane & CO	X	
Dinette w/ table (converts to twins or king size bed)		X
EcoTrek Lithium Power Module (200, 400 or 800 AMP hrs)		X
Furnace – propane automatic, 16,000 BTU	X	
Generator – Conventional gasoline with remote start, Onan 2.8 kW		X
Generator (Under hood) – 12V, 3,500W, with two extra 6V batteries, 2,500W inverter		X
GoSun Solar BBQ/Oven		X
Home theater system with 5.1 surround sound & dual center speakers with DVD, CD, AM/FM radio, dual use rear speakers	X	
Mattress – single folding for 1 st & 2 nd row seats		X
Microwave oven – 110 V convection, 28 L/1.0 cu. ft., 1,800 W convection/1,000 W microwave	X	
Monitor panel – water, propane & battery charge levels, battery disconnect & generator hour meter	X	
Portable solar cell 200W		X
Power converter with charger – 110/12 V, 3-step 45 AMP charger	X	
Power inverter – 12/110 V, 750 W	X	
Propane tank – 38 L/10 U.S. gal., 45 lbs.	X	
Rear power sofa with "Halo" leather upholstery	X	
Refrigerator – 12 V/110 V 2-way fridge, 5.0 cu. ft. with auto source selection	X	
Seats – passenger side 2 nd row captain seats		X
Screen package – side door windows, side door & rear door		X
Sewage disposal system – 12 V macerator sewage pump	X	
Solar charging system – daylight - 200 W with charge controller		X
Storage compartments (exterior) – three below floor	X	
Stove – propane; two burner recessed with flush cover	X	
TV – 24" HD flat screen on rotating bracket with remote		X
Volt Start Auto start Battery Protection Technology		X
Water heater – propane with bypass, 23 L/6 U.S. gal., 12,000 BTU	X	
Water system – on demand 12 V with water pump	X	

Chassis Features

	Standard	Optional
Airbag – Six standard airbags (driver & passenger)	X	
Alternator – 145 AMP	X	
Axle – rear – 3.42 ratio	X	
Battery – 600 AMP	X	
Brakes – anti-lock (ABS), four wheel disc	X	
Camera – rearview backup	X	
Climate control	X	
Continental spare tire carrier		X
Cooling – transmission oil – external	X	
Cruise control	X	
Engine – 6.0 L Vortec V8 (gas)	X	
Fender flares – Custom wheel flare moldings (all 4 wheels)		X
Headlights – automatic on/off	X	
Mirrors (exterior) – power, heated with convex	X	
OnStar® – audio system includes GPS navigation & MyLink with 7 inch color touch screen		X
4G LTE WIFI – Built-in 4G LTE wifi connectivity with connection for up to 7 devices	X	
Power – 224 kW/323 HP	X	
Radio – Chevy MyLink radio with navigation, AM/FM stereo, CD player & touch screen navigation	X	
Receiver – Class IV	X	
Stability program - Adaptive (accounts for load)	X	
Theft deterrent system	X	
Tilt steering	X	
Tire storage – rear storage area	X	
Tires – LT245/76R16 black wall	X	
Torque – 504 Nm/373 lb.-ft.	X	
Transmission – automatic 6-speed heavy duty	X	
Wheels – 16" aluminum polished with steel spare		X
Window operation – power; front doors only	X	
Wiring harness for towing – 4-way & 7-way connector	X	

Roadtrek Motorhomes Inc. reserves the right to make changes at any time, without notice, in colors, materials, equipment, specifications and models. This information is intended as a guide only; please visit www.roadtrek.com for a complete list of specifications and options. Some motorhomes may be shown with equipment that is optional. Accessories shown in the photography are not included.

Find Your Roadtrek



www.roadtrek.com

Connect With Us



facebook.com/roadtrek



twitter.com/roadtrekmh



youtube.com/roadtrekmotorhomes



ROADTREK

Your destination awaits

Roadtrek Motorhomes Inc. 100 Shirley Avenue, Kitchener, ON Canada N2B 2E1 | Toll-free: 1.888.ROADTREK (762-3873) | Phone: 519.745.1169 | Fax: 519.745.1160