

2016 VILANO 365RL | Mocha Cabinetry & Espresso Interior



2016 Vilano Features

LIVING AREA

- Full Profile Ceiling throughout
- Full Overlay Hardwood Cabinetry and Faceframes
- Hardwood Slide-out Fascia throughout
- Hardwood Window Valances throughout
- 8'0" Main Floor Slideout Boxes
- Multiplex Wiring System
- Whisper Quiet A/C System
- Recessed LED Ceiling Lighting throughout
- Roller Shades (Night)
- Dimming Function on Bedroom and Living Room Lighting
- Furniture Made in the U.S.A.

BEDROOM

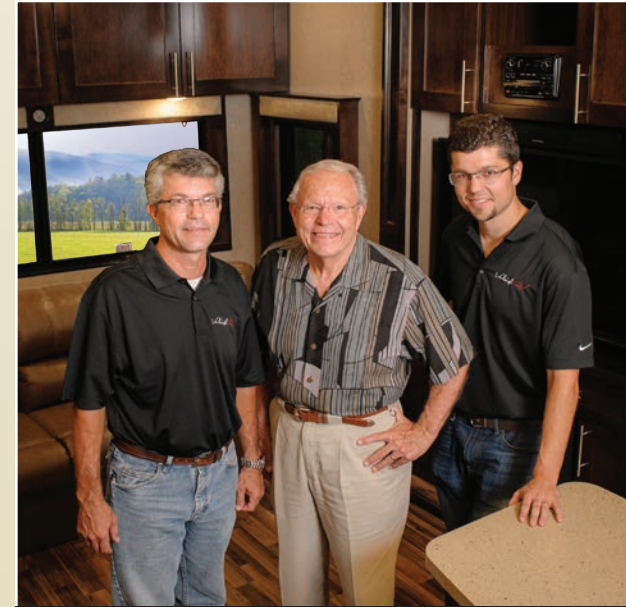
- Memory Foam King Mattress
- Dual USB Ports in Nightstands
- Solid Vinyl Flooring throughout Bedroom
- Hardwood Window Valances
- Residential Hardwood Headboard
- Hardwood 6 Drawer Dresser
- Full Sized Wardrobe with Motion Sensored Lighting
- Side-by-Side Washer Dryer Prep
- Full-Sized Underbed Storage Area

KITCHEN

- Solid Surface Kitchen Countertops
- Solid Surface Kitchen Sink and Range Covers
- Residential Kitchen Faucet w/pull down
- Stainless Steel Microwave and Oven
- 18 Cu. Ft. French Door Refrigerator
- Hardwood Dinette Table and Chairs
- Oversized 70/30 Stainless Steel Sink
- Galley Air Vent in Ceiling
- Hardwood Ceiling Décor Package with Recessed LED Lighting
- Oversized Pantry with Motion Sensored Lighting

HEATING AND COOLING

- Dual Low-Pro 15K BTU A/C's standard
- Prewire for 3rd 15K BTU A/C with Triple Zone Thermostat
- 35K BTU Furnace
- 5K BTU Electric Fireplace
- R-45 Floor and Roof Insulation
- R-11 Sidewall Insulation
- Whisper Quiet A/C System
- Fully Enclosed and Heated Underbelly with Heat Return
- 12V Electric Tank Heaters
- 10 Gal. Gas/Electric Hot Water Heater



LEFT to RIGHT
Van, Bob and Leigh Tiffin

We understand that you have many options to consider when purchasing a new RV and we thank you for taking the time to consider ours. Our family has been in the RV manufacturing industry for over 40 years. The Vanleigh team gets to work well before dawn every morning with one goal in mind, to create the best built product in the marketplace. We believe in building a product that we would want to RV in, whether it's for a weekend getaway or a year-long hiatus. That's why every Vanleigh RV is made knowing that our customer's journey is their home.

YOUR LOCAL VANLEIGH RV DEALER:

HOME ENTERTAINMENT

- 50" LED TV in Living Area
- 5K BTU Residential Fire Place
- Sound Bar with Surround Sound in Living Area
- Entertainment Center with Bluetooth, DVD, Aux Controls
- Exterior Speakers
- 32" LED Bedroom TV
- PreWire for Solar Panels
- Digital Non-Crank Antennae

EXTERIOR AND CONSTRUCTION

- High Gloss Gel Coated Fiberglass Exterior
- Tubular Aluminum Framed Sidewalls
- 12V Electric Dump Gates for Black and Gray Tank with Manual Override
- 16" on Center Tubular Aluminum Floor
- 16" on Center Welded Aluminum Roof Structure
- Framed, Laminated, and Insulated Slide Box Floor and Ceilings
- Laminated Slide Box End Walls
- Aluminum A/C Boxes Welded to Frame
- Roof Backer for Crown Mold
- Tubular Aluminum Upper Support Wall
- Dual Copper Water Manifolds
- Powdercoated Aluminum Wet-Bay
- LED Exterior Lighting System
- Windows Framed Out in Tubular Aluminum

OPTIONAL EQUIPMENT

- Goodyear "G" Rated Tires
- Generator Prep
- Pre Wire for Traveler Satellite
- Residential Dishwasher (N/A on 325RL)
- 3rd 15K BTU Low Profile A/C (N/A on 325RL)
- Slide Topper Awning Package
- Dirt Devil Central Vac System
- Dual Pane Windows
- Convection Microwave
- Programmable Combination Safe
- Heat Pump
- MORryde Rubber Pinbox

Vanleigh RV
LET THE JOURNEY BE YOUR HOME

26 Industrial Drive | Burnsville, MS 38833
Phone 662-612-4040 | Fax 662-655-0913

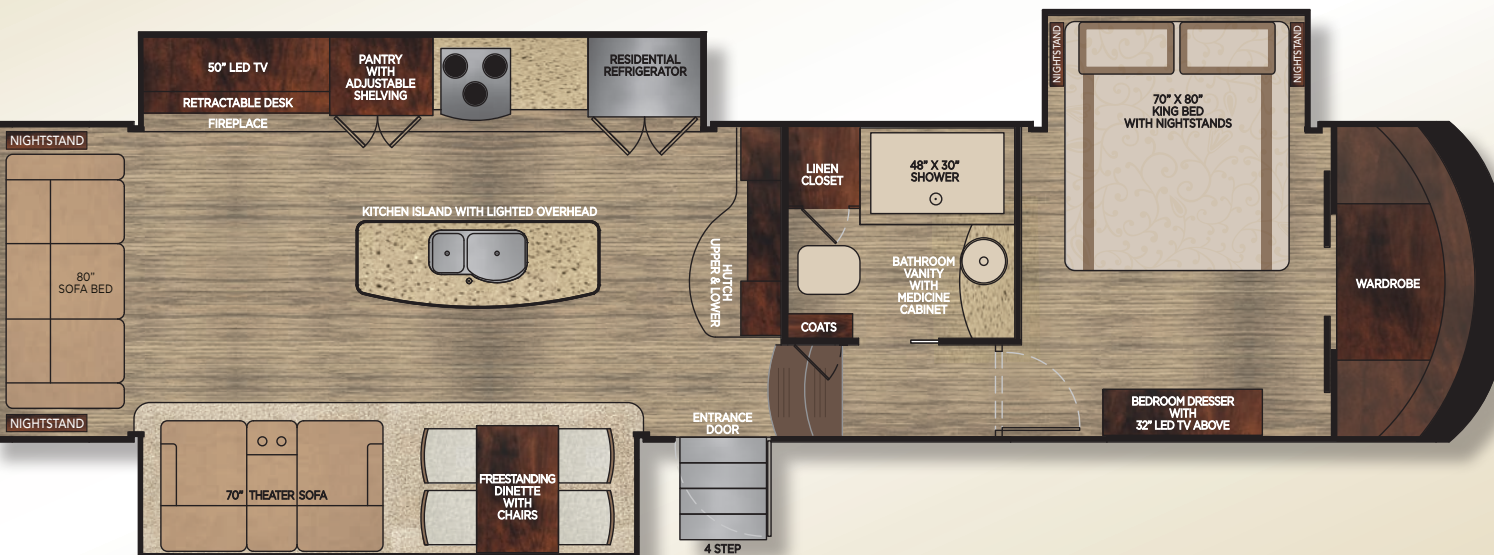


customer@vanleighrv.com
www.vanleighrv.com



2016 VILANO

2016 VILANO 365RL FLOORPLAN



2016 VILANO 365RL

GVWR 16,000
Dry Weight 13,000 *
Cargo Carrying 3,000
Width 101"
Height 12' 11" **
Length 38' 11" ***
Fresh Water Cap. 54 gal
Grey Water Cap. 90 gal
Black Water Cap. 45 gal
Water Heater 10 gal
Furnace 35K BTU
LP Cap. 60 lbs

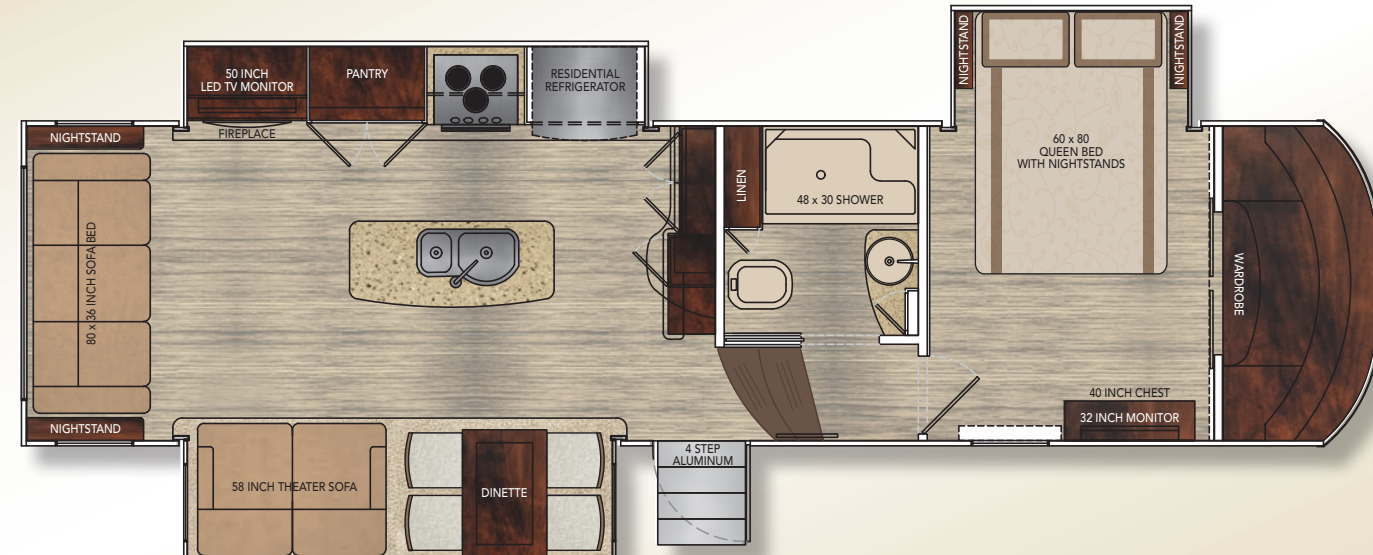
*unloaded and based off of an average / ** to top of A/C's / *** from pinbox to rear ladder / based on standard build, no options



2016 VILANO 325RL | English Chestnut Cabinetry & Pebble Interior



2016 VILANO 325RL FLOORPLAN



2016 VILANO 325RL

GVWR 16,000
Dry Weight 12,400 *
Cargo Carrying 3,600
Width 101"
Height 12' 11" **
Length 34' 7" ***
Fresh Water Cap. 54 gal
Grey Water Cap. 48 gal
Black Water Cap. 45 gal
Water Heater 10 gal
Furnace 35K BTU
LP Cap. 60 lbs

*unloaded and based off of an average / ** to top of A/C's / *** from pinbox to rear ladder / based on standard build, no options

