

KING AIRE

2016 LUXURY MOTOR COACH



WHEN YOU KNOW THE DIFFERENCE SM

LUXURY BEYOND COMPARE

In an industry where many forego new frontiers in favor of “the same old story,” Newmar stands above the duplicators and corner-cutters, choosing innovation over imitation. Nowhere is this approach more apparent than with the 2016 King Aire. Ignoring the confines of convention, King Aire is outfitted with leading-edge technology and ultra-premium amenities designed to represent the world’s best.

Because leading the way means never stopping short of delivering what’s next.



KING AIRE



KING AIRE

RIDE LIKE ROYALTY

Spartan® Tag Axle K3 GT chassis with 600 HP Cummins® ISX diesel engine

11-speaker, 360-watt custom-tuned JBL® premium cockpit audio system

Exclusive interior décors featuring fabrics from the Ralph Lauren® Home Collection

Rear-bath Cathedral Ceiling featured on all bath-and-a-half models



WHEN YOU KNOW THE DIFFERENCE SM





Ralph Lauren® Arundal Décor Style With Ginger Glazed High Gloss Cherry Cabinetry - Floor Plan 4519

WELCOME TO WORLD CLASS

Offering stunning interior décor options featuring fabrics from the Ralph Lauren® Home Collection, the 2016 King Aire is dressed to impress. Featuring the latest in entertainment technology, King Aire joins a 49" Sony® 4K Ultra HD TV and Blu-ray/DVD player with a Bose® CineMate home theater system. Seating is comprised of new Villa® furniture featuring Pompeii leather by Ultrafabrics®, including a power jackknife sofa with select floor plans.



Driver & Passenger Seats with Optional Massage Feature





Available Combination Desk/Dinette with Buffet Space



Polished Solid-Surface Countertops with Convection Microwave and Recessed Induction Cooktop



A FIVE-STAR ARRANGEMENT

Experience luxury travel at its finest aboard the 2016 King Aire. Taking things a step further is More Floor, which brings expertly placed porcelain tile flooring to the flat-floor slide-outs in the kitchen, living area and master bedroom. Even the appliances are a sight to behold, led by a stainless steel Whirlpool® residential

refrigerator and drawer-mounted dishwasher. Artisan-crafted high-gloss cabinetry provides more storage than ever before, while an under-mounted double glass sink with Delta Touch₂0® faucet adds high-end style and convenience.

New Glass and Marble Backsplash





King-Size Sleep Number® Adjustable Bed with Fabrics From Ralph Lauren®



LIVE LIKE A KING. SLEEP LIKE A BABY.

With the 2016 King Aire, each pause in your journey is a chance to get lost in the good life. A King-size Sleep Number® adjustable bed is decorated with fabrics from Ralph Lauren® and features Newmar's first-ever headboard window, equipped with sliding panels that let in as much light as you prefer.



Of course, King Aire's master bedroom also hosts some of the world's most intuitive entertainment technology, beginning with a second 49" Sony® 4K Ultra HD TV. Show-quality sound comes via a Bose® Solo surround sound system with Bluetooth® capability, while a handheld Sony® tablet puts you in control of climate settings, interior lighting and more.

SONY®

Full Wardrobe with Cedar Paneling and Recessed Storage Shelves



HAVE IT ALL AND THEN SOME

Every moment you spend inside the 2016 King Aire is an opportunity to feel pampered, and the master bathroom is no exception. An available 50" x 34" shower is the largest ever offered in a Newmar product. All showers are glass enclosed and fit with full tile, a teak fold down seat and a Fresca® shower panel with massage sprays and foot wash.

A magnificent vanity with his and hers vessel sinks and a backlit full-width custom mirror is crafted to accommodate, as is the full wardrobe along the rear wall. A generously appointed mid-cabin half-bath is perfect for guests, while the Whirlpool® stacked washer and 220-volt dryer makes laundry duty a breeze.



Mid-Cabin Half-Bath



Polished Solid-Surface Twin-Sink Vanity



Available 50"x34" Glass-Enclosed Full-Tile Shower



Girard Nova® Power Side Awnings with Wind Sensor and LED Lighting



EXCELLENCE FROM TOP TO BOTTOM

Built atop a trussed, torque-box structured Spartan® K3 GT tag axle chassis, the 2016 King Aire features one of the tallest basements in the industry, which includes a Dometic® refrigerator and freezer. Further enhanced by an HWH® hydraulic leveling system and Newmar's Comfort Drive™ Steering System with Passive Steer tag axle technology, King Aire is unlike any coach you've ever experienced.



Perfect for outdoor celebrations is the standard exterior entertainment center, where a 40" Sony® LED TV teams with a Bluetooth®-compatible JBL® soundbar. What's more, an available power washer helps maintain King Aire's Full-Paint Masterpiece™ Finish and Alcoa Dura-Bright® aluminum wheels.



EXTERIOR DÉCOR



GABLE EXTERIOR



ROYAL MIST EXTERIOR



MARLOWE EXTERIOR



SHIRE EXTERIOR

INTERIOR DÉCOR RALPH LAUREN HOME COLLECTION

Rich in detail and woven in the finest mills, Ralph Lauren fabrics represent the world's finest textiles.



ARUNDAL INTERIOR

Rich textures and shimmering metallic hues come together in this elegant, inviting décor



CAMBER INTERIOR

Textures woven in a camel and chocolate palette create an ornate yet welcoming atmosphere



BALMORAL INTERIOR

This fine selection emphasizes traditional hues that transcend fashion trends in favor of timeless elegance



DURHAM INTERIOR

This detailed pattern features sophisticated textures in a rich charcoal palette for a classic look and feel

WOOD OPTIONS



CASHMERE RIFT
OAK HIGH GLOSS



HAVANA RIFT OAK
HIGH GLOSS

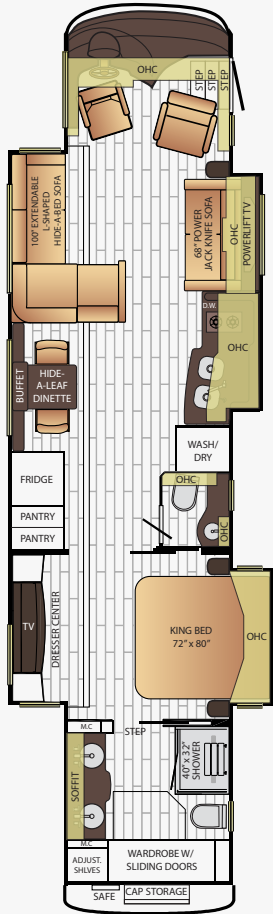


GINGER GLAZED
CHERRY HIGH GLOSS



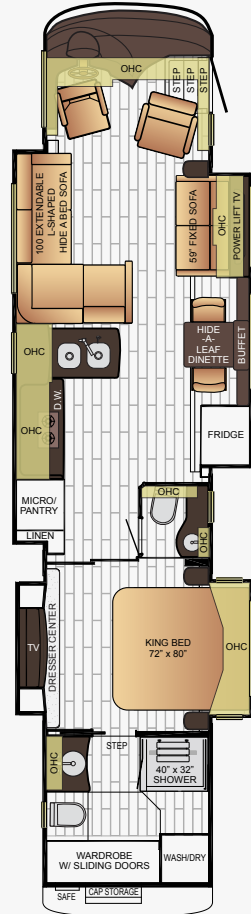
SABLE MAPLE
HIGH GLOSS

FLOOR PLANS



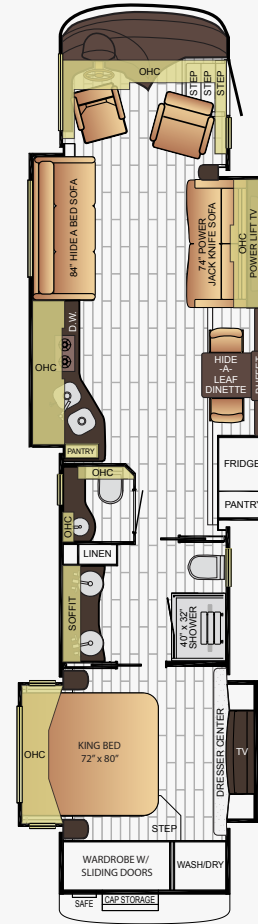
4503

App. Overall Length	44'11"
Width	101.5"
App. Overall Height	13'04"
Interior Width	95.5"
Interior Height	84"
Grey Tank	80 gal.
Sewage Tank	60 gal.
Water Tank	140 gal.
Propane Tank	22 gal.
Furnace	50,000 btu



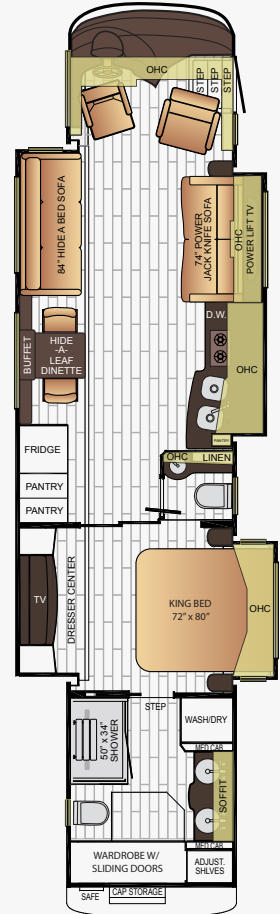
4507

App. Overall Length	44'11"
Width	101.5"
App. Overall Height	13'04"
Interior Width	95.5"
Interior Height	84"
Grey Tank	80 gal.
Sewage Tank	60 gal.
Water Tank	140 gal.
Propane Tank	22 gal.
Furnace	50,000 btu



4518

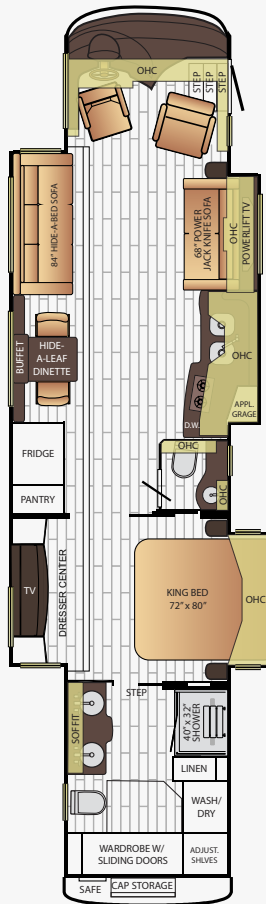
App. Overall Length	44'11"
Width	101.5"
App. Overall Height	13'04"
Interior Width	95.5"
Interior Height	84"
Grey Tank	80 gal.
Sewage Tank	60 gal.
Water Tank	140 gal.
Propane Tank	22 gal.
Furnace	50,000 btu



FLOOR PLANS

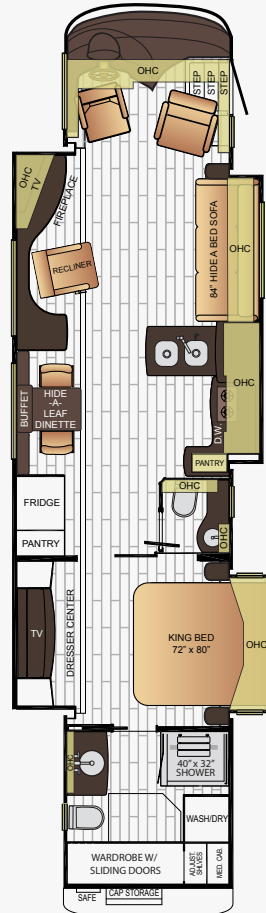
4519

App. Overall Length	44'11"
Width	101.5"
App. Overall Height	13'04"
Interior Width	95.5"
Interior Height	84"
Grey Tank	80 gal.
Sewage Tank	60 gal.
Water Tank	140 gal.
Propane Tank	22 gal.
Furnace	50,000 btu



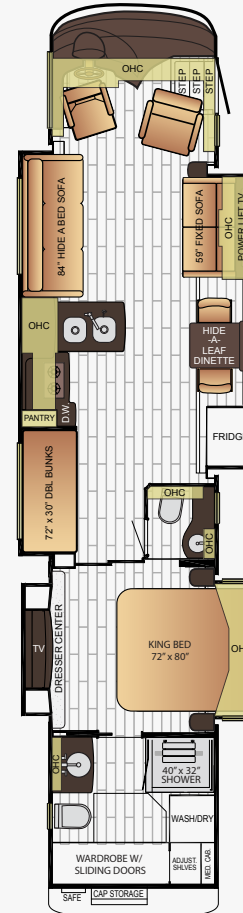
4553

App. Overall Length	44'11"
Width	101.5"
App. Overall Height	13'04"
Interior Width	95.5"
Interior Height	84"
Grey Tank	80 gal.
Sewage Tank	60 gal.
Water Tank	140 gal.
Propane Tank	22 gal.
Furnace	50,000 btu



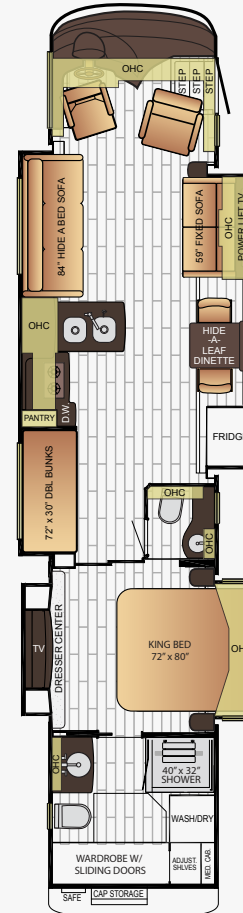
4565

App. Overall Length	44'11"
Width	101.5"
App. Overall Height	13'04"
Interior Width	95.5"
Interior Height	84"
Grey Tank	80 gal.
Sewage Tank	60 gal.
Water Tank	140 gal.
Propane Tank	22 gal.
Furnace	50,000 btu



4598

App. Overall Length	44'11"
Width	101.5"
App. Overall Height	13'04"
Interior Width	95.5"
Interior Height	84"
Grey Tank	80 gal.
Sewage Tank	60 gal.
Water Tank	140 gal.
Propane Tank	22 gal.
Furnace	50,000 btu



CONSTRUCTION & CHASSIS SPECIFICATIONS

King Aire, a high-performing motor coach, has a Spartan® K3 GT tag axle chassis with an independent front suspension and an HWH® hydraulic leveling system. King Aire is built using tubular truss web frames and substructure beams that form a foundation stable enough to allow extensive pass-through storage.

This allows King Aire to expand beyond its chassis footprint, creating extra living space. Its Cummins® ISX diesel engine produces 600 HP, delivering incredible maneuverability and power, even on steep inclines.

Floor Plan	Engine HP	Axle Ratio	Fuel Cap.	Wheel Base	Front GAWR*	Rear GAWR*	Tag GAWR*	GVWR*	GCWR*	App. UVW	App. NCC
4503	600	4.30	200 gal.	292+TAG	20,000 lb.	20,000 lb.	14,000 lb.	54,000 lb.	74,000 lb.	47,000 lb.	7,000 lb.
4507	600	4.30	200 gal.	292+TAG	20,000 lb.	20,000 lb.	14,000 lb.	54,000 lb.	74,000 lb.	46,800 lb.	7,200 lb.
4518	600	4.30	200 gal.	292+TAG	20,000 lb.	20,000 lb.	14,000 lb.	54,000 lb.	74,000 lb.	46,900 lb.	7,100 lb.
4519	600	4.30	200 gal.	292+TAG	20,000 lb.	20,000 lb.	14,000 lb.	54,000 lb.	74,000 lb.	47,000 lb.	7,000 lb.
4553	600	4.30	200 gal.	292+TAG	20,000 lb.	20,000 lb.	14,000 lb.	54,000 lb.	74,000 lb.	47,000 lb.	7,000 lb.
4565	600	4.30	200 gal.	292+TAG	20,000 lb.	20,000 lb.	14,000 lb.	54,000 lb.	74,000 lb.	47,100 lb.	6,900 lb.
4598	600	4.30	200 gal.	292+TAG	20,000 lb.	20,000 lb.	14,000 lb.	54,000 lb.	74,000 lb.	46,300 lb.	7,700 lb.

Lengths, heights, widths and dry weights are approximate. Weight will vary based on optional equipment added to the above base weight.

GAWR: Gross Axle Weight Rating is the maximum permissible weight for an axle.

GVWR: Gross Vehicle Weight Rating is the maximum permissible weight for a fully loaded motor coach.

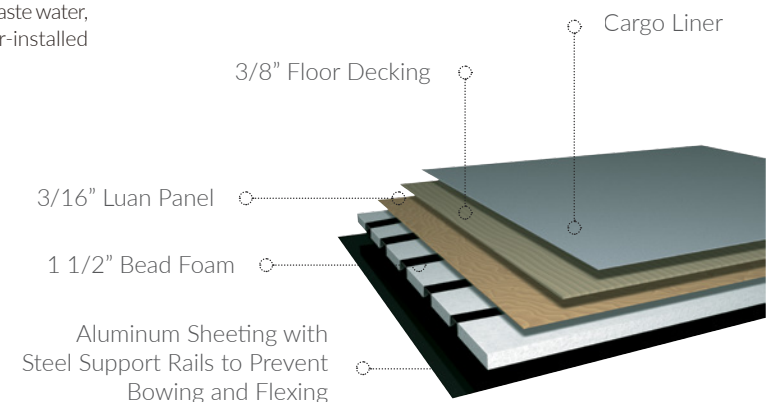
GCWR: Gross Combination Weight Rating is the value specified by the manufacturer of the vehicle as the maximum allowable loaded weight of this motor coach and any towed trailer or towed vehicle.

UVW: Unloaded Vehicle Weight is the weight of this motor coach as built at the factory with full fuel, engine oil and coolants. Does not include cargo, fresh water, propane gas or dealer-installed accessories.

NCC: Net Carrying Capacity is the maximum weight of all occupants, including the driver, personal belongings, food, fresh water, waste water, propane gas, tools, tongue weight of towed vehicle, dealer-installed accessories, etc., that can be carried by the motor coach.

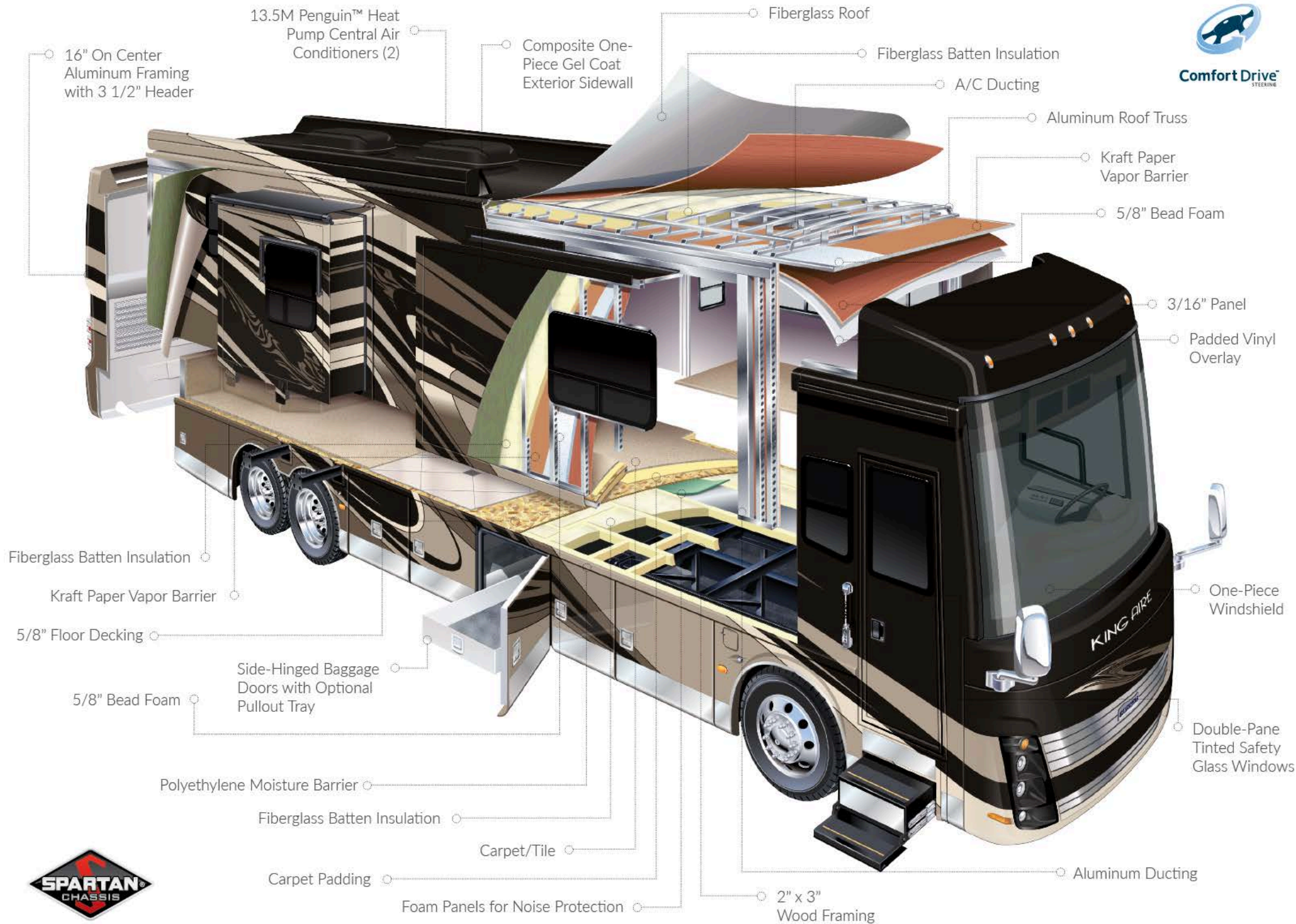
**Specifications supplied by the chassis manufacturer.*

King Aire R-Values:
Roof R-Value = 24
Sidewall R-Value = 11
Floor R-Value = 16
Basement R-Value = 4





Comfort Drive
STEERING



FEATURES & OPTIONS



CHASSIS FEATURES

Spartan® Passive Steer Tag Axle K3 GT Chassis with 600 HP Cummins® ISX Diesel Engine

Comfort Drive™ Steering With Adjustable Controls

Power Tilt & Telescoping VIP Smart Steering Column & Mirrors

Recessed Fuel Fills with Crossover to Fill from Either Side

Anti-Lock Braking System

In-Dash Electronic Chassis Information Center

Air Leveling Control System

Alcoa Dura-Bright® Aluminum Wheels

Memory Settings for Driver Seat Pedals, Steering Column & Mirrors

Tire Pressure Monitoring System

Trip Travel Information

OPTIONS

Vorad® Adaptive Cruise System



AIR CONDITIONING AND HEATING

Three 15M Penguin™ Heat Pump Air Conditioners with Remote-Control Thermostat

Hydronic Zone Diesel Heating System with Continuous Hot Water

Dash Heater and Air Conditioner

Air Conditioning Drainage System On Roof

Driver and Passenger Dash Overhead Ventilation System

OPTIONS

Electric Radiant Heat Installed Below Floor Tile



APPLIANCES

Convection Microwave with Recessed Two-Burner Gas Cooktop

Countertop-Matching Flush Gas Cooktop Cover

Whirlpool® Stainless Steel 19.7 Cf. Refrigerator with Water Dispenser

Whirlpool® Two-Piece Stacked Washer & 220-Volt Dryer

Dometic® 3.77 Cf. Freezer on Pullout Tray in Exterior Baggage Compartment

Fireplace in Living Area*

Dishwasher in a Drawer with Stainless Steel Front Located Below Cooktop

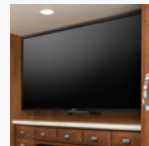
Central Vacuum with Tool Kit

OPTIONS

All Electric, Flush-Mount Induction Cooktop, 8 Extra Batteries

All Electric, Flush-Mount Kenyon® Cooktop, 8 Extra Batteries

Whirlpool® Two-Piece Washer/Dryer



AUDIO, VIDEO AND ACCESSORIES

Sony® 49" LED with Televator TV in Living Area*

Bose® CineMate Home Theater System

Bose® Solo Surround with Bluetooth in Bedroom

Dash Radio with Touch Screen Navigation, Dual Monitors, Harman/JBL® 360-Watt Sound System & Subwoofer

Winegard® Rayzar Automatic Digital TV Antenna

Sony® Tablet That Controls AV Equipment, Lights, Shades, Keyless Entry & Silverleaf App

Infra-Red Repeater System to Operate Audio/Video Components

Wireless Router

Sirius® Satellite Radio Capability with Antenna (Does Not Include Monthly Subscription)

Video Matrix Valet Monitor System

Exterior Entertainment Center in Storage Compartment with Sony 40" LED TV & Soundbar
Two 11" LCD Flip-Down Monitors and DVD Players with Headphones – One at Each Bunk*

Sony® 49" Ultra High Definition TV with Blu-ray/DVD Player in Living Area and Bedroom

OPTIONS

Sony® 40" LED TV in Front Overhead

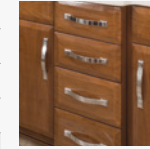
40" Exterior TV in Sidewall and Stainless Steel Storage Rack in Storage Compartment

Extra Monitor for Navigation on Passenger Side

Remote-Control Color Rearview Camera

Security System

KVH® In-Motion Dome-Shaped Satellite Dish



CABINETS AND FURNITURE

Sable Maple Cabinetry with High-Gloss Finish & Full Overlay Doors

High-Polish Solid-Surface Countertop in Kitchen with Undermounted Glass Sink

High-Polish Solid-Surface Countertop in Bathroom and Bedroom

Vessel Sinks in Master Bathroom

Pompeii Collection by Ultrafabrics Sofa and Front Seats with Integrated Seat Belts

Six-Way Power Adjustable Heated & Cooled Driver/Passenger Seats with Power Lumbar Support, Power Recline and Power Footrest

Passenger Seat Work Station

Sleep Number® Premier Radius Corner Air Mattress

Power Jackknife Sofa*

OPTIONS

Cashmere Rift Oak Cabinets with High Gloss Finish

Ginger Glazed Cherry Cabinets with High Gloss Finish

Havana Rift Oak Cabinets with High Gloss Finish

Euro-Booth Dinette

Extenda Flex Dinette

Combination Desk/Dinette with Buffet Table, 2 Fixed and 2 Folding Chairs

Door-Side Fold & Tumble Sofa with Air Mattress, Off-Door Side Power Extenda L-Sofa

Door-Side Fold & Tumble Sofa with Air Mattress, Off-Door Side Recliners with Lampstand

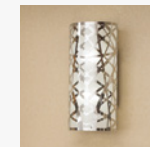
Door-Side Televator TV, Two Recliners with Lampstand on Off-Door Side

Sofa/Euro-Booth Dinette Ensemble

Sofa/U-Dinette Ensemble

U-Dinette with Power Adjustable Table

Massage Feature for Driver/Passenger Seats



ELECTRICAL FEATURES

12.5 Kw Onan® Diesel Generator with Auto Changeover on Hydraulic Slide-out Tray

50-Amp Electrical Service with Flexible Cord and Automatic Transfer Switch

12-Volt Auxiliary Receptor on Dashboard

Eight 6-Volt AGM House Batteries on Pullout Tray

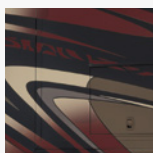
10-Watt Solar Panel to Charge Chassis Battery

FEATURES & OPTIONS

- Two 3000-Watt Inverters
- Accent Lights in Feature Ceiling, Slide-out Fascia Trim, Lambrequins, Kitchen, Bed Base and Underneath Dash
- Automatic Generator Start on Low Battery or Temperature Setting
- Battery Disconnect Switch for House Battery
- Emergency Engine Start Switch
- Interior Courtesy Lighting
- Engine Block Heater
- Exterior Security Lights
- High-Power USB Charger at Dinette & Bedroom Nightstand
- Electrical-Wireless Charging Mats at Dash and on Night Stands
- LED Lighting in Exterior Storage Compartments on Automatic Switches
- LED Lighting Inside Pullout Pantry & Bathroom Lavatory Bases
- Power Rewind Reel with 50' Cord
- Secondary Multiplex Touch Screen in Bedroom
- Silverleaf Multiplex Electrical Wiring System
- Solar Prep Wire from Roof to House Battery Compartment
- LED Docking Lights with Stainless Steel Trim
- Exterior LED Accent Lights above Rear Tow Guard, Below Door-Side Slide-outs & Exterior Perimeter of Unit
- Rear Hitch Docking Light
- Backlight Vanity Mirror in Floor Plans with Double Vessel Sinks

OPTIONS

- Four Sunforce® Flexible 95-Watt Solar Panels on Roof
- Roof-Mounted Spotlight



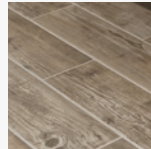
EXTERIOR FEATURES

- Full-Paint Masterpiece Finish™ with Cut & Buff and Nano Shield Protection on Front Cap
- Convex Chrome Ext.Mirrors with Remote Control, Defrost, Turn Signals & Side-View Cameras
- Chrome Power Baggage Door Locks, Keyless Entry Door with Touch Pad & Doorbell
- Rear Protective Tow Guard
- Stainless Steel Exterior Trim Pieces and Kick Panel at Entrance Door
- Undercoating
- Lit Exterior Storage Compartments with Cargo Liner
- Dual-Latched Front Entrance Door with Power Flush Stepwell Cover
- Automatic Step for Entrance Door
- Holding Tank Levels Displayed in Exterior Water Works Compartment
- Hydraulic Leveling Jacks

- Large Storage Tray
- Two Power Sliding Storage Trays
- Rear Hitch for Towing Car
- Power Door Lift for Engine Access
- Baggage Door Alert System When Engine is Running

OPTIONS

- Stainless Steel Trim Kit for Exterior Baggage Doors
- Power Washer with 50' Hose Reel Connected to Hot Water Line*

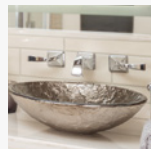


INTERIOR FEATURES

- Exclusive Ralph Lauren® Fabrics
- Designer Feature Ceiling
- Cathedral Ceiling with Added Height to Rear Bathroom Floor Plans*
- Auto Motion Power Shades at Windshield, Driver & Passenger Side Windows
- Auto Motion Power Window Shades and Lambrequins
- Tile Floor in Kitchen, Bathroom, Bedroom and Living Areas
- Interior Assist Handle at Main Entry Door
- Shoe Storage Shelves Recessed into Rear Cap Wardrobe
- Safe Located in Bedroom Wardrobe
- 10 Bc Fire Extinguisher, Smoke Detector and Carbon Monoxide Detector

OPTIONS

- Silhouette Power Window Shades



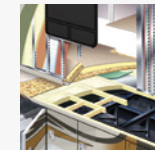
PLUMBING AND BATH FEATURES

- Demand Water System
- Touch Kitchen Faucet
- Tiled Shower Pan with Full Decorative Tile Walls
- MANABLOC® Plumbing System
- Power Water Hose Reel
- Dometic® Concerto Electric Flush or Macerator Stool*
- Exterior Convenience Station with Hot/Cold Water, Soap & Towel Dispenser
- Sewage & Grey Holding Tank Rinse
- Automatic Fill For Fresh Water Tank
- Fold-Down Shower Seat

- Kitchen Faucet with Dedicated U/V Filter
- Power Dump Valves for Holding Tanks

OPTIONS

- Assist Handle in Shower
- Hot Water Line to Generator Area
- Black China Bowl Stools
- RV Sani-Con System



CONSTRUCTION FEATURES

- Fiberglass Roof with Walkable Decking & Integrated Gutter Rail
- Gel Coated Fiberglass Exterior Sidewalls, Front and Rear Caps
- Aluminum-Frame Sidewalls & Roof Construction, 16" on Center
- 5/8" Foam Insulation Laminated in Sidewalls & Ceiling
- Mechanical Lock Arms on Non Flat Floor Slide-Out Rooms
- Polar Pak R19 Batten Insulation in Roof



WINDOWS, AWNINGS AND VENTS

- One-Piece Tinted Windshield
- Frameless Double-Pane Tinted Safety-Glass Windows
- Fan-Tastic® Vent with Rain Sensor in Kitchen and Bathroom
- Two Girard Nova Side Awnings with Wind Sensor, Remote Control and LED Lights
- Girard Entrance Door Awning with LED Lights, Slide-Out Covers & Power Window Awnings
- Window Above Bed Concealed Behind Sliding Doors
- Skylight Above Shower*
- Driver Side Power Window
- Egress Door in Rear Bathroom*
- Hardwood Louvered Cover on Fantastic-Vent in Kitchen and Bathroom Areas

*Check With Dealership On Floor Plan Availability



OUR PARTNERS

Where the Finest Names in Quality and Performance are Along for the Ride

To ensure that you experience only the best in comfort, control and unsurpassed convenience in our incomparable family of Luxury Coaches, Newmar partners with the most prestigious names in mobile lifestyle, entertainment and technology. These brands

are leaders in their fields and legends in providing customers with new, unsurpassed levels of quality and reliability. Best-in-class performance from names you can trust. At Newmar, that's our difference. And our promise.



THE MILLER WAY

*Industry-Leading Quality,
From Our Family to Yours*

For the Miller family, RVs are what we build because RVing is what we love. To us, the RV lifestyle is more than our business – it's our passion. Our customers choose Newmar time and time again because they trust in us, our products and our people.

I myself am proud to own a Dutch Star designed, assembled and backed by artisans, engineers and service specialists who represent the best our industry has to offer. Men and women who have spent an average of 13 years as members of the Newmar family. Without them, The Newmar Difference simply wouldn't exist.

Matt Miller
Newmar President, lifelong motor coach enthusiast

KING AIRE

NEWMAR EXPRESS LIMITED WARRANTY

Every King Aire diesel motor coach is backed by Newmar's one-year limited warranty/unlimited miles. Ask your Newmar dealer for details.

LIMITED FIVE-YEAR STRUCTURAL WARRANTY

If any part of your Newmar recreational vehicle superstructure (which is the steel/aluminum structure of the sidewall, roof or frame) fails to perform properly within five years from the date of purchase because of faulty workmanship or material supplied by Newmar, it will be repaired without charge for either parts or labor by Newmar. This structural warranty is available only to the original purchaser and is non-transferable.

Some features in our literature are optional. Colors and finishes are photographic representations. The actual materials may look different. Prices, specifications and floor plans are subject to change at Newmar's discretion, without prior notice or obligation. Please see your dealer for actual samples and specifications.



WHEN YOU KNOW THE DIFFERENCE SM