

WHY BUY DESTINATION



STANDARD



MERLOT



WATERFALL



SANDSTONE

KEY FEATURES

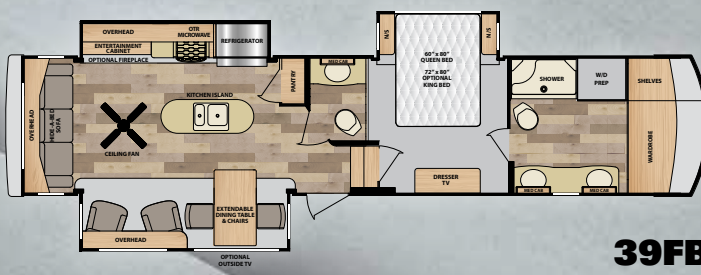
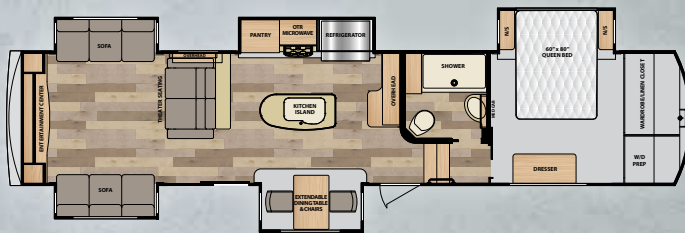
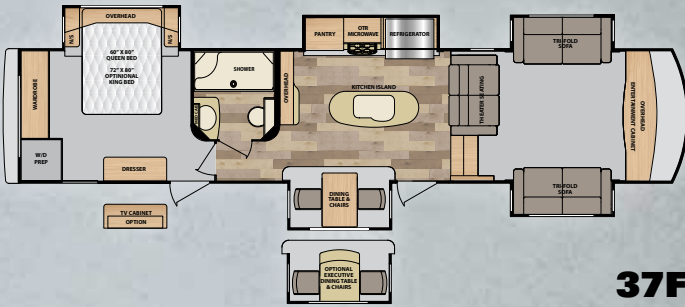
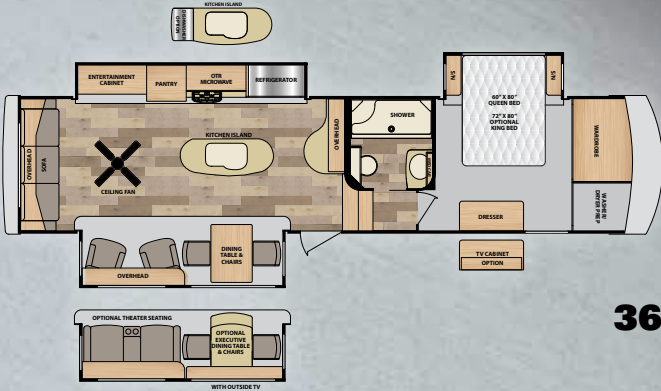
- Drop Frame Chassis
- Hydraulic Front Jacks
- Power Rear Stabilizer Jacks
- Trail Air Rubber Suspension
- Aluminum Wheels
- Undermount Spare Tire and Carrier
- Recessed 3 Burner Range w/21" Oven
- Hard Surface Range Cover
- 30" Microwave
- 20 cu ft Residential Refrigerator
- 1200 Watt Inverter
- 10 gal DSI Gas Electric Water Heater
- 15M BTU Tru Air Cooling System
- Bedroom A/C Prep
- Washer/Dryer Prep
- 50 AMP Service
- High Gloss Gel Coat Fiberglass Walls
- Painted Fiberglass Front Cap
- Radius Interior Ceiling
- Hydraulic Main Floor Slides
- 30" x 78" Entry Door w/ Vented Window
- Dark Tinted Frameless Windows
- Electric Awning w/ LED Lights
- LED Interior Lights, Ceiling Fan w/ Light (select models)
- Hard Wood Cherry Cabinet Stiles
- Free Standing Table and Two Chairs
- Hard Surface Galley Countertops
- Stainless Steel Sink
- Large One Piece Fiberglass Shower
- 60" x 80" Mattress
- Large Screen LED TV
- Correct Track Alignment System
- Everpedic Memory Foam Mattress

Premium Travel Trailers & Fifth Wheels

WINNEBAGO
TOWABLES™

FLOORPLANS

SPECIFICATIONS



| | 36RL | 37FL | 37RD | 39FB |
|---------------------------------------|--------------|------|--------------|--------------|
| Exterior Length (Pin to Rear Bumper) | 38' 0" | | 41' 0" | 40' 5" |
| Exterior Height (ft.) (Including A/C) | 13' 3" | | 13' 3" | 13' 3" |
| Exterior Width (ft.) (Fenders/Body) | 8' 4" | | 8' 4" | 8' 4" |
| Interior Height (ft.) | 8' 9" | | 8' 9" | 8' 9" |
| GVWR (lbs.) | 15,500 | | 15,500 | 15,500 |
| Dry Weight (lbs.) | 12,320 | | 13,120 | 12,940 |
| Dry Hitch Weight (lbs.) | 2,820 | | 2,560 | 2,700 |
| Axles (lbs.) | 2@7,000 | | 2@7,000 | 2@7,000 |
| GAWR (lbs.) | 7,000 | | 7,000 | 7,000 |
| Tire Size | ST235/80R16E | | ST235/80R16E | ST235/80R16E |
| Fresh Water (Tank Only) (gal.) | 100 | | 100 | 100 |
| Black Tank Capacity (gal.) | 28 | | 28 | 28 |
| Grey Tank Capacity (gal.) | 60 | | 60 | 60 |
| LP Capacity (lbs.) | 60 | | 60 | 60 |
| LP Capacity with Upgrade (lbs.) | N/A | | N/A | N/A |
| Awning Length (ft.) | 13.5 | | 20 | 14 |
| Slide-outs | 3 | | 3 | 3 |
| Sleeps | | | | |
| Furnace (BTU) | 35,000 | | 35,000 | 35,000 |
| Water Heater (gal.) | 10 | | 10 | 10 |



Winnebago Towables
 201 14th Street, P.O. Box 2001
 Middlebury, IN 46540 (574) 825-5250
www.winnebagotowables.com

