

# WHY BUY VOYAGE



## KEY FEATURES

- 60" x 80" Mattress
- Double Door Gas/Electric Refer
- 6-Gal Gas/Electric DSI Water Heater
- Hi-Capacity Furnace
- 15" Radial Tires
- Range Cover
- Oven
- AV System w/AM/FM/CD/DVD/USB/SD and Bluetooth
- Swivel Rocker (where applicable)
- Outside Shower
- Black Tank Flush
- Exterior TV Connection
- Super-Lube Axles
- Digital TV Antenna
- Swing-Out Assist Handle
- Stabilizer Jacks
- Spare Tire/Undermount Carrier
- 13.5M BTU Roof Air
- Microwave
- 12V Patio Awning w/ LED Light
- Sink Cover
- 30# LP Bottles
- Tub Surround
- Leather Sofa
- LED Ceiling Lights
- Painted fiberglass Front Cap w/Integrated LED Lights
- Slam Latch Baggage Doors
- Roof Ladder
- Night Shades

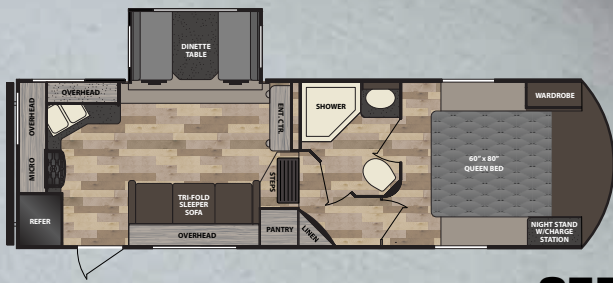


Premium Travel Trailers & Fifth Wheels

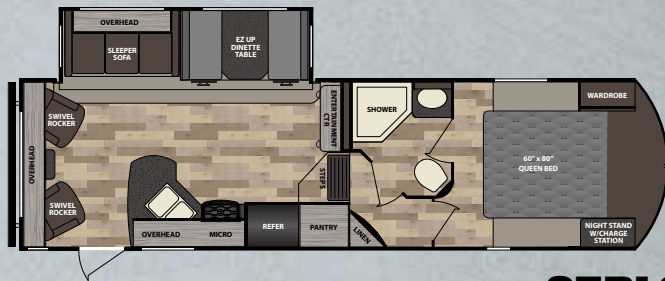


**WINNEBAGO**  
TOWABLES™

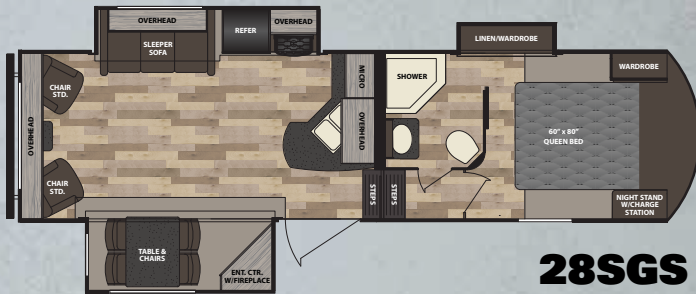
# FLOORPLANS



**25RKS**



**27RLS**



**28SGS**

# SPECIFICATIONS

|                                       | 25RKS        | 27RLS        | 28SGS        |
|---------------------------------------|--------------|--------------|--------------|
| Exterior Length (Pin to Rear Bumper)  | 27' 3"       | 29' 4"       | TBD          |
| Exterior Height (ft.) (Including A/C) | 11' 8"       | 11' 8"       | TBD          |
| Exterior Width (ft.) (Fenders/Body)   | 8' 0"        | 8' 0"        | TBD          |
| Interior Height (ft.)                 | 7' 11"       | 7' 11"       | TBD          |
| GVWR (lbs.)                           | 8,500        | 8,500        | TBD          |
| Dry Weight (lbs.)                     | 6,915        | 7,680        | TBD          |
| Dry Hitch Weight (lbs.)               | 820          | 1,100        | TBD          |
| Axles (lbs.)                          | 2@5,200      | 2@5,200      | 2@5,200      |
| GAWR (lbs.)                           | 5,080        | 5,080        | 5,080        |
| Tire Size                             | ST225/75R15D | ST225/75R15D | ST225/75R15D |
| Fresh Water (Tank Only) (gal.)        | 50           | 50           | TBD          |
| Black Tank Capacity (gal.)            | 25           | 25           | TBD          |
| Grey Tank Capacity (gal.)             | 51           | 51           | TBD          |
| LP Capacity (lbs.)                    | 60           | 60           | 60           |
| LP Capacity with Upgrade (lbs.)       | N/A          | N/A          | N/A          |
| Awning Length (ft.)                   | 17           | 14           | TBD          |
| Slide-outs                            | 1            | 1            | 3            |
| Sleeps                                | +6           | +6           | TBD          |
| Furnace (BTU)                         | 30,000       | 30,000       | TBD          |
| Water Heater (gal.)                   | 6            | 6            | TBD          |





**Automotive durability track tested!**

**NXG FRAME**  
*The Next Generation in RV Frame Technology*

The NXG Frame is a superior quality, highly engineered frame providing a strong, lightweight, consistent foundation.

**Key Features:**

- Constructed with HSLA - High Strength Low Alloy Prime Steel
- Common components are robotically welded for consistent quality
- All fastened components are joined with Huck® fasteners, providing consistent clamp load



**Winnebago Towables**  
 201 14th Street, P.O. Box 2001  
 Middlebury, IN 46540 (574) 825-5250  
[www.winnebagotowables.com](http://www.winnebagotowables.com)

2015 Winnebago of Indiana, LLC



# WHY BUY VOYAGE XLT



## KEY FEATURES

- Gel Coat Fiberglass Walls
- Tinted Windows
- Electric Front Jacks w/Snap Pins
- Power Stabilizer Jacks
- Power Awning w/LED
- Utilities Docking Station
- Battery Disconnect Switch
- Black Tank Flush
- 10 gal Gas/Elec. DSI Water Heater
- 50 Amp Service w/Detachable Power Cord
- 15M A/C
- Wire and Prep for 2nd A/C
- EZ-Lube Axles
- Equa-Flex Suspension
- 16" Radial Tires and Aluminum Wheels
- Spare Tire and Carrier
- Two-Tone Painted Fiberglass Front Cap
- Docking Lights
- 30" Entry Door w/Window
- Slam-latch Insulated Luggage Doors
- Rear Ladder
- LED TV
- AM/FM/CD/DVD Stereo w/Bluetooth Streaming
- LED Ceiling Lights
- Gas/Electric RV Refer w/Raised Panel Insert
- Microwave Over the Range
- Large 3-Burner Range w/Oven and Range Cover
- Solid Surface Countertops
- Ceramic Toilet w/ Foot Flush
- Upgraded Furniture
- Sleeper Sofa
- Swivel Rocker Recliner(s) (where applicable)
- 60" x 80" Mattress
- Night Shades
- All-in-One Centralized Control Panel
- Washer/Dryer Prep
- Heated and Enclosed Underbelly



*Premium Travel Trailers & Fifth Wheels*

**WINNEBAGO**  
TOWABLES™

# FLOORPLANS



**35RLXLT**



**37BHXLTL**

# SPECIFICATIONS

|                                       | <b>35RLXLT</b> | <b>37BHXLTL</b> |
|---------------------------------------|----------------|-----------------|
| Exterior Length (Pin to Rear Bumper)  | 35' 11"        | 40' 6"          |
| Exterior Height (ft.) (Including A/C) | 13' 0"         | 13' 0"          |
| Exterior Width (ft.) (Fenders/Body)   | 8' 0"          | 8' 0"           |
| Interior Height (ft.)                 | 8' 5"          | 8' 5"           |
| GVWR (lbs.)                           | 15,000         | 15,000          |
| Dry Weight (lbs.)                     | 10,520         | 12,400          |
| Dry Hitch Weight (lbs.)               | 2,140          | 2,080           |
| Axles (lbs.)                          | 2@6,000        | 2@6,000         |
| GAWR (lbs.)                           | 6,000          | 6,000           |
| Tire Size                             | ST235/80R16E   | ST235/80R16E    |
| Fresh Water (Tank Only) (gal.)        | 50             | 50              |
| Black Tank Capacity (gal.)            | 44             | 85              |
| Grey Tank Capacity (gal.)             | 85             | 111             |
| LP Capacity (lbs.)                    | 60             | 60              |
| LP Capacity with Upgrade (lbs.)       | N/A            | N/A             |
| Awning Length (ft.)                   | 14             | 17              |
| Slide-outs                            | 3              | 4               |
| Sleeps                                | +6             | +12             |
| Furnace (BTU)                         | 30,000         | 35,000          |
| Water Heater (gal.)                   | 10             | 10              |



**Winnebago Towables**  
 201 14th Street, P.O. Box 2001  
 Middlebury, IN 46540 (574) 825-5250  
[www.winnebagotowables.com](http://www.winnebagotowables.com)

