

VENTANA

2016 DIESEL MOTOR COACH



WHEN YOU KNOW THE DIFFERENCE SM





VENTANA

EXPERIENCE THE TOTAL PACKAGE

Available Freightliner® XCR chassis 400 HP Cummins® ISL diesel engine*

Completely redesigned sculpted front and rear caps with stainless steel trim

Twelve innovative floor plans, including a wheelchair-accessible layout

Comfort Drive™ Steering System with Passive Steer technology

**Available on 40' & 43' coaches*



WHEN YOU KNOW THE DIFFERENCE SM





RON STICHTER

VP of Engineering, Newmar Corporation

“As VP of Engineering, I take great pride in the contributions my team has made to the more than 40 years’ worth of RV breakthroughs that have come to define The Newmar Difference. Since day one, my mission has always been to uphold Newmar’s reputation as an industry leader in product design and engineering innovation. Every application we pioneer has the same overall purpose: Improve the customer experience. This year, we are proud to introduce the STAR Foundation, a platform that will add strength and stability to our lineup of diesel and luxury coaches for years to come.”

EVERYTHING YOU WANT AND MORE

Crafted in the Newmar tradition, the 2016 Ventana offers cutting-edge style, ample power, intuitive technology and a generous list of standard luxuries others call options – all in one incredible package. And with 12 unique floor plans to choose from, there’s a Ventana for every lifestyle, so you can enjoy the feel of a “custom-built” motor coach for less than you ever thought possible.

Every 2016 Ventana is bolstered by Newmar’s latest engineering breakthrough – the all-new STAR Foundation, which adds strength and durability to an already stout Freightliner® chassis. Showcasing premium styling, Ventana touts taller, stainless-steel accented front and rear caps. Inside, a redesigned cockpit features a color rearview monitoring system, side-view cameras, 6-speaker JBL® premium audio system and a wireless charging mat capable of powering smartphones, tablets and more.



Antiquity Décor with Carmel Glazed Cherry Cabinetry - Floor Plan 4041



AN ADMIRABLE SPACE

Explore the 2016 Ventana and you'll discover room for all thanks to Flexsteel® Ultralux leather furniture throughout, including an available 92" Hide-a-Bed sofa. Want to enjoy your shows on the road? A standard Sony® entertainment package with LED TV, DVD player and surround sound system makes it easy.

Both driver and passenger seats are power adjustable, letting you tailor your seating position, lumbar support and footrest height. Up above, Newmar's Designer Feature Ceiling eliminates exposed vents, contributing to a contemporary, upscale living space.

High-Polish Porcelain Tile Flooring





Polished Solid-Surface Countertop with Oversized Kitchen Window

A TRUE RESIDENTIAL RESPITE

When your coach is a 2016 Ventana, feeling at home just comes naturally. High-polish porcelain tile flooring is paired with premium, custom-made vanity lighting to produce an upscale yet inviting atmosphere. An oversized kitchen window* sits just behind a new double-bowl sink with extendable chef's faucet, creating the perfect setting for culinary exploration.

**Oversized kitchen window and pantry with pull-out drawers exclusive to floor plan 4041*



Available Hide-a-Leaf Dinette



A RELAXING OASIS

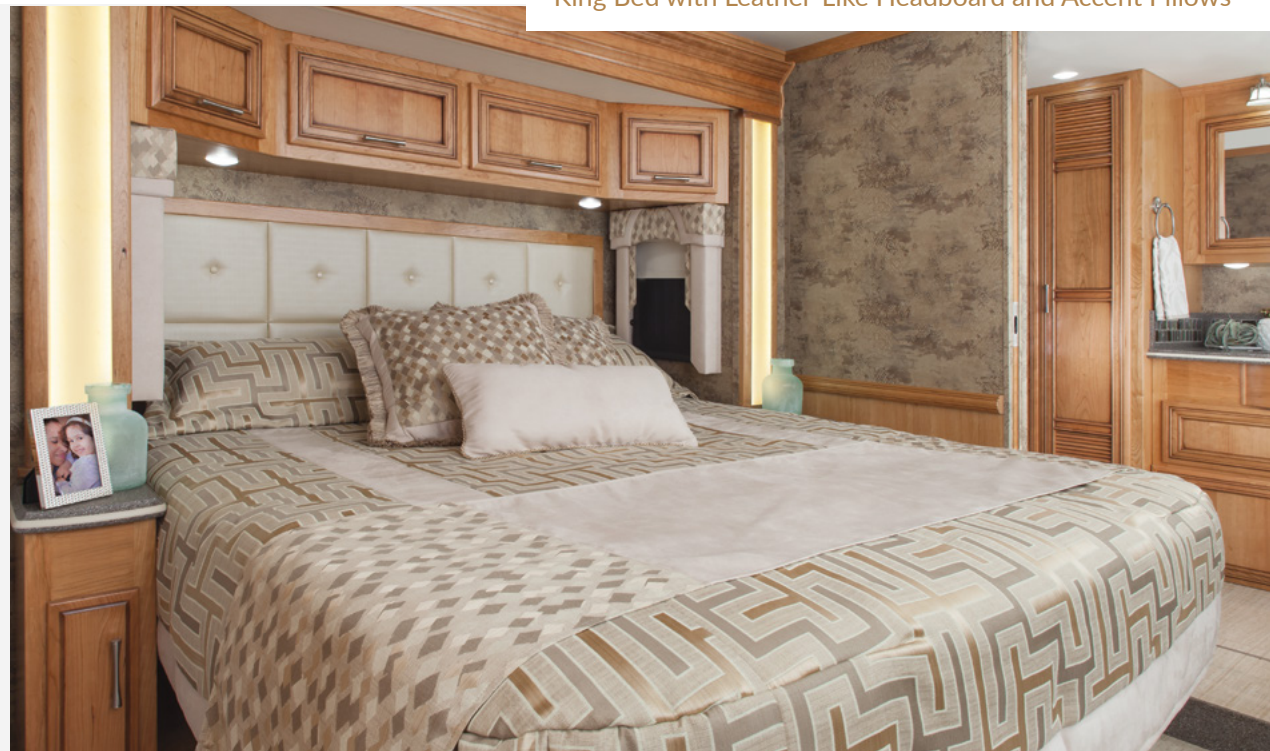
The 2016 Ventana features a master bedroom that delivers you with more than just a comfortable place to sleep. Light from LED-powered vertical fasciae reflects off of the polished solid-surface nightstands, offering you a soothing retreat. One that's anchored by a plush pillow-top mattress atop a full King bed.*

When it's time to prepare for the day ahead, you will find all of your favorites stored neatly within a pair of oversized bureau cabinets** and accompanying hardwood drawers. Both are adorned by all-new door and drawer hardware, although you may find yourself too busy admiring the clarity of the standard Sony® LED TV to notice.

**King bed available with select floor plans*

***Bureau cabinets available with select floor plans*

SONY®



Hardwood Bureau Cabinets with 32" Sony® LED TV

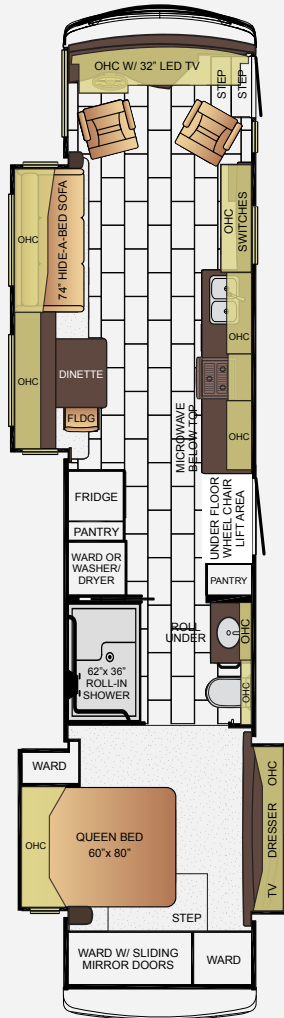
SIZE MEETS STYLE

Spacious without sacrificing the little things, the 2016 Ventana gives you a hardwood hanging wardrobe to go with polished solid-surface countertops and a gorgeous glass tile backsplash. The full-glass shower measures 36" in diameter, and an available mid-ship half-bath comes decorated with accent wallpaper custom-designed for Newmar.



Polished Solid-Surface Sink with Mosaic Backsplash





4311

App. Overall Length	43'10"
Width	101.5"
App. Overall Height	12'11"
Interior Width	95.5"
Interior Height	84"
Grey Tank	65 gal.
Sewage Tank	45 gal.
Water Tank	105 gal.
Propane Tank	32 gal.
Furnace	50,000 btu



GO ANYWHERE, DO ANYTHING

Newmar's latest wheelchair-accessible floor plan, Ventana 4311 comes equipped with a remote-controlled BraunAbility® lift and access door. Inside you'll find extra-wide aisles throughout, a spacious master bath with roll-in shower plus height-adjusted switches, outlets, drawers, countertops and more.



Height-Adjusted Bathroom Fixtures



STRENGTH YOU CAN FEEL

In addition to reinvented exterior styling, the 2016 Ventana features a cutting-edge Freightliner® tag axle chassis accompanied by an HWH® hydraulic leveling system.* Factor in Newmar's Comfort Drive™ Steering System with Passive Steer technology, and you have a coach you'll love driving for years to come.

The 2016 Ventana is further solidified by Newmar's all-new STAR Foundation. A groundbreaking steel superstructure, STAR Foundation is engineered to enhance chassis durability and support while raising exterior storage compartments by 2", thus increasing space while providing easier access.

**Freightliner® tag axle chassis with HWH® hydraulic leveling system available on 40'-43' floor plans*



Optional 40" Sony® LED TV with JBL Soundbar

EXTERIOR DÉCOR



BLEEKER EXTERIOR



BROADWAY EXTERIOR

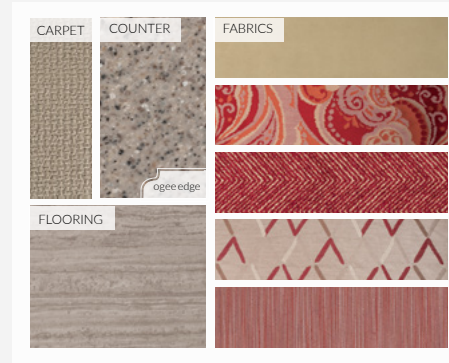


DUNE EXTERIOR

INTERIOR DÉCOR



ANTIQUITY INTERIOR



CHEVAL INTERIOR



PHANTOM INTERIOR

WOOD OPTIONS



WICKER GLAZED MAPLE

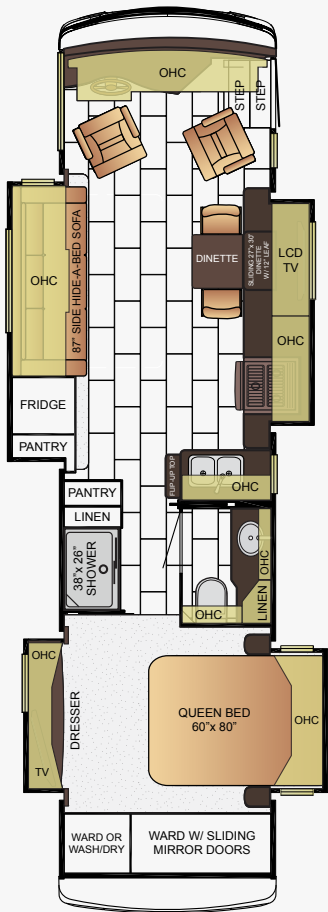


CARMEL GLAZED CHERRY



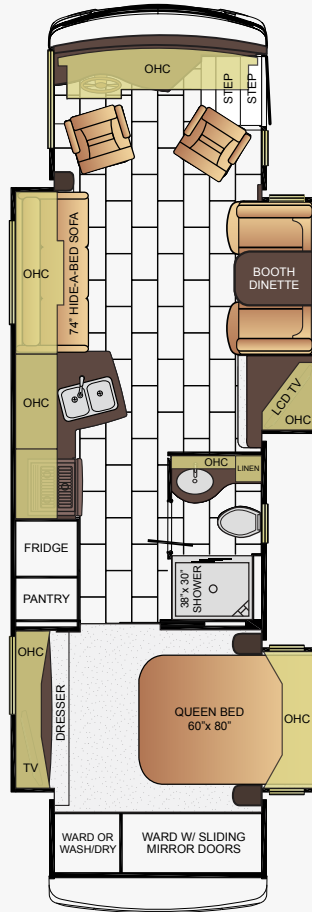
MANHATTAN GLAZED MAPLE

FLOOR PLANS



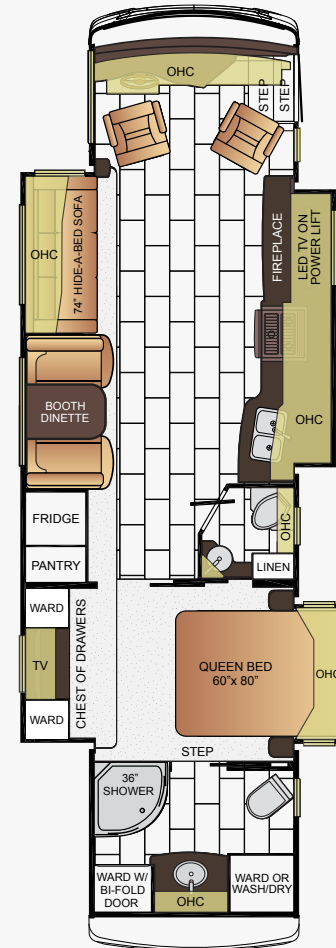
3427

App. Overall Length	34'10"
Width	101.5"
App. Overall Height	12'10"
Interior Width	95.5"
Interior Height	84"
Grey Tank	65 gal.
Sewage Tank	45 gal.
Water Tank	105 gal.
Propane Tank	32 gal.
Furnace	35,000 btu



3436

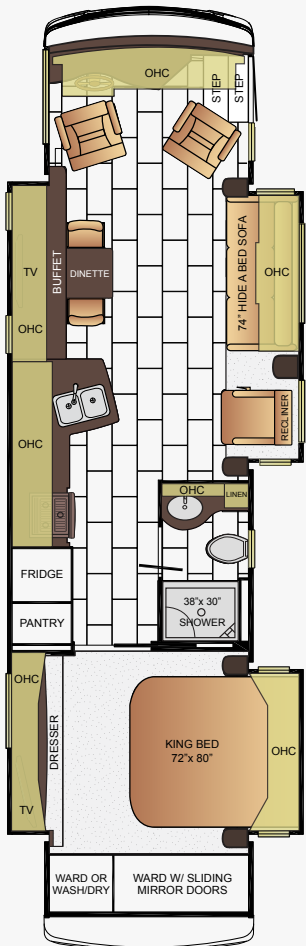
App. Overall Length	34'10"
Width	101.5"
App. Overall Height	12'10"
Interior Width	95.5"
Interior Height	84"
Grey Tank	65 gal.
Sewage Tank	45 gal.
Water Tank	105 gal.
Propane Tank	32 gal.
Furnace	35,000 btu



3709

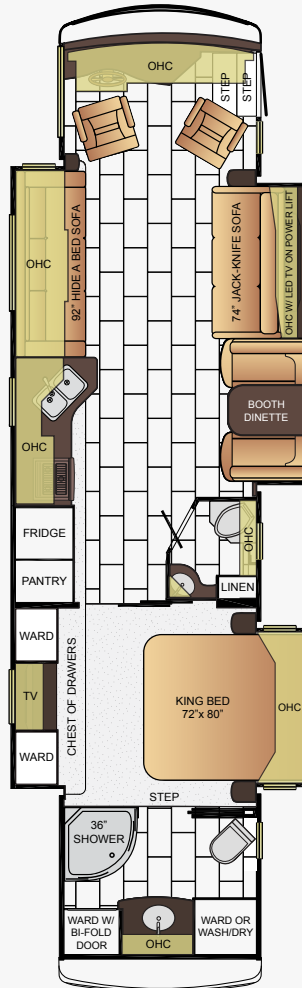
App. Overall Length	37'8"
Width	101.5"
App. Overall Height	12'10"
Interior Width	95.5"
Interior Height	84"
Grey Tank	65 gal.
Sewage Tank	45 gal.
Water Tank	105 gal.
Propane Tank	32 gal.
Furnace	54,000 btu

FLOOR PLANS



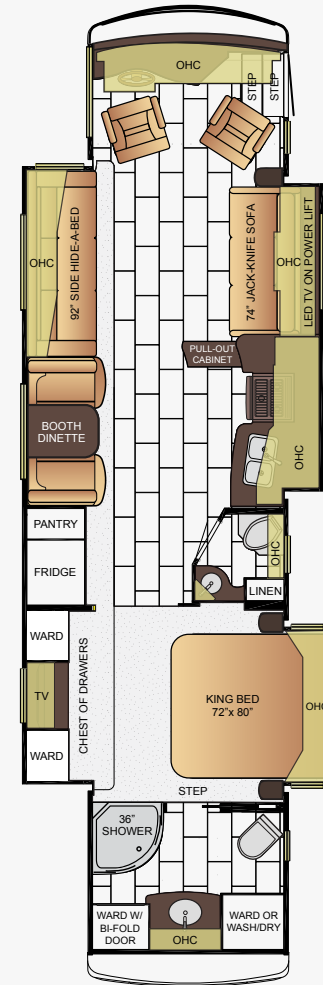
3725

App. Overall Length	37'8"
Width	101.5"
App. Overall Height	12'10"
Interior Width	95.5"
Interior Height	84"
Grey Tank	65 gal.
Sewage Tank	45 gal.
Water Tank	105 gal.
Propane Tank	32 gal.
Furnace	54,000 btu



4002

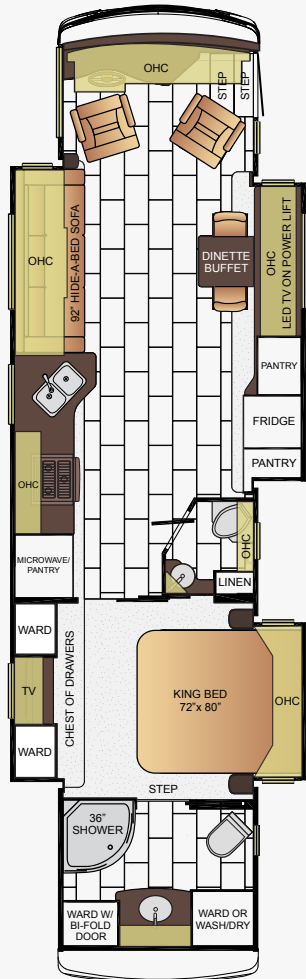
App. Overall Length	40'10"
Width	101.5"
App. Overall Height	12'11"
Interior Width	95.5"
Interior Height	84"
Grey Tank	65 gal.
Sewage Tank	45 gal.
Water Tank	105 gal.
Propane Tank	32 gal.
Furnace	54,000 btu



4037

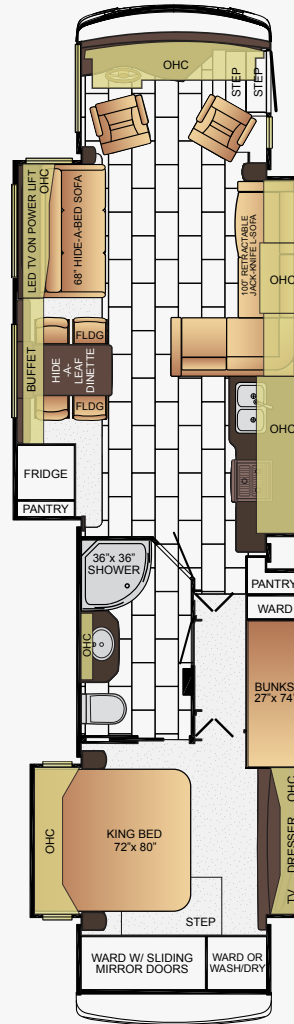
App. Overall Length	40'10"
Width	101.5"
App. Overall Height	12'11"
Interior Width	95.5"
Interior Height	84"
Grey Tank	65 gal.
Sewage Tank	45 gal.
Water Tank	105 gal.
Propane Tank	32 gal.
Furnace	54,000 btu

FLOOR PLANS



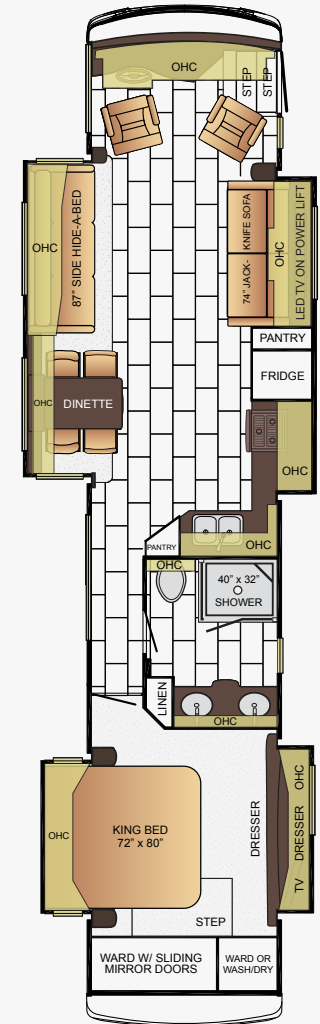
4041

App. Overall Length	40'10"
Width	101.5"
App. Overall Height	12'11"
Interior Width	95.5"
Interior Height	84"
Grey Tank	65 gal.
Sewage Tank	45 gal.
Water Tank	105 gal.
Propane Tank	32 gal.
Furnace	54,000 btu



4316

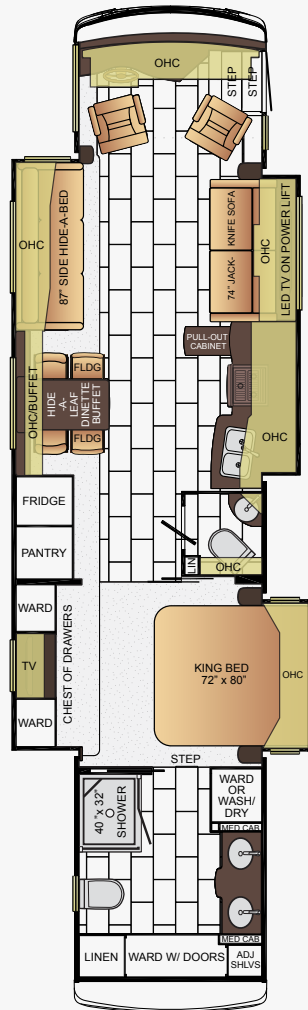
App. Overall Length	43'10"
Width	101.5"
App. Overall Height	12'11"
Interior Width	95.5"
Interior Height	84"
Grey Tank	65 gal.
Sewage Tank	45 gal.
Water Tank	105 gal.
Propane Tank	32 gal.
Furnace	50,000 btu



FLOOR PLANS

4322

App. Overall Length	43'10"
Width	101.5"
App. Overall Height	12'11"
Interior Width	95.5"
Interior Height	84"
Grey Tank	65 gal.
Sewage Tank	45 gal.
Water Tank	105 gal.
Propane Tank	32 gal.
Furnace	50,000 btu



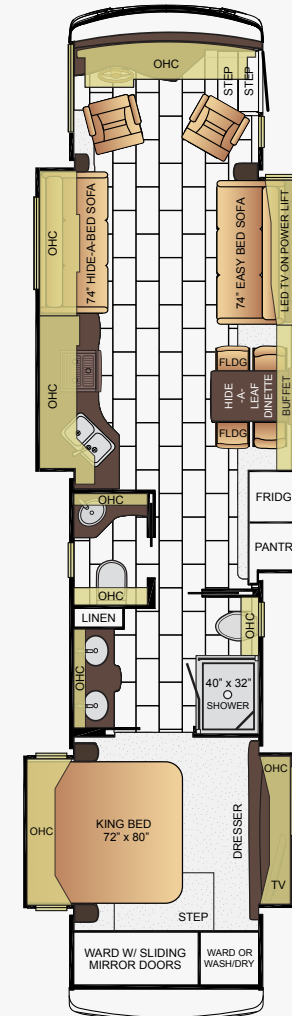
4369

App. Overall Length	43'10"
Width	101.5"
App. Overall Height	12'11"
Interior Width	95.5"
Interior Height	84"
Grey Tank	65 gal.
Sewage Tank	45 gal.
Water Tank	105 gal.
Propane Tank	32 gal.
Furnace	50,000 btu



4381

App. Overall Length	43'10"
Width	101.5"
App. Overall Height	12'11"
Interior Width	95.5"
Interior Height	84"
Grey Tank	65 gal.
Sewage Tank	45 gal.
Water Tank	105 gal.
Propane Tank	32 gal.
Furnace	50,000 btu



CONSTRUCTION & CHASSIS SPECIFICATIONS

LIKE A FINE HOME, the 2016 Ventana is framed 16 inches on center, allowing the best placements of outlets, switches and other components. A high-performing motor coach, Ventana features a Freightliner® Custom Chassis, an HWH® hydraulic leveling system and added support from Newmar's all-new STAR Foundation.

Electrical wiring holes in Ventana's aluminum frame are ringed with plastic grommets to protect wires from chafing. What's more, Newmar only uses Sikaflex® elastic adhesive throughout Ventana's construction – one of the strongest bonding agents available. It seals against air and water and helps dampen sound and vibration.

Floor Plan	Engine HP	Axle Ratio	Fuel Cap.	Wheel Base	Front GAWR*	Rear GAWR*	Tag GAWR*	GVWR*	GCWR*	App. UVW	App. NCC
3427	360	4.78	100 gal.	206	12,000 lb.	23,000 lb.	0	35,000 lb.	45,000 lb.	28,000 lb.	7,000 lb.
3436	360	4.78	100 gal.	206	12,000 lb.	23,000 lb.	0	35,000 lb.	45,000 lb.	28,000 lb.	7,000 lb.
3709	360	4.78	100 gal.	240	12,400 lb.	24,000 lb.	0	36,400 lb.	46,400 lb.	28,600 lb.	7,800 lb.
3725	360	4.78	100 gal.	240	12,400 lb.	24,000 lb.	0	36,400 lb.	46,400 lb.	28,600 lb.	7,800 lb.
4002	400	4.78	100 gal.	245+TAG	14,000 lb.	20,000 lb.	10,000 lb.	44,000 lb.	59,000 lb.	34,100 lb.	9,900 lb.
4037	400	4.78	100 gal.	245+TAG	14,000 lb.	20,000 lb.	10,000 lb.	44,000 lb.	59,000 lb.	34,100 lb.	9,900 lb.
4041	400	4.78	100 gal.	245+TAG	14,000 lb.	20,000 lb.	10,000 lb.	44,000 lb.	59,000 lb.	34,100 lb.	9,900 lb.
4311	400	4.78	100 gal.	281+TAG	14,000 lb.	20,000 lb.	10,000 lb.	44,000 lb.	59,000 lb.	35,000 lb.	9,000 lb.
4316	400	4.78	100 gal.	281+TAG	14,000 lb.	20,000 lb.	10,000 lb.	44,000 lb.	59,000 lb.	35,000 lb.	9,000 lb.
4322	400	4.78	100 gal.	281+TAG	14,000 lb.	20,000 lb.	10,000 lb.	44,000 lb.	59,000 lb.	35,000 lb.	9,000 lb.
4369	400	4.78	100 gal.	281+TAG	14,000 lb.	20,000 lb.	10,000 lb.	44,000 lb.	59,000 lb.	35,000 lb.	9,000 lb.
4381	400	4.78	100 gal.	281+TAG	14,000 lb.	20,000 lb.	10,000 lb.	44,000 lb.	59,000 lb.	35,000 lb.	9,000 lb.

Lengths, heights, widths and dry weights are approximate. Weight will vary based on optional equipment added to the above base weight.

GAWR: Gross Axle Weight Rating is the maximum permissible weight for an axle.

GVWR: Gross Vehicle Weight Rating is the maximum permissible weight for a fully loaded motor coach.

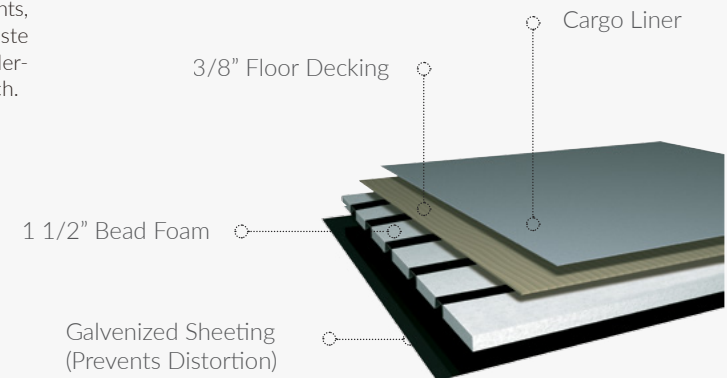
GCWR: Gross Combination Weight Rating is the value specified by the manufacturer of the vehicle as the maximum allowable loaded weight of this motor coach and any towed trailer or towed vehicle.

UVW: Unloaded Vehicle Weight is the weight of this motor coach as built at the factory with full fuel, engine oil and coolants. Does not include cargo, fresh water, propane gas or dealer-installed accessories.

NCC: Net Carrying Capacity is the maximum weight of all occupants, including the driver, personal belongings, food, fresh water, waste water, propane gas, tools, tongue weight of towed vehicle, dealer-installed accessories, etc., that can be carried by the motor coach.

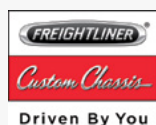
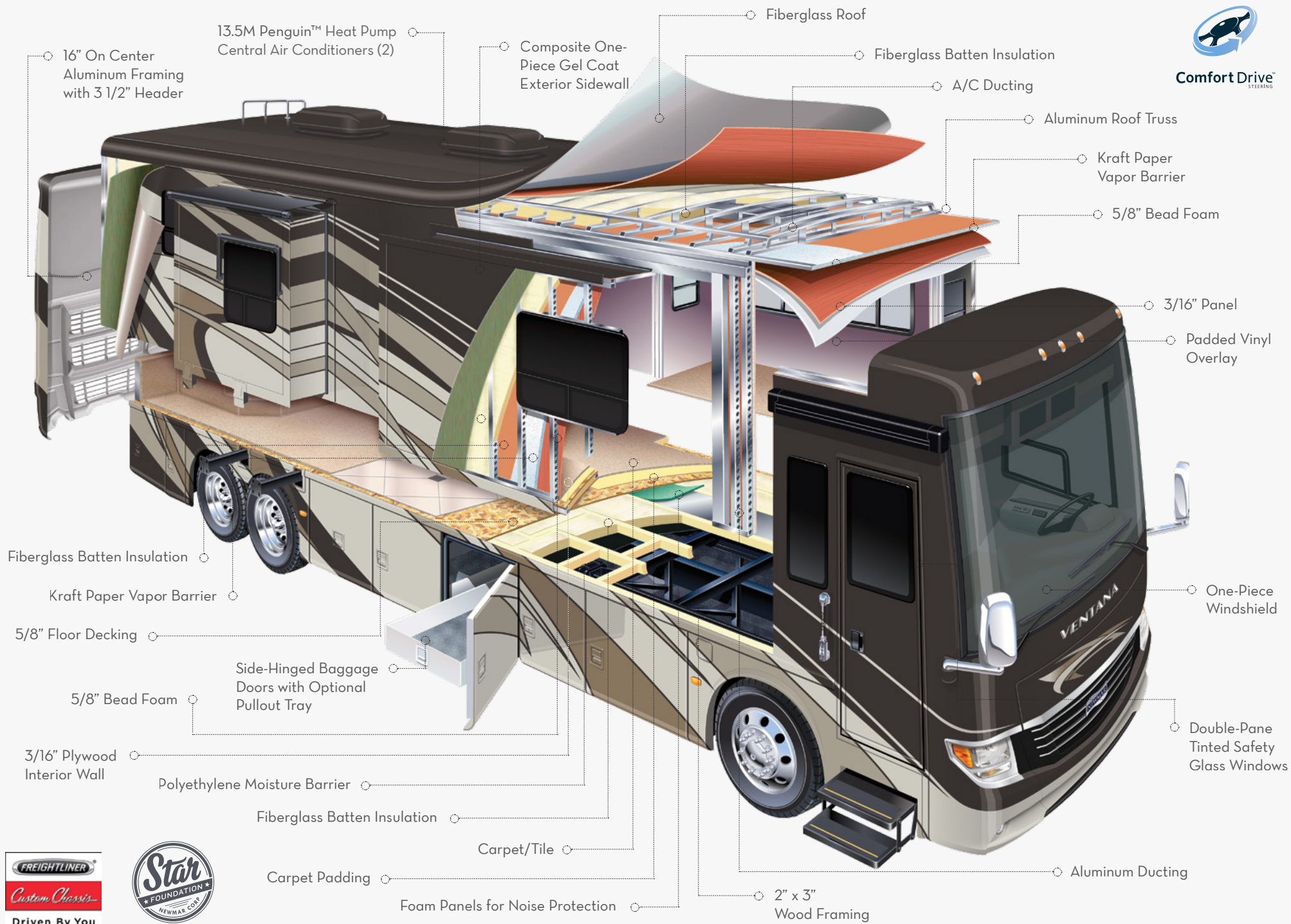
**Specifications supplied by the chassis manufacturer.*

Ventana R-Values:
Roof R-Value = 19
Sidewall R-Value = 11
Floor R-Value = 16
Basement R-Value = 4





Comfort Drive
STEERING



FEATURES & OPTIONS



CHASSIS FEATURES

- Freightliner® Passive Steer Tag Axle XCR Chassis with 400 HP Cummins® ISL Engine on 40'-43' Floor Plans
- Freightliner® XCR Chassis with 360 HP Cummins® ISB Engine on 34'- 36' Floor Plans
- Polished Aluminum Wheels
- Comfort Drive™ Steering System with Adjustable Controls
- Manual Tilt and Telescope Steering Column with VIP Smart Wheel
- Recessed Fuel Fills with Crossover to Fill from Either Side
- Back-Up Alarm
- Anti-Lock Braking System



AIR CONDITIONING AND HEATING

- Two 13.5M Penguin Heat Pump Air Conditioners
- Propane Gas Furnace with Ducted Heat on 34'- 40' Floor Plans
- Hydronic Zone Heating System with Continuous Hot Water on 43' Floor Plans
- Driver & Passenger Dash Overhead Ventilation System
- Wall-Mounted Sensors for Heating and Air Conditioning

OPTIONS

- Two 15M Penguin™ Heat Pump Air Conditioners
- Hydronic Zone Diesel Heat with Continuous Hot Water
- Three 15M Penguin™ Heat Pump Air Conditioners and Energy Management System*



APPLIANCES

- Convection Microwave
- Recessed 3-Burner Cooktop
- Norcold® 10 Cf. Refrigerator with Brushed Aluminum Front
- 10 Gal. Gas/Electric Water Heater with Direct-Spark Ignition on 34'- 40' Floor Plans

- Prep for Two-Piece Washer/Dryer
- Countertop-Matching Flush Gas Cooktop Cover
- Fireplace in Living Area*

OPTIONS

- 30" Convection Microwave in Kitchen Overhead with Cooktop
- Norcold® 12 Cf. Four-Door Refrigerator with Icemaker
- Frigidaire® 10 Cf. Refrigerator with 2000-Watt Pure Sine Inverter and Two Extra Batteries
- Whirlpool® 19.7 Cf. Refrigerator with 2000-Watt Pure Sine Inverter and Two Extra Batteries
- Whirlpool® Two-Piece Washer/Dryer
- All Electric, Flush-Mount Induction Cooktop, Whirlpool® 19.7 Cf. Refrigerator, 4 Extra Batteries, 2800-Watt Inverter, Hydronic Heat
- All Electric, Flush-Mount Kenyon® Cooktop, Whirlpool® 19.7 Cf. Refrigerator, 4 Extra Batteries, 2800-Watt Inverter, Hydronic Heat
- Central Vacuum with Deluxe Tool Kit
- Fireplace in Living Area*



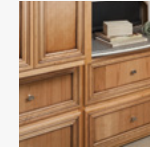
AUDIO, VIDEO AND ACCESSORIES

- Sony® LED TV and DVD Player in Living and Bedroom Areas* (TV Sizes Vary Per Floor Plan)
- AM/FM/CD Dash Radio with JBL® 180-Watt Sound System
- Sony® Surround Sound System with Subwoofer
- Color Rearview Monitor System with Audio
- Side-View Cameras
- Winegard® Digital TV Antenna
- Satellite Dish Prep on Roof
- Two Bedroom Radio Speakers
- TV Jack and 110-Volt Receptor in Door-Side Exterior Storage Compartment

OPTIONS

- SiriusXM® Satellite Radio Capability (Does Not Include Monthly Subscription)
- Sony® 40" LED TV in Front Overhead
- Sony® 48" LED TV with Fireplace in Place of Front Overhead TV*
- Exterior Entertainment Center in Sidewall with Sony® 40" LED TV and Soundbar
- Exterior Entertainment Center in Storage Compartment with Sony® 32" LED TV, Radio, CD Player and Soundbar
- Winegard® Automatic Satellite
- Winegard® In-Motion Satellite

- Winegard® Digital Power Lift TV Antenna
- High Definition Wiring with Blu-ray DVD Player
- Dash Radio with Touchscreen Navigation System



CABINETS AND FURNITURE

- Manhattan Maple Cabinets with Mitered Designer Glazed Doors
- Dinette with Power-Adjustable Table, Bench Seat and Folding Chair on 4311 Floor Plan*
- Passenger-Seat Work Station
- Polished Solid-Surface Countertops in Bathroom and Bedroom
- Adjustable Pullout Pantry Shelves*
- Flexsteel® Ultralux Leather Sofa and Driver/Passenger Seats
- Six-Way Power Adjustable Driver/Passenger Seats with xPower Lumbar Support and Footrest

OPTIONS

- Queen Bed
- Sleep Number® Premier Air Mattress
- Carmel Cherry Cabinets with Raised Panel Glazed Doors
- Wicker Maple Cabinets with Raised Panel Glazed Doors
- Combination Desk with Buffet Table, Two Fixed/Two Folding Chairs
- Combination Desk/Dinette with Freestanding Hide-a-Leaf Table, Two Fixed/Two Folding Chairs
- Combination Desk with Buffet Table, Two Fixed/Two Folding Chairs
- Door-Side Fold & Tumble Sofa with Air Mattress*
- Door-Side Hide-a-Bed Sofa with Two Off-Door Side Recliners & Lamp Stand
- Door-Side Extenda L-Sofa, Off-Door Side Wall Hugger Recliner, Fireplace and Televator TV
- Power Flip-Up Sofa in Bed Base with Sleep Number® Premier Air Mattress
- Door-Side Bar with Swivel Stools
- Power Incline Retracting Bed Base with Sleep Number® Premier Air Mattress
- Door-Side Extenda L-Sofa
- Euro-Booth Dinette and Two Folding Chairs
- Off-Door Side Two Swivel Wall Hugger Recliners with Table
- Buffet Cabinet with Freestanding Hide-a-Leaf Table, Two Fixed/Two Folding Chairs

FEATURES & OPTIONS

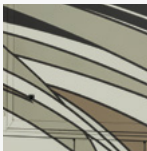


ELECTRICAL FEATURES

- 8.0 kW Cummins Onan® Diesel Quiet Series Generator
- 50-Amp Electrical Service with Flexible Cord and Automatic Transfer Switch
- Four 6-Volt House Batteries on Pullout Tray
- Battery Disconnect Switch for House Battery
- 10-Watt Solar Panel to Charge Chassis Battery
- 2000-Watt Inverter
- 12-Volt Auxiliary Receptacle on Dashboard
- Emergency Engine Start Switch
- Engine Block Heater
- Exterior Security Light on Doorside
- Mid-Ship Side Turn Signals
- LED Lights Recessed in Ceiling and Overhead Cabinets
- Accent Lights in Slide-out Fascia Trim
- Manually Operated Hold-To-Run Slide-out Switch
- Interior Courtesy Lights
- Lights in Exterior Storage Compartments
- USB Charger at Dinette & Bedroom Nightstand
- Wireless Charging Mat Built Into Dash

OPTIONS

- Energy Management System
- Power Rewind Reel with 50' Cord
- Power Rewind Reel with 34' Cord
- Automatic Generator Start on Low Battery or Temperature Setting
- Solar Prep Wire From Roof to House Battery Compartment



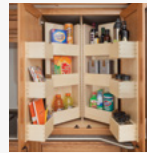
EXTERIOR FEATURES

- Full-Paint Masterpiece Finish™ with Diamond Shield Protection on Front Cap
- Convex Exterior Mirrors with Remote Control, Defrost and Turn Signals
- Entrance Door with Automatic Step
- Lit Exterior Storage Compartments with Cargo Liner
- Rear Hitch for Towing Car
- Rear Protective Full-Width Tow Guard
- Rear Ladder

- Undercoating
- Wheelchair Lift on 4311 Floor Plan
- Hydraulic Leveling Jacks
- Stainless Steel Exterior Trim Pieces on Front Cap and Grill Area

OPTIONS

- Large Chrome Exterior Mirrors
- Large Storage Tray with Access from One Side or Either Side *
- Chrome Power Baggage Door Locks, Keyless-Entry Door with Touch Pad & Doorbell
- Painted Power Baggage Door Locks, Keyless-Entry Door with Touch Pad & Doorbell
- Patio Hammock Package on Door Side Under Awning

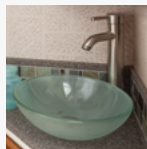


INTERIOR FEATURES

- Designer Feature Ceiling
- Day/Night Pleated Window Shades & Lambrequins
- Mini Blinds in Kitchen and Bathroom Windows
- Tile Floor in Kitchen, Bathroom and Living Area
- Carpeting in Bedroom and on Slide-out Floors
- MCD® Power Shades at Windshield and Manual Shades on Driver/Passenger Side Windows
- Dash Panel Color Coordinated ABS
- Front Entrance Door with Power Stepwell Cover
- Inlaid Six-Panel Design Interior Passage Doors
- Quilted Bedspread with Bed Scarf & Accent Pillows
- 10 Bc Fire Extinguisher, Smoke Detector and Carbon Monoxide Detector

OPTIONS

- Floor Tile Extended into Bedroom Area
- Safe Located in Bedroom Wardrobe
- MCD® Window Shades
- MCD® Power Window Shades with Remote Control



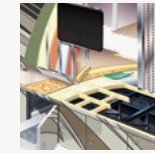
PLUMBING AND BATH FEATURES

- Demand Water System
- Sewage Holding-Tank Rinse
- Water Heater Bypass System

- Dometic® 321 China Bowl Stool or Macerator Stool*
- Systems Monitor Panel
- Sentrel™ Acrylic Shower Walls with Glass Door*
- Water Filter for Entire Unit
- Exterior Shower

OPTIONS

- 110-Volt Heat Pads for Holding Tanks
- Power Water Hose Reel
- Hot Water Line To Generator Area

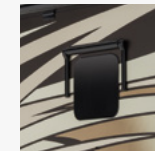


CONSTRUCTION FEATURES

- BriteTEK™ Roof with Walkable Decking
- Gel Coated Fiberglass Exterior Sidewalls, Front and Rear Caps
- Aluminum-Frame Sidewalls & Roof Construction, 16" on Center
- 5/8" Foam Insulation Laminated in Sidewalls & Ceiling

OPTIONS

- One-Piece Molded Fiberglass Roof
- Mechanical Lock Arms on Slide-out Rooms
- Polar Pak R19 Batten Insulation in Roof



WINDOWS, AWNINGS AND VENTS

- Frameless Double-Pane Tinted Safety-Glass Windows
- Fan-Tastic® Vent with Rain Sensor in Kitchen and Bathroom
- Skylight Above Shower
- Carefree® Travelr™ Power Side and Entrance Door Awning with Alumaguard
- Slide-out Awning Covers
- One-Piece Tinted Windshield
- Egress Door in Rear Bathroom*

OPTIONS

- Carefree® Window Awning
- Kitchen Window

*Check With Dealership On Floor Plan Availability



OUR PARTNERS

Where the Finest Names in Quality and Performance are Along for the Ride

To ensure that you experience only the best in comfort, control and unsurpassed convenience in our incomparable family of Luxury Coaches, Newmar partners with the most prestigious names in mobile lifestyle, entertainment and technology. These brands

are leaders in their fields and legends in providing customers with new, unsurpassed levels of quality and reliability. Best-in-class performance from names you can trust. At Newmar, that's our difference. And our promise.



THE MILLER WAY

*Industry-Leading Quality,
From Our Family to Yours*

For the Miller family, RVs are what we build because RVing is what we love. To us, the RV lifestyle is more than our business – it's our passion. Our customers choose Newmar time and time again because they trust in us, our products and our people.

I myself am proud to own a Dutch Star designed, assembled and backed by artisans, engineers and service specialists who represent the best our industry has to offer. Men and women who have spent an average of 13 years as members of the Newmar family. Without them, The Newmar Difference simply wouldn't exist.

Matt Miller
Newmar President, lifelong motor coach enthusiast

VENTANA

NEWMAR EXPRESS LIMITED WARRANTY

Every Ventana diesel motor coach is backed by Newmar's one-year limited warranty/unlimited miles. Ask your Newmar dealer for details.

LIMITED FIVE-YEAR STRUCTURAL WARRANTY

If any part of your Newmar recreational vehicle superstructure (which is the steel/aluminum structure of the sidewall, roof or frame) fails to perform properly within five years from the date of purchase because of faulty workmanship or material supplied by Newmar, it will be repaired without charge for either parts or labor by Newmar. This structural warranty is available only to the original purchaser and is non-transferable.

Some features in our literature are optional. Colors and finishes are photographic representations. The actual materials may look different. Prices, specifications and floor plans are subject to change at Newmar's discretion, without prior notice or obligation. Please see your dealer for actual samples and specifications.



WHEN YOU KNOW THE DIFFERENCE SM