

SOUTHWIND®

SOUTHWIND



2016

CLASS A GAS



Southwind carries you on life's greatest adventures.





Your travels may take you far, but always by your side, providing all the comfort, convenience and style you desire, is Southwind. No matter where you roam, Southwind will call you home.

Southwind Top Features

- LG A/V Electronics
- LED Lighting
- 12"x 24" Composite Tile Flooring Throughout
- Power Platform® Chassis Construction
- Automotive Dash w/Passenger Workstation
- Power Awning w/LED Light Strip
- New Front Cap w/LED Lighting
- New Tile Pattern
- New Valance Design
- Blu-ray Surround Sound System
- Manual Roller Shades
- Aluminum Bus-Style Side Swing Luggage Doors
- Powerlock System™ w/Interlocking Floors, Walls & Ceiling
- Powerframes™ Precision Welding w/5-Point Build System
- F-21 Construction & Manufacturing Technology

OPTIONAL

- Tankless Water Heater
- Exterior Entertainment Center

Go to FleetwoodRV.com and build your own Southwind!



Champagne Shimmer



Milky Way



Pewter Mist

Both inside and out, there is a wide selection of colors, styles and finishes. From the moment you lay your eyes on a Southwind, the high-style graphics and décor collection welcome you with gracious beauty and contemporary design. We've paid attention to every detail. So wherever you are, you'll feel right at home.

CHAMPAGNE SHIMMER

SOFA



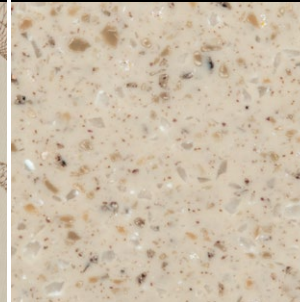
ACCENT



BEDSPREAD



COUNTERTOP



FLOORING



CARPET



CABINERY

BARCELONA



MILKY WAY

SOFA



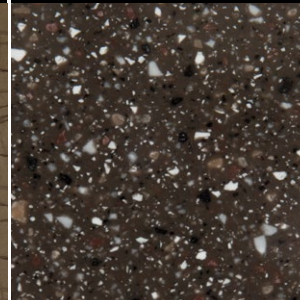
ACCENT



BEDSPREAD



COUNTERTOP



FLOORING



CARPET



BUTTERNUT



INTERIOR THROUGHOUT

- 1,200-Watt Inverter (32VS)
- 2,000-Watt Inverter w/Two Additional Batteries (34A, 36L)
- 10-Gallon Quick Recovery Water Heater w/Direct Spark Ignition (Gas/Electric)
- 120V/12V AC/DC Converter Central Electrical Panel
- 20,000/30,000 Btu/h Dual Furnaces (34A, 36L)
- 34,000 Btu/h Furnace (32VS)
- 84" Interior Ceiling Height
- Blu-ray™ Home Theater Sound System
- Hardwood Cherry Cabinet Doors & Drawers
- Composite Tile Flooring
- Full-Length, Metallic A/C Ducting
- Deluxe Roller Bearing, Full-Extension Drawer Guides & Transit-Ship Locks
- Demand Water Pump w/Filter
- Dual Roof A/C High-Efficiency w/Solar Panel, Chill Grills & Bedroom Heat Pump
- Flat Interior Ceiling
- Full HD Video System
- LED Lighting
- Neutral Loss Protection
- Solid-Surface Countertops
- Manual Day/Night Double Roller Shades
- Soft Touch Vinyl Ceiling
- Tuff-Pex™ Plumbing System
- Water Heater Bypass
- Whole Coach Water Filtration System

Optional

- Auto-Locating Satellite Dish
- CSA Package (Canadian Specs)**
- Satellite Radio (Subscription Required)
- Tankless Water Heater
- Winegard® Stationary DSS System

DRIVER CONVENIENCE

- 3-Point Seat Belts at Driver & Front Passenger Seats
- AM/FM Radio w/CD Player, Satellite Radio- Ready w/ Auxiliary Inputs
- Auto A/C Heater Combo
- Auxiliary Start Circuit
- Battery Disconnect System
- Computer Workstation In-Dash
- Cruise Control
- Dual Dash Monitors
- Dash Fans
- Driver/Front Passenger - Faux Leather Seats Captain's Chairs w/Power Driver Seat
- Engine Cover Convenience Tray
- Intermittent Wiper Control
- Manual Roller Shades at Driver/ Passenger Window
- Power Front Windshield Shade
- Radio Switch Main/Auxiliary Power
- Soft-Touch Automotive Dash
- Tilt Steering Wheel
- Touch Screen Radio

GALLEY

- 12 cu.ft. 4-Door Refrigerator w/Icemaker (32VS)
- French Door Residential Refrigerator (34A, 36L)
- 3-Burner, High-Output Cooktop
- Brushed-Nickel Finish Cabinet Hardware
- Decorative Backsplash
- Double-Bowl Stainless Steel Sink
- Fan-Tastic® Power Roof Vent
- Radius Corner Cabinetry
- Range Cover Flush Mount
- Sharp® Convection Stainless Steel Microwave Oven
- Single-Lever Faucet w/Sprayer
- Sink Cover/Cutting Board
- Slide-Out Dinette Bins w/ Latches
- Solid-Surface Countertops
- Wastebasket

Optional

- 3 Burner Range w/High Output/ Piezo Ignitor & Oven w/Cooktop Cover

LIVING ROOM

- 40" LED HDTV (34A, 36L)
- Free-Standing Euro Recliner (32VS, 36L)
- Residential Seat Styling
- Sofa Bed w/Air Mattress (32VS)
- Jackknife Sofa (34A, 36L)
- 40" LED Mid-Ship TV (32VS)
- Electric Fireplace (34A)
- Facing Dinette
- Free-Standing Dinette w/ Credenza (32VS, 34A)
- Free-Standing Recliner (32VS, 36L)
- Sofa Sleeper w/Air Mattress & Footrest (32VS)

Optional

- 32" Front Overhead LED HDTV

BEDROOM

- 22" LED HDTV (32VS)
- 32" LED HDTV (34A, 36L)
- Bedspread w/Decor Pillows
- Headboard
- Rear Speakers
- Queen Bed Air Mattress
- King Bed (34A)
- Washer/Dryer Combo (34A, 36L)

Optional

- Queen Bed Air Mattress
- King Bed (34A)
- Washer/Dryer Combo (34A, 36L)

BATHROOM

- Fan-Tastic® Power Roof Vent
- Lavy Faucet
- Molded Tub/Shower Enclosure
- Porcelain Lavy Sink
- Porcelain Toilet w/Water Saver
- Toilet Tank San-T-Flush™ System

SAFETY/CONVENIENCE (INTERIOR)

- 10 ABC Fire Extinguisher
- Carbon Monoxide Detector/Alarm
- Entry Assist Handle
- Multiple Seatbelt Locations
- Propane Detector/Alarm
- Smoke Detector/Alarm

EXTERIOR THROUGHOUT

- 3 Graphic Color Choices
- 3-Way Water Pump Switch
- 5.5 kW Onan® MicroQuiet Generator
- 50 Amp Service
- Aluminum Bus-Style Side Swing Luggage Doors
- Aluminum Extruded Slide Ramps
- Aluminum Tube Front Grill
- Awning Rail/Drip Molding (Both Sides)
- Full-Body Paint
- Dryseal™ Edge Coating (Water-Wicking Wall Edge Coating)
- Dual Patio Receptacles
- Dual-Glazed Windows w/ Screens
- Fiberglass Front/Rear Caps
- Five-Point Build System™
- Halogen Headlights
- Heated Water & Holding Tank Compartments
- Lower Front Cap w/LED Lighting
- Molded Front Quarter Panels
- Mud Flaps
- One-Piece Panoramic Windshield
- Park Cable Receptacle
- Power Awning w/LED Light Strip
- Rear Ladder
- Seamless Beltline Trim
- Single-Motor Windshield Wipers w/Wet Arm
- Tapered Slideout Box Tops & Debris Awnings
- Tuff-Roof™ Low-Maintenance Roof System
- TV Antenna w/Signal Booster

Optional

- Clear Protective Front Mask
- Exterior Entertainment Center (34A, 36L)

AUTOMOTIVE

- 4-Point Automatic Levelers
- Trailer Hitch w/7-Pin Electrical Hook-Up

SAFETY/CONVENIENCE (EXTERIOR)

- Automatic Hydraulic Leveling Jacks
- Automotive Safety Glass
- Color Rear-Vision Camera w/ One-Way Audio
- Daytime Running Lights
- Hydraulic 4-Wheel Disk Brakes w/4-Wheel ABS
- Large, Heated Remote Rear-View Mirrors w/Side-View Cameras
- Lighted Entry Assist Handle
- Porch Light (Doorside)
- Power Entry Step
- Underhood Utility Lights
- Utility Compartment w/Exterior Shower
- Winterizing Pick-Up Tube

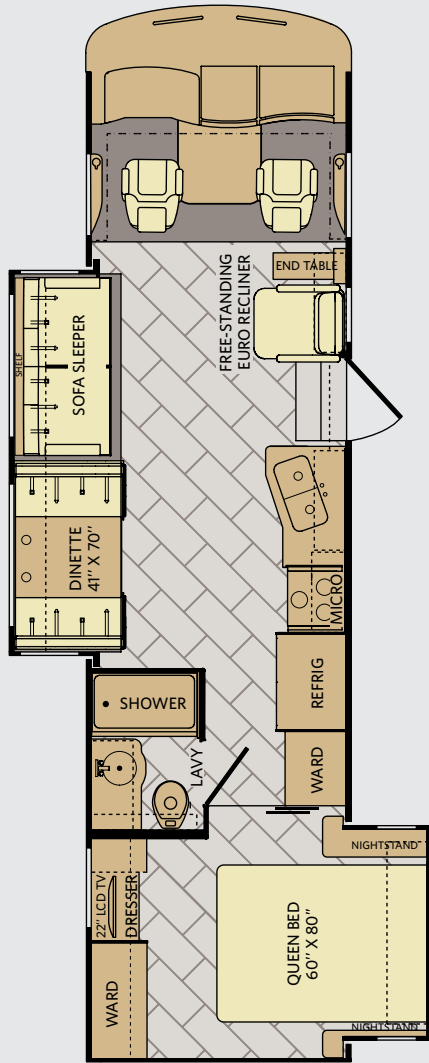
STORAGE

- Continuous One-Piece Compartment Bulb Seal
- Gas Lift Strut Supports (Select Locations)
- Pass-Through Storage (Select Models)
- Rotocast Molded Storage Boxes

BODY STRUCTURE

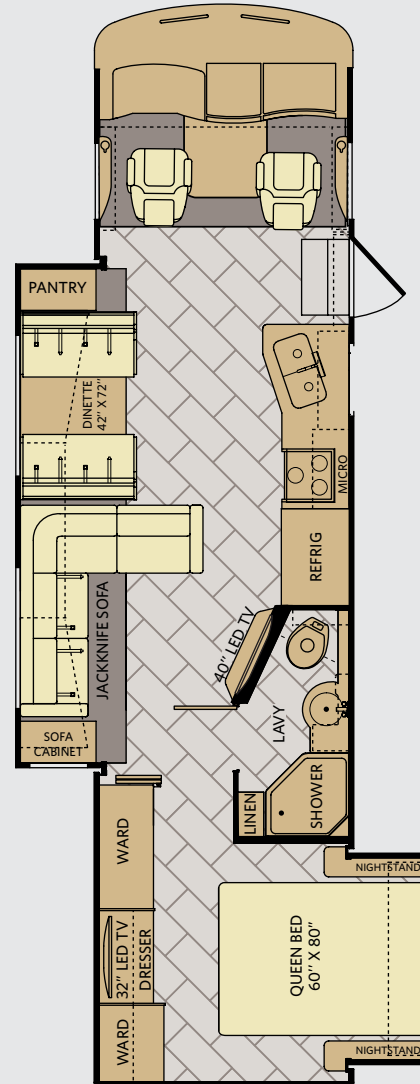
- Basement Floor Configuration
- Power Platform® Construction (Fleetwood Exclusive)
- Powerframes™ Precision, Welded Aluminum Interlocking Frames
- Powerlock System™ (Interlocking Floors, Walls, & Ceiling)
- Radiused & Cambered Entry Door
- Raised Space Frame Foundation
- Solid Bead-Foam Engineered Fit Insulation™
- Vacu-Bond™ Integrated Walls

Southwind Floor Plans



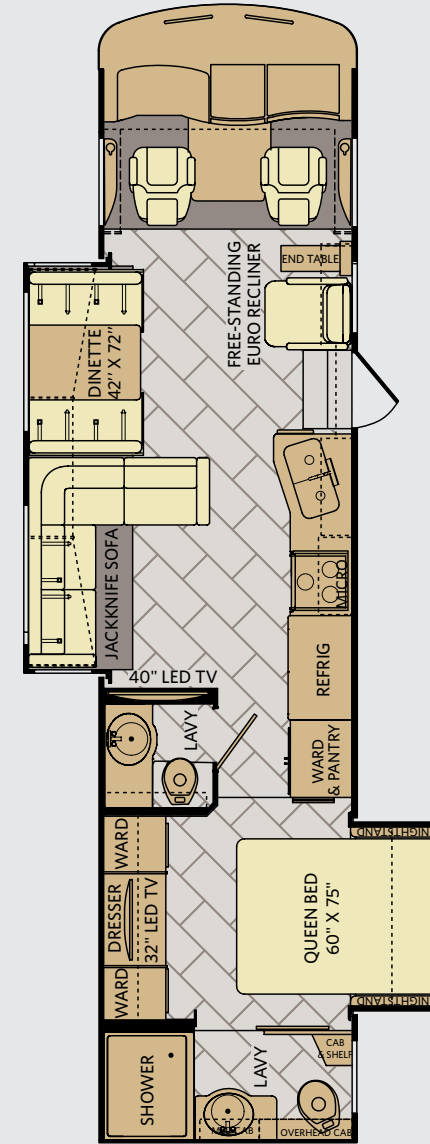
32VS

AVAILABLE OPTIONS: 087, 113, 192, 345,
490, 830, 833, 855



34A

AVAILABLE OPTIONS: 087, 093, 113, 126,
139, 830, 833, 852, 855



36L

AVAILABLE OPTIONS: 087, 093, 113, 126,
490, 830, 855

FLOOR PLAN OPTIONS



OPT. 087
FRONT 32"
LED TV



OPT. 093
EXT ENT
CENTER



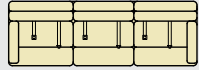
OPT. 113
3-BURNER
COOKTOP
W/OVEN



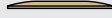
OPT. 126
WASHER
/DRYER



OPT. 139
ELECTRIC
FIREPLACE



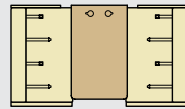
OPT. 192
SOFA SLEEPER
W/AIR MATTRESS
& FOOTREST



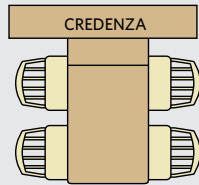
OPT. 345
MID-SHIP
40" LED TV



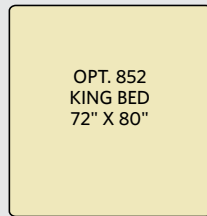
OPT. 490
FREE
STANDING
RECLINER



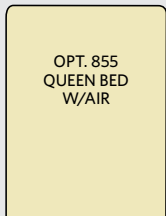
OPT. 830
FACING DINETTE



OPT. 833
FREE-STANDING DINETTE
WITH CREDENZA



OPT. 852
KING BED
72" X 80"



OPT. 855
QUEEN BED
W/AIR

Addendums

- GVWR (Gross Vehicle Weight Rating) is the maximum permissible weight of this fully loaded motorhome. The GVWR is equal to or greater than the sum of the (UVW) unloaded vehicle weight plus the (OCCC) occupant cargo-carrying capacity.
- GAWR (Gross Axle Weight Rating) is the maximum permissible loaded weight a specific axle is designed to carry.
- GCWR (Gross Combined Weight Rating) is the value specified by the motorhome manufacturer as the maximum allowable loaded weight of this motorhome with its towed vehicle. Towing and braking capacities may be different. Refer to Fleetwood and chassis manufacturer's manuals for complete information.
- Length measured from front bumper to rear bumper (excludes accessories).
- Excludes safety equipment and awnings.
- Motorhomes feature a body width over 96" which will restrict your access to certain roads. Before purchasing, you should research any state and/or province road laws which may affect your usage.
- Tank manufacturer's listed water capacity (WC). Actual propane capacity is 80% of water listing as required by the safety code.

† The chassis manufacturer recommends the installation of a supplemental brake control system to activate the brakes on the vehicle or trailer you are towing. Hitch receiver ratings expressed are maximum for the hitch receiver installed and may require the purchase of additional equipment that is dependent on the weight of the towed load. Consult with hitch receiver manufacturer for further information.

†† Minimum Towable Load is the available weight, up to GCWR, when the coach is fully loaded to maximum GVWR. However, if the coach is loaded to something less than maximum GVWR, that extra available weight can be added to your Towable Load. For example, if your coach is loaded to 1000lbs less than maximum GVWR, your Towable Load increases accordingly.

* UVW and OCCC are found on the label containing the federal certification tag in each RV.

CHASSIS

MODELS	32VS	34A	36L
Wheelbase (inches)	208"	208"	228"
GVWR (lbs) ¹	22,000	22,000	22,000
Front GAWR (lbs) ²	8,000	8,000	8,000
Rear GAWR (lbs) ²	15,000	15,000	15,000
GCWR (lbs) ³	26,000	26,000	26,000
Hitch Rating Weight (lbs) [†]	5,000	5,000	5,000
Tongue Weight (lbs) [†]	500	500	500
Fuel Capacity (gal)	80	80	80

POWER PLATFORM® CHASSIS

Model: Ford®
Engine: 6.8L Triton V10
Transmission: Ford, 5-Speed,
 Automatic w/Overdrive

Alternator: 175 Amp
Torque: 457 lb-ft @ 3,250 RPM
Horsepower: 362HP

DIMENSIONS & CAPACITIES

MODELS	32VS	34A	36L
Overall Length (inches) ⁴	33' 5"	34' 11"	36' 11"
Overall Height (with A/C)	12' 10"	12' 10"	12' 10"
Overall Width (maximum) ^{5, 6}	102"	102"	102"
Interior Height (maximum)	84"	84"	84"
Interior Width (maximum)	96"	96"	96"
Patio Awning Width	17'	17'	17'
Interior Storage (cu. ft.)	144	123	140
Exterior Storage (cu. ft.)	112	115	118
Fresh Water Holding Tank (gal)	80	80	80
Grey Water Holding Tank (gal)	58	58	58
Black Water Holding Tank (gal)	42	42	42
Appliance Propane Tank (gal) (WC) ⁷	25	25	25
Water Heater Tank (gal)	10	10	10

Southwind

WHY FLEETWOOD?



Quality

There's no cutting corners. Skilled craftsmen build every Fleetwood RV for maximum durability and longevity.



Trust

More people trust Fleetwood RV. After all, we've spent over 60 years perfecting motorhomes, earning the loyalty of generations of RVers.



Passion

We're truly passionate about the RV lifestyle. Fleetwood RV was founded by RV enthusiasts, and that tradition continues today.



Safety

You've got precious cargo. So we've engineered dozens of innovative safety features into our motorhomes to give you more peace of mind.



Service

Help is nearby with 24/7 emergency Fleetwood RV Trusted Roadside Assistance* And when you need an upgrade or repair, you'll find Fleetwood RV dealers all across North America ready to assist you.



Warranty

Exclusive RV OwnerCare** warranty. See your Fleetwood RV dealer for details.

* All 2016 Fleetwood RV Motorhomes include a 1-year emergency roadside assistance membership. For complete info, see your Fleetwood RV dealer.

FLEETWOOD RV



Visit FleetwoodRV.com

RV OWNERCARE**

Limited one-year/15,000-mile coach warranty and three-year/45,000-mile structural warranty, whichever occurs first, and it is fully transferable for the first 12 months. RV OWNERCARE is one of the RV industry's most comprehensive programs and includes systems, appliances, components and construction, with no deductible and no service charge. RV OWNERCARE coverage is provided by a company that will be around in the future to service your needs. See your nearest Fleetwood RV dealer for a full explanation of benefits and restrictions.

FLEETWOOD MOTORHOME ASSOCIATION

As a Fleetwood RV owner, you're invited to become a member of the Fleetwood Motorhome Association (FMA). Becoming a member is the perfect way to meet other Fleetwood owners who love to travel across America and share in the RV lifestyle. Visit the FMA website at www.fma4fun.org to learn more and join the fun.

CONTACT US

To locate a dealer near you, visit our website at www.fleetwoodrv.com or call 1-800-322-8216. We can also be contacted at Fleetwood RV Customer Relations, P.O. Box 1007, Decatur, IN 46733.

IMPORTANT—PLEASE READ: Product information, photography and illustrations included in this publication were as accurate as possible at the time of printing. For further product information and changes, please visit our website at www.fleetwoodrv.com or contact your local Fleetwood RV dealer. Prices, materials, design and specifications are subject to change without notice. All weights, fuel, liquid capacities and dimensions are approximate. Fleetwood RV has designed its recreational vehicles to provide a variety of uses for its customers. Each vehicle features optimal seating, sleeping, storage and fluid capacities. The user is responsible for selecting the proper combination of loads (i.e., occupants, equipment, fluids, cargo, etc.) to ensure that the vehicle's capacities are not exceeded.

YOUR LOCAL FLEETWOOD RV DEALER IS: