

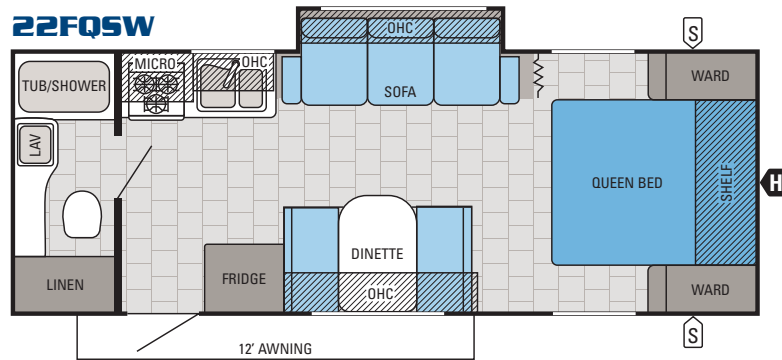
# JAY FEATHER ULTRA LITE SLX

**NEW**

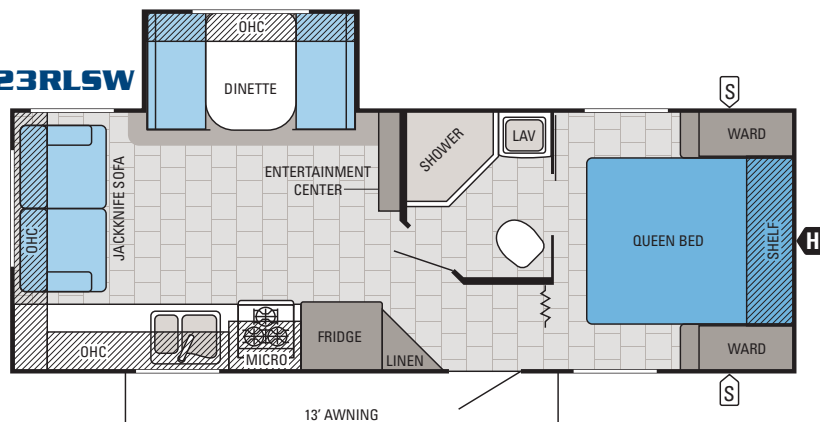
## KEY FEATURES

- 8' wide
- Plywood floor decking
- 6 gallon gas DSI water heater
- (2) outside speakers
- Outside shower
- Fender skirts
- (4) stabilizer jacks
- 13,500-BTU roof-mount A/C
- 30-gallon black tank
- 30-gallon grey tank
- 42-gallon fresh water tank
- (2) 20# propane tanks with cover
- 6 cu. ft. refrigerator (CVP)
- Power awning with LED light (CVP)
- Power tongue jack (CVP)
- 3-burner cooktop with oven
- Tub surround
- Double-bowl sink with high-rise faucet
- Aluminum rims (CVP)
- Optional spare tire and carrier
- Optional 15,000-BTU roof-mount A/C
- Denver Mattress

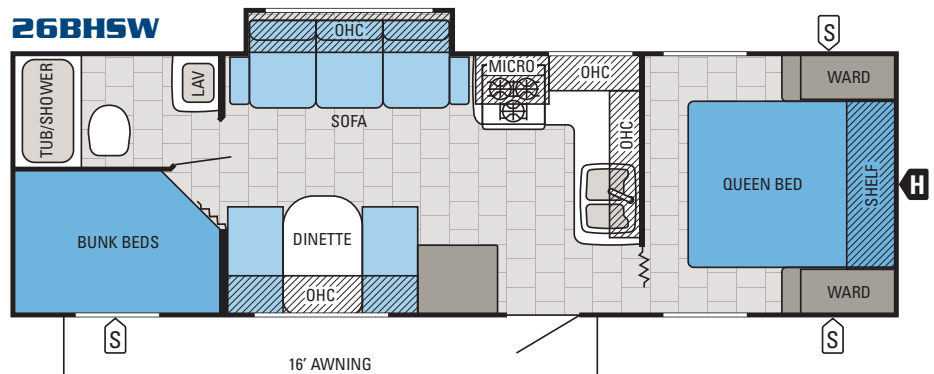
**22FQSW**



**23RLSW**



**26BHSW**



Generations of family fun.

# 8' WIDE MODELS

## JAY FEATHER SLX STANDARDS & OPTIONS (8' WIDE MODELS)

### STANDARD EXTERIOR EQUIPMENT

- TuffShell vacuum-bonded laminated sidewalls, front, rear and end walls
- Deluxe graphics package
- Magnum Truss Roof System
- One-piece seamless DiFlex II roof material
- Box tube-style frames with integrated A-Frame
- Marine-grade exterior speakers (2)
- Outside shower
- 13,500-BTU roof-mounted air conditioner
- ABS fender skirts
- Heavy-duty entrance step with no-slip treads
- G20 dark-tinted windows
- E-Z Lube axles
- Radial tires
- Impact-resistant wheel wells
- Front diamond plate
- Double-wide corner mold extrusions
- Radius-cornered entrance and baggage doors
- 30-amp service
- Stabilizer jacks (4)

### STANDARD INTERIOR EQUIPMENT

- Screwed-and-glued cabinetry
- Ball bearing drawer guides, 75-lb. capacity with full extension
- 3-burner cooktop range with oven
- Double-bowl sink with high-rise faucet
- High-definition laminate countertop with rounded bull-nose edging
- Plywood dinette, bunk and bed bases
- 4" high-density dinette cushions
- Diamondflor vinyl flooring
- Bathroom roof vent
- Bath skylight
- Tub surround
- Shower curtain
- Denver Mattress-brand bed and bunk mats

### CUSTOMER VALUE PACKAGE (MANDATORY)

- 6 cu. ft. Norcold refrigerator
- 6-gallon gas DSI Atwood water heater
- Aluminum rims
- Electric patio awning with LED light
- Electric tongue jack
- Microwave oven
- AM/FM stereo with MP3 input
- Water heater bypass

### OPTIONS

- Customer Value Package
- 15,000-BTU roof-mounted A/C
- Enclosed underbelly
- Spare tire & carrier

## JAY FEATHER SLX SPECIFICATIONS

FLOORPLAN	EXT. LENGTH	EXT. WIDTH	EXT. HEIGHT (WITH A/C)	INT. HEIGHT	UNLOADED VEHICLE WEIGHT (LBS.)	DRY HITCH WEIGHT (LBS.)	GROSS VEHICLE WEIGHT RATING (LBS.)	CARGO CARRYING CAPACITY (LBS.)	FRESH WATER CAPACITY (GAL.) (WITH WATER HEATER)	GRAY WASTEWATER CAPACITY (GAL.)	TOILET/BLACK WASTEWATER CAPACITY (GAL.)
22FQSW	26' 5"	96"	120"	78"	4,135	440	5,500	1,365	48	30.5	22.5
23RLSW	27' 5"	96"	128"	78"	4,535	475	5,995	1,460	48	30.5	22.5
26BHSW	30' 5"	96"	121"	78"	4,733	665	6,250	1,517	48	45	22.5

The weights of certain options and/or option packages are not included in the UVW listed in the specification charts.

**Unloaded Vehicle Weight (UVW):** Sometimes referred to as "Dry Weight," UVW means the typical weight of this trailer as built at the factory. The UVW, as used in product literature and other promotional materials, does not include cargo, fresh water, propane, options or dealer-installed accessories.

**Gross Vehicle Weight Rating (GVWR):** GVWR means the maximum permissible weight of the trailer, including the UVW plus passengers, personal items, all cargo, fluids, options, and dealer-installed accessories. The GVWR is equal to or greater than the sum of the UVW and the CCC.

**Cargo Carrying Capacity (CCC):** CCC means the maximum weight of all passengers, personal items, food, fresh water, propane, tools, other cargo and dealer-installed accessories that can be carried by the trailer. CCC is equal to or less than GVWR minus UVW. The addition of options will decrease the CCC.

**Hitch Weight (HW):** The hitch weight, as used in product literature and other promotional materials, does not include cargo, fresh water, propane gas, options or dealer-installed accessories. The addition of these types of items will either add to or subtract from the stated hitch weight. It is important for your safety and enjoyment that your tow vehicle be adequately sized and

equipped to tow and handle the GVWR of the RV you select. Review weights and rating of your tow vehicle and consult a competent advisor for questions or advice. Whether you are new to RVing or a veteran, get a feel for the performance of your tow vehicle before heading out on the roadways. When you performance of your tow vehicle before heading out on the roadways. When you tow an RV, you must drive differently than when you drive a single vehicle. Practice hooking up, driving, backing up and braking in a safe environment or seek out professional instruction. Jayco affixes a weight label to each RV which lists weight information for that vehicle. See SPECIFICATIONS chart above.



**FAMILY fun**  
starts with peace of mind

At Jayco, we build our RVs to handle every adventure, then we back our products with an industry-leading 2-year limited warranty. You won't find a better warranty in the business because the only strings we attach are those that deliver the ultimate in reliability. That's the Jayco difference. So go explore. We have the warranty that will follow you anywhere.

\*For a copy of our 2-year limited warranty with full terms and conditions, please contact your local Jayco dealer

**FREE** Roadside Assistance

Travel worry-free with Jayco's Customer First Roadside Assistance program, yours at no cost during the first year of ownership. The program is offered through Coach-Net, the country's largest RV emergency road service, and gives you immediate access to assistance.

The fun starts with your local Jayco dealer

Your local dealer

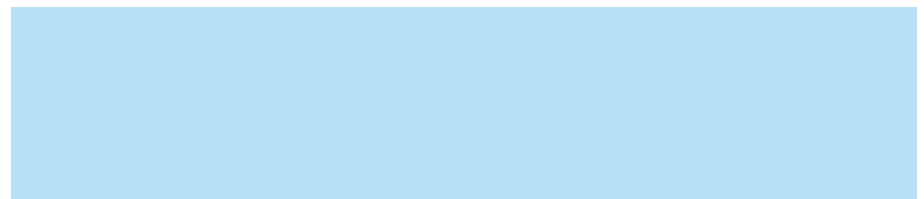


Generations of family fun.

Follow Jayco



Jayco, Inc., P.O. Box 460, Middlebury, IN 46540, [www.jayco.com](http://www.jayco.com) © **RVIA** See dealer for further information and prices. All information in this flyer is the latest available at the time of publication approval. Jayco reserves the right to make changes and to discontinue models without notice or obligation. RVs built for sale in Canada may differ to conform to Canadian codes. ©2014 Jayco, Inc. Printed in U.S.A. 2015 Jay Feather SLX Wide.cdr JM 11-14 V.3



From giving advice to selling and servicing products, we consider our loyal dealers the glue in our family bond. Establishing a solid relationship with your local Jayco dealer is a key component in the enjoyment of your new Jayco. By purchasing from a local dealer, you will have a convenient location for sales, parts and service support. We hope you consider them a part of your camping family.