



PINNACLE™

2016

GET AWAY  
#LETSJAYCO

2016 PINNACLE LUXURY FIFTH WHEEL



**2**  
YEAR  
WARRANTY



# #LETSJAYCO

When you travel with Jayco, fun is the only thing on the agenda. That's because we go the extra mile so you can live in the moment. From comfortable, amenity-packed floorplans to weather-shielding insulation and superior frame construction, you'll have everything you need to adventure every day and make yourself at home every night. Let's get away. Let's make it count. Let's Jayco—and make memories that last a lifetime.

## GENERATIONS OF FAMILY FUN



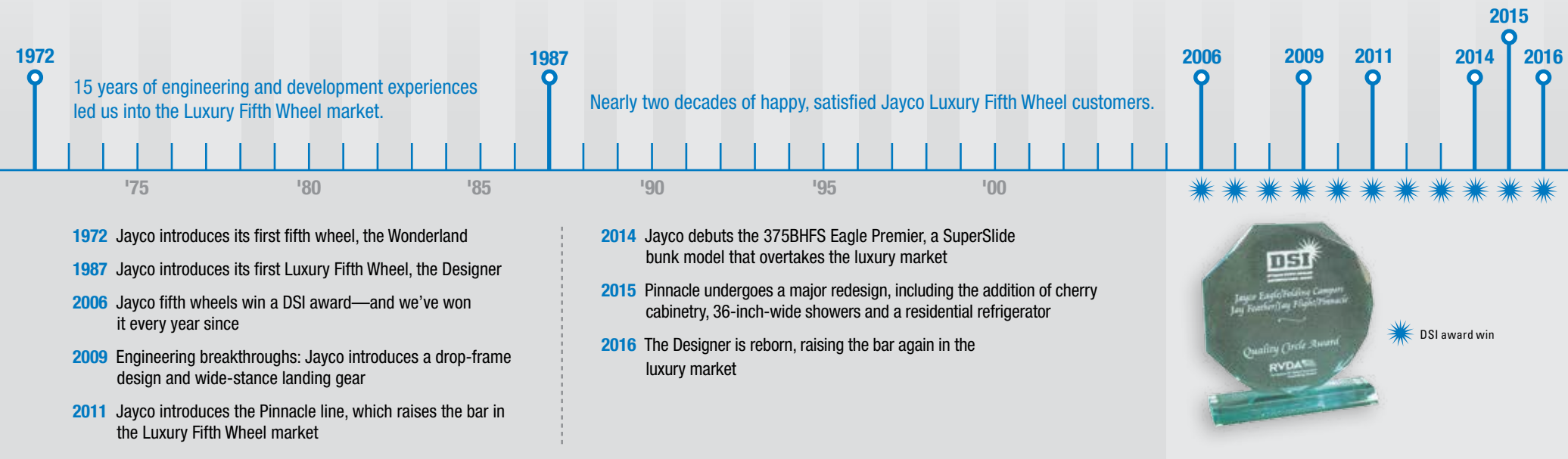
# PINNACLE

## LIVE THE LEGACY

When Jayco founder Lloyd Bontrager set out to build a better camping trailer nearly 50 years ago, he probably couldn't have imagined the lavish craftsmanship, awe-inspiring floorplans and stunning residential amenities we'd accomplish years later. Today, his legacy of excellence lives on—with Luxury Fifth Wheels that are as plush as they come.

### MORE THAN 40 YEARS OF ENGINEERING, LISTENING, LEARNING AND EVOLVING

Jayco has been building fifth wheels for nearly a half-century—and Luxury Fifth Wheels for almost 30 years.



SHARE YOUR PHOTOS AND STORIES ON SOCIAL MEDIA WITH [#LETSJAYCO](https://www.jayco.com/hashtag/letsjayco).



## LUXURY FIFTH WHEEL PACKAGE



1



2



3



4



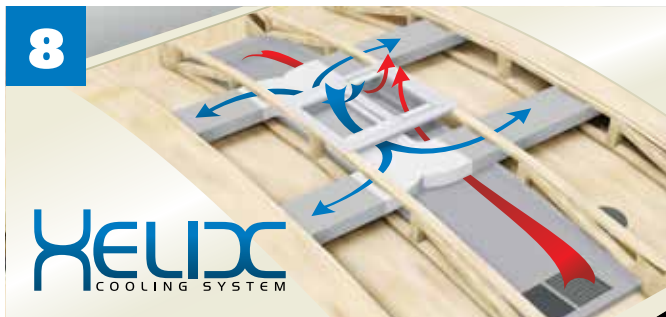
5



6



7



8



9



### Indulge and Impress

Premium features come standard, thanks to our Luxury Fifth Wheel and Pinnacle Advantage packages. They're the apex of towable comfort—where opulence meets unbeatable value. Now that's an indulgence you can feel good about.

### LUXURY FIFTH WHEEL PACKAGE:

- 6-point electric auto-leveling system (1)
- Backup camera prep; camera and monitor optional (2)
- Carefree® power awning with Flex Guard fabric shield (3)
- Indoor/outdoor central vacuum system with kick pan (4)
- Franklin™ American-made residential furniture (5)
- Magnum Frame System (6)
- Magnum Truss™ XL6 roof system (7)
- Helix Cooling System with Whisper Quiet technology (8)
- Quad-tread aluminum entrance steps (9)
- Bluetooth®/HDMI® high-output entertainment system
- Cargo accessory receiver
- Electric thermostatically controlled fireplace
- Keyless main entrance door
- LED exterior lighting
- MOR/ryde® pin box
- Oversized battery compartment
- Painted gelcoat fiberglass front cap
- Power kitchen vent with wall controls
- Sidewall and roof-mount solar prep
- Whole coach water purification system

# PINNACLE ADVANTAGE PACKAGE



## PINNACLE ADVANTAGE PACKAGE:

- MOR/ryde LRE4000™ suspension system (1)
- Dual sun shade and blackout roller shades in living room (2)
- Residential Natural Cherry hardwood cabinet doors, miter-cut with 3-inch rails (3)
- Oversized 36-inch-wide residential showers (4)
- Powered 50-amp cord reel (5)
- Remote control system for levelers, awnings, sliderooms and exterior lights (6)
- Gel 360—front cap, rear cap and sidewalls all gelcoat fiberglass
- Big-screen LED HDTVs in living areas
- Wood-mantle fireplace surround with hidden storage and pullout drawer
- 80-inch Jayco Luxury Sleep System memory-foam mattress
- Blackout roller shades in bedroom
- 32-inch LED HDTV in bedroom with integrated DVD player
- Sliding, free-standing table and 4 chairs
- Stainless steel convection microwave oven



36FBTS CABINETS



36FBTS ENTRANCE STEPS

# PINNACLE

## MAKE EVERY TRIP A TREAT

Fun has never been this deluxe. Step up to a new level of leisure with the Pinnacle luxury fifth wheel line. Relax on massaging theater seats, stay fully stocked with a spacious kitchen pantry and enjoy some privacy with premium blackout shades.



36FBTS TAILGATE TV



36FBTS BATH



36FBTS BEDROOM



36FBTS THEATER SEATING



36FBTS INTERIOR



38FLSA INTERIOR

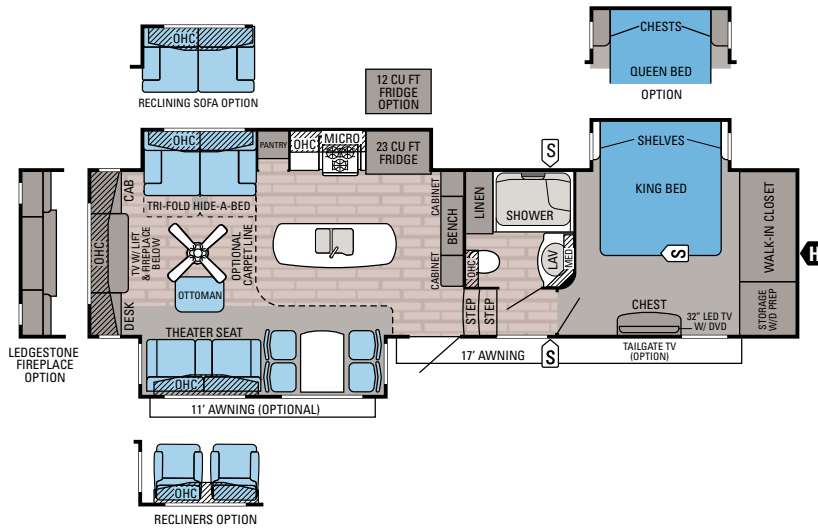


38FLSA KITCHEN



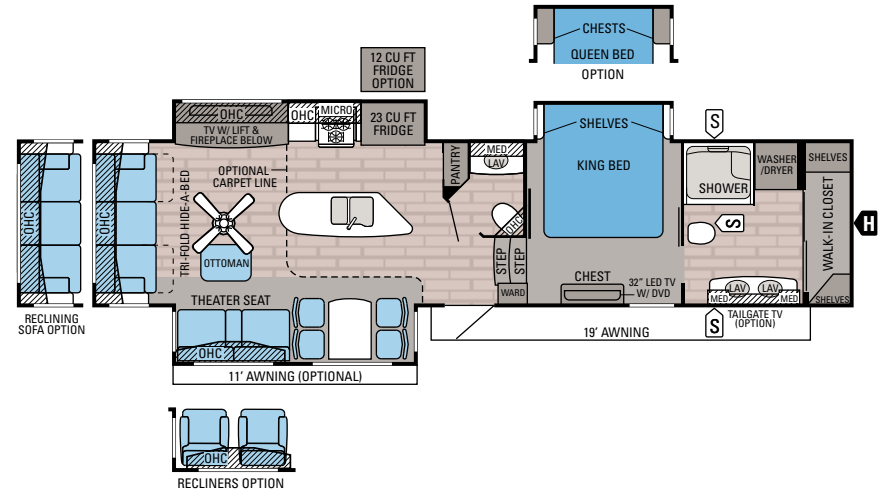
38FLSA BEDROOM

# PINNACLE FLOORPLANS



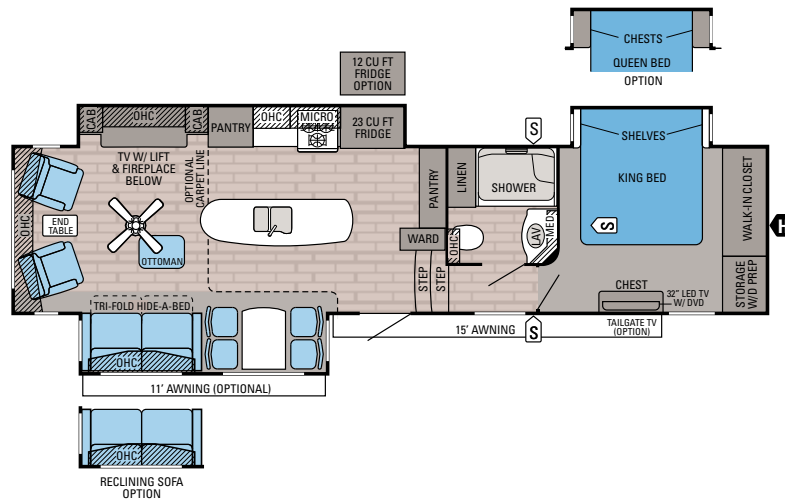
## PINNACLE | 31RETS

Ext. Length: 37' 8" Ext. Height: 160" Unloaded Wt. (lbs.): 12,420 Sleeps: 2-4



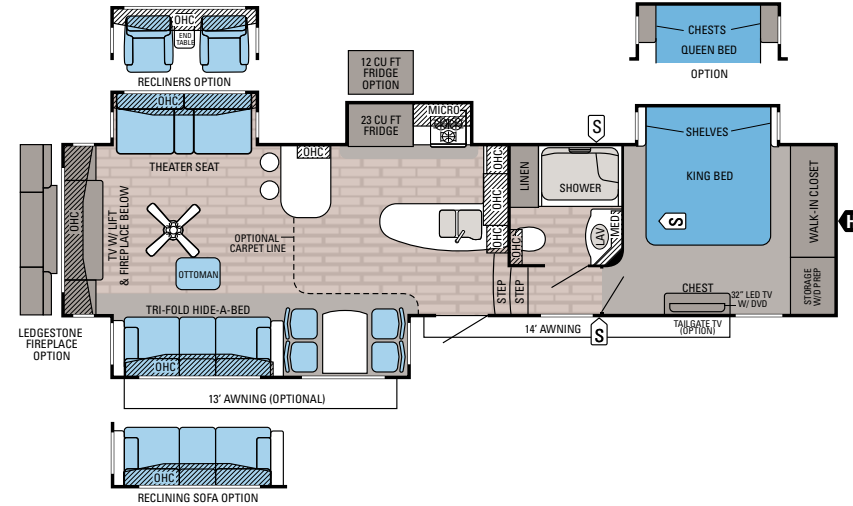
## PINNACLE | 36FBTS

Ext. Length: 40' 10" Ext. Height: 159" Unloaded Wt. (lbs.): 12,715 Sleeps: 2-4



## PINNACLE | 36KPTS

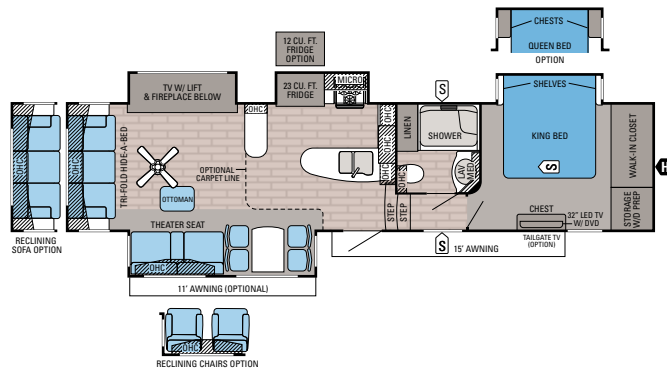
Ext. Length: 40' 4" Ext. Height: 160" Unloaded Wt. (lbs.): 12,790 Sleeps: 2-4



## PINNACLE | 36REQS

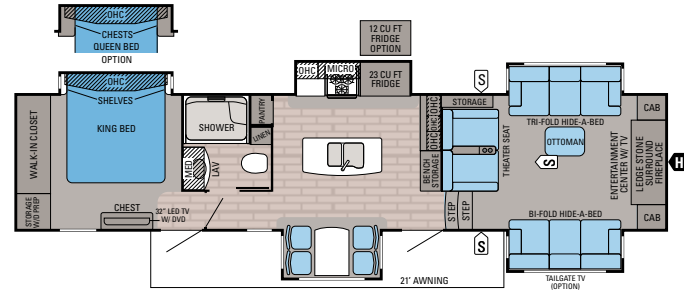
Ext. Length: 40' 6" Ext. Height: 159" Unloaded Wt. (lbs.): 12,990 Sleeps: 2-4





**Pinnacle | 36RSQS**

Ext. Length: 40' 8" Ext. Height: 159" Unloaded Wt. (lbs.): 12,865 Sleeps: 2-4

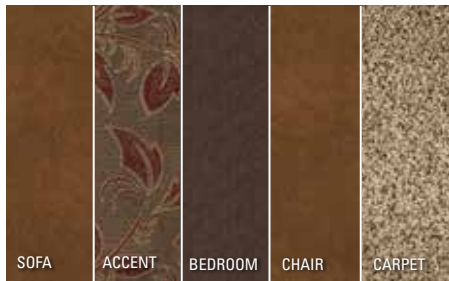


**Pinnacle | 38FLSA**

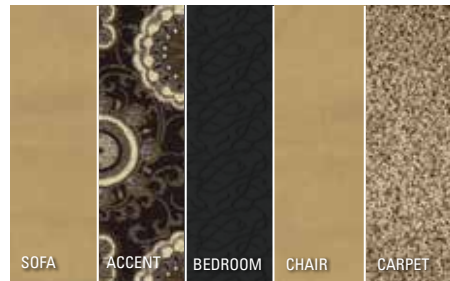
Ext. Length: 42' 1" Ext. Height: 161" Unloaded Wt. (lbs.): 13,505 Sleeps: 6

**INTERIOR DÉCOR**

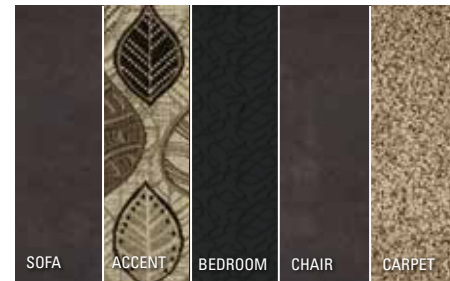
**CABERNET**



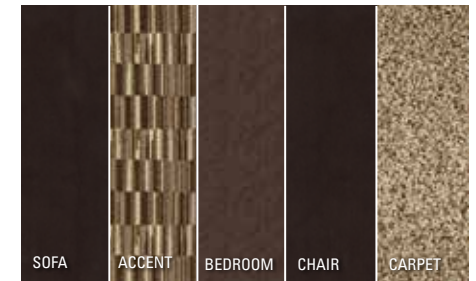
**CHAMPAGNE**



**ESPRESSO**



**WALNUT**



**Pinnacle SPECIFICATIONS**

| MODELS | DIMENSIONS |                       |                         |                |                            | WEIGHTS (LBS.)                              |                               |                         |                  | TANKS (GALS.)               |                         |  |                           |                            |
|--------|------------|-----------------------|-------------------------|----------------|----------------------------|---|-------------------------------|-------------------------|------------------|-----------------------------|-------------------------|--|---------------------------|----------------------------|
|        | FLOORPLAN  | TOTAL EXTERIOR LENGTH | EXTERIOR TRAVEL LENGTH* | EXTERIOR WIDTH | EXTERIOR HEIGHT (WITH A/C) | EXTERIOR HEIGHT (WITH OPTIONAL BEDROOM A/C) | INTERIOR HEIGHT (UPPER LEVEL) | UNLOADED VEHICLE WEIGHT | DRY HITCH WEIGHT | GROSS VEHICLE WEIGHT RATING | CARGO CARRYING CAPACITY | FRESH WATER CAPACITY (INCLUDES WATER HEATER) | GREY WASTE WATER CAPACITY | BLACK WASTE WATER CAPACITY |
| 31RETS |            | 37' 8"                | 36' 2"                  | 102"           | 160"                       | 160"  | 83"                           | 12,420                  | 2,510            | 15,250                      | 2,830                   | 85   | 87                        | 50                         |
| 36FBTS |            | 40' 10"               | 39' 4"                  | 102"           | 159"                       | 160"  | 83"                           | 12,715                  | 2,555            | 15,950                      | 3,235                   | 85   | 87                        | 87                         |
| 36KPTS |            | 40' 4"                | 38' 10"                 | 102"           | 160"                       | 160"  | 83"                           | 12,790                  | 2,715            | 15,950                      | 3,160                   | 85   | 87                        | 50                         |
| 36REQS |            | 40' 6"                | 39' 0"                  | 102"           | 159"                       | 159"  | 83"                           | 12,990                  | 2,775            | 15,950                      | 2,960                   | 85   | 85                        | 50                         |
| 36RSQS |            | 40' 8"                | 39' 3"                  | 102"           | 159"                       | 161"  | 83"                           | 12,865                  | 2,765            | 15,950                      | 3,085                   | 85   | 85                        | 50                         |
| 38FLSA |            | 42' 1"                | 40' 8"                  | 102"           | 161"                       | 161"  | 83"                           | 13,505                  | 3,095            | 15,950                      | 2,445                   | 85   | 107                       | 37                         |

\*Distance from the pin box to the bumper; total exterior length may be longer.

**Unloaded Vehicle Weight (UVW):** Sometimes referred to as "Dry Weight," UVW means the typical weight of this trailer as built at the factory. The UVW, as used in product literature and other promotional materials, does not include cargo, fresh water, propane, options or dealer-installed accessories.

**Gross Vehicle Weight Rating (GVWR):** GVWR means the maximum permissible weight of the trailer, including the UVW plus passengers, personal items, all cargo, fluids, options, and dealer-installed accessories. The GVWR is equal to or greater than the sum of the UVW and the CCC.

**Cargo Carrying Capacity (CCC):** CCC means the maximum weight of all passengers, personal items, food, fresh water, propane, tools, other cargo and dealer-installed accessories that can be carried by the trailer. CCC is equal to or less than GVWR minus UVW. The addition of options will decrease the CCC.

**Hitch Weight (HW):** The hitch weight, as used in product literature and other promotional materials, does not include cargo, fresh water, propane gas, options or dealer-installed accessories. The addition of these types of items will either add to or subtract from the stated hitch weight.

It is important for your safety and enjoyment that your tow vehicle be adequately sized and equipped to tow and handle the GVWR of the RV you select. Review weights and rating of your tow vehicle and consult a competent advisor for questions or advice. Whether you are new to RVing or a veteran, get a feel for the performance of your tow vehicle before heading out on the roadways. When you tow an RV, you must drive differently than when you drive a single vehicle. Practice hooking up, driving, backing up and braking in a safe environment or seek out professional instruction. Jayco affixes a weight label to each RV which lists weight information for that vehicle. See specifications chart above.

**EXTERIOR OPTIONS**



STANDARD GRAPHICS



PREMIUM PAINT OPTION

**LUXURY FIFTH WHEEL PACKAGE**

6-point electric auto-leveling system  
 Backup camera/monitoring system prep  
 Carefree power awning with Flex Guard fabric shield  
 Indoor/outdoor central vacuum system with kick pan  
 Franklin American-made residential furniture  
 Magnum Frame System  
 Magnum Truss XL6 roof system  
 Helix Cooling System with Whisper Quiet technology  
 Quad-tread aluminum entrance steps  
 Bluetooth/HDMI high-output entertainment system  
 Cargo accessory receiver  
 Electric thermostatically controlled fireplace  
 Keyless main entrance door  
 LED exterior lighting  
 MOR/ryde pin box  
 Oversized battery compartment  
 Painted gelcoat fiberglass front cap  
 Power kitchen vent with wall controls  
 Sidewall and roof-mount solar prep  
 Whole coach water purification system

**PINNACLE ADVANTAGE PACKAGE**

MOR/ryde LRE4000 suspension system  
 Gel 360 – front cap, rear cap and sidewalls all gelcoat fiberglass  
 Big-screen LED HDTVs in living areas  
 80-inch Jayco Luxury Sleep System memory-foam mattress  
 Dual sun shade and blackout roller shades in living areas  
 32-inch LED HDTV in bedroom with integrated DVD player  
 Residential Natural Cherry hardwood cabinet doors, miter-cut with 3-inch rails  
 Oversized 36-inch-wide residential showers  
 Powered 50-amp cord reel  
 Sliding, free-standing table and 4 chairs  
 Stainless steel convection microwave oven  
 Remote control system for levelers, awnings, sliderooms and exterior lights  
 Wood-mantle fireplace surround with hidden storage and pullout drawer  
 Blackout roller shades in bedroom

**CUSTOMER VALUE PACKAGE**

15,000-BTU central A/C  
 20-gallon refresh rate gas/electric auto-ignition  
 Atwood water heater  
 Arched interior ceiling  
 Bath skylight  
 Bathroom power vent  
 Bedspread  
 Under-bed floor safe  
 Oversized folding exterior grab handle  
 Frameless G20 dark-tinted windows  
 LED interior lighting  
 Security lights  
 Slam-latch™ baggage doors  
 Sofa and bed pillows  
 Solid-surface kitchen countertops

**STANDARD EXTERIOR EQUIPMENT**

Wide-body, 102-inch frame  
 Wide-stance front landing gear  
 TuffShell™ vacuum-bonded, laminated walls  
 Climate Shield™:  
 • Enclosed, insulated, heated underbelly  
 • High-BTU-output furnace  
 • Astro-Foil™ in roof and floors  
 Aerodynamic front and rear cap with LED lights  
 Seamless roof covering  
 10-inch I-class cambered structural steel I-beams  
 16-inch radial tires  
 7,000-pound axles  
 Completely enclosed and protected slideout mechanisms  
 Frameless, dark-tinted, safety-glass windows  
 30-inch x 78-inch entry door with oversized window  
 Exterior marine-grade speakers (2)  
 Front awning arm convenience outlet  
 ExpansiveView opera-style dining area windows  
 Enclosed, protected basement drop-frame  
 Cable TV and outlet in basement  
 Convenient dual LP compartment (60 pounds total) on off-door side  
 Door-side compartment prepped for third 30-pound LP bottle  
 Stor-Galore™ pass-through basement storage with Slam-latch and strut assist  
 Heated, enclosed Uni-Dock™ utility center  
 50-amp power service

40,000-BTU furnace  
 75-gallon fresh water tank  
 50-gallon black tank capacity minimum (n/a on 38FLFS, 38FLSA)  
 Cable/satellite prep  
 Digital TV antenna  
 Outside grill prep  
 Under-mounted spare tire  
 Roof ladder  
 Hitch light  
 Upperdeck slideout convenience light  
 EZ-Stow™ – cargo area sliding storage stray  
 EZ-Cord™ – cargo area extension cord access port

**STANDARD INTERIOR EQUIPMENT**

Custom residential miter-cut cherry cabinet doors with hidden hinges  
 Hardwood cherry cabinet stiles  
 Hardwood slideout fascias  
 Residential-style pantry with pull-out drawers and trash can storage (select models)  
 Half-barrel hidden storage cabinet (where available)  
 Steel ball-bearing drawer guides, 75-pound capacity with full extension  
 Large, split, under-mounted, stainless steel sink  
 Residential-grade, pull-out kitchen faucet  
 Water heater bypass  
 23-cubic-foot residential refrigerator with water/ice in door  
 1,000-watt inverter  
 Flush-mounted, oversized, 21-inch oven with recessed glass cover  
 Residential-grade wood plank vinyl flooring  
 Shaw® R2X stain-resistant residential carpeting  
 Toe-kick kitchen lighting  
 90-amp power center with Charge Wizard®  
 Backlit command center for switches  
 Closeable and directional A/C vents  
 Prep for second A/C – prewired and tied into main ducting  
 Tri-fold hide-a-bed sofas with ottoman  
 Ceiling fan (n/a on 38FLSA)  
 Class A-style hardwood ceiling mantle with LED accent lighting  
 LED ceiling lights throughout  
 6-foot-6-inch-tall living area slideouts  
 Porcelain bath stool with foot flush  
 Under-mounted stainless steel bath lav sink  
 Robe hooks in bath  
 Hardwood headboard

Full-trunk, under-bed storage  
 Walk-in-style front closet with dual hanging rods and cedar lining  
 Mullion-style front wardrobe doors  
 Washer/dryer prep (accommodates stackable unit)  
 Oversized bedroom dresser storage  
 Bedroom slide fascia built-in night stand storage system

**OPTIONS**

Customer Value Package with 15,000-BTU central A/C with heat pump  
 Queen bed  
 Ledgestone fireplace surround with 58-inch LED TV (31RETS, 36REQS)  
 Carpet in the living area (n/a on 38FLSA)  
 Reclining main sofa (n/a on 38FLSA)  
 Two recliners in lieu of theater seats (select models)  
 Wireless backup camera/monitoring system  
 39-inch LED tailgate TV – in cargo area on sliding bracket  
 G-rated Goodyear® tires and rims (16 inch)  
 Second 15,000-BTU A/C (low-profile), tied into dual-duct system  
 Third low-profile A/C in front living room  
 Generator prep  
 5,500-watt gas generator  
 Premium paint package  
 Thermal pane tinted safety glass windows  
 Second power awning (n/a on 38FLSA)  
 Slideout awning covers  
 Weber® Q® Electric Grill and portable stand  
 Outside gas grill  
 12-cubic-foot refrigerator

--- See pages 4-5 for details on the Luxury Fifth Wheel and Pinnacle Advantage packages ---

# LET'S JAYCO—AND LEAVE OUR WORRIES BEHIND.



## THE JAYCO DIFFERENCE

When you go with Jayco, you get one of the industry's strongest frames and rock-solid construction.

- 1. Vacuum-bonded walls and Gel 360 premium gelcoat fiberglass exteriors** for better protection from the elements
- 2. Magnum Truss XL6 Roof System** withstands 4,500 pounds—50 percent more than other roofs
- 3. Welded aluminum frame** for a durable, lightweight structure
- 4. Double layer of fiberglass insulation** behind the front cap, plus Flexfoil® and fiberglass insulation in the floor to provide extra warmth where it's needed most—in the bedroom

**5. Painted gelcoat fiberglass front cap** withstands the rigors of the road with infused paint and gel coating, plus ¼-inch plywood bracing for additional support—not typically found on competing fifth wheels

**6. MOR/ryde LRE4000 rubberized suspension system** provides smoother towing and better protection from damaging road shock

**7. Helix Cooling System with Whisper Quiet technology**

**8. 6-point electric leveling system**

**9. Carefree power awning** with Flex Guard fabric shield

**10. Quad-tread aluminum entrance steps**

We know that your family fun rides on our commitment to quality. So we go the extra mile to make products that last—and stand behind them longer than anyone in the business.



## JAYCO'S ROOF **VS** OTHER ROOFS



4,500 POUNDS ON A JAYCO ROOF VS. OTHER ROOFS

## THE MAGNUM TRUSS XL6 ROOF SYSTEM **50 percent stronger**

- 11. Keyless main entrance door**
- 12. Cargo accessory receiver**
- 13. Sidewall and roof-mount solar prep**
- 14. MOR/ryde pin box**
- 15. Magnum Frame System**



## CLIMATE SHIELD

**Extend your camping season with the Jayco Climate Shield.** It protects against extreme heat and extreme freezing—even in temperatures as high as 100 degrees or as low as zero degrees (Fahrenheit).\*

LIVING ROOM



KITCHEN



BATHROOM



HOLDING TANK



BEDROOM

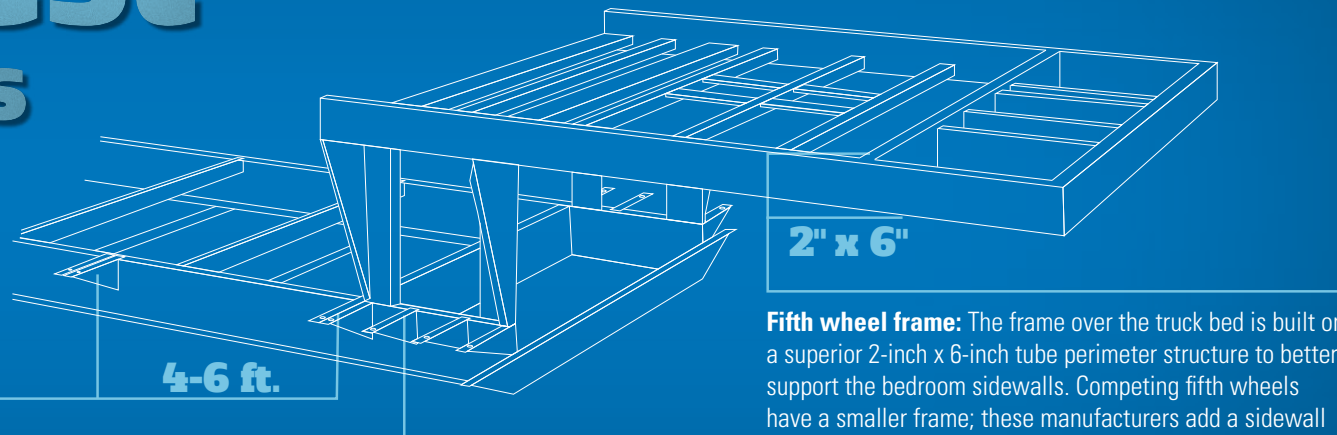


\*Pinnacle was tested in zero degrees F and 100 degrees F weather over an extended period of time in a controlled environment and all functions of the coach were fully operational. Testing was done in a completely controlled environment; therefore, temperatures during testing may not represent actual temperatures in nature, and cannot account for elements such as wind or moisture. In actual use, unit may not perform as well. Supplier of cooling components does not guarantee anything better than 20 degrees difference from ambient temperature. In addition, outside components are subject to freezing and require steps to properly insulate. Jayco's warranty does not cover damage caused by freezing. To learn more about Climate Shield and testing done by Jayco, visit [www.jayco.com](http://www.jayco.com).

# WE START WITH ONE OF THE INDUSTRY'S **strongest** foundations

Many competitors modify or weld stock frames, which can weaken the integrity of your foundation. Jayco's custom-manufactured frames offer higher strength and durability.

**Full-width outriggers:** We build on full-width outriggers that are spaced 4-6 feet apart (vs. 8 feet) to better support the weight of the wall.



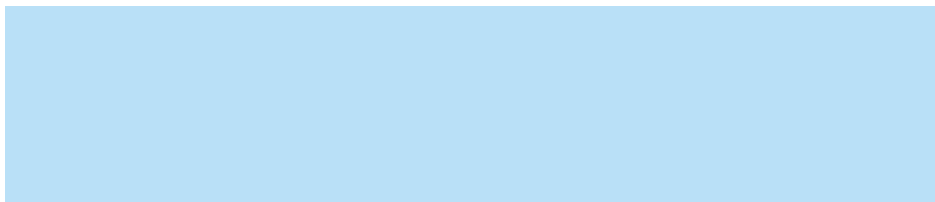
**I-class cambered structural steel I-beams:** Jayco uses a unique molded, one-piece design to prevent unit from twisting; competing three-piece I-beams can warp over time at the welded seams.

**Fifth wheel frame:** The frame over the truck bed is built on a superior 2-inch x 6-inch tube perimeter structure to better support the bedroom sidewalls. Competing fifth wheels have a smaller frame; these manufacturers add a sidewall support seam to compensate for expansion joints.

Learn more at [StrongFoundation.Jayco.com](http://StrongFoundation.Jayco.com)



## Meet your Jayco Dealer



We work hard—so you can play hard. From finding the perfect Jayco for your family to providing flexible financing options and full-service support, we're here to help.

## Follow Jayco



**Jayco, Inc., P.O. Box 460, Middlebury, IN 46540, [www.jayco.com](http://www.jayco.com)** See dealer for further information and prices. All information in this brochure is the latest available at the time of publication approval. Jayco reserves the right to make changes and to discontinue models without notice or obligation. Photos in this brochure may show optional equipment and props for photography purposes. RVs built for sale in Canada may differ to conform to Canadian codes. ©2015 Jayco, Inc. 0915-50K Printed in U.S.A.

**2**  
YEAR  
WARRANTY

**FREE**

ROADSIDE  
ASSISTANCE

Travel with confidence, with our industry-leading, bumper-to-front limited warranty and a year's access to Coach-Net™—the country's largest RV emergency road service.

For a copy of our 2-year limited warranty with full terms and conditions, please contact your local Jayco dealer.

**eco** advantage™

**Jayco's long-term commitment to generations of family fun**

**After four years of increased efforts to eliminate waste, conserve energy and increase recycling, we've come a long way in building RVs that are not only better for your family—but also better for the planet. Learn more at [Jayco.com/EcoAdvantage](http://Jayco.com/EcoAdvantage)**