

2016

ALLEGRO RED®

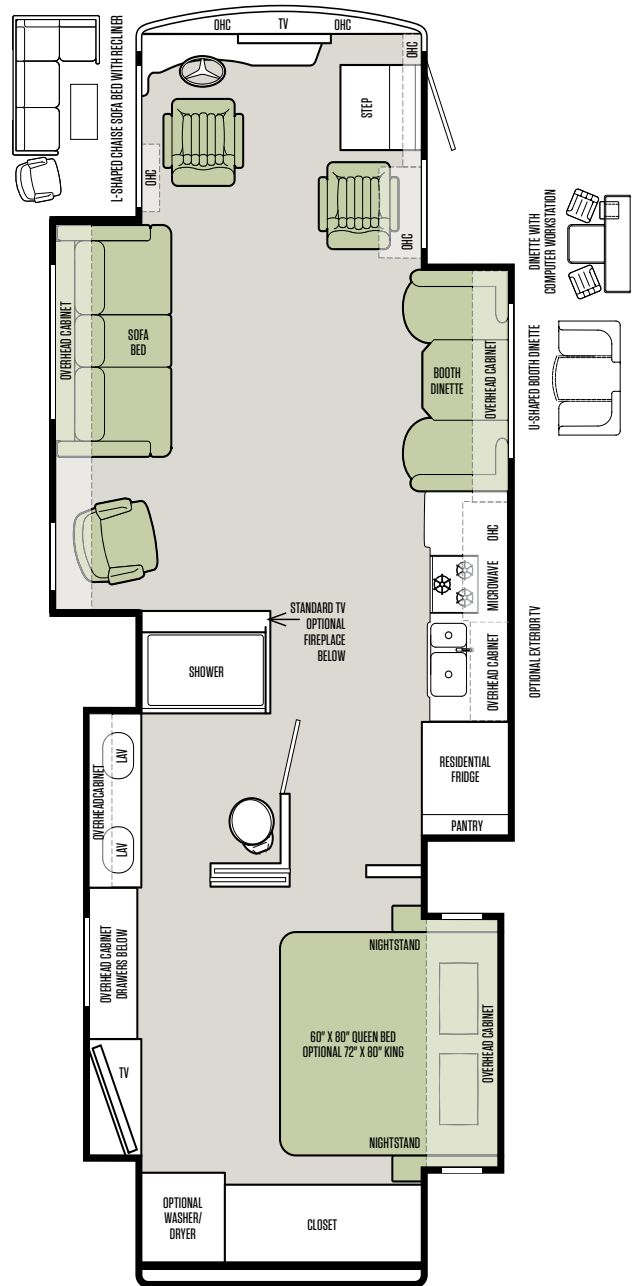
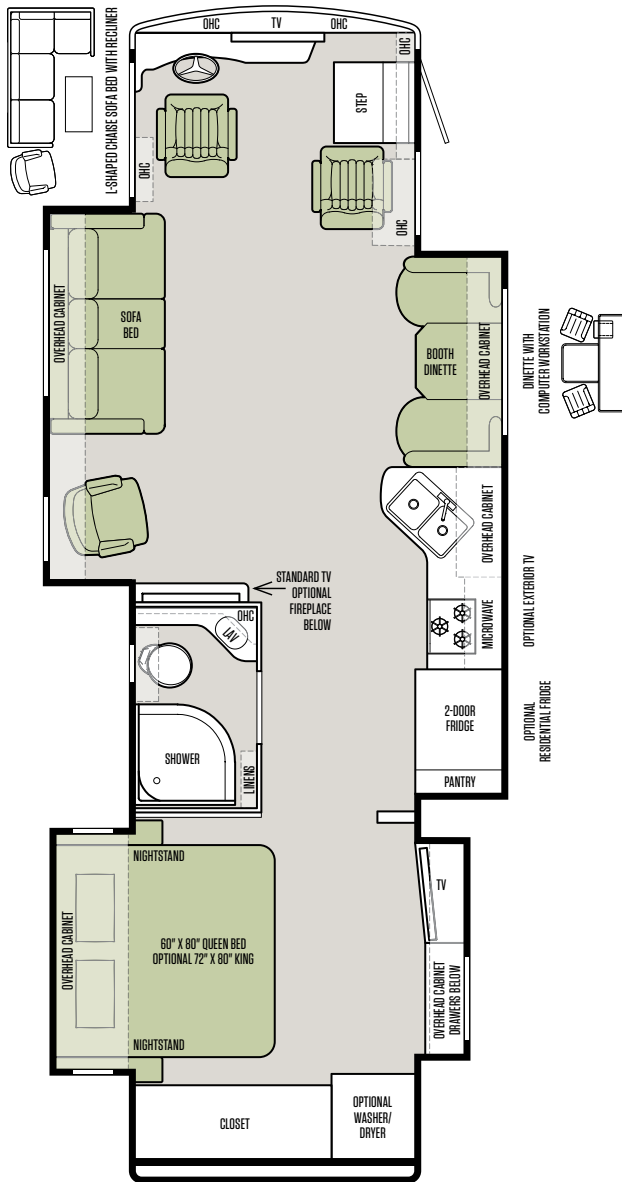


TIFFIN
MOTORHOMES

Tiffin floor plans: Thoughtful in every detail and in every dimension.

33 AA

37 PA



FLOOR PLANS

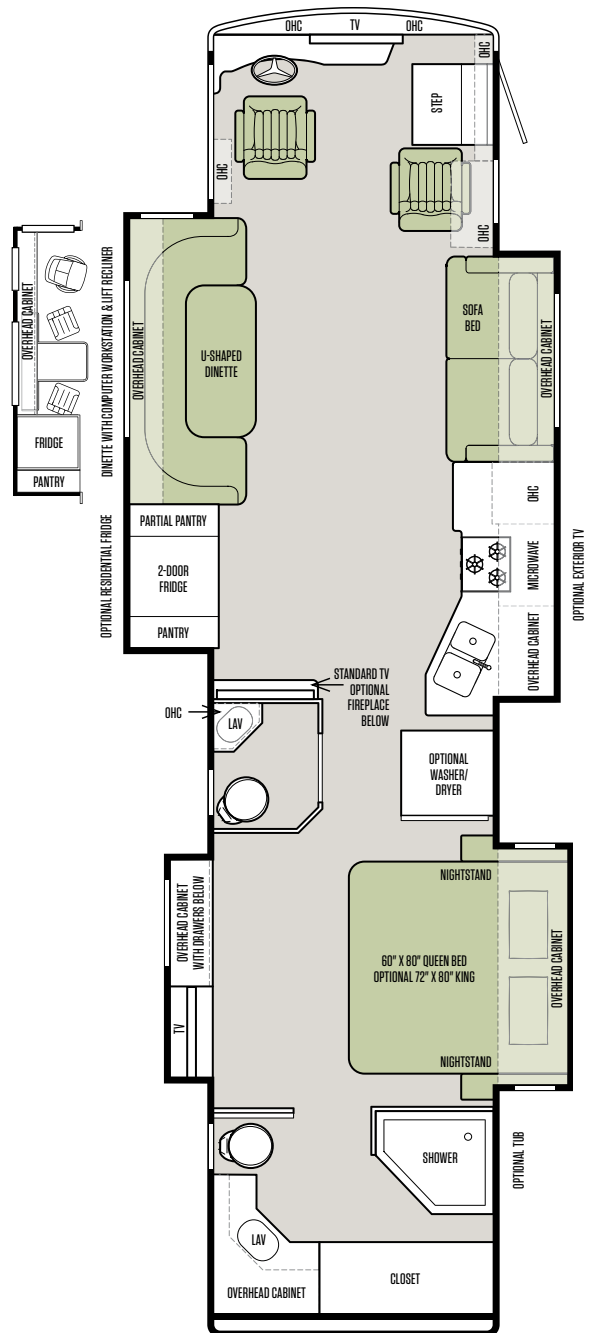


The design of every Tiffin floor plan must meet four essential criteria:
Maximum space. **Optimal organization.** **Relaxation plus.** **Elegant atmosphere.**
MORE plans offer your family the most comfortable layout for life on the road.

38 QBA



38 QRA



Note: If optional furniture combinations are selected, window locations may vary from diagram shown.

Now it's time to personalize your coach.

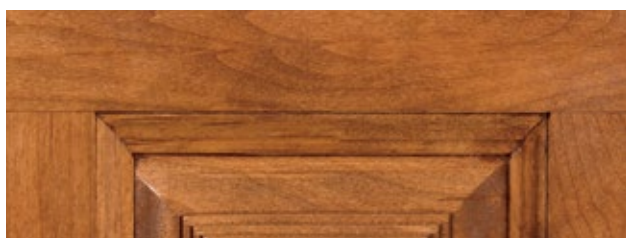
1

Start with our handcrafted hardwood cabinetry available in your choice of luxury finishes: Cordovan, English Chestnut or Mocha.

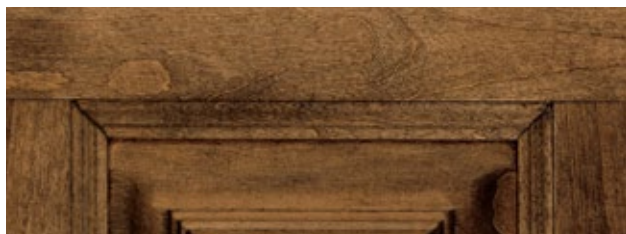
CABINETS



CORDOVAN

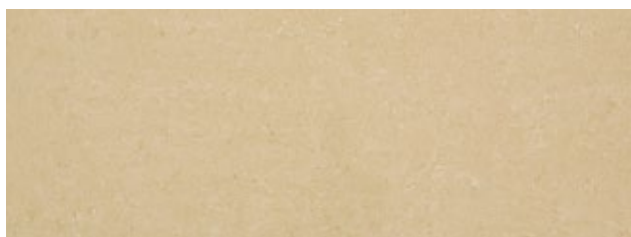


ENGLISH CHESTNUT

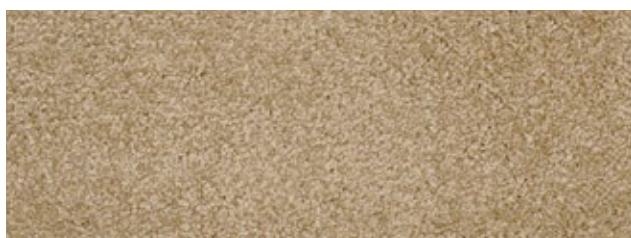


MOCHA

STANDARD FLOORING



TILE



CARPET

2

Then, add texture with your choice of designer fabric suites: Cocoa, Irongate, or Vanilla Bean. All fabrics are treated for stain resistance.

COCOA

LIVING AREA & KITCHEN



PILLOWS



VALANCE

KITCHEN



BACKSPLASH

COUNTERTOP

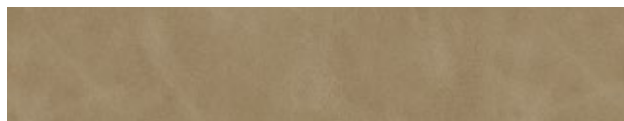


STANDARD



UPGRADE

SOFA & COCKPIT SEATS



STANDARD LEATHER

BEDROOM



INTERIOR DÉCOR

Express yourself by choosing fine appointments, from cabinet finishes and flooring to fabric textures for every interior. In the 2016 Allegro RED you'll be able to go in style no matter where you go.

IRONGATE

LIVING AREA & KITCHEN



PILLOWS



VALANCE

KITCHEN COUNTERTOP



BACKSPLASH



STANDARD



UPGRADE

SOFA & COCKPIT SEATS



STANDARD LEATHER

BEDROOM

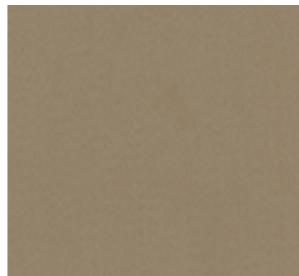


VANILLA BEAN

LIVING AREA & KITCHEN



PILLOWS



VALANCE

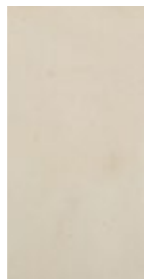
KITCHEN COUNTERTOP



BACKSPLASH



STANDARD



UPGRADE

SOFA & COCKPIT SEATS



STANDARD LEATHER

BEDROOM



EXTERIOR DÉCOR

FULL-BODY PAINT SCHEMES

PREMIUM PAINT SYSTEM

Our eight-step full-body paint system features premium grade paints sealed with four layers of superclear coat with ultraviolet protection. An additional layer of scratch-resistant plastic coating protects the front of the coach, stairwell, and entry door lock.



MAROON CORAL



SILVER SAND



OCEANSIDE



SUNLIT SAND



ROCKY MOUNTAIN BROWN



WHITE MAHOGANY

AUTOMOTIVE

- Standard on All Models:**
- Raised Rail Chassis Frame
 - Full Air Brakes
 - Air Ride Suspension
 - Exhaust Brake

CHASSIS OPTIONS

Freightliner® Rear Engine Diesel Chassis:	33 AA	37 PA	38 QBA	38 QRA
Cummins ISB 6.7-liter Electronic Diesel, Turbocharged, Aftercooled Engine	S	S	S	S
Allison 2500 MH 6-speed Automatic Transmission with Lock-up	S		S	S
Peak HP 340 HP @ 2,600 RPM	S		S	S
Peak Torque (lb. – Ft. Max Net) 660 @ 1,600 RPM	S		S	S
GAWR – Front	11,000 lb	340 HP Engine	11,000 lb	11,000 lb
GAWR – Rear	18,500 lb	Not	18,500 lb	18,500 lb
GWR	29,500 lb	Available	29,500 lb	29,500 lb
GCWR	33,000 lb	On	33,000 lb	33,000 lb
Wheel Base	198"	This	252"	252"
Tire Size	275/80R22.5	Model	275/80R22.5	275/80R22.5
Fuel Tank (Gallons) – Dual Fuel Fill	100		100	100
DEF Tank* (Gallons)	13		13	13
Alternator Amps	160		160	160
Trailer Hitch Capacity	5,000 lb		5,000 lb	5,000 lb
	33 AA	37 PA	38 QBA	38 QRA
Allison 3000 MH 6-speed Automatic Transmission with Lock-up	O	S	O	O
Peak HP 360 HP @ 2,600 RPM	O	S	O	O
Peak Torque (lb. – Ft. Max Net) 800 @ 1,800 RPM	O	S	O	O
GAWR – Front	12,000 lb	12,000 lb	12,000 lb	12,000 lb
GAWR – Rear	20,000 lb	20,000 lb	20,000 lb	20,000 lb
GWR	32,000 lb	32,000 lb	32,000 lb	32,000 lb
GCWR	42,000 lb	42,000 lb	42,000 lb	42,000 lb
Wheel Base	198"	252"	252"	252"
Tire Size	275/80R22.5	275/80R22.5	275/80R22.5	275/80R22.5
Fuel Tank (Gallons) – Dual Fuel Fill	100	100	100	100
DEF Tank* (Gallons)	13	13	13	13
Alternator Amps	160	160	160	160
Trailer Hitch Capacity	10,000 lb	10,000 lb	10,000 lb	10,000 lb

*Diesel Exhaust Fluid (DEF) is the active component used in Selective Catalytic Reduction (SCR) engines to reduce nitrogen oxide emissions by 90% to meet EPA standards.

WEIGHTS & MEASURES

Overall:	33 AA	37 PA	38 QBA	38 QRA
Overall Length (Approximate**)	35' 2"	39' 2"	39' 8"	39' 8"
Overall Height with Roof Air (Maximum)	12' 10"	12' 10"	12' 10"	12' 10"
Interior Height	84"	84"	84"	84"
Overall Width	101"	101"	101"	101"
Interior Width	96"	96"	96"	96"
Fresh Water (Gallons)	90	90	90	90
Black Water (Gallons)	50	50	50	50
Grey Water (Gallons)	70	70	70	70
LPG Tank (Gallons; can only be filled to 80% capacity)	24	24	24	24
Basement Storage (Cubic Feet – Approximate)	83.75	119	160	160
Minimum Garage Height	13'	13'	13'	13'

**The approximated coach lengths do not include side-view mirrors and rear ladders.

COCKPIT

- Standard on All Models:**
- Tilt Steering Wheel
 - Manual Solar & Privacy Shades on Side Windows
 - USB Dash Receptacle
 - Dual Dash Fans
 - Power Halo Leatherette Driver & Passenger Seats
 - Fire Extinguisher
 - Wood Drawers in Dash
 - Power Solar & Privacy Windshield Shades
 - Adjustable Seatbelt Brackets
 - Lighted Instrument Panel
 - Satellite-Ready Radio (Subscription Required)
 - Power Passenger Seat Footrest
 - CD Player & AM/FM Stereo
 - 12 V Dash Receptacle
 - Overhead TV
 - 12 V Disconnect Switch

Available Options:	33 AA	37 PA	38 QBA	38 QRA
In-Dash Navigation System	O	O	O	O

GENERAL EXTERIOR

- Standard on All Models:**
- Fiberglass Front & Rear Caps
 - Double Electric Step
 - Gravity Water Fill
 - Tinted One-piece Windshield
 - 1/4" Thick Single Pane Windows
 - Color Back-up Monitor
 - 8.0 kw Onan® Generator
 - Convenient Access Doors with Gas Shocks
 - 110 V Exterior Receptacle
 - Horizontal Mounted Wipers
 - Single Handle Lockable Storage Door Latches
 - Undercoating
 - Heated Power Mirrors
 - Heated Holding Tank Compartment
 - Roof Ladder
 - Exterior Patio Light
 - Four 6 V Auxiliary Batteries
 - External Tripod Satellite Hook-up
 - Power Patio Awning
 - Park Telephone Ready
 - Exterior Storage Compartment Lights
 - Automatic Entry Door Awning
 - Digital TV Antenna
 - Chrome Mirror Heads with Integrated Turn Signal Cameras
 - Awning(s) over Slide-outs
 - Cable TV Ready
 - Full-body Paint
 - Chrome Wheel Liners
 - 50 Amp Service
 - Hydraulic Automatic Leveling Jacks
 - Quiet AC Roof-ducted System
 - Black Holding Tank Flush System
 - Front Cap Protective Film
 - Two Low Profile Roof ACs (13,500 BTUs)
 - Exterior Rinse Hose/Shower

Available Options:

	33 AA	37 PA	38 QBA	38 QRA
In-Motion Satellite Dish	○	○	○	○
Air Horns	○	○	○	○
Two Low Profile Roof ACs with Heat Pumps (15,000 BTUs)	○	○	○	○
Exterior TV	○	○	○	○
Mud Flap with Diffuser	○	○	○	○
Exterior Slide-out Tray***	○	○	○	○

***Exterior Slide-out Tray & Central Vacuum Cleaner cannot be optioned together.

GENERAL INTERIOR

- Standard on All Models:**
- High Gloss Raised Panel Hardwood Cabinet Doors
 - Chainless Solar & Privacy Shades
 - Carbon Monoxide Detector
 - Solid Wood Cabinet Fascias
 - Power Roof Vents
 - LED Lighting
 - Soft Touch Vinyl Ceiling
 - Tank Level Monitor System
 - Extraordinaire™ AC System
 - TV in Entertainment Center
 - Smoke Detector
 - LPG Leak Detector
 - Ceramic Tile Flooring in Living Room & Bath Area
 - 10-gallon DSI Gas/Electric Water Heater
 - Home Theater Surround Sound System (Includes DVD Player)
 - Treated Carpet & Fabrics
 - Power Step Well Cover
 - Ball Bearing Drawer Slides
 - 2000 Watt Sine Wave Inverter

Available Options:

	33 AA	37 PA	38 QBA	38 QRA
Cordovan Solid Cabinet Doors & Drawer Fronts	○	○	○	○
English Chestnut Solid Cabinet Doors & Drawer Fronts	○	○	○	○
Mocha Solid Cabinet Doors & Drawer Fronts	○	○	○	○
Stacked Washer/Dryer	○	○	○	○
Central Vacuum Cleaner****	○	○	○	○

****Exterior Slide-out Tray & Central Vacuum Cleaner cannot be optioned together.

LIVING AREA/DINETTE

Available Options:

	33 AA	37 PA	38 QBA	38 QRA
Leatherette Booth Dinette on Passenger Side	S	S	NA	NA
Leatherette Booth Dinette on Driver Side	NA	NA	S	NA
Leatherette DE Sofa/Sleeper on Driver Side	NA	NA	S	NA
Leatherette Hide-A-Bed Sofa/Sleeper & One Recliner on Driver Side	S	S	○	NA
Leatherette L-Shaped Sofa and Recliner on Driver Side	○	○	NA	NA
Leatherette Hide-A-Bed Sofa/Sleeper on Passenger Side	NA	NA	NA	S
Leatherette U-Shaped Dinette on Driver Side	NA	NA	NA	S
Leatherette U-Shaped Dinette on Passenger Side	NA	○	NA	NA
Leatherette DE Sofa/Sleeper on Passenger Side	NA	NA	S	NA
Dinette with Computer Workstation	○	○	○	NA
Dinette with Computer Workstation & One Recliner	NA	NA	NA	○
Fireplace Below TV in Entertainment Center	○	○	NA	○

All options may not be available in every model. Because of progressive improvements, specifications, standard & optional equipment are subject to change without notice or obligation. For a complete & up-to-date list of available options & specifications, as well as information on Tiffin's full line of motorhomes, visit tiffinmotorhomes.com.

KITCHEN

- Standard on All Models:**
- Double Bowl Kitchen Sink with Single Lever Satin Nickel Faucet
 - Solid Surface Galley Countertop
 - Solid Surface Backsplashes
 - 3-burner Recessed Cooktop with Gas Oven
 - Solid Surface Cooktop Cover
 - Microwave with Exterior Venting
 - Large 2-door Refrigerator with Pantry

Available Options:	33 AA	37 PA	38 QBA	38 QRA
Convection Microwave	○	○	○	○
3-burner Cooktop with Convection Microwave	○	○	○	○
2-door Gas/Electric Refrigerator with Icemaker	○	NA	○	○
4-door Gas/Electric Refrigerator with Icemaker	○	NA	○	○
Solid Wood Refrigerator Panels (2-door Refrigerator)	○	NA	○	○
Residential Refrigerator	○	S	NA	○
Full Tile Backsplash	○	○	○	○

BEDROOM

- Standard on All Models:**
- Wardrobe with Automatic Light
 - Bed Comforter with Throw Pillows
 - TV
 - Carpeted Flooring
 - Inner Spring Queen Mattress (60" x 80")
 - Solar/Privacy Shades

Available Options:	33 AA	37 PA	38 QBA	38 QRA
King Bed Mattress (72" x 80")	○	○	NA	○
Bunk Beds (30" x 72") with Bunk Ladder/Convertible Wardrobe	NA	NA	S	NA
DVD Monitors in Bunk Beds	NA	NA	○	NA
Bedroom Ceiling Fan	○	○	○	○

BATH

- Standard on All Models:**
- Medicine Cabinet
 - Skylight in Shower with Sliding Cover
 - Molded Fiberglass One-piece Shower
 - Solid Surface Vanity Top
 - Roof Vent Fan

Available Options:	33 AA	37 PA	38 QBA	38 QRA
Tub (in Place of Shower)	NA	NA	○	○

WARRANTY

The Tiffin Five-Star Warranty. The best in the business, bar none.



At Tiffin Motorhomes, we build for quality first and foremost, limiting our production to just 12 coaches a day to ensure meticulous craftsmanship. It may not be the most business-savvy way to run a company but it is the best way. By investing the time and effort to do things right, we want you, as a Tiffin owner, to have the utmost confidence in your coach, as well as a peace of mind you won't find with other manufacturers. You see, not only do we stand proudly behind our product, we stand behind you as well.

★ **10**

YEAR CONSTRUCTION WARRANTY

The structural integrity of the welded frame of entire coach is warranted for 10 years.

★ **5**

YEAR DELAMINATION WARRANTY

We guarantee against all exterior fiberglass delamination or wall separation for 5 years.

★ **1**

YEAR COMPREHENSIVE WARRANTY

Your coach is warranted against defects in materials and workmanship for 12 months, or 12,000 miles of use.

★ **1**

YEAR COACH ROADSIDE SERVICES

Available through Coach-Net, the country's largest RV emergency road service, this program provides 24/7 access to responsive roadside and technical assistance.

★ **Ongoing Owner Support**

No other motorhome company can compare with Tiffin's exceptional customer service. Email us at service@tiffinmotorhomes.com or call: **256/356.8661**.