

DENALI



SETTING THE STANDARD IN AFFORDABLE LUXURY



DENALI

AFFORDABLE LUXURY



Whether you are a family exploring the Grand Canyon or a retired couple relaxing on the Gulf of Mexico's shores, the Denali provides unsurpassed comfort and residential amenities where other products fall short.

EXPANDED STORAGE

Now you can take it all with Denali's easy-to-load pass-through basement storage and under-bed storage. Plus, our kitchens provide plenty of cabinet, drawer and pantry space to hold all of your favorite snacks.





DENALI LITE 2901RLS | TIMBERLAND

COUNTERTOP

Denali's solid-surface, bevel-edge countertops add style to your kitchen, while standard sink covers create even more counterspace for all of your cooking needs.

REFRIGERATOR

Whip together a party-sized meal for the whole family thanks to Denali's 8 cu. ft. refrigerator with raised-panel hardwood front.



KITCHEN STORAGE GALORE



RESIDENTIAL UPGRADES

With a focus on luxury, style and craftsmanship, Denali delivers ...

- ◆ Raised-panel hardwood cabinet doors and drawers
- ◆ Full-height pantry with full-access cabinets and ball-bearing drawer guides
- ◆ Backsplash in kitchen with LED lighting
- ◆ Oven with a three-burner cooktop and piezo igniter
- ◆ Residential microwave with turntable
- ◆ Large pots and pans drawers in galley
- ◆ LED lighting
- ◆ Pleated night shades
- ◆ Premium flooring
- ◆ Residential carpet
- ◆ Tinted safety-glass windows
- ◆ Porcelain foot-flush toilet
- ◆ Undermount galley sink with cover



DENALI

WIDE-OPEN SPACES



DENALI 2901RLS BATHROOM



DENALI LITE 2611BH | TIMBERLAND



DENALI 335RLK | SIENNA RIDGE

UNWIND & RELAX

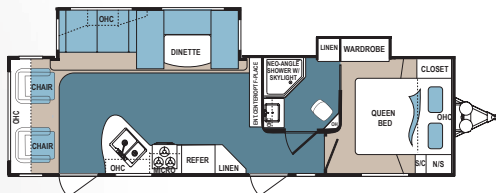
With a flush-floor master bedroom and an extra five inches of height, Denali adds more comfort to your fifth wheel space than ever before.



5" MORE

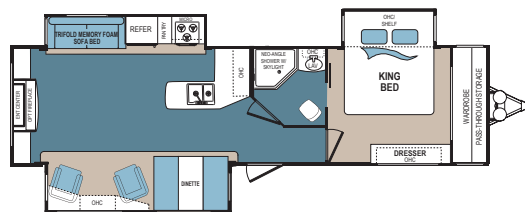


DENALI 350FK | SIENNA RIDGE



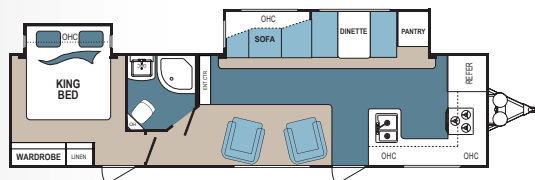
DENALI TRAVEL TRAILER | 266RL

Ext. Length: 34' 6" Ext. Height: 11' 1" Average Shipping Weight: 7,613 Sleeps: 3-4



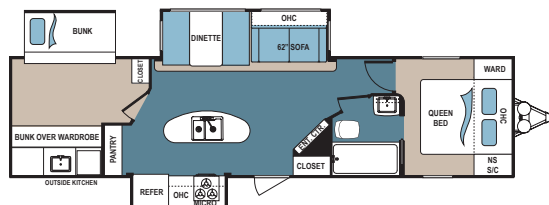
DENALI TRAVEL TRAILER | 287RE

Ext. Length: 36' 9" Ext. Height: 11' 4" Average Shipping Weight: 8,287 Sleeps: 3-4



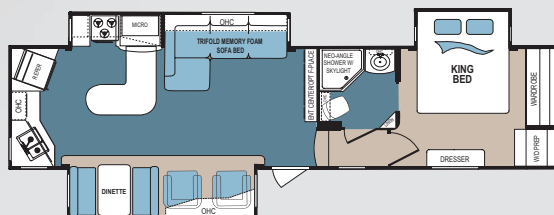
DENALI TRAVEL TRAILER | 350FK

Ext. Length: 38' 7" Ext. Height: 11' 6" Average Shipping Weight: 8,300 Sleeps: 6



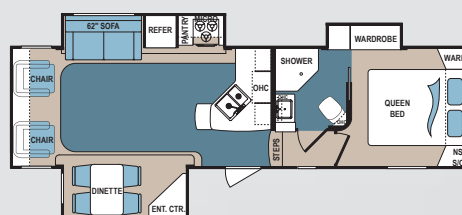
DENALI TRAVEL TRAILER | 371BH

Ext. Length: 38' Ext. Height: 11' 3" Average Shipping Weight: 8,540 Sleeps: 4-6



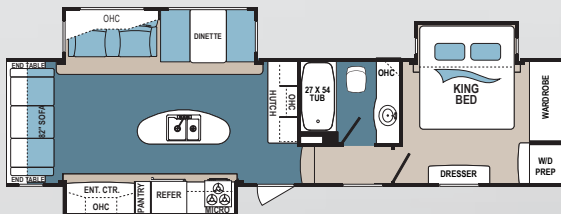
DENALI FIFTH WHEEL | 293RKS

Ext. Length: 37' 11" Ext. Height: 11' 11" Average Shipping Weight: 10,192 Sleeps: 2-4



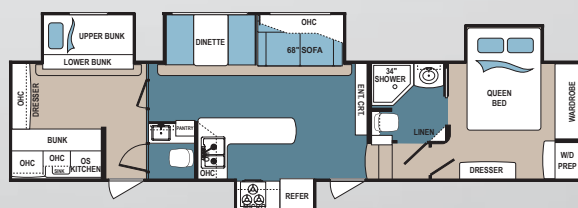
DENALI FIFTH WHEEL | 297RLX

Ext. Length: 32' 9" Ext. Height: 12' Average Shipping Weight: 8,780 Sleeps: 2-3



DENALI FIFTH WHEEL | 335RLK

Ext. Length: 37' 10" Ext. Height: 12' 2" Average Shipping Weight: 10,566 Sleeps: 8



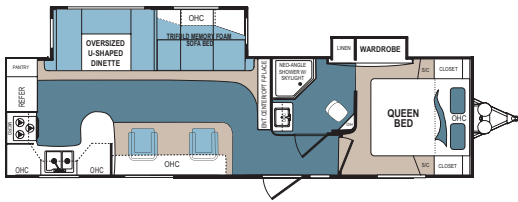
DENALI FIFTH WHEEL | 365BHS

Ext. Length: 41' Ext. Height: 12' 10" Average Shipping Weight: 11,682 Sleeps: 8

DENALI SPECIFICATIONS

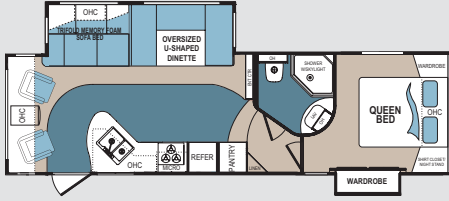
DIMENSIONS					WEIGHTS (LBS.)		TANKS (GALS.)			
MODEL	FLOORPLAN	*EXTERIOR TRAVEL LENGTH	EXTERIOR WIDTH	EXTERIOR HEIGHT (WITH A/C)	**AVERAGE SHIPPING WEIGHT	DRY HITCH WEIGHT	CARGO CARRYING CAPACITY	***FRESH WATER CAPACITY	GREY WATER CAPACITY	BLACK WATER CAPACITY
Travel Trailer	266RL	34' 6"	96"	11' 1"	7,613	938	2,067	56	84	42
	287RE	36' 9"	96"	11' 4"	8,287	925	2,889	56	48	48
	289RK	34' 8"	96"	11' 2"	7,696	966	1,984	56	84	42
	325RL	35' 11"	96"	11' 7"	8,600	980	2,576	56	76	48
	350FK	38' 7"	96"	11' 6"	8,300	1,084	2,876	57	48	48
	371BH	38'	96"	11' 3"	8,540	846	2,636	67	96	48
Fifth Wheel	262RLX	31' 5"	96"	12'	8,163	1,677	2,397	56	75	42
	280LBS	33' 10"	96"	12' 5"	8,815	1,744	1,745	56	90	48
	293RKS	37' 11"	96"	11' 11"	10,192	2,046	2,000	67	48	48
	297RLX	32' 9"	96"	12'	8,780	1,843	1,780	67	48	48
	307RLS	35' 4"	96"	12' 2"	9,547	2,013	2,645	56	96	48
	316RES	39' 3"	96"	12' 3"	10,408	2,082	1,784	67	96	48
	335RLK	37' 6"	96"	12' 2"	10,566	2,334	1,914	57	96	48
	365BHS	41'	96"	12' 10"	11,682	2,478	3,818	57	144	96

*Length is defined as the distance from the centerline of hitch pin/coupler to rear bumper of trailer. **Our weights represent how most units are built, inclusive of many commonly-ordered options. ***Fresh water capacity includes water heater capacity.



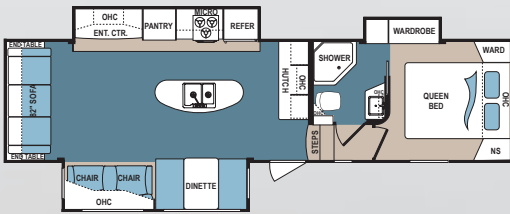
DENALI TRAVEL TRAILER | 289RK

Ext. Length: 34' 8" Ext. Height: 11' 2" Average Shipping Weight: 7,696 Sleeps: 3-4



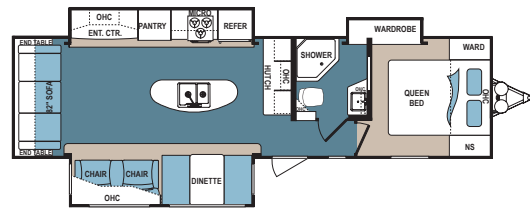
DENALI FIFTH WHEEL | 262RLX

Ext. Length: 31' 5" Ext. Height: 12' Average Shipping Weight: 8,163 Sleeps: 3-5



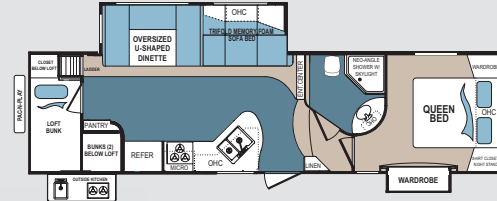
DENALI FIFTH WHEEL | 307RLS

Ext. Length: 35' 4" Ext. Height: 12' 2" Average Shipping Weight: 9,547 Sleeps: 2-4



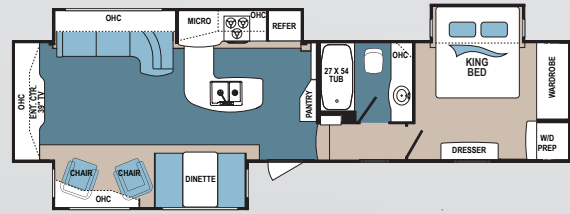
DENALI TRAVEL TRAILER | 325RL

Ext. Length: 35' 11" Ext. Height: 11' 7" Average Shipping Weight: 8,600 Sleeps: 3-4



DENALI FIFTH WHEEL | 280LBS

Ext. Length: 33' 10" Ext. Height: 12' 5" Average Shipping Weight: 8,815 Sleeps: 3-5



DENALI FIFTH WHEEL | 316RES

Ext. Length: 39' 3" Ext. Height: 12' 3" Average Shipping Weight: 10,408 Sleeps: 3-4

DENALI STANDARDS AND OPTIONS

DENALI SUMMIT PACKAGE

- 15' sprayer hose with quick connect
- 13,500-BTU ducted air conditioner
- 30,000- to 34,000-BTU forced air furnace
- Aluminum wheels
- Ball-bearing drawer guides throughout
- Barrel ceiling with walnut trim (TT only)
- Brushed nickel hardware and fixtures
- Command Center with all switches and monitors in one location
- Dinettes with pull-out drawers
- Expanded turning radius front cap
- Eye Sight Hitch Vision with LED lights in the front cap (fifth wheel models)
- E-Z Lube axles
- Four (4) interior speakers with zone switch
- Full-height pantry, full-access cabinets
- Hardwood slideout fascia with antique finish
- Heated and enclosed underbelly
- High-rise kitchen faucet with sprayer
- Large pots and pans drawers in galley
- LED lighting at cabinet base in kitchen
- LED TV in living area

- Propane quick connection
- Media Center: Bluetooth Stereo with USB and auxiliary
- Backsplash in kitchen with LED lighting
- Oven with 3-burner cooktop and piezo igniter
- Oyster fiberglass
- Pleated night shades
- Porcelain foot flush toilet
- Premium flooring
- Pushback-style recliners (select models)
- Quick-connect power cord
- Radial tires
- Raised-panel hardwood cabinet doors and drawers
- RCA cable from stereo to TV
- Residential carpet
- Residential microwave with turntable
- Roof ladder
- Satellite and cable prep
- Serving tray sink cover
- Skylight over tub and shower
- Solid-surface countertops
- Spare tire with carrier and cover

- Tinted safety-glass windows
- TV cable and electrical hookups under awning
- Under-mount galley sink with cover
- Utility management center (fifth wheels)
- TV antenna with booster

PREMIUM PACKAGE

- Power awning with LED lighting
- Raised-panel hardwood refrigerator front
- Slam-latch baggage doors
- Tinted safety-glass windows
- 8 cu. ft. refrigerator
- 10-gal. DSI water heater
- Barrel ceiling with Walnut Yacht trim (travel trailer only)
- Friction-hinge main entry
- Painted gel-coated front cap with LED lighting
- Stainless-steel appliances

MANDATORY OPTIONS

- 50-amp service with prep for 2nd A/C
- Black tank flush
- Denali Summit Package

- Destination tri-fold sofa in place of standard sofa
- EquaFlex upgraded suspension
- Luxury Package
- NitroFill (nitrogen-filled tires)
- Outside speakers
- Premium Package
- Thermal Package

OPTIONAL EQUIPMENT

- 13,500-BTU bedroom A/C
- 15,000-BTU living area A/C in place of 13,500-BTU
- Two residential recliners
- Bike rack with spare tire
- Central vacuum system
- CSA construction and seal
- Dual-pane windows (frameless)
- Electric four-point leveling system (FW only)
- Electric front and rear stabilizer jacks
- Fireplace
- Free-standing dinette table with four chairs
- Power tongue jack
- Upgraded mattress
- Wireless backup camera

DISCLAIMER: Product information is as accurate as possible as of brochure publication date. All features, floor plans and specifications in this brochure are subject to change without notice. Please consult Dutchmen's website at www.Dutchmen.com for current product information and specifications. Tow Vehicle Disclaimer. **CAUTION:** Owners of Dutchmen recreational vehicles are solely responsible for the selection and proper use of tow vehicles. All customers should consult with a motor vehicle manufacturer or their dealer concerning the purchase and use of suitable tow vehicles for Dutchmen products. Dutchmen disclaims any liability or damages suffered as a result of the selection, operation, use or misuse of a tow vehicle. DUTCHMEN'S LIMITED WARRANTY DOES NOT COVER DAMAGE TO THE RECREATIONAL VEHICLE OR THE TOW VEHICLE AS A RESULT OF THE SELECTION, OPERATION, USE OR MISUSE OF THE TOW VEHICLE. REFERENCE DUTCHMEN MANUFACTURING OWNERS MANUAL FOR LIMITED WARRANTY DETAILS.



DENALI LITE

WIDE-OPEN SPACES

Travel Trailer and Fifth Wheel Lite options available

BUNK BEDS IN DOWN POSITION



BUNK BEDS IN UP POSITION



INNOVATIVE SPACE

Our multi-purpose sleeping room has two retractable—height-adjustable bunks, a play space and extra storage.

DENALI LITE 2611BH & 3155BH

LUXURY IS IN THE DETAILS

Denali's 5-inch barrel ceiling and opposing slideouts offer sizable interior height and width. These wide open spaces will brighten your living space, increase your comfort and make you wish your trip never ended.



DENALI LITE 2901RLS | TIMBERLAND

BARREL CEILING

5"↑

OPPOSING
SLIDEOUTS

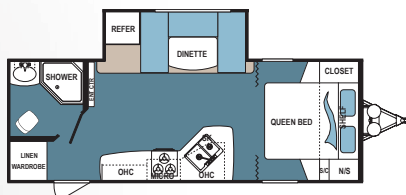
MORE STYLE & FEATURES

The Denali kitchen rivals any home kitchen! Create delicious meals in the oven or on the three-burner cooktop, prepare snacks in the full-sized microwave and enjoy easy clean-up with your mosaic tile backsplash, high-rise faucet, sprayer and galley sink.

HIGH-RISE KITCHEN FAUCET WITH SPRAYER

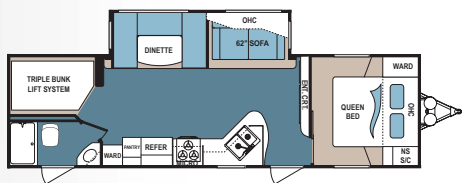


THREE-BURNER COOKTOP WITH PIEZO IGNITER



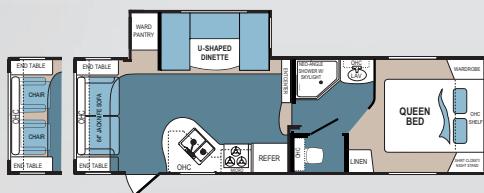
DENALI LITE | 2371RB

Ext. Length: 27' 6" Ext. Height: 11' Average Shipping Weight: 5,677 Sleeps: 2-3



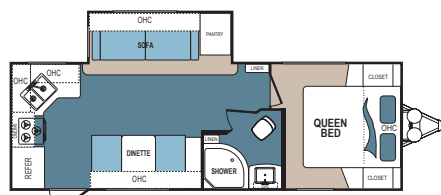
DENALI LITE | 2611BH

Ext. Length: 33' 10" Ext. Height: 10' 11" Average Shipping Weight: 7,078 Sleeps: 5-7



DENALI LITE FIFTH WHEEL | 2445RL

Ext. Length: 28' 6" Ext. Height: 11' 10" Average Shipping Weight: 6,921 Sleeps: 2-4



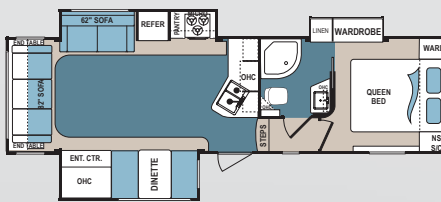
DENALI LITE | 2462RK

Ext. Length: 28' 11" Ext. Height: 11' 2" Average Shipping Weight: 6,225 Sleeps: 3-4



DENALI LITE | 3155BH

Ext. Length: 35' 8" Ext. Height: 11' 7" Average Shipping Weight: 7,640 Sleeps: 10



DENALI LITE FIFTH WHEEL | 2901RL

Ext. Length: 32' 9" Ext. Height: 12' 7" Average Shipping Weight: 8,340 Sleeps: 6

DENALI LITE STANDARDS AND OPTIONS

MANDATORY OPTIONS

15" aluminum wheels
15" spare tire with carrier
All-Weather Thermal Package
Black tank flush
Denali Lite Value Package
Nitrofill (nitrogen-filled tires)
Outside speakers
Painted gel-coat front cap with LED lighting
Rear roof ladder

OPTIONAL EQUIPMENT

50-amp service wire for 2nd A/C
13,500-BTU non-ducted bedroom A/C
15,000-BTU living area A/C in place of 13,500-BTU
Bike rack with spare tire
Electric front and rear stabilizer jacks
Frameless dual-pane windows

Free-standing dinette table with four chairs

Living room TV

Power tongue jack (travel trailers)

Residential push-back recliners (2445RL only)

State seal (where applicable)

Wireless backup camera

ALL WEATHER THERMAL PACKAGE

13,500-BTU ducted A/C
30,000-BTU forced air furnace
Enclosed underbelly with heated holding tanks

DENALI LITE VALUE PACKAGE

6 gal. gas/electric/DSI water heater with bypass
8 cu. ft. double-door refrigerator
15" pressure sprayer
Backsplash in kitchen with LED lighting
Ball-bearing drawer guides throughout

Barrel ceiling with walnut trim (TT)

Brushed nickel hardware and fixtures

Command center

Destination tri-fold sofa (n/a 2371 and 2445)

Expanded turning radius front cap (FW)

Eye Sight Hitch Vision with LED lights in the cap

E-Z Lube axles

Galley sink

Hardwood slideout fascia

Interior speakers (4) with zone switch

LED lighting at cabinet base in kitchen

Manual stabilizer jacks (front and rear in travel trailers) (rear in fifth wheels)

Media center with AM/FM/CD/DVD/MP3 and Bluetooth

Oven with 3-burner cooktop and piezo igniter

Pleated night shades

Porcelain foot-flush toilet

Power awning with LED lighting

Power front landing gear (FW only)

Premium flooring

Radial tires

RCA cable from stereo to TV location

Residential carpet

Residential high-rise kitchen faucet

Residential microwave with turntable

Satellite and cable prep

Serving tray sink cover

Skylight over tub/shower

Slam-latch compartment doors

Tinted safety-glass windows

TV cable and electrical hookups under awning

U-dinettes with pull-out drawers

Wineguard TV antenna with booster

DENALI LITE SPECIFICATIONS

DIMENSIONS					WEIGHTS (LBS.)			TANKS (GALS.)		
MODEL	FLOORPLAN	*EXTERIOR TRAVEL LENGTH	EXTERIOR WIDTH	EXTERIOR HEIGHT (WITH A/C)	**AVERAGE SHIPPING WEIGHT	DRY HITCH WEIGHT	CARGO CARRYING CAPACITY	***FRESH WATER CAPACITY	GREY WATER CAPACITY	BLACK WATER CAPACITY
Travel Trailers	2371RB	27' 6"	96"	11'	5,677	662	3,163	52	42	42
	2462RK	28' 11"	96"	11' 2"	6,225	808	3,455	52	84	42
	2611BH	33' 10"	96"	10' 11"	7,078	916	2,602	63	42	42
	3155BH	35' 8"	96"	11' 7"	7,640	1,106	2,040	57	33	42
Fifth Wheels	2445RL	28' 6"	96"	11' 10"	6,921	1,339	3,639	52	84	42
	2901RL	32' 9"	96"	12' 7"	8,340	1,773	1,920	57	48	48

*Length is defined as the distance from the centerline of hitch pin/coupler to rear bumper of trailer. **Our weights represent how most units are built, inclusive of many commonly-ordered options. ***Fresh water capacity includes water heater capacity.

PREMIUM FEATURES THAT WORK FOR YOU!

MAX THERMAL INSULATION

Four types of insulation

Live comfortably in practically any weather. Your Denali's Thermal Insulation Package is stocked with four types of insulation — fiberglass batten, block foam, expandable foam and FlexFoil blanket insulation — all of which make heating and cooling a breeze.

AERODYNAMIC FRONT CAPS

Featuring LED lighting

Our painted fiberglass and clear-coat front caps, are less likely to fade or oxidize over time compared to our competitors, giving your Denali a high-end look for years to come.

ELECTRIC AWNING

Boasting LED light strip

Denali always gives you more. Unlike other manufacturers, our easy-to-use electric awning with LED light strip comes standard in all Denali units. It provides a cool and comfortable shade, doubles as a windbreaker and adds more light to evenings spent outside your RV.

DISCLAIMER: Product information is as accurate as possible as of the brochure publication date. All features, floor plans and specifications in this brochure are subject to change without notice. Please consult Dutchmen's website at www.Dutchmen.com for current product information and specifications. Tow Vehicle Disclaimer. **CAUTION:** Owners of Dutchmen recreational vehicles are solely responsible for the selection and proper use of tow vehicles. All customers should consult with a motor vehicle manufacturer or their dealer concerning the purchase and use of suitable tow vehicles for Dutchmen products. Dutchmen disclaims any liability or damages suffered as a result of the selection, operation, use or misuse of a tow vehicle. DUTCHMEN'S LIMITED WARRANTY DOES NOT COVER DAMAGE TO THE RECREATIONAL VEHICLE OR THE TOW VEHICLE AS A RESULT OF THE SELECTION, OPERATION, USE OR MISUSE OF THE TOW VEHICLE. REFERENCE DUTCHMEN MANUFACTURING OWNERS MANUAL FOR LIMITED WARRANTY DETAILS.

DENALI DÉCOR

TIMBERLAND



Main Fabric

Accent

Wood

SIENNA RIDGE



Main Fabric

Accent

Wood

GREYSTONE



Main Fabric

Accent

Wood

AFFORDABLE LUXURY



Dutchmen—A North American Campground Classic

Few manufacturers have built RVs for 25+ years, and only one has set the standard for innovation AND value. Dutchmen **IS** "A North American Campground Classic."



Dutchmen[®]

Legendary Innovation. Trailblazing Value.

MORE STANDARD FEATURES MORE VALUE

Dutchmen RVs turn more heads on the lot and in the campground than any other. Why? While other manufacturers offer features as options, Dutchmen tends to make those same features standard. Call it "bang for the buck," "more for your money," or simply "more value." **We've built a reputation for bringing RV owners more standard features for less money** for more than 25 years... and it's a reputation we plan to keep.

300

STRONG

NATION WIDE DEALER NETWORK

More than 300 Dutchmen dealers across North America and our industry-leading service center in Goshen, Indiana, combine for your peace of mind before, during and after the sale. Rest assured no matter where your travels take you, **the best-resourced RV manufacturing company in the world is behind you all the way.**

PO BOX 2000 • 2164 Caragana Court
Goshen, Indiana 46527 Sales: 574.537.0600
www.dutchmen.com

At Dutchmen, quality is our standard. **Every single Dutchmen RV that comes off the line receives its own pre-delivery inspection.**

Typically, a competitor performs random inspections, meaning you won't find this commitment to quality anywhere else.



Scan this QR Code for a
360° view
of the Denali interior.



www.dutchmen.com

Visit us online to see all of the Dutchmen brands, innovative models and spacious floor plans.

Your local dealer

From giving advice to servicing products, we consider our loyal dealers the best resource for learning about Dutchmen products.

DEN-HM0216-36k