



# Highland

RIDGE RV

*Own the Outdoors*



# Roamer

# ROAMER FIFTH WHEELS



RF316RLS



RF337RLS



RF346FLR



RF347RES



RF348RLS



RF367BHS



RF376FBH



RF384BHS



RF430RLS

	RF316RLS	RF337RLS	RF346FLR	RF347RES	RF348RLS	RF367BHS	RF376FBH	RF384BHS	RF430RLS
<b>UVW</b>	9285	9657	10245	10605	10485	11305	12015	12135	11800
<b>Hitch Wt.</b>	2205	2320	2312	2130	2440	2360	2665	2295	2370
<b>Length</b>	31'5"	34'	38'1"	36'4"	36'10"	36'10"	41'11"	41'2"	42'7"
<b>Cargo (Gross)</b>	3200	3063	4067	3605	3510	3295	4445	3365	4290

# ROAMER TRAVEL TRAILERS



RT288FLR



RT291RLS



RT292RLS



RT310BHS



RT316RLS



RT320RES



RT323RLS



RT337RLS



RT340FLR

	RT288FLR	RT291RLS	RT292RLS	RT310BHS	RT316RLS	RT320RES	RT323RLS	RT337RLS	RT340FLR
<b>UVW</b>	7815	7865	8370	9265	8007	8070	8815	8755	8885
<b>Hitch Wt.</b>	1000	1040	960	1210	1200	810	1035	850	1350
<b>Length</b>	33'6"	33'6"	35'	37'3"	33'8"	34'6"	37'8"	36'4"	36'
<b>Cargo (Gross)</b>	1963	1930	2030	2235	1983	1920	2620	4095	4465



RF367BHS



RF367BHS (Party Room Package)



RT323RLS



RT323RLS

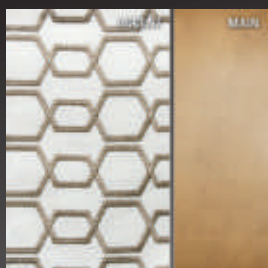


RF347RES

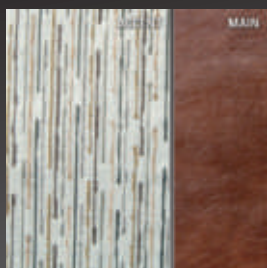
## DECOR OPTIONS



GRAPHITE



MARBLE



SADDLE BROWN

# THE HIGHLAND ASSURANCE

The Highland Assurance is our promise to quality and innovation. It's building RVs that are rooted in the needs and suggestions of our customers. Most importantly, it's about giving you the assurance of an enjoyable trouble-free RV experience. But even if there is trouble, we've got your back.



We stand behind our product, one owner to the next. At Highland Ridge RV, we are one of the few manufacturers that have a 2-Year Limited Transferable Warranty.

## MORE ROOM LESS WEIGHT

This is our mission at Highland Ridge RV. It drives us to innovate and revolutionize the RV industry and it's why our products are 10 - 15% lighter than the competition.



We are pursuing perfection through innovation and quality. Our process starts with you! Your RV experiences drive the evolution of our products in a constant state of improvement.



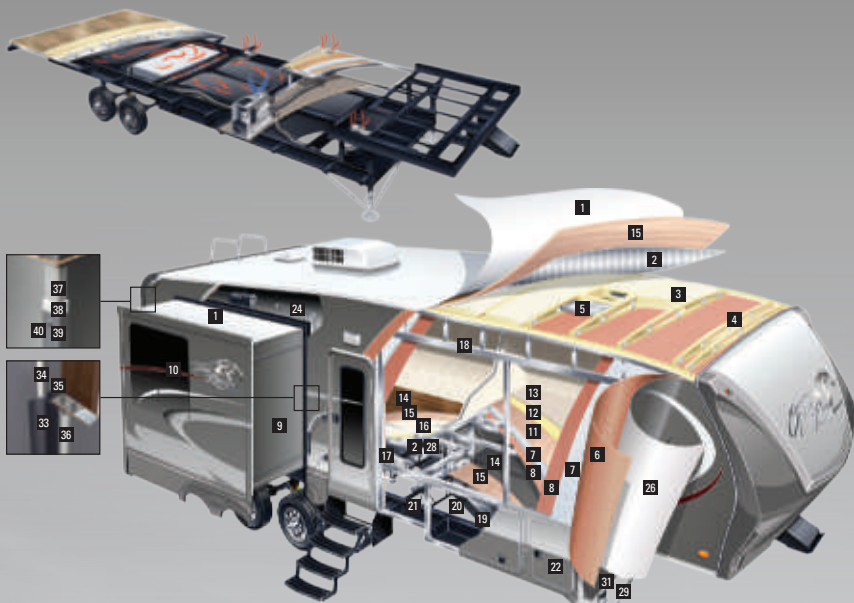
Every new Highland Ridge RV design must undergo a grueling 500 mile durability test. A battery of figure eights, inverted chatters, undulations, and staggered bumps will test and prove our workmanship.

Highland Ridge RVs are built to withstand the harshest of environments. We put our products into a zero degree chamber for five hours. The results speak for themselves.

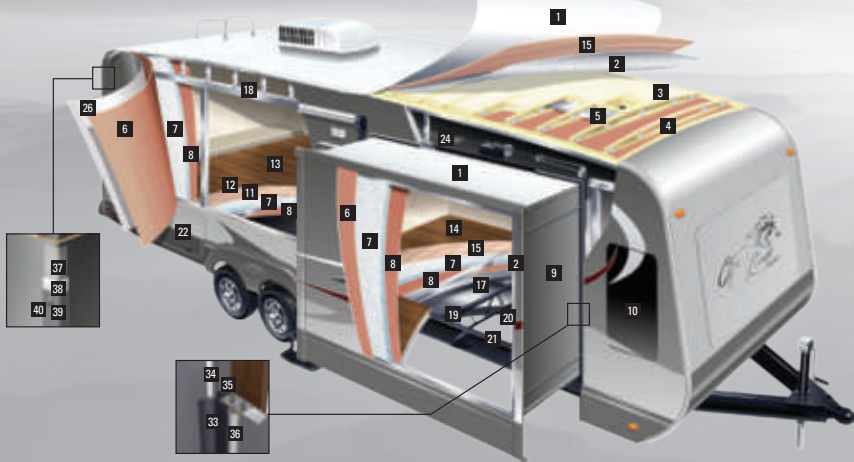


**THE RESULTS**

BEDROOM	72°F
KITCHEN	70°F
SLIDE-OUT	66°F
BATHROOM	72°F
LIVING ROOM	70°F
WASTE WATER TANK	62°F
STORAGE UNDER RV	58°F



- |  |  |   |                           |
|--|--|---|---------------------------|
| 1. PVC Roof Material                                     | 11. Double Layer Luan  | 20. Polypropylene Underbelly                    | 29. JT Strong Arms        |
| 2. R-38 Radiant Technology Insulation                    | 12. Residential Rebound Carpet Pad                                       | 21. Steel I-Beam Frame                          | 31. TPO Under Hitch Area  |
| 3. R-14 Batten Insulation                                | 13. Carpet   | 22. 1" Thick Double Insulated Baggage Doors     | 33. Rubber Seal (Outside) |
| 4. 5" Roof Truss   | 14. BeauFlor® Vinyl Flooring   | 23. 9" Elephant Pad                             | 34. Water Dam             |
| 5. Foam A/C Ducting                                      | 15. Plywood Decking  | 24. Accu-Slide Slide-Out System                 | 35. Rubber Seal (Inside)  |
| 6. Exterior Wall Substrate                               | 16. R-7 Batten Insulation  | 25. Lamulux 1000 Gel Coated Fiberglass          | 36. Bulb Seal             |
| 7. R-9 Block Foam Insulation                             | 17. "Darco" Anti-Puncture Material                                       | 26. 3/4" Vapor Barrier (R-5)                    | 37. 3M Flashing Tape      |
| 8. Luan  | 18. 2" x 3" Aluminum Header  | 27. 12" On Center 2" x 2" Aluminum Floor Joists | 38. Butyl Tape            |
| 9. Laminated Slide-Out End Walls (R-9) Frameless Windows | 19. R-38 Radiant Technology Insulation (Extreme Arctic Package)*Optional |   | 39. L-Molding             |
|  |  |   | 40. Geo-Cell Caulk        |



- |                                       |  |   |                    |
|---------------------------------------|--|---|--------------------|
| 1. PVC Roof Material                  | 11. Double Layer Luan                  | 21. Steel I-Beam Frame                          | 38. Butyl Tape     |
| 2. R-38 Radiant Technology Insulation | 12. Residential Rebound Carpet Pad     | 22. 1" Thick Double Insulated Baggage Doors     | 39. L-Molding      |
| 3. R-14 Batten Insulation             | 13. Carpet                             | 23. 9" Elephant Pad                             | 40. Geo-Cell Caulk |
| 4. 5" Roof Truss                      | 14. BeauFlor® Vinyl Flooring           | 24. Accu-Slide Slide-Out System                 |                    |
| 5. Foam A/C Ducting                   | 15. Plywood Decking                    | 25. Lamulux 1000 Gel Coated Fiberglass          |                    |
| 6. Exterior Wall Substrate            | 16. R-7 Batten Insulation              | 26. 3/4" Vapor Barrier (R-5)                    |                    |
| 7. R-9 Block Foam Insulation          | 17. "Darco" Anti-Puncture Material     | 27. 12" On Center 2" x 2" Aluminum Floor Joists |                    |
| 8. Luan                               | 18. 2" x 3" Aluminum Header            |   |                    |
|                                       | 19. R-38 Radiant Technology Insulation |   |                    |
|                                       |  |   |                    |

## STANDARD FEATURES:

- "Maxx Air" Vent Cover
- 100" Wide Body Frame
- 50 Amp Service
- 60 Lbs of LP Capacity
- Ext. Utility Center w/ Black Tank Flush
- Fireplace (Most Models)
- Heavy Duty Full Extension Drawer Guides
- Large Lavatory Sink
- Lippert Equa-Flex Suspension
- Lippert Wide-Stance Axles
- LP Quick Connect
- Nitrogen Filled Radial Tires
- Porcelain Toilet w/ Foot Pedal Flush
- Prepped for Observation Camera
- PVC Roof Material
- 16" Aluminum Tires & Wheels (FW)
- Ladder (FW)
- 15" Aluminum Wheels & Tires (TT) (16" 337&340)
- Front & Rear Stab Jacks (TT)
- Power Tongue Jack (TT)

## EXECUTIVE PACKAGE: (MANDATORY)

- 12V CD/DVD Player w/ Bluetooth®
- Bedroom Speakers
- Corian® Countertops
- Crown Molding
- Digital TV Antenna w/Booster
- Flat Screen TV in Living Area
- Frameless Windows
- Full View Vented Entrance Door
- Large 8 Cu. Ft. Refrigerator
- LED Lighting in Ceiling
- Longitude Power Awning w/ LED Awning Light & Flex Guard
- Multi-Port Satellite Hook-Up
- Soundbar in Living Area
- USB/12V Charging Port
- Western Aspen Cabinet Doors
- Wired and Framed for 2nd A/C
- 15k BTU A/C w/"Quick Cool" Feature (FW)
- 20 GPH Quick Recovery Gas/Electric Water Heater (FW)
- 30" OTR Microwave (FW)
- Fantastic Fan in Kitchen (FW)
- One-Touch Automatic Leveling System (FW)
- 18 GPH Quick Recovery Gas/Electric Water Heater (TT)

## FOUR SEASONS PACKAGE: (MANDATORY)

- Atwood® High Performance Furnace
- Digital Thermostat
- Double Insulated Baggage Doors
- Heated & Enclosed Dump Valves
- Heated and Enclosed Underbelly
- Insulated Slide Floors
- R-38 Insulation in Roof & Floor
- R-9 Insulation in Sidewall
- Heated Storage Area (FW)

## OPTIONAL FEATURES:

- 2 Bar Stools
- 24" Bedroom TV
- 2nd A/C (13.5k BTU Ducted)
- Appliance Package (323,346,347,367,376,384,430)
- BBQ Grill
- Coffee Table Ottoman w/ Storage
- Corian® Island on Castors (337,340,337,430)
- Dual Pane Windows
- Dyson Vacuum Cleaner
- Extreme Arctic Package
- Fantastic Fan(s)
- French Door(s)
- King Bed IPO Queen Bed (323,430) (Std. 347,348)
- Observation Camera
- One-Piece Neo-Round Shower (337,340,316,346)
- Party Room Package (310,367)
- Rear Storage Tray
- Slide-Out Awning Covers
- Wall-Mount Fireplace (288,291,310,367,384)
- 12 Cu. Ft. Refrigerator (FW)
- 39" Outside TV (346) (FW)
- 3rd A/C (13.5k BTU Ducted) (FW)
- Ceiling Fan (FW & 340)
- Fantastic Fan in HALF Bathroom (384) (FW)
- LP Generator Prep (FW)
- 15k BTU Main A/C (TT)
- Corian® Sink Covers (TT)
- Ladder (TT)
- Lock Arm Stabilizers (TT)
- One-Piece Fiberglass Front Cap (N/A 340) (TT)
- Power Front & Rear Stab Jacks (TT)

*\*\*Please contact your local dealer to ensure availability of standards and options on a specific floorplan.*



**Highland**  
RIDGE RV

Own the Outdoors

START YOUR ADVENTURE AT: [WWW.HIGHLANDRIDGERV.COM](http://WWW.HIGHLANDRIDGERV.COM)

Due to continual research and advances, manufacturer reserves the right to change specifications, design, price, and equipment without notice, and assumes no responsibility for any error in the literature. Some items shown are not included as standard or optional equipment.

Your Open Range Roamer Dealer:

©2015 Highland Ridge RV, Shipshewana, Indiana. Published Date: 12/9/2015

