

DYNAMAX 

A DIVISION OF FOREST RIVER

WE'RE PERFORMANCE DRIVEN



DYNAQUEST XL



The Pioneer of Luxury Class C Motorhomes

Dynamax has been redefining the Class C for over 17 years.

A Higher Standard

Unlike flat-front, bus-style motorhomes, a Class C utilizes an automotive cab chassis for better airflow, fuel economy and handling.



The Dynaquest XL features all of the upscale appointments you've come to expect in a luxury Class A, but on a familiar, easy-to-drive chassis.

Armless, Roof Integrated Awning

Side Hinged Baggage Doors

Dual-Cockpit Entry Allows for Easy Entry and Exit

Chrome Air Horns

Aerodynamic Front Fiberglass Cap

Engine Access Just Under the Hood for Easy Maintenance and Serviceability

Automotive, crash tested chassis offers up to 5' of crush zone protection for added safety.

Front-Mounted Radiator for Maximum Cooling Efficiency

 DynaQuest XL

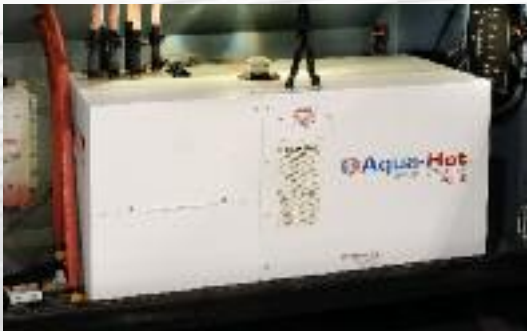
Details

Make the Difference

At Dynamax, each detail is carefully handcrafted to exceed your expectations. Premium carpet, Ultra Leather Furniture, polished tile flooring, solid wood cabinets, and residential quartz countertops are what you would find in a custom-built home. Name-brand electronics and appliances further enhance your travel experience to provide you with a true home away from home.



Multi-Plex wiring has been incorporated in the automotive industry for many years. This advanced wiring system requires fewer relays, connections, and wires, which reduces potential failure points. Color-coding and a programmable touch screen also makes it easier to troubleshoot if a problem occurs.



Designed and created by an RV enthusiast, our **Aqua-Hot hydronic heating system** provides quiet, evenly-distributed heat and unlimited hot water without the dryness created by a traditional LP furnace. It also offers utility bay heat, zoned heating, and dual power sources.





Solid Hard Wood Crafted to Perfection

Here's where old world craftsmanship meets cutting-edge technology. Dynamax builds with solid cherry hardwoods to produce the same exceptional cabinet construction found in your home.



Mortise and tenon construction



Pocket screws for structural integrity



Hand rubbed finishes optimize grain definition



Clear-coated solid hardwood doors provide additional protection and luster



Dividing walls and cabinets are reinforced for added strength



Inviting Living Spaces

When you leave the comforts of home, the last thing you need is restless sleep. That's why we include a residential memory foam mattress with iCool® technology in every unit we build. Neutral, designer bedding is included to compliment your preferred color palette as you add those personal touches.

The dual vanity in the 37RB means no more fighting for counterspace or mirror time. Ample storage and a dedicated linen closet is perfect for any length of stay. In addition, the standard MaxxAir fan with built-in rain cover ensures adequate ventilation rain or shine.



Everyday Luxury and Comfort

Solid hardwoods are a hallmark of Dynamax interior styling. Rich tones surround you throughout the coach. Generous sleeping quarters styled with fabulous fabric textures and patterns create visual interest. Our design team is renown for exacting attention to detail, as well as their clever use of storage space.



What's a home away from home without ample closet space? Wardrobe space abounds with his and her (or all her's) cedar-lined closets and a multitude of drawers. An optional washer/dryer sits behind louvered doors with additional hanging space on the 37RB.



 DynaQuest XL

Legendary Paint From Start to Finish

Each and every motorhome undergoes the same painstaking process that has made our paint renowned in the industry.

- Remove most trim (instead of masking)
- Sand every inch to be painted
- Prime and seal
- Apply base paint (1-6 colors)
- Air brush drop shadows
- Apply multiple coats of clear
- Bake on the finish
- Cut and buff (the key to turning an average paint job into a show-stopping work of art)
- Apply 3M Diamond Shield® to protect key areas.

Swirls give you vertigo? By doing our paint in-house we're able to accommodate solid color paint requests. This paint is applied with the same detail that we use on our own local artist designed themes.



A digitally-plotted spray mask is carefully applied.

DynaQuest XL
100th Anniversary Indianapolis 500,
Special Edition shown with
matching stacker trailer.



Dynamax has three on-site 25' x 60' paint booths. This means we have maximum control of quality. By painting parts and slide-outs before they are installed, we eliminate overspray on slide seals and interior components.



Freightliner Service Network

If there is ever an issue with the chassis portion of your motorhome, Freightliner's industry-leading support network begins with over 400 Freightliner dealer locations across North America. Plus, Freightliner ServicePoint Facilities integrated with Travel Centers of America and Petro Shipping centers offer certified repair and warranty work across the country.



A Powerhouse of Engineering

Engine: Cummins®

- ISL 8.9L Diesel
- 450 Horsepower @ 2100 RPM
- 1250 lb.-ft of Torque @ 1400 RPM
- 100 Gallon Diesel Fuel Tank
- 6 Gallon Diesel Exhaust Fluid Tank
- Bragging Rights (varies by driver)

Transmission: Allison®

- Calibrated to a vehicles particular operating requirements
- Smooth full power automotive shifts for fast acceleration and plenty of torque to handle steep grades with ease
- Match shift characteristics to the driver conditions with the simple push of a button
- Electronic controls precisely blend the transmission, retarder and service brakes for peak efficiency.

Construction Features



Deutsch heavy-duty, water-tight, bulk connectors with two 3,000 watt power inverters shown.



20,000 lb. Standard Hitch



Radiused, laminated one-piece fiberglass roof is standard on all models.



Hydraulic push-button self leveling system and rear air ride suspension



DynaQuest XL Standard Features & Options

XL Chassis

- Freightliner M2 112 Chassis; Cummins® 8.9L 450hp/1,250 lb.-ft. of Torque
- Allison 3200 TRV Six-Speed Automatic Transmission with Push-Button Electronic Shift Control (Dash-mounted)
- GVWR: 33,000 lbs.
- GCWR: 54,000 lbs.
- Trailer Hitch (20,000 Tow lbs./2,000 Tongue lbs.) with 7-way Flat Pin Tow Connection)
- Fuel Capacity: 100 Gallons (Twin 50-Gallon Aluminum Fuel Tanks)
- 6-Gallon Diesel Exhaust Fluid Tank
- Equiflo™ Inboard Fuel System
- Fuel Filter/Water Separator with Primer Pump
- Engine After-Treatment Device, Automatic Over-the-Road Regeneration and Dash-Mounted Regeneration Switch
- Dual-Stage C-Brake by Jacobs with LOW/OFF/HIGH Braking Dash Switch
- Air Brakes with 4-Wheel ABS
- Differential Lock
- Airliner 21,000-lb. Rear Suspension
- Dual Chassis Batteries: Alliance Model 1131, Group 31, 12V Maintenance Free Batteries
- 275-Amp Alternator
- 1,300 Square-Inch Aluminum Radiator
- 1,000W/115V Block Heater
- Cummins® 18.7 CFM Air Compressor
- Quick Disconnect Fitting with Tire Inflation Kit
- 12,000-lb. Front Axle
- 23,000-lb. Quiet Ride Rear Axle
- Powder and Liquid Coated Steel Frame Chassis
- Full Coverage Heavy Duty Undercoating
- 4.56 Rear Axle Ratio
- Front and Rear Tires: Michelin XZE2 275/80R22.5 (14 Ply radials)
- Front and Rear Wheels: Alcoa 22.5 x 8.25 Polished Aluminum Wheels (*Note: Only Outside Rims are Polished)

- Aluminum Cab
- Chrome Grille and Air Intake Grille
- Front Fiberglass Bumper Cover
- Daytime Running Lights
- Chrome Heated and Remote Mirrors
- Tinted Door Glass and Operating Wing Windows
- Polished Stainless Steel Cab Risers
- Chassis Battery Shut Off Switch in Cab
- One Valve Parking Brake System with Warning Indicator
- Option: Brake Controller
- Momentary Battery Booster Switch for Connecting Chassis and House Batteries
- Driver and Passenger Air Ride Seats with Swivel Pedestals and Ultra Leather Upholstery
- Radio - 7" Touch Screen and Premium Sound System with AM/FM/CD/DVD/Bluetooth including:
 - Sirius/XM Satellite Radio Ready (Requires Activation and Subscription)
 - GPS Navigation
 - Color Monitor for Side and Rear Cameras
 - USB and Auxiliary Inputs
- CB Radio with Left Hand Mirror Mounted Antenna
- Tilt and Telescoping Steering Column
- 18" Leather-Wrapped Steering Wheel
- Woodgrain Driver Instrument Panels
- Marker Lights with Separate Interrupter Switch
- Low Air Pressure Light and Buzzer
- Digital Flush Mount Alarm Clock in Dash
- 12V Accessory Ports
- Electronic Cruise Control
- Power Remote/Heated Mirrors
- Power Locks
- Power Windows - Driver and Passenger
- Three-Point Seat Belts - Driver and Passenger
- Electronically-Controlled Dash Air Conditioning
- Dual Reading Lights
- Two (2) Cup Holders in Dash

XL Construction

- 2" Laminated Constructed Sidewalls
- Gel-Coat Fiberglass Walls
- 2-1/4" Thick Laminated Aluminum Floor
- Crowned Fiberglass Roof
- Front Aerodynamic Fiberglass Cap and Front Transition Panels
- Molded Fiberglass Rear Cap
- R-8 Insulated Sidewalls; R-11 Insulated Roof; R-12 Insulated Floor
- Four-Point Fully Automatic Hydraulic Leveling Jacks
- Dual-Pane, Dark-Tinted Frameless Windows
- Rotational-Molded, Easy-Clean Storage Compartments
- Electric Slide System

XL Exterior

- Custom Full Body Paint with Diamond Shield
- Roof-Mounted, Integrated Armless Patio Awning with LED Lighting
- LED Patio Light and Driver-Side Security Light
- Aluminum-Wrapped Slide Out Toppers
- Keyless Pad at Entry Door
- Black-Trimmed Entry Door with Screen and Deadbolt Lock; Tinted, Frameless Window with Shade
- Lighted Acrylic Entry Grab Handle
- Exterior Power Entry Step
- Exterior Wall-Mounted Entertainment Center with 32" LED TV, AM/FM/CD/DVD Radio with Two (2) Speakers
- Aluminum Side-Hinge Locking Exterior Storage Doors with Chrome Handles
- Front and Rear LED Clearance and Marker Lighting
- Chrome Roof Mounted Air Horns
- Rear Dynamax Mud Guard

XL Interior

- Ultra Leather Furniture
- Ultra Leather Dream Dinette
- Option: Free Standing Dinette with Buffet, Table and Two (2) Chairs ILO Dream Dinette

- Front Overhead Entertainment System
- Polished Ceramic Tile Flooring
- Deluxe Carpet Pad (Slide Room)
- Deluxe Padded Ceiling
- LED Flush-Mount Ceiling Lighting
- Coordinating Fabric Window Treatments and Lambrequins with Hardwood Trim and Crown
- MCD Manual Day/Night Roller Shades
- Quartz Countertops
- Hardwood Cherry Cabinets
- Option: Rich Caramel Hardwood Cabinets with Hardwood Raised Panel Doors
- Hardwood Raised Panel Passage Doors
- Hidden Hinge Cabinet Door Hardware
- Full Extension Soft-closing Drawer Guides
- Lighted Entry Step with Solid Surface Surround
- Front Privacy Shade
- 50" LED Smart TV and Fireplace (37BH)
- 40" LED Smart TV (N/A 37BH)
- Blu-Ray® Home Theater System (Living area)
- Option: Dual Reclining Theater Seats in Place of Sofa (37BH)

XL Kitchen

- Residential Refrigerator: Stainless Steel 22.0 cu. ft. Double Door with Ice Maker
- Flush-Mount, Glass Electric Cooktop
- Convection Microwave Oven
- Residential Quartz Galley Countertops
- Tile Backsplash
- Pantry
- Deep, Double-Bowl Stainless Steel Sink
- Upgraded Single-Handle Faucet with Pullout Sprayer
- MaxxAir® Power Vent with Rain Cover
- Under-Cabinet Lighting

XL Bedroom

- King Mattress (66.5" x 75") with iCool® Sleep System (Gel-Infused Memory Foam)



DQ 37 BH



DQ 37 RB

- Lift-up Bed with Under-Bed Storage
- Designer Bedspread, Pillow Shams, and Pillows
- 28" x 76" Bunk Bed Mattress with Bedspreads and Privacy Partition (37BH Only)
- Hardwood Cabinet Wardrobe Doors with Mirrors
- Cedar-Lined Wardrobe
- Hardwood Nightstands
- LED Reading Lights
- Deluxe Carpet with Pad
- 32" LED TV
- DVD Player with Sound Bar Home Theater and Remote
- (2) Bunk 12V DVD Players (37BH Only)

XL Bathroom

- Corian® Shower
- Shower Skylight
- Glass Shower Door
- Metal Shower Head with On/Off and Matching Faucet
- Porcelain Macerator Electronic-flush Toilet (37RB)
- Porcelain Foot-flush Toilet (Floorplan specific)
- Quartz Lavatory Countertop and Backsplash
- Residential Brushed Nickel Faucet
- Deluxe Hardwood Medicine Cabinet
- MaxxAir® Power Vent with Rain Cover

Utilities

- Three (3) 12V 4D AGM Auxiliary Batteries (198 A.H. Each)
- Battery Disconnect
- 50-Amp Service with Power Cord Reel
- 3,000W Inverter/Charger
- Onan® 8kW Diesel Generator with Auto Transfer Switch
- Automatic Generator Start
- Dual Air Conditioners: Roof-Mount and Ducted 15,000 BTU with Heat Pump
- Aqua-Hot® 450 Diesel System with Engine Pre-Heat
- Dual-Zone Remote Thermostatically Controlled Heating
- Interior Monitor Panel with LPG/Tank/Battery Readout

- Exterior Service Station- Monitor Panel, Drain Valves, and Exterior Shower
- Exterior GFCI Receptacle
- Multiplex Wiring
- Thetford® Macerator System
- Dyson® Rechargeable Vacuum with Attachments
- Power Water Hose Reel
- Water Purification System (Whole coach)
- Exterior Park Cable Hookup
- Black Tank Flush
- 12V Tank Heaters on Holding Tanks
- 12V 4GPM High-Capacity Water Pump
- Carbon Monoxide, LP Gas, and Smoke Detectors
- Fire Extinguisher
- Winegard® In-Motion Satellite Dome
- Option: Canadian Shaw® Traveler Satellite Dish
- Option: DirecTV Triple LNB
- Option: Stackable Washer/Dryer (Floor plan specific)
- Option: Side-by-Side Washer/Dryer (Floor plan specific)
- Option: Dual 100W Roof Mount Solar Panels with 30-Amp Controller

Key Dimensions:	37 BH	37 RB	38 TS
GVWR	33,000 lbs.	33,000 lbs.	33,000 lbs.
GCWR	54,000 lbs.	54,000 lbs.	54,000 lbs.
Overall Length	39' 2"	41' 2"	39' 2"
Exterior Width	101"	101"	101"
Wheelbase	271"	286"	271"
Overall Exterior Height (w/15,000 BTU Roof A/C)	13' 0"	13' 0"	13' 0"
Interior Height	7'0"	7'0"	7'0"
Fuel Capacity	100 Gal.	100 Gal.	100 Gal.
Water Capacities (Gal.) Fresh/Gray/Black	100/52/52	100/52/52	100/52/52
Awning	13' 6"	18'	18'

Please refer to the back cover for chart definitions.



Sunrise Canyon



Midnight Sapphire



Velocity Red



Briarwood

Full Body Paint Selections designed by local artist Dean Loucks



Power, Prestige and Precision

Dynamax's reputation for elegantly styled body lines and head-turning paint is renown. Dynamax owners are indulged in first-class comfort with standout amenities that are second to none.

For the motorhome enthusiast, the drive is as important as the destination. We start with a commercial grade chassis designed to exceed the comfort and safety demands of professional drivers. The result...total engineering synergy from one end to the other, mile after mile, year after year.

Experience the complete package. Luxury living inside with head-turning good looks outside – all in a fun to own package – hand crafted by Dynamax.



At Dynamax, reaching a higher standard is not an option, it's a tradition.



2745 Northland Dr. ■ Elkhart IN 46514
888-295-7859 ■ www.dynamaxcorp.com

Your Authorized DynaQuest XL Dealer

GVWR (Gross Vehicle Weight Rating) - is the maximum permissible weight of the unit when fully loaded. It includes all weights, inclusive of all fluids, occupants, cargo, optional equipment and accessories. For safety and product performance do NOT exceed the GVWR.

GCWR (Gross Combined Weight Rating) - is the maximum permissible loaded weight of your motor home and any towed trailer or towed vehicle. Actual GCWR of this vehicle may be limited by the sum of the GVWR and the installed hitch receiver maximum capacity rating; see hitch rating label for detail.

GAWR (Gross Axle Weight Rating) - is the maximum permissible weight, including cargo, fluids, optional equipment and accessories that can be safely supported by each axle.

UVW (Unloaded Vehicle Weight)* - is the typical weight of the unit as manufactured at the factory. It includes all weight at the unit's axle(s), including full fuel, all fluids and LP Gas. The UVW does not include cargo, fresh potable water, additional optional equipment or dealer installed accessories.

CCC (Cargo Carrying Capacity)** - is the amount of weight available for fresh potable water, cargo, passengers, additional optional equipment and accessories. CCC is equal to GVWR minus UVW. Available CCC should accommodate fresh potable water (8.3 lbs. per gallon). Before filling the fresh water tank, empty the black and gray tanks to provide for more cargo capacity.

*Estimated Average based on standard build optional equipment.

**Estimated average based on standard build optional equipment.

Each Forest River RV is weighed at the manufacturing facility prior to shipping. A label identifying the unloaded vehicle weight of the actual unit and the cargo carrying capacity is applied to every Forest River RV prior to leaving our facilities.

The load capacity of your unit is designated by weight, not by volume, so you cannot necessarily use all available space when loading your unit.

Actual towing capacity is dependent upon your particular loading and towing circumstances, which includes the GVWR, GAWR and GCWR as well as adequate trailer brakes. Please refer to the Operator's Manual of your vehicle for further towing information.

All information contained in this brochure is believed to be accurate at the time of publication. However, during the model year, it may be necessary to make revisions and Forest River, Inc., reserves the right to make all such changes without notice, including prices, colors, materials, equipment and specifications as well as the addition of new models and the discontinuance of models shown in this brochure. Therefore, please consult with your Forest River dealer and confirm the existence of any materials, design or specifications that are material to your purchase decision. ©2015 Dynamax, a Division of Forest River, Inc., a Berkshire Hathaway company. All rights reserved. 2/16



PRE-DELIVERY INSPECTION FACILITY

20,000 square feet of quality assurance. The bare essentials for a premium product. This state-of-the-art facility gives immediate daily feedback to production for quality assurance in every unit built.



Forest River, Inc. encourages our customers to purchase their Forest River products from a local dealership whenever possible for the following reasons:

- 1) Forest River, Inc. dealers are independently owned and operated businesses so priority service and scheduling is at their discretion and is often provided to customers that purchased their unit at that dealership.
- 2) Purchasing locally allows customers to establish meaningful relationships with a dealer, enhancing the RV experience through assistance with product questions, user tips or RV regulations for your state or country, and much more!
- 3) Canadian customers must meet requirements to bring an RV purchased out of the country to their home. These requirements may involve additional inspections and certifications, taxes and fees. Your local Canadian Dealer is a professional at meeting these requirements.
- 4) Scheduling timely warranty repairs and adjustments through a local dealership provides far greater flexibility and convenience to you, the customer!

It is the goal of Forest River, Inc. that all of our RV owners fully enjoy the RV experience and that customer satisfaction meets or exceeds their expectations!

24/7 EMERGENCY ROADSIDE ASSISTANCE

For a worry-free ownership experience Forest River includes one year of Coach-Net RV Technical & Roadside Assistance with each RV purchase. Whether new to the RV lifestyle or an experienced RV enthusiast, Forest River owners have 24/7 access to technical, operational and emergency road service coverage throughout the US & Canada. Coach-Net's fast, dependable service is just a phone call away.

Coach-Net®

RV Technical & Roadside Assistance

FREE MEMBERSHIP to Forest River Owners' Group

www.forestriverfrog.com



Learn More
Scan this barcode using a QR Reader on your smart phone to learn more about Forest River.



A Berkshire Hathaway company.