

2016 JOURNEYER FLYER



# *Highland*

RIDGE RV



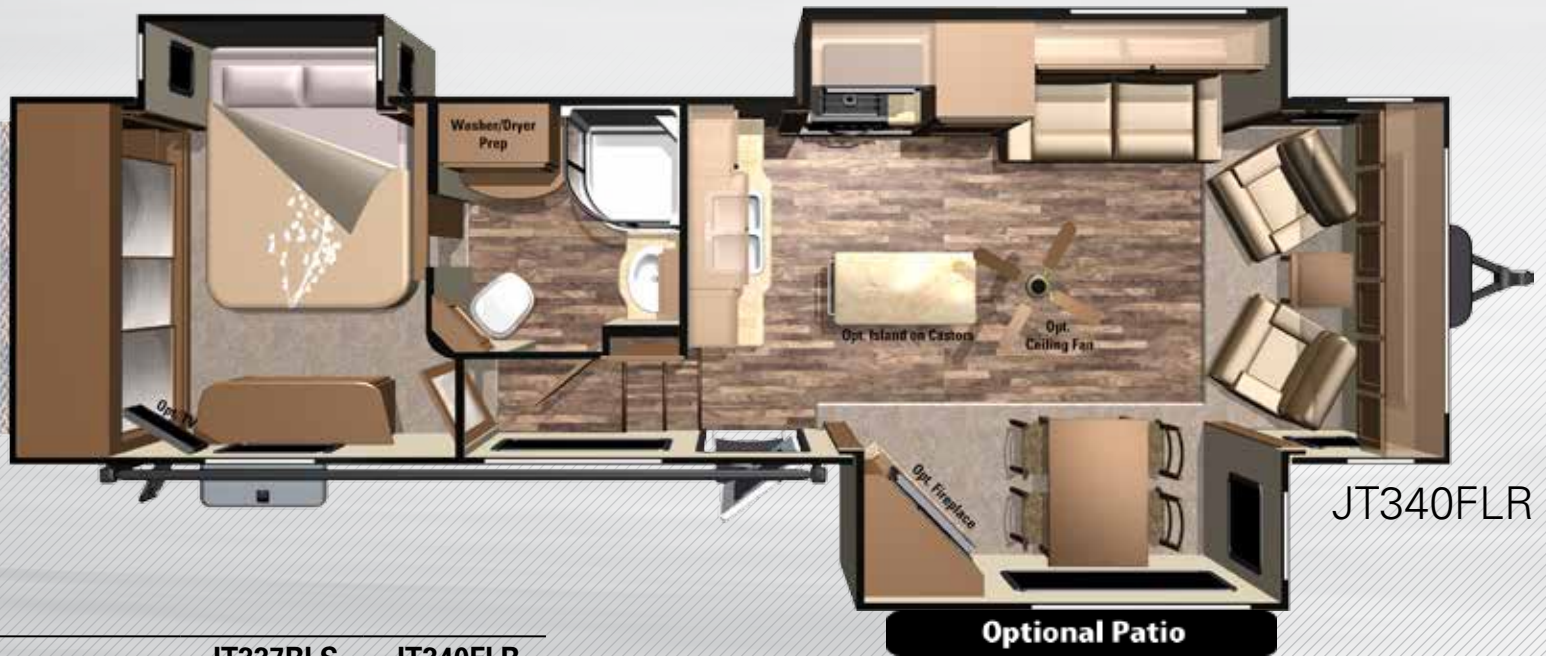
PREMIUM TRAVEL TRAILERS

OWN THE OUTDOORS

# JOURNEYER TRAVEL TRAILERS



JT337RLS



JT340FLR

**Optional Patio**

**Optional Patio**



	JT337RLS	JT340FLR
UVW	8870	9318
Hitch Wt.	795	1365
Length	36'4"	36'
Gross NCC	3925	2677

**ZERO DEGREE TESTED**

**THE RESULTS**

BEDROOM	.....	72°F
KITCHEN	.....	70°F
SLIDE-OUT	.....	66°F
BATHROOM	.....	72°F
LIVING ROOM	.....	70°F
WASTE WATER TANK	.....	62°F
STORAGE UNDER RV	.....	58°F



At Highland Ridge RV, Inc., we are one of the few manufacturers that have a 2-Year Limited Transferable Warranty. Ensuring our customers that we will stand behind our product for twice the amount of time that other manufacturers offer.





JT340FLR

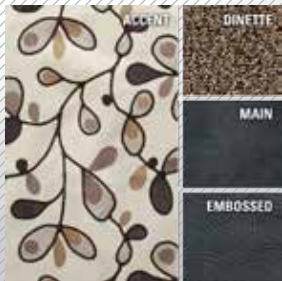
## DECOR OPTIONS



CHOCOLATE



SEDONNA



STONE



JT340FLR Ext. Storage

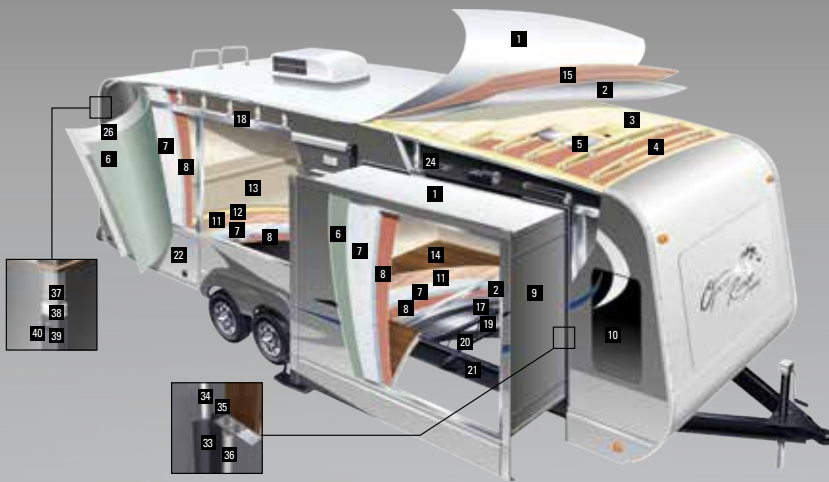


JT340FLR



JT340FLR





- |  |   |   |                    |
|--|---|---|--------------------|
| 1. PVC Roof Material                   | 11. Double Layer Luan   | 21. Steel I-Beam Frame                      | 38. Butyl Tape     |
| 2. R-38 Radiant Technology Insulation  | 12. Residential Rebound Carpet Pad                              | 22. 1" Thick Double Insulated Baggage Doors | 39. L-Molding      |
| 3. R-14 Batten Insulation              | 13. Carpet  | 24. Accu-Slide Slide-Out System             | 40. Geo-Cell Caulk |
| 4. 5" Roof Truss                       | 14. BeauFlor® Vinyl Flooring                                    | 26. Lamulux 1000 Gel Coated Fiberglass      |                    |
| 5. Foam A/C Ducting                    | 15. Plywood Decking   | 33. Rubber Seal (Outside)                   |                    |
| 6. SymaLite™ Exterior Wall Substrate   | 17. "Darco" Anti-Puncture Material                              | 34. Water Dam                               |                    |
| 7. R-9 Block Foam Insulation           | 18. 2" x 3" Aluminum Header                                     | 35. Rubber Seal (Inside)                    |                    |
| 8. Luan                                | 19. R-38 Radiant Technology Insulation (Extreme Arctic Package) | 36. Bulb Seal                               |                    |
| 9. Laminated Slide-Out End Walls (R-9) | 20. Polypropylene Underbelly                                    | 37. 3M Flashing Tape                        |                    |
| 10. Frameless Windows                  |   |   |                    |

## STANDARD FEATURES:

- High Output Range w/ Igniter & 22" Oven
- Lippert Wide-Stance Axles
- 100" Wide Body Frame
- Heavy Duty Full Extension Drawer Guides
- Lippert Equa-Flex Suspension
- PVC Roof Material
- Large Lavatory Sink
- Front & Rear Stabilizer Jacks
- Power Tongue Jack
- Nitrogen Filled Radial Tires
- Porcelain Toilet w/ Foot Pedal Flush
- LP Quick Connect
- French Door to Bedroom
- Ext. Utility Center w/ Black Tank Flush
- 60 Lbs. of LP Capacity
- 50 Amp Service
- Prepped for Back-Up Camera

## EXECUTIVE PACKAGE: (MANDATORY)

- Flat Screen TV in Living Area
- 12V CD/DVD Player w/Bluetooth®
- USB/12V Charging Port
- Multi-Port Satellite Hook-Up
- Digital TV Antenna w/Booster
- Large 8 Cu. Ft. Refrigerator
- 30" OTR Microwave
- 15k BTU A/C w/"Quick Cool" Feature
- 20 GPH Quick Recovery Gas/Electric Water Heater
- Corian® Countertops
- Fantastic Fan in Kitchen
- Power Awning w/ LED Awning Light
- Concealed Hinges
- Western Aspen Cabinet Doors
- LED Lighting in Ceiling
- Crown Molding
- Wired and Framed for 2nd A/C
- Full View Vented Entrance Door
- Frameless Windows
- Bedroom Speakers

## FOUR SEASONS PACKAGE: (MANDATORY)

- R-38 Insulation in Roof & Floor
- Heated and Enclosed Underbelly
- Heated & Enclosed Dump Valves
- R-14 Insulation in Sidewall
- Insulated Slide Floors
- Digital Thermostat
- Atwood® High Performance Furnace
- Double Insulated Baggage Doors
- Extreme Arctic Package
- Heated Storage Area

## OPTIONAL FEATURES:

- 24" Bedroom TV
- 2nd A/C (13.5k BTU Ducted)
- Dyson Vacuum Cleaner
- Fantastic Fan(s)
- One-Piece Neo-Round Shower
- Fireplace
- Corian® Island on Castors
- Ottoman w/ Storage
- Recliners IPO Swivel Rockers (Forced)
- 16" Aluminum Wheels & Tires (Forced)
- Back-Up Camera
- BBQ Grill
- Dual Pane Windows
- Lock Arm Stabilizers
- Metal Wrapped Awning
- Patio Deck - 10'(JT340FLR Only)
- Power Front & Rear Stab Jacks
- Rear Storage Tray
- Slide-Out Awning Covers

\*\*Please contact your local dealer to ensure availability of standards and options on a specific floorplan.



**Highland**  
RIDGE RV

Own the Outdoors

For more information visit us at:  
[www.HighlandRidgeRV.com](http://www.HighlandRidgeRV.com)

Due to continual research and advances, manufacturer reserves the right to change specifications, design, price, and equipment without notice, and assumes no responsibility for any error in the literature. Some items shown are not included as standard or optional equipment.



Your Open Range Journeyer Dealer: