

A NEW ERA IN ULTRA LITES

WESTERN EDITION

BULLET

Ultra Lite
by Keystone



DSI AWARD WINNER
6 years IN A ROW

www.keystonerv.com/Bullet

 Keystone RV
Company



BULLET 272BHSWE SHOWN IN SADDLE DECOR



EASY TO TOW WITH THE NEW MORE FUEL EFFICIENT CROSSOVERS, CARS AND TRUCKS, THE BULLET ULTRA LITE TRAVEL TRAILER HERALDS IN A NEW GENERATION OF RVs.

Sleek and smooth on the outside and loaded with features and conveniences inside, the new Bullet Ultra Lite will set you free to explore the open road.

www.keystonerv.com/Bullet

BULLET
Ultra Lite
 by Keystone



BULLET 272BHSWE KITCHEN



BULLET 210RUDWE



BULLET 272BHSWE LIVING AREA



BULLET 210RUDWE BATHROOM



EXTERIOR KITCHEN
(AVAILABLE ON 212RBSWE, 274BHSWE, 287QBSWE, AND 311BHSWE)



**THE INDUSTRY'S FIRST LUXURY
ULTRA LITE NOW HAS DEEPER
SLIDES AND MORE FEATURES!**

← 3 FEET WIDE! →

BULLET 248RKSWE SHOWN IN SADDLE DECOR



BULLET 247BHSWE KITCHEN SHOWN IN SADDLE DECOR

**CONVENIENCE,
COMFORT & STYLE**

**LAUNDRY CHUTE IN EVERY
BULLET FLOOR PLAN**



BULLET 220RBIWE BEDROOM



BULLET 220RBIWE KITCHEN SHOWN IN SADDLE DECOR 5

BULLET'S TOP FEATURES



Bullet is the only ultra lite travel trailer to offer the following climate control features in all floor plans:

BULLET	COMPETITION
Enclosed underbelly	Exposed Tanks
2" pipe off of furnace with forced air into underbelly and radiant heat	Radiant heat Only
30,000 BTU Furnace	20,000 - 25,000 BTU Furnace
Ducted Heat and A/C	Non Ducted Heat and A/C

1. 6 cu. ft. Refrigerator
2. Exterior Kitchen (212RBS, 274BHS, 287QBS, 311BHS)
3. Laundry Chute in Master Bedroom
4. Systems Monitor Panel
5. Blackout Shades in Bunk Rooms
6. Storage Underneath the Bed in Master Bedroom

Includes more standard features that matter
in light weight travel trailers.



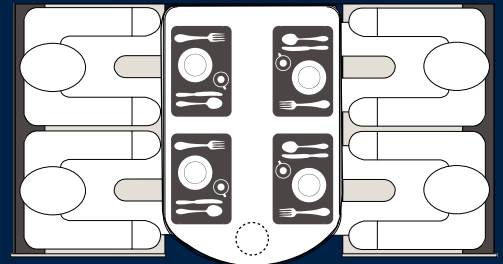
7. Gas Struts on Entry Doors
8. 9" Deep Single Basin Kitchen Sink (N/A 220RBI, 311BHS)
9. Largest Pass-Thru Storage in Class (40.3 cu. ft.)
10. CD/DVD/AM/FM/MP3/Bluetooth Stereo
11. Electric Adjustable Awning with LED Lighting
12. Hot/Cold Exterior Shower

COMPARE BULLET'S DINETTE TO THE COMPETITION



LARGE RADIUS DINETTE

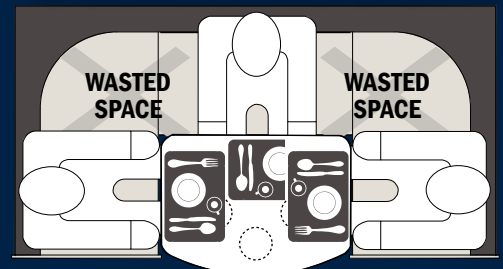
BULLET



COMFORTABLY SEATS 4 ADULTS

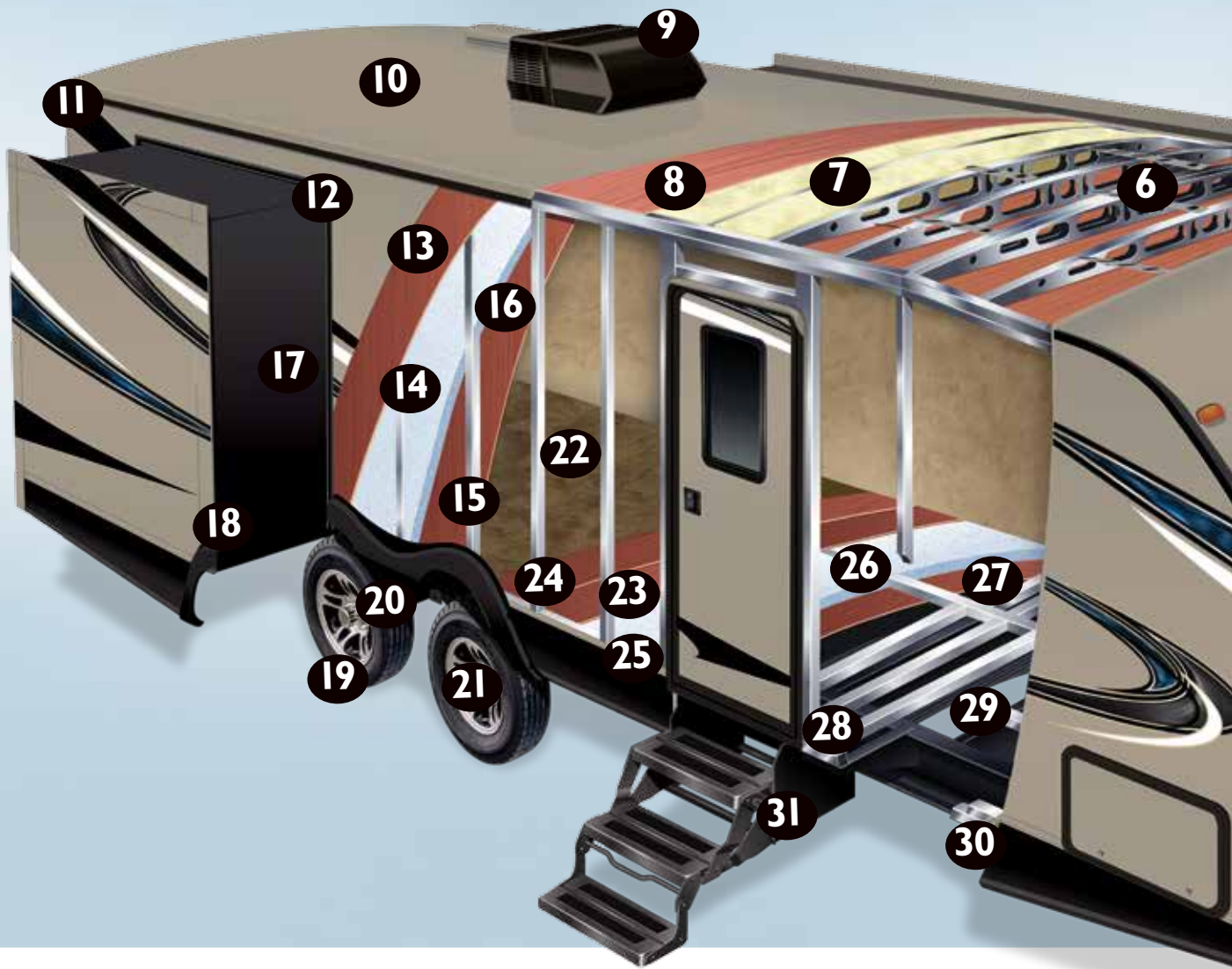
- PLENTY OF ROOM FOR 4 PLACEMATS
- ONLY NEEDS ONE TABLE SUPPORT
- CONVERTS TO 80" BED

COMPETITION



DON'T BE FOOLED! ONLY SEATS 3 ADULTS

- ONLY ENOUGH ROOM FOR 2.5 PLACEMATS
- 3 PEDESTAL SUPPORTS REDUCE LEG ROOM
- ALSO CONVERTS TO 80" BED



BEST TOWING TRAVEL TRAILER IN THE INDUSTRY

Increased MPG and Easier to Tow



REAR DEPARTURE ANGLE

Increases efficiency of wind flow underneath and behind the trailer



ENCLOSED UNDERBELLY

Eliminates turbulence caused by exposed frame members, holding tanks, plumbing etc.



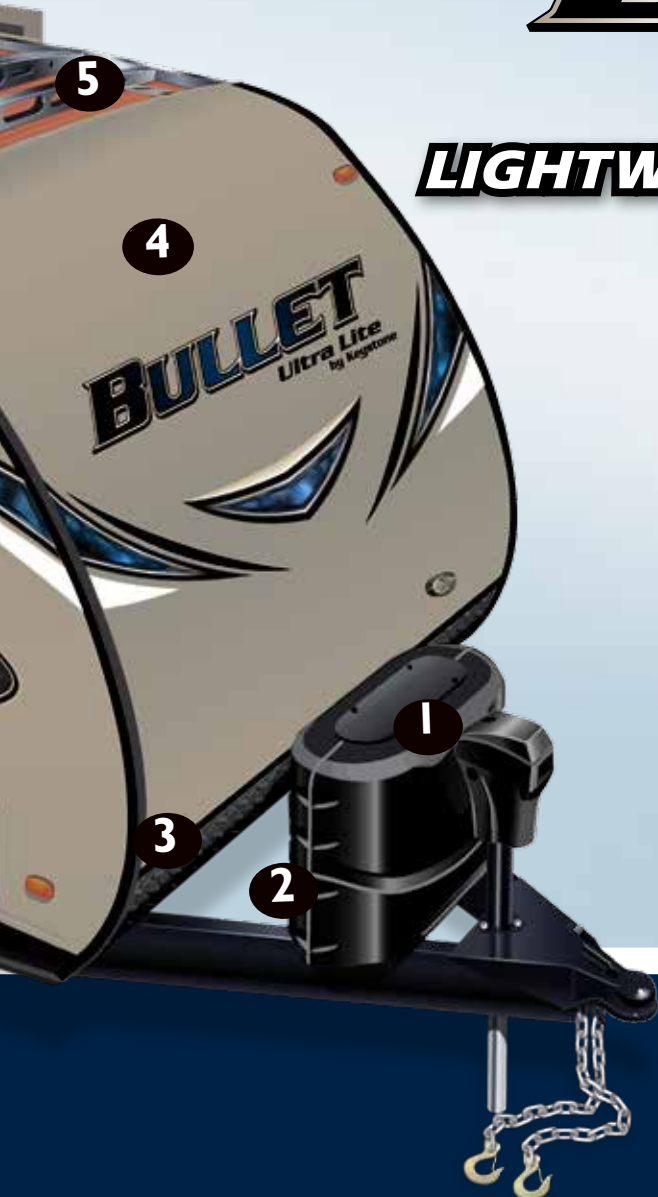
43" WIDE STANCE AXLES

Wider base greatly reduces sway and bouncing

BULLET

Ultra Lite
by Keystone

LIGHTWEIGHT SOLID CONSTRUCTION

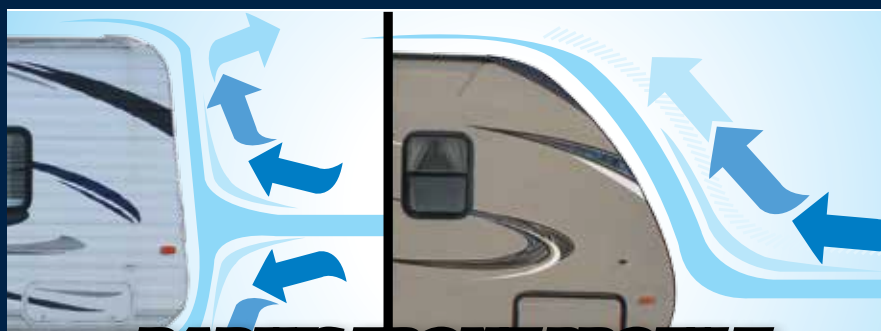


1. Quick Access LP Cover
2. Integrated Dual Battery Tray
3. Diamond Plate Stone Guard
4. Aerodynamic Front Profile
5. Hurricane Straps
6. 5" Radius Galvanized Stamped Steel Roof Trusses
7. Fully Insulated Roof
8. 3/8" OSB Durable Roof Decking
9. 13.5 Quick Cool Air Conditioning
10. One Piece TPO Roof
11. Full Length Rain Gutter and 4" Drip Spouts
12. Smooth Fiberglass Exterior
13. 1/8" Luan Wall Backing
14. Hi-Density Block Foam Insulation
15. 1 1/2" Box Welded Aluminum Frame Structure
16. Decorative Interior Wall Board
17. Aluminum Cage Construction
18. Bullet's Multi Seal and Track Slide System
19. Radial Tires with Electric Brakes (4)
20. Wide Stance Axle System
21. Easy Lube Axles
22. Residential Stain Resistant Trek Linoleum (resistant to cold cracking)
23. Plyveneer Floor Decking (water resistant)
24. 2" Laminated Floor
25. Hi-Density In Floor Block Foam Insulation
26. Double Welded Aluminum Floor Joists
27. 3rd Layer Floor Decking
28. 6.5" - 10" Steel I-Beam Frame
29. Darco Moisture Barrier Wrap
30. Heated and Enclosed Underbelly
31. Radius Triple Entry Steps



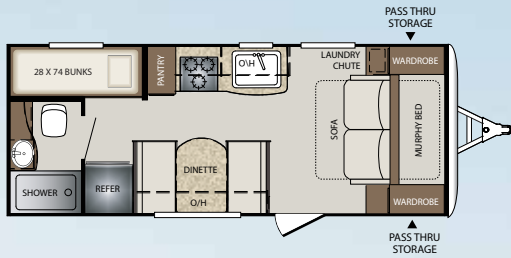
SAVE MONEY ON FUEL

Our lightweight floor plans are 1000-1500 lb. lighter than comparable competitors trailers



RADIUS FRONT PROFILE VS. COMPETITION

The radius front profile of the Bullet travel trailer gives the optimal contour to reduce wind resistance when traveling down the road.



202BHSWE NEW



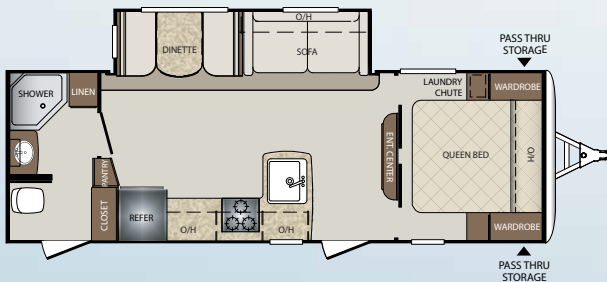
204RBSWE



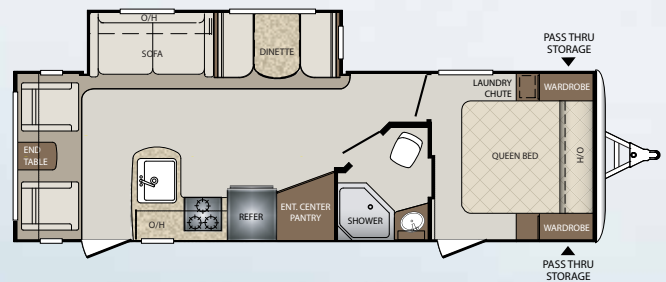
220RBIWE



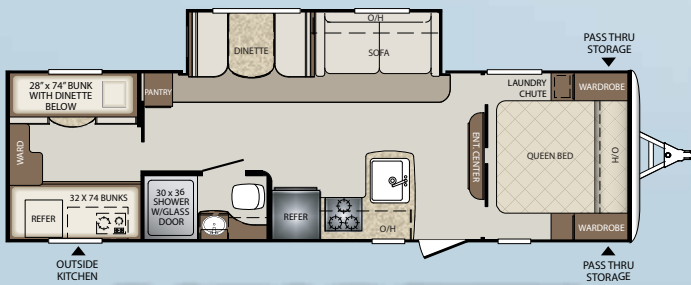
230BHSWE



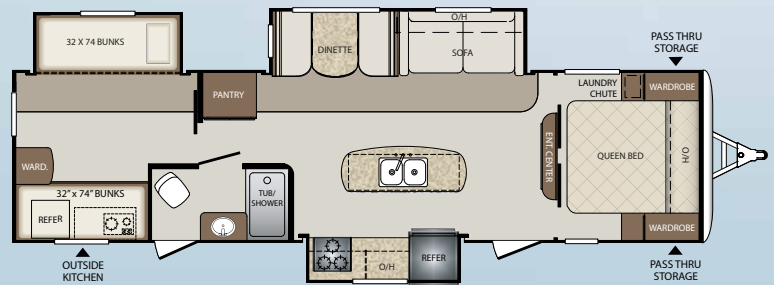
251RBSWE



269RLSWE



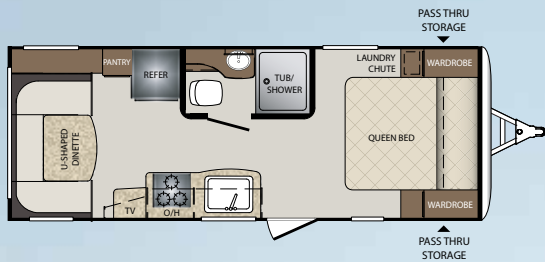
287OBSWE



311BHSWE NEW

www.keystonerv.com/Bullet
BULLET
 Ultra Lite
 by Keystone

Product information is as accurate as possible at the date of publication of this brochure. Features, floor plans, and specifications are subject to change without notice. Please also consult Keystone's web site at keystonerv.com for more current product information and specifications. Tow Vehicle Disclaimer. CAUTION: Owners of Keystone recreational vehicles are solely responsible for the selection and proper use of tow vehicles. All customers should consult with a motor vehicle manufacturer or their dealer concerning the purchase and use of suitable tow vehicles for Keystone products. Keystone disclaims any liability or damages suffered as a result of the selection, operation, use or misuse of a tow vehicle. KEYSTONE'S LIMITED WARRANTY DOES NOT COVER DAMAGE TO THE RECREATIONAL VEHICLE OR THE TOW VEHICLE AS A RESULT OF THE SELECTION, OPERATION, USE OR MISUSE OF THE TOW VEHICLE. *Length is defined as the distance from the centerline of the hitch pin/coupler to rear bumper of the trailer.



210RUDWE



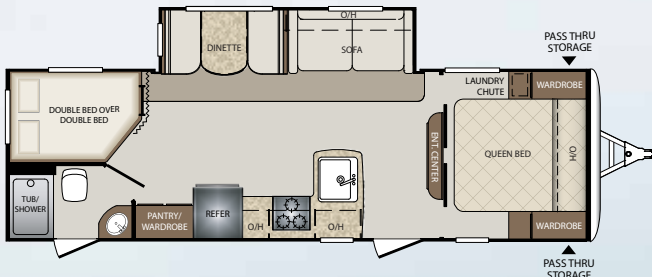
212RBSWE



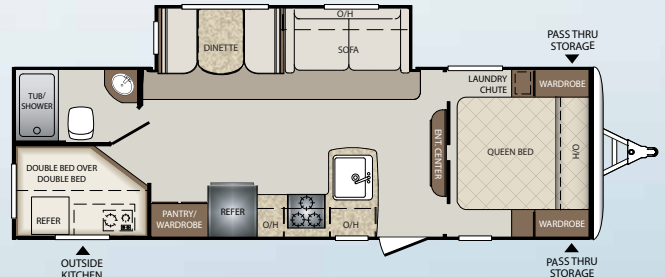
247BHSWE



248RKSWE



272BHSWE



274BHSWE

WEIGHTS & MEASUREMENTS

MODEL	SHIPPING WEIGHT	CARRYING CAPACITY	HITCH	LENGTH*	HEIGHT	FRESH WATER	WASTE WATER	GRAY WATER	LPG	AWNING
202BHSWE	3830	2170	410	23' 10"	10' 3"	43	30	30	40	14'
204RBSWE	3876	2124	430	23' 11"	10' 3"	41	30	30	40	15'
210RUDWE	4071	2329	460	25' 5"	10' 3"	43	30	30	40	15'
212RBSWE	4539	2261	490	25' 6"	10' 3"	43	30	30	40	12'
220RBIWE	4754	1646	480	25' 7"	10' 3"	43	30	30	40	15'
230BHSWE	4530	2470	530	27'	10' 3"	43	30	30	40	15'
247BHSWE	4745	2255	510	28' 3"	10' 1"	43	30	30	40	15'
248RKSWE	4994	2206	606	28' 10"	10' 2"	43	30	30	40	15'
251RBSWE	5048	2452	500	29' 1"	10' 1"	43	30	60	40	14'
269RLSWE	5248	2352	636	30' 11"	10' 2"	43	30	30	40	15'
272BHSWE	5197	2373	570	30' 9"	10' 1"	43	30	30	40	15'
274BHSWE	5248	2348	596	30' 9"	10' 2"	43	30	30	40	20'
287QBSWE	5758	1842	740	32' 10"	10' 1"	43	30	30	40	15'
311BHSWE	6855	1945	860	35' 8"	11'	43	30	60	40	19'

STANDARDS & OPTIONS

CONSTRUCTION STANDARDS

- Aggressive Front Profile for Increased Towability
- Aluminum Framed Front, Rear, and Side Walls
- Aluminum Framed Slideouts
- Laminated Fiberglass Exterior Side Walls
- 2" Thick Laminated Aluminum Floor
- In-Frame Fresh, Grey, and Black Water Tanks
- 6.5" - 10" Steel I-Beam Frame with Welded Outriggers
- 1/4" ABS Enclosed Underbelly
- Darco Moisture Barrier
- One Piece TPO Roof
- E-Z Lube Axles
- Electric Brake System (4 wheels)
- R-11 Insulation in Floor
- R-7 Insulation in Sidewalls
- R-11 Insulation in Roof

EXTERIOR CAMPING PACKAGE

- Wide Stance E-Z Lube Axles
- 6 Gallon Gas/Electric DSI Water Heater with quick recovery
- Radius Entry Door with Gas Strut
- Outside Speakers
- Outside Shower (Hot & Cold Water)
- Tinted Safety Glass Windows
- 4 Stabilizer Jacks
- TV Antenna & Cable/Satellite Hook-Up
- Electric Awning with LED Lights and Adjustable Arms
- Radial Tires
- Black Tank Flush

EXTERIOR FEATURES

- Dual Propane Tanks with Cover
- Front Diamond Plate
- In Frame Dual Battery Rack
- Oversized Exterior Pass Thru Storage with Lighting
- Contoured Fender Skirts for Increased Air-Flow
- LP Quick Connect
- Spare Tire
- Extended 4" Down Spouts
- Triple Entry Steps
- Oversized Grab Handle
- Aluminum Wheels
- 15" Wheels and Tires
- Solar Prep
- Power Tongue Jack

INTERIOR CAMPING PACKAGE

- 13.5 BTU Ducted A/C
- Night Shades
- CD/DVD/AM/FM Bluetooth Stereo with Aux and I-Pod Hookup
- 32" LED TV
- Microwave
- 6 cu./ft. Double Door Refrigerator
- 3 Burner High Output Range
- 9" Deep Oversized Single Basin Sink with High Rise Faucet (N/A 220, 311)
- Glazed Hardwood Cabinet Doors
- Foot Flush Toilet
- Tub Surround with Shelves
- Full Extension Drawer Glides
- Interior LED Lighting

INTERIOR FEATURES

- 78" Interior Height
- Fiberglass Reinforced Flooring
- Residential Style Furniture
- Water Heater-By-Pass for Winterization
- Night Shades in Living Area
- 17" Oven
- Tri-Fold Sofa

BATHROOM

- Towel Hooks
- Deluxe Curved Shower Curtain
- Power Vent Fan
- Solid Wood Medicine Cabinet
- Linen Storage

MASTER BEDROOM

- Upgraded Innerspring Mattress
- Dual 110V Outlets
- Mirrored Wardrobes
- Laundry Chute
- Under Bed Storage
- Full Blackout Window Treatments
- Individual Reading Lights
- Wood Doors for All Bedrooms (N/A 202, 204, and 210)

BUNK ROOMS

- Cable & TV Hookups (Per Floor Plan)
- Full Blackout Window Treatments
- Oversized Wardrobe with Rod (Some Floor Plans)
- Wood Pocket Doors for All Bunk Rooms

THERMAL PACKAGE

- Ducted Heat & Enclosed Underbelly
- 2" Duct off of Furnace to Underbelly
- 30K BTU Furnace
- Residential Heat Ducts



SAFETY EQUIPMENT

- Carbon Monoxide Detector
- Smoke Alarm
- Fire Extinguisher
- Electric Brakes
- Safety Chains
- Tinted Safety Glass Windows
- Egress Windows (Fire Escape)
- GFI Electrical Outlets

OPTIONS

- 15K A/C
- RVQ Grill

SADDLE



CHARCOAL



Annual RVDA DEALER SATISFACTION INDEX

AWARD WINNER
6 years IN A ROW

Go RVing
Life's A Trip™



YOUR LOCAL DEALER:

LEARN MORE



www.keystonerv.com/Bullet
BULLET
Ultra Lite
by Keystone



Keystone RV Company

www.keystonerv.com

2642 Hackberry Drive | PO Box 2000
Goshen, IN 46527-2000
(574) 535-2100

DECEMBER 2015

A NEW ERA IN ULTRA LITES

EASTERN EDITION

BULLET

Ultra Lite

by Keystone



DSI

Annual RVDA DEALER
SATISFACTION INDEX
AWARD WINNER
5 years IN A ROW

www.keystonerv.com/Bullet

 Keystone RV
Company



BULLET 287QBS SHOWN IN SADDLE DECOR



EASY TO TOW WITH THE NEW MORE FUEL EFFICIENT CROSSOVERS, CARS AND TRUCKS, THE BULLET ULTRA LITE TRAVEL TRAILER HERALDS IN A NEW GENERATION OF RVs.

Sleek and smooth on the outside and loaded with features and conveniences inside, the new Bullet Ultra Lite will set you free to explore the open road.

www.keystonerv.com/Bullet

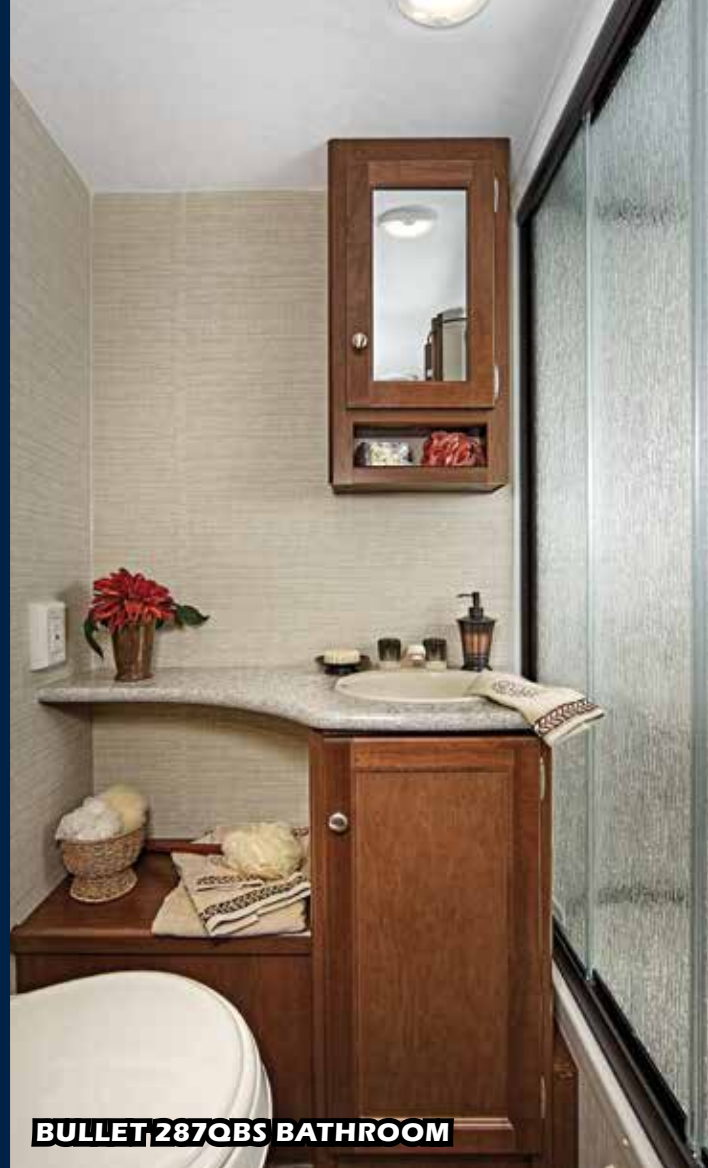
BULLET
Ultra Lite
 by Keystone



BULLET 287QBS KITCHEN STORAGE



BULLET 287QBS BUNK ROOM WITH POCKET DOORS



BULLET 287QBS BATHROOM



EXTERIOR KITCHEN
(AVAILABLE ON 243BHS, 274BHS, 287QBS, 308BHS, 311BHS)



**THE INDUSTRY'S FIRST LUXURY
ULTRA LITE NOW HAS DEEPER
SLIDES AND MORE FEATURES!**

← 3 FEET WIDE! →

**REVERSIBLE
DINETTE CUSHIONS**

BULLET 248RKS SHOWN IN CHARCOAL DECOR

BULLET 248RKS KITCHEN SHOWN IN CHARCOAL DECOR



**CONVENIENCE,
COMFORT & STYLE**

**LAUNDRY CHUTE IN EVERY
BULLET FLOOR PLAN**



BULLET 287QBS BEDROOM WITH POCKET DOORS SHOWN IN SADDLE DECOR



BULLET 287QBS SOFA AND DINETTE SHOWN IN SADDLE DECOR

BULLET'S TOP FEATURES



Bullet is the only ultra lite travel trailer to offer the following climate control features in all floor plans:

BULLET	COMPETITION
Enclosed underbelly	Exposed Tanks
2" pipes off of furnace with forced air into underbelly and radiant heat	Radiant heat Only
30,000 BTU Furnace	20,000 - 25,000 BTU Furnace
Ducted Heat and A/C	Non Ducted Heat and A/C

1. 6 cu. ft. Refrigerator
2. Exterior Kitchen (243BHS, 287QBS, 308BHS, 311BHS)
3. Laundry Chute in Master Bedroom
4. Labeled Systems Monitor Panel
5. Blackout Shades in Bunk Rooms
6. Storage Underneath the Bed in Master Bedroom

*Includes more standard features that matter
in light weight travel trailers.*



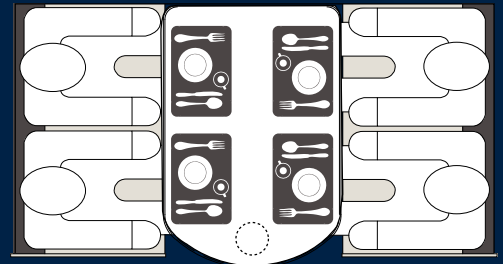
7. Gas Struts on Entry Doors
8. 9" Deep Single Basin Kitchen Sink (N/A 220RBI, 311BHS)
9. Largest Pass-Thru Storage in Class (40.3 cu. ft.)
10. CD/DVD/AM/FM/MP3/Bluetooth Stereo
11. Electric Adjustable Awning with LED Lighting
12. Hot/Cold Exterior Shower

COMPARE BULLET'S DINETTE TO THE COMPETITION



**LARGE BOOTH DINETTE
W/REVERSIBLE CUSHIONS**

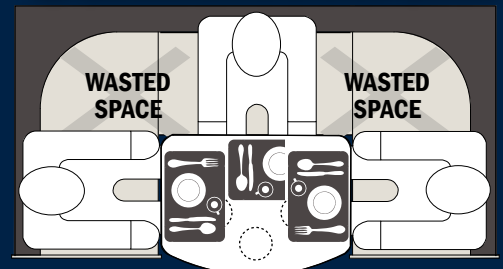
BULLET



**COMFORTABLY
SEATS 4 ADULTS**

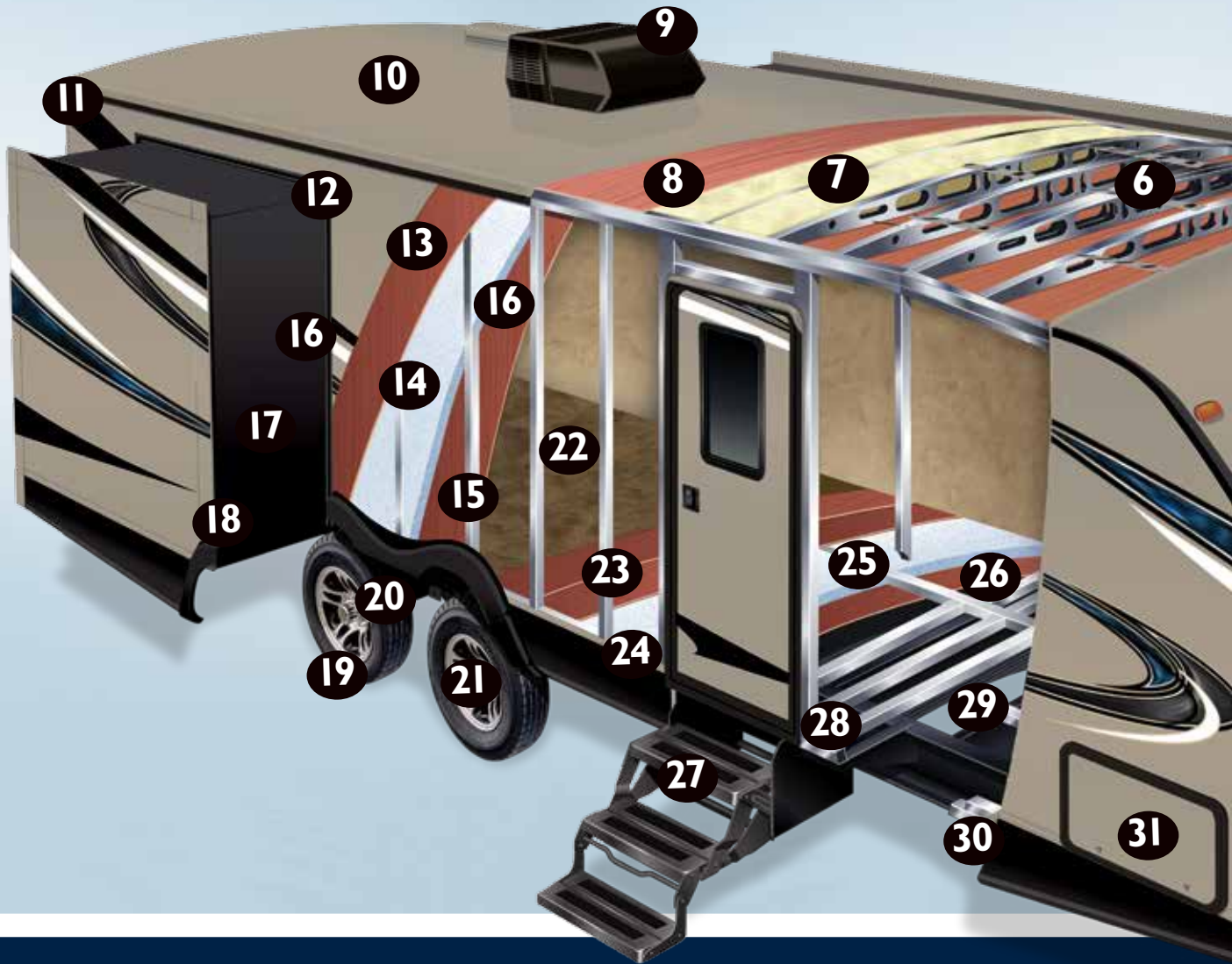
- PLENTY OF ROOM FOR 4 PLACEMATS
- ONLY NEEDS ONE TABLE SUPPORT
- CONVERTS TO 80" BED

COMPETITION



**DON'T BE FOOLED!
ONLY SEATS 3 ADULTS**

- ONLY ENOUGH ROOM FOR 2.5 PLACEMATS
- 3 PEDESTAL SUPPORTS REDUCE LEG ROOM
- ALSO CONVERTS TO 80" BED



BEST TOWING TRAVEL TRAILER IN THE INDUSTRY

Increased MPG and Easier to Tow



REAR DEPARTURE ANGLE

Increases efficiency of wind flow underneath and behind the trailer



ENCLOSED UNDERBELLY

Eliminates turbulence caused by exposed frame members, holding tanks, plumbing etc.



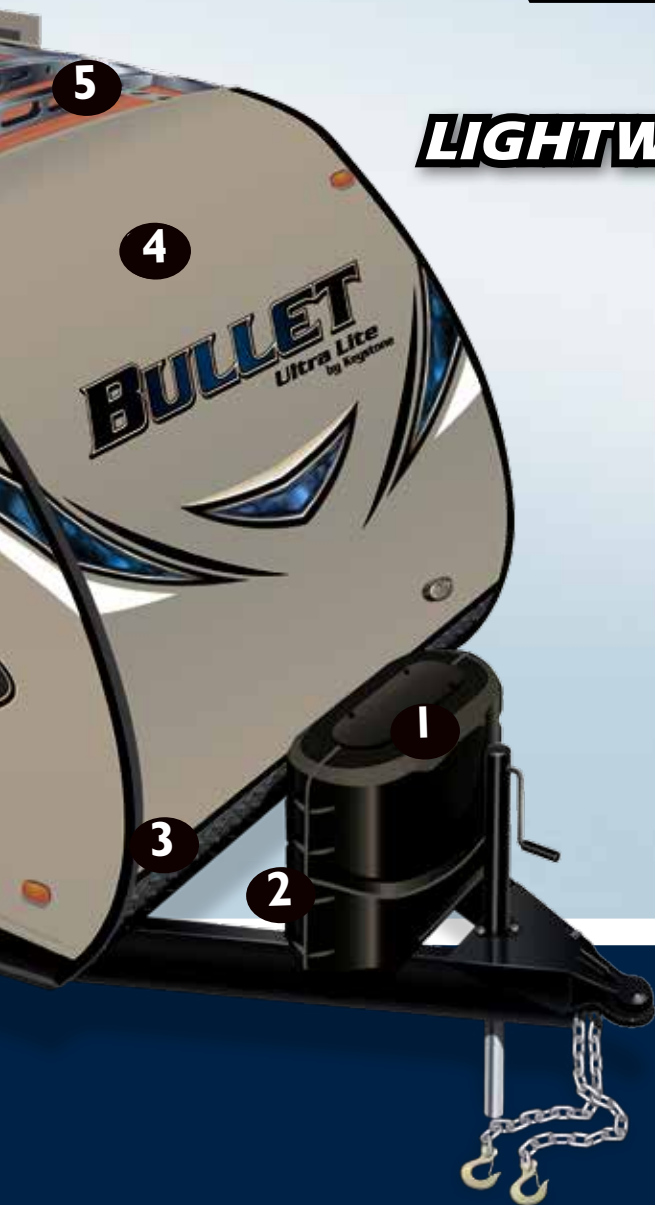
43" WIDE STANCE AXLES

Wider base greatly reduces sway and bouncing

BULLET

Ultra Lite
by Keystone

LIGHTWEIGHT SOLID CONSTRUCTION

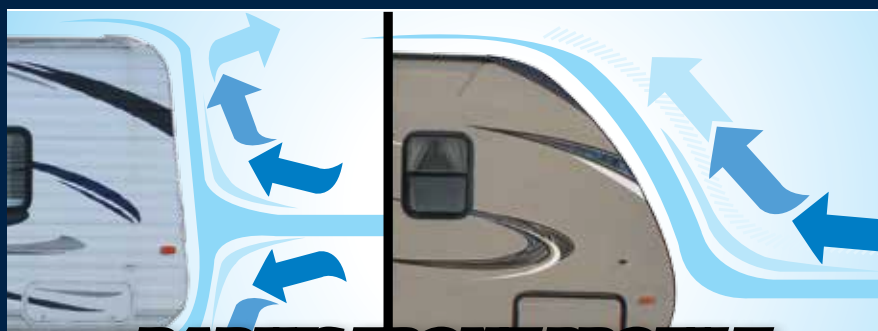


1. Quick Access LP Cover
2. Integrated Dual Battery Tray
3. Diamond Plate Stone Guard
4. Aerodynamic Front Profile
5. Hurricane Straps
6. 5" Radius Galvanized Stamped Steel Roof Trusses
7. Fully Insulated Roof
8. Durable Roof Decking
9. 13.5 Quick Cool Air Conditioning
10. One Piece TPO Roof
11. Full Length Rain Gutter and 4" Drip Spouts
12. Smooth Fiberglass Exterior
13. 1/8" Luan Wall Backing
14. Hi-Density Block Foam Insulation
15. 1 1/2" Box Welded Aluminum Frame Structure
16. Decorative Interior Wall Board
17. Aluminum Frame Slide Boxes
18. Bullet's Multi Seal and Track Slide System
19. Radial Tires with Electric Brakes (4)
20. Wide Stance Axle System
21. Easy Lube Axles
22. Residential Stain Resistant Trek Linoleum (resistant to cold cracking)
23. Plyvener Floor Decking (water resistant)
24. Hi-Density In Floor Block Foam Insulation
25. Double Welded Aluminum Floor Joists
26. 3rd Layer Floor Decking
27. Radius Triple Entry Steps
28. 6.5" - 10" Steel I-Beam Frame
29. Darco Moisture Barrier Wrap
30. Heated and Enclosed Underbelly
31. Aluminum Framed Pass-Thru Storage



SAVE MONEY ON FUEL

Our lightweight floor plans are 1000-1500 lb. lighter than comparable competitors trailers



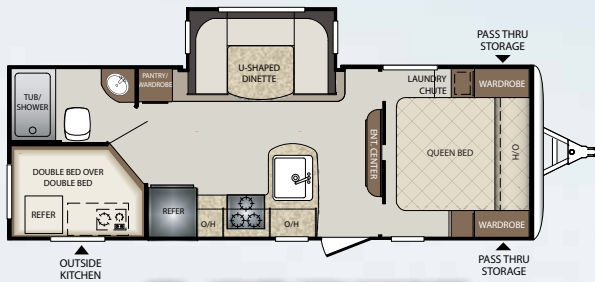
RADIUS FRONT PROFILE VS. COMPETITION

The radius front profile of the Bullet travel trailer gives the optimal contour to reduce wind resistance when traveling down the road.



220RBI

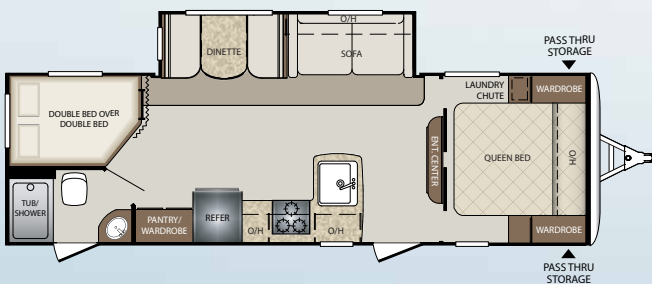
www.keystonerv.com/Bullet
BULLET
 Ultra Lite
 by Keystone



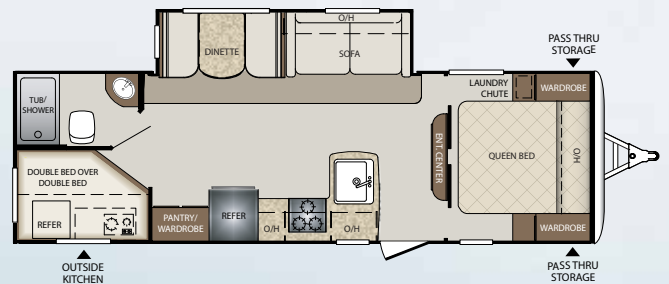
243BHS



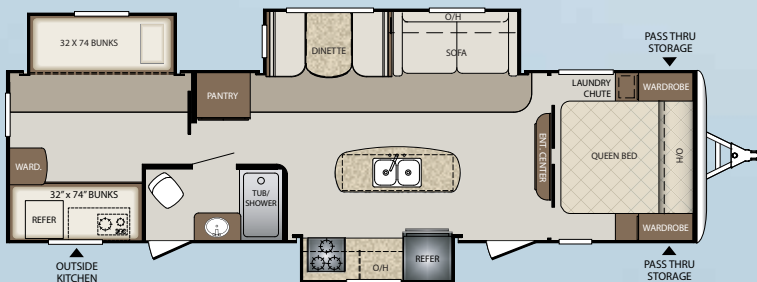
248RKS



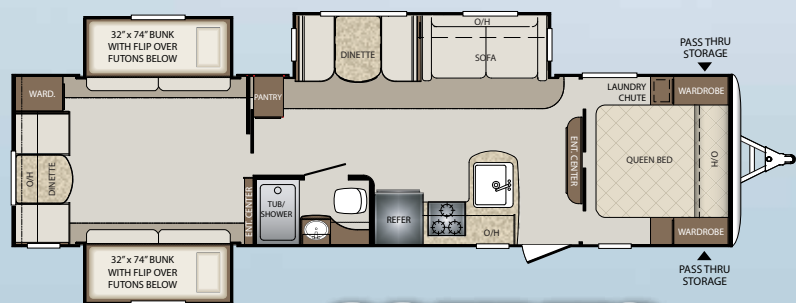
272BHS



274BHS



311BHS NEW



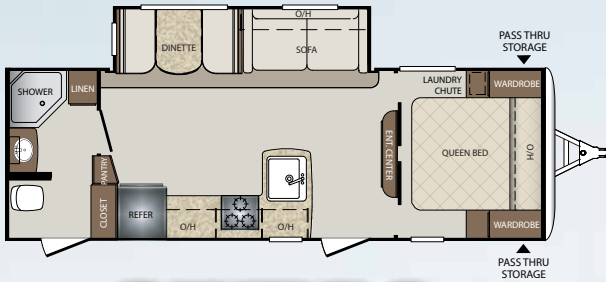
335BHS

Product information is as accurate as possible at the date of publication of this brochure. Features, floor plans, and specifications are subject to change without notice. Please also consult Keystone's web site at keystonerv.com for more current product information and specifications. Tow Vehicle Disclaimer. CAUTION: Owners of Keystone recreational vehicles are solely responsible for the selection and proper use of tow vehicles. All customers should consult with a motor vehicle manufacturer or their dealer concerning the purchase and use of suitable tow vehicles for Keystone products. Keystone disclaims any liability or damages suffered as a result of the selection, operation, use or misuse of a tow vehicle. KEYSTONE'S LIMITED WARRANTY DOES NOT COVER DAMAGE TO THE RECREATIONAL VEHICLE OR THE TOW VEHICLE AS A RESULT OF THE SELECTION, OPERATION, USE OR MISUSE OF THE TOW VEHICLE. *Length is defined as the distance from the centerline of the hitch pin/coupler to rear bumper of the trailer.

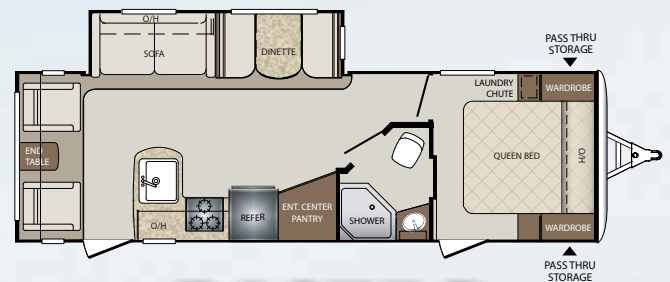


TRAVEL TRAILER FLOOR PLANS

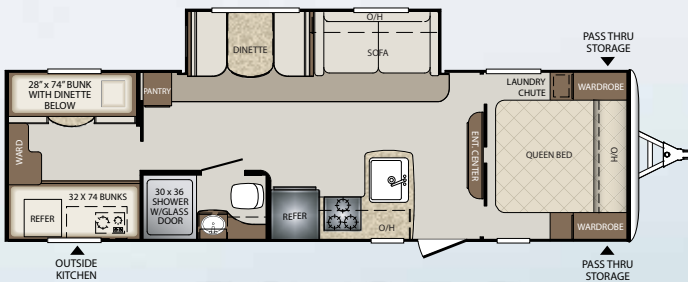
You'll find a Bullet floor plan to fit your lifestyle perfectly.



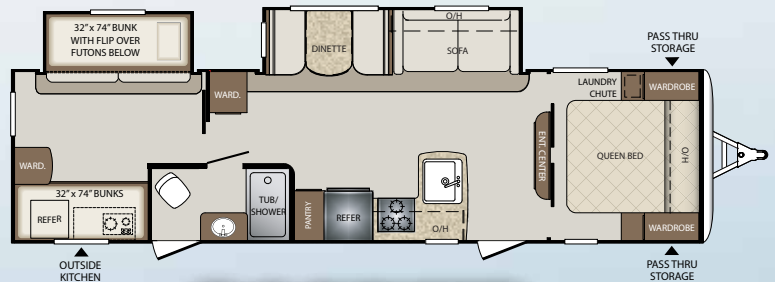
251RBS



269RLS



287QBS



308BHS

WEIGHTS & MEASUREMENTS

MODEL	SHIPPING WEIGHT	CARRYING CAPACITY	HITCH	LENGTH*	HEIGHT	FRESH WATER	WASTE WATER	GRAY WATER	LPG	AWNING
220RBI	4611	1789	450	25' 7"	10' 7"	43	30	30	40	15'
243BHS	4703	1797	555	27' 10"	10' 7"	43	30	30	40	19'
248RKS	4859	1641	535	28' 10"	10' 7"	43	30	60	40	15'
251RBS	4963	2037	500	29' 1"	10' 7"	43	30	30	40	14'
269RLS	5193	2392	585	30' 11"	10' 7"	43	30	30	40	15'
272BHS	5068	2472	540	30' 9"	10' 7"	43	30	30	40	15'
274BHS	5095	2490	585	30' 9"	10' 7"	43	30	30	40	20'
287QBS	5477	2123	695	32' 10"	10' 7"	43	30	30	40	15'
308BHS	5980	1620	700	35' 6"	10' 8"	43	30	30	40	19'
311BHS	6880	1920	865	35' 8"	11'	43	30	60	40	19'
335BHS	6506	2094	865	37'	11'	43	30	30	40	15'

STANDARDS & OPTIONS

CONSTRUCTION STANDARDS

- Aggressive Front Profile for Increased Towability
- Aluminum Framed Front, Rear, and Side Walls
- Aluminum Framed Slideouts
- Laminated Fiberglass Exterior Side Walls
- 2" Thick Laminated Aluminum Floor
- In-Frame Fresh, Grey, and Black Water Tanks
- 6.5" - 10" Steel I-Beam Frame with Welded Outriggers
- 1/4" ABS Enclosed Underbelly
- Darco Moisture Barrier
- One Piece TPO Roof
- E-Z Lube Axles
- Electric Brake System (4 wheels)
- R-11 Insulation in Floor
- R-7 Insulation in Sidewalls
- R-11 Insulation in Roof

EXTERIOR CAMPING PACKAGE

- Wide Stance E-Z Lube Axles
- 6 Gallon Gas/Electric DSI Water Heater with quick recovery
- Radius Entry Door with Gas Strut
- Outside Speakers
- Outside Shower (Hot & Cold Water)
- Tinted Safety Glass Windows
- 4 Stabilizer Jacks
- TV Antenna & Cable/Satellite Hook-Up
- Electric Awning with LED Lights and Adjustable Arms
- Radial Tires

EXTERIOR FEATURES

- Black Tank Flush
- Dual Propane Tanks with Cover
- Front Diamond Plate
- In Frame Dual Battery Rack
- Oversized Exterior Pass Thru Storage with Lighting
- Contoured Fender Skirts for Increased Air-Flow
- LP Quick Connect
- Spare Tire
- Extended 4" Down Spouts
- Triple Entry Steps
- Oversized Grab Handle
- Aluminum Wheels

INTERIOR CAMPING PACKAGE

- 13.5 BTU Ducted A/C
- Night Shades
- CD/DVD/AM/FM Bluetooth Stereo with Aux and I-Pod Hookup
- 32" LED TV
- Microwave
- 6 cu./ft. Double Door Refrigerator
- 3 Burner High Output Range
- 9" Deep Oversized Single Basin Sink with High Rise Faucet (N/A 220, 311)
- Glazed Hardwood Cabinet Doors
- Foot Flush Toilet
- Tub Surround with Shelves
- Full Extension Drawer Glides

INTERIOR FEATURES

- 78" Interior Height
- Fiberglass Reinforced Flooring
- Residential Style Furniture
- Water Heater-By-Pass for Winterization
- Night Shades in Living Area
- 17" Oven
- Radius Dinette
- Interior LED Lights

BATHROOM

- Towel Hooks
- Deluxe Curved Shower Curtain
- Power Vent Fan
- Solid Wood Medicine Cabinet
- Linen Storage

MASTER BEDROOM

- Upgraded Foam Mattress
- Dual 110V Outlets
- Mirrored Wardrobes
- Laundry Chute
- Under Bed Storage
- Full Blackout Window Treatments
- Individual LED Reading Lights
- Hardwood Entry Doors

BUNK ROOMS

- Cable & TV Hookups (Per Floor Plan)
- Full Blackout Window Treatments
- Oversized Wardrobe with Rod (Some Floor Plans)
- Wood Pocket Doors

THERMAL PACKAGE

- Ducted Heat & Enclosed Underbelly
- 2" Duct off of Furnace to Underbelly
- 30K BTU Furnace
- Residential Heat Ducts



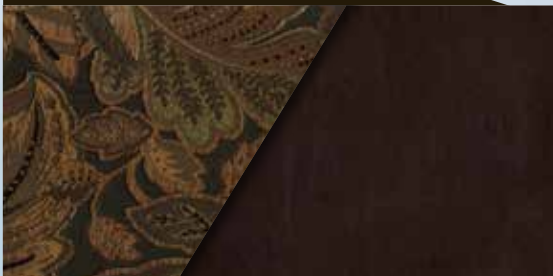
SAFETY EQUIPMENT

- Carbon Monoxide Detector
- Smoke Alarm
- Fire Extinguisher
- Electric Brakes
- Safety Chains
- Tinted Safety Glass Windows
- Egress Windows (Fire Escape)
- GFI Electrical Outlets

OPTIONS

- 15K A/C
- 50 AMP Service with 2nd A/C (308, 311, 335 Only)
- Bumper Mounted Aussie Grill (N/A 287, 308)
- Tri-Fold Sofa (N/A 220, 243)

SADDLE



CHARCOAL



YOUR LOCAL DEALER:

LEARN MORE



www.keystonerv.com/Bullet
BULLET
Ultra Lite
by Keystone



Keystone RV Company
www.keystonerv.com

2642 Hackberry Drive | PO Box 2000
Goshen, IN 46527-2000
(574) 535-2100



Go RVing
Life's A Trip™



NOVEMBER 2015