

# FLAIR

 FLEETWOOD RV

2016 CLASS A GAS

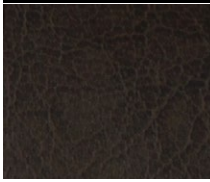
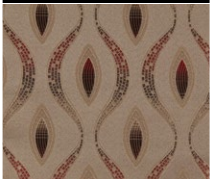
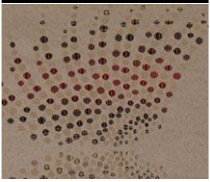
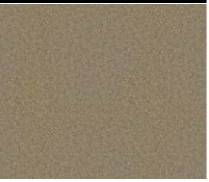



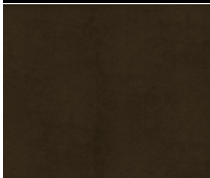


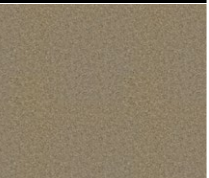
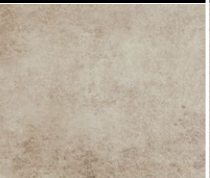




## TOP FEATURES

- Hardwood Cabinet Doors w/Euro Hinges
- Bedroom 19" LED TV Standard
- Vetrolite® Ultra-Thick Fiberglass Skin (no wood substrate)
- Full-Body Paint
- Intense Halogen Projector Headlamps
- Exterior LED Accent Lights
- Power Awning w/LED Light Strip
- Side-View Camera Package
- Exterior Entertainment Center
- Tinted Frameless Windows
- Soft-Touch Vinyl Ceiling w/Ducted Air
- Blindspot Safety "Doggy" Window
- Aluminum Bus-Style Side Swing Luggage Doors
- Powerlock System™ w/Interlocking Walls & Ceiling
- Powerframes™ Precision Welding w/5-Point Build System
- F-21 Construction & Manufacturing Technology
- Hide-A-Loft™ Drop Down Queen Bed (Optional)
- 4-Point Hydraulic Levelers (Optional)

#Flair4Le\$\$

# 2016 Flair Décors

SANGRIA						CABINETRY
SOFA	ACCENT	BEDSPREAD	COUNTERTOP	FLOORING	CARPET	BARCELONA
						
MIDTOWN MINK						BUTTERNUT
SOFA	ACCENT	BEDSPREAD	COUNTERTOP	FLOORING	CARPET	
						

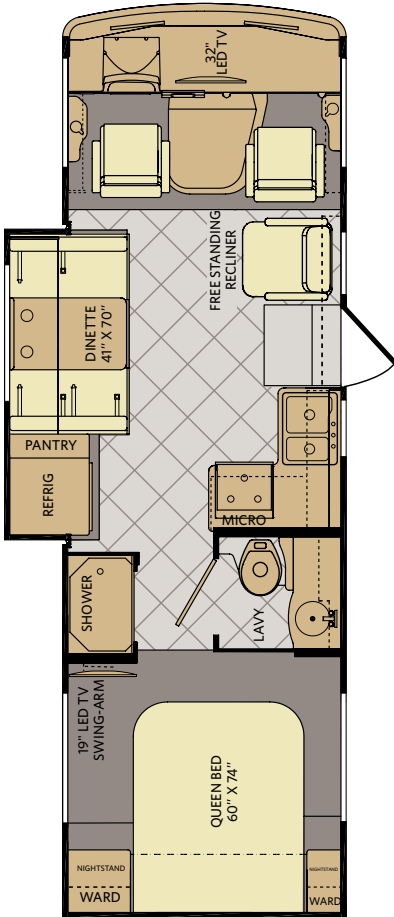


FLAIR 29T SHOWN IN SANGRIA DÉCOR WITH BARCELONA WOOD CABINETRY



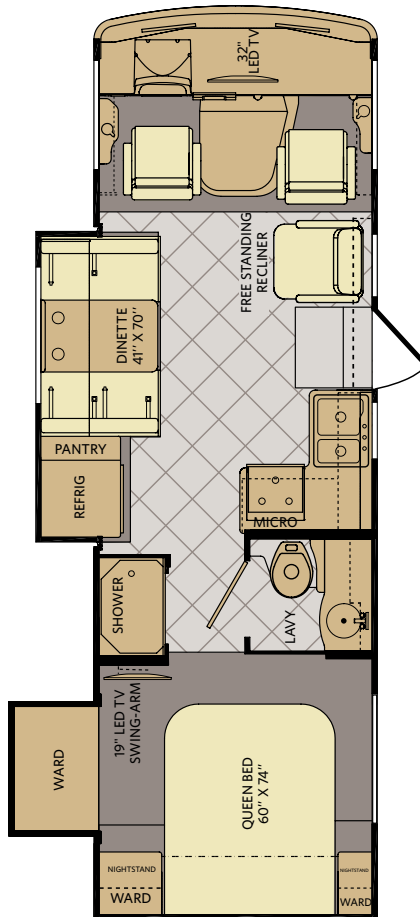
Go to FleetwoodRV.com and build your own Flair.

26D



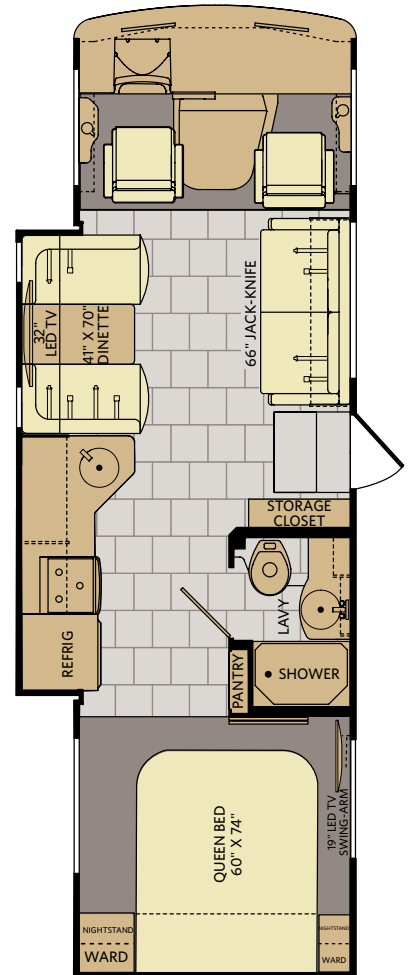
AVAILABLE OPTIONS: 218

26E



AVAILABLE OPTIONS: 218

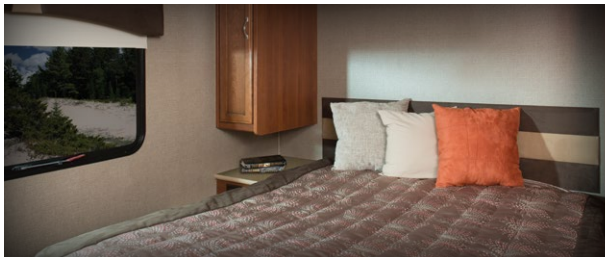
29T



AVAILABLE OPTIONS: 217

OPTIONS

OPT. 217  
HIDE-A-LOFT DROP  
DOWN QUEEN BED  
60" X 80"



OPT. 218  
HIDE-A-LOFT  
DROP DOWN  
QUEEN BED  
60" X 80"  
W/ 28" LED TV



#Flair4Le\$\$

# FLAIR



CLIFFSIDE COVE



MIDTOWN MINK



SANGRIA

## CHASSIS

MODELS	26D	26E	29T
Wheelbase (inches)	158"	158"	178"
GVWR (lbs) <sup>1</sup>	16,000	16,000	16,000
Front GAWR (lbs) <sup>2</sup>	6,500	6,500	6,500
Rear GAWR (lbs) <sup>2</sup>	11,000	11,000	11,000
GCWR (lbs) <sup>3</sup>	21,000	21,000	21,000
Hitch Rating Weight (lbs) <sup>5,††</sup>	5,000	5,000	5,000
Tongue Weight (lbs) <sup>†</sup>	500	500	500
Fuel Capacity (gal)	80	80	80

## FORD® CHASSIS

<b>Model:</b> Ford®	<b>Alternator:</b> 175 Amp
<b>Engine:</b> 6.8L Triton V10	<b>Torque:</b> 457 lb-ft @ 3,250 RPM
<b>Transmission:</b> Ford®, 5-Speed, Automatic w/Overdrive	<b>Horsepower:</b> 362HP

## DIMENSIONS & CAPACITIES

MODELS	26D	26E	29T
Overall Length <sup>4</sup>	27' 10"	27' 10"	29' 10"
Overall Height (with A/C)	12'	12'	12'
Overall Width (maximum) <sup>5, 6</sup>	102"	102"	102"
Interior Height (maximum)	82"	82"	82"
Interior Width (maximum)	96"	96"	96"
Patio Awning Width	18'	18'	20'
Interior Storage Capacity CU. FT.	120	140	125
Exterior Storage Capacity CU. FT.	85	85	135
Fresh Water Holding Tank (gal)	50	50	50
Grey Water Holding Tank (gal)	35	35	35
Black Water Holding Tank (gal)	35	35	35
Appliance Propane Tank (gal) (WC) <sup>7</sup>	14	14	14
Water Heater Tank (gal)	6	6	6

All the 😊 without the 💰 #Flair4Le\$\$



### Addendums

- GVWR (Gross Vehicle Weight Rating) is the maximum permissible weight of this fully loaded motorhome. The GVWR is equal to or greater than the sum of the (UVW) unloaded vehicle weight plus the (OCCC) occupant cargo-carrying capacity\*.
  - GAWR (Gross Axle Weight Rating) is the maximum permissible loaded weight a specific axle is designed to carry.
  - GCWR (Gross Combined Weight Rating) is the value specified by the motorhome manufacturer as the maximum allowable loaded weight of this motorhome with its towed vehicle. Towing and braking capacities may be different. Refer to Fleetwood and chassis manufacturer's manuals for complete information.
  - Length measured from front bumper to rear bumper (excludes accessories).
  - Excludes safety equipment and awnings.
  - Motorhomes feature a body width over 96" which will restrict your access to certain roads. Before purchasing, you should research any state and/or province road laws which may affect your usage.
  - Tank manufacturer's listed water capacity (WC). Actual propane capacity is 80% of water listing as required by the safety code.
- \* UVW and OCCC are found on the label containing the federal certification tag in each RV.
- † The chassis manufacturer recommends the installation of a supplemental brake control system to activate the brakes on the vehicle or trailer you are towing. Hitch receiver ratings expressed are maximum for the hitch receiver installed and may require the purchase of additional equipment that is dependent on the weight of the towed load. Consult with hitch receiver manufacturer for further information.

†† The Minimum Towable Load of this vehicle is the available weight capacity, up to GCWR, when the coach is fully loaded to maximum GVWR. However, if the coach is loaded to something less than maximum GVWR, that extra available weight capacity can be added to your Towable Load. For example, if your coach is loaded to 1000lbs less than maximum GVWR, your Towable Load increases accordingly. Do not exceed the hitch rating weight, GVWR or GCWR.

### IMPORTANT—PLEASE READ

Product information, photography and illustrations included in this publication were as accurate as possible at the time of printing. For further product information and changes, please visit our website at [www.fleetwoodrv.com](http://www.fleetwoodrv.com) or contact your local Fleetwood RV dealer. Prices, materials, design and specifications are subject to change without notice. All weights, fuel, liquid capacities and dimensions are approximate. Fleetwood RV has designed its recreational vehicles to provide a variety of uses for customers. Each vehicle features optimal seating, sleeping, storage and fluid capacities. The user is responsible for selecting the proper combination of loads (i.e., occupants, equipment, fluids, cargo, etc.) to ensure that the vehicle's capacities are not exceeded.

### CONTACT US

To locate a dealer near you, visit our website at [www.fleetwoodrv.com](http://www.fleetwoodrv.com) or call 1-800-322-8216. We can also be contacted at Fleetwood RV Customer Relations, P.O. Box 1007, Decatur, IN 46733.

\*\* All 2016 Fleetwood RV motorhomes include a 1-year emergency roadside assistance membership. For complete info, see your Fleetwood RV dealer.

©2015 Allied Recreation Group Inc. Printed in USA.  
Inventory Control Number FL16B1, 05/15. Model Year 2016, First Edition.

2016  
Class A Gas

