

Adventurer

WINNEBAGO[®]



Why Adventurer?

- Corian® countertops and mosaic tile backplash
- Powered king bed (37F, 38Q)
- Infotainment Center with Rand McNally RV GPS and dual touchscreen monitors
- Blu-ray™ Home Theater Sound System
- TrueAir® maximum comfort air conditioning
- Powered patio awning with LED lighting
- Motoraid supplemental hot water and heating system
- Available 100-watt solar panel/battery charger



On the Cover: 38Q Sandstone Full-Body Paint

38Q Mirage with Glazed Java Cabinetry

The Top of its Class

Who says you can't get the comfort and quality of a diesel-pusher in the convenience and affordability of a Class A gas coach? The Winnebago Adventurer® begs to differ. Each of its four floorplans is loaded with upscale amenities such as Ultraleather™ cab seats, Corian® galley and bath countertops,

MCD solar/blackout roller shades, and an elegant glazed finish on the woodwork. The exterior gets the royal treatment with six new full-body color schemes and stylized aluminum wheels. Hit the road in a Winnebago Adventurer and enjoy the best of what a Class A gas coach has to offer.



Recognized Quality

The Recreation Vehicle Dealer Association annually rates RV manufacturers and awards the Quality Circle Award to manufacturers that provide exceptional products, service and support. Winnebago Industries is proud to be the only manufacturer that has received this award every year since its inception.



38Q Mirage with Glazed Java Cabinetry

Whether your floorplan includes the inLounge™, the extendable sectional sofa, or the Rest Easy® sofa, you will have plenty of room to stretch out and enjoy the large HDTV and the Blu-ray™ Home Theater Sound System. MCD solar/blackout roller shades look great and give you total control of the sunlight and privacy. Even the hottest afternoons are no match for the TrueAir® maximum comfort air conditioning. It's powered by a 5,500-watt Cummins Onan® Marquis Gold™ generator with the Energy Command™ automatic generator start system so you don't have to worry about blown fuses or lost power.



MCD Blackout Roller Shades



Euro Recliner





38Q Glide & Dine Dining Table with 4 Chairs



38Q Glide & Dine as Desk



38Q Glide & Dine Dining Table



38Q Rest Easy Extendable Sectional Sofa with Available Ottomans



38Q Entertainment Center



38Q TV Storage



38Q Rest Easy Extendable Sectional Sofa as Bed



38Q Rest Easy Extendable Sectional Sofa

The galley welcomes you with high-gloss Corian® solid-surface countertops, matching sink and range covers, and a decorative backsplash. The microwave/convection oven saves space without limiting your cooking options. Top it off with a stunning French door refrigerator/freezer in the 38Q (available 37F) and you have a galley that is truly its own showpiece.



38Q Galley



Full-Extension Drawer Slides



3-Burner Range with Available Oven



Microwave/Convection Oven



38Q Residential Refrigerator/Freezer



38Q Pantry

Once you've slept in a king bed, you will never want to go back, which is why we've made it standard in every floorplan. We've taken it a step further in the 37F and 38Q by including a powered king bed with an Ideal Rest® Natural Reserve digital comfort control mattress (available in the 32D and 35P). Select the 37F for a private master bath and the Winnebago-exclusive BIG Shower.



38Q Bedroom



38Q Available Washer/Dryer



38Q Bedroom HDTV



38Q Bath Vanity



38Q Wardrobe



38Q Bathroom Storage



Dash

The re-designed dash is highlighted by the Infotainment Center with Rand McNally RV GPS. Its 10.4" touch screen lets you easily navigate through features such as CD/DVD player, SiriusXM[™] satellite radio (subscription not included), iPad[®]/iPhone[®] connectivity, Bluetooth[™] for hands free calling and audio streaming, and more. Enjoy the ride or your time at the campground in swivel Ultraleather cab seats. A dash workstation even turns the cab into a mobile office.



Infotainment Center with Rand McNally RV GPS



Infotainment Center Co-Pilot Monitor



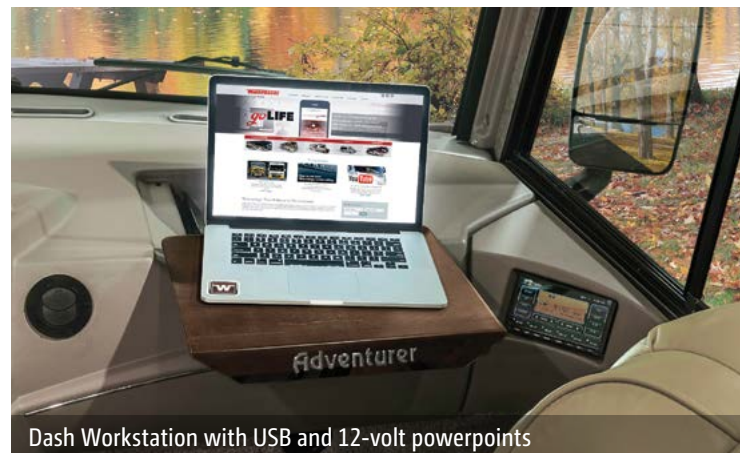
Cab Seats



Cab Seat Reclined



Powered MCD Solar/Blackout Front Shade



Dash Workstation with USB and 12-volt powerpoints



Powered Mirrors with Defrost

Want to be the center of attention? The Adventurer sports six new full-body color schemes and stylized aluminum wheels that are sure to get noticed. Hydraulic leveling jacks have controls in three different locations so you can level the coach at your convenience. A powered patio awning with LED lighting and an available exterior entertainment center with an HDTV make your time outdoors even more enjoyable.



38Q Powered Patio Awning



Automatic Entrance Steps



Exterior Service Center



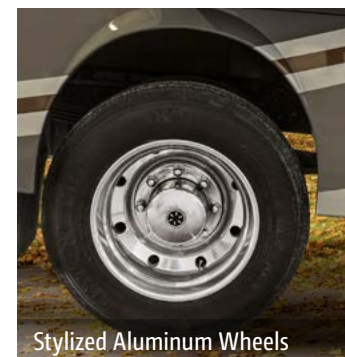
Exterior Storage Compartments



38Q Available Exterior Entertainment Center



Awning with LED Lighting



Stylized Aluminum Wheels

Fiberglass Roof

The crowned, one-piece fiberglass roof is backed by a 10-year limited parts-and-labor roof skin warranty.

Thermo-Panel® Sidewalls By layering fiberglass and high-density block foam insulation with welded aluminum support structures, we create some of the industry's strongest, most durable and lightweight sidewalls.

E-Coating An electrodeposition coating helps protect critical steel components.

Solid Framework Aluminum extruded in our own facility to our exacting standards creates an extremely strong and solid structural framework.

Laser-Cut Tubing

Precision laser cutters create precise joints in structural steel that are stronger and require less welding.



Interlocking Joints

Specially engineered interlocking joints connect the floor, sidewalls and roof where competitors often rely on simple screws to bear the weight.



Embedded Steel Metal substructures embedded into the sidewall provide solid attachment points to keep cabinets and appliances mounted securely in place.

**SUPER
STRUCTURE**
BUILT TO LAST

Every coach—from our smallest Class C to our largest diesel-pusher model—is built to Winnebago's® legendary SuperStructure® construction standards. It's a process developed and refined over more than 50 years of building some of the strongest, most durable coaches in the industry.

TESTING

Before rolling out of our factories, every coach undergoes an extensive 113-point inspection. Each coach also passes a high-pressure water test that simulates rain at a rate of 50-inches per hour to check for leaks. During the design process, our computer simulations, physical testing center, and rigorous test track ensure each model is built to last.



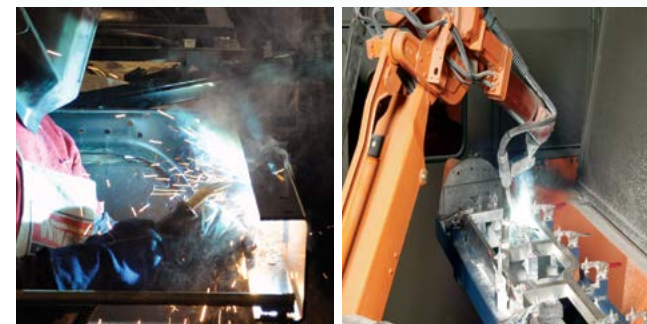
DETAILS

At Winnebago, we treat the features you can't see with the same care as the ones you can. Look in the access panels of some of our competitors' coaches and you'll see loose insulation and wires haphazardly strewn about. Winnebago maintains a clean fit and finish throughout so your coach will last for the long haul.



BUILT IN-HOUSE

We extrude our own aluminum. We rotocast our own plastic components. In fact, we manufacture most of our own parts so they are designed to fit the space, rather than fitting the space to an awkward off-the-shelf component size.



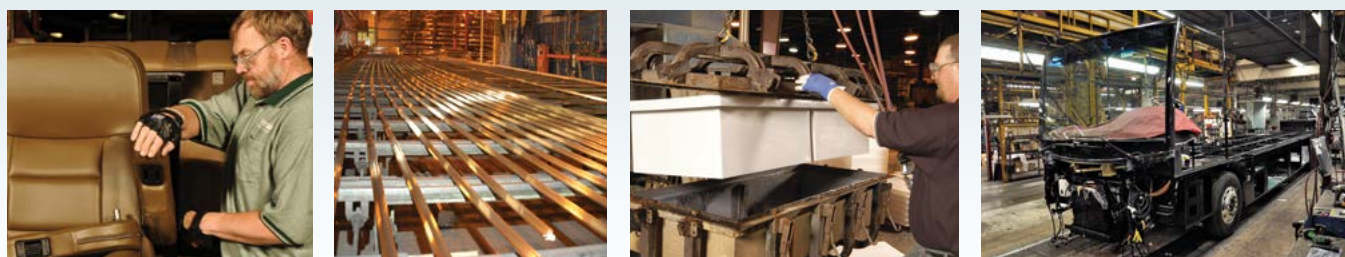
**SUPER
STRUCTURE**
BUILT TO LAST

Visit BetterBuiltRVs.com to gain real insight into what goes into a Winnebago motorhome.

TAKE A TOUR

We're proud of our processes, state-of-the-art facilities, and the people who make Winnebago number one. We invite you to visit our complex in Forest City, Iowa, for a firsthand look at the dedication and technology behind every motorhome we build.

Call (641) 585-6936 or (800) 643-4892 or visit us online at WinnebagoInd.com/company/visit for more information.

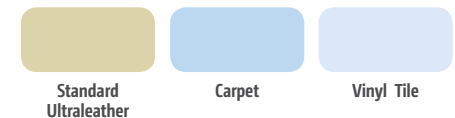




Click here to explore this floorplan's web page.

32D

This one-of-a-kind floorplan features an inLounge™ with the movable inTable™. Extra amenities you will enjoy include a fireplace, an available washer and dryer, and your choice of a king or queen bed.

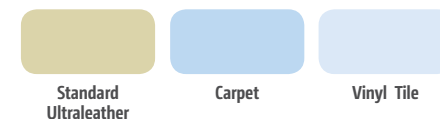
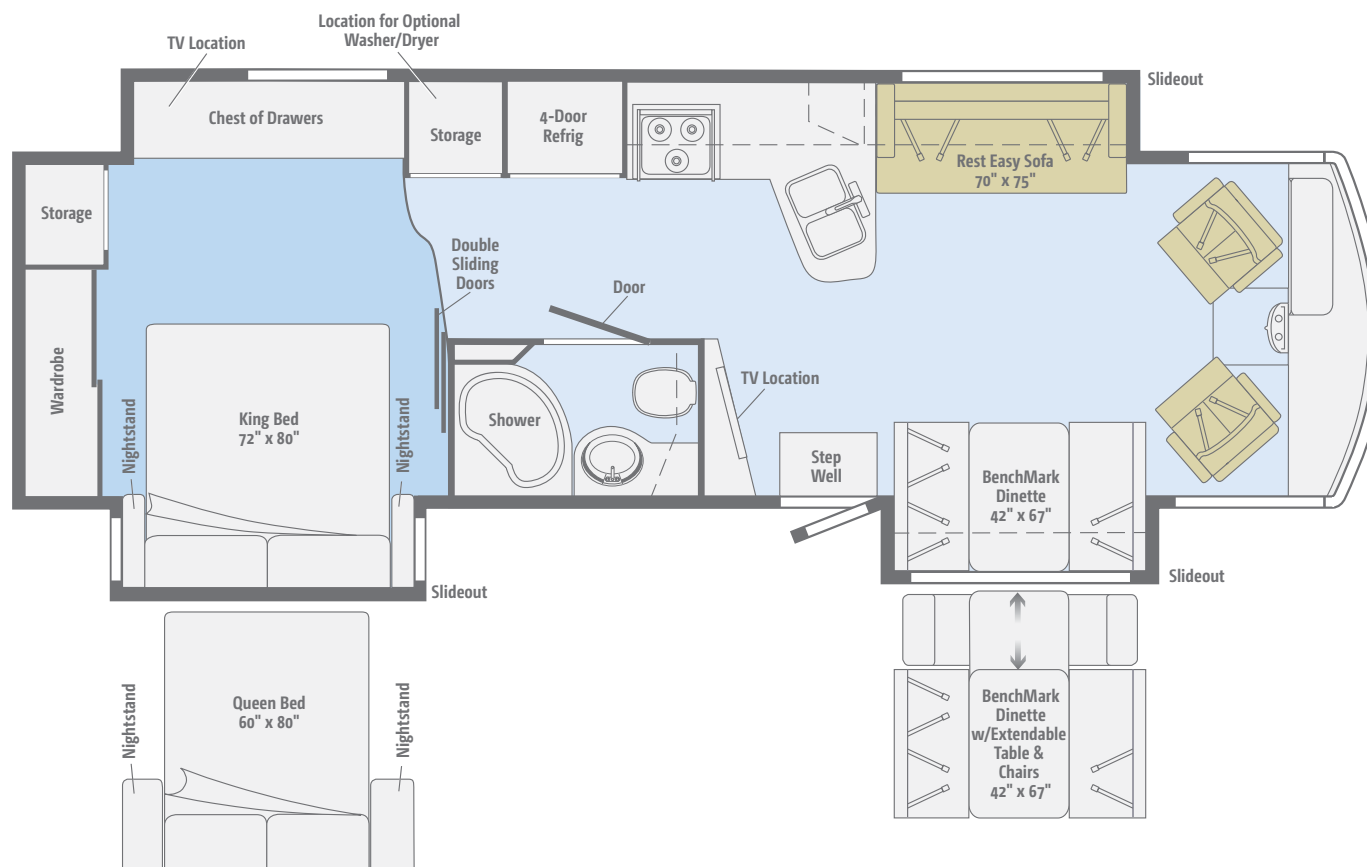




Click here to explore this floorplan's web page.

35P

The full-wall slide makes way for popular space-saving features such as an Ultraleather™ Rest Easy® sofa and BenchMark® dinette. The abundant storage space includes a large wardrobe and chest of drawers beside the king bed.

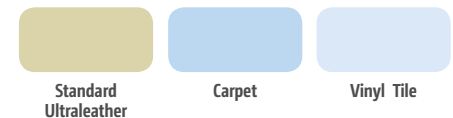
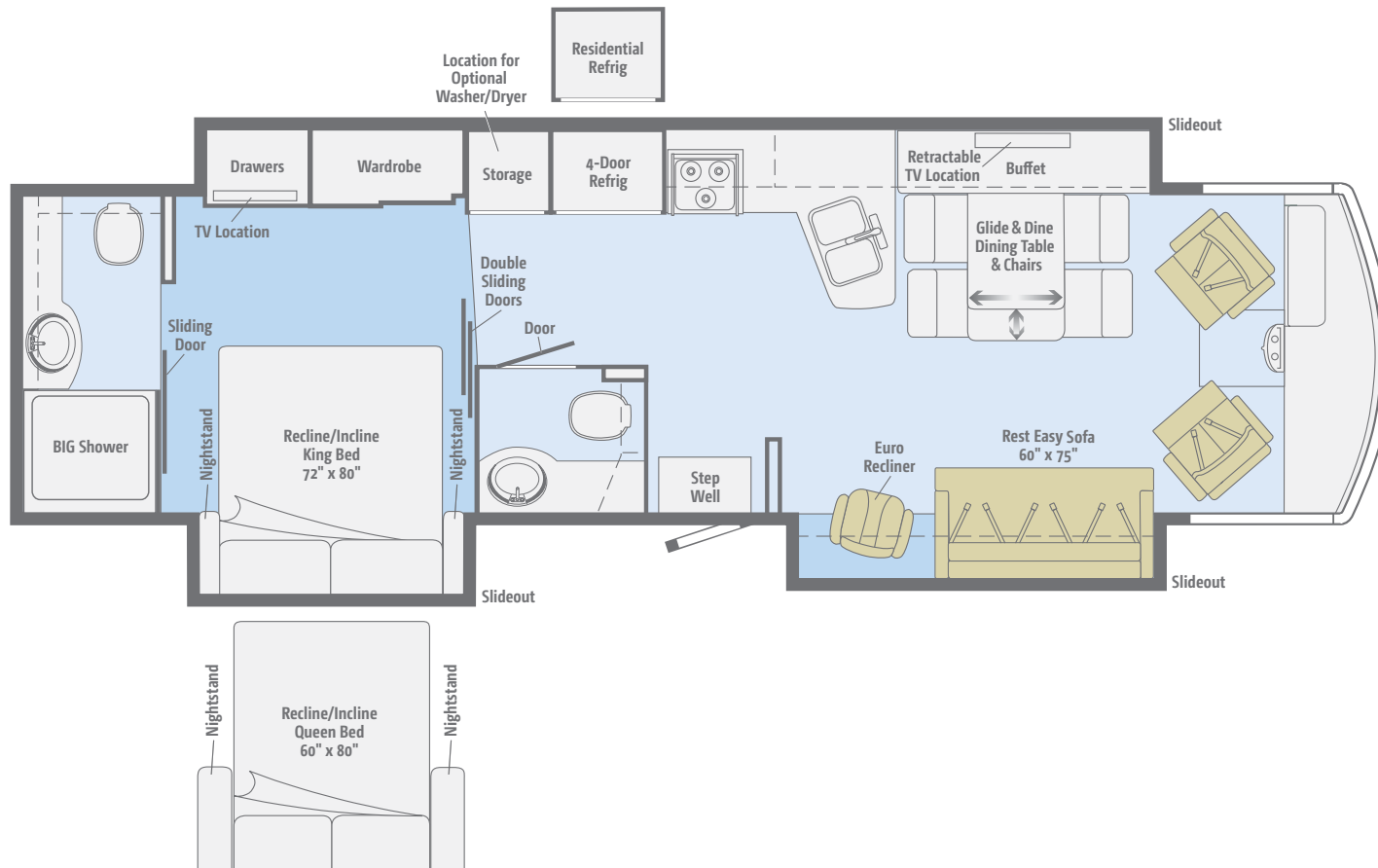




Click here to explore this floorplan's web page.

37F

The Rest Easy sofa, Euro recliner, and swivel cab seats are wrapped in soft Ultraleather. This floorplan offers one of our largest bedrooms, which is adjacent to a private master bath featuring our coveted BIG Shower.

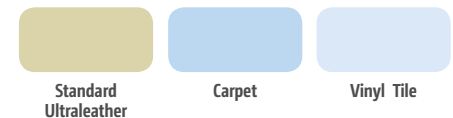




Click here to explore this floorplan's web page.

38Q

Relax in the ultimate lounge featuring a Rest Easy extendable sectional sofa, Euro recliner, large HDTV, and a fireplace. The Glide & Dine dining table and a powered king bed round out this impressive triple-slideout floorplan.



Choose from three fabric collections and four wood finishes.

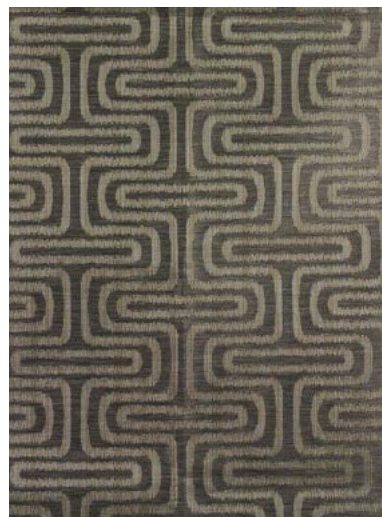
Splendor



Ultraleather



Feature Fabric



Bedsread



Corian Countertop
(Galley)



Vinyl Tile



Coffee-Glazed
Vienna Maple



Coffee-Glazed
Honey Cherry



Glazed Java



Glazed Driftwood

Winnebago® reserves the right to change décor materials and specifications without notice or obligation.

Choose from three fabric collections and four wood finishes.

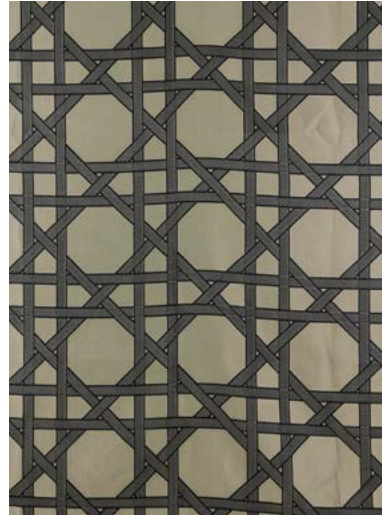
Jet Stream



Ultraleather



Feature Fabric



Bedspread



Corian Countertop
(Galley)



Vinyl Tile



Coffee-Glazed
Vienna Maple



Coffee-Glazed
Honey Cherry



Glazed Java



Glazed Driftwood

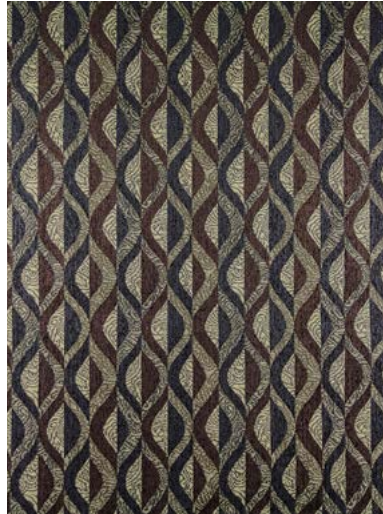
Winnebago® reserves the right to change décor materials and specifications without notice or obligation.

Choose from three fabric collections and four wood finishes.

Mirage



Ultraleather



Feature Fabric



Bedspread



Corian Countertop
(Galley)



Vinyl Tile



Coffee-Glazed
Vienna Maple



Coffee-Glazed
Honey Cherry



Glazed Java



Glazed Driftwood

Winnebago® reserves the right to change décor materials and specifications without notice or obligation.

Full-body paint comes standard in the style of your choice.



Amber
FULL-BODY PAINT



Pewter Pearl
FULL-BODY PAINT



Sandstone
FULL-BODY PAINT

Full-body paint comes standard in the style of your choice.



Sapphire
FULL-BODY PAINT



Titanium
FULL-BODY PAINT



Black Walnut
FULL-BODY PAINT

Weights & Measures	32D	35P	37F	38Q
Length	34'1"	35'6"	37'6"	38'8"
Exterior Height ¹	12'5"	12'5" ^A /12'6" ^B	12'6"	12'6"
Exterior Width ²	8'5.5"	8'5.5"	8'5.5"	8'5.5"
Exterior Storage ³ (cu. ft.)	103.3	125.5	121.7	121.9
Awning Length	18'	17'	18'	14'
Interior Height	7'	7'	7'	7'
Interior Width	8'0.5"	8'0.5"	8'0.5"	8'0.5"
Freshwater Tank Capacity ⁴ (gal.)	58	78	78	63
Water Heater Capacity (gal.)	10	10	10	10
Optional Water Heater Capacity (gal.)	Continuous	Continuous	Continuous	Continuous
Holding Tank Capacity - Black/Gray ⁴ (gal.)	56/40	43/57	52/71	75/79
LP Capacity ⁵ (gal.)	23	28	28	28
Fuel Capacity (gal.)	80	80	80	80
GCWR ⁶ (lbs.)	26,000 ^A	26,000 ^A /30,000 ^B	30,000 ^B	30,000 ^C
GVWR (lbs.)	22,000 ^A	22,000 ^A /24,000 ^B	24,000 ^B	26,000 ^C
GAWR - Front (lbs.)	8,000 ^A	8,000 ^A /9,000 ^B	9,000 ^B	9,000 ^C
GAWR - Rear (lbs.)	15,000 ^A	15,000 ^A /15,500 ^B	15,500 ^B	17,500 ^C
Wheelbase	228"	228"	248"	248"
Seating Capacity	5	7	5	4

A Ford F53 22,000-lb. Chassis w/22.5" tires

B Ford F53 24,000-lb. Chassis w/22.5" tires

C Ford F53 26,000-lb. Chassis w/22.5" tires

Ford® F53 Chassis

22,000-lb. Chassis 6.8L V10 SEFI Triton® engine, TorqShift™ 6-speed automatic overdrive transmission w/tow/haul, Hydro-Max brakes w/4-wheel ABS, 175-amp. alternator (32D, 35P)

24,000-lb. Chassis (37F)

26,000-lb. Chassis (38Q)

7-pin trailer wiring

Trailer Hitch® 5,000-lb. drawbar/500-lb. maximum vertical tongue weight

Stylized aluminum wheels

Hydraulic leveling jacks w/3-position controls

OPTIONAL EQUIPMENT

24,000-lb. Chassis (35P)

Cab Conveniences

Infotainment Center with Rand McNally RV GPS 10.4" touch screen color monitor w/split screen function, 2nd monitor, Rand McNally RV GPS safe & easy routing, amenities & tools, trips & content, turn-by-turn voice guidance, AM/FM radio w/CD/DVD player, handheld remote, SiriusXM™ (subscription not included), compass, outside temperature, iPod/iPhone® audio integration, Bluetooth™, color rearview camera

Chassis/house battery radio power switch

Cab seats adjustable armrests, fixed lumbar support, multi-adjustable slide/recline/swivel

6-way power driver seat

3-point seat belts

Defroster fans

Passenger-side curb view window

Cruise control

12-volt powerpoints

Map lights

Power steering w/tilt wheel

Dash workstation

Power mirrors w/defrost and sideview cameras

MCD solar/blackout powered front shade

Privacy curtain driver and passenger windows

Solar shades driver and passenger windows

Convenience tray (engine cover)

OPTIONAL EQUIPMENT

Passenger seat w/footrest

Interior

Dining table/buffet/chairs w/retractable 48" HDTV (37F)

Entertainment center w/40" HDTV (32D)

Entertainment center w/48" HDTV (35P, 38Q)

Amplified digital HDTV antenna system

Blu-Ray™ Home Theater Sound System amplifier, CD/DVD player, iPhone®/iPod dock w/video, receiver, 5 speakers, and subwoofer

OnePlace® systems center

Satellite system ready (lounge and bedroom)

MCD solar/blackout roller shades (in select areas)

Contour™ windows frameless, dual-paned

LED ceiling and accent lighting

Soft vinyl ceilings

HDMI Matrix central video selection system

Powered ventilator fan (galley)

Powered roof vent(s) (bath)

Washer/dryer prep

Electric fireplace (32D, 38Q)

OPTIONAL EQUIPMENT

Winegard® Mission® in-motion TV antenna system

Winegard Trav'ler® automatic HDTV antenna system

Stackable washer/dryer

Galley

Corian® solid-surface high-gloss countertop, flip-up extension (NA 32D), and decorative backsplash

Microwave/convection oven w/range fan w/touch control

3-burner range top w/storage below

Corian sink and range covers

2-door residential refrigerator/freezer w/icemaker (32D)

4-door 2-way refrigerator/freezer w/icemaker (35P, 37F)

French door residential refrigerator, counter-depth, stainless steel, interior water dispenser, icemaker, and glide-out bottom drawer freezer (38Q)

Cold water filtration system

OPTIONAL EQUIPMENT

French door residential refrigerator, counter-depth, stainless steel, interior water dispenser, icemaker, and glide-out bottom drawer freezer (37F) (includes 4 AGM batteries)

3-burner range w/oven

4-door 2-way refrigerator/freezer w/icemaker (32D) (includes 2 Group 31 batteries)

Bath

Textured glass shower door

Flexible showerhead

Corian countertop w/decorative backsplash

Skylight (32D, 35P)

Water pump switch(es)

Porcelain toilet w/foot pedal and sprayer

Electric toilet (37F rear bath)

Bedroom

Powered king bed w/Ideal Rest® Natural Reserve digital comfort control mattress w/remotes (37F, 38Q)

King bed w/innerspring mattress (32D, 35P) (storage below on 35P)

28" HDTV (37F)

32" HDTV (32D, 35P, 38Q)

Bedsread, pillow shams, and pillows

Ceiling fan

Headboard

OPTIONAL EQUIPMENT

King Ideal Rest Natural Reserve digital comfort control mattress w/remotes (32D, 35P)

Queen Ideal Rest Natural Reserve digital comfort control mattress w/remotes (32D, 35P)

Queen bed w/innerspring mattress (32D, 35P) (storage below on 35P)

Powered queen bed w/Ideal Rest Natural Reserve digital comfort control mattress w/remotes (37F, 38Q)

Vinyl tile throughout (slideouts carpeted)

Exterior

Driver's side service light

TriMark® KeyOne™ lock system

Lower front protective mask

Porch light w/interior switch

Automatic entrance steps

Powered entrance awning (38Q)

Powered patio awning w/LED lighting and metal wrap

Ladder

Front and rear mud flaps

Lighted storage compartments (in select compartments)

OPTIONAL EQUIPMENT

Exterior Entertainment Center 32" HDTV

Heating & Cooling System

35,000 BTU low-profile furnace (32D)

40,000 BTU low-profile 2-speed furnace (35P, 37F, 38Q)

TrueAir® Maximum Comfort A/C 2-13,500 BTU, low-profile air conditioners w/heat pumps

Electrical System

AC/DC distribution system

45-amp. converter/charger (35P)

Service Center cable TV input, 50-amp. power cord, QuickPort® service connection hatch, portable satellite dish hookup

Cummins Onan® Energy Command™ automatic generator start system

Exterior AC duplex receptacle

5,500-watt Cummins Onan Marquis Gold™ generator

1,000-watt inverter (35P)

2,000-watt inverter/charger (NA 35P)

PowerLine® Energy Management System

Auxiliary start circuit

2 deep-cycle Marine/RV Group 31 batteries (35P, 37F)

4 deep-cycle Marine/RV sealed AGM batteries (32D, 38Q)

Battery disconnect systems (coach and chassis)

Automatic dual-battery charge control

Generator/shoreline automatic changeover switch

Exterior antenna jack

OPTIONAL EQUIPMENT

100-watt solar panel/battery charger

Plumbing System

LPG accessory connection (patio area)

Service Center QuickPort service connection hatch, exterior wash station w/pump switch, pressurized city water hookup w/diverter valve, drainage valves, 10' sewer hose

Black tank flushing system

Permanent-mount LP tank w/gauge

TrueLevel™ holding tank monitoring system

On-demand water pump

Heated holding tank compartment

Winterization Package water heater bypass valve and siphon tube

10-gallon water heater, 110-volt/LP w/motoraid auxiliary hot water supply system and auxiliary auto heater

Gravity water tank fill w/lockable door

OPTIONAL EQUIPMENT

Tankless water heater

Safety

Child seat tether anchor (dinette) (35P)

LP, smoke, and carbon monoxide detectors

10 BC fire extinguisher

Ground fault interrupter

Fog lamps

High-mount brake lamps

Warranty⁷

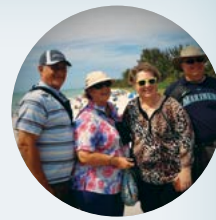
12-month/15,000-mile basic limited warranty⁸

36-month/36,000-mile limited warranty on structure⁸

10-year limited parts-and-labor warranty on roof skin⁸

FOOTNOTES

1. The height of each model is measured to the top of the tallest standard feature and is based on the curb weight of a typically equipped unit. The actual height of your vehicle may vary by several inches depending on chassis or equipment variations. Please contact your dealer for further information.
2. Floorplans feature a wide-body design - over 96" In making your purchase decision, you should be aware that some states restrict access on some or all state roads to 96" in body width. Before making your purchase decision, you should confirm the road usage laws in the states of interest to you.
3. The load capacity of your motorhome is designated by weight, not by volume, so you cannot necessarily use all available space when loading your motorhome. Measurements are based on the most recent information available. See your dealer for specifications.
4. Capacities are based on measurements prior to tank installation. Slight capacity variations can result due to installation applications.
5. Capacities shown are tank manufacturer's listed water capacity (W.C.). Actual filled LP capacity is 80% of listing due to overfilling prevention device on tank.
6. Actual towing capacity is dependent on your particular loading and towing circumstances which includes the GVWR, GAWR, and GCWR as well as adequate trailer brakes. Please refer to the Operator's Manual of your vehicle for further towing information.
7. See separate chassis warranty.
8. See your dealer for complete warranty information.



Let us host
your next *Adventure*



WGOAdventures.com

Connect with Winnebago (Click one of the following)



Like us



Follow us



Watch now



Show your Winnebago love
with high-quality gifts and wearables.



Apparel | Gifts | Parts | Gear

WinnebagoOutdoor.com

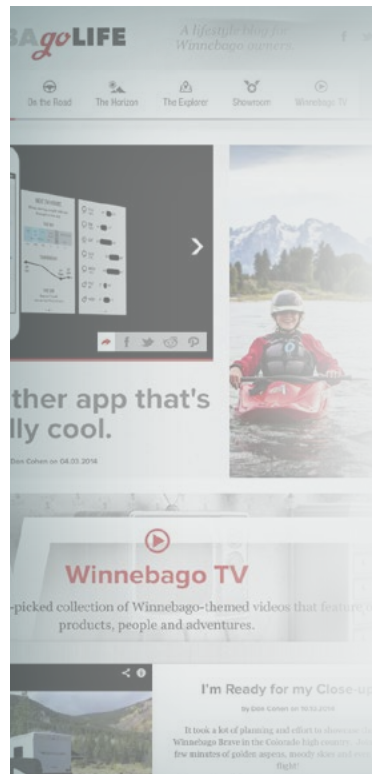
Find your style



WINNEBAGO
OUTDOOR

WinnebagoInd.com Has All The Answers

Visit WinnebagoInd.com on your computer, smartphone, or tablet for the latest product information and updates.



Welcome to GoLife!

Visit our lifestyle blog
for motorhome news,
personal travelogues,
and community stories.

WinnebagoLife.com

*go***LIFE**

PREFERRED CARE PROGRAM

We back our motorhomes with best-in-class support both before and after the sale:

- 12-month/15,000-mile basic limited warranty
- 36-month/36,000-mile limited warranty on structure
- 10-year limited parts-and-labor warranty on fiberglass roof
- Complimentary 24-hour roadside assistance program



- TripSaver® Fast Track Parts guarantees that in-stock warranty parts ship directly to your dealer within 24 hours
- National dealer service network



For more information, visit us
WGOService.com



From RV to personal insurance, Winnebago RV Insurance can provide all the coverage and services you need to feel at home on the road.

For more information:
(800) 642-4892



CONTACT US

GENERAL INQUIRIES

Corporate Switchboard
(641) 585-3535

CURRENT PRODUCT OWNER AND SERVICE-RELATED INQUIRIES

(800) 537-1885
or @winnebagoind.com

NEW VEHICLE SALES INQUIRIES

sales@winnebagoind.com

FAX

(641) 585-6966

POSTAL ADDRESS

Winnebago, Inc.
P.O. Box 152
Forest City, IA 50436

STREET ADDRESS

Winnebago, Inc.
605 West Crystal Lake Road
Forest City, IA 50436



Join the Club, Join the Fun

Here's the perfect way to begin your life on the road as the owner of a new Winnebago – by joining the exclusive WIT Club. Start your adventure with other fun-loving WIT Club members from across the country and get the most out of your new Winnebago motorhome.



Members enjoy:

- Caravans and rallies
- Newsletters
- Local and state group activities
- RV travel benefits

See more at
WITClub.com



Grand National Rally

Each year, thousands of Winnebago owners descend upon Forest City, Iowa. Rally-goers enjoy an unforgettable week reconnecting with friends, taking tours, participating in activities, and more. Join the adventure next July!