

SIERRA

SELECT SERIES FIFTH WHEELS

SIERRA



SELECT SERIES FIFTH WHEELS



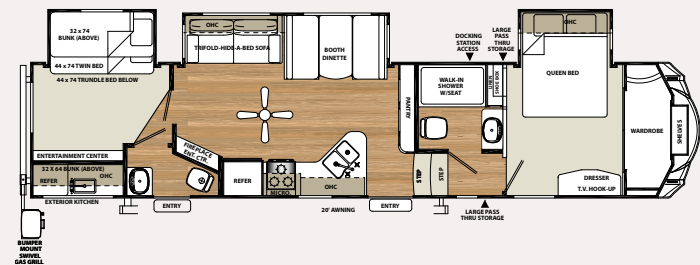




357TRIP



MERLOT INTERIOR



Take a look at this intelligently designed Sierra Select 357TRIP. This triple slide bunk model is perfect for the larger family or the camper looking for some extra storage space. This model comes standard with three oversized bunks in the rear bunk room, tri-fold hide a bed sofa and booth dinette. This versatile floorplan can also be changed to have a full party couch in main slide and hide a bed with flip down bunk above in the back bunk room. The endless storage, floor to ceiling pantry and a full walk in shower make this fifth wheel a prime choice.

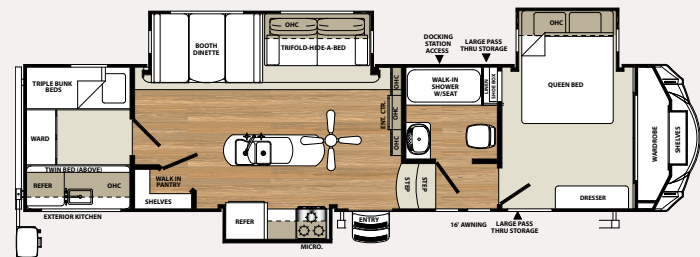




30IOK



PEBBLE INTERIOR



Sierra's 30IOK is a fantastic bunk house fifth wheel for the family. This model contains a huge island with a flush floor kitchen slide out. This bunk house boasts a great entertainment center and a full "walk in" pantry to store all your camping essentials. In the rear of the camper there are four bunks with plenty of clothes storage. Don't forget to walk around the outside to see how the standard outside kitchen with swing around grill that would appeal to any outdoor cooking enthusiast.



Contemporary high rise faucet with Stonecast sink and solid surface sink covers.



The upgraded and intricately detailed slide-out fascia.



Optional theater seats in place of recliners.



Full extension, soft close ball bearing drawer guides.



The electric fireplace is a great focal point for the living area.



SIERRA's control center allows you to monitor tanks and other systems quickly and easily.



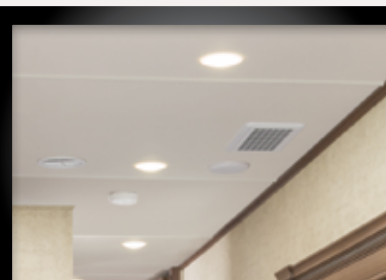
Serta™ Memory Foam mattress is a Forest River exclusive feature.



Flatscreen LED HDTV with premium soundbar and DVD player.

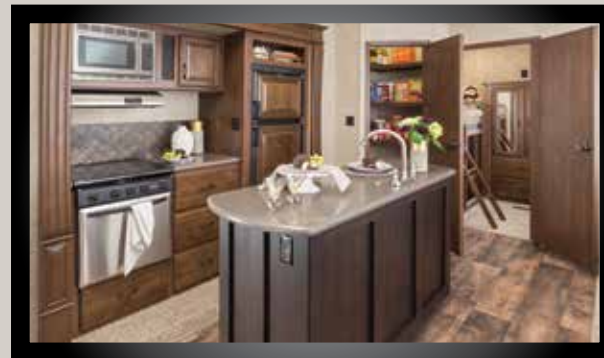


Contemporary ceiling fan.



LED interior lighting. Our LED lights are 40% more efficient than incandescent lights.

ISLAND KITCHEN



THE SIERRA ISLAND KITCHEN PROVIDES YOU WITH AN ABUNDANCE OF COUNTERTOP SPACE. (PER FLOORPLAN)

SIERRA SELECT EXTERIOR FEATURES



The color matched fiberglass front cap features high definition graphics and LED safety lights.



Gel coated fiberglass protects from UV rays and prevents yellowing and cracking.



Large pass-thru storage area with Slam Lock baggage doors allows for extra storage underneath.



Optional quadruple entry steps for safer and easier entry and exit.



2 quick connect spray ports (one on each side) are great for easy clean up.



Optional wide stance hydraulic landing gear.



Contemporary aluminum rims with E-rated radial tires. Most SIERRA's feature 7000 Lb. axles.



Heated and enclosed underbelly protects your coach and improved airflow allows for a sturdier ride.



The outdoor kitchen is a great feature that allows you to cook a great meal or grab a cold drink while enjoying the great outdoors. (Select models. Outside kitchen setups vary per floorplan)



Drip rail with extra long drip spouts help prevent black streaking.



110v outlet and cable outlet conveniently located in the pass-thru storage area.

EXTERIOR FEATURES

- Color match high gloss gel coated colored exterior fiberglass
- Painted two tone aerodynamic fiberglass front cap with improved turning radius
- Enclosed and heated dump valves
- Large tinted windows with 80/20 UV prohibitor
- Hickory Springs® radius triple steps with 9" riser (no pinched fingers)
- "One Touch" Dometic® electric awning w/LED light strip
- Power front jacks with spring loaded snap pins
- 16" Radial tires-E Rated
- Automotive-style fender skirts
- Hitch light
- Exterior refrigerator (per floorplan)
- Porch light with interior switch
- 30 lb. double LP tanks with auto change over
- Roof ladder
- 2 exterior speakers
- Rain gutters with extra long drip spouts (prevents black streaking)
- Insulated heavy duty slam lock baggage doors
- Exterior foldable grab handle
- Unobstructed pass-through storage area with cable jacks and 110V outlet
- 2 spray ports with 25' hose (one on each side)
- Upgraded aluminum rims
- 6,000 Lb. axles
- Friction hinge entry door

INTERIOR FEATURES

- 84" interior height with 6'4" slide heights
- Stainless steel appliances
- Beauflor® rustic wood plank linoleum
- Decorative backsplash
- Four color coordinated interiors (Carbon, Merlot, Pebble, Beachwood)
- Soft close full extension drawer glides
- Stone cast under mounted kitchen sink
- Delight Maple handmade cabinetry with screwed lumber core stile construction
- LED lighting throughout
- Solid surface countertops in kitchen
- Recessed residential lighting
- Colored shower surround with etched tile pattern

- Upgraded adjustable shower head with shelf
- Accent paneling in slideouts
- Accent lighting over dinette
- Walk-in shower with seat (most models)
- Mocha accent crown molding over kitchen cabinets
- Extra large picture windows throughout
- Vented side windows in slideouts
- TV antenna with booster
- Solid wood drawer fronts with birch sides
- Upgraded raised panel cabinet doors with designer rails
- Bedroom slideout fascia
- Serta® memory foam mattress
- Teddy Bear® bunk mats
- 32" flat screen LED HD TV
- Premium soundbar with Sony® DVD player
- Designer window treatment accented per decor
- 9 cu. ft. refrigerator
- Ceiling fan
- Tri-fold hide-a-bed sofa
- Residential stain resistant carpet
- Center mounted A/C unit for even cooling
- Quilted bedspread
- Trash receptacle in kitchen

APPLIANCES/SYSTEMS

- Dual zone ducted High Performance Dometic® 15K A/C with Quiet Cool (second A/C prep)
- 9 cu. ft. refrigerator
- Dual zone thermostat for living room and bedroom A/C
- Floor ducted 35,000 BTU furnace
- OTR stainless steel microwave
- Three burner high output range with 22" oven
- Interior monitor panel for holding tanks
- Flush floor hydraulic slideouts (per floorplan)
- Dual battery prep
- Satellite and cable hookup with RG-6 cable for high quality picture
- Porcelain foot flush toilets
- 65 Amp converter
- EZ Breeze® power fan in bathrooms

CONSTRUCTION

- Welded aluminum-framed, vacuum bonded laminated superstructure
- Laminated and fully insulated bathroom floor deck
- 2" x 3" floor joists 12" on center
- 5/8" tongue & groove plywood floor decking
- 3/8" roof decking (full walk-on roof)
- Cambered powder coated frame with rust prohibitor
- Fully enclosed heated underbelly
- 5" truss roof rafters
- R-10E sidewall construction
- Laminated sidewalls
- Laminated slideout walls

POPULAR OPTIONS

- Hydraulic front jacks
- Roto Flex hitch pin
- Electric rear jacks
- Tri-fold hide-a-bed with hinged bunk overhead (bunk slides)
- Recliners IPO theater seating (where available)
- Solid surface countertops in kitchen
- Free-standing dinette with 4 chairs
- Party Lounge w/footrest and Hide-A-Bed sofa
- Washer and dryer (per floorplan)
- Sofa IPO bottom bunk (per floorplan)
- 10 Gal. DSI water heater
- Second air conditioner-bedroom
- Fantastic fan with rain sensor (bunk room, kitchen, living room, bathroom, half bath)
- 12 Volt heated holding tanks
- Equaflex® equalizer system
- Beauflor® tile look linoleum
- Central vacuum
- R-38E insulation
- Quad entry steps

OPTIONAL POLAR TECH PACKAGE

- Thermal pane windows
- Heated holding tanks
- R-38E roof & all floors insulation
- 40K BTU furnace
- Double fiberglass insulation in roof & floor

FOR YOUR SAFETY

- Smoke alarm
- Fire extinguisher
- Breakaway switch (battery hook-up required)
- Dead-bolt lock on entry door
- LP/CO2 gas detector
- Fire escape windows

SIERRA SIGNATURE PACKAGE

- Aerodynamic two tone fiberglass painted front cap
- 9 cu. ft. stainless steel refrigerator
- Stainless appliance package
- Serta memory foam mattress
- OTR stainless steel microwave
- Decorative backsplash
- Soft close residential drawers
- Docking station
- High gloss color matched gelcoated fiberglass exterior
- 32" Flat screen LED HD TV
- Premium sound bar with Sony DVD player
- EZ Breeze® power fan in bathroom(s)
- Tri-fold hide-a-bed
- "One Touch" Dometic electric awning with LED light strip"
- LED interior lighting throughout
- Residential stain resistant carpet
- Slam lock baggage doors
- Quiet-cool air conditioner
- Wire and brace for 2nd A/C (ducted)
- Residential pullout kitchen faucet
- 10 Gal. G/E water heater w/DSI
- Aluminum wheels w/7,000 Lbs. axles
- Washer/dryer prep
- Water filter system
- "Rustic wood" look Beauflor flooring



CARBON INTERIOR



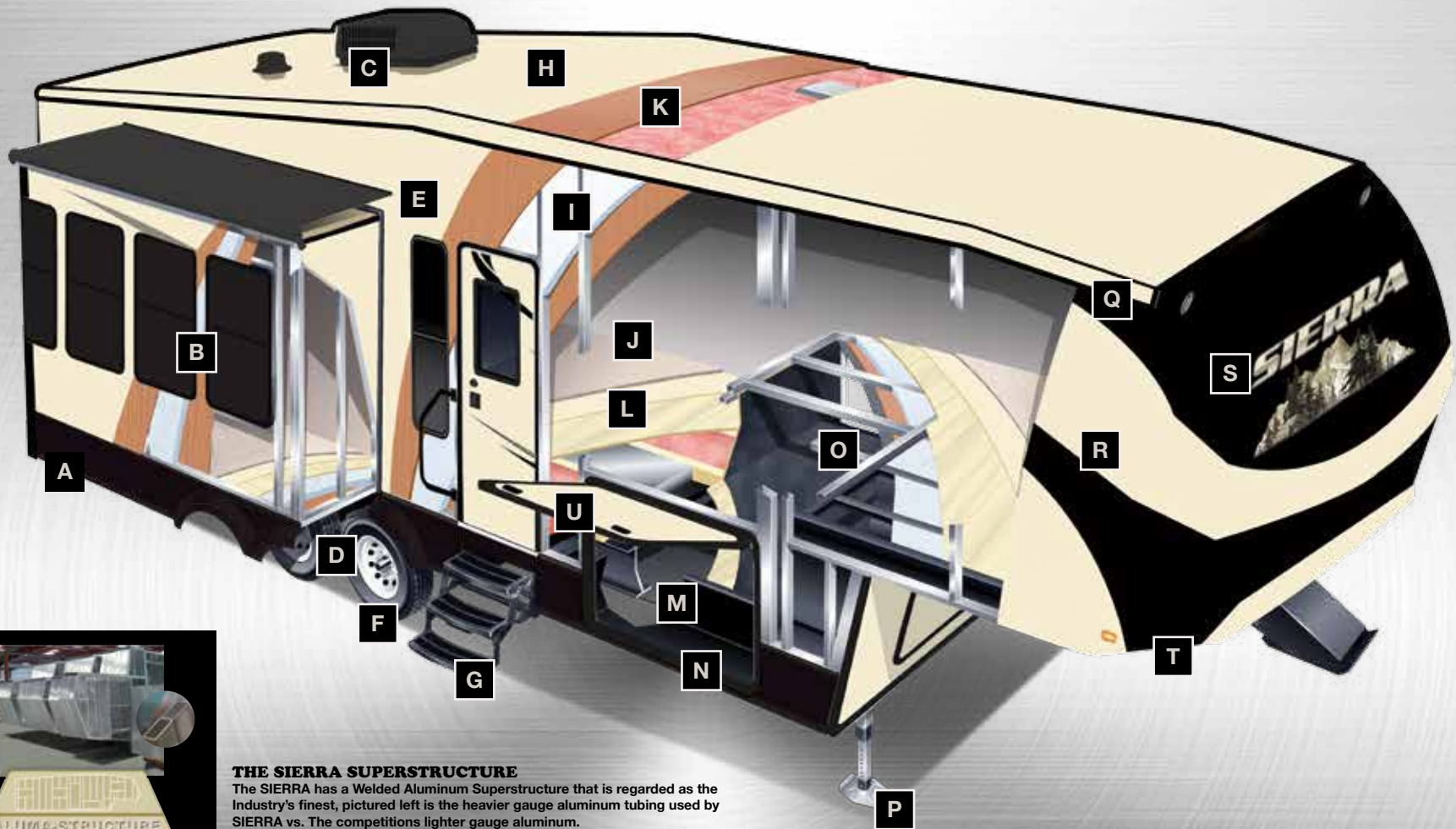
MERLOT INTERIOR



PEBBLE INTERIOR



BEACHWOOD INTERIOR



THE SIERRA SUPERSTRUCTURE

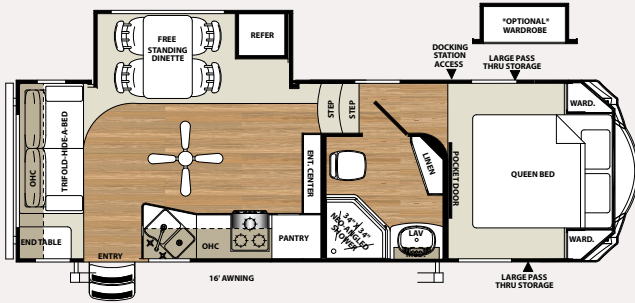
The SIERRA has a Welded Aluminum Superstructure that is regarded as the industry's finest, pictured left is the heavier gauge aluminum tubing used by SIERRA vs. The competitions lighter gauge aluminum.

- A. ROLLED ALUMINUM SIDE SKIRTING
- B. SAFETY GLASS TINTED WINDOWS (80%)
- C. DUAL ZONE DUCTED 15K BTU AIR CONDITIONING
- D. DEXTER AXLES WITH AUTO ADJUST BRAKES
- E. LAMINATED VACUUM BONDED ALUMINUM SIDEWALLS
- F. E RATED RADIAL TIRES
- G. HICKORY SPRINGS™ RADIUS ENTRY STEPS
- H. COLOR MATCHED SEAMLESS RUBBER ROOF
- I. 2" BLOCK FOAM INSULATION
- J. STAIN RESISTANT CARPET W/ PADDING
- K. 3/8" ROOF DECKING (FULL WALK-ON ROOF)
- L. 5/8" TONGUE AND GROOVE PLYWOOD FLOORING
- M. ENCLOSED HEATED UNDERBELLY
- N. I-BEAM POWDER-COATED FRAME W/ RUST INHIBITOR
- O. ALUMINUM LAMINATED INSULATED BATH DECK
- P. POWER FRONT JACKS WITH QUICK RELEASE SNAP PINS (HYDRAULIC JACKS OPTIONAL)
- Q. SLEEK RADIUS ROOF
- R. COLOR MATCH HIGH GLOSS GEL-COATED COLORED FIBERGLASS EXTERIOR
- S. PAINTED GEL-COAT FIBERGLASS TWO TONE FRONT CAP (STANDARD)
- T. IMPROVED FRONT CAP FOR SHARPER TURNING RADIUS
- U. INSULATED SLAM LOCK BAGGAGE DOORS

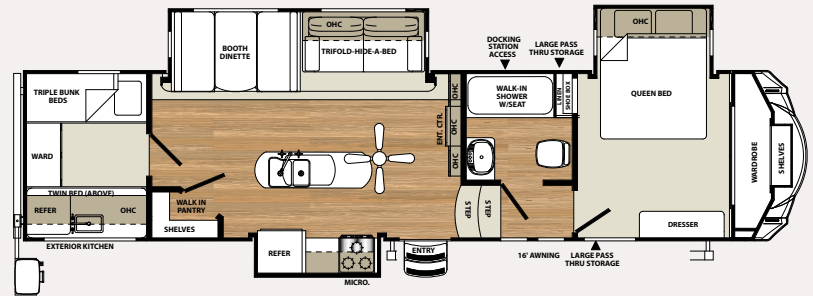


The Sierra floorplan lineup is one of the most diverse on the market. We offer some of the most popular floorplans in the industry, but we also offer our customers more. We offer floorplans that are designed from the ground up to be the most functional, efficient and luxurious RV's on the market.

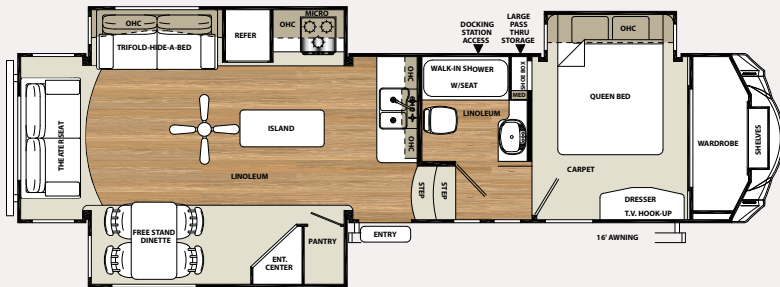
25RLS



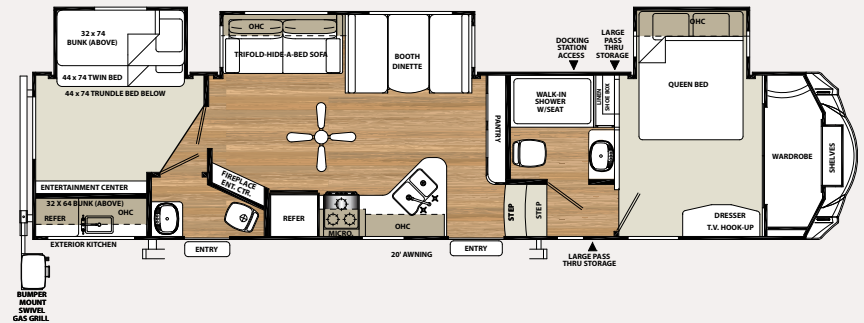
3010K



34CK

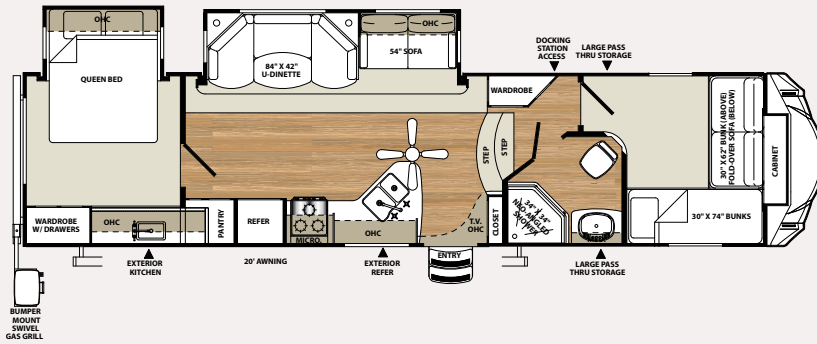


357TRIP

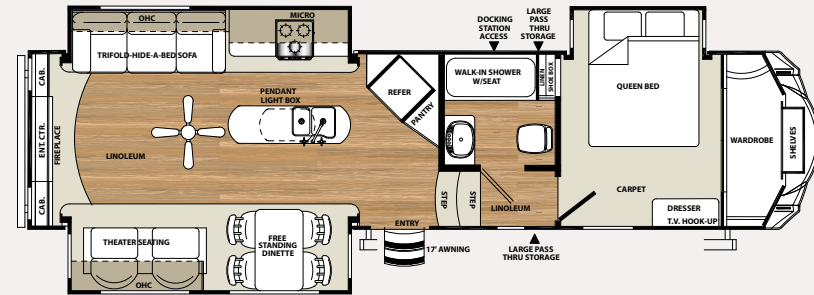


SIERRA

32QBBS



329RE



SIERRA FIFTH WHEEL SPECIFICATIONS

MODEL	25RLS	30IOK	32QBBS	329RE	34CK	357TRIP
HITCH	1,472	1,930	1,896	2,218	2,007	1,980
UVW	7,585	10,486	9,059	10,055	10,167	11,248
GVWR	13,472	13,930	13,896	14,218	14,007	13,980
CARGO	5,887	3,444	4,837	4,163	3,840	2,732
LENGTH	29' 0"	37' 11"	36' 11"	36' 3"	39' 11"	40' 3"
HEIGHT	12' 6"	12' 6"	13' 0"	13' 3"	13' 2"	13' 2"
AWNING	18'	16'	20'	16'	16'	20'
BLACK	33	50	44	50	50	100
GRAY	33	77	88	80	100	145
FRESH	43	56	43	56	56	56

See back cover for more information on weights.



PRE-DELIVERY INSPECTION FACILITY

20,000 square feet of quality assurance. The bare essentials for a premium product. This state-of-the-art facility gives immediate daily feedback to production for quality assurance in every unit built.



Forest River, Inc. encourages our customers to purchase their Forest River products whenever possible for the following reasons:

It is the goal of Forest River, Inc. that all of our RV owners fully enjoy the RV experience and that customer satisfaction meets or exceeds their expectations!

- 1) Forest River, Inc. dealers are independently owned and operated businesses so priority service and scheduling is at their discretion and is often provided to customers that purchased their unit at that dealership.
- 2) Purchasing locally allows customers to establish meaningful relationships with a dealer, enhancing the RV experience through assistance with product questions, user tips or RV regulations for your state or country, and much more!
- 3) Canadian customers must meet requirements to bring an RV purchased out of the country to their home. These requirements may involve additional inspections and certifications, taxes and fees. Your local Canadian Dealer is a professional at meeting these requirements.
- 4) Scheduling timely warranty repairs and adjustments through a local dealership provides far greater flexibility and convenience to you, the customer!

24/7 EMERGENCY ROADSIDE ASSISTANCE

For a worry-free ownership experience Forest River includes one year of Coach-Net RV Technical & Roadside Assistance with each RV purchase. Whether new to the RV lifestyle or an experienced RV enthusiast, Forest River owners have 24/7 access to technical, operational and emergency road service coverage throughout the US & Canada. Coach-Net's fast, dependable service is just a phone call away.

Coach-Net®

RV Technical & Roadside Assistance

FREE MEMBERSHIP

to Forest River Owners' Group

www.forestriverfrog.com



SIERRA

GVWR (Gross Vehicle Weight Rating) - is the maximum permissible weight of the unit when fully loaded. It includes all weights, inclusive of all fluids, cargo, optional equipment and accessories. For safety and product performance do NOT exceed the GVWR.

GAWR (Gross Axle Weight Rating) - is the maximum permissible weight, including cargo, fluids, optional equipment and accessories that can be safely supported by a combination of all axles.

UVW (Unloaded Vehicle Weight)* - is the typical weight of the unit as manufactured at the factory. It includes all weight at the unit's axle(s) and tongue or pin and LP Gas. The UVW does not include cargo, fresh potable water, additional optional equipment or dealer installed accessories.

*Estimated Average based on standard build optional equipment.

CCC (Cargo Carrying Capacity)** - is the amount of weight available for fresh potable water, cargo, additional optional equipment and accessories. CCC is equal to GVWR minus UVW. Available CCC should accommodate fresh potable water (8.3 lbs per gallon). Before filling the fresh water tank, empty the black and gray tanks to provide for more cargo capacity.

** Estimated average based on standard build optional equipment

Each Forest River RV is weighed at the manufacturing facility prior to shipping. A label identifying the unloaded vehicle weight of the actual unit and the cargo carrying capacity is applied to every Forest River RV prior to leaving our facilities.

The load capacity of your unit is designated by weight, not by volume, so you cannot necessarily use all available space when loading your unit.

All information contained in this brochure is believed to be accurate at the time of publication. However, during the model year, it may be necessary to make revisions and Forest River, Inc., reserves the right to make all such changes without notice, including prices, colors, materials, equipment and specifications as well as the addition of new models and the discontinuance of models shown in this brochure. Therefore, please consult with your Forest River dealer and confirm the existence of any materials, design or specifications that are material to your purchase decision.



Learn More

Scan this barcode using a QR Reader on your smart phone to learn more about Forest River.



A Berkshire Hathaway company.

Forest River, Inc.
2012 Century Dr.
Goshen, IN 46528
(574) 389-4600
www.forestriverinc.com/Sierra
www.forestriveraccessories.com

YOUR SIERRA DEALER