

WORK *and* PLAY

WORK *and* PLAY

FRP, ULTRA & LE MODELS
BY FOREST RIVER



FRP SERIES



25WAB / LIVING AREA

AVAILABLE EXTERIOR COLORS:



BLACK



RED



SILVER



WHITE



30WRS / BATHROOM



30WRS / REAR CARGO AREA



30WRS / BEDROOM

The industry's best rugged construction.

Work and Play's Industry Exclusive FRP Gelcoat Sidewall offers the distinguished buyer four color options, and its rugged construction allows Work and Play to build you the industry's best floorplans with the most carrying capacity. Work and Play has both garage and open concept floor plans. Many of the Work and Play beds are full length residential size queen beds, making it easy to select that perfect sheet!



25WAB / BATHROOM



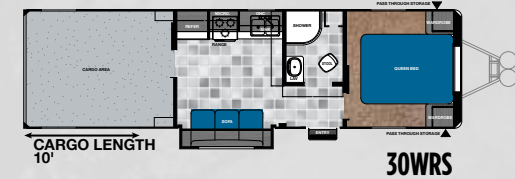
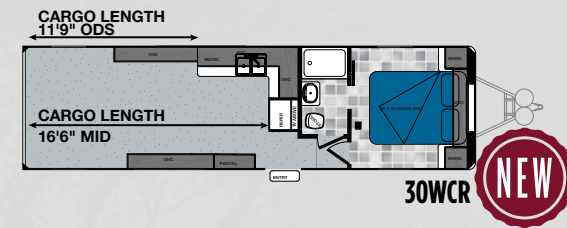
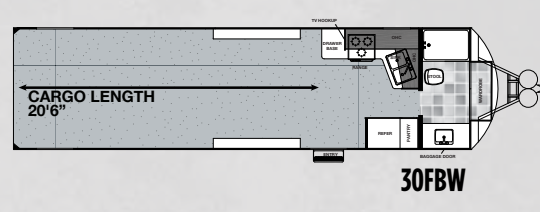
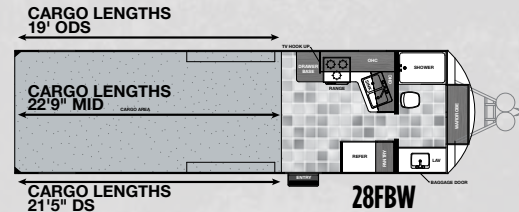
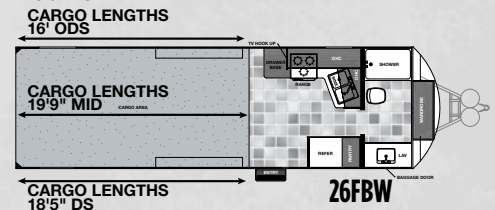
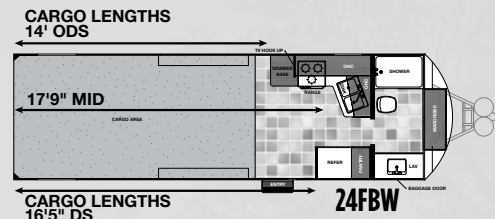
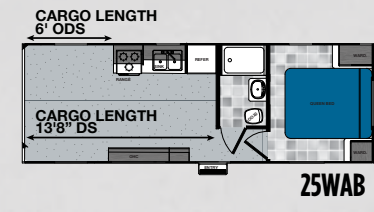
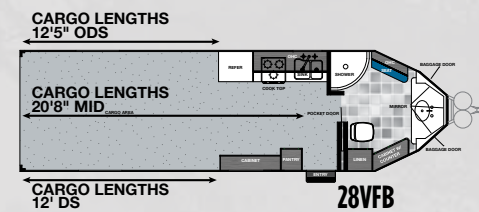
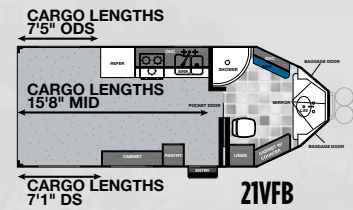
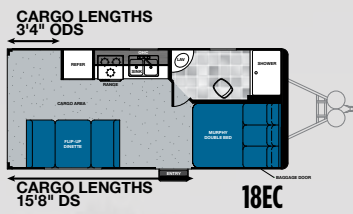
30WRS / LIVING AREA

Lots of living space for all.

Work and Play delivers headroom in the bathroom with our 7'6" interior height which is standard in the FRP and Ultra Series. The optional Happi-Jack Bed offers additional sleeping space for your family and guests.



25WAB / BEDROOM



Model #	18EC	25WAB	21VFB	28VFB	24FBW	26FBW	28FBW	30FBW	30WCR	30WRS	34WRS
Hitch Weight	1163	1325	945	884	1363	1751	1580	1621	1545	1469	1790
Axle Weight	4585	6182	5055	6859	5597	5946	5895	6660	7970	7400	7964
No. Axles	2 (4400)	2 (5200)	2 (4400)	2 (5200)	2 (6000)	2 (6000)	2 (6000)	2 (6000)	2 (6000)	2 (6000)	2 (7000)
UVW	5807	7566	6000	6859	6960	7697	7475	8340	9574	8928	9813
GVWR	9963	10125	9745	9684	13363	13751	13580	13621	13545	13469	14000
Box Length	19'7"	25'	24'3"	29'1"	25'6"	27'6"	31'6"	33'8"	33'8"	33'8"	37'5"
Total Length	24'2"	30'	26'6"	31'4"	28'8"	30'8"	34'8"	36'	35'9"	36'	40'
Cargo Capacity	4156	3919	3707	2766	5000	5000	5000	5000	3971	4541	4187
Cargo Length	3' 4" ODS / 15' 8" DS	6' ODS / 13' 8" DS	7'5" ODS / 15'8" MID / 7'1" DS	12' 5" ODS / 20' 8" MID / 12" DS	14' ODS / 17'9" MID / 16' 5" DS	16' ODS / 19'9" MID / 18'5" DS	19' ODS / 22'9" MID / 21'5" DS	21' 2" ODS / 25" MID / 23'5" DS	11' 9" ODS / 16'6" MID	10'	14'
Water Capacity	110 GAL	110 GAL	110 GAL	110 GAL	110 GAL	110 GAL	110 GAL	110 GAL	110 GAL	110 GAL	110 GAL
Black/Gray Water	38/26	38/38	38/38	38/38	38/38	38/38	38/38	38/38	38/38	38/38	38/38
Hitch Size	2 5/16"	2 5/16"	2 5/16"	2 5/16"	2 5/16"	2 5/16"	2 5/16"	2 5/16"	2 5/16"	2 5/16"	2 5/16"
Tire	ST225/75R15 LR D	ST225/75R15 LR D	ST225/75R15 LR D	ST225/75R15 LR D	ST235/80R16 LR E	ST235/80R16 LR E	ST235/80R16 LR E	ST235/80R16 LR E	ST235/80R16 LR E	ST235/80R16 LR E	ST235/85R16 LR G

The Unloaded Vehicle Weight (UVW) listed represents the weight of one trailer with that model's standard equipment including the content of specified Option Packages. * See back cover for further specification definitions.

ULTRA SERIES



28UCR / BEDROOM



28UCR / HAPJIAC BED (OPTIONAL)



28UCR / BATHROOM



28UCR / LIVING AREA



28UCR / LIVING & KITCHEN

Ultra lite. Ultra fun.

The Work and Play Ultra Series has the time tested construction Work and Play is known for, offered in two distinguished colors. Utilizing a two inch laminated side wall the Ultra Series offers a light weight coach for weekend fun! With both garage and open floor plan concepts, Work and Play offers a unit that's perfect for you!

ULTRA SERIES



25ULA / LIVING AREA



25ULA / GARAGE

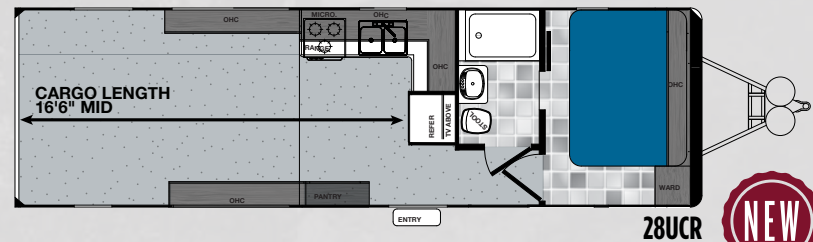
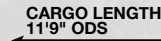
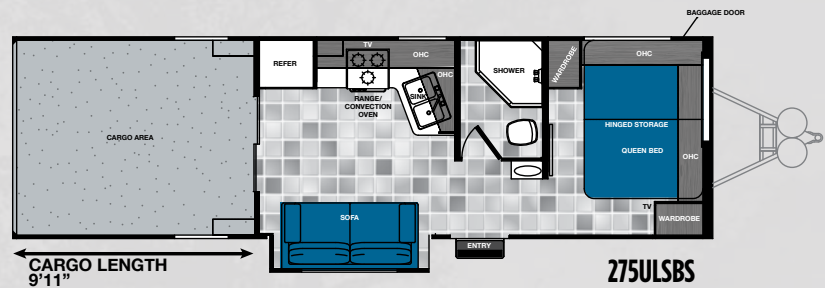
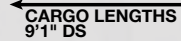
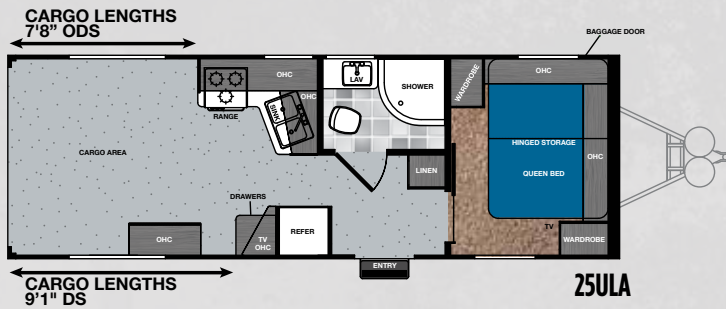
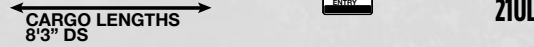
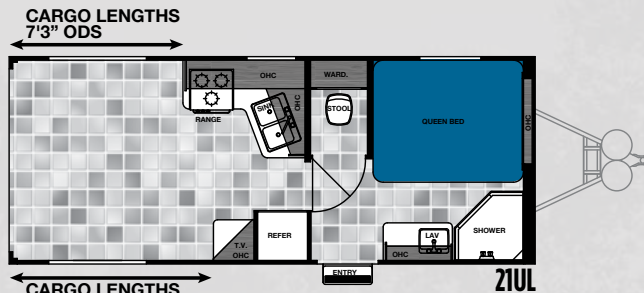
The Work and Play front cap, standard on most Ultra and FRP coaches, (option on 18EC) gives an aerodynamic look, generator protection and storage so you're not taking up potential pass through storage, as well as protection for the LP tanks.



LED AWNING LIGHT



25ULA / BEDROOM



Model #	21UL	25ULA	275ULSBS	28UCR
Hitch Weight	1215	1594	1417	1538
Axle Weight	5288	5377	6546	7074
No. Axles (lb.)	2 (5200)	2 (5200)	2 (5200)	2 (6000)
UVW	6503	7030	8022	8671
GVWR	11375	11754	11577	13538
Box Length	24'3"	27'9"	31'9"	31'9"
Total Length	26'4"	30'	34'	34'
Cargo Capacity	4813	4724	3555	4867
Cargo Length	7'3" ODS / 8'3" DS	7'8" ODS / 9'1" DS	9'11"	11' 9" ODS / 16' 6" MID
Water Capacity	110 GAL	110 GAL	110 GAL	110 GAL
Black/Gray Water	38/38	38/38	38/38	38/38
Hitch Size	2.5/16"	2.5/16"	2.5/16"	2.5/16"
Tire	ST225/75R15 LR D	ST225/75R15 LR D	ST225/75R15 LR D	ST235/80R16 LR E

The Unloaded Vehicle Weight (UVW) listed represents the weight of one trailer with that model's standard equipment including the content of specified Option Packages. * See back cover for further specification definitions.

True Half-Ton Towable.

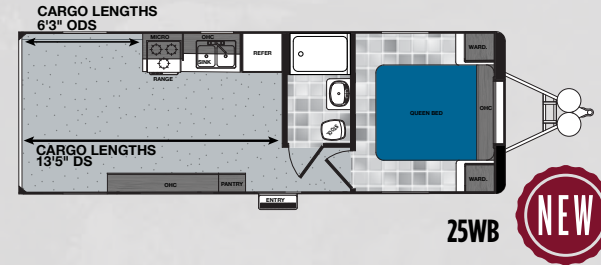
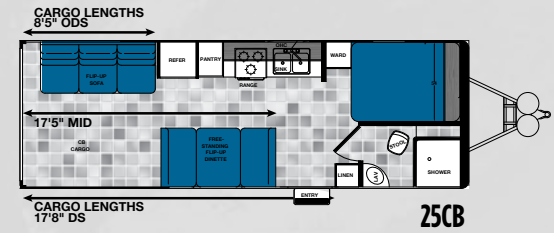
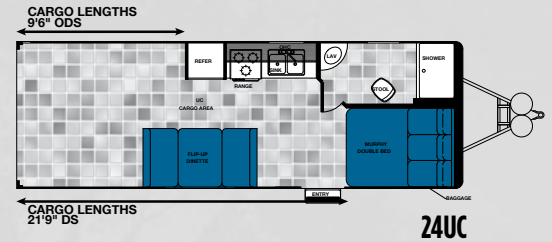
The Ultra LE Series comes equipped with all the heavy duty construction Work and Play has been known for... now at a more affordable price. Each unit comes with the core necessities for enjoying family weekends and vacations. Equipped, not stripped, with awning, rear stabilizer jacks, microwave, refrigerator, spare tire, stereo, among other amenities, the Ultra LE Series is the ultimate in value and affordability!!!



25CB / STORAGE SPACE



25CB / LIVING SPACE



Model #	24UC	25CB	25WB
Hitch Weight	1070	1068	1118
Axle Weight	4622	4720	5434
No. Axles (lb.)	2 (4400)	2 (4400)	2 (5200)
UVW	5751	5847	6611
GVWR	9870	9868	11278
Box Length	27'9"	27'9"	28'
Total Length	30'	30'	30'3"
Cargo Capacity	4119	4021	4667
Cargo Length	9'6" ODS / 21' 9" DS	8' 5" ODS / 17' 5" MID / 17' 8" DS	6'3" ODS / 13'5" DS
Water Capacity	110 GAL	110 GAL	110 GAL
Black/Gray Water	38/38	38/38	38/38
Hitch Size	2.5/16"	2.5/16"	2.5/16"
Tire	ST225/75R15 LR D	ST225/75R15 LR D	ST225/75R15 LR D

The Unloaded Vehicle Weight (UVW) listed represents the weight of one trailer with that model's standard equipment including the content of specified Option Packages. * See back cover for further specification definitions.

Our fifth wheels pull like a dream.

Are you looking for a fifth wheel that cuts the headwinds like a travel trailer? The Work and Play low profile fifth wheel does exactly that with cargo lengths ranging from 10 - 23 feet. Work and Play also builds a high profile fifth wheel with a walk around bed, full residential bathroom, and cargo lengths from 11 to 21 feet.

44FKS / KITCHEN



44FKS / FRONT BEDROOM

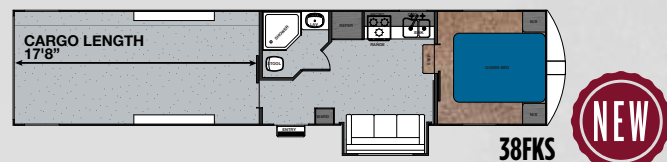


44FKS / BATHROOM

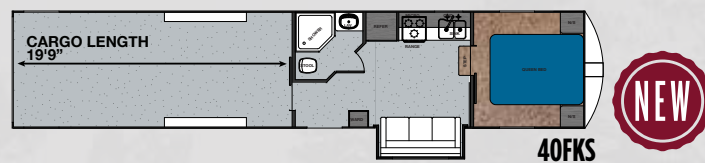


44FKS / REAR BED & STORAGE

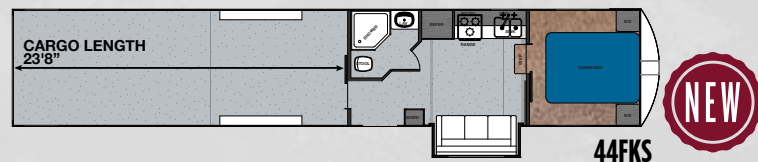
FIFTH WHEEL SERIES



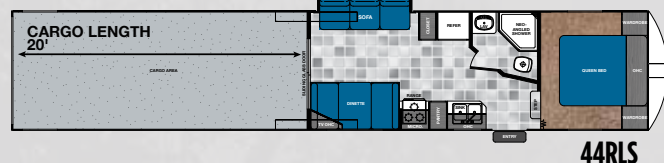
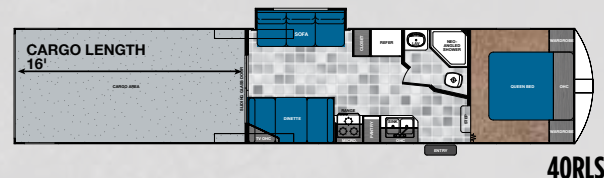
NEW



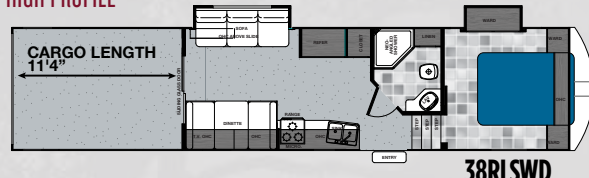
NEW



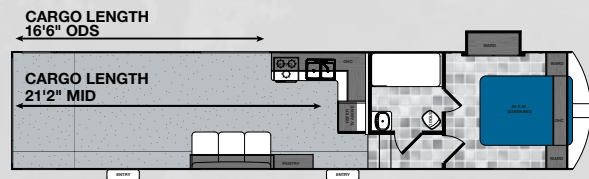
NEW



HIGH PROFILE



HIGH PROFILE



NEW

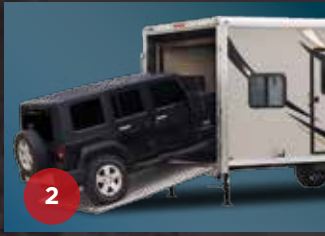
Model #	38FKS	40FKS	44FKS	34RLS	38RLS	40RLS	44RLS	38RLSWD	38FCR
Hitch Weight	3164	3178	3510	2783	2654	2608	2840	3297	3131
Axle Weight	7476	8826	8696	7768	8444	9746	10022	9401	8640
No. Axles (lb.)	2 (7000)	3 (6000)	3 (6000)	2 (7000)	2 (7000)	3 (6000)	3 (6000)	2 (7000)	2 (7000)
UVW	10699	12063	12265	10551	11098	12354	12862	12698	11830
GVWR	17164	21000	21000	16783	16654	20608	20840	17297	17131
Box Length	38'-8"	42'-8"	46'-6"	34'-8"	38'-8"	42'-8"	46'-6"	40'-3"	40'
Total Length	39'-8"	42'-8"	46'-6"	35'-8"	39'-8"	42'-8"	46'-6"	40'-3"	40'
Cargo Capacity	5000	5000	5000	5000	5000	5000	5000	4540	5301
Cargo Length	17'-7"	19'-7"	23'-7"	10'	14'	16'	20'	11'-4"	16'-6" ODS/ 17'-9" MID/ 16'-5" DS
Water Capacity	110 GAL	110 GAL	110 GAL	110 GAL	110 GAL	110 GAL	110 GAL	110 GAL	110 GAL
Black/Gray Water	38/38	38/38	38/38	38/38	38/38	38/38	38/38	38/38	38/38
Tire	LT235/85R16 LR F	ST235/80R16 LR E	ST235/80R16 LR E	LT235/85R16 LR F	LT235/85R16 LR F	ST235/80R16 LR E	ST235/80R16 LR E	ST235/85R16 LR G	ST235/85R16 LR G

The Unloaded Vehicle Weight (UVW) listed represents the weight of one trailer with that model's standard equipment including the content of specified Option Packages. * See back cover for further specification definitions.

STANDARDS & OPTIONS



1



2



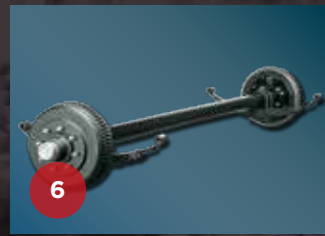
3



4



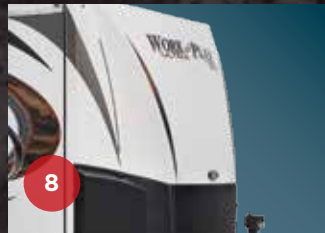
5



6



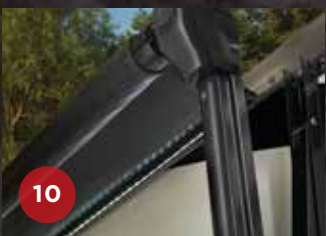
7



8



9



10



11



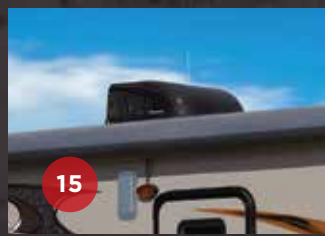
12



13



14



15



16



17

WORK and PLAY

1. Seamless one piece aluminum roof with solid cove molding edges. Rugged and no streaking from a rubber roof.

2. Low ramp transitions and clearance for easy loading (up to 5000 lbs ramp door capacity). We can carry cars!

3. Powder Coated chassis with 16" on center steel cross members throughout cargo area (Carrying capacities from 3000-7000).

4. 14 gauge, 4 ̢" Steel Roof Rafters every 16" throughout the coach.

5. Million Mile Fasteners with nylon bushings and thread adhesive to assure a secure fit for the life of the coach.

6. Name Brand Dexter Axles ranging from 4400 lbs to 7000 lbs. in capacity.

7. 4 Gel Coat Exterior color options: White, Silver, Red, and Black

8. Aerodynamic front caps with enclosed generator space (n/a on LE's), allows for pass through storage on certain floor plans.

9. NEW! Solar prep option. Maintain your batteries by doing nothing, just plug and let it work.

10. NEW! Power awning with LED Lighting. Full awning length LED Lights.

11. High Efficiency LED Lighting throughout interior and exterior. Better lighting, less heat, less drain on batteries.

12. 7'6" headroom throughout Offering plenty of height for the big toys, yet pulls with a low profile.

13. Easy Maintenance Foil-Wrapped Countertop. Unlike a T-mold countertop, grime will not get caught in any crevices.

14. Speed-Cook Convection Microwave. Lower cook times let you eat sooner!

15. Std 15,000 BTU Air Conditioner (n/a on LE's) Cools the unit much faster in the heated days of summer.

16. NEW! 8 cu.ft. refrigerator (n/a on LE's and V-nose). More room for the long weekends of playing.

17. 60" x 80" queen beds in most floor plans



Standards & Options

Interior

8 cu.ft refer (FRP and Ultra Series)
6 cu.ft. refer (LE, V-Nose)
Foil Wrapped Counter Tops
Double Bowl Sink in Kitchen
2 Burner Cook Top (LE's and 18EC)
3 Burner Cook Top
Microwave (LE's)
Convection Microwave (All units except LE's)
Porcelain Toilet (N/A LE's)
Screwed Together Cabinet Construction
Easy Glide Full Extension Drawer Guides with Bull Nose latches
Night Shades in Bedroom
Bed Spread and Pillow Shams were applicable
Rear Pull Down Screen
AM/FM/CD/DVD Stereo
60"x80" Residential Queen Bed (Most Floor Plans)
LED Lights throughout
LP Detector
Smoke Detector
Sliding Glass Doors on Garage Models

Exterior

Spare Tire and Carrier
Aluminum Wheels
Nitro Fill Tires
Battery and Battery Disconnect
Power Tongue Jack w/ Light (N/A on LE's)
Power Awning w/ LED Light Strip (N/A LE's)
Manual Awning on LE's
(4) Stabilizer Jacks
ToyLok® Retractable Cable Lock (N/A LE's)
Double Entry Step
(4) Exterior Color Options on FRP Walls

(2) Exterior Color on Ultra Series
Silver Exterior on LE's
One Piece Fiberglass Cap w/ Gen and LP Comp (N/A on LE, opt on 18EC)
Black Trim Windows with Tinted Safety Glass
2 Mil Arlon Air Egress Vinyl Graphics
LED Lights throughout
Outside Exterior Speakers (N/A LE's)
Outside Shower (N/A on LE)
Lighted Storage Compartments

Garage

2500# D-rings (Optional 5000#) secured into steel plates
Congoleum® Designer Series Linoleum or Rubberized Flooring
Metal 2-Way Air Vents
Low ramp angles for easy loading

Construction

102" Wide Body Construction
Powder Coated Chassis
Dexter Axles ranging from 4400 - 7000 lbs
16" o.c. Cross Members Throughout Garage Area
Galvanized Steel Wheel Wells
(1) Piece Jumbo Decking Up To 24'
FRP Sidewalls (N/A on Ultra or Ultra LE Series)
2" Laminated Walls on Ultra and LE Series (N/A on FRP units)
4.25" Steel Roof Trusses the Entire Length of Coach
One Piece Aluminum Roof
3000# Ramp Doors on LE's
4000# Ramp Doors on FRP and Ultra Series
5000# Ramp Doors on Certain Floor Plans

Utilities

30 Amp Service (All TT)
50 Amp Service (All Fifths)
15k BTU Ducted A/C (N/A LE's)
13.5 BTU A/C on LE's
(2) 30lbs LP Tanks
6 Gal Water Heater (N/A Fifth Wheels)
10 Gal Water Heater (Fifth Wheels)
Water Heater By Pass
Sewer Hose Carrier
Either 19k or 30k BTU Furnace

Some Popular Options

(N/A on all Floor Plans or LE's)

10 Gal Water Heater
Dual Pane Windows
32" LED Flat Screen TV
50 Amp Service
Gen Prep
4.0 or 5.5 Onan® Generator (Fuel Cell or Station Required)
2nd A/C (Prep standard on fifth wheels)
30 Gal Fuel Cell or Station w/ Pump
Escape Door in Cargo w/ Single Step and Bogey Wheels
Rear Entry Door
Beavertail Frame (24' and above on FRP only)
One Piece Fiberglass Cap with Generator Rack on LE's (LE's Only)
Upgraded Serta Mattress
54" or 60" Happijac Bed



PRE-DELIVERY INSPECTION FACILITY

20,000 square feet of quality assurance. The bare essentials for a premium product. This state-of-the-art facility gives immediate daily feedback to production for quality assurance in every unit built.



Forest River, Inc. encourages our customers to purchase their Forest River products from a local dealership whenever possible for the following reasons:

It is the goal of Forest River, Inc. that all of our RV owners fully enjoy the RV experience and that customer satisfaction meets or exceeds their expectations!

- 1) Forest River, Inc. dealers are independently owned and operated businesses so priority service and scheduling is at their discretion and is often provided to customers that purchased their unit at that dealership.
- 2) Purchasing locally allows customers to establish meaningful relationships with a dealer, enhancing the RV experience through assistance with product questions, user tips or RV regulations for your state or country, and much more!
- 3) Canadian customers must meet requirements to bring an RV purchased out of the country to their home. These requirements may involve additional inspections and certifications, taxes and fees. Your local Canadian Dealer is a professional at meeting these requirements.
- 4) Scheduling timely warranty repairs and adjustments through a local dealership provides far greater flexibility and convenience to you, the customer!

Specification Definitions

GVWR (Gross Vehicle Weight Rating) - is the maximum permissible weight of the unit when fully loaded. It includes all weights, inclusive of all fluids, cargo, optional equipment and accessories. For safety and product performance do NOT exceed the GVWR.

GAWR (Gross Axle Weight Rating) - is the maximum permissible weight, including cargo, fluids, optional equipment and accessories that can be safely supported by a combination of all axles.

UVW (Unloaded Vehicle Weight)* - is the typical weight of the unit as manufactured at the factory. It includes all weight at the unit's axle(s) and tongue or pin and LP Gas. The UVW does not include cargo, fresh potable water, additional optional equipment or dealer installed accessories.

*Estimated average based on standard build optional equipment.

CCC (Cargo Carrying Capacity)** - is the amount of weight available for fresh potable water, cargo, additional optional equipment and accessories. CCC is equal to GVWR minus UVW. Available CCC should accommodate fresh potable water (8.3 lbs per gallon). Before filling the fresh water tank, empty the black and gray tanks to provide for more cargo capacity.

** Estimated average based on standard build optional equipment

Each Forest River RV is weighed at the manufacturing facility prior to shipping. A label identifying the unloaded vehicle weight of the actual unit and the cargo carrying capacity is applied to every Forest River RV prior to leaving our facilities.

The load capacity of your unit is designated by weight, not by volume, so you cannot necessarily use all available space when loading your unit.

NOTES

24/7 EMERGENCY ROADSIDE ASSISTANCE

For a worry-free ownership experience Forest River includes one year of Coach-Net RV Technical & Roadside Assistance with each RV purchase. Whether new to the RV lifestyle or an experienced RV enthusiast, Forest River owners have 24/7 access to technical, operational and emergency road service coverage throughout the US & Canada. Coach-Net's fast, dependable service is just a phone call away.

Coach-Net®
RV Technical & Roadside Assistance

YOUR WORK & PLAY DEALER



Learn More
Scan this barcode using a QR Reader on your smart phone to learn more about Forest River.



A Berkshire Hathaway company.

3010 COLLEGE AVENUE, GOSHEN, IN 46528 WWW.FORESTRIVERINC.COM 574.533.5934
© COPYRIGHT 2011 WORK AND PLAY, A DIVISION OF FOREST RIVER INC. ALL RIGHTS RESERVED.

All information contained in this brochure is believed to be accurate at the time of publication. However, during the model year, it may be necessary to make revisions and Forest River, Inc., reserves the right to make all such changes without notice, including prices, colors, materials, equipment and specifications as well as the addition of new models and the discontinuance of models shown in this brochure. Therefore, please consult with your Forest River dealer and confirm the existence of any materials, design or specifications that are material to your purchase decision. Litho. U.S.A P / W: 2014.10.23