

Quailridge



REALIZE YOUR DREAMS



You have been dreaming about it for years, and now the time has come. You are finally searching for that perfect getaway, the one you have always talked about. Look no further, you have found **Quailridge** by Forest River. **Quailridge** will take you to the next chapter in your life, time to stop dreaming and start living with a park model that gives you everything you have been looking for. Welcome home, welcome to **Quailridge**.

Quailridge





VINTAGE MAPLE | QUARRY DECOR | PUTTY LA-Z-BOY®

Quailridge

3

Q



VINTAGE MAPLE | FREDRICK COUNTERTOP

COMFORT

Forest River **Quailridge** has the park model to meet any expectations. Designed with a purpose, there are a host of special features to enhance comfort, convenience, and enjoyment. Special amenities pamper you in charming style for a truly enjoyable vacation retreat. Every square inch is engineered to enrich leisure time with home like comforts and time saving conveniences. Plus, every **Quailridge** park model has been Certified Green by TRA Certification™.



VINTAGE MAPLE | QUARRY DECOR

Quailridge



BUTTER RUM | GRAPHITE DECOR

QUALITY

Enjoy a whole new dimension of holiday living. **Quailridge** cottages are designed to be aesthetically pleasing and fully functional. They're quality built to meet or exceed national park model standards, so you know you're investing in long lasting value.

Perfect for weekend getaways or a whole season the **Quailridge** won't break the budget but will exceed your expectations. Quality, value, integrity, **Quailridge** has you covered.





BUTTER RUM | GRAPHITE DECOR | TAN LA-Z-BOY®

THE DIFFERENCE IS IN THE DETAILS.

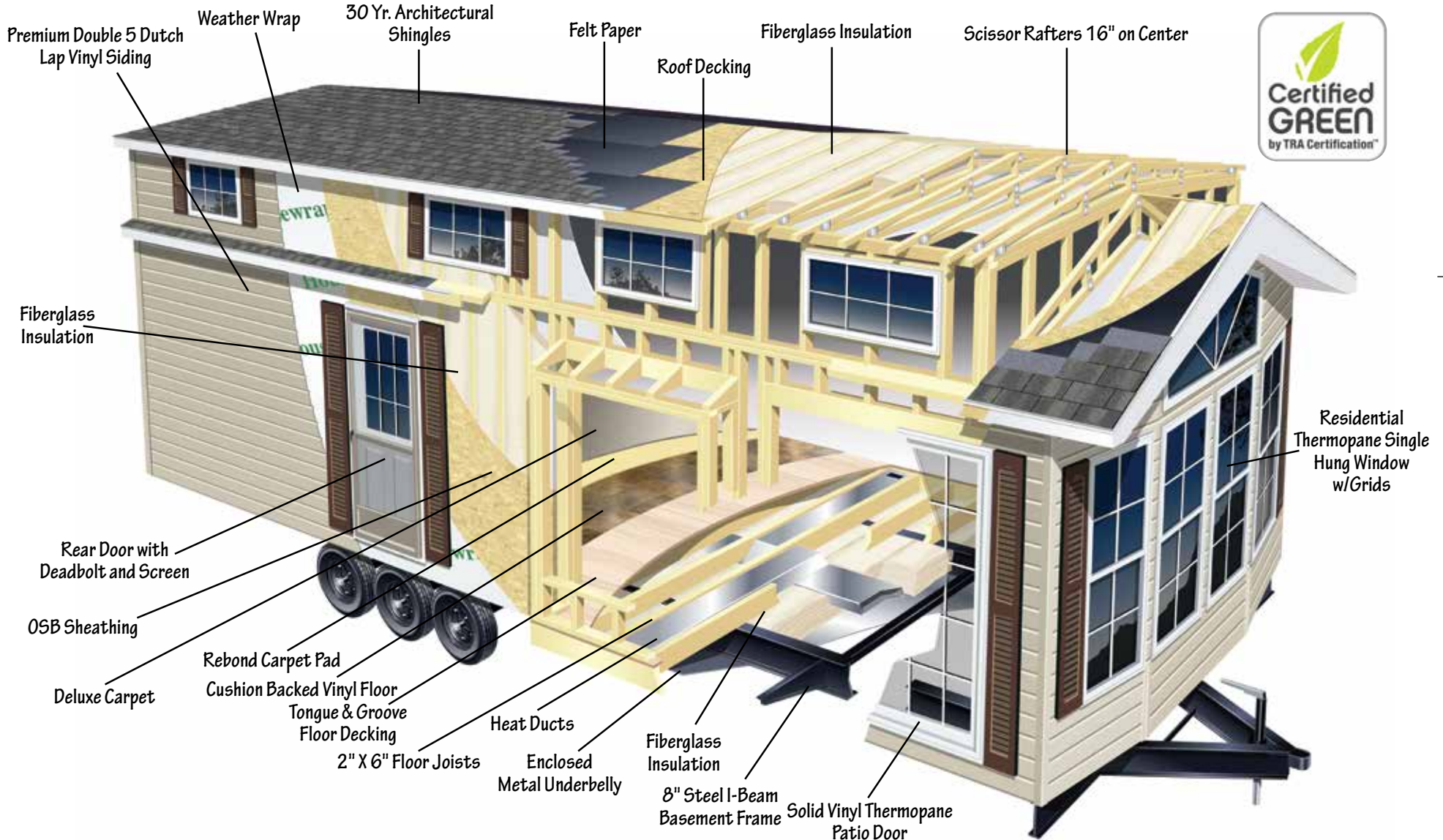


- A.* The residential styling of the **Quailridge** includes an electric fireplace with decorative mantle, the perfect centerpiece to the open concept floorplans.
- B. Our tall loft with dropped floor is a perfect getaway for kids and guests, the cabinet storage with integrated entertainment center* is a great feature.
- C. The aesthetic beauty of hidden hinges combined with the convenience of adjustable shelves gives our handcrafted cabinetry a truly residential feel.
- D.* The easy access under bed storage with 80 lbs. gas assist strut lift is a great place to store bedding or seasonal items when they are not needed.
- E. The bedroom of the **Quailridge** has 2 built in wardrobes and chest of drawers for storage, it also doubles as a vanity for a great place to get ready.
- F. A trash receptacle on a sliding tray is just one example of the many ways that **Quailridge** strives to bring you the ultimate in easy living.
- G. The bathroom is an oasis of comfort, featuring tons of storage, full size toilet, residential vanity and a large neo-angle shower* with glass door.

* denotes optional feature

FOREST RIVER PARK MODELS-BUILT FOR THE TIME OF YOUR LIFE

Quality is built into every park model at Forest River. Forest River's years of park model experience have taught us how to develop a product that is both well built and price competitive. Forest River incorporates production techniques and construction features into each and every quality built park model. You are making an investment, Forest River wants your investment to hold its value, and allow you a worry free leisurely lifestyle. Purchasing from a financially strong company is something you should feel good about. We are a part of Berkshire Hathaway and we are in this for the long haul.



EXTERIOR FEATURES

- Vinyl Siding with Lifetime Warranty
- Asphalt Architectural Upgrade Roofing Shingles (30 Year Warranty)
- Residential Shutters – Windows and Entry Doors*
- Residential Thermopane Single Hung Windows w/Grids
- Rear Door with Deadbolt Lock and Screen
- Solid Vinyl Patio Door
- R-11 Fiberglass Insulation with Vapor Barriers
- 8” I-Beam Steel Mains – Basement Frame
- Detachable Hitch
- Metal Underbelly
- 2" x 6" Traverse Floor Joist 16" On Center
- 2" x 4" Sidewall Studs 16" On Center
- Central Floor Heat Duct
- 5/8" Tongue and Groove Plywood Floor Decking
- Scissor Rafters 16" On Center.
- Roof Decking Overlaid with Felt Paper
- 110V Recept at City Water Fill

LIVING AREA

- Hide-A-Bed Sofa and La-Z-Boy® Recliner
- Solid Wood End Table with Lamp
- Entertainment Center
- Ceiling Fan with Light Kit
- Vertical Blind on Patio Door
- Residential Crown Molding
- Coordinated Chair Rail
- Hardwood Valances in Living Room & Dining Room
- Faux Wood Mini Blinds
- Coordinated Stained 6-Panel Interior Doors

KITCHEN/DINING AREA

- 18' cu. ft. 2-Door Frost Free Refrigerator
- 30" Gas Range
- Custom Kitchen Cabinets Featuring Raised Panel Doors
- Single Lever Faucet with Pull Down Sprayer
- Pull-out Trash Can *
- Pull-Out Wire Pantry *
- Composite Sink
- No Wax Vinyl Floor
- Rectangle Dinette Table with Leaf and 4 Fabric Color
- Coordinated Storage Chairs
- Self-Edged Countertops with Wood Beveled Edge
- Decorative Backsplash
- Space Saver Microwave
- Dining Room Hutch *
- Adjustable Shelving *

BATH AREA

- 1-Piece Fiberglass Tub/Shower with Shower Curtain
- Residential Style Ceramic Commode
- Power Exhaust Fan with Light
- Custom Hardwood Medicine Cabinet
- Linen Cabinet *
- Vanity Top with Sink and Faucet
- GFI Protected Receptacle

BEDROOM AREA

- 60" x 75" Serta® Queen Mattress
- His and Her Lighted Wardrobes
- Chest-O-Drawers
- Night Stand with Lamp
- Beadsread
- TV Jack

ADDITIONAL FEATURES

- 56,000 BTU Upright Furnace
- 20 Gallon Electric Water Heater
- Frost Proof Exterior Faucet
- Exterior GFI Receptacle
- Porch Light
- Smoke Detector
- LP Detector
- Fire Extinguisher
- Touch Control Wall Switches
- All Drawers on Full Extension Roller Guides
- Hurricane Tie Down Straps
- Seaspray Gypsum Ceiling Board
- RVIA Seal

OPTIONAL FEATURES

- Front Trap Windows
- Dining Room Bay *
- Stainless Steel Appliances
- Electric Fireplace
- Home Theater System
- Wood Plank Linoleum Upgrade
- Premium Carpet Upgrade
- Gas/Electric Water Heaters
- 15,000 BTU Floor Ducted A.C.
- 42,000 BTU RV Furnace
- Washer/Dryer Prep *
- Electric Fireplace Insert
- Flip-up Bed with Under Bed Storage
- Bench Dinette Seating with Storage *
- Pit Group Living Room Furniture *
- Neo-Angle Shower *
- Loft Entertainment Center *
- Loft A/C *

* Denotes where available

HOME CUSTOMIZATION

At **Qualridge** we want to make sure you feel completely comfortable in your new home. We know the best way to do this is to allow you to personalize your home to suit your tastes. With 8 interior fabric decors and numerous other options we leave the decorating completely up to you. We stand behind our commitment to quality by offering La-Z-Boy® and Serta® products, a Forest River exclusive.



FABRIC OPTIONS



BRINDLE



PEPPERCORN



HARBOR



FERN



QUARRY



GRAPHITE



MOLASSES



TRANQUIL

LA Z BOY® OPTIONS



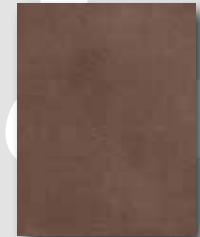
ALMOND



BLACK



SADDLE



PUTTY

OTHER OPTIONS

LINO



STANDARD



WOOD PLANK OPTION

COUNTERTOPS



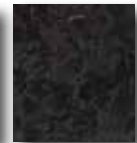
AGATHA



CITY OF LIGHTS



FREDERICK



PYRENEES
MARBLE

WALLBOARD



ALL WALLS



OPT. WAINSCOTT



HARMONY WHITE

CABINETS



VINTAGE MAPLE



BUTTER RUM



Quailridge

Forest River, Inc. Park Model Division
28936 Phillips St.
Elkhart, IN 46514
Phone: (574) 264-7613
Fax: (574) 264-7364
www.forestriverinc.com
www.forestriveraccessories.com



Learn More

Scan this barcode using
a QR Reader on your
smart phone to learn
more about Forest River.



A Berkshire Hathaway company.

All specifications contained herein are based on the latest product information at time of printing. Forest River reserves the right to make changes in prices, colors, materials, equipment and specifications at any time without notice and assumes no responsibility for any errors in this brochure. Photographs in this brochure may show props and optional equipment. All units are shipped F.O.B. Elkhart, IN CONSULT YOU LOCAL DEALER FOR WARRANTY INFORMATION

© 2014- Quailridge - a division of Forest River Inc.
A Berkshire Hathaway company

Quailridge

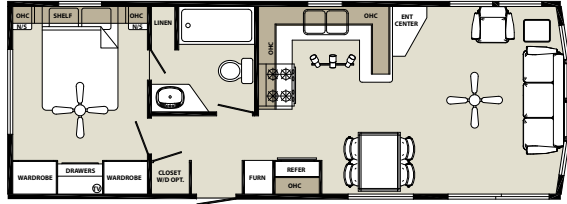


FLOOR PLAN GUIDE

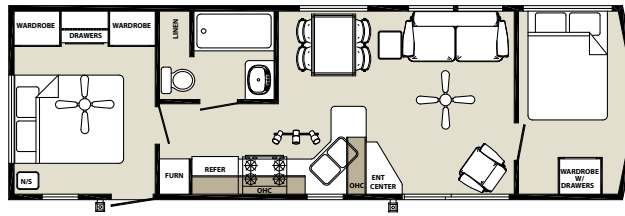


NON LOFT FLOOR PLANS

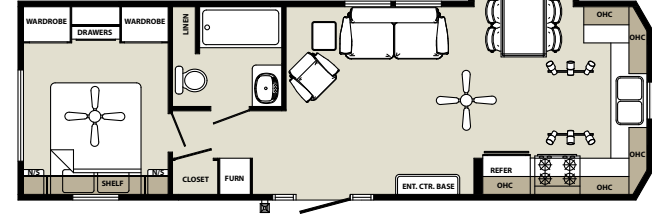
38FLA



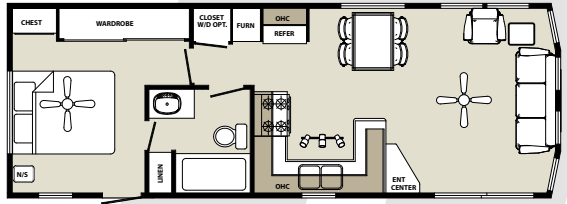
392B



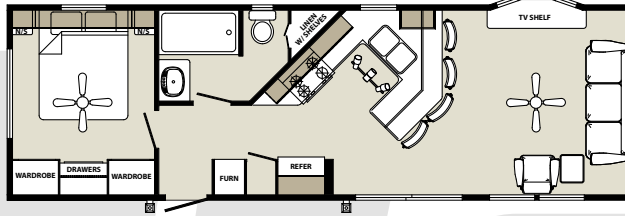
39FKB



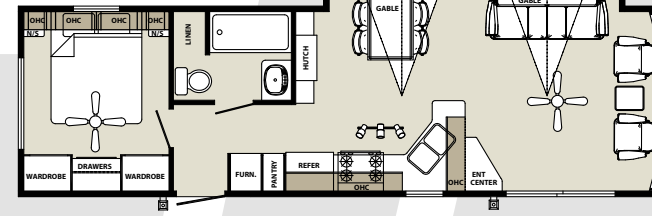
38FL



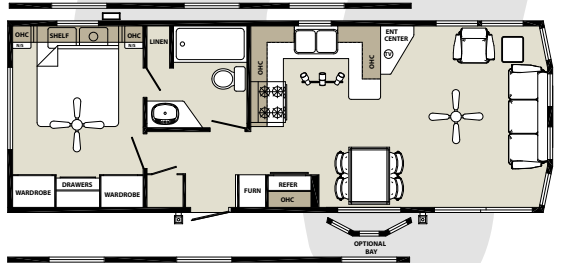
39AKFL



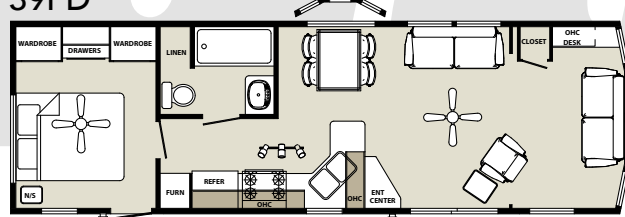
39FLSB



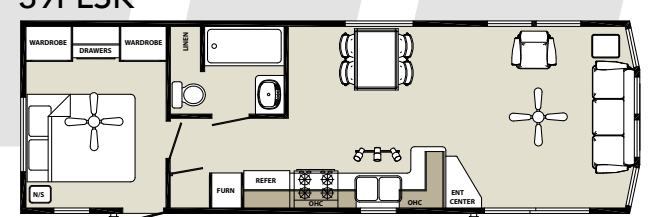
38FLAD



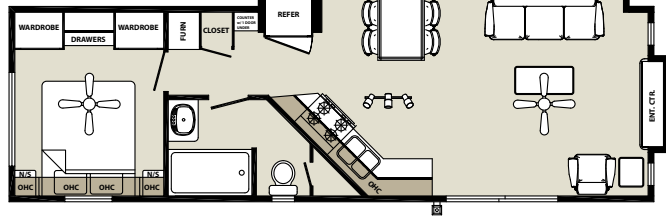
39FD



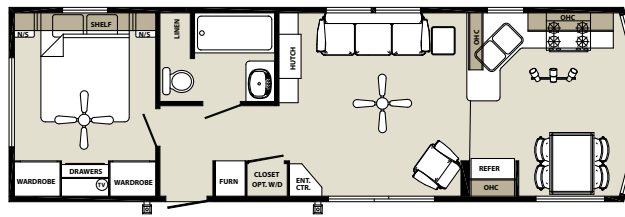
39FLSK



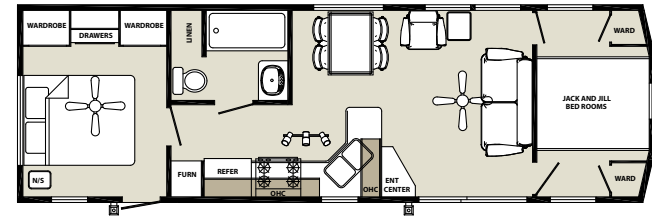
39FEC



39FK

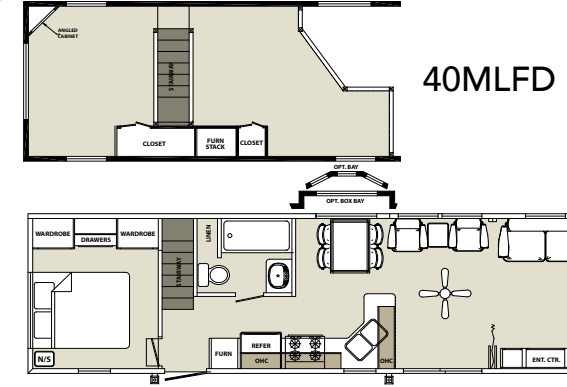
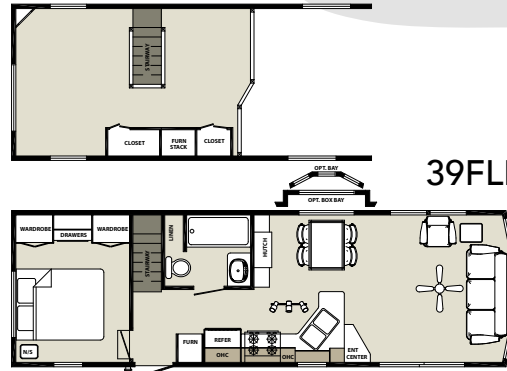
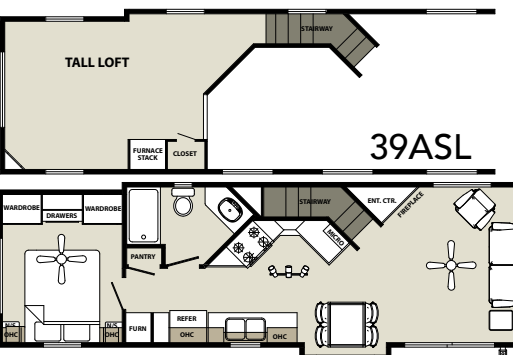
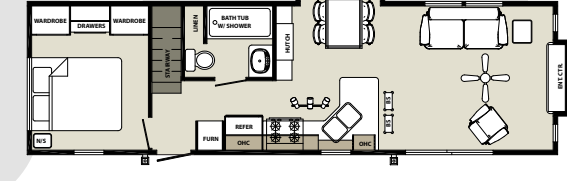
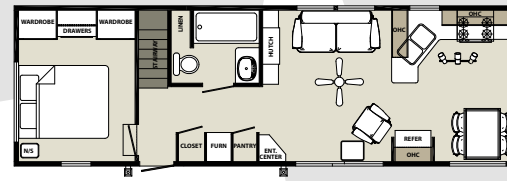
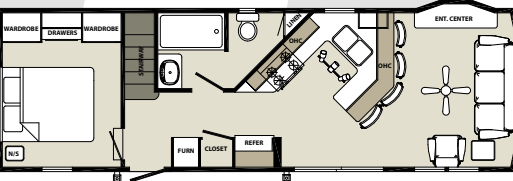
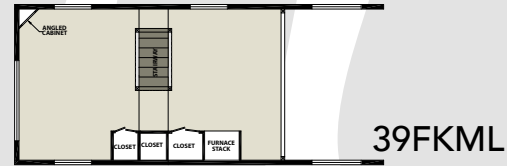
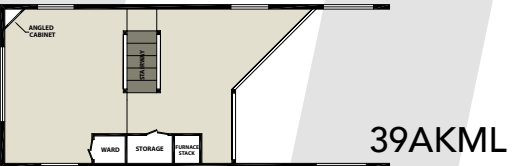
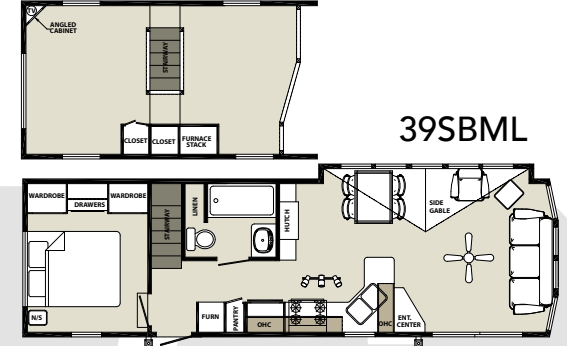
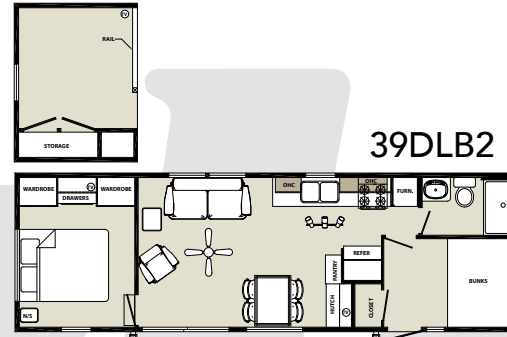
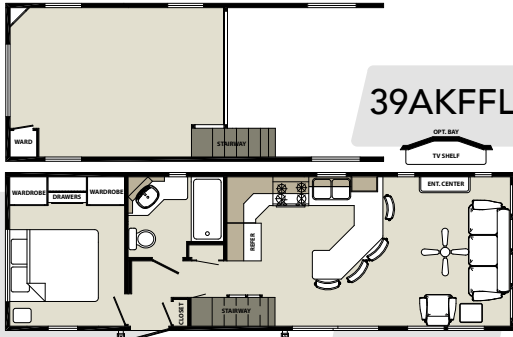
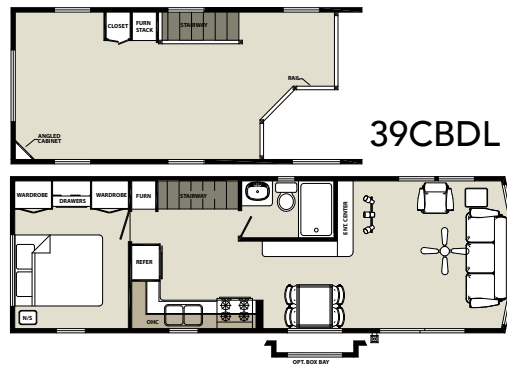
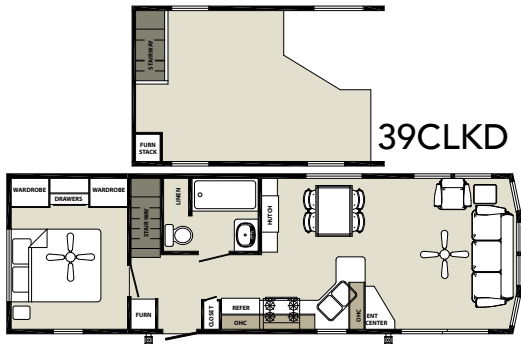


39JJ



LOFT FLOOR PLANS

LEGEND



QUAILRIDGE STANDARDS AND OPTIONS

EXTERIOR FEATURES

- Vinyl Siding with Lifetime Warranty
- Asphalt Architectural Upgrade Roofing Shingles (30 Year Warranty)
- Residential Shutters – Windows and Entry Doors*
- Residential Thermopane Single Hung Windows w/Grids
- Rear Door with Deadbolt Lock and Screen
- Solid Vinyl Patio Door
- R-11 Fiberglass Insulation with Vapor Barriers
- 8" I-Beam Steel Mains – Basement Frame
- Detachable Hitch
- Metal Underbelly
- 2" x 6" Traverse Floor Joist 16" On Center
- 2" x 4" Sidewall Studs 16" On Center
- Central Floor Heat Duct
- 5/8" Tongue and Groove Plywood Floor Decking
- Scissor Rafters 16" On Center.
- Roof Decking Overlaid with Felt Paper
- 110V Recept at City Water Fill

LIVING AREA

- Hide-A-Bed Sofa and La-Z-Boy®

Recliner

- Solid Wood End Table with Lamp
- Entertainment Center
- Ceiling Fan with Light Kit
- Vertical Blind on Patio Door
- Residential Crown Molding
- Coordinated Chair Rail
- Hardwood Valances in Living Room & Dining Room
- Faux Wood Mini Blinds
- Coordinated Stained 6-Panel Interior Doors

KITCHEN/DINING AREA

- 18' cu. ft. 2-Door Frost Free Refrigerator
- 30" Gas Range
- Custom Kitchen Cabinets Featuring Raised Panel Doors
- Single Lever Faucet with Pull Down Sprayer
- Pull-out Trash Can *
- Pull-Out Wire Pantry *
- Composite Sink
- No Wax Vinyl Floor
- Rectangle Dinette Table with Leaf and 4 Fabric Color
- Coordinated Storage Chairs
- Self-Edged Countertops with Wood Beveled Edge

- Decorative Backsplash
- Space Saver Microwave
- Dining Room Hutch *
- Adjustable Shelving *

BATH AREA

- 1-Piece Fiberglass Tub/Shower with Shower Curtain
- Residential Style Ceramic Commode
- Power Exhaust Fan with Light
- Custom Hardwood Medicine Cabinet
- Linen Cabinet *
- Vanity Top with Sink and Faucet
- GFI Protected Receptacle

BEDROOM AREA

- 60" x 75" Serta® Queen Mattress
- His and Her Lighted Wardrobes
- Chest-O-Drawers
- Night Stand with Lamp
- Beadsread
- TV Jack

ADDITIONAL FEATURES

- 56,000 BTU Upright Furnace
- 20 Gallon Electric Water Heater
- Frost Proof Exterior Faucet
- Exterior GFI Receptacle
- Porch Light

- Smoke Detector
- LP Detector
- Fire Extinguisher
- Touch Control Wall Switches
- All Drawers on Full Extension Roller Guides
- Hurricane Tie Down Straps
- Seaspray Gypsum Ceiling Board
- RVIA Seal

OPTIONAL FEATURES

- Front Trap Windows
- Dining Room Bay *
- Stainless Steel Appliances
- Electric Fireplace
- Home Theater System
- Wood Plank Linoleum Upgrade
- Premium Carpet Upgrade
- Gas/Electric Water Heaters
- 15,000 BTU Floor Ducted A.C.
- 42,000 BTU RV Furnace
- Washer/Dryer Prep *
- Electric Fireplace Insert
- Flip-up Bed with Under Bed Storage
- Bench Dinette Seating with Storage *
- Pit Group Living Room Furniture *
- Neo-Angle Shower *
- Loft Entertainment Center *
- Loft A/C *

* Denotes where available

Quailridge

Forest River, Inc. Park Model Division
28936 Phillips St.
Elkhart, IN 46514
Phone: (574) 264-7613
Fax: (574) 264-7364
www.forestriverinc.com
www.forestriveraccessories.com



Learn More
Scan this barcode using a QR Reader on your smart phone to learn more about Forest River.



A Berkshire Hathaway company.

All specifications contained herein are based on the latest product information at time of printing. Forest River reserves the right to make changes in prices, colors, materials, equipment and specifications at any time without notice and assumes no responsibility for any errors in this brochure. Photographs in this brochure may show props and optional equipment. All units are shipped F.O.B. Elkhart, IN CONSULT YOU LOCAL DEALER FOR WARRANTY INFORMATION

© 2014- Quailridge - a division of Forest River Inc.
A Berkshire Hathaway company