

PUMA CANYON CAT

by Palomino

CANYON CAT
by Palomino



Get out there and prowl

PUMA CANYON CAT

by Palomino

- Grab Handle
 - 20# LP Bottle with Cover
 - Range Hood
 - Rear Stabilizer Jacks
 - Microwave
 - Front Stabilizer Jacks
 - Tub/Shower Surround
 - Carbon Monoxide Detector
 - Z240
 - State Seal
- Express Package**
- 7 Cu. ft. Double Door Refrigerator
 - 4 Panel Refrigerator Door Insert (Available on 7 cu. ft. models only)
 - 6 Gal. Gas/Electric DSI Hot Water Heater
 - 30 lb. LP Bottles and Cover
 - Single Electric Trac Queen Bed (21TUC, 25FBC, 29FQC)
 - Glass Shower Door (Some models)
 - Outside Kitchen with Swing Arm Grill (30DBSC)
 - Mini Outside Kitchen (22RBC, 26FBC, 27RBC, 27FQC)
 - Electric Power Package (4 Electric stabilizer jacks, 3,500 lb. electric tongue jack)
 - Oven
 - 13,500 BTU Ducted A/C
 - 2 Exterior Speakers
 - Outside Shower
- Popular Options**
- 13,500 BTU Non-Duct A/C
 - 3 Cu. ft. Gas/Electric Refrigerator
 - Decorative Wall Border
 - Woodgrain Linoleum
 - Manual Awning
 - Electric Awning
 - Spare Tire and Carrier
 - Diamond Plate
 - AM/FM/CD Stereo
 - Bedspread
 - Bedroom TV Hook-up (Where available)
 - TV Antenna with Cable Hook-up (12RBC Only)
 - Double Bed IPO Booth Dinette (12RBC Only)

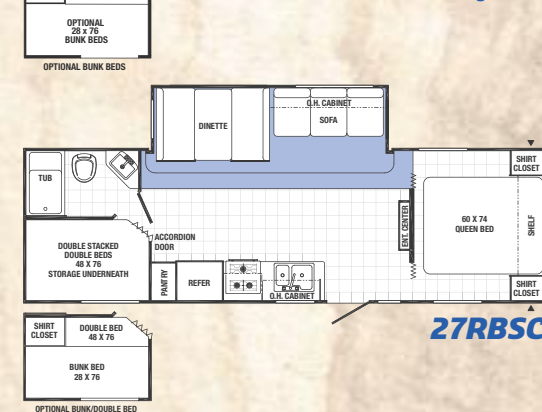
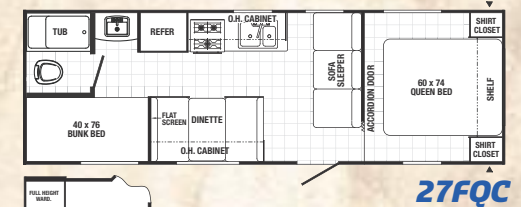
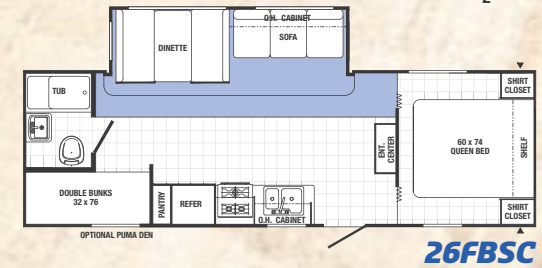
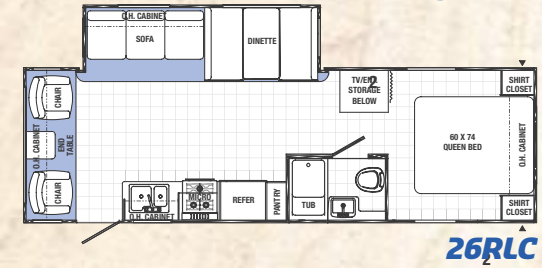
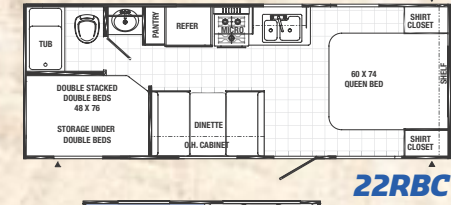
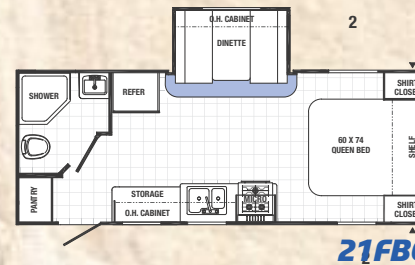
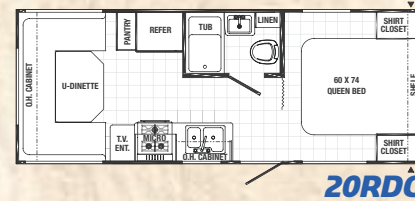
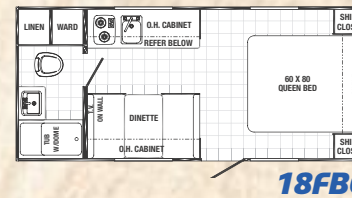
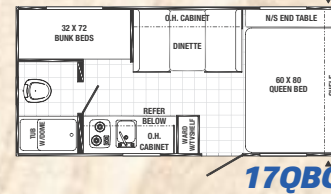
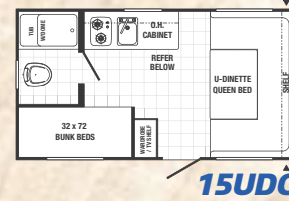
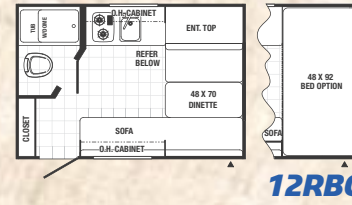
Standard Features

- 2 Burner Cook Top (Under 20')
- 4 Burner Cook Top (20' and above)
- Tinted Windows
- Mini Blinds
- Rubber Roof
- 20,000 BTU Furnace Direct Vent (Under 20')
- 30,000 BTU Furnace with In-floor Ducted Heat (20' and above)
- 4.1 Cu. ft. 110 Refrigerator
- Overhead Cabinets
- Hand Flush Toilet
- Armstrong Linoleum
- Real Wood Drawers
- Bath Skylight (20' and below)
- 6 Gal. Gas DSI Water Heater

Everything's handy in this well equipped kitchen featuring a high-rise gooseneck faucet, a double bowl 60/40 sink, and a built-in spice rack with rich looking cherry cabinetry. Shown with these options: a 7 cu. ft. refrigerator/freezer with raised panel solid hardwood fronts, and a large 22" oven with a three-burner stove.



Canyon Cat is loaded with creature comforts and is designed to offer the camping lifestyle at an affordable price. It's a lighter weight trailer than most in its class, that's not light on amenities. These quality crafted campers feature solid I-beam frames, one-piece 5/8" floor decking, one-piece rubber roofs and large fresh water tanks. Get out there and prowl with the Canyon Cat!

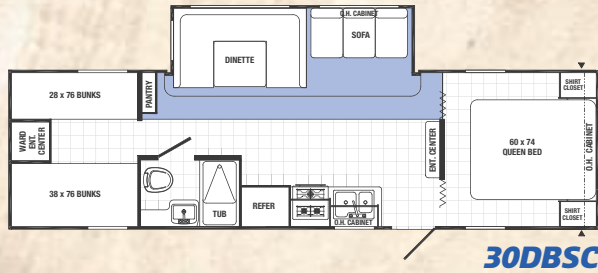


This optional 7 cu. ft. refrigerator/freezer with a large, deep storage bin and built-in LED lights is available on all Canyon Cat models.

Outside Kitchen Option with Bumper Mount Grill

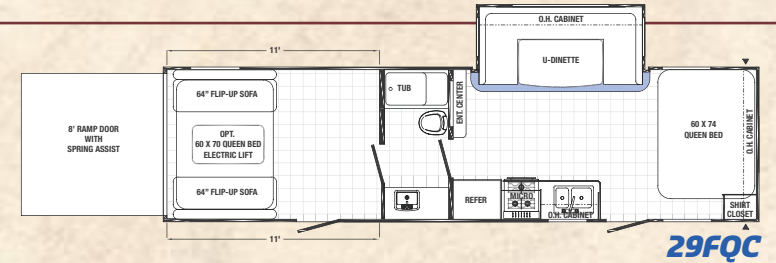
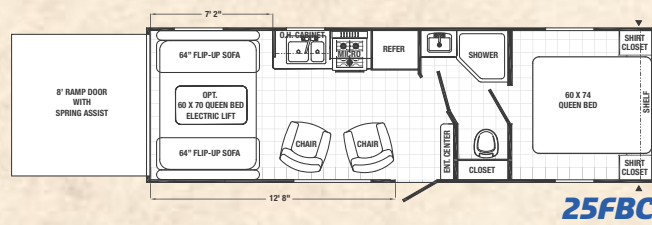
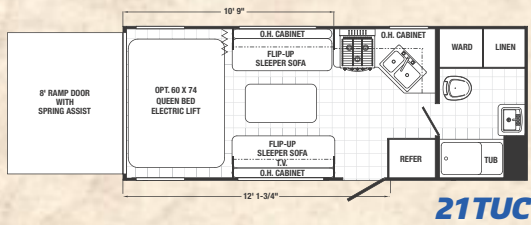
O.H. CABINET REFER **30DBSC**

PULL-OUT DRAWER ABOVE SINK REFER **22RBC 26FBC**
 PULL-OUT SINK REFER **27RBC 27FC**



30DBSC - After dining and entertaining family and friends this large 85" U-dinette converts to a comfortable sleeping area. Large vented slide room windows provide fresh air. The Comfort Series jack knife sofa also flips down into a bed. Under cushion storage and a large built-in pantry with shelves (not shown) keep storage handy.

Toy Haulers



Canyon Cat Travel Trailers

Model	12RBC	15UDC	17QBC	18FBC	20RDC	21FBC	22RBC	26RLC	26FBC	27FC	27RBC	30DBSC
Hitch Weight	337	375	391	407	426	495	467	668	548	577	704	717
Axle Weight	2475	2629	2613	2899	3606	4270	3902	4935	4566	4056	5058	5851
Dry Ship Weight	2812	3004	3004	3306	4032	4765	4369	5603	5114	4631	5762	6568
GVWR	3837	4775	4791	4750	6070	6800	6500	7668	7548	7577	7704	9118
CCC (Cargo Cap.)	1000	1754	1762	1498	2000	1997	2093	2027	2400	2946	1892	2500
Exterior Length	16'3"	18'10"	22'	22'4"	25'2"	25'3"	25'10"	30'3"	29'10"	29'2"	31'8"	33'5"
Exterior Height w/AC	10'1"	10'1"	10'1"	10'1"	10'1"	10'1"	10'1"	10'9"	10'9"	10'1"	10'9"	10'9"
Exterior Width	96"	96"	96"	96"	96"	96"	96"	96"	96"	96"	96"	96"
Fresh Water Cap. (gal)	46	46	46	46	46	46	46	46	46	46	46	46
Black Water Cap. (gal)	30	30	30	30	42	42	42	42	30	40	40	42
Grey Water Cap. (gal)	30	30	30	40	42	42	42	42	80	40	70	42
Tire Size (in)	14	15	15	15	14	14	14	15	15	15	15	15
Awning Size (ft)	8'	9'	13'	13'	13'	14'	12'	18'	16'	15'	15'	18"

Canyon Cat Toy Haulers

Model	21TUC	25FBC	29FQC
Hitch Weight	827	855	1132
Axle Weight	4288	4440	5250
Dry Ship Weight	5115	5295	6382
GVWR	7149	7855	9932
CCC (Cargo Cap.)	2000	2522	3500
Exterior Length	24'-3"	28'11"	34'0"
Exterior Height w/AC	10'-11"	10'-11"	10'-11"
Exterior Width	96"	96"	96"
Fresh Water Cap. (gal)	46	46	46
Black Water Cap. (gal)	40	40	40
Grey Water Cap. (gal)	30	30	30
Tire Size (in)	15	15	15
Awning Size (ft)	14'	18'	14'

PUMA CANYON CAT

by Palomino

Get out there and prowl with Canyon Cat!

The 30DBSC Bunkhouse has plenty of wardrobe storage and shirt closet space. Shown with quilted bunk mats, and a convenient built-in ladder.



Large exterior pass-through storage is standard on most models.



This optional outdoor kitchen keeps you where the action is. It's complete with a 4 cu. ft. refrigerator, sink, drawers, overhead storage and a bumper-mount grill (not shown).



Puma Canyon Cat by Palomino
a Division of Forest River Inc.
2551 Century Drive ■ Goshen, IN 46528
Ph: 574-642-0610 ■ www.palominoRV.com



Decor Choices



Palomino Travel Trailers and Fifth Wheels are designed to meet the varied needs of the customer. It is the responsibility of the owner to select the proper load combination for their individual needs without exceeding the listed axle weight capacities.

All illustrations and specifications contained in this literature are based on the latest product information at the time of publication. Forest River, Inc. reserves the right to make changes in prices, colors, materials, equipment and specifications at anytime, without notice, and assumes no responsibility for any error in this literature. All units are shipped F.O.B. point of manufacture.

©2014 Puma Canyon Cat by Palomino RV, a division of Forest River, Inc., a Berkshire Hathaway company. All Rights Reserved. 2/15



PRE-DELIVERY INSPECTION FACILITY

20,000 square feet of quality assurance. The bare essentials for a premium product. This state-of-the-art facility gives immediate daily feedback to production for quality assurance in every unit built.



Forest River, Inc. encourages our customers to purchase their Forest River products from a local dealership whenever possible for the following reasons:

- 1) Forest River, Inc. dealers are independently owned and operated businesses so priority service and scheduling is at their discretion and is often provided to customers that purchased their unit at that dealership.
- 2) Purchasing locally allows customers to establish meaningful relationships with a dealer, enhancing the RV experience through assistance with product questions, user tips or RV regulations for your state or country, and much more!
- 3) Canadian customers must meet requirements to bring an RV purchased out of the country to their home. These requirements may involve additional inspections and certifications, taxes and fees. Your local Canadian Dealer is a professional at meeting these requirements.
- 4) Scheduling timely warranty repairs and adjustments through a local dealership provides far greater flexibility and convenience to you, the customer!

It is the goal of Forest River, Inc. that all of our RV owners fully enjoy the RV experience and that customer satisfaction meets or exceeds their expectations!

24/7 EMERGENCY ROADSIDE ASSISTANCE

For a worry-free ownership experience

Forest River includes one year of Coach-Net RV Technical & Roadside Assistance with each RV purchase. Whether new to the RV lifestyle or an experienced RV enthusiast, Forest River owners have 24/7 access to technical, operational and emergency road service coverage throughout the US & Canada. Coach-Net's fast, dependable service is just a phone call away.

Coach-Net[®]

RV Technical & Roadside Assistance



Learn More

Scan this barcode using a QR Reader on your smart phone to learn more about Forest River.



A Berkshire Hathaway company.

FREE MEMBERSHIP
to Forest River Owners' Group

www.forestriverfrog.com

