

# Cardinal

BY FOREST RIVER

WIDE BODY FIFTH WHEELS

CARDINAL WIDE BODY FIFTH WHEELS





# Cardinal

BY FOREST RIVER

## RESIDENTIAL STYLE WIDE BODY FIFTH WHEELS

**Welcome Home** Enjoy all the comforts of home wherever you travel...from the infield to the great outdoors, living is easy in a Cardinal Fifth Wheel.



**3850RL** features a large residential size, double door pantry. There's plenty of storage space to stock up for an extended stay.

The open concept, opposing slide **3850RL** kitchen features an island with a deep, double bowl stainless steel sink, a high-rise pull-out faucet and solid surface countertops. The cooktop has a residential ceramic tile backsplash. Cardinal's rich, solid Maple hardwood cabinets are equipped with hidden hinges on the doors. LED overhead lighting throughout brightens the living spaces. The power mounted 58" LED TV retracts into the entertainment center to reveal large windows for plenty of fresh air and ambient light. An electric fireplace and ceiling fan are standard. Toffee decor is shown with the optional stainless steel package.



**3850RL**

Cardinal bedrooms are standard equipped with a 32" LED TV, king size bed, cedar lined dresser, and wardrobe with shoe storage. This model includes a contemporary textured glass bedroom door. All Cardinals are prepped for a stackable washer/dryer. Shown in Toffee decor.



Hallway wardrobe closets provide generous storage and are standard on the **3850RL**.

The **3850RL** features convenient access to the bath from the bedroom or the hallway.





## ***BMGVG IS SOMEPLACE LIKE HOME***

Get away from it all with the ultimate in convenience and luxury. With a selection of six spacious slide out floor plans, luxurious residential styling, and all the comforts of home, there's plenty of room to enjoy life's adventures in style.

*Adventurous cooks have plenty of room to maneuver in this versatile kitchen with solid surface countertops, an attractive mosaic tile backsplash, deep stainless steel sink and high rise pull-out faucet. The standard 23 cu. ft. residential refrigerator with ice maker and water dispenser is shown at left with the optional stainless steel package*

*This large, well lit bedroom in rich Maple hardwoods features big windows, a huge wardrobe with a built-in dresser and cedar lined drawers, a 32" LED TV, a king size bed and easy access overhead storage.*

*A spacious three door bedroom wardrobe offers plenty of storage, and includes washer/dryer prep. The 32" LED TV is standard.*



*Bathroom amenities include: a one-piece fiberglass residential shower with built-in seat, skylight, large medicine cabinet, solid surface countertop and five drawer hardwood vanity.*





Dine in with a great view. Large picture windows on the slide outs offer plenty of natural light. Cooks appreciate the Maple hardwood hutch in the 3825FL kitchen, shown with an optional 32" LED TV. This spacious model is standard equipped with a large 58" LED TV and electric fireplace, energy efficient LED lighting, and privacy enhancing day/night roller shades. Shown in Sangria decor with plush bonded leather upholstery.



*Cardinal*  
BY FOREST RIVER



**KEY:** A Sofa & Recliner  
B Living Area Windows and Dinette Cushions  
C Living Area Windows ● D Bedroom Fabrics

# Cardinal

BY FOREST RIVER

Looking for a fifth wheel under 35' loaded with luxury residential amenities? The **3250RL** features a 90" hide-a-bed sofa, power lift retractable TV, glass front solid Maple hardwood cabinets, slide fascia and wainscoting. Additional homestyle comforts include: LED lighting throughout, a dinette with storage under the table and chairs (two dinette seats, two folding chairs), a residential refrigerator, a convenient appliance garage, theater seating, plus day/night roller shades. Toffee decor is shown with the optional stainless steel package.

3250RL





**Versatile design fits your lifestyle**

From homestyle to theater style, Cardinal offers a broad range of residential style floor plans for luxury living.



*The 3250RL bath has a 30" x 60" shower with an adjustable shower head, skylight, large corner vanity with Maple hardwood cabinets, a solid surface countertop, and an integrated porcelain sink, plus a full size medicine cabinet.*

**3875FB**



Cardinal bedrooms are standard equipped with a 32" LED TV, king size bed, cedar lined dresser and wardrobe with shoe storage, and are prepped for a stackable washer/dryer. Shown in Haystack decor.



**3875FB** kitchen standard features include a free standing dinette, stove, convection microwave oven, a deep stainless steel double bowl sink, high-rise pull-out faucet and a large pantry with a smoked glass door. Solid surface countertops with sink and stove top covers extend work space. The optional stainless steel package ups the style factor.



*This contemporary 3455RL open concept living area features a standard power lift 58" LED TV that's cable and internet ready. An electric fireplace adds ambience. Extra deep flush floor slide rooms are framed with beautiful Maple hardwood fascia. Rich, raised panel Maple hardwood cabinetry provides abundant storage space. 3455RL is shown with these options: theater seating in bonded leather, the stainless steel appliance package and a sealed burner range. Cardinal's huge windows are accessorized with day/night roller shades. A convenient coat closet and appliance garage keeps things neat. Shown in Sangria decor.*



**3455RL**



*A king size premier inner spring mattress is a Cardinal standard. Bedrooms also include a residential headboard, bedspread, decorative pillows, a 32" LED TV, mirrored cedar lined wardrobes, a Dyson DC35 cordless vacuum and washer/dryer prep. (Dual electrical supply allows the washer/dryer to operate simultaneously.)*



## RESIDENTIAL DETAILS & CONVENIENCE FEATURES

### STANDARDS

#### INTERIOR

- Hardwood Maple Raised Panel Glazed Cabinet Doors and Drawers
- Hardwood Maple Cabinet Frames (Stiles)
- Crown Molding Cabinet Accents
- Crown Molding Ceiling Trim
- Residential Hidden Hinge Adjustable Cabinet Hardware
- Solid Wood (Baltic Birch) Drawer Boxes
- Ball Bearing, Full Extension Drawer Guides
- Dehco Trekk Wood Plank Linoleum Flooring (3 Year Cold Crack warranty)
- Residential Carpet
- Wainscoting
- Satin Nickel Plumbing Fixtures
- Solid Wood Slide-out Fascia Frame
- Decorative Solid Wood Frame Entry Door
- Solid Wood Exit Assist Handle
- Cathedral Ceilings Throughout

#### GALLEY

- LG Solid Surface Polished Counter Tops with Under Mount Sink (15 Year warranty)
- Dual Bowl "Giant" Stainless Steel Kitchen Sink
- High Rise Single Handle Pull-down Kitchen Faucet
- Solid Wood Raised Panel Refrigerator Fronts
- Stainless Steel Residential Refrigerator (3250RL, 3455RL, 3825FL, 3850RL, 3875FB)
- 8 Cu. ft. Gas/Electric Refrigerator (3030RS)
- Maxx Air Fan with Rain Sensor and Remote
- Flush Floor Galley Slides
- Coat Closet (Where applicable)
- Hardwood Drawers in Pantry

#### INTERIOR LED LIGHTING

- LED Lighting Throughout
- Indirect LED Lighting
- Decorative Ceiling Light Above Dinette
- Ceiling Fan
- Pendant Lights in Galley
- Dimmer Switch (Living area only)

#### FURNITURE/WINDOW COVERINGS

- Three Seat Leather Rear Sofa with Hide-A-Bed
- (2) Bonded Leather Swivel Recliners with Lifetime Frame Warranty
- Free Standing Dinette Table with Dual Leafs and Lift-up Storage
- (4) Residential Chairs (2) with Flip-up Storage (2) Folding
- Day/Night Roller Shades (Living area)
- Night Roller Shades (Bedroom)
- Designer Hard Valance Window Treatments (Where available)
- Designer Soffits (Where available)

#### BATHROOM

- Maxx Air Fan with Rain Sensor and Remote

- Solid Surface Polished Vanity Counter Top with Integrated Bowl (Residential Height)
- Porcelain Toilet with Foot Flush
- Radius Molded Fiberglass One-piece Shower with Seat (3850RL)
- "Mega" Fiberglass Molded Shower (3030RS, 3250RL, 3455RL, 3825FL, 3875FB)
- Shower Skylight/Dome
- Glass Shower Door
- Adjustable Shower Head
- Medicine Cabinet with Mirrored Door
- Dedicated Heat and A/C Duct

#### BEDROOM

- King Bed, Premium, Innerspring Mattress
- Solid Wood Head Board
- Designer Bedspread, Pillows and Sham
- Full Height Hanging Wardrobe
- Stackable/Combo Washer/Dryer Prep
- Washer/Dryer Dual Electrical Outlets (Operates W/D at same time)
- Shoe Caddy
- Cubby Storage
- Chest of Drawers
- Cedar Lined Closet and Drawers
- Under Bed Storage
- Solid Hardwood Slide-out Fascia Frame
- (2) Reading Lights with Individual Controls
- (2) Bed Side Power Outlets

#### APPLIANCES

- Dometic 8 cu. ft. Double Door Refrigerator (3030RS)
- Residential Refrigerator with 2000W Inverter (3250RL, 3455RL, 3825FL, 3850RL, 3875FB)
- 3-Burner, High Output Range with 22" Oven and Flush Mount Solid Surface Range Cover
- Range Cover Storage Compartment
- 30" Convection Microwave
- Dyson DC35 Cordless Vacuum
- 42K BTU LP Furnace
- Wired and Framed for Second and Third A/C
- 15K Ducted Dometic Quiet Cool A/C System
- Fireplace
- 12 Gal. Gas/Electric DSI Water Heater
- "Shurflo" On-demand High Output Water Pump (3 g/min at 55 psi)
- Dual 30 lb. Propane Bottles with Auto Switch Over
- LP Leak Detector
- Carbon Monoxide Detector

#### ELECTRONICS

- Function-remote control with Key Fob (Slides, awning, patio light, front jacks and rear jacks)
- 42" LED TV with Heavy Duty Swing Arm (Main living area: 3030RS, 3250RL)
- 58" LED TV (Main living area 3455RL, 3825FL, 3850RL, 3875FB)
- 32" LED HDTV (Bedroom)
- Furrion Theater System with Bluetooth, HDMI, DVD, AM/FM, Weather Band

- Digital TV Antenna with Signal Booster
- Cable TV Hook-ups (Main living, bedroom)
- Cable TV Hook-up (Exterior garage bulkhead)
- Satellite Prep (Roof mount)
- Exterior Flip-down Speakers in Pass-thru Storage

#### EXTERIOR

- High-gloss Colored Gel Coat Exterior (Premium quality and thickness)
- Front Cap: Molded High-gloss Gel Coat Fiberglass with Extended Turning Radius (Chamfered Front)
- Rear Cap: Molded High-gloss Gel Coat Fiberglass
- Laminated Front Bulkhead with High Gloss Gel Coat Fiberglass
- 32" X 76" Entry and Screen Door with High Gloss Gel Coat Fiberglass
- 45° Angled Skirting
- Slam Latch 1.5" Thick Insulated Doors with High Gloss Gel Coat Fiberglass
- Slide End Walls: Laminated with High Gloss Gel Coat Fiberglass
- Automotive Hehr Frameless Windows
- Hydraulic Slide Room Power
- Individual Slide Room Selector Switches
- Roof Ladder
- Dual Aluminum Wrapped Electric Power Awnings with LED Light Strip
- Entry Assist Handle (XL - folding)
- 1.5" Aluminum Belt Rail with Caps (No exposed screws)
- Roto-cast Spun Seamless Water/Waste Tanks
- Enclosed and Heated Underbelly (Forced air heat)
- Thermostatically Controlled Tank Heat Pads (12 Volt Electric) (Dual heating sources)
- Dual Roof Vents
- LED Tail Lights And Rear Running Lights
- LP Quick Disconnect

#### SLIDE ROOM SEAL/GASKET SYSTEM

- Aluminum "H" Frame Slide Room Perimeter
- Dual Neoprene Squeegee Seals
- Exterior and Interior "D" Seals
- Exterior "H" Seal

#### EXTERIOR LIGHTING

- LED Docking Lights (4 - mounted into front cap)
- Rear Cap Lighting: White Reverse and Red Running/Brake Lights
- Security Lights (2)
- Amber Patio Light
- Entry Door Auto Threshold Light
- LED Awning Lights

#### UTILITY DOCKING COMPARTMENT

- Light (12 Volt)
- Outside Shower (Hot and cold)

- Black Tank Flush System
- Fresh Water Heater Bypass Valve
- Full Coach Water Filtration System
- Winterizing Bypass System
- Protected/Insulated Pull Waste Valves
- Waste Hose Storage Tube

#### CHASSIS/FOUNDATION

- I-beam "Z" Frame Powder Coated Chassis
- Chamfered Frame Technology
- 12" I-beam Frames (10" I-beam frame 3030RS, 3250RL)
- Dual Axles (7K with 12" beams) or (6K with 10" beams)
- Dexter E-Z Lube Bearing Lubrication System and Nev-R-Adjust Brakes
- MOR/ryde 3000 Suspension System
- MOR/ryde 18K Extended Pin Box
- (8) Lug Hubs
- Aluminum Rims 16"
- Goodyear® Premium E-rated Tires
- Spare Tire (Inside storage mounted)
- Hydraulic Front Jacks
- 8" Radius Front Jack Pads
- Electric Rear Stabilizing Jacks
- Quad Steel Entry Steps (Triple Steps - 3030RS, 3250RL)
- Pinless Front Jack Legs
- Flush Floor Slide Design with Steel Ramp and Glide Bar (Main slide rooms)
- Hydraulic Slide System with 2" Steel Rams
- Hydraulic Pump Station with Manual Override

#### CONSTRUCTION

- Wide Body Construction
- Sidewalls: 2" Welded Aluminum Framed Vacuum Bonded Laminated Walls
- Roof: 5" Double Radiused Aluminum Trusses 16" on Centers
- Roof: Alpha Super Flex II TPO Roof Material
- Front Wall: Welded Aluminum Frame
- Rear Wall: Welded Aluminum Frame
- Floor: 3" Vacuum Bond Laminated with Welded Aluminum Trusses
- Bath/Bed Deck: Welded Aluminum Frame
- Slide End Walls: 2" Welded Aluminum Frame, Laminated
- Slide Roof: 2" Welded Aluminum Frame, Laminated
- Slide Floor: 1" Wood Flooring
- No Expansion Gaps

#### INSULATION

- Sidewalls: High Density Block Foam Insulation (R-9)
- Roof: Fiberglass Batten Insulation and Radiant Foil Insulation (R-38)
- Main Floor: High Density Block Foam Insulation and Radiant Foil Insulation (R-38)
- Sub floor: Honey Combed Polyurethane with Aluminum Radiant Foil Insulation and Direct Forced Air Heat

- Front Cap: Fiberglass Insulation and Radiant Foil Insulation (R-38)
- Rear Cap: Fiberglass Insulation and Radiant Foil Insulation (R-38)

#### ELECTRICAL SYSTEMS

- Centralized Command Center and Monitor Panel
- 70 AMP Converter (Progressive Dynamics)
- 50 AMP Service
- Marine Grade Detachable 50 AMP Power Cord
- 12 Volt Battery Disconnect
- Battery Prep Box (2)
- Energy Management System (Third AC prep)

### OPTIONS

#### INTERIOR

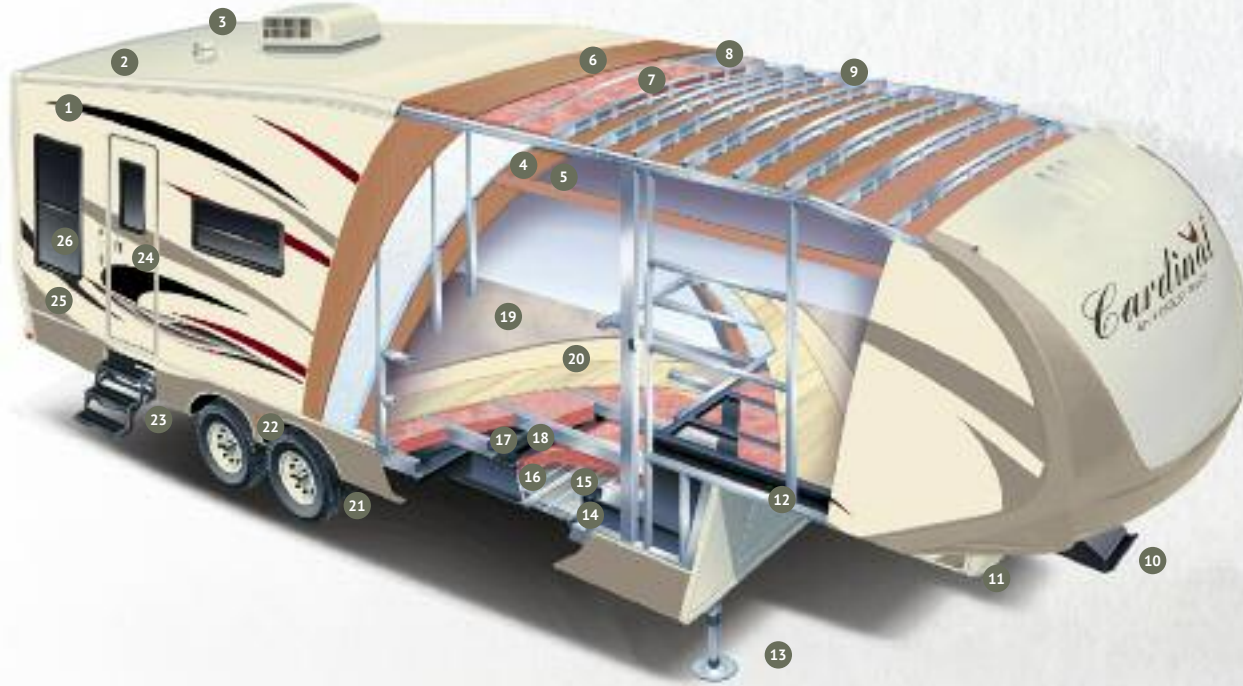
- Serta Bellagio Deluxe King Sized Pillow Top Mattress
- Queen Bed (IPO King)
- Extra Dinette Chair
- Theater Seats
- Electric Theater Seats (N/A 3825FL)
- Stainless Steel Appliance Package (Includes convection microwave)
- 18 Cu. Ft. 4-Door Gas/Electric Refrigerator (N/A 3030RS)
- Dishwasher (N/A 3030RS)
- Residential Refrigerator with 2,000W Inverter (3030RS)
- 32" Galley TV (3825FL)
- Stackable Washer/Dryer
- Fantastic Fan with Rain Sensor - Bedroom (N/A with second AC)

#### EXTERIOR

- Full-body Paint Package
- (3, 4 or 5) Slide-out Awnings
- Low Profile 13,500 BTU Quiet Cool Ducted AC in Bedroom (Standard 3825FL)
- Third Low Profile 13,500 BTU Quiet Cool Ducted AC in Living Area
- Heat Pump for 15,000 BTU AC
- Dual Pane Frameless Windows with Safety Glass
- Generator Prep
- 5.5 LP Generator (Includes prep)
- "Level Up" 6-Point One Touch Automatic Hydraulic Leveling System
- Outside Ice Maker
- Bike Hitch
- Exterior Entertainment Center with 32" LED TV
- Premium G-rated Tires
- Dexter® 7,000 lb. Axle Hydraulic Disc Brakes

# Cardinal WIDE BODY

BY FOREST RIVER



1. Deluxe Graphics Package
2. One-Piece SuperFlex II™ Roof Thermoplastic Polyolefin (TPO)
3. Two Attic Vents (Front and rear)
4. Block Foam Insulation
5. Decorative Wall Board
6. 3/8" Roof Decking (screwed)
7. Fiberglass Insulation (R-21)
8. Aluminum Radiant Foil Insulation
9. 5" Double Radiused Aluminum Trusses on 16' Centers
10. MOR/ryde Hitch
11. Chamfered Frame Extends Turning Radius
12. Welded Tubular Aluminum Studs (2" wall)
13. Extra-Wide Hydraulic Front Jacks with 8" Radius Foot Pad
14. Forced Air Heated and Enclosed Underbelly (Includes 12V heating pads)
15. Fully Enclosed Underbelly
16. 12" Powder Coated Steel I-Beam with Z-Frame (10" on 3030RS, 3250RL)
17. 3" Laminated Aluminum Floor
18. Black Polymax Moisture Barrier
19. Plush Carpet
20. Soft Foam Padding
21. Premium Goodyear® E-rated Tires
22. MOR/ryde 3000 Suspension
23. Extended Radiused Entry Step
24. 32" x 76" Entry Door with Light
25. Gel Coat Fiberglass Exterior (Sidewalls, entry doors, compartment doors, end walls of slide-outs and front and rear caps)
26. Dark tinted frameless windows



All Cardinal models are built with a radiused roof for more interior headroom.



Tuck magazines and games under this handy tabletop. Expand with dual leaves and sliding base.



Store valuables with cleverly concealed underseat storage.



This energy management system is standard on all Cardinal models.



The control center is concealed behind a bulletin board with hooks and a note caddy.



**The Nautilus controls:**

- One city water inlet – five functions:
  - "Powerfill" fresh water tank
  - Siphon fill/sanitize fresh water tank
  - Easily winterize water lines and fixtures
  - Dry camp from fresh water tank
- Pressurized city water supply
- Built-in tank flushing system
- LED pump switch for one person winterizing
- Hot/cold faucet
- Multiple coax connections



42" or 58" LED TVs are standard in living areas; 32" LED TVs are standard in bedrooms. (Most models).



Contemporary ceramic tile backsplash is easy to clean.



Slam-latch baggage doors



The remote controlled ALTA system controls the awning, patio light, slides, front hydraulic and electric rear stabilizer jacks. A hydraulic 6-point leveling system is optional.



Tow smoothly with MOR/ryde CRE/3000 compression rubber equalizer system.



Cardinal has durable gel coat, vacuum bonded, laminated fiberglass sidewalls, end walls and roof on all slide outs.



Premium Goodyear® E-rated tires are standard on all models with 8-lug, easy lube axles and aluminum alloy wheels.



Frameless deep tinted windows crank open for ventilation and easy maintenance. (Dual pane option available.)

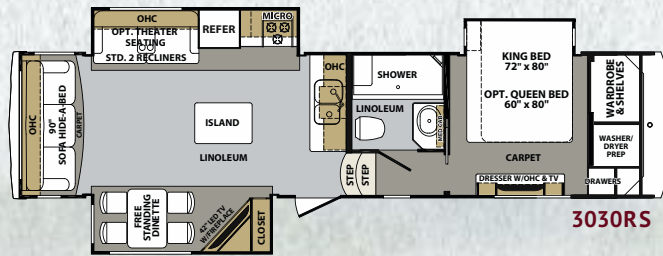


Easy access pass-thru storage houses a full size spare tire. (Underneath on competition)

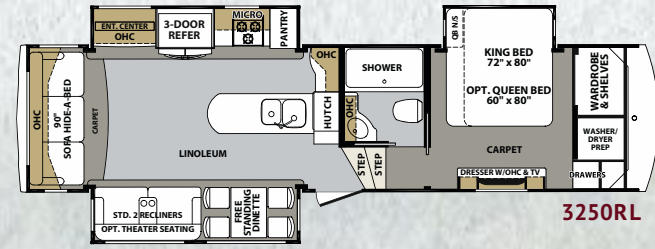
# CONSTRUCTION

## CALCULATED R-VALUES

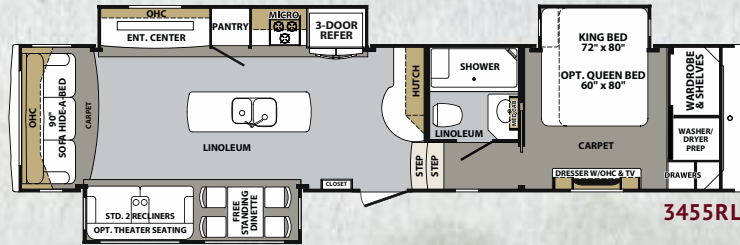
- Sidewalls: High Density Block Foam Insulation (R-9)
- Roof: Fiberglass Batten Insulation and Radiant Foil Insulation (R-38)
- Main Floor: High Density Block Foam Insulation and Radiant Foil Insulation (R-38)
- Sub floor: Honey Combed Polyurethane with Aluminum Radiant Foil Insulation and Direct Forced Air Heat
- Front Cap: Fiberglass Insulation and Radiant Foil Insulation (R-38)
- Rear Cap: Fiberglass Insulation and Radiant Foil Insulation (R-38)



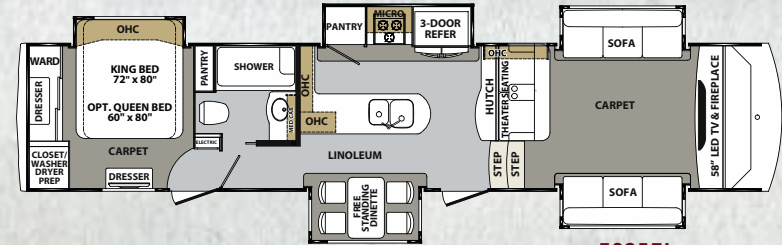
3030RS



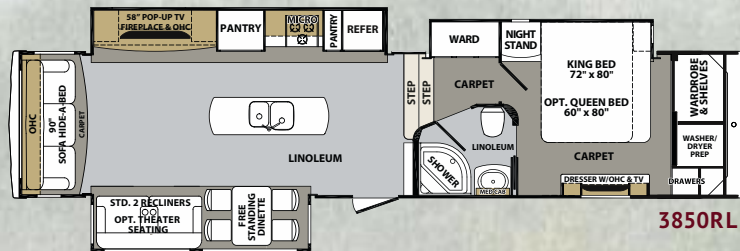
3250RL



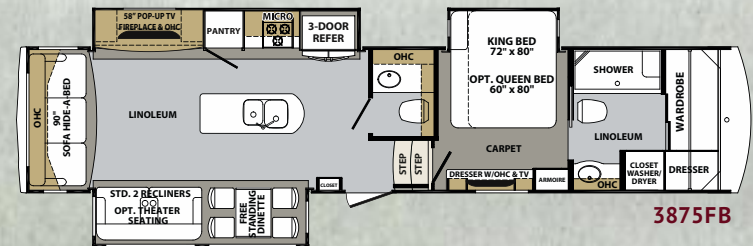
3455RL



3825FL



3850RL



3875FB



This one-piece mega shower has a built-in seat, textured glass door and skylight. The Maple hardwood vanity features a solid surface countertop with an integrated porcelain sink. (N/A 3850RL)



A bedroom dresser with overhead cabinets and a 32" LED TV is standard on most models. (N/A 3825FL)

WIDE BODY	3030RS	3250RL	3455RL	3825FL	3850RL	3875FB
Length (Center of Pin to Rear of Cap)	35' - 9"	34' - 11"	40' - 8"	41' - 7"	39' - 6"	40' - 6"
Shipping Weight	12010	12142	13936	13978	13563	13975
UVW	12069	12201	13995	14037	13622	14034
Hitch Weight	2640	2252	2655	2452	2575	2490
GAWR	12000	12000	13680	13680	13680	13680
GVWR	14640	14252	16335	16132	16255	16170
Cargo Carrying Capacity (CCC)	2571	2051	2340	2095	2633	2136
Exterior Height	13' 6"	13' 6"	13' 6"	13' 6"	13' 6"	13' 6"
Exterior Width	100"	100"	100"	100"	100"	100"
Interior Height (bedroom)	81"	81"	81"	105"	81"	81"
Interior Height (living area)	105"	105"	105"	81"	105"	105"
Tire Size	ST235/80R16E	ST235/80R16E	ST235/80R16E	ST235/80R16E	ST235/80R16E	ST235/80R16E
Brake Size	12"	12"	12"	12"	12"	12"
Fresh Water	64 gal.	64 gal.	64 gal.	64 gal.	64 gal.	64 gal.
Waste Water	120 gal.	120 gal.	120 gal.	120 gal.	120 gal.	140 gal.
Water Heater	12 gal.	12 gal.	12 gal.	12 gal.	12 gal.	12 gal.
Furnace	42000 BTU	42000 BTU	42000 BTU	42000 BTU	42000 BTU	42000 BTU
Patio Awning	17'	14'	19'	6' - 6" & 14'	19'	18'
Exterior Storage (cu. ft.)	113	113	150	107	150	150

**GVWR (Gross Vehicle Weight Rating)** - is the maximum permissible weight of the unit when fully loaded. It includes all weights, inclusive of all fluids, cargo, optional equipment and accessories. For safety and product performance do NOT exceed the GVWR.

**GAWR (Gross Axle Weight Rating)** - is the maximum permissible weight, including cargo, fluids, optional equipment and accessories that can be safely supported by a combination of all axles.

**UVW (Unloaded Vehicle Weight)\*** - is the typical weight of the unit as manufactured at the factory. It includes all weight at the unit's axle(s) and tongue or pin and LP Gas. The UVW does not include cargo, fresh potable water, additional optional equipment or dealer installed accessories.

**CCC (Cargo Carrying Capacity)\*\*** - is the amount of weight available for fresh potable water, cargo, additional optional equipment and accessories. CCC is equal to GVWR minus UVW. Available CCC should accommodate fresh potable water (8.3 lbs. per gallon). Before filling the fresh water tank, empty the black and gray tanks to provide for more cargo capacity.

\*Estimated Average based on standard build optional equipment.

\*\*Estimated average based on standard build optional equipment.

Each Forest River RV is weighed at the manufacturing facility prior to shipping. A label identifying the unloaded vehicle weight of the actual unit and the cargo carrying capacity is applied to every Forest River RV prior to leaving our facilities.

The load capacity of your unit is designated by weight, not by volume, so you cannot necessarily use all available space when loading your unit.

# Cardinal

BY FOREST RIVER

EVREPINP NORINMQ

Cardinal is offered in a selection of five appealing exteriors.



STANDARD GRAPHICS



FULL BODY PAINT CRIMSON GOLD



FULL BODY PAINT GARNET NIGHT



FULL BODY PAINT MOCHA PEARL



FULL BODY PAINT SILVER STAR



**Cardinal**  
58277 State Road 19 South • Elkhart, IN 46517  
(574) 296-7700 • [www.forestriverinc.com/cardinal](http://www.forestriverinc.com/cardinal)  
[www.forestriveraccessories.com](http://www.forestriveraccessories.com)

Wkpm CAPDIMAK DbYhbm

All information contained in this brochure is believed to be accurate at the time of publication. However, during the model year, it may be necessary to make revisions and Forest River, Inc., reserves the right to make all such changes without notice, including prices, colors, materials, equipment and specifications as well as the addition of new models and the discontinuance of models shown in this brochure. Therefore, please consult with your Forest River dealer and confirm the existence of any materials, design or specifications that are material to your purchase decision. ©2016 Cardinal, a Division of Forest River, Inc., a Berkshire Hathaway company. All rights reserved. 3/16



## PRE-DELIVERY INSPECTION FACILITY

20,000 square feet of quality assurance. The bare essentials for a premium product. This state-of-the-art facility gives immediate daily feedback to production for quality assurance in every unit built.



Forest River, Inc. encourages our customers to purchase their Forest River products from a local dealership whenever possible for the following reasons:

- 1) Forest River, Inc. dealers are independently owned and operated businesses so priority service and scheduling is at their discretion and is often provided to customers that purchased their unit at that dealership.
- 2) Purchasing locally allows customers to establish meaningful relationships with a dealer, enhancing the RV experience through assistance with product questions, user tips or RV regulations for your state or country, and much more!
- 3) Canadian customers must meet requirements to bring an RV purchased out of the country to their home. These requirements may involve additional inspections and certifications, taxes and fees. Your local Canadian Dealer is a professional at meeting these requirements.
- 4) Scheduling timely warranty repairs and adjustments through a local dealership provides far greater flexibility and convenience to you, the customer!

It is the goal of Forest River, Inc. that all of our RV owners fully enjoy the RV experience and that customer satisfaction meets or exceeds their expectations!

## 24/7 EMERGENCY ROADSIDE ASSISTANCE

For a worry-free ownership experience Forest River includes one year of Coach-Net RV Technical & Roadside Assistance with each RV purchase. Whether new to the RV lifestyle or an experienced RV enthusiast, Forest River owners have 24/7 access to technical, operational and emergency road service coverage throughout the US & Canada. Coach-Net's fast, dependable service is just a phone call away.

# Coach-Net®

RV Technical & Roadside Assistance



**Learn More**  
Scan this barcode using a QR Reader on your smart phone to learn more about Forest River.



A Berkshire Hathaway company.

**FREE MEMBERSHIP**  
to Forest River Owners' Group

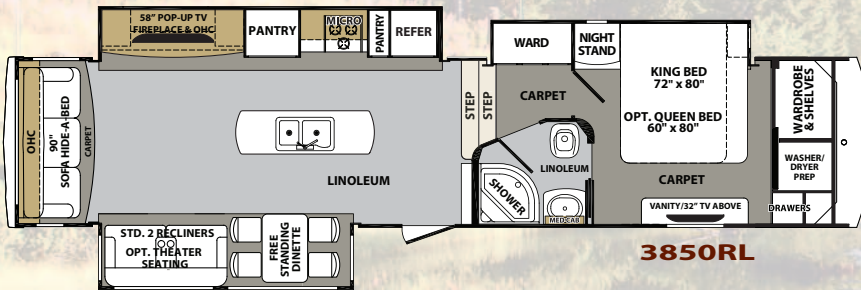
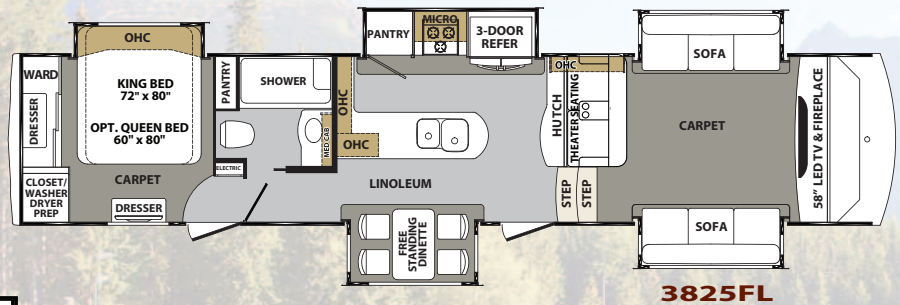
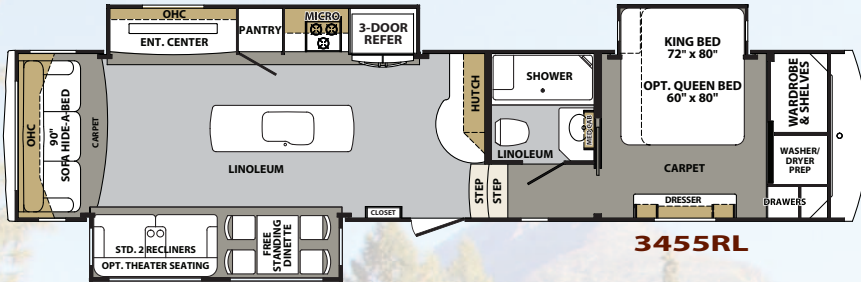
[www.forestriverfrog.com](http://www.forestriverfrog.com)



# Cardinal

BY FOREST RIVER

## Estate PACKAGE



### STANDARDS INCLUDE:

- Manual Power Cord Reel
- 2 Burner Induction Stove Top
- Furrion Double Drawer Dishwasher
- 3 Dometic Quiet Cool Air Conditioners
- Serta Bellagio Opulenza King Super Pillow Top Mattress
- Auto Drawer Glides in Living Area
- Keyless Entry
- Dexter 8000 lb. Axles
- G-Rated Tires
- Mor Ryde 4000 Suspension
- Lighted Kitchen Backsplash
- Stainless Steel Convection Microwave
- High End Spring High Rise Kitchen Faucet
- New High End Full Body Paint



**GUN METAL**



**PINOT GRIGIO**

Cardinal Division • 58277 State Road 19 South  
Elkhart, IN 46517 • (574) 296-7700  
[www.forestriverinc.com/cardinal](http://www.forestriverinc.com/cardinal)  
[www.forestriveraccessories.com](http://www.forestriveraccessories.com)



All information contained in this brochure is believed to be accurate at the time of publication. However, during the model year, it may be necessary to make revisions and Forest River, Inc., reserves the right to make all such changes without notice, including prices, colors, materials, equipment and specifications as well as the addition of new models and the discontinuance of models shown in this brochure. Therefore, please consult with your Forest River dealer and confirm the existence of any materials, design or specifications that are material to your purchase decision.  
©2015 Cardinal, a Division of Forest River, Inc., a Berkshire Hathaway company. All rights reserved. 1/16