

Springdale



**A BETTER WAY
TO CAMP**

Summerland



TRAVEL TRAILERS & FIFTH WHEELS



**Keystone RV
Company**

**EASTERN
EDITION**



**Keystone RV
Company**

When Cole Davis founded Keystone RV in 1986 his vision was clear: Build a quality RV loaded with features priced thousands less than other RVs on the market. To accomplish his goal, Cole would recruit and build a strong team, focus on keeping overhead low, and empower the people closest to the customer to make decisions. Within a few short months after opening the doors, Keystone produced its very first camper. Delivering big on quality, features and value, the public fell in love and a star was born.

As customers appetite skyrocketed, new Keystone models were added to satisfy growing customer demand. Along with this tremendous growth came the need for expanded production. To meet this need, more manufacturing plants were built and staffed. By the beginning of 2000, Keystone was leading the industry in fifth wheel and trailer sales. Today, Keystone RV Company has grown to encompass over 1 million square feet of manufacturing space with facilities in Goshen, Indiana and Pendleton, Oregon. While Keystone is no longer the small "start up" we once were, our mission has remained true to Cole's vision—"Do the job right and make sure we deliver a quality product every time."

Our Story

An original Keystone RV brand 16 years in the making... SPRINGDALE is a benchmark of success in the RV industry as well as a legacy for our company Keystone RV. Having made countless camping adventures even better... The SPRINGDALE brand of travel trailers has exceeded expectations and helped create memories for our customers that will last for many years to come.

At Keystone RV, we pride ourselves on unmatched quality control procedures and maintain customer service that is second to none. With our 16 year proven track record... SPRINGDALE travel trailers are constructed with our customers in mind. This quality craftsmanship and attention to detail ensures our customers a piece of mind that they will continue to get the most out of their camping season.

With SPRINGDALE, we understand that our customer's hard earned money should go just as far as their adventures can take them. That is why we believe in the importance of delivering the best floor plans, best features, best look and best quality... period. Once on the road to adventure, our customers will see how camping in their SPRINGDALE travel trailer "is just plain better"! Unmatched in its design, SPRINGDALE offers numerous features you can't find on any of our competitors, as well as more standard options and amenities than any travel trailer in its class. From our interior vaulted ceiling, 14' Super Slide Room to the "Do More" dinette table, we have remained focused on providing great value and convenient features that will always make camping in your SPRINGDALE travel trailer... A Better Way To Camp!



SPRINGDALE TRAVEL TRAILERS
PGS. 4-9

SPRINGDALE FIFTH WHEELS
PGS. 10-11

SUMMERLAND TRAVEL TRAILERS & SINGLE AXLES
PGS. 12-14

SPRINGDALE/SUMMERLAND DECOR OPTIONS

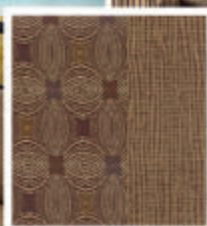
38FL SHOWN IN MOREL DECOR



MOREL DECOR



SANDSTONE DECOR



SEA MIST DECOR



38FL SHOWN IN MOREL DECOR

311RE SHOWN IN SEA MIST DECOR



SPRINGDALE TRAVEL TRAILERS



311RE LIVING ROOM w/ TRI-FOLD SLEEPER SOFA



311RE BATHROOM


Springdale
VAULTED CEILING
— RAISING THE BAR ON INNOVATION —
6'10"

Springdale

TRAVEL TRAILER FLOORPLANS



225RB

WEIGHT: 5658

LENGTH: 26' 3"



266RL

WEIGHT: 6391

LENGTH: 29' 6"



271RL

WEIGHT: 6780

LENGTH: 31' 10"



282BH

WEIGHT: 6929

LENGTH: 32' 1"



287RB

WEIGHT: 7606

LENGTH: 32' 7"



293RK

WEIGHT: 7052

LENGTH: 33' 3"



294BH

WEIGHT: 7069

LENGTH: 33' 5"



297BH

WEIGHT: 7241

LENGTH: 32' 0"



303BH

WEIGHT: 7998

LENGTH: 35' 0"



310BH

WEIGHT: 7882

LENGTH: 35' 11"



311RE

WEIGHT: 8324

LENGTH: 35' 7"



330KI

WEIGHT: 9102

LENGTH: 37' 0"

LIMITED AVAILABILITY
ADVENTURE PACKAGE



OUTDOOR TV BRACKET W/TV HOOKUP



CENTRAL VACUUM



SOUND BAR ENTERTAINMENT CENTER



EXTRA LARGE PASS THRU STORAGE DOOR



HEATED UNDERBELLY



BLACK TANK FLUSH



INTEGRATED AWNING SPEAKERS W/ LED LIGHT STRIP

SPRINGDALE TOP SELLING FEATURES



PLEATED NIGHT SHADES



29" HDTV



DIGITAL CHARGING STATION



FRICTION HINGE DOOR



WIDE STANCE AXLES



FULL EXTENSION BALL BEARING ROLLER GUIDES



EXTRA LARGE ENTRY HANDLE



ALUMINUM WHEELS



PORCELAIN FOOT FLUSH TOILET



TRI-FOLD SLEEPER SOFA



VAULTED CEILING



"DO-MORE" DINETTE TABLE



FULL BODY GRAPHICS



UPGRADED 7 CU. FT. REFER W/LED LIGHT

- | | | |
|---|---|---|
| 1 Continuous Steel I-Beam Powder Coated Frame | 10 Electric Awning | 20 Radius Skirting |
| 2 Walkable Crowned Roof | 11 Residential Batten Insulation Throughout | 21 E-Z Lube Axles |
| 3 Hurricane Strap Reinforced Structure | 12 Dual Battery Storage Tray | 22 0.24 and 0.30 Aluminum Baked Enamel Siding |
| 4 Oversized Pass Through Storage | 13 XL Entry Assist Handle | 23 Black Framed, Tinted Safety Glass Windows |
| 5 Diamond Plate Front Protector | 14 5/8" Seamless Floor Decking | 24 Rain Gutter with Extended Down Spouts |
| 6 One Piece Alpha-Ply Roof | 15 Aluminum Wheels (Opt.) | 25 Fender Skirts |
| 7 3/8" Roof Decking | 16 Triple Stage Slide Room Seals | 26 13,500 BTU Ducted Air Conditioner (Opt. 15K) |
| 8 Dual 30 Lb. LP Bottles | 17 Radius Triple Entry Steps | 27 Bumper Sewer Hose Storage |
| 9 Crowned Slide Box | 18 2x3 Floor Joists 12" on Center | 28 Exterior TV Mount (Adventure Package) |
| | 19 Wide Stance Axles | 29 [4] Stabilizer Jacks (Opt.) |
| | | 30 Electric Tongue Jack (Opt.) |



E-Z LUBE AXLES



ELECTRIC BRAKES



- 30K BTU FURNACE
- ENCLOSED UNDERBELLY
- DEDICATED AIR DUCT FORCING HEAT DIRECTLY FROM FURNACE INTO THE UNDERBELLY

Springdale

FIFTH WHEEL FLOORPLANS



253FWRE

WEIGHT: 8120

LENGTH: 31' 11"



280FWRK

WEIGHT: 7380

LENGTH: 31' 11"



285FWRL

WEIGHT: 7600

LENGTH: 32' 5"



286FWBH

WEIGHT: 7727

LENGTH: 32' 8"



320FWFB

WEIGHT: 8009

LENGTH: 34' 5"



CONNECT WITH KEYSTONE RV AND STAY UP TO DATE WITH PRODUCT NEWS AND INFORMATION

VISIT OUR WEBSITE TO VIEW INTERIOR PHOTOS, 360 VIRTUAL TOURS AND MUCH MORE.



FREE STANDING DINETTE

*AVAILABLE IN ALL SPRINGDALE TT'S AND FW'S

MODEL	253FWRE	280FWRK	285FWRL	286FWBH	320FWFB
SHIPPING WEIGHT	8120	7380	7600	7727	8009
CARRYING CAPACITY	1840	2850	2465	2463	2556
HITCH WEIGHT	1160	1430	1265	1390	1765
EXTERIOR LENGTH*	31' 11"	31' 11"	32' 5"	32' 8"	34' 5"
EXTERIOR HEIGHT	11' 10"	11' 10"	11' 10"	11' 4"	11' 11"
FRESH WATER	52	52	49	55	52
WASTE WATER	42	42	42	42	42
GRAY WATER	74	74	76	76	74
LPG CAPACITY LB.	60	60	60	60	60

CORRECT TRACK ALIGNMENT SYSTEM:

- With Correct Track, the trailer or fifth wheel tows with the tow vehicle, not against it
- Tires run smoother and cooler
- Improves fuel economy
- Helps preserve the life of the RV's equipment, appliances, etc
- Dramatically improves tire life



286FWBH SHOWN IN SANDSTONE DECOR



286FWBH SHOWN IN SANDSTONE DECOR

286FWBH BUNKS



Springdale is a leader not only in Travel Trailers, but 5th wheels as well. If you are a camper in your early stages and looking for a little more room, or a more experienced traveler and ready for something a little larger, Springdale has you covered. Springdale 5th wheels are equipped with everything you need for a weekend getaway or an extended excursion. With Springdale you will find form and function come together whether you're looking for a family unit with bunks or something just for 2. Oversized windows, full size bathrooms, significant storage inside and out, enhanced colored exterior and many other standards and options make **Springdale 5th wheels a true leader in camping and value!**

Summerland

TRAVEL TRAILER FLOORPLANS



1890FL

WEIGHT: 4147

LENGTH: 23' 7"



2020QB

WEIGHT: 4291

LENGTH: 24' 10"



2400BH

WEIGHT: 5711

LENGTH: 24' 9"



2570RL

WEIGHT: 5954

LENGTH: 29' 8"



2600TB

WEIGHT: 4829

LENGTH: 29' 10"



2670BHGS

WEIGHT: 5827

LENGTH: 28' 11"



2820BHGS

WEIGHT: 6484

LENGTH: 32' 1"



2980BHGS

WEIGHT: 6308

LENGTH: 32' 7"



3030BHGS

WEIGHT: 7572

LENGTH: 34' 11"

MODEL	1890FL	2020QB	2400BH	2570RL	2600TB	2670BHGS	2820BHGS	2980BHGS	3030BHGS
SHIPPING WEIGHT	4147	4291	5711	5954	4829	5827	6484	6408	7572
CARRYING CAPACITY	2263	2209	1999	1661	2716	1818	2116	3107	2118
HITCH WEIGHT	410	515	710	615	545	645	690	715	890
EXTERIOR LENGTH*	23' 7"	24' 10"	24' 9"	29' 8"	29' 10"	28' 11"	32' 1"	32' 7"	34' 11"
EXTERIOR HEIGHT	10' 6"	10' 6"	10' 6"	10' 6"	10' 6"	10' 11"	11' 3"	10' 11"	10' 11"
FRESH WATER	52	52	49	52	52	52	52	52	52
WASTE WATER	32	34	42	42	42	32	32	32	32
GRAY WATER	42	42	42	34	34	42	84	42	42
LPG CAPACITY LB.	40	40	40	40	40	40	40	40	40



E-COATED WHEELS WITH E-Z LUBE AXLES

NEW

3030BH6S IN SEA MIST DECOR



3030BH6S IN SEA MIST DECOR



3030BH6S BUNKROOM



2400BH SHOWN IN SEA MIST DECOR



2400BH BUNKS



Summerland Mini

SINGLE AXLE TRAVEL TRAILER FLOORPLANS

NEW



1400

WEIGHT: 2722

LENGTH: 17' 1"



1700

WEIGHT: 3120

LENGTH: 21' 5"



1750

WEIGHT: TBD

LENGTH: 20' 10"



1600

WEIGHT: 2815

LENGTH: 18' 3"



1800

WEIGHT: 3195

LENGTH: 21' 5"

MODEL	1400FD	1600BH	1700FL	1750RD	1800BH
SHIPPING WEIGHT	2722	2815	3120	TBD	3195
CARRYING CAPACITY	1133	1065	780	TBD	745
HITCH WEIGHT	355	380	400	TBD	440
EXTERIOR LENGTH*	17' 1"	18' 3"	21' 5"	20' 10"	21' 5"
EXTERIOR HEIGHT	10' 6"	10' 6"	10' 6"	10' 6"	10' 6"
FRESH WATER	27	27	27	27	27
WASTE WATER	27	27	27	27	27
GRAY WATER	27	27	27	27	27
LPG CAPACITY LB.	20	20	20	20	20

1800BH SHOWN IN MOREL DECOR



1800BH SHOWN IN MOREL DECOR



STANDARDS & OPTIONS

	SPRINGDALE TT	SPRINGDALE FW	SUMMERLAND TT	MINI		SPRINGDALE TT	SPRINGDALE FW	SUMMERLAND TT	MINI		SPRINGDALE TT	SPRINGDALE FW	SUMMERLAND TT	MINI
EXTERIOR														
» Laminated Fiberglass Sidewalls	-	S	-	-	» Large Medicine Cabinet	S	S	S	S	» 82" Vaulted Ceiling	S	-	-	-
» Electric Adjustable Front Landing Gear	-	S	-	-	» Pleated Night Shades in Living Area	S	S	-	-	» Tub Surround	S	S	0	-
» Diamond Plate	S	-	-	-	» Full Strutted Storage under Master Bed	S	S	-	-	» Porcelain Foot Flush Toilet	S	S	S	-
» Adjustable Power Awning	S	S	0	-	» Nightstand w/Drawer in Bedroom	S	-	-	-	» RG6 Cable and Satellite Wiring	S	S	0	S
» Manual Patio awning	-	-	S	S	» Nightstand	S	S	S	-	» 2x3 Floor Construction 12" OC w/5/8th Decking	S	S	S	S
» Outside 110 receptacle	S	S	S	S	» 29" TV (39" on some models)	0	0	0	-	» 16" on Center Raised Roof Truss System	S	S	S	S
» Aluminum Wheels	0	0	0	-	» 2 Interior Speakers	-	-	S	S	» 4 1/2" Crowned Roof	S	S	S	S
» XL Entry Assist Handle	S	S	-	-	» AM/FM CD w/MP3 Stereo	-	-	S	S	» 16" on Center Side Walls	S	S	S	S
» Arctic Package	S	S	-	-	» AM/FM Bluetooth Soundbar Ent. System	S	S	-	-	» R-7 Insulation-Floor, Roof, Walls	S	S	S	S
» Powder Coated I-Beam Frame	S	S	S	S	» Residential Microwave	S	S	S	S	» SUMMER PACKAGE *	-	-	0	-
» Spread Axle (Models w/Slides)	S	S	S	-	» Monitor Panel	S	S	S	S	SAFETY				
» Easy Ultralube Axles	S	S	S	S	» 7 Cu. Ft. Refrigerator	S	S	-	-	» Safety Chains	S	S	S	S
» Full Length Outriggers on Frame	S	S	S	S	» 6 Cu. Ft. Refrigerator	-	-	S	-	» Break Away Switch	S	S	S	S
» Dual Battery Rack	S	S	S	-	» Residential Refrigerator (38BH, 38FL, 38FQ only)	S	-	-	-	» Electric Brakes	S	S	S	S
» Two 30 lb. LP Bottles	S	S	S	-	» 3 Cu. Ft. Gas/Electric Refer	-	-	-	S	» Carbon Monoxide Detector	S	S	S	S
» 2 Exterior Speakers	S	S	S	S	» Ball Bearing Drawer Guides	S	S	S	S	» L.P. Gas Detector	S	S	S	S
» TV Antenna with Booster	S	S	S	S	» Reversible Dinette Cushions	S	S	S	S	» Smoke Detector	S	S	S	S
» Oversized Pass Thru Storage	S	S	S	S	» High Rise Kitchen Faucet	S	S	S	S	» Fire Extinguisher	S	S	S	S
» Hurricane Straps Reinforced Structure	S	S	S	S	» High Impact Acrylic Sink	S	S	S	S	» GFI Electrical Outlets	S	S	S	S
» Four heavy duty stabilizer jacks	0	-	0	0	» 18" Oven w/3 Burner Cooktop	S	S	S	-	» Tinted Safety Glass	S	S	S	S
» Two Heavy Duty Stabilizer Jacks	-	S	-	S	» 2 Burner Cooktop	-	-	-	S	» SUMMERLAND SUMMER PACKAGE *				
» Radial Tires	S	S	S	S	» Freestanding Dinette	0	0	-	-	· Outdoor Shower				
» Cambered chassis	S	S	S	S	» "Do More Dinette" Table	S	S	-	-	· 6 Gal. Gas DSI Water Heater				
» 96" Exterior width	S	S	S	S	» 12 Volt 55 Amp Converter	S	S	S	-	· RG6 Cable and Satellite Wiring				
» Exterior Shower	S	S	0	-	» 15,000 BTU Air Conditioner	0	0	0	-	· 2 - 30# LP Tanks w/Cover				
» Spare Tire and Carrier	0	0	0	0	» 13,500 BTU Air Conditioner	S	S	S	0	· Tub Surround				
» E-Z Open Entry Step	S	S	S	S	» 8K BTU Air Conditioner	-	-	-	S					
» 50 Amp Service w/Detachable Cord (Select Models)	S	S	-	-	» Forced Air DSI 30K BTU Furnace w/Thermostat (Ducted most models)	S	S	S	-					
INTERIOR														
» Mini Blinds	-	-	S	S	» 20K BTU Furnace	-	-	-	S					
» Tri-Fold Sleeper Sofa	0	0	-	-	» 6 Gal. Gas/Electric DSI Water Heater	S	S	-	-					
» Jackknife Sofa Bed	-	-	S	S	» Skylight Over Tub/Shower	S	S	-	-					
					» Flex Pex Tubing with 10 Year Warranty	S	S	S	S					

SPRINGDALE TT = SPRINGDALE TRAVEL TRAILERS
 SPRINGDALE FW = SPRINGDALE FIFTH WHEELS
 SUMMERLAND TT = SUMMERLAND TRAVEL TRAILERS
 MINI = SUMMERLAND SINGLE AXLE TRAVEL TRAILERS

S STANDARD 0 OPTIONAL - NOT AVAILABLE

Standard features and options are subject to change without notice.

A BETTER WAY TO CAMP

Springdale Summerland



Annual RVDA DEALER SATISFACTION INDEX



SPRINGDALE HAS EARNED THE DSI AWARD

THE DSI (DEALER SATISFACTION INDEX) AWARD RATES THE LEVEL OF SATISFACTION THE DEALERS HAVE IN A MANUFACTURER. IT RATES MANUFACTURERS IN MANY AREAS SUCH AS: PRODUCT DESIGN, PRODUCT RELIABILITY & QUALITY, WARRANTY SUPPORT, AND PARTS SUPPORT.

BUY LOCALLY

PURCHASING YOUR RV LOCALLY

It's up to you where you purchase your new Springdale or Summerland, but may we suggest your local dealer? Not only does it help your local economy and provide jobs, but it will also give you an opportunity to develop a service relationship with someone that will come to know you and your coach. Congratulations on finding the best built, best equipped and best value in the industry. Happy travels!

YOUR LOCAL DEALER IS:

MARCH 2015



Keystone RV Company

WWW.KEYSTONERV.COM
574.535.2100 • 2642 HACKBERRY DRIVE
P.O. BOX 2000 • COSHEN, IN 46527



Go RVing.

DISCLAIMER: Product information is as accurate as possible as of the date of publication of this brochure. All features, floor plans, and specifications in this brochure are subject to change without notice. Please also consult Keystone's web site at www.keystonerv.com for more current product information and specifications. Tow Vehicle Disclaimer: CAUTION: Owners of Keystone recreational vehicles are solely responsible for the selection and proper use of tow vehicles. All customers should consult with a motor vehicle manufacturer or their dealer concerning the purchase and use of suitable tow vehicles for Keystone products. Keystone disclaims any liability or damages suffered as a result of the selection, operation, use or misuse of a tow vehicle. KEYSTONE'S LIMITED WARRANTY DOES NOT COVER DAMAGE TO THE RECREATIONAL VEHICLE OR THE TOW VEHICLE AS A RESULT OF THE SELECTION, OPERATION, USE OR MISUSE OF THE TOW VEHICLE. *Length is defined as the distance from the centerline of hitch pin/coupler to rear bumper of trailer. 03/15

A BETTER WAY TO CAMP | WWW.KEYSTONERV.COM/SPRINGDALE