

KODIAK

TRAVEL TRAILERS, EXPRESS, EXPANDABLES & TOY HAULER

KODIAK



Model
300BHSL

TRAVEL TRAILERS, EXPRESS, EXPANDABLES & TOY HAULER

KODIAK





291RESL, shown in Sable Decor



291RESL, Dinette & Chair Slider room



291RESL, Tri-Fold Sofa

Kodiak is the leader in ultra-lite technology. With units light enough to be towed by most SUV's minivans, crossovers and light trucks, we're sure to have the model that best fits your family's needs.

But, just because Kodiak is an ultra-lite doesn't mean it's light on storage or features. With spacious countertops, well-designed cabinets and oversized pass-thru exterior storage compartments, it's easy to take everything along on your next adventure.



Bear Cage Construction

ROOF - 5" THICK TRUSS STYLE ALUMINUM FRAME CONSTRUCTION

- 1 TPO Roof with 12 Year Manufacturer's Warranty
- 2 Luan Wood Backer
- 3 Tubular Aluminum Welded Framed Roof
- 4 High Density Structural Foam
- 5 Decorative Ceiling Finish
- 6 13,500 BTU Roof Ducted A/C
- 7 A/C Ducting System with Taped Seams

FLOOR - FULLY LAMINATED WELDED ALUMINUM FRAME CONSTRUCTION

- 1 Residential Carpeting in Slide Room
- 2 Beauflor Flooring - 10 Year Warranty
- 3 Dual Layers of Floor Decking
- 4 Tubular Welded Aluminum Framed Floor
- 5 High Density Structural Foam
- 6 Polypropylene Waterproof Vapor Barrier

CHASSIS - STEEL I-BEAM POWDER COATED CHASSIS

- 1 Folding Entry Steps
- 2 Four Corner Stabilizer Jacks
- 3 Large Heated Tanks Mounted Below Floor
- 4 "Polar Package" Enclosed and Heated Underbelly (N/A Express)
- 5 Radial Tires
- 6 Easy-Lube Hubs
- 7 LP Tanks with ABS Cover

WALLS - FULLY LAMINATED, WELDED ALUMINUM FRAME CONSTRUCTION

- 1 High Gloss Fiberglass Exterior
- 2 Luan Wood Backer
- 3 Tubular Aluminum Welded Frame Walls
- 4 High Density Structural Foam Insulation
- 5 Decorative Wall Finish
- 6 Tinted Safety Glass Windows
- 7 Insulated Baggage Doors with Slam Latches (N/A Express)
- 8 TPO Fender Skirts
- 9 XL-Folding Entry Assist Handle (N/A Express)
- 10 Aerodynamic Front Profile for Better Fuel Economy
- 11 Diamond Plate Rock Guard
- 12 Adjustable Power Awning

Ultra-Lite Design Means Better Fuel Economy



Aerodynamic Profile

Kodiak is specifically designed to be towed by most light trucks and sport utility vehicles. The aerodynamic profile pushes air up the front wall and over the roof, improving towing ease and fuel economy.



5-Way Lamination

6-Way WELDED ALUMINUM Super Structure

R11 Roof & Floor
R7 Walls

ENCLOSED & HEATED UNDERBELLY

Kodiak's enclosed and heated underbelly prevents water tanks from freezing, and protects the tanks and floor from road damage.



Real Weights!

Did you know that every unit is weighed as it leaves the production line? Our certified Acu-Weight even includes options!

Most competitors publish only a base weight that doesn't include options.

Make sure that you know what the *real weight* is before you buy your next ultra-lite.



300BHSL, Bunkhouse



300BHSL, shown in Pearl Decor



300BHSL, Bunkhouse Bed & Storage



300BHSL, Bunkhouse Wardrobe

Kodiak's custom cabinetry increases storage by over 40%! Overhead cabinets are wider, taller & deeper. Solid surface countertop, stainless appliances, stainless sink w/pullout faucet, deep storage drawers, dedicated pots & pans storage, plus full-extension steel roller ball bearing drawer guides are standard!



300BHSL Bedroom Wardrobe



300BHSL Kitchen Pantry



300BHSL Island Pantry



300BHSL, shown in Pearl Decor

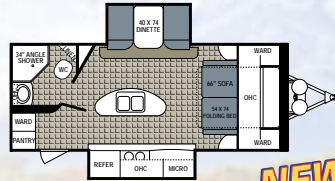
KODIAK

Travel Trailers

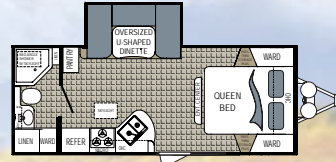
* Fresh water capacity includes water heater



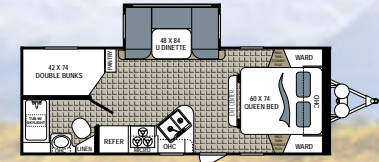
200QB
 Unloaded Weight ... 3,934 Width8'
 Cargo Capacity ... 1,466 Fresh Water *52
 Hitch314 Waste Water28
 Length 24' 1" Grey Water39
 Height 10' 1" Furnace Size (BTUs) 19,000



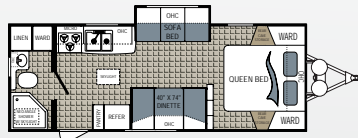
220RBSL
 Unloaded Weight ... 5,071 Width8'
 Cargo Capacity ... 2,529 Fresh Water *52
 Hitch507 Waste Water28
 Length 24' 6" Grey Water39
 Height 10' 10" Furnace Size (BTUs) 19,000



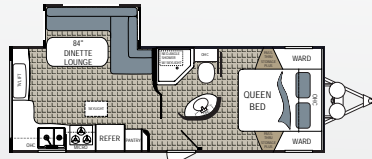
221RBSL
 Unloaded Weight ... 4,575 Width8'
 Cargo Capacity ... 1,425 Fresh Water *52
 Hitch549 Waste Water28
 Length 24' 8" Grey Water39
 Height 10' 8" Furnace Size (BTUs) 19,000



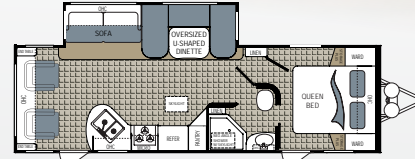
240BHSL
 Unloaded Weight ... 5,049 Width8'
 Cargo Capacity ... 1,551 Fresh Water *52
 Hitch606 Waste Water28
 Length 27' Grey Water39
 Height 10' 10" Furnace Size (BTUs) 30,000



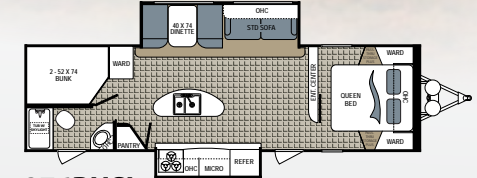
241RBSL
 Unloaded Weight ... 4,530 Width8'
 Cargo Capacity ... 1,470 Fresh Water *52
 Hitch453 Waste Water28
 Length 27' 2" Grey Water39
 Height 10' Furnace Size (BTUs) 19,000



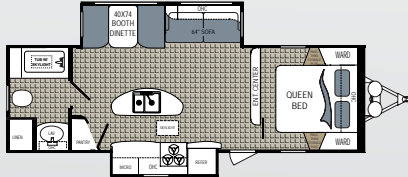
242RESL
 Unloaded Weight ... 5,027 Width8'
 Cargo Capacity ... 1,573 Fresh Water *52
 Hitch503 Waste Water22
 Length 27' 7" Grey Water39
 Height 10' 7" Furnace Size (BTUs) 30,000



263RLSL
 Unloaded Weight ... 5,806 Width8'
 Cargo Capacity ... 1,794 Fresh Water *52
 Hitch697 Waste Water28
 Length 31' Grey Water39
 Height 10' 7" Furnace Size (BTUs) 30,000



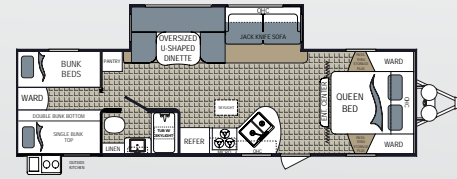
276BHSL
 Unloaded Weight ... 6,505 Width8'
 Cargo Capacity ... 1,095 Fresh Water *52
 Hitch976 Waste Water28
 Length 33' 9" Grey Water67
 Height 10' 11" Furnace Size (BTUs) 30,000



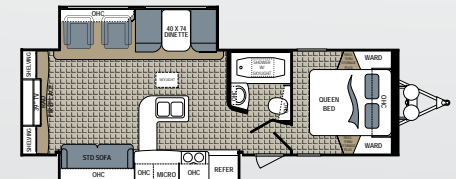
279RBSL
 Unloaded Weight ... 6,088 Width8'
 Cargo Capacity ... 1,512 Fresh Water *52
 Hitch972 Waste Water28
 Length 30' 8" Grey Water67
 Height 10' 10" Furnace Size (BTUs) 30,000



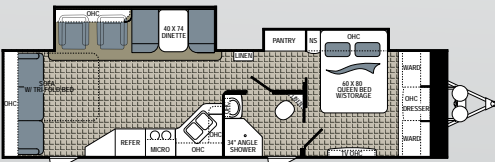
284BHSL
 Unloaded Weight ... 5,952 Width8'
 Cargo Capacity ... 1,648 Fresh Water *52
 Hitch714 Waste Water28
 Length 31' 10" Grey Water39
 Height 10' 8" Furnace Size (BTUs) 30,000



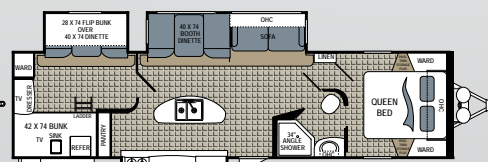
290BHSL
 Unloaded Weight ... 6,005 Width8'
 Cargo Capacity ... 1,595 Fresh Water *52
 Hitch781 Waste Water22
 Length 32' 4" Grey Water39
 Height 10' 10" Furnace Size (BTUs) 30,000



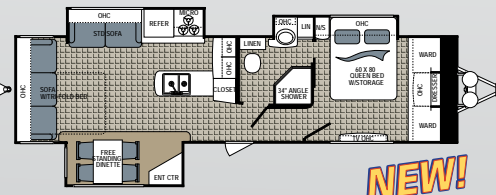
291RESL
 Unloaded Weight ... 6,609 Width8'
 Cargo Capacity ... 2,291 Fresh Water *52
 Hitch727 Waste Water28
 Length 32' 4" Grey Water56
 Height 11' 1" Furnace Size (BTUs) 30,000



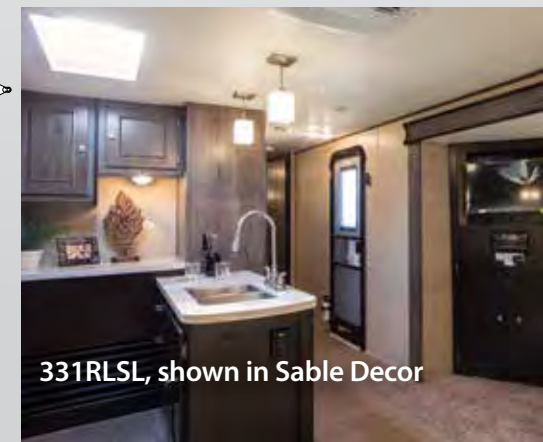
298RLSL
 Unloaded Weight ... 7,133 Width8'
 Cargo Capacity ... 2,547 Fresh Water *52
 Hitch898 Waste Water28
 Length 36' 10" Grey Water39
 Height 11' Furnace Size (BTUs) 30,000



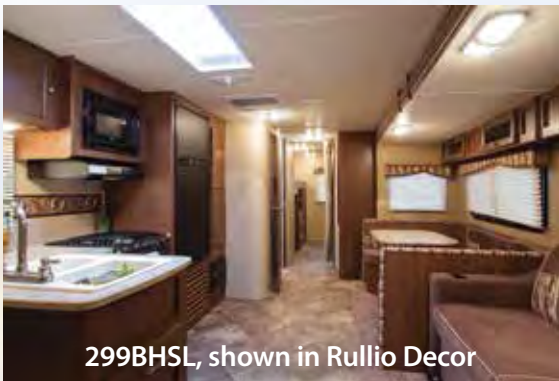
300BHSL
 Unloaded Weight ... 7,551 Width8'
 Cargo Capacity ... 1,349 Fresh Water *52
 Hitch830 Waste Water28
 Length 36' 11" Grey Water67
 Height 10' 11" Furnace Size (BTUs) 30,000



331RLSL
 Unloaded Weight ... 7,551 Width8'
 Cargo Capacity ... 2,129 Fresh Water *52
 Hitch 1,121 Waste Water28
 Length 36' 11" Grey Water39
 Height 10' 11" Furnace Size (BTUs) 30,000



331RLSL, shown in Sable Decor



299BHSL, shown in Rullio Decor

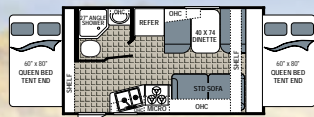


172E, shown in Peppercorn Decor

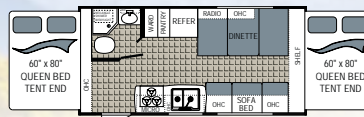
Express, Expandables & Toy Hauler

* Fresh water capacity includes water heater

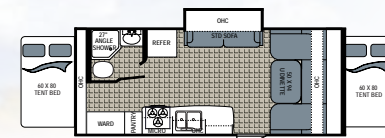
KODIAK EXPRESS



172E
 Unloaded Weight ... 3,161 Width8'
 Cargo Capacity689 Fresh Water*52
 Hitch284 Waste Water28
 Height10' Grey Water39
 Length18' 6" Furnace Size (BTUs) 19,000

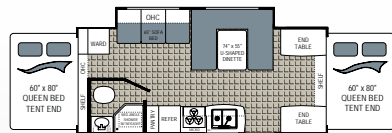


186E
 Unloaded Weight ... 3,567 Width8'
 Cargo Capacity1,433 Fresh Water*52
 Hitch357 Waste Water28
 Height10' Grey Water39
 Length20' 5" Furnace Size (BTUs) 19,000

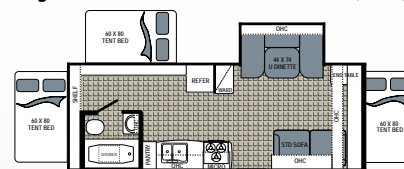


206ES
 Unloaded Weight ... 5,148 Width8'
 Cargo Capacity2,442 Fresh Water*52
 Hitch550 Waste Water28
 Length24' 6" Grey Water39
 Height10' 1" Furnace Size (BTUs) 19,000

NEW!

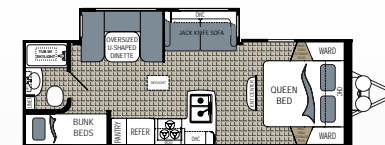


216ES
 Unloaded Weight ... 4,116 Width8'
 Cargo Capacity1,384 Fresh Water*52
 Hitch453 Waste Water28
 Height10' Grey Water39
 Length23' 8" Furnace Size (BTUs) 19,000



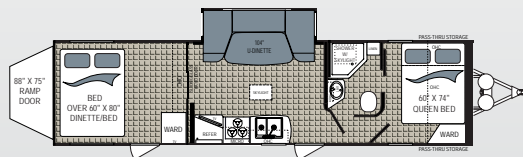
222ES
 Unloaded Weight ... 4,452 Width8'
 Cargo Capacity2,148 Fresh Water*52
 Hitch597 Waste Water28
 Length25' 11" Grey Water39
 Height9' 11" Furnace Size (BTUs) 19,000

NEW!



255BHSL
 Unloaded Weight ... 4,783 Width8'
 Cargo Capacity1,817 Fresh Water*52
 Hitch526 Waste Water28
 Height10' 7" Grey Water39
 Length28' 5" Furnace Size (BTUs) 19,000

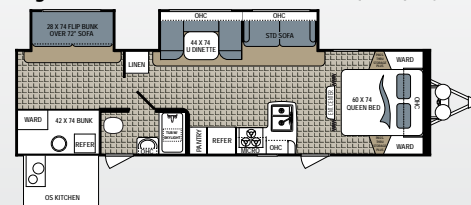
Toy Hauler



292TQB Toy Hauler
 Unloaded Weight ... 6,669 Width8'
 Cargo Capacity3,011 Fresh Water*52
 Hitch1,000 Waste Water28
 Length35' 7" Grey Water67
 Height11' Furnace Size (BTUs) 30,000



283BHSL
 Unloaded Weight ... 5,343 Width8'
 Cargo Capacity1,257 Fresh Water*52
 Hitch748 Waste Water28
 Height10' 7" Grey Water39
 Length32' Furnace Size (BTUs) 30,000



299BHSL
 Unloaded Weight ... 6,320 Width8'
 Cargo Capacity1,280 Fresh Water*52
 Hitch759 Waste Water28
 Height10' 9" Grey Water39
 Length34' 10" Furnace Size (BTUs) 30,000

KODIAK EXPRESS Decor Choices



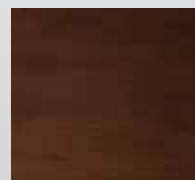
Buckshot



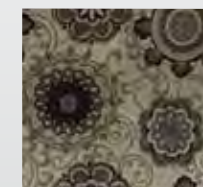
Rullio



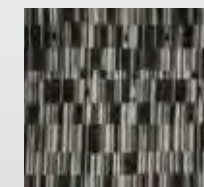
Peppercorn



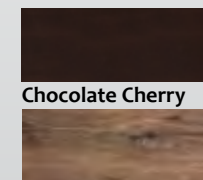
Maple Cherry



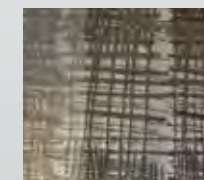
Mineral



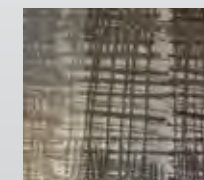
Sable



Chocolate Cherry



Driftwood Gray



Pearl

Disclaimer: Features, floorplans and specifications are subject to change without notice. Our weights represent how most units are built, inclusive of many commonly-ordered options.

KODIAK

TRAVEL TRAILERS, EXPRESS, EXPANDABLES & TOY HAULER STANDARD & OPTIONAL FEATURES

EXTERIOR FEATURES	Express	Expandables	Kodiak
Aluminum Rims	STD	STD	STD
EZ Lube® Axles	STD	STD	STD
Spare Tire/Carrier/Cover	STD, No Cover	STD, No Cover	STD, w/Cover
Diamond Plate	STD	STD	STD
Enclosed Underbelly	STD	STD	STD
Tinted Safety Glass Windows	STD	STD	STD
Frameless Windows	STD	STD	STD
Outside Speakers	STD	STD	STD
Hitch Light	N/A	N/A	STD
Patio Light	STD	STD	STD
Bedroom Roof Vent	N/A	N/A	STD
Stabilizer Jacks	STD	STD	STD
Electric Awning	STD	STD	STD
Black Tank Flush	N/A	N/A	STD
LP Cover	STD	STD	STD
20 LB LP Bottles	STD	STD	STD
Pack-N-Play	N/A	N/A	STD on Select Models
Exterior Spray Port	N/A	N/A	STD
LP Quick Disconnect	STD	STD	STD
Exterior Pullout 2-Burner Cooktop	STD on Select Models	N/A	STD on Select Models
Extended Downspouts	STD	STD	STD
TV Antenna	STD	STD	STD
Deluxe Folding Entry Assist Handle	N/A	N/A	STD
Exterior Grab Handle	STD	STD	N/A
Double or Triple Entry Step	STD	STD	STD
Slam Latch Baggage Doors	N/A	N/A	STD
Baggage Doors	STD	STD where Applicable	N/A
Graphics Package	STD	STD	STD
Upgraded Bunk Mats	STD	STD	STD
Radial Tires	STD	STD	STD
Window in Door	N/A	N/A	STD
Tri-Chromatic Fiberglass	N/A	N/A	STD
White Fiberglass	STD	STD	N/A

INTERIOR FEATURES	Express	Expandables	Kodiak
Beaufort® Flooring	STD	STD	STD
Nightshades Throughout	STD	STD	STD
Flip Sofa	STD	STD	STD
Bath Skylight	STD	STD	STD
Tub Surround	STD	STD	STD
Medicine Cabinet w/Mirror	STD	STD	STD
12V Bath Exhaust Fan	STD	STD	STD
Under Bed Storage	STD	STD	STD
3-Burner Range w/Oven	STD	STD	STD
Rangehood w/12V Fan/Light	STD	STD	STD
6 GAL Gas/Electric/DSI Water Heater	STD	STD	STD
Bluetooth AM/FM/DVD Stereo	N/A	N/A	STD
AM/FM/CD Stereo	STD	STD	NA
Cable TV Hookup w/Booster	STD	STD	STD
Bedroom TV Hookup w/LCD Backer	STD	N/A	STD
Microwave	STD	STD	STD
13,500 BTU Non Ducted A/C	N/A	STD	N/A
13,500 BTU Ducted A/C	STD	N/A	STD
6 CU FT Double-Door Refer	STD	STD	STD
Black Refer Insert	STD	STD	N/A
Stainless Steel Refer Insert	N/A	N/A	STD
Porcelain Foot Flush Toilet	STD	STD	STD
Sink Cover	N/A	N/A	STD
Solid Surface Countertop	N/A	N/A	STD
Formica Countertop	STD	STD	N/A
Peppercorn/Rulio/Buckshot Décor	STD	STD	N/A
Mineral/Pearl/Sable Décor	N/A	N/A	STD
Maple Cherry-Glazed Cabinets	STD	STD	N/A
Driftwood Gray-Glazed Cabinets	N/A	N/A	STD
Hard Door Bedroom Separation	N/A	N/A	STD/ where Applicable
Soft Curtain Bedroom Separation	STD	STD	N/A
Schwintech® Slide System	STD	STD	Apply when Available

OPTIONS	Express	Expandables	Kodiak
19" LED TV / 26" LED TV/32" LED/39" LED	N/A	N/A	OPT
15,000 BTU A/C	OPT	OPT	OPT
Tri-Fold Sofa	N/A	N/A	OPT
Table & Chairs	N/A	N/A	OPT
Outside BBQ Grill	N/A	N/A	OPT
Electric Tongue Jack	N/A	N/A	OPT



Kodiak 300BHSL Outside Kitchen



Kodiak 300BHSL Pass-thru Storage



Kodiak 291RESL Optional Power Awning w/LED Lights

Your Local Dealer



KODIAK

www.Dutchmen.com



Scan our quick response code to open our website, and explore the many products we have to offer!

Disclaimer: Product information is as accurate as possible as of the date of publication of this brochure. Features, floorplans and specifications are subject to change without notice. Please also consult our website for more current product information and specifications.

Tow Vehicle Disclaimer CAUTION: Owners of Dutchmen Manufacturing, Inc., recreational vehicles are solely responsible for the selection and proper use of tow vehicles. All customers should consult with a motor vehicle manufacturer or their dealer concerning the purchase and use of suitable tow vehicles for Dutchmen products. Dutchmen disclaims any liability or damages suffered as a result of the selection, operation, use or misuse of a tow vehicle. Dutchmen's limited warranty does not cover damage to the recreational vehicle or the tow vehicle as a result of the selection, operation, use or misuse of the tow vehicle.

P.O. BOX 2164 • 2164 Caragana Court • Goshen, Indiana 46527
Sales: 574.537.0600 • Fax: 574.975.6274



Check us out on Facebook!