

# CANYON STAR

2016 GAS MOTOR COACH



WHEN YOU KNOW THE DIFFERENCE <sup>SM</sup>



## SHANNON STOVER

*Marketing Manager, Newmar Corporation*

“As Marketing Manager, my mission is to introduce RV enthusiasts to The Newmar Difference. It all begins with thoughtfully-designed, full-color brochures and continues at [NewmarCorp.com](http://NewmarCorp.com), where shoppers will find expert-hosted video overviews of each of our models, complete 360° interior views, our all-new Build-a-Coach feature and so much more. Providing those interested in our award-winning lineup with an enjoyable, stress-free experience is what drives our every marketing effort.”





# CANYON STAR

GAS-POWERED. LUXURY-INFUSED.

Empire glazed maple cabinets with designer glazed doors

King-size bed with smooth-top mattress on select models

Multiple floor plans, including wheelchair-accessible and garage options

Six-way power driver's seat with passenger work station



WHEN YOU KNOW THE DIFFERENCE <sup>SM</sup>

## WELCOME HOME

Crafted to deliver a best-in-class, residential-quality living experience, the 2016 Canyon Star is outfitted with deluxe laminate wood flooring and Flexsteel® Ultralux leather furniture. Up front, an all-new 4-speaker JBL® premium cockpit audio system is custom-tuned for Canyon Star. Steps away, hours of living-area entertainment is made possible by a Sony® LED TV with DVD player.



JBL® Premium Audio





Illusion Décor with Sienna Glazed Maple Cabinetry – Floor Plan 3903



Solid-Surface Countertops with Sienna Maple Glazed Cabinetry



Solid-Surface Dinette

## A MOST APPETIZING SPACE

With brilliant LED lighting illuminating the polished solid-surface countertops and under-mounted stainless steel sink, the 2016 Canyon Star makes preparing your home-cooked favorites simple. Sienna glazed maple cabinets with concealed hinges and a family-size pantry allow you to store everything from ingredients to dishware with ease.

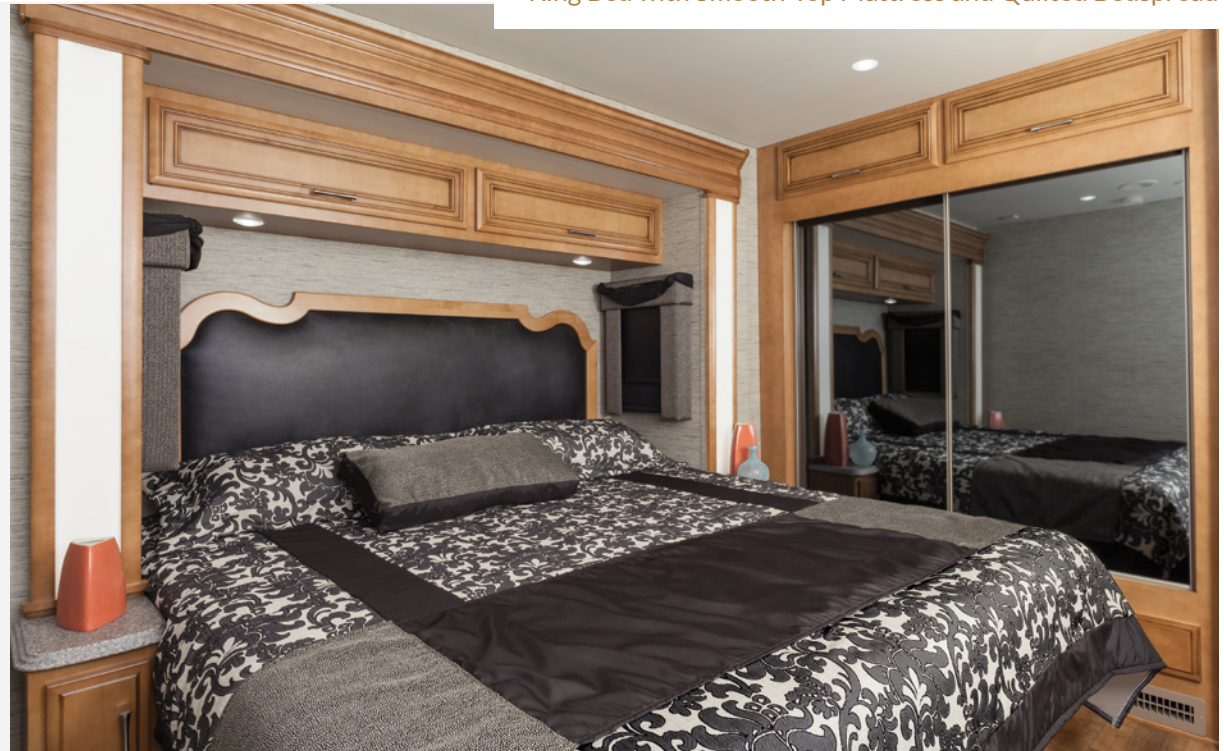
Of course, no Newmar galley would be complete without accommodating features like a solid-surface dinette and an oversized wood pantry. Across the way, you'll find a perfectly-placed retractable LED TV, located just above an irresistibly practical buffet space.

## THE SUITE OF YOUR DREAMS

A true master bedroom, the 2016 Canyon Star provides more than just sleeping quarters. The Sony® LED TV and optional Blu-ray/DVD player work in unison to produce high-definition picture and sound, while a local soundtrack is made possible by the standard dual radio speakers with convenient on/off switch.

You'll discover plenty of room for your belongings inside of a lit hardwood wardrobe set along the rear wall\*. There is even space for an available two-piece washer and dryer, so you can make sure you have a clean outfit for every occasion. When it's time to turn in, an available king-size smooth-top mattress with quilted bedspread, bed scarf and accent pillow is there to greet you.

*\*Rear-wall wardrobe included with select floor plans*





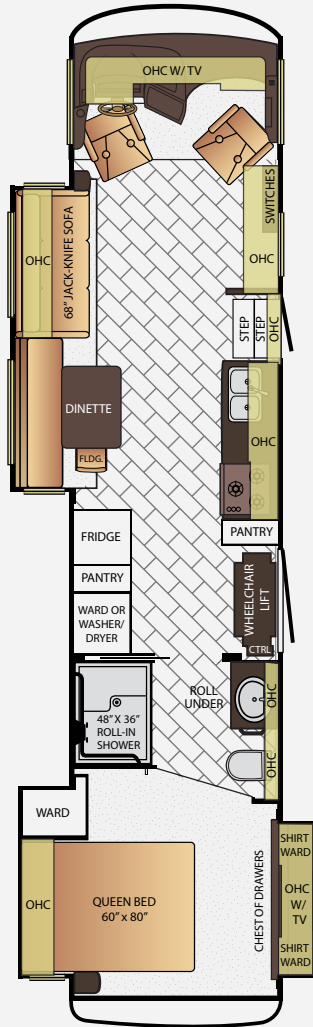
## REFRESHINGLY ELEGANT

The Canyon Star master bath makes it a joy to wash away the day or start anew, beginning with a spacious enclosed shower powered by a Demand water system with SHURflo® pump. Nearby, a solid-surface countertop surrounds an under-mounted porcelain sink, while new door and drawer hardware accent the premium hardwood cabinetry.



Storage Cabinets





## 3911

App. Overall Length	39'11"
Width	101.5"
App. Overall Height	12'11"
Interior Width	95.5"
Interior Height	84"
Grey Tank	60 gal.
Sewage Tank	40 gal.
Water Tank	75 gal.
Propane Tank	25 gal.
Furnace	40,000 btu



## FREEDOM KNOWS NO BOUNDARIES

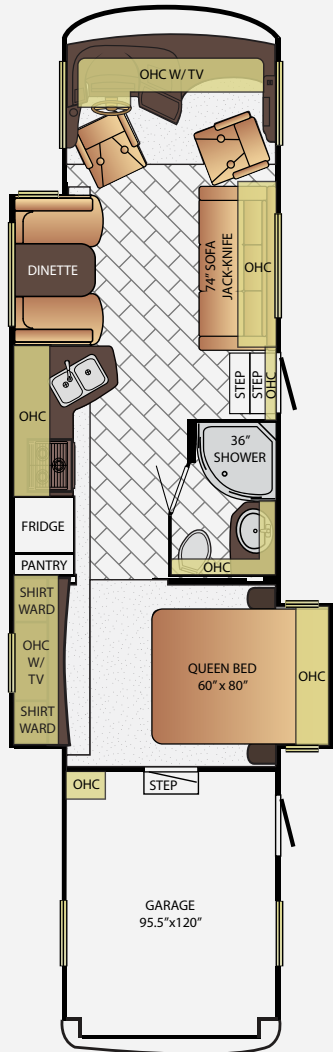
The industry's first wheelchair-accessible floor plan, Canyon Star 3911 features a Braun wheelchair lift, 30" wide pathway from front to back, an L-shaped dinette with wheelchair seating space, a completely altered ADA-approved shower and much more. Even better, Canyon Star 3911 represents the world's most affordable wheelchair-accessible motor coach.

*\*2014 Seaglass interior*



Lowered Control Switches





## 3921

App. Overall Length	39'11"
Width	101.5"
App. Overall Height	12' 11"
Interior Width	95.5"
Interior Height	84"
Grey Tank	60 gal.
Sewage Tank	40 gal.
Water Tank	75 gal.
Propane Tank	25 gal.
Furnace	42,000 btu

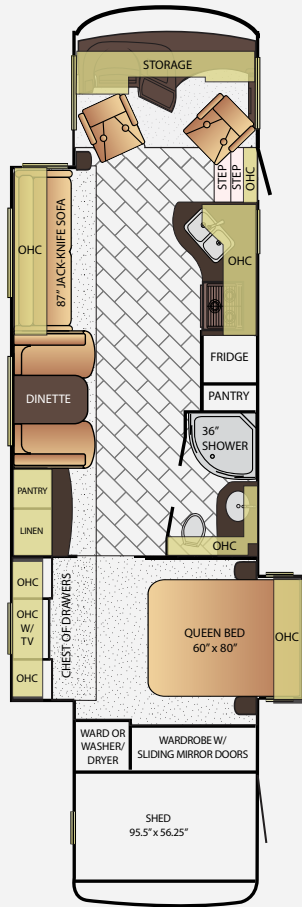


## ENDLESS POSSIBILITIES

The largest garage space offered on any Newmar coach, toy hauler floor plan 3921 delivers 95.5" by 120" of room that can be accessed by way of a rear ramp designed for ATVs, motorcycles and more. Of course, Canyon Star 3921 also works perfectly as an extra bedroom or living space thanks to an optional electric lift bunk beds.



Available Electric-Lift Bunk Beds



## 3922

App. Overall Length	39'11"
Width	101.5"
App. Overall Height	12'11"
Interior Width	95.5"
Interior Height	84"
Grey Tank	60 gal.
Sewage Tank	40 gal.
Water Tank	75 gal.
Propane Tank	25 gal.
Furnace	40,000 btu

Measuring 95.5" wide and 56.25", Utility Shed is accessible via a side-entry door with ramp and triple step. Once inside, there are plenty of unexpected features to be found, including diamond tread rubber flooring.



Side-Entry Door with Bike Ramp and Triple Steps

## AMPLE ROOM FOR EVERYTHING

Canyon Star now offers a just-right-sized storage solution in the form of the Utility Shed\*. Perfect for those looking for extra space, Utility Shed easily accommodates a variety of outdoor equipment using a Gladiator® bracket system that makes hanging and securing your gear easy.

*\*Utility Shed included on floor plan 3922*



Diamond-Plated Gladiator® Cabinets





NEWMAR

Canyon  
Star

Canyon  
Star





32" Sony® LED TV with AM/FM CD Player

## PRACTICALLY BRILLIANT

With a durable Ford® F-53 26,000 lb. chassis now standard, the 2016 Canyon Star is engineered to handle more than ever before. Side-hinged baggage doors reveal several roomy storage compartments, each complete with interior-controlled lighting and cargo liners.

Utility isn't the only category where Canyon Star excels, however. Chrome exterior accents and frameless dual-pane windows add elegance to the exterior of the industry's most-luxurious gas coach. Meanwhile, an available flush-mount exterior entertainment center – complete with a 32" Sony® LED TV and radio/CD-player – makes entertaining easy.

**SONY®**

## EXTERIOR DÉCOR



REGENCY EXTERIOR

## INTERIOR DÉCOR



DENTON INTERIOR



MONORAIL EXTERIOR

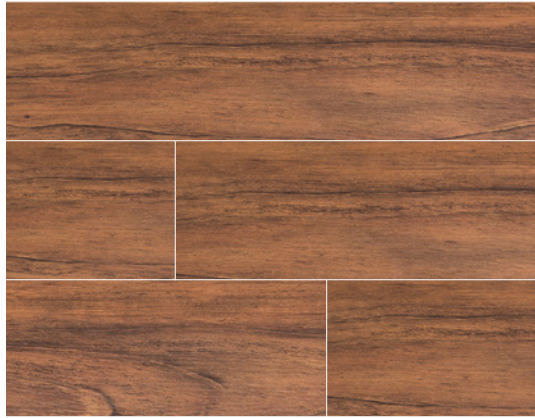


ILLUSION INTERIOR

## OPTIONAL LAMINATE PLANK FLOORING

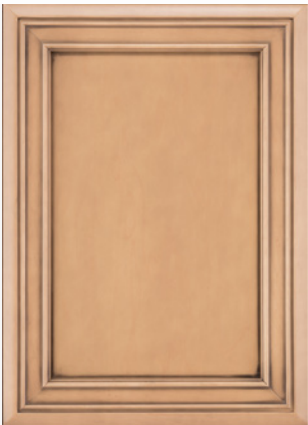


FLOORING 1



FLOORING 2

## WOOD OPTIONS



ASTORIA GLAZED  
MAPLE

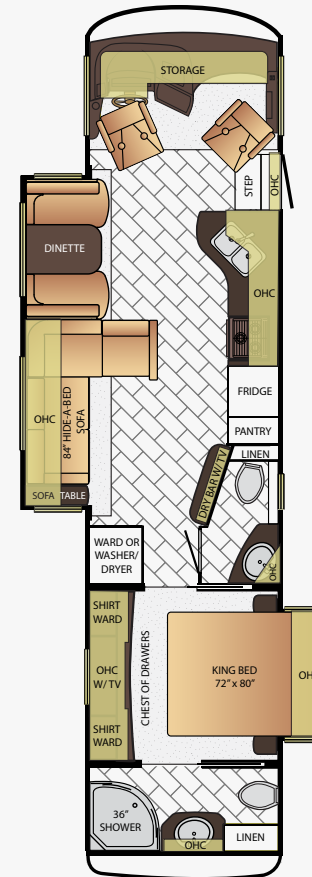


SIENNA GLAZED  
MAPLE



EMPIRE GLAZED  
MAPLE

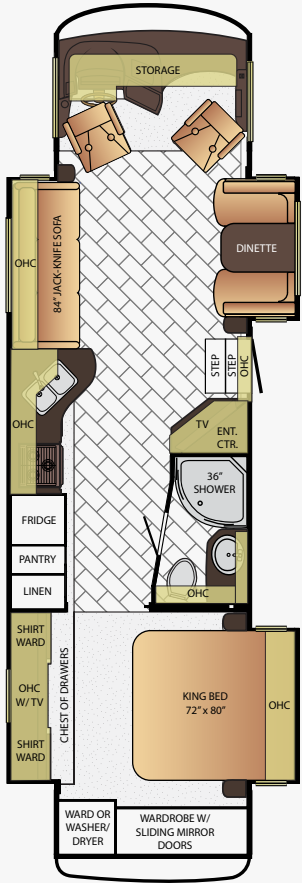
## FLOOR PLANS



3710

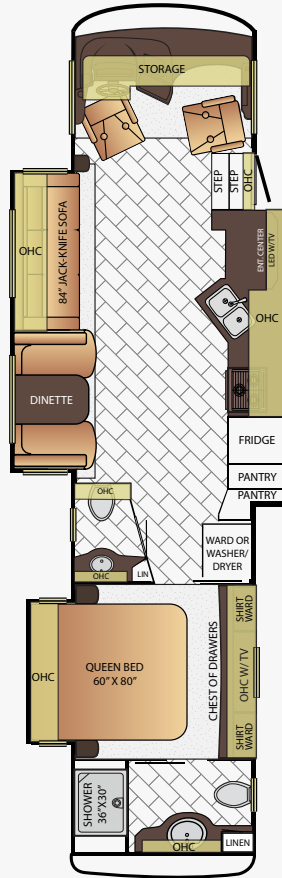
App. Overall Length	37'11"
Width	101.5"
App. Overall Height	12'11"
Interior Width	95.5"
Interior Height	84"
Grey Tank	60 gal.
Sewage Tank	86 gal.
Water Tank	75 gal.
Propane Tank	25 gal.
Furnace	40,000 btu

# FLOOR PLANS



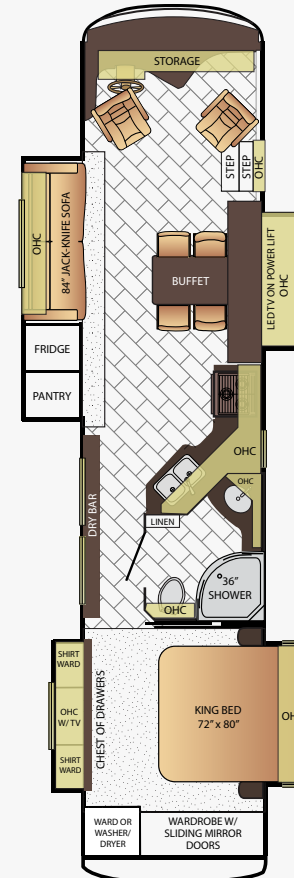
3712

App. Overall Length	37'11"
Width	101.5"
App. Overall Height	12'11"
Interior Width	95.5"
Interior Height	84"
Grey Tank	60 gal.
Sewage Tank	40 gal.
Water Tank	75 gal.
Propane Tank	25 gal.
Furnace	40,000 btu



3755

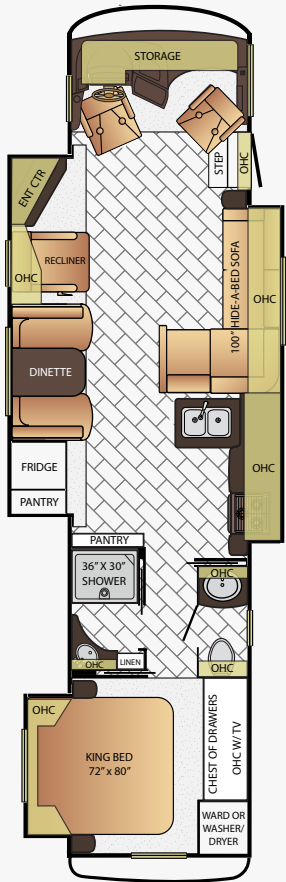
App. Overall Length	37'11"
Width	101.5"
App. Overall Height	12'11"
Interior Width	95.5"
Interior Height	84"
Grey Tank	60 gal.
Sewage Tank	86 gal.
Water Tank	75 gal.
Propane Tank	25 gal.
Furnace	42,000 btu



3903

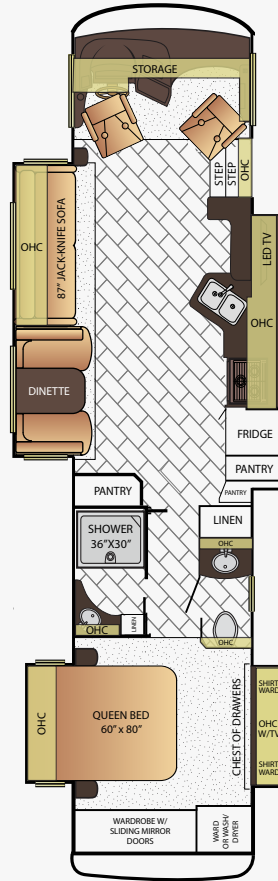
App. Overall Length	39'11"
Width	101.5"
App. Overall Height	12'11"
Interior Width	95.5"
Interior Height	84"
Grey Tank	60 gal.
Sewage Tank	40 gal.
Water Tank	75 gal.
Propane Tank	25 gal.
Furnace	40,000 btu

# FLOOR PLANS



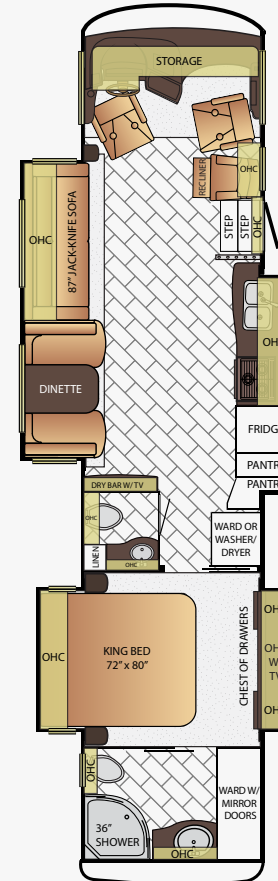
3914

App. Overall Length	39'11"
Width	101.5"
App. Overall Height	12'11"
Interior Width	95.5"
Interior Height	84"
Grey Tank	60 gal.
Sewage Tank	40 gal.
Water Tank	75 gal.
Propane Tank	25 gal.
Furnace	40,000 btu



3944

App. Overall Length	39'11"
Width	101.5"
App. Overall Height	12'11"
Interior Width	95.5"
Interior Height	84"
Grey Tank	60 gal.
Sewage Tank	40 gal.
Water Tank	75 gal.
Propane Tank	25 gal.
Furnace	40,000 btu



3953

App. Overall Length	39'11"
Width	101.5"
App. Overall Height	12'11"
Interior Width	95.5"
Interior Height	84"
Grey Tank	60 gal.
Sewage Tank	86 gal.
Water Tank	75 gal.
Propane Tank	25 gal.
Furnace	40,000 btu

## CONSTRUCTION & CHASSIS SPECIFICATIONS

LIKE A FINE HOME, Canyon Star is framed 16 inches on center, allowing the best placement of outlets, switches and other components. Newmar uses only Sikaflex elastic adhesive throughout Canyon Star's construction – one of the strongest bonding agents available. It seals against air and water and helps dampen

sound and vibration. Electrical wiring holes in Canyon Star's aluminum frame are ringed with plastic grommets to protect wires from chafing. And Newmar's Total Comfort™ Central Air is two separate, fully ducted systems that distribute cool air and remove warm air.

Floor Plan	Engine HP	Axle Ratio	Fuel Cap.	Wheel Base	Front GAWR*	Rear GAWR*	GVWR*	GCWR*	App. UVW	App. NCC
3710	362	5.38	80 gal.	242	9,000 lb.	17,500 lb.	26,000 lb.	30,000 lb.	20,580 lb.	5,420 lb.
3712	362	5.38	80 gal.	242	9,000 lb.	17,500 lb.	26,000 lb.	30,000 lb.	22,216 lb.	3,784 lb.
3755	362	5.38	80 gal.	242	9,000 lb.	17,500 lb.	26,000 lb.	30,000 lb.	20,680 lb.	5,320 lb.
3903	362	5.38	80 gal.	266	9,000 lb.	17,500 lb.	26,000 lb.	30,000 lb.	22,264 lb.	3,736 lb.
3911	362	5.38	80 gal.	260	9,000 lb.	17,500 lb.	26,000 lb.	30,000 lb.	21,418 lb.	4,582 lb.
3914	362	5.38	80 gal.	266	9,000 lb.	17,500 lb.	26,000 lb.	30,000 lb.	22,201 lb.	3,799 lb.
3921	362	5.38	80 gal.	266	9,000 lb.	17,500 lb.	26,000 lb.	30,000 lb.	21,455 lb.	4,545 lb.
3922	362	5.38	80 gal.	266	9,000 lb.	17,500 lb.	26,000 lb.	30,000 lb.	21,668 lb.	4,332 lb.
3944	362	5.38	80 gal.	260	9,000 lb.	17,500 lb.	26,000 lb.	30,000 lb.	22,201 lb.	3,799 lb.
3953	362	5.38	80 gal.	260	9,000 lb.	17,500 lb.	26,000 lb.	30,000 lb.	21,892 lb.	4,108 lb.

Lengths, heights, widths and dry weights are approximate. Weight will vary based on optional equipment added to the above base weight.

**GAWR:** Gross Axle Weight Rating is the maximum permissible weight for an axle.

**GVWR:** Gross Vehicle Weight Rating is the maximum permissible weight for a fully loaded motor coach.

**GCWR:** Gross Combination Weight Rating is the value specified by the manufacturer of the vehicle as the maximum allowable loaded weight of this motor coach and any towed trailer or towed vehicle.

**UVW:** Unloaded Vehicle Weight is the weight of this motor coach as built at the factory with full fuel, engine oil and coolants. Does not include cargo, fresh water, propane gas or dealer-installed accessories.

**NCC:** Net Carrying Capacity is the maximum weight of all occupants, including the driver, personal belongings, food, fresh water, waste water, propane gas, tools, tongue weight of towed vehicle, dealer-installed accessories, etc., that can be carried by the motor coach.

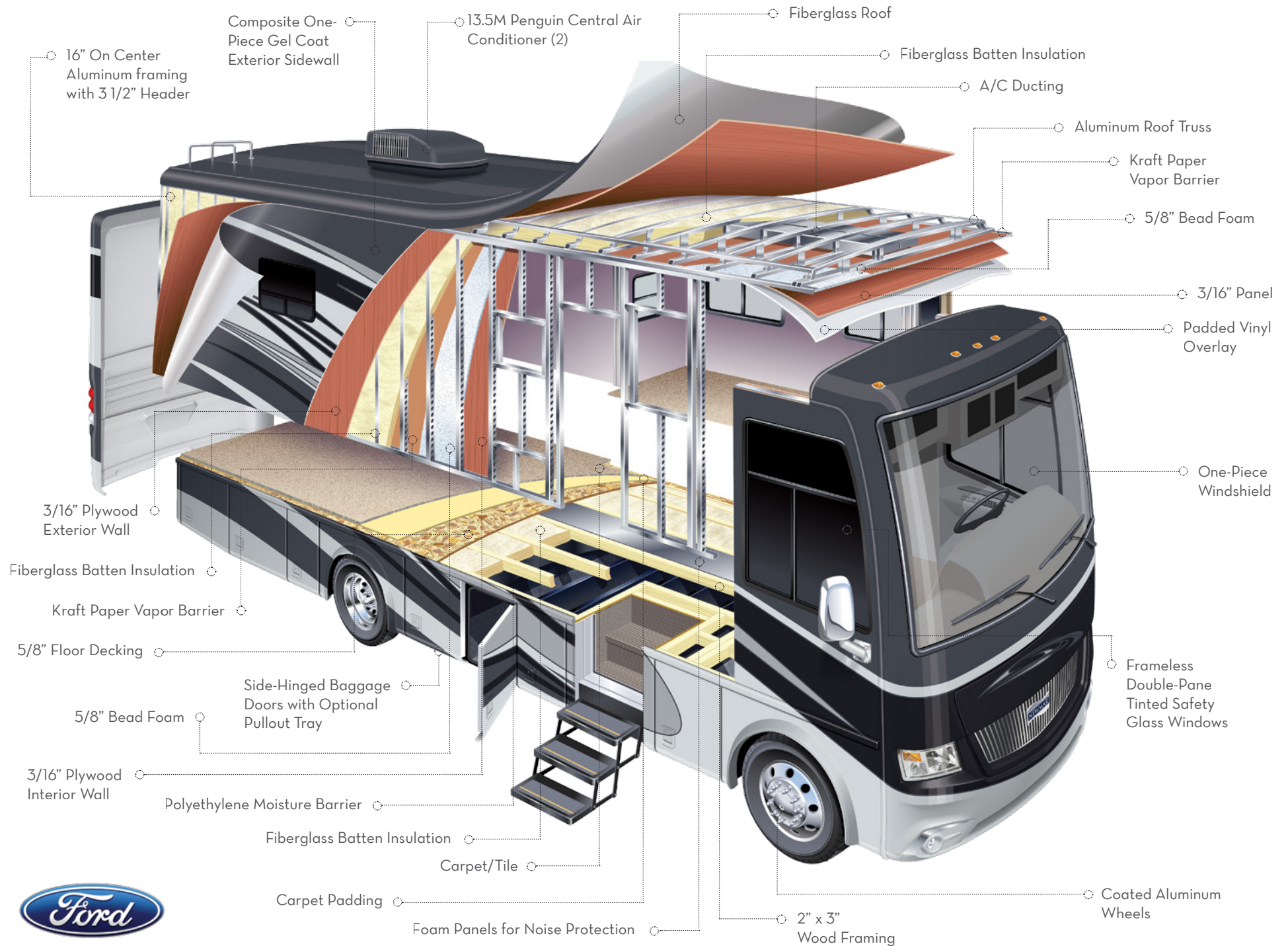
*\*Specifications supplied by the chassis manufacturer.*

### Canyon Star R-Values

**Roof R-Value = 16**

**Sidewall R-Value = 11**

**Floor R-Value = 11**



# FEATURES & OPTIONS



## CHASSIS FEATURES

Ford® F-53 26,000lb. Chassis

Cruise Control

Tilt Steering Wheel

Aluminum Wheels



## AIR CONDITIONING AND HEATING

Two 13.5M Penguin Central Air Conditioners

Driver & Passenger Dash Overhead Ventilation System

Propane Gas Furnace with Ducted Heat

Propane Gas Leak Detector

### OPTIONS

Two 13.5M Penguin™ Heat Pump Central Air Conditioners

13.5M Penguin™ Air Conditioner with Heat Strip in Garage\*

Auxiliary Heater in Bedroom



## APPLIANCES

Three-Burner Recessed Range with Oven\*

Norcold® 8 Cf. Refrigerator

30" Over the Range Microwave Oven\*

10 gal. Gas/Electric Water Heater Direct-Spark Ignition\*

### OPTIONS

30" Convection Microwave with Three-Burner Gas Cooktop and Dishwasher

30" Convection Microwave with Three-Burner Gas Cooktop with Piezzo Ignition

30" Convection Microwave in Kitchen Overhead with Drawer Below Cooktop

Norcold® 12 Cf. Four-Door Refrigerator with Icemaker

Whirlpool 19.7 Cf. Refrigerator, 2000 Watt Modified Sine Inverter and Six-6 Volt Batteries

Frigidaire® 10 Cf. Refrigerator with Dedicated 1000 Watt Pure Sine Inverter & Two Extra Batteries

Whirlpool® Two Piece Stacked Washer & Dryer

Washer/Dryer Prep

Central Vacuum with Deluxe Tool Kit

Shop Vac in Garage\*

Electric Fireplace in Living Area\*



## AUDIO, VIDEO AND ACCESSORIES

Sony® LED TV and DVD Player in Living & Bedroom Area (TV Sizes Vary Per Floorplan)

AM/FM/CD Dash Radio with Harman/JBL 180 Watt Sound System

AM/FM/DVD Radio with Two Exterior and Two Interior Speakers

Rearview Color Monitor System with Audio

Winegard Digital Crank Up TV Antenna

Two Bedroom Radio Speakers with On/Off Switch

Satellite Prep on Roof

TV Jack and 110 Volt Recept in Door Side Exterior Storage Compartment

### OPTIONS

Dash Radio with Touch Screen Navigation System

Sony® Surround Sound System with Sub-Woofer

Sirius® Satellite Radio Capability (Does not include monthly subscription)

Sony® 40" LED TV in Front Overhead\*

Sony® 48" Televator TV with Fireplace in Place of Front Overhead TV

Winegard® Digital TV Antenna with Power Lift

Winegard® Automatic Dome Satellite Dish (does not include receiver)

High-Definition Wiring with Blu-Ray DVD Player

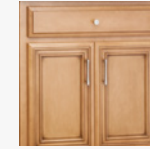
Extra TV Located at Dry Bar Style Cabinet In Place of Pantry

Sony® 32" LED TV in Garage\*

Exterior Entertainment Center in Sidewall with Sony® 32" LED TV and Radio/CD

Exterior Entertainment Center in Storage Compartment with Sony® 32" LED TV and Radio/CD

Sideview Cameras with Smart Phone Connection



## CABINETS AND FURNITURE

Empire Maple Glazed Cabinets with Designer Glazed Doors

Polished Solid Surface Countertop in Kitchen with Stainless Steel and Sink Covers

Solid Surface Countertops in Bathroom and Bedroom

Pull-Out Pantry Shelves\*

Flexsteel® Ultralux Leather Sofa and Driver Passenger Seats

Dinette with Power Adjusted Table, Bench Seat & Folding Chair on 3911 Floorplan

Six-Way Power Driver Seat

Passenger Seat Work Station

Lifts on Bed Top to Access Storage Area\*

Power Incline Head of Bed with Sleep Number® Deluxe Mattress on 3911 Floorplan

Power Incline Retracting Bed Base with Sleep Number® Deluxe Aire Mattress on 3914 Floorplan

### OPTIONS

Astoria Maple Glazed Cabinets with Designer Glazed Doors

Sienna Maple Glazed Cabinets with Designer Glazed Doors

Wicker Maple Glazed Hardwood Face Frame Cabinets and Slideout Fascia

Manhattan Maple Glazed Hardwood Face Frame Cabinets and Slideout Fascia

Verona Maple Hardwood Face Frame Cabinets and Slideout Fascia

Six Way Power for Passenger Seat

Combination Desk/Dinette with Free Standing Hidden-Leaf Table with Four Chairs

Combination Desk with Buffet Dinette Table (Two Fixed/Two Folding)\*

Combination Desk/Dinette with Roll Away Table (Two Fixed/Two Folding)\*

Free Standing Hidden Leaf Dinette Table with Four Chairs (Two Fixed/Two Folding)\*

Off Door Side-Side Opening Hida A Bed Sofa

Off Door Side Hide A Bed Sofa in Place of Extenda L Sofa

Power Extenda Flex Dinette

Drop Down Bunk Bed Over Driver/Passenger Seats with 32" TV in Front Overhead

Sleep Number® Deluxe Air Mattress

Full Height Power Incline Retracting Bed Base

Power Incline Retracting Bed Base with Sleep Number® Air Mattress

Electric Lift Bunk Beds with Seating, Pedestal Table and Removable Floor Rug in Garage\*



# FEATURES & OPTIONS



## ELECTRICAL FEATURES

- 5.5 kW Cummins Onan® Generator with Remote Switch and Automatic Changeover
- 50 Amp Electrical Service with Flexible Cord and Automatic Transfer Switch
- Two 12 Volt House Batteries
- Battery Disconnect Switch for House Battery
- 12 Volt Auxiliary Recept on Dashboard
- 5 Watt Solar Panel to Charge Chassis Battery
- 60 Amp Converter
- Daytime Running Lights
- Emergency Engine Start Switch
- Accent Lights in Slideout Fascia Trim
- Manually Operated Hold-To-Run Slideout Switch
- Energy Management System
- USB Charger at Passenger Seat Area
- ICC Light Flasher Switch
- Lights in Exterior Storage Compartments, Controlled by an Interior Master Switch

### OPTIONS

- 1000 Watt Inverter Ran to TVs (Not Available on Option 6J655)
- 7.0 Kw Onan Generator
- Power Rewind Reel with 34' Cord
- Solar Prep



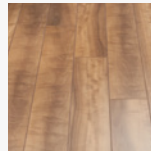
## EXTERIOR FEATURES

- Full-paint Masterpiece Finish™ with Clearcoat Finish
- Dura Shield Protection on Front Cap
- Convex Exterior Mirrors with Defrost and Remote Control
- Entrance Door with Automatic Step
- Entrance Door with Automatic Triple Step in Garage\* (3921 Floorplan)
- Entrance Door with Ramp & Automatic Triple Step\* (3922 Floorplan)
- Fueling Station in Garage\* (3921 Floorplan)
- Rear Hitch for Towing Car
- Rear Ramp Access Designed for ATV and Normal Clearance Motorcycle\* (3921 Floorplans)

- Wheelchair lift on 3911 Floorplan
- Stainless Steel Trim Pieces
- Hydraulic Leveling Jacks
- Undercoating
- Exterior Storage Compartments with Cargo Liner

### OPTIONS

- Rear Ladder

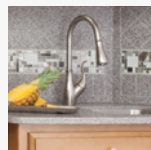


## INTERIOR FEATURES

- Carpeting in Bedroom and On Slideout Floors
- Auto Motion Power Shade at Windshield & Manual Shades at Driver/Passenger Side Windows
- Day/Night Pleated Window Shades and Lambrequins
- Dash Panel Color Coordinated ABS
- Quilted Bedspread with Bed Scarf and Accent Pillow
- Mini Blinds in Kitchen and Bathroom Windows
- Vinyl Tile Floor in Kitchen, Living Area and Bathroom
- Shoe Storage Located in Entrance Door Step Compartment
- Diamond Tread Rubber Flooring in Garage & Shed Area\* (3921 & 3922 Floorplans)
- Tie-down Track in Garage\* (3921 Floorplan) and Shed (3922 Floorplan)

### OPTIONS

- Two Wheel Chocks in Garage Area\*
- Auto Motion Power Dual Window Shades with Remote Control\*
- Bathroom Floor Extended in Bedroom Area
- Laminate Plank Floor in Place of Vinyl Tile



## PLUMBING AND BATH FEATURES

- Demand Water System
- Sewage Holding Tank Rinse
- Water Heater Bypass System
- Dometic® 321 China Bowl Stool\*
- ABS Shower with Shower Door\*
- Exterior Shower

- Water Filter for Entire Unit
- Systems Monitor Panel

### OPTIONS

- 110 Volt Heat Pads for Holding Tanks



## CONSTRUCTION FEATURES

- BriteTEK™ Roof with Walkable Decking
- 5/8" Foam Insulation Laminated in Sidewalls and Ceiling
- Gelcoated Fiberglass Exterior Sidewalls, Front and Rear Caps
- Aluminum-Frame Sidewalls & Roof Construction, 16" on Center

### OPTIONS

- One Piece Molded Fiberglass Roof
- Polar Pak R19 Batten Insulation in Roof
- Power Opening Wheelchair Lift Entrance Door on 3911 Floorplan



## WINDOWS, AWNINGS AND VENTS

- Frameless Double-Pane Tinted Safety Glass Windows
- Fantastic® Vent with Rain Sensor in Kitchen, Bathroom and Garage\*
- Skylight Above Shower
- Skylight in 3922 Shed Area
- Dometic® Weather Pro Power Awning with Aluminum Weather Shield
- Slideout Covers
- One Piece Tinted Windshield

### OPTIONS

- Kitchen Window
- Rear Window in Bedroom
- Driver's Door with Power Window
- Bunk Windows\*
- Screen for Rear Cargo Door\*

\*Check With Dealership On Floorplan Availability



## OUR PARTNERS

*Where the Finest Names in Quality and Performance are Along for the Ride*

To ensure that you experience only the best in comfort, control and unsurpassed convenience in our incomparable family of Luxury Coaches, Newmar partners with the most prestigious names in mobile lifestyle, entertainment and technology. These brands

are leaders in their fields and legends in providing customers with new, unsurpassed levels of quality and reliability. Best-in-class performance from names you can trust. At Newmar, that's our difference. And our promise.



## THE MILLER WAY

*Industry-Leading Quality,  
From Our Family to Yours*

For the Miller family, RVs are what we build because RVing is what we love. To us, the RV lifestyle is more than our business – it's our passion. Our customers choose Newmar time and time again because they trust in us, our products and our people.

I myself am proud to own a Dutch Star designed, assembled and backed by artisans, engineers and service specialists who represent the best our industry has to offer. Men and women who have spent an average of 13 years as members of the Newmar family. Without them, The Newmar Difference simply wouldn't exist.

Matt Miller  
*Newmar President, lifelong motor coach enthusiast*



## NEWMAR EXPRESS LIMITED WARRANTY

Every Canyon Star gas motor coach is backed by Newmar's one-year limited warranty/unlimited miles. Ask your Newmar dealer for details.

## LIMITED FIVE-YEAR STRUCTURAL WARRANTY

If any part of your Newmar recreational vehicle superstructure (which is the steel/aluminum structure of the sidewall, roof or frame) fails to perform properly within five years from the date of purchase because of faulty workmanship or material supplied by Newmar, it will be repaired without charge for either parts or labor by Newmar. This structural warranty is available only to the original purchaser and is non-transferable.

Some features in our literature are optional. Colors and finishes are photographic representations. The actual materials may look different. Prices, specifications and floor plans are subject to change at Newmar's discretion, without prior notice or obligation. Please see your dealer for actual samples and specifications.



WHEN YOU KNOW THE DIFFERENCE <sup>SM</sup>