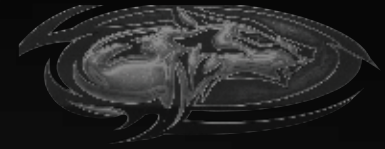


WOLF PACK



WOLF PACK

SPORT UTILITY TRAVEL TRAILERS & FIFTH WHEELS



DOMINATE THE PACK.



Why *shouldn't* your RV have a garage?



315PACK12

The Wolf Pack by Cherokee is engineered with impeccable quality, distinctive features, superior comfort and remarkable affordability. Wolf Pack offers our customers a chance to escape the ordinary and relax, to enjoy family and friends and to see nature in all its beauty and wonder. These special life moments are the reasons we take such pride in all we do.



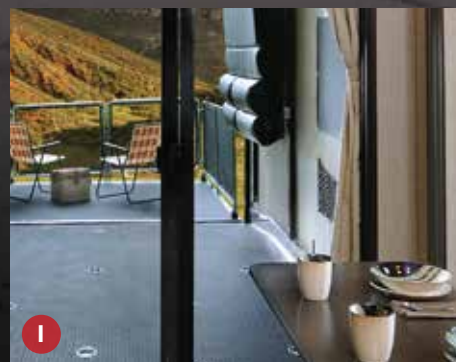
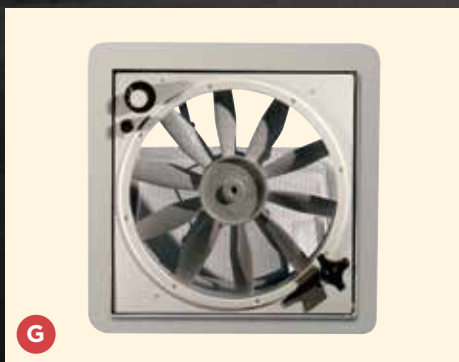
25PACK12



Wolf Packs unique designs offer customers storage areas from 12' to 14', even an industry leading exterior storage front rack model (20PACK10). Wolf Pack's designers have focused on useful floorplans, just like what is shown here with the largest bathroom, and enclosed garage. Most models feature full size walk around master beds with tremendous storage.



WOLF PACK STANDARDS & OPTIONS



A Our large and spacious slide out room features comfortable dinette cushions and extra-large dinette seating. Our oversized windows usher an abundance of light into the unit. Notice the residential wood blind window treatments.

B Our stylish residential REAL WOOD cabinet doors provide ample storage space for campers wishing to take a week-end getaway or a longer, extended vacation.

C Wolf Pack's deep, single bowl sink serves as a large basin to wash dishes or fill large pots and pans for cooking. Our high rise pull out faucet allows you extra room to clean up with ease.

D Wolf Pack's exclusive "Seamless" countertop eliminates any buildup and adds a high-end residential appearance

E Our smooth roller glide drawers fully extend to accommodate any silverware or storage needs while providing easy access.

F Every light in or on the new Wolf Pack is LED. The interior LED strip lighting, provided in the optional Limited Package, illuminates several areas of the unit, giving you a beautiful accent to the unit. LED lights use less power and do not heat up.

G Wolf Pack's STANDARD Fantastic vent fan provides a powerful air flow while maintaining fresh air throughout the unit.

H Happi-Jac bed systems offer additional seating, multiple sleeping areas, easy use, and it even folds against the walls to provide extra headroom.

I Wolf Pack features 50% more tie downs than any competitor. You can always secure your items easily. Each tie down is secured through the frame backer and sealed to the PLYWOOD floors.

WOLF PACK EXTERIOR FEATURES



J Wolf Pack's Power Awning, found in our optional Limited Package, provides an easy way to shade the exterior patio area with just a push of a button. Wolf Pack's awnings are placed to cover your entry door.



K Tire pressure monitoring systems on Wolf Packs nitrogen radial tires insure peace of mind when preparing and rolling down the road.

L The heavy duty tongue jack found in the optional Limited Package provides you an easy way to load your trailer with a push of a button. (Travel Trailers only)

M The all new RIGID® LED loading and scare lights provide 4x more light than standard exterior lights. This little light packs a punch, from the leading company in off-road illumination



N Solar prep from Furrion is featured on all new Wolf Pack Models

O Wireless backup camera prep

P Optional ramp door patio system increases your living space.

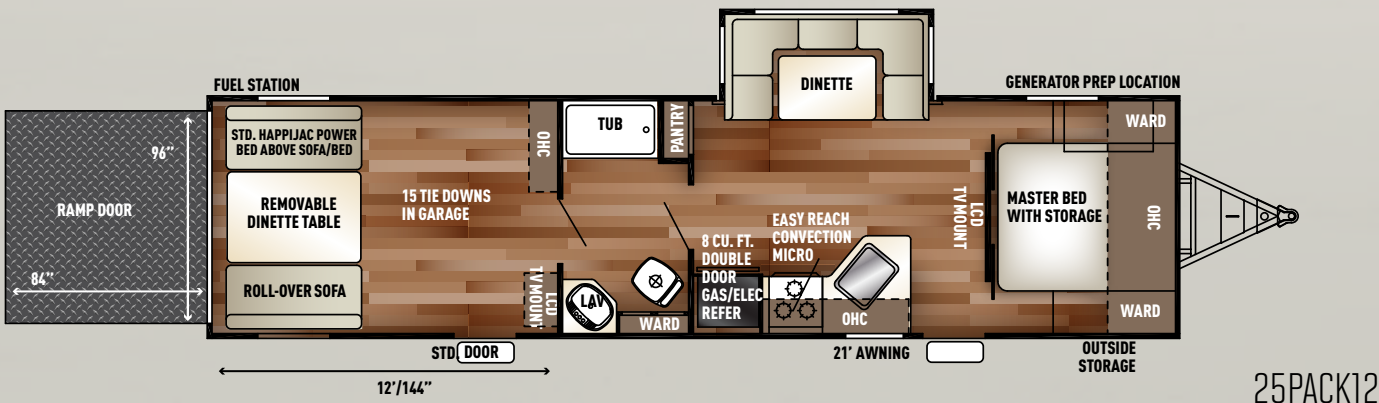
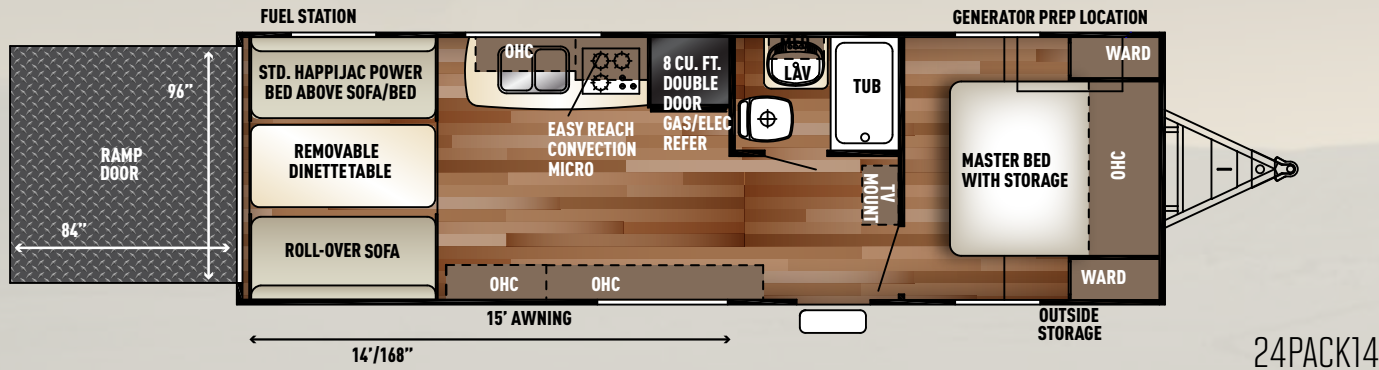
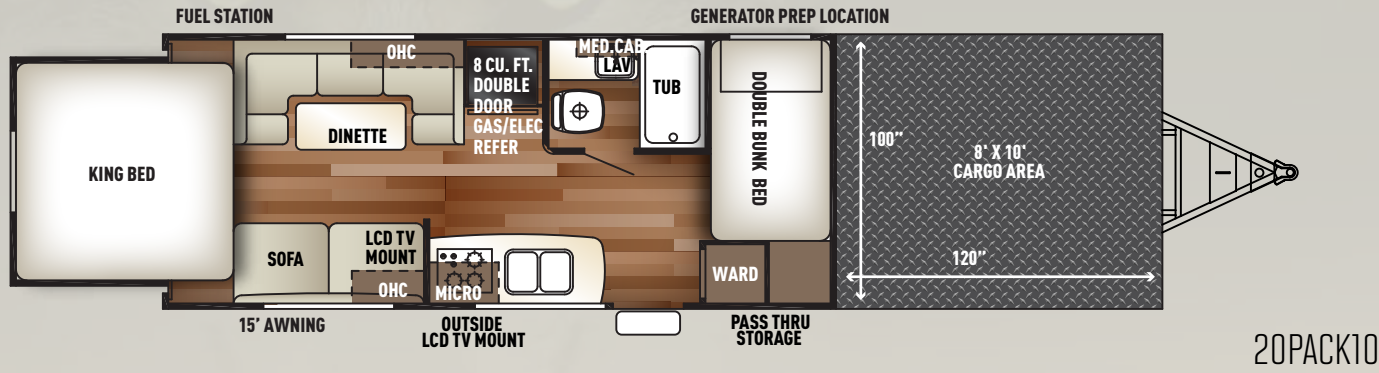


Q Friction hinge entry doors eliminate broken holdbacks and wind slamming your doors. Each door is designed to withstand up to 25mph wind gusts.

R Wolf Pack's standard fuel cells feature 30 gallons of fuel storage, along with gauge, pump and fuel nozzle

S All Wolf Pack s are prepped for power with standard generator prep. Prep includes its own compartment – 5.5KW on 5th wheels; 4KW on travel trailers.

WOLF PACK FLOORPLANS



STANDARD EQUIPMENT

- 35,000 btu Forced Air Ducted Furnace
- 6 Gallon Gas/Electric DSI Water Heater
- 8 cubic foot refer
- Bedroom Sliding Doors
- Black Tank Flush
- Cabinets in Bedroom
- Ducted A/C
- Faux Rock at Entertainment Center
- Large Exterior Folding Assist Grab Handle
- Night Shades
- Outside Shower With Hot And Cold Water
- Radial Tires
- Real wood doors and drawers
- Recycled Blown In Insulation
- Sky Light Over Bath
- Under Step LED LIGHT
- Widebody design
- AM/FM/DVD player with Bluetooth
- Wood blinds and night shades standard

OPTIONAL EQUIPMENT

- Gel Coat Sidewalls W/Aluminum Rims and Fender Skirts
- 15k A/C In Place Of 13.5k Standard
- Second Air Conditioner
- 4.0 Onan Generator (TT Only)
- 5.5 Onan Generator (FW's Only)
- Aluminum Rims
- Detachable Coil Spray Hose
- Electric Jacks (N/A 24PACK14)
- Enclosed Tanks
- Industrial Garage Rubber Floor
- Large LED TV
- Ramp Door Patio System (N/A 20PACK10)
- Removable Rear Room Edged Carpet (N/A 20PACK10)
- Roof Ladder
- Screen Wall / Tent Wall (N/A 20PACK10)
- Spare Tire
- Ultracold Weather Heated Holding Tank 12V Pads W/ Enclosed tanks
- Premium Oversize Sofa with Recliners

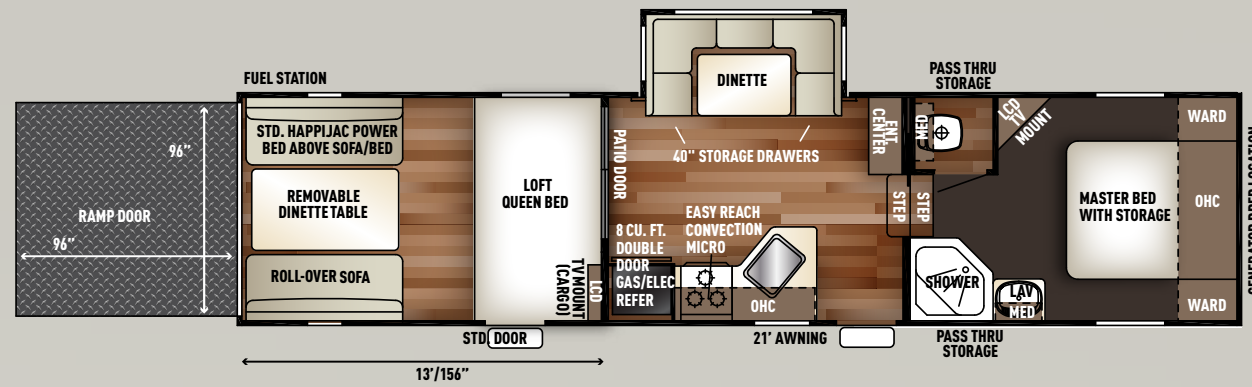


LIMITED

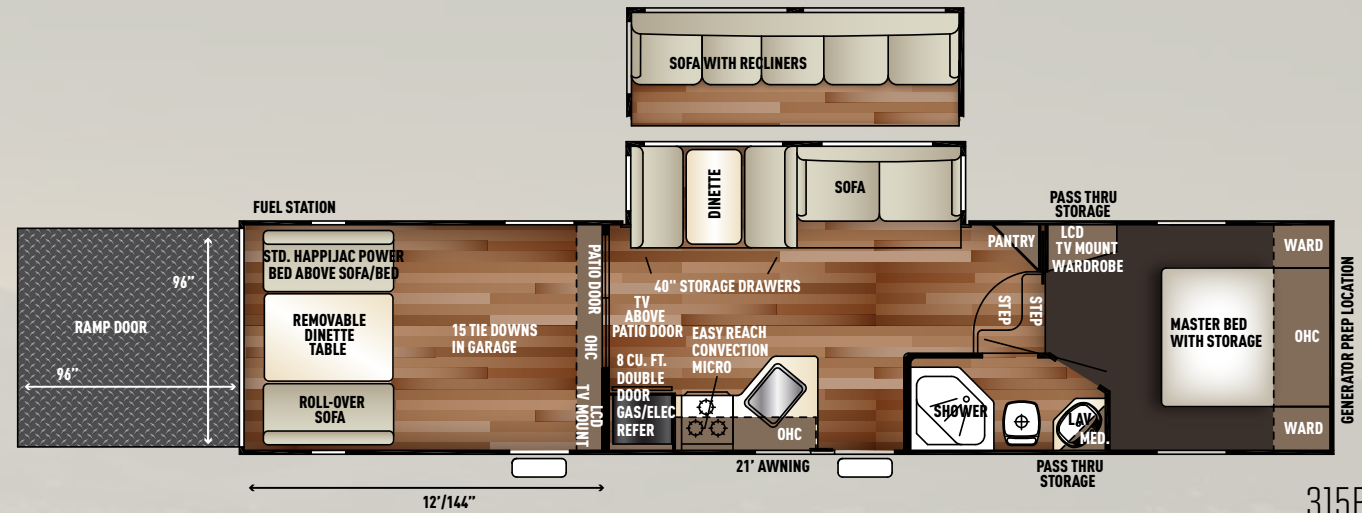
OPTIONAL WOLF PACK LIMITED PACKAGE

*Not all items available on all models

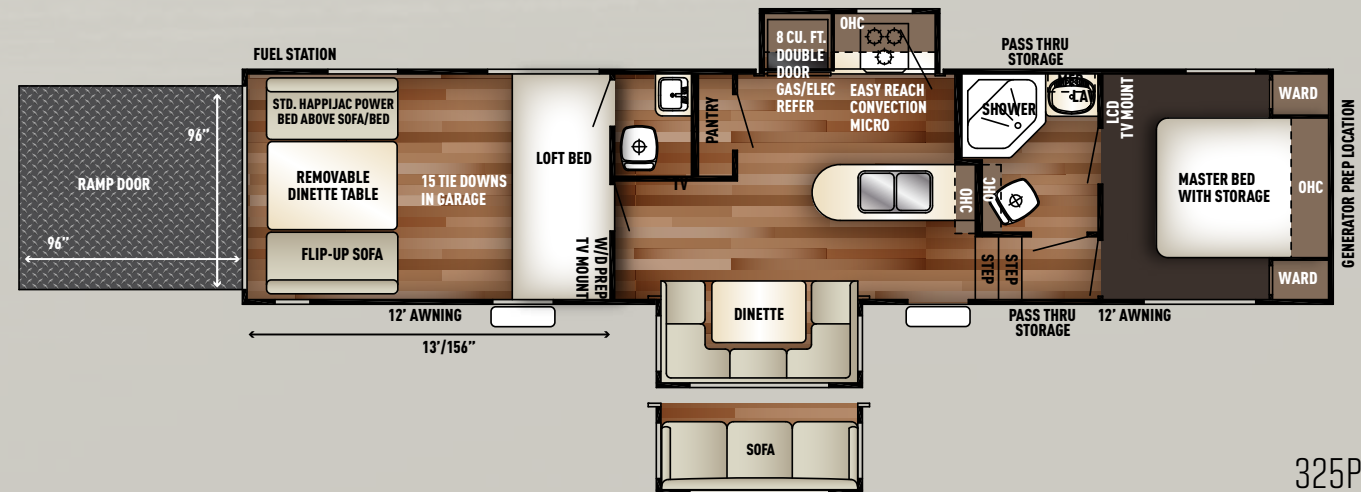
- 1/2 Convection Oven
- 40" Dinette Drawers (2)*
- 30 Amp Service W/Detachable Cord* (TT Only)
- 50 Amp Service W/Detachable Cord* (FW Only)
- Back Up Camera Ready
- Bathroom Fantastic Vent Fan
- Drop In Cooktop W/Glass Cover
- External Fuel Cells W/Pump
- External LED Strip Lighting
- Friction Hinge Door
- Generator Prep
- Happijac Bed Lift System*
- Internal Accent LED Strip Lighting
- LED Interior Lights
- Outside TV Bracket and Hook Ups
- Power Awning
- Power Tongue Jack (TT only)
- Pull Out Kitchen Faucet
- Rigid® Scare Light
- RVQ Quick Connect
- Seamless Countertop
- Sink Cover
- Solar Prep and Wiring
- Solid Wood Table
- Tire Pressure Monitors*
- Tongue and Groove Plywood Floors
- Undermount Sink



285PACK13



315PACK12



325PACK13

EXPERIENCE THE FUN WITH WOLF PACK.



- 1) Forest River, Inc. dealers are independently owned and operated businesses so priority service and scheduling is at their discretion and is often provided to customers that purchased their unit at that dealership.
- 2) Purchasing locally allows customers to establish meaningful relationships with a dealer, enhancing the RV experience through assistance with product questions, user tips or RV regulations for your state or country, and much more!
- 3) Canadian customers must meet requirements to bring an RV purchased out of the country to their home. These requirements may involve additional inspections and certifications, taxes and fees. Your local Canadian Dealer is a professional at meeting these requirements.
- 4) Scheduling timely warranty repairs and adjustments through a local dealership provides far greater flexibility and convenience to you, the customer!

Forest River, Inc. encourages our customers to purchase their Forest River products from a local dealership whenever possible for the following reasons:

It is the goal of Forest River, Inc. that all of our RV owners fully enjoy the RV experience and that customer satisfaction meets or exceeds their expectations!

TRAVEL TRAILERS

FIFTH WHEELS

	20PACK10	24PACK14	25PACK12	285PACK13	315PACK12	325PACK13
DRY HITCH WEIGHT	657-LBS.	1005-LBS.	1173-LBS.	2348-LBS.	2036-LBS.	TBA
UNLOADED VEHICLE WEIGHT	6171-LBS.	6306-LBS.	8721-LBS.	10123-LBS.	10762-LBS.	TBA
AXLE WEIGHT	5476-LBS.	5263-LBS.	7510-LBS.	7737-LBS.	8688-LBS.	TBA
SHIP WEIGHT	6133-LBS.	6268-LBS.	8683-LBS.	10085-LBS.	10724-LBS.	TBA
GVWR W/BRAKES	9985-LBS.	9985-LBS.	11333-LBS.	14122-LBS.	14036-LBS.	TBA
CARGO CARRYING CAPACITY	3814-LBS.	3679-LBS.	2612-LBS.	3999-LBS.	3274-LBS.	TBA
EXTERIOR LENGTH	35'-10"	31'-0"	37'-3"	37'-3"	39'-3"	39'10"
EXTERIOR HEIGHT W/ AC	11'-4"	12'-5"	12'-5"	13'-5"	13'-5"	13'-5"
EXTERIOR WIDTH	102"	102"	102"	102"	102"	102"
BEDROOM INTERIOR HEIGHT	78"	86"	86"	76"	76"	76"
FURNACE BTU	35,000	35,000	35,000	35,000	35,000	35,000
GREY CAPACITY	38-GAL.	38-GAL.	38-GAL.	38-GAL.	38-GAL.	38-GAL.
BLACK CAPACITY	38-GAL.	38-GAL.	38-GAL.	38-GAL.	38-GAL.	72-GAL.
FRESH CAPACITY	46-GAL.	46-GAL.	46-GAL.	100-GAL.	100-GAL.	100-GAL.
SOFA SIZE	68"	68"	N/A	N/A	68"	TBA
AWNING SIZE	15'	15'	15'	21'	21'	21'
CARGO AREA SIZE-OFF DS	120"	86"	144"	156"	144"	156"
CARGO AREA SIZE-DS	120"	220"	144"	156"	144"	156"
STORAGE HEIGHT	UNLIMITED	81"	81"	90"	90"	90"



Specification Definitions

GVWR (Gross Vehicle Weight Rating) - is the maximum permissible weight of the unit when fully loaded. It includes all weights, inclusive of all fluids, cargo, optional equipment and accessories. For safety and product performance do NOT exceed the GVWR.

GAWR (Gross Axle Weight Rating) - is the maximum permissible weight, including cargo, fluids, optional equipment and accessories that can be safely supported by a combination of all axles.

UVW (Unloaded Vehicle Weight)** - is the typical weight of the unit as manufactured at the factory. It includes all weight at the unit's axle(s) and tongue or pin and LP Gas. The UVW does not include cargo, fresh potable water, additional optional equipment or dealer installed accessories.

*Estimated average based on standard build optional equipment.

CCC (Cargo Carrying Capacity)** - is the amount of weight available for fresh potable water, cargo, additional optional equipment and accessories. CCC is equal to GVWR minus UVW. Available CCC should accommodate fresh potable water (8.3 lbs per gallon). Before filling the fresh water tank,

empty the black and gray tanks to provide for more cargo capacity.

** Estimated average based on standard build optional equipment

Each Forest River RV is weighed at the manufacturing facility prior to shipping. A label identifying the unloaded vehicle weight of the actual unit and the cargo carrying capacity is applied to every Forest River RV prior to leaving our facilities.

The load capacity of your unit is designated by weight, not by volume, so you cannot necessarily use all available space when loading your unit.



PRE-DELIVERY INSPECTION FACILITY

20,000 square feet of quality assurance. The bare essentials for a premium product. This state-of-the-art facility gives immediate daily feedback to production for quality assurance in every unit built.



YOUR WOLF PACK DEALER



Learn More
Scan this barcode using a QR Reader on your smart phone to learn more about Forest River.



A Berkshire Hathaway company.

All information contained in this brochure is believed to be accurate at the time of publication. However, during the model year, it may be necessary to make revisions and Forest River, Inc., reserves the right to make all such changes without notice, including prices, colors, materials, equipment and specifications as well as the addition of new models and the discontinuance of models shown in this brochure. Therefore, please consult with your Forest River dealer and confirm the existence of any materials, design or specifications that are material to your purchase decision.
Litho. U.S.A. FOR 1243 P / W: 2015.10.26