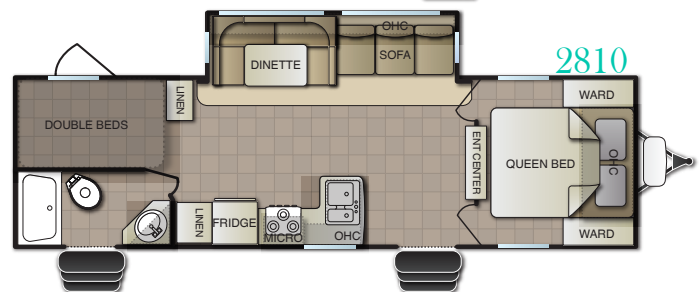
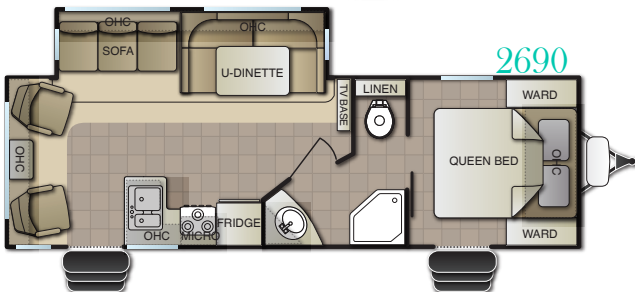
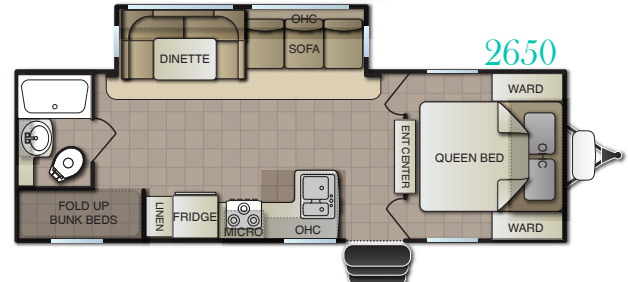
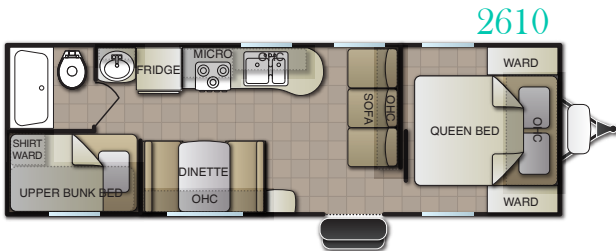
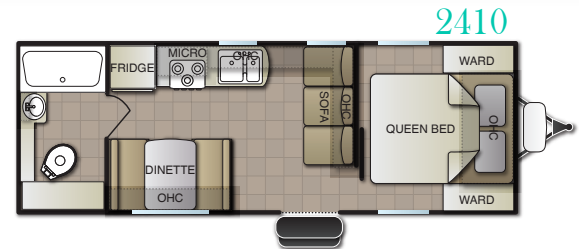
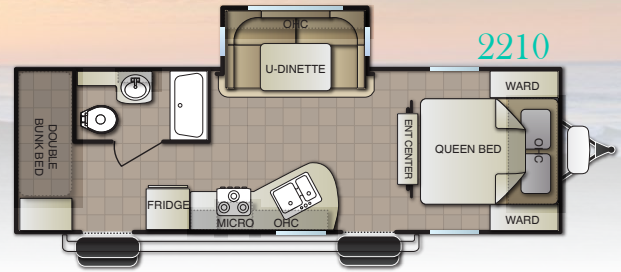


SURFSIDE



SPECIFICATIONS

MODEL	2110	2210	2250	2410	2610	2650	2690	2810
EXT LENGTH	25'-7"	28'-4"	26'-7"	26'-10"	29'-1"	28'-8"	29'-4"	31'-11"
EXT WIDTH	96"	96"	96"	96"	96"	96"	96"	96"
INT HEIGHT	78"	78"	78"	78"	78"	78"	78"	78"
GVWR	7,500	7,500	7,500	7,500	7,500	9,000	9,000	9,000
AXLE WEIGHT	3,898	4,370	3,910	3,690	4,080	5,100	5,350	5,195
HITCH WEIGHT	700	770	510	605	580	760	650	1,065
UVW	4,598	5,140	4,420	4,295	4,660	5,860	5,980	6,260
PAYLOAD	2,902	2,360	3,080	3,205	2,840	3,140	3,020	2,740
FRESH WATER	50GAL	50GAL	50GAL	50GAL	50GAL	50GAL	50GAL	50GAL
GREY WATER	40GAL	40GAL	40GAL	40GAL	40GAL	40GAL	40GAL	40GAL
BLACK WATER	40GAL	40GAL	40GAL	40GAL	40GAL	40GAL	40GAL	40GAL

NOTES: PCW reserves the right to change or discontinue at any time, without notice, prices, colors, materials, equipment, accessories, specifications, models, and packages, without incurring any obligations to make the same or similar changes to trailers previously sold. Colors shown may vary due to reproduction and printing processes. Unloaded vehicle weight (UVW) information is intended as a guide only and does not include water, fluids or popular options. Actual weight may vary. Payload capacity does not include the weight of water, fluids, or popular options. Weights and capacities are approximate and are subject to change without notice.

Interior Features

- 360 Degree TV Cabinet on Select Models
- A/C 13.5 BTU
- Ball Bearing Drawer Guides
- Central Command Center
- Fully Insulated Floors
- Furnace - 30,000 BTU
- Laminated Counter Tops with Edge
- Large Double Door Refrigerator
- Large Oven with Cooktop
- Microwave Oven
- Ottoman w/ Storage on Select Models
- Plush Rear Lounge Captain Chairs on Select Models
- Power Bath Vent
- Skylight Bath
- Stereo with Bluetooth
- Tub Surround
- Upgraded Floor Covering

Popular Options

- 15.0 A/C IPO 13.5
- A/C - Ducted IPO Direct
- Awning - Power IPO Manual
- Chrome Wheels (4)
- Fireplace (2210, 2650, 2810)
- Heat Pads
- Power Stabilizer Jacks

Exterior Features

- Awning - MANUAL
- Custom 3M Graphics
- Custom Built I Beam Chassis
- DSI Water Heater
- Dual LPG Bottles with Cover - 30LB
- Electric Brakes on All Wheels
- Exterior Ladder
- Full Weld Outriggers and Entry Step
- Heavy Duty Insulated Baggage Doors
- Holding Tanks - 50/40/40
- Metal Fender Skirts
- One Piece Rubber Roof
- Outside Shower
- Outside Speakers (2)
- Radius Entry Door with Grab Handle
- Spare Tire & Carrier
- Stab Jacks (4)

- Tongue Jack - Power IPO Manual
- Triple Bunk - 2610
- TV Antenna w/ Cable Hook Up
- TV LCD 24"
- TV LCD 32"
- Winterizing Kit - "Anti Burst"

Pacific Coachworks®

Pacific Coachworks

3411 N. Perris Blvd.

Perris, CA 92571

www.pacificcoachworks.com

(951) 686-7294

Go RVing

RVIA
RECREATION VEHICLE
INDUSTRY ASSOCIATION



Find us on...



contact your local dealer

All information included in this brochure is the latest at the time of publication. Pacific Coachworks reserves the right to make changes and to discontinue models without notice or obligation. Photos in this brochure may show optional equipment or props used for photography purposes only.

All recreational vehicles built by Pacific Coachworks, Inc. include a one year factory warranty. Roadside Assistance via Coach-Net is also included.