

Berkshire

BERKSHIRE | BERKSHIRE XL | BERKSHIRE XLT

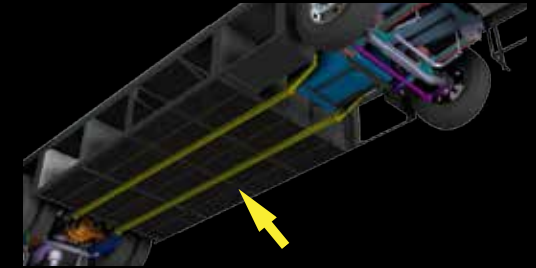


TRU-BRACE

Forest River Diesel Chassis Upfit Support System



Your home on wheels needs a solid foundation, that is why your Forest River Diesel Chassis is upfit by MORryde.



Structure built on a fixture table for optimum leveling and squareness. Laser cutting +/- 0.010. Bending within +/- 0.01 degree.

ORIGINAL CHASSIS

UPFIT WITH THE TRU-BRACE™ REINFORCED FRAME



Aluminized Steel Side Skirts *prevent rust* and *prolong the life* of the structure

Side skirts assembled as one piece to *minimize seams* and *prevent rust creep*

Upgraded from molded plastic, the steel bays hold *more weight* for your gear

The Tru-Brace™ reinforcements *strengthen the frame*, *reduce chassis flex* and *minimize the springboard effect* that whips the back of your unit up and down over rough roads.

DRIVE THE DIFFERENCE.

You expect more, we deliver more.

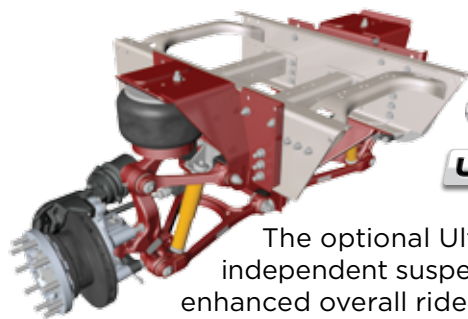
At Berkshire we know your standards are high, and we strive not to meet but to exceed your expectations. From the ground up, the Berkshire series is designed to bring you complete comfort on the road. In our effort to bring you unparalleled excellence, we proudly utilize only the finest components and building processes in the industry as a sign of our dedication to your satisfaction.



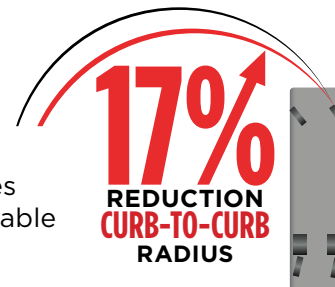
The XC-R chassis offers you greater horsepower and torque options. The design also features a lowered rear frame rail, allowing for a flat floor throughout the entire coach and more floorplan configurations.



Introducing the V-Ride™ Rear RV Suspension System from FCCC. As the first ever single axle suspension rated at 21,000 pounds and higher, it's designed for today's demanding luxury motorhome owners- who want the ability to carry more gear, the freedom to equip their interiors with premium amenities, and a comfortable, confident driving experience.*



The optional UltraSteer I-Series features an independent suspension on the tag axle. This provides enhanced overall ride quality and stability, with comparable weight capacity and turning angle to the B-Series.*



*Available on XLT models only.

CONSTRUCTION BENEFITS



Berkshire Construction Benefits:

1. For quality assurance, all construction takes place in a single facility. **2.** Auxiliary air chuck on 2" insulated firewall. **3.** Neoprene isolator between chassis and floor eliminates vibration. **4.** Steel entrance steps insulated with plywood. **5.** 3" block foam insulated floor structure. **6.** Easy interior dash access. **7.** Auxiliary LP hook-up on curb side. **8.** All firewall openings sealed with grommets to eliminate electrical shorts. **9.** Minimal connections on all water lines. **10.** Our fiberglass insulated dash is integrated with the front cap.

EXTERIOR FEATURES



1. All Berkshires feature an outside entertainment center. The Berkshire comes with a 32" LED HDTV, the Berkshire XL and Berkshire XLT feature a 40" LED HDTV with a radio and an auxiliary jack.

2. The Berkshire series features a standard slide out generator. 6.0kW on the Berkshire, 8.0kW on the Berkshire XL and the Berkshire XLT features the 8.0kW with an optional 10.0kW upgrade available.



3. Easily access electrical fuses with our exclusive no fuss schematic.

4. Berkshire's water manifold system with whole unit water filter and exterior shower.



5. Standard café compartment doors with pass thru storage and optional slide-out storage tray.

6. Equalizer Systems hydraulic landing gear. Automatic, one touch operation levels your motorhome in less than two minutes, operating each leg independently in a sequential process.

EQUALIZER
SYSTEMS

Berkshire





Berkshire



Berkshire





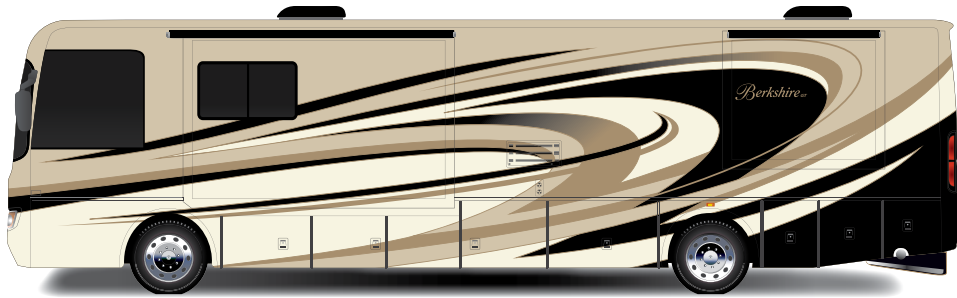
ENJOY COMFORTABLE ELEGANCE.

38A MAUI BREEZE LATTE INTERIOR | LIVING AREA | BEDROOM | GUEST BATH | COCKPIT | BUNK AREA | MASTER BATH

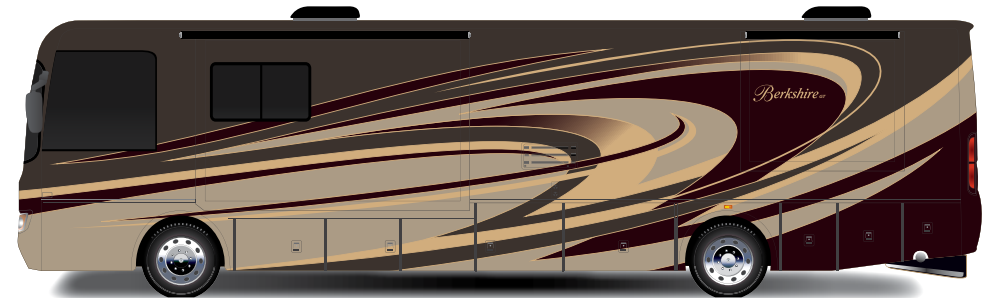


Berkshire

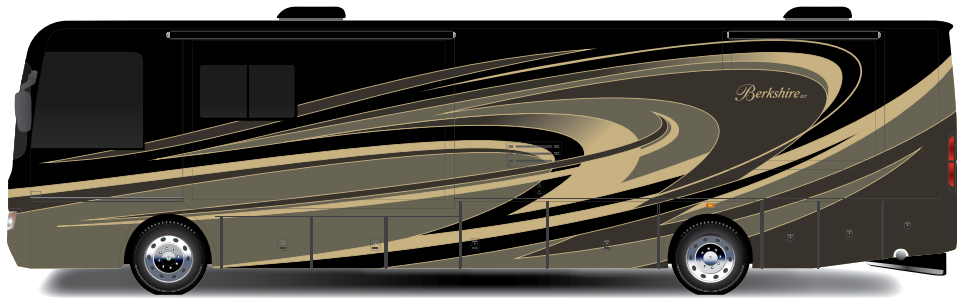
PAINT PACKAGES | DECOR OPTIONS



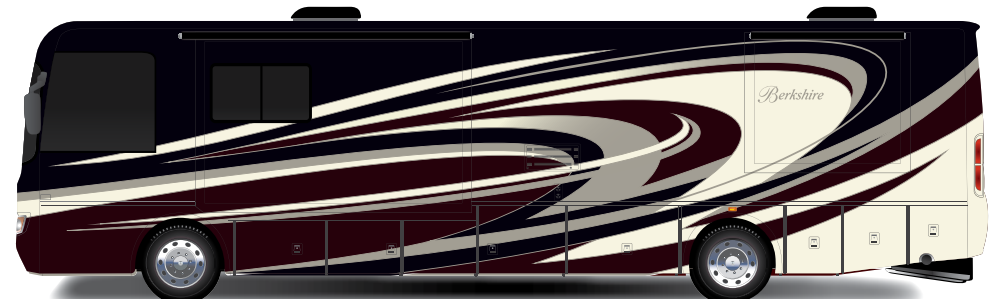
CASHMERE SANDS



WOODLAND SUNSET

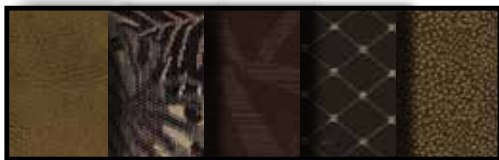


MYSTIC SHADOW

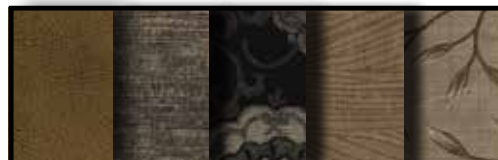


EBONY GLAZE

MAUI BREEZE LATTE



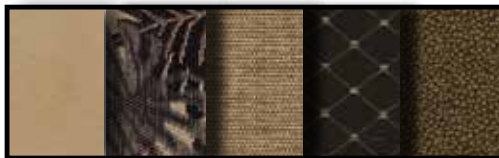
KONA COFFEE LATTE



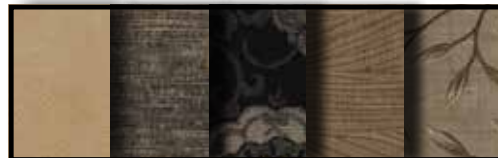
GRAND WAILEA LATTE



MAUI BREEZE CREAM



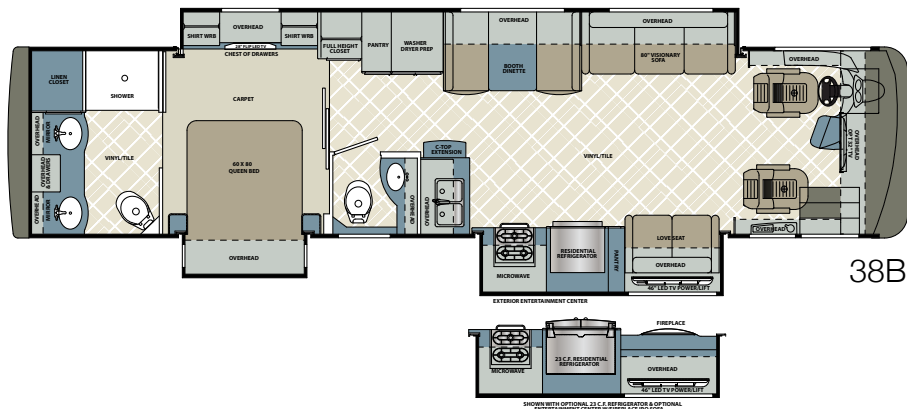
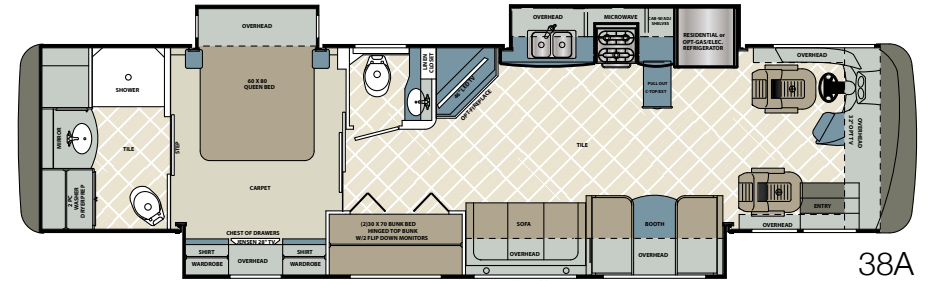
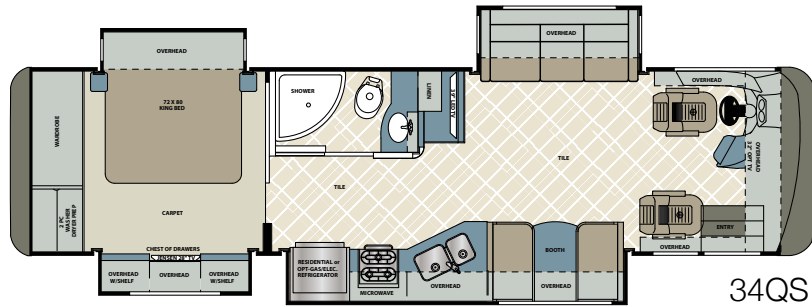
KONA COFFEE CREAM



GRAND WAILEA CREAM



FLOORPLANS | SPECIFICATIONS



The Berkshire series utilizes the Freightliner XCR Raised Rail Chassis, a Cummins ISB turbo diesel 6.7 liter (340 HP at 2800 RPM, 700 ft. lbs. torque at 1600 RPM), and an Allison 2500-MH 6-Speed Automatic Transmission

Floorplan	Length (Feet)	GVWR (Lbs.)	GCWR (Lbs.)	GAWR Front (Lbs.)	GAWR Rear (Lbs.)	Wheelbase (Inches)	Height* (Feet)	Width* (Inches)	Basement storage* (Cu. Ft.)	Awning (Feet)	Fresh Tank (Gal.)	Gray Tank (Gal.)	Black Tank (Gal.)	LP Tank	Furnace (BTU's)	Hot Water
34QS	35' 7"	27,910	32,910	10,410	17,500	206"	12' 5"	100"	130'	14' 7"	86	66	42	24.5	35,000	Continuous
38A	39' 5"	27,910	32,910	10,410	17,500	252"	12' 5"	100"	183'	18' 0"	86	66	42	24.5	42,000	Continuous
38B	39' 5"	27,910	32,910	10,410	17,500	252"	12' 5"	100"	183'	18' 0"	86	66	42	24.5	42,000	Continuous

Please see back cover for more information regarding weights.
*Approximate

Automotive & Cockpit Standards

- Freightliner XCR Raised Rail Chassis
- Cummins ISB turbo diesel 6.7 liter 340 HP at 2800 RPM, 700 ft. lbs. torque at 1600 RPM
- Allison MH-2500 6-Speed Automatic Transmission
- 120v Engine Heater 750W
- 22.5" Polished Aluminum Wheels
- Michelin XRV 255/80 R22.5 14 ply radial tires
- Trailer hitch capacity, 5,000 Lbs.
- Allison electronic push button shifter
- 100 gallon, locking dual fill fuel tank
- 13 Gallon DEF Tank
- LCD engine message center
- Day time running lights
- 7-Pin tow power connector
- 18.7 CFM air compressor
- Farr Eco-air cleaner
- Air filter restriction indicator
- Fuel/water separator
- Brake line air dryer w/heater
- Automatic, heated moisture ejectors
- Power steering
- Washer/wiper with intermittent function
- 160 amp alternator
- Two (2) 1900 CCA at 0 degree Fahrenheit, maintenance free batteries
- Full air ABS brakes with auto slack adjuster
- Variable exhaust brake
- Telescopic/tilt steering wheel
- Neway air suspension front and rear axles
- Sachs custom tuned shock absorbers
- 55 degree wheel cut
- Auto air suspension deflation system
- Cross flow, rear mounted radiator
- Transmission oil cooler
- 5 year / 100,000 mile coolant (some maintenance required)
- 4-Spoke VIP black steering wheel
- Electronic cruise control w/ high idle
- Multiple auxiliary charging ports at dash
- Power stepwell cover
- Entry assist handle

Construction & Exterior Standards

- Fiberglass front and rear caps
- Full body painted exterior (Sikkens 4X clear coat)
- Four (4) point fully auto hydraulic leveling system w/ auto air dump
- Steel basement structure
- Tru-Brace chassis support system
- Rust resistant aluminized steel chassis skirts
- Diamond shield front mask protective film
- 1 Piece fiberglass roof
- Top-mount remote exterior/heated/mirrors/with cameras
- Frameless dual pane, dark tint windows
- Automotive foam and Ziebart seal undercoating
- Carefree power door awning
- Carefree Travl'r electric patio awning with LED lighting
- Carefree slide out topper with cover (full/wall slide)
- Carefree slide toppers
- Full height strut assisted compartment doors with full pass through storage
- "One Key" system, ext-compartment, entry door & fuel fill doors
- Ducted A/C System
- Crowned and layered vacuum bonded fiberglass roof
- Vacuum bonded 3" floor w/tubular aluminum frame
- Gel coated vacuum bonded aluminum tube w/ fiberglass & block foam insulation sidewalls
- 1/2" Structure wood flooring
- Block foam polystyrene insulation
- 30" Entryway
- In wall channeled drains for A/C's
- Tubular steel firewall w/polystyrene insulation
- Shower skylight
- Lighted exterior assist handle
- Two piece rear ladder
- 84" interior ceiling height
- PTL Entrance door with deadbolt
- Auxiliary air chuck (front firewall)
- Auxiliary LP supply, quick connect (passenger side)
- Full length mud flap w/ chrome Forest River name
- Auxiliary LP supply, quick connect (passenger side)

Electrical Standards

- 50A service with auto transfer switch & 30' power cord
- 6kW Onan diesel generator with manual slide tray
- Electronic battery disconnect switch
- Remote generator start switch (on dash)
- LED ceiling light package
- Driver and Passenger LED ceiling map lights
- Cosmetic bathroom lighting
- Decorative wall and dinette lighting where applicable
- Auxiliary engine start switch at dash
- Individual reading lights bed overhead
- 2000w modified Sine inverter/converter
- Euro style 12v Switches
- Auto generator start module
- Four (4) Six volt deep cycle house batteries
- Two (2) Master electric shut off switches
- Auto/power entrance step
- Patio light
- Easy access fuse/load centers
- Dimmer control living room and bedroom ceiling lights

Plumbing Standards

- Variable speed constant pressure water pump
- Bath - Solid surface under mount sink
- Kitchen - Stainless steel under mount sink
- Whole house water filter
- Black water tank flush system
- Kitchen-Single lever faucet with pull-out sprayer
- Double lever lavatory faucets
- One piece fiberglass shower with glass door
- Porcelain china toilet
- Techma-macerator toilet (rear bath) (n/a 34QS)
- Clean easy exterior shower hose
- Individual zoned hot/cold manifold water supply system

Driver/Passenger Area Standards

- One piece windshield
- Power front night shade
- Manual passenger and driver window night shade
- Metallic cherry wood grain dash panels
- Fog lights
- Dash radio with integrated color back-up and side camera package with navigation
- Wrap around cockpit with nine (9) gauge instrument cluster
- Driver 360 degree swivel and recline seat with 6-way power adjustment
- Passenger 360 degree swivel and recline seat with footrest
- Leatherette Driver/Passenger seat
- Lighted step well
- Two (2) Defroster fans with high and low settings
- Driver/passenger cup holders
- Automotive dash AC/Heater with deluxe controls
- Tile step well

Entertainment Standards

- 46" LED TV, living room (standard 38A, 38B)
- 40" LED TV, living room (standard 34QS)
- 28" LED TV, bedroom
- 32" LED TV, exterior
- Sound Bar with radio, integrated sub and bluetooth
- Two flip down LCD monitors with DVD and AV inputs (1 per bunk) (38Aonly)
- Roof mount Winegard Trav'ler satellite prep
- Cable TV prep
- Hi-Definition digital TV antenna with signal strength indicator
- High Definition Cat 6 matrix signal distribution
- Sirius/XM satellite radio capable
- Blu-ray DVD Player

Interior Standards

- Luxury Vinyl tile
- Hardwood cabinet fronts
- Raised panel hardwood cabinet doors
- Hidden hinges and bar pull style cabinet hardware

- Carpeted living room and dining slide-outs
- Window valances
- Bedroom Carpet with padding
- Visionary Hide-A-Bed sofa (n/a with L-sofa option-34QS)
- Love seat sofa with storage (38B only)
- Solid surface kitchen/dinette countertops with flush mount sink and stove cover
- Laminate on all other countertops except kitchen/dinette
- Soft close ball bearing drawer guides in kitchen
- Full extension ball bearing metal drawer guides
- Galley storage compartment for range and sink covers
- Kitchen Pantry (38B only) (omit with 23 cu.ft option 38B)
- Pull out kitchen countertop (n/a 34QS)
- Bi-fold doors/pantry, bunk beds (38A only)
- "Soft Touch" Dream booth dinette with storage underneath
- "Soft Touch" padded ceiling
- Roller style day/night shades (living area)
- Large bedside wardrobe (34QS only)
- Dresser drawers and wardrobe type cabinets
- 72" x 80" king pillow top with bedspread and decorative pillows (standard 34QS)
- 60" x 80" queen pillow top with bedspread and decorative pillows (standard 38A, 38B)
- Hardwood headboard with padded insert
- Bedroom, overhead cabinets
- Bedroom night stands
- Mirrored medicine cabinets
- Towel bar, toilet paper holder and towel ring

Appliances Standards

- 13,500 BTU with heat pump (front), 13,500 BTU (rear), low profile A/C's
- Holding tank heat pads
- Continuous flow tankless gas hot water heater
- 35,000 BTU furnace (standard 34QS)
- 42,000 BTU furnace (standard 38A, 38B)
- 30" OTR convection microwave oven
- 2 Door residential refrigerator

- Sealed 3-burner stainless recessed cook top
- Power fan in bathroom
- Fan in galley with built in thermostat control
- Washer/dryer prep

Safety Standards

- 110 GFI protected circuits
- Carbon monoxide detector
- LP gas detector with auto tank shutoff
- Smoke alarm
- Egress window
- Surface mounted fire extinguisher

Interior Options

- Expandable L-Lounge Visionary sofa (34QS only)

Exterior Options

- Slide tray in basement compartment

Driver/Passenger Area Options

- 32" LED TV, front overhead

Appliance/Electronic Options

- 15,000 BTU (front) w/heat pump, 15,000 A/C (rear) low profile A/C's
- 23 cu. ft. stainless steel french door refrigerator (38B only)
- Trav'ler (Winegard) satellite antenna Direct TV (US)-Shaw (Canada)
- Entertainment center with electric fireplace (IPO sofa on 38B)
- Electric fireplace
- Stackable washer/dryer

Berkshire

Berkshire_{XL}





Berkshire
XL



Berkshire
XL





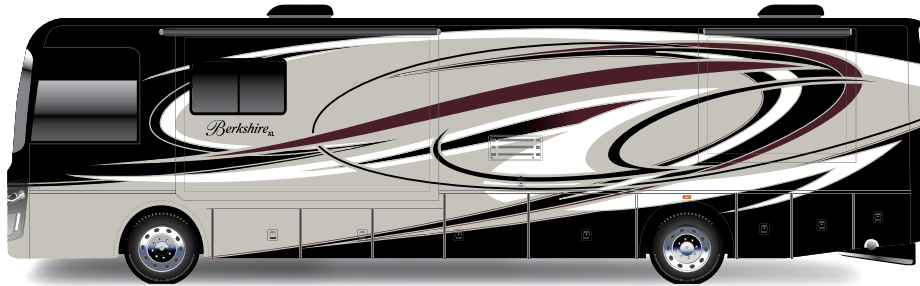
EXPERIENCE YOUR OWN PRIVATE OASIS.

40BH ONYX INTERIOR | KITCHEN | COCKPIT | BUNK AREA | L-SHAPED SOFA ENTERTAINMENT AREA | BEDROOM | BATHROOM



Berkshire_{XL}

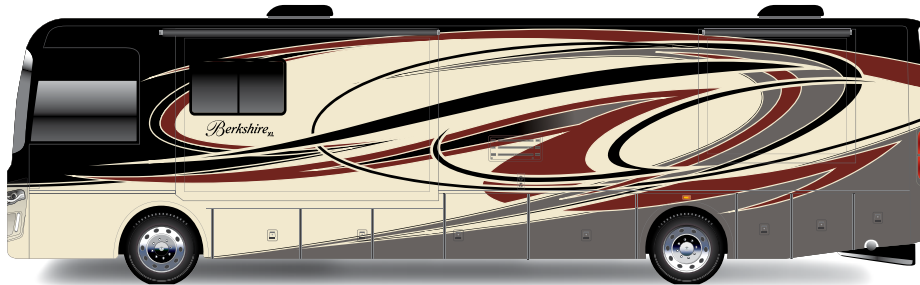
PAINT PACKAGES | DECOR OPTIONS



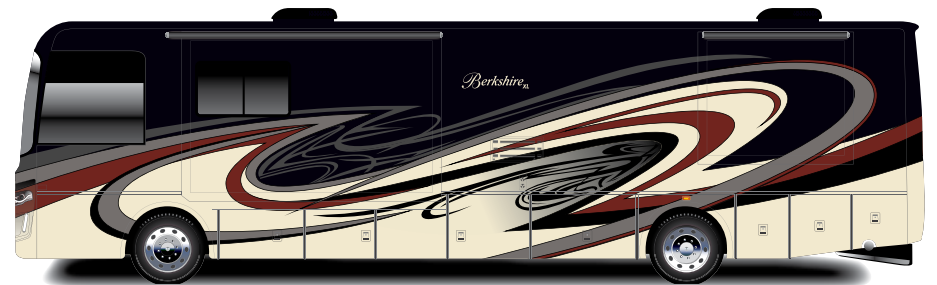
WINDSOR PARK



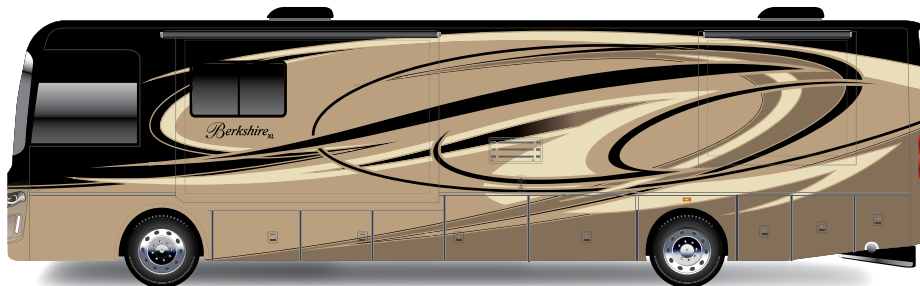
CARAMEL MOCHA UPGRADE OPTION



ENGLISH BURGUNDY



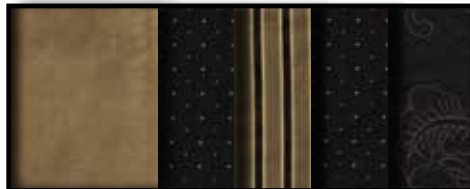
VINTAGE CLASSIC UPGRADE OPTION



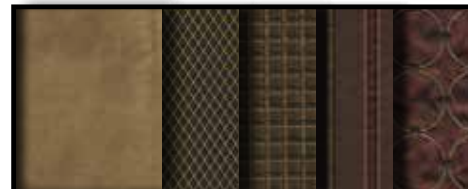
LONDON MIST



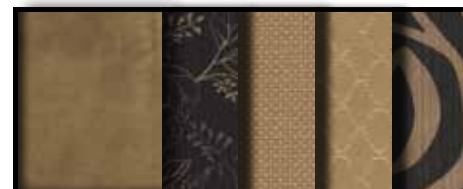
ONYX



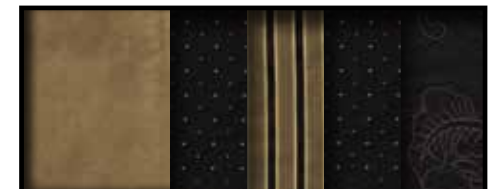
TOPAZ



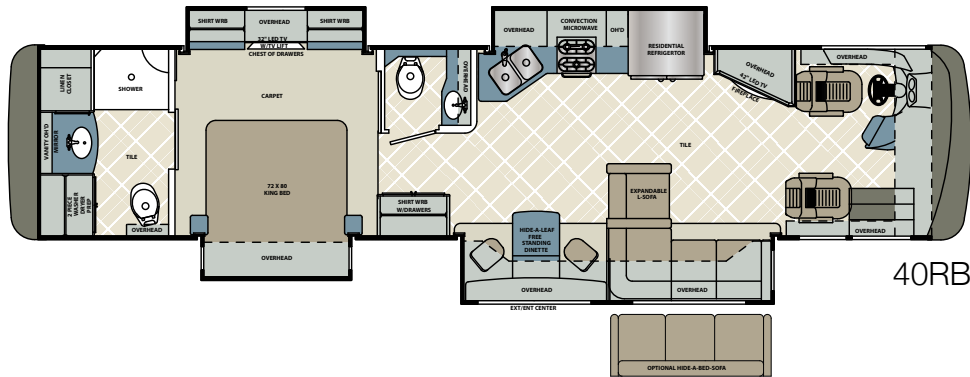
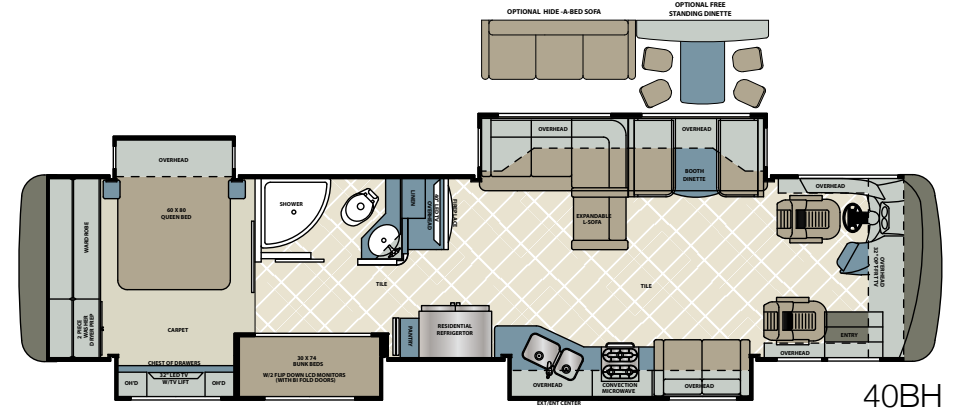
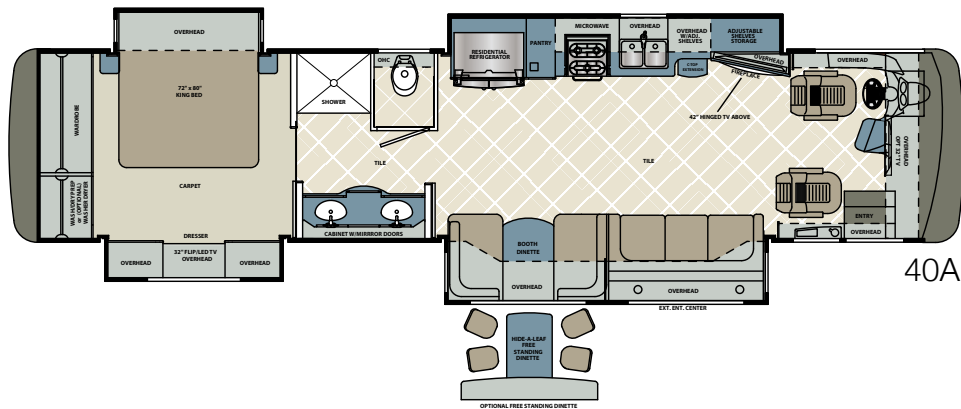
SAPPHIRE



WHITE DIAMOND



FLOORPLANS | SPECIFICATIONS



The Berkshire XL series utilizes the Freightliner XCR Raised Rail Chassis, a Cummins ISB 6.7 turbo diesel, 360 HP @ 2400RPM, 2600 GOV RPM 800 LB/FT @ 1800 RPM and an Allison 3000MH 6-speed transmission.

Chassis option: Cummins ISL9 turbo diesel, 380 HP @ 2000RPM, 2200 GOV RPM 1150 LB/FT @ 1400 RPM

Floorplan	Length* (Feet)	GVWR (Lbs.)	GCWR (Lbs.)	GAWR Front (Lbs.)	GAWR Rear (Lbs.)	Wheelbase (Inches)	Height* (Feet)	Width* (Inches)	Basement storage* (Cu. Ft.)	Awning (Feet)	Fresh Tank (Gal.)	Gray Tank (Gal.)	Black Tank (Gal.)	LP Tank	Furnace (BTU's)	Hot Water
40A	41' 0"	32,000	42,000	12,000	20,000	266"	12' 5"	100"	205'	13' 6"	86	66	42	24.5	40,000	Continuous
40BH	41' 0"	32,000	42,000	12,000	20,000	266"	12' 5"	100"	205'	10' 3"	86	66	42	24.5	40,000	Continuous
40RB	41' 0"	32,000	42,000	12,000	20,000	266"	12' 5"	100"	205'	12' 10"	86	66	42	24.5	40,000	Continuous

Please see back cover for more information regarding weights.
*Approximate

Automotive & Cockpit Standards

- Freightliner XCR Raised Rail Chassis
- Cummins ISB 6.7 turbo diesel, 360 HP @ 2400RPM, 2600 GOV RPM 800 LB/FT @1800 RPM
- Allison 3000MH 6-speed transmission
- 120V Engine Heater 750W (1000W with 380ISL Engine Option)
- 22.5" Polished Aluminum Wheels
- Michelin XZE2 275/80 R22.5 14 ply radial tires
- Trailer hitch capacity, 10,000 Lbs.
- Allison electronic push button shifter
- 100 gallon, locking dual fill fuel tank
- 13 Gallon DEF Tank
- LCD engine message center
- Day time running lights
- 7-Pin tow power connector
- 18.7 CFM air compressor
- Farr Eco-air cleaner
- Air filter restriction indicator
- Fuel/water separator
- Brake line air dryer with heater
- Automatic, heated moisture ejectors
- Power steering
- Washer/wiper with intermittent function
- 160 amp alternator
- Two (2) 1900 CCA at 0 degree Fahrenheit, maintenance free batteries
- Full air ABS brakes with auto slack adjuster
- Variable exhaust brake
- Telescopic/tilt steering wheel
- Neway air suspension front and rear axles
- Sachs custom tuned shock absorbers
- 55 degree wheel cut
- Auto air suspension deflation system
- Cross flow, rear mounted radiator
- Transmission oil cooler
- 5 year / 100,000 mile coolant (some maintenance required)
- 4-Spoke VIP steering wheel
- Electronic cruise control with high idle
- Multiple auxiliary charging ports at dash
- Power stepwell cover
- Entry assist handle

Construction & Exterior Standards

- Fiberglass front and rear caps
- Full body painted exterior (Sikkens 4X clear coat)
- Four (4) point fully auto hydraulic leveling system with auto air dump
- Tru-Brace chassis support system
- Rust resistant aluminized steel chassis skirts
- Diamond shield front mask protective film
- 1 Piece Fiberglass Roof
- Top-mount remote exterior/heated/mirrors/with cameras
- Frameless dual pane, dark tint windows
- Automotive foam and Ziebart seal undercoating
- Carefree power door awning
- Carefree Travl'r electric patio awning with LED lighting
- Carefree slideout topper w/cover (full/wall slide) (40RB only)
- Carefree slideout toppers
- Full height strut assisted compartment doors with full pass through storage
- "One Key" system, ext-compartment, entry door & fuel fill doors
- Quiet integrated A/C intake/ducting roof system
- Crowned and layered vacuum bonded fiberglass roof
- Vacuum bonded 3" floor w/Tubular aluminum frame
- Gel coated vacuum bonded aluminum tube with fiberglass and block foam insulation sidewalls
- 1/2" structure wood flooring
- Block foam polystyrene insulation
- 30" Entryway
- In wall channeled drains for A/C's
- Steel basement construction
- Tubular steel firewall with polystyrene insulation
- Shower Skylight
- Lighted exterior assist handle
- Two piece rear ladder
- 84" interior ceiling height
- PTL Entrance door with deadbolt
- Auxiliary air chuck (front firewall)
- Auxiliary LP supply, quick connect (passenger side)
- Full length mud flap with chrome Forest River name
- Slide tray in basement compartment

Electrical Standards

- 50A service w/auto transfer switch & 30' power cord
- 8kW Onan diesel generator with manual slide tray
- Electronic battery disconnect switch
- Remote generator start switch (on dash)
- LED Ceiling light package
- Driver & Passenger LED ceiling map lights
- Cosmetic bathroom lighting
- Decorative wall & dinette lighting where applicable
- Auxiliary engine start switch at dash
- Individual reading lights bed overhead
- 2000w pure sine inverter/converter
- Euro style 12v Switches
- Auto generator start module
- Four (4) Six volt deep cycle house batteries
- Two (2) Master electric convenience shut off switches
- Auto/power entrance step
- Patio light
- Easy access fuse/load centers
- Dimmer control living room and bedroom ceiling lights

Plumbing Standards

- Variable speed constant pressure water pump
- Bath - Solid surface under mount sink
- Kitchen - Stainless steel under mount sink
- Whole house water filter
- Black water tank flush system
- Kitchen- High rise single lever faucet with pull-out sprayer
- Double lever lavatory faucets
- One piece fiberglass shower with glass door
- Porcelain china stool
- Techma-macerator stool (rear bath) (40RB only)
- Clean easy exterior shower hose
- Individually zoned hot/cold manifold water supply system

Driver/Passenger Area Standards

- One piece windshield
- Power front night and day shade
- Manual passenger & driver windows day/night shade
- Black pearl burl dash panels
- Fog lights
- Dash radio w/ integrated color back-up and side camera pkg with navigation
- Wrap around cockpit with nine (9) gauge instrument cluster
- Driver 360 degree swivel and recline seat w/ 6-Way power adjustment
- Passenger 360 degree swivel & recline seat with power footrest
- Soft touch Flexsteel driver/passenger seat
- Passenger side console
- Lighted step well
- Two (2) Defroster fans with high and low settings
- Driver/passenger cup holders
- Automotive dash AC/Heater with deluxe controls
- Tile with solid surface edged step well
- Premium Freightliner gauge package with chrome bezels

Entertainment Standards

- 40" LED TV, living room (40A only)
- 42" LED TV, living room (n/a 40BH)
- 42" LED TV, living Room, with slide (40BH only)
- 32" LED TV, bedroom
- 32" LED TV, front dash overhead (n/a 40RB, 40A)
- Hi-Fi sound bar with Bluetooth
- Roof mount Winegard Trav'ler satellite prep
- Two flip down LCD monitors with DVD and AV inputs (1 per bunk) (40BH only)
- Cable TV prep
- Hi-Definition digital TV antenna with signal strength indicator
- High definition cat 6 matrix signal distribution
- Sirius/XM satellite radio capable
- Blu-ray DVD Player
- Exterior entertainment center in sidewall: 40" TV & radio with auxiliary jack

Interior Standards

- Polished porcelain tile
- Native hardwood cabinetry
- Hidden hinges and pull style cabinet hardware
- Carpeted living room and dining slideouts
- Window valances
- Bedroom carpet with padding
- "Soft Touch" love seat (40BH only)
- "Soft Touch" Expandable sofa (40BH, 40RB)
- Polished solid surface kitchen/dinette countertops with flush sink and stove covers
- Polished solid surface backsplash with tile inserts in the kitchen and bathroom
- Soft close ball bearing drawer guides in kitchen
- Full extension ball bearing metal drawer guides
- Galley storage compartment for range and sink covers
- Kitchen pantry (n/a 40RB)
- Pull out kitchen countertop (40RB only)
- Bi-fold doors, bunk beds (40BH only)
- "Soft Touch" Dream booth dinette with storage (40BH only)
- "Soft Touch" padded ceiling
- Roller style day/night shades
- Large bedside wardrobe (n/a 40RB)
- Dresser drawers and wardrobe type cabinets
- 72"x 80" Serta king bed w/bedspread and decorative pillows (standard 40RB, 40A)
- 60"x 80" Serta queen bed w/bedspread and decorative pillows (standard 40BH)
- Hardwood headboard with padded insert
- Contoured overhead cabinets in slide rooms
- Bedroom night stands
- Mirrored medicine cabinets
- "Villa" dinette/sofa ensemble (40A only)
- Towel bar, toilet paper holder and towel ring

Appliance Standards

- 15,000 BTU w/heat pump (front), 15,000 BTU (rear), low profile A/C's
- Holding tank heat pads
- Continuous flow gas water heater
- (2) Dual zoned 20,000 BTU furnaces
- 30" OTR convection microwave oven

- 23 cu. ft. Residential French door refrigerator with ice maker
- Sealed 3-burner stainless recessed cook top
- Power fan in bathroom
- Fan in galley with built in thermostat control
- Washer/dryer prep
- Electric fireplace

Safety Standards

- 110 GFI protected circuits
- Carbon monoxide detector
- LP gas detector w/auto tank shutoff
- Smoke alarm
- Egress window
- Surface mounted fire extinguisher

Chassis Option

- Cummins ISL9 turbo diesel , 380 HP @ 2000RPM, 2200 GOV RPM 1150 LB/FT @1400 RPM

Interior Options

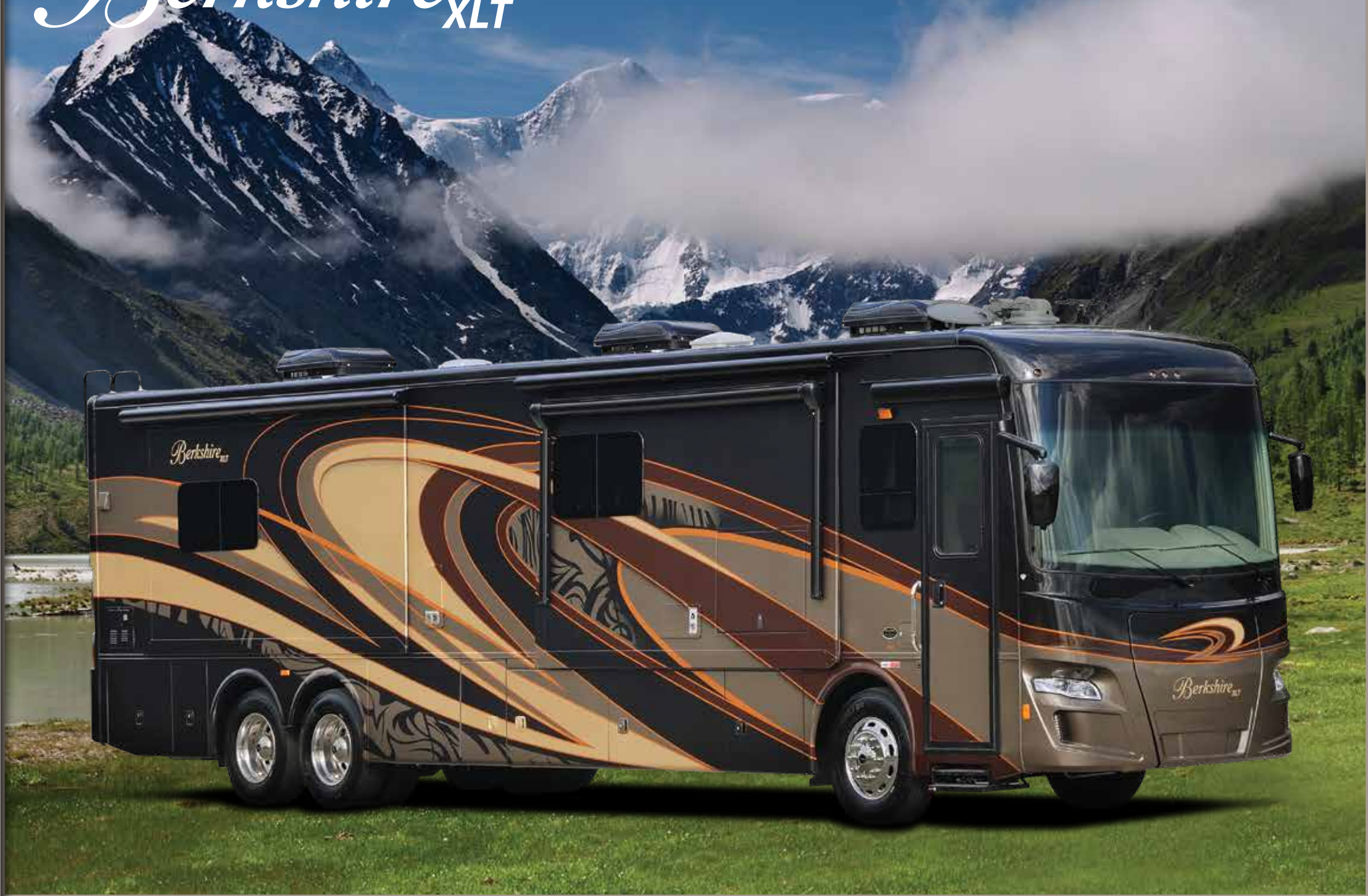
- Hide-A-Bed sofa (40BH, 40RB)
- Free-standing dinette with hutch and four (4) chairs (40A, 40BH)

Appliance/Electronic Options

- Trav'ler (Winegard) satellite antenna Direct TV (US)- Shaw (Canada)
- Stackable washer/dryer

*Berkshire*_{XL}

Berkshire_{XLT}



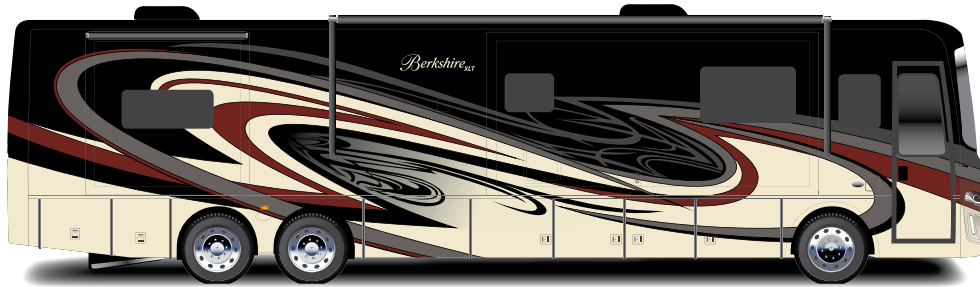


Berkshire
XLT

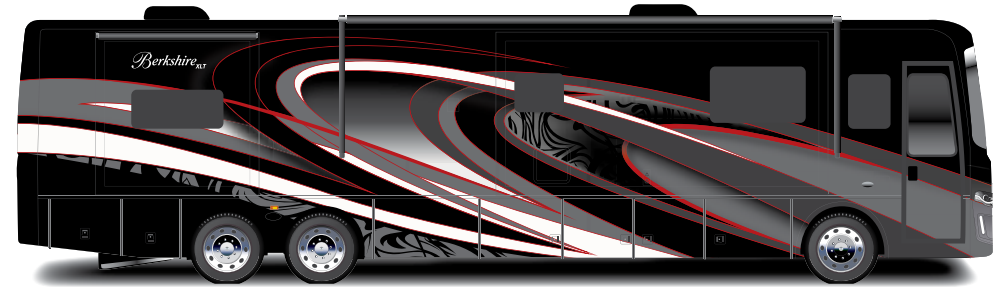


Berkshire_{XLT}

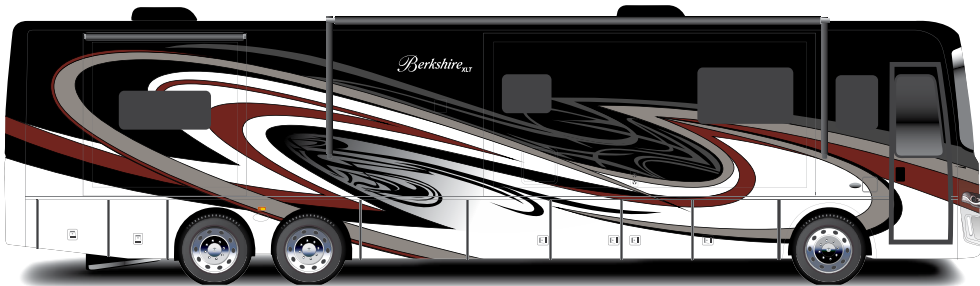
PAINT PACKAGES



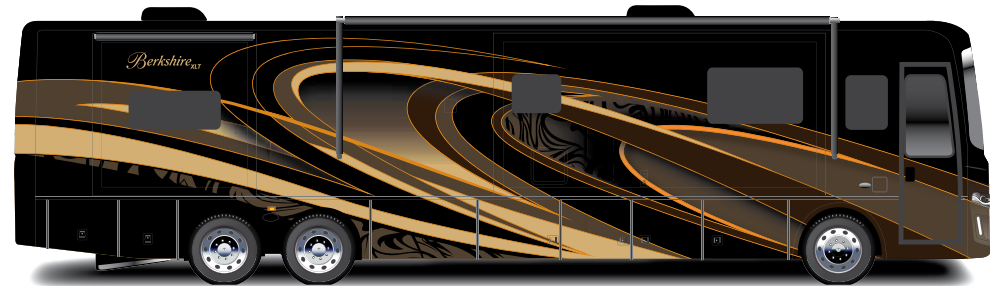
MODERN ANTIQUE



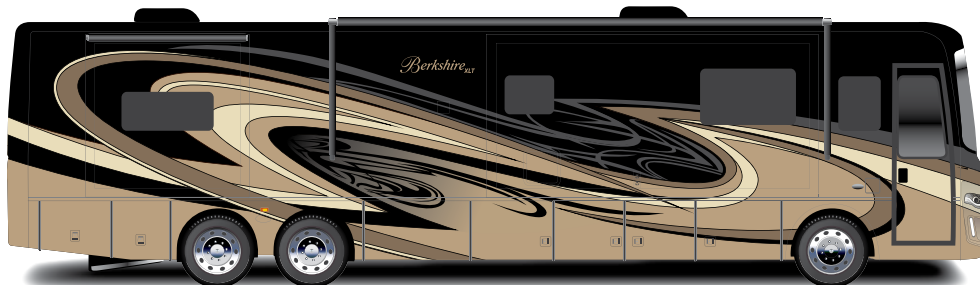
REDSTONE UPGRADE OPTION



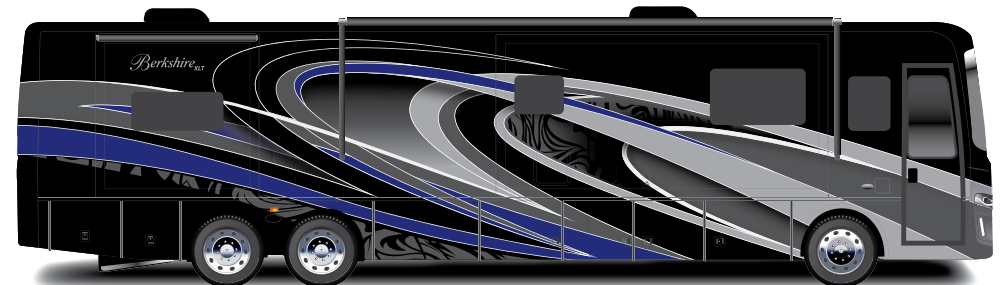
FINE WINE



LABYRINTH UPGRADE OPTION



FRAPPUCCINO



DARK SAPPHIRE UPGRADE OPTION

Automotive & Cockpit Standards

- Freightliner XCR Raised Rail Chassis
- Cummins ISL9 450HP @ 2100 RPM, 2200 GOV RPM, 1250 LB/FT @ 1400RPM
- Side radiator cooling package
- Allison 3000 MH 6-speed transmission
- 120V Engine Heater 1000W
- 22.5" Polished Aluminum Wheels
- Michelin XZA3+ 275/80 R22.5 16 ply radial tires
- Trailer hitch capacity, 15,000 Lbs.
- Allison electronic push button shifter
- 13 Gallon DEF Tank
- LCD engine message center
- Day time running lights
- 7-Pin tow power connector
- 18.7 CFM air compressor
- Farr Eco-air cleaner
- Air filter restriction indicator
- Fuel/water separator
- Brake line air dryer with heater
- Automatic, heated moisture ejectors
- Power steering
- Washer/wiper with intermittent function
- 160 amp alternator
- Two (2) 1900 CCA at 0 degree Fahrenheit, maintenance free batteries
- Full air ABS brakes with auto slack adjuster
- Telescopic/tilt steering wheel
- Neway air suspension front, V-ride rear suspension
- Sachs custom tuned shock absorbers
- 55 degree wheel cut
- Auto air suspension deflation system
- Transmission oil cooler
- 5 year / 100,000 mile coolant (some maintenance required)
- 4-Spoke VIP steering wheel
- Electronic cruise control with high idle
- Multiple auxiliary charging ports at dash
- Power stepwell cover
- Entry assist handle

Construction & Exterior Standards

- Full body painted exterior (Sikkens 4X clear coat)
- Four (4) point fully auto hydraulic leveling system w/ auto air dump
- Tru-Brace chassis support system
- Rust resistant aluminized steel chassis skirts
- Diamond shield front mask protective film
- 1 Piece fiberglass roof
- Fiberglass front and rear caps
- Top-mount exterior, heated, mirrors with cameras
- Frameless dual pane, dark tint windows
- Automotive foam and Ziebart seal undercoating
- Carefree power door awning
- Carefree Travl'r electric patio awning with LED lighting
- Carefree slideout toppers
- Full height strut assisted compartment doors with full pass through storage
- "One Key" system, exterior compartment, entry door & fuel fill doors
- Quiet integrated A/C intake/ducting roof system
- Crowned and layered vacuum bonded fiberglass roof
- Vacuum bonded 3" floor with tubular aluminum frame
- Gel coated vacuum bonded aluminum tube with fiberglass and block foam insulation in sidewalls
- 1/2" structure wood flooring
- Block foam polystyrene insulation
- 30" Entryway
- Channeled drains for A/C's
- Steel basement construction
- Tubular steel firewall with polystyrene insulation
- Shower skylight
- Lighted exterior assist handle
- Two piece rear ladder
- 84" interior ceiling height
- PTL Entrance door with deadbolt
- Auxiliary air chuck (front firewall)
- Auxiliary LP supply, quick connect (passenger side)
- Full length mud flap with chrome Forest River name
- Slide tray in basement compartment

Electrical Standards

- 50A service with auto transfer switch & 36' power cord
- 8kW Onan diesel generator with manual slide tray
- 120v Energy management system
- Electronic battery disconnect switch
- Remote generator start switch (on dash)
- LED Ceiling light package
- Driver & Passenger LED ceiling map lights
- Cosmetic bathroom lighting
- Decorative wall and dinette lighting where applicable
- Auxiliary engine start switch at dash
- Individual reading lights bed overhead
- 2000w pure sine inverter/converter
- Euro style 12v Switches
- Auto generator start module
- Four (4) Six volt deep cycle house batteries
- Two (2) Master electric convenience shut off switches
- Auto/power entrance step
- Patio light
- Easy access fuse/load centers
- Dimmer control living room & bedroom ceiling lights

Plumbing Standards

- Variable speed constant pressure water pump
- Bath - Solid surface under mount sink
- Kitchen - Stainless steel under mount sink
- Whole house water filter
- Black water tank flush system
- Kitchen- High rise single lever faucet with pull-out sprayer
- Double lever lavatory faucets
- One piece fiberglass shower with glass door
- Porcelain china stool
- Clean easy exterior shower hose
- Individual zoned hot/cold manifold water supply system

*Berkshire*_{XL}T

Driver/Passenger Area Standards

- One piece windshield
- Power front night and day shade
- Manual passenger and driver windows day/night shade
- Black pearl burl dash panels
- Fog lights
- Dash radio with integrated color back-up and side camera package with navigation
- Wrap around cockpit with nine (9) gauge instrument cluster
- Driver 360 degree swivel and recline seat with 6-Way power adjustment
- Passenger 360 degree swivel & recline seat with power footrest
- Soft touch Flexsteel driver/passenger seat
- Passenger side console with cupholder
- Lighted step well
- Two (2) Defroster fans with high and low settings
- Driver/passenger cup holders
- Automotive dash AC/Heater with deluxe controls
- Premium Freightliner gauge package with chrome bezels

Entertainment Standards

- 49" LED TV, living room
- 32" LED TV, bedroom
- 32" LED TV, front dash overhead
- Hi-Fi sound bar with Bluetooth
- Roof mount Winegard Trav'ler satellite prep
- Cable TV prep
- Hi-Definition digital TV antenna with signal strength indicator
- High Definition Cat 6 matrix signal distribution
- Sirius/XM satellite radio capable
- Blu-ray DVD Player
- Exterior entertainment center in sidewall: 40" TV and radio with auxiliary jack

Interior Standards

- Polished porcelain tile
- Native Hardwood cabinetry

- Raised panel hardwood cabinet doors
- Hidden hinges and pull style cabinet hardware
- Carpeted living room and dining slideouts
- Window valances
- Bedroom carpet with padding
- Polished solid surface kitchen and bathroom countertops and backsplash with tile inserts
- Laminate on all other countertops
- Soft close ball bearing drawer guides in kitchen and bathroom
- Full extension ball bearing metal drawer guides
- Galley storage compartment for sink covers
- Kitchen Pantry
- "Soft Touch" padded ceiling
- Roller style day/night shades
- Large bedside wardrobe
- Dresser drawers and wardrobe type cabinets
- 72"x 80" Serta king bed with bedspread and decorative pillows
- Hardwood headboard w/padded insert
- Contoured overhead cabinets in slide rooms
- Bedroom night stands
- Mirrored medicine cabinets
- Towel bar, toilet Paper holder and towel ring
- "Villa" sofa/dinette ensemble

Appliance Standards

- 15,000 BTU with heat pump (front), 15,000 BTU (rear), 13,500 BTU (middle),
- low profile A/C's dual zone with remote sensors
- Holding tank heat pads
- Continuous flow tankless gas hot water heater
- 30,000 BTU Front furnace
- 20,000 BTU Rear furnace
- 30" OTR convection microwave oven
- Residential 23 cu. ft. French door refrigerator with ice maker
- Electric induction cook top
- Power fan in bathroom
- Fan in galley with built in thermostat control
- Washer/dryer prep
- Electric fireplace

Safety Standards

- 110 GFI protected circuits
- Carbon monoxide detector
- LP gas detector with auto tank shutoff
- Smoke alarm
- Egress window
- Surface mounted fire extinguisher

Chassis Upgrade Package

- UltraSteer tag axle
- Jacobs compression brake
- Adjustable suspended pedals
- 150 gallon, locking dual fill fuel tank

Interior Options

- Free standing dinette with 4 chairs with expandable sofa (43A)

Appliance/Electronic Options

- 10kW Onan Generator with slide
- Electric heated tile flooring with 10kW Onan generator
- Trav'ler (Winegard) satellite antenna Direct TV (US)- Shaw (Canada)
- Stackable washer/dryer



The Berkshire XLT series utilizes the Freightliner XCR Raised Rail Chassis, a Cummins ISL9 450HP @ 2100 RPM, 2200 GOV RPM, 1250 LB/FT @ 1400RPM, a side radiator and an Allison 3000MH 6-speed transmission.

24/7 EMERGENCY ROADSIDE ASSISTANCE

For a worry-free ownership experience Forest River includes one

year of Coach-Net RV Technical & Roadside Assistance with each RV purchase. Whether new to the RV lifestyle or an experienced RV enthusiast, Forest River owners have 24/7 access to technical, operational and emergency road service coverage throughout the US & Canada. Coach-Net's fast, dependable service is just a phone call away.

Coach-Net®

RV Technical & Roadside Assistance



PRE-DELIVERY INSPECTION FACILITY

20,000 square feet of quality assurance. The bare essentials for a premium product. This state-of-the-art facility gives immediate daily feedback to production for quality assurance in every unit built.



Forest River, Inc. encourages our customers to purchase their Forest River products from a local dealership whenever possible for the following reasons:

- 1) Forest River, Inc. dealers are independently owned and operated businesses so priority service and scheduling is at their discretion and is often provided to customers that purchased their unit at that dealership.
- 2) Purchasing locally allows customers to establish meaningful relationships with a dealer, enhancing the RV experience through assistance with product questions, user tips or RV regulations for your state or country, and much more!
- 3) Canadian customers must meet requirements to bring an RV purchased out of the country to their home. These requirements may involve additional inspections and certifications, taxes and fees. Your local Canadian Dealer is a professional at meeting these requirements.
- 4) Scheduling timely warranty repairs and adjustments through a local dealership provides far greater flexibility and convenience to you, the customer!

It is the goal of Forest River, Inc. that all of our RV owners fully enjoy the RV experience and that customer satisfaction meets or exceeds their expectations!

GVWR (Gross Vehicle Weight Rating) - is the maximum permissible weight of the unit when fully loaded. It includes all weights, inclusive of all fluids, occupants, cargo, optional equipment and accessories. For safety and product performance do NOT exceed the GVWR.

GCWR (Gross Combined Weight Rating) - Is the maximum permissible loaded weight of your motor home and any towed trailer or towed vehicle. Actual GCWR of this vehicle may be limited by the sum of the GVWR and the installed hitch receiver maximum capacity rating; see hitch rating label for detail.

GAWR (Gross Axle Weight Rating) - is the maximum permissible weight, including cargo, fluids, optional equipment and accessories that can be safely supported by each axle.

UVW (Unloaded Vehicle Weight)* - is the typical weight of the unit as manufactured at the factory. It includes all weight at the unit's axle(s), including full fuel, all fluids and LP Gas. The UVW does not include cargo, fresh potable water, additional optional equipment or dealer installed accessories.

*Estimated Average based on standard build optional equipment.

CCC (Cargo Carrying Capacity)** - is the amount of weight available for fresh potable water, cargo, passengers, additional optional equipment and accessories. CCC is equal to GVWR minus UVW. Available CCC should accommodate fresh potable water (8.3 lbs per gallon). Before filling the fresh water tank, empty the black and gray tanks to provide for more cargo capacity.

** Estimated average based on standard build optional equipment

Each Forest River RV is weighed at the manufacturing facility prior to shipping. A label identifying the unloaded vehicle weight of the actual unit and the cargo carrying capacity is applied to every Forest River RV prior to leaving our facilities.

The load capacity of your unit is designated by weight, not by volume, so you cannot necessarily use all available space when loading your unit.

Actual towing capacity is dependent upon your particular loading and towing circumstances, which includes the GVWR, GAWR and GCWR as well as adequate trailer brakes. Please refer to the Operator's Manual of your vehicle for further towing information.

©Berkshire - a division of Forest River Inc.
A Berkshire Hathaway company



Learn More
Scan this barcode using a QR Reader on your smart phone to learn more about Forest River.



A Berkshire Hathaway company.

Forest River Diesel Division
1800 W. Hively Ave.
Elkhart, IN 46517
(574) 522-3693
www.forestriverinc.com
www.forestriveraccessories.com

FREE MEMBERSHIP
to Forest River Owners' Group

www.forestriverfrog.com



All information contained in this brochure is believed to be accurate at the time of publication. However, during the model year, it may be necessary to make revisions and Forest River, Inc., reserves the right to make all such changes without notice, including prices, colors, materials, equipment and specifications as well as the addition of new models and the discontinuance of models shown in this brochure. Therefore, please consult with your Forest River, Inc., dealer and confirm the existence of any materials, design or specifications that are material to your purchase decision.