

# RIVERSIDE RV

Visit us at [www.riversidervs.net](http://www.riversidervs.net)  
1775 E US 20, LaGrange, IN 46761

*Your lite-weight travel trailer headquarters.*

Website: [www.riversidervs.net](http://www.riversidervs.net) • Email: [info@riversidervs.net](mailto:info@riversidervs.net) • Sales: [sales@riversidervs.net](mailto:sales@riversidervs.net)  
• Parts: [parts@riversidervs.net](mailto:parts@riversidervs.net) • Warranty: [warranty@riversidervs.net](mailto:warranty@riversidervs.net)



Amish craftsmanship in every unit.



Polar White Aqua Retro



Pewter Red Retro



Hybrid Polar White

Models are available in any of our decors:  
Polar White Aqua Retro/ Pewter Red Retro/  
Colonial White Retro/ Polar White/ Orange/  
Indigo Blue/ White, Grey, Tan Fiberglass.  
Model 150 is available with hybrid-option

## Travel Trailer Features

- 16,000 BTU Furnace
- Gas/Electric Refrigerator
- Electric Refer 150
- LP Bottle(s)
- Entry Steps
- Outside Service Lights
- Water Heater 155,155XL,175,177,181
- Powder Coated Chassis
- Aluminum Framed 155, 155XL, 175, 177, 509
- Wood Framed 150
- TPO / Rubber Roof
- One Piece Floor Decking (5/8")
- Hardwood Cabinet Doors
- Spacious Cabinetry
- Radius Windows & Doors
- 30 Amp Power Cord
- Rear Jacks

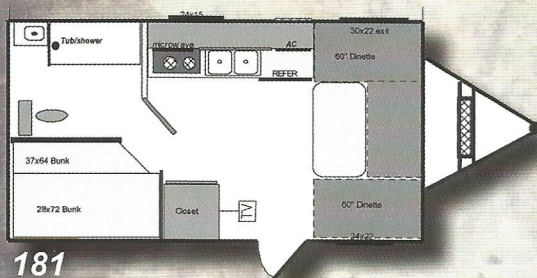
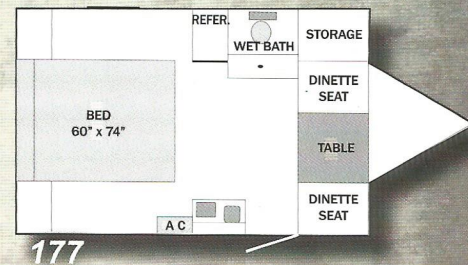
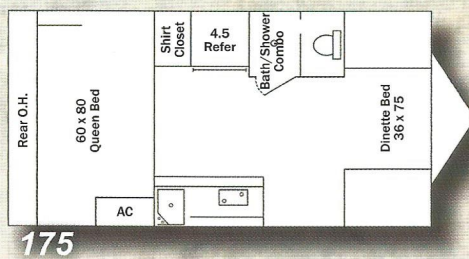
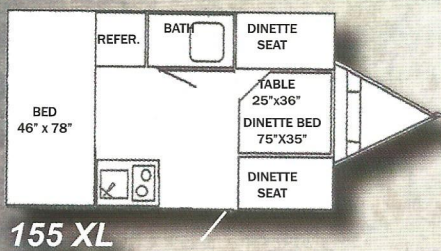
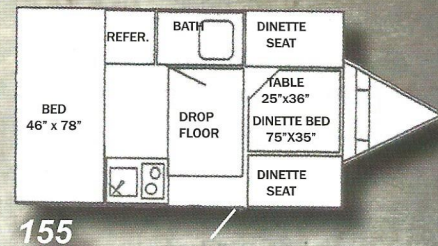
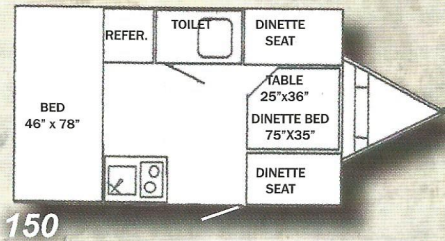
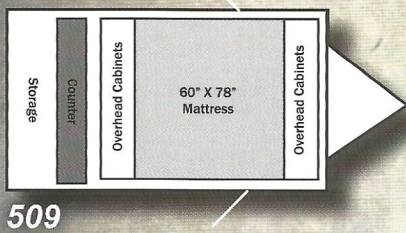
## POPULAR OPTIONS

- Air Conditioner
- Microwave
- Stereo w/CD Player
- Awning
- Front Jacks
- Spare Tire
- TV Antenna & Cable
- Fiberglass Exterior
- Outside Shower
- 12 V Fantastic Fan

Dealer:

**Thank you** for your interest in Riverside RV. We offer a complete line of lite-weight, lite-priced travel trailers, and toy haulers. You are invited to visit our website for additional information. Or call 574-596-4828.

# RETRO FLOORPLANS

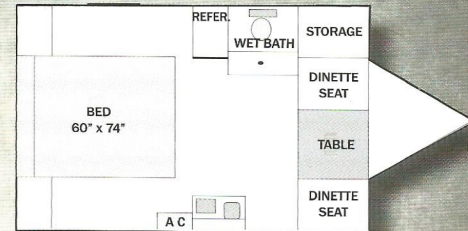
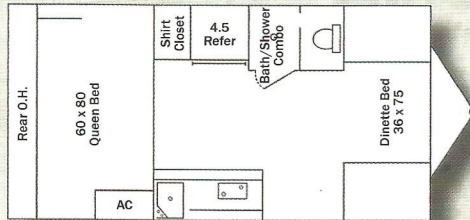
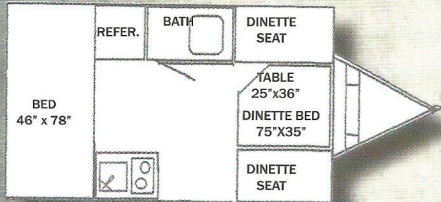
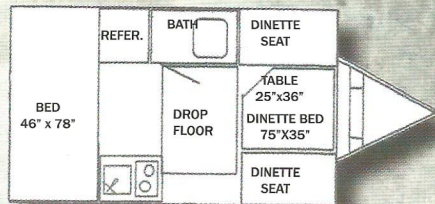
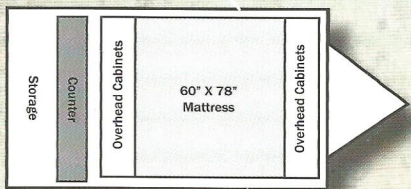


## - SPECIFICATIONS -

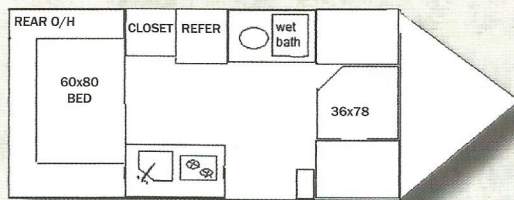
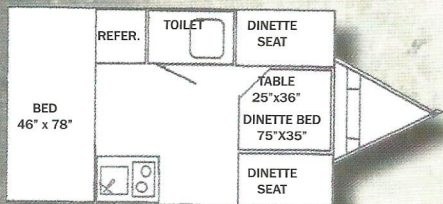
### Single Axel Travel Trailers

Model	150	155	155 XL	175	177	181	509
Overall Length	14'9"	14'9"	14'9"	18'6"	18'6"	19'6"	13'2"
Hitch Dry Weight (lbs.)	280	300	220	380	380	400	120
Total Dry Weight (lbs.)	1764	1840	1937	2510	2530	2725	920
Carrying Capacity (lbs.)	1736	1660	1530	990	970	775	530
Exterior Width	6'10"	6'10"	6'10"	7'6"	8'	8'	5'
Fresh Water (gal.)	11	11	11	20	20	20	-
Grey Water (gal.)	-	-	-	32	32	32	-
Black Water (gal.)	5	5	5	10	10	17	-
Tire Size	13"	13"	13"	14"	14"	14"	13"

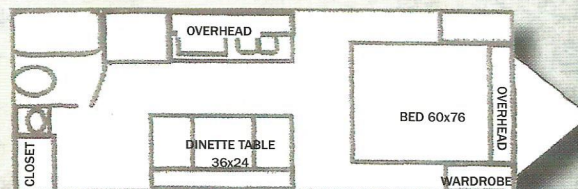
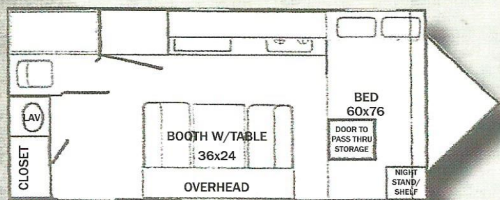
## ALUMINUM CAGE CONSTRUCTION



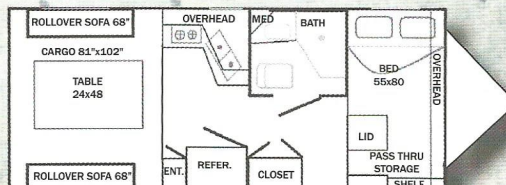
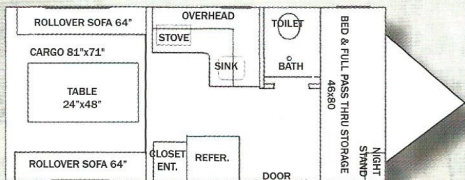
## WOOD FRAME CONSTRUCTION



## VACUUM BONDED SIDEWALLS CONSTRUCTION



## TOY HAULERS



## - SPECIFICATIONS -

Single Axle Travel Trailers

Model	150	155	155 XL	171	173	175	177	509
Overall Length	14'9"	14'9"	14'9"	18'6"	18'6"	18'6"	18'6"	13'2"
Hitch Dry Weight (lbs.)	280	300	220	480	260	380	380	120
Total Dry Weight (lbs.)	1764	1840	1937	2485	2585	2510	2530	920
Carrying Capacity (lbs.)	1736	1660	1530	1015	915	990	970	530
Exterior Width	6'10"	6'10"	6'10"	7'6"	8'	7'6"	8'	5'
Fresh Water (gal.)	11	11	11	20	20	20	20	-
Grey Water (gal.)	-	-	-	32	32	32	32	-
Black Water (gal.)	5	5	5	5	10	10	10	-
Tire Size	13"	13"	13"	14"	14"	14"	14"	13"

Axles: Travel Trailers and Toy Haulers

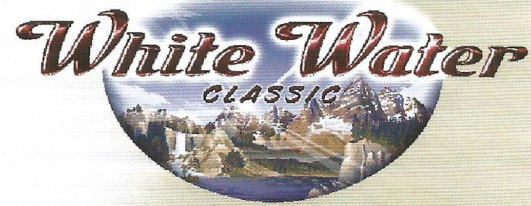
Model	180	189	819	826
Overall Length	20'	23'	19'6"	26'9"
Hitch Dry Weight (lbs.)	340	360	500	650
Total Dry Weight (lbs.)	2920	3300	3520	4030
Carrying Capacity (lbs.)	4420	4060	3900	3620
Exterior Width	7'6"	8'	8'	8'
Fresh Water (gal.)	20	39	39	39
Grey Water (gal.)	32	32	32	32
Black Water (gal.)	17	17	10	17
Tire Size	14"	14"	15"	15"

# RIVERSIDE RV

Visit us at [www.riversidervs.net](http://www.riversidervs.net)  
1775 E US 20, LaGrange, IN 46761

Your lite-weight travel trailer headquarters.

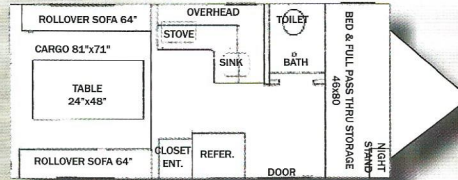
Website: [www.riversidervs.net](http://www.riversidervs.net) • Email: [info@riversidervs.net](mailto:info@riversidervs.net) • Sales: [sales@riversidervs.net](mailto:sales@riversidervs.net)  
• Parts: [parts@riversidervs.net](mailto:parts@riversidervs.net) • Warranty: [warranty@riversidervs.net](mailto:warranty@riversidervs.net)



## TOY HAULERS



**ONLY 19'6" LONG AND A DRY WT. OF 3520 LBS.**

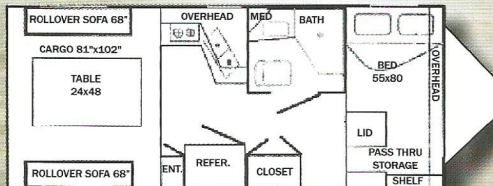


819

**SPECIFICATIONS:**  
OVERALL LENGTH: 19'6"  
DRY HTCH WT.: 500 LBS.  
DRY WT.: 3520 LBS.  
CARRYING CAPACITY: 3480 LBS.  
EXTERIOR WIDTH: 8'  
FRESH WATER: 39 GAL.  
GREY WATER: 32 GAL.  
BLACK WATER: 10 GAL.  
TIRE SIZE: 15"



**LOTS OF SPACE FOR STORAGE AND LIVING**

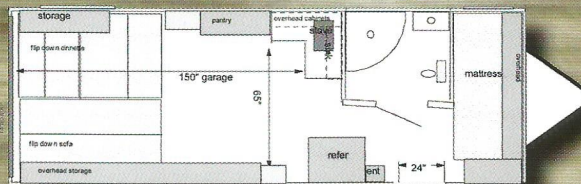


826

**SPECIFICATIONS:**  
OVERALL LENGTH: 26'9"  
DRY HTCH WT.: 650 LBS.  
DRY WT.: 4030 LBS.  
CARRYING CAPACITY: 2970 LBS.  
EXTERIOR WIDTH: 8'  
FRESH WATER: 39 GAL.  
GREY WATER: 32 GAL.  
BLACK WATER: 17 GAL.  
TIRE SIZE: 15"



**FEATURING A TALLER RAMP DOOR FOR THE LARGER "TOY"**



827

**SPECIFICATIONS:**  
OVERALL LENGTH: 27'4"  
DRY HTCH WT.: 420 LBS.  
DRY WT.: 4220 LBS.  
CARRYING CAPACITY: 2780 LBS.  
EXTERIOR WIDTH: 8'  
FRESH WATER: 39 GAL.  
GREY WATER: 32 GAL.  
BLACK WATER: 17 GAL.  
TIRE SIZE: 15"

### Standard Features

- 20,000 BTU Furnace
- Gas/Electric Refrigerator
- Pass Through Storage
- LP Bottle(s)
- Double Entry Steps
- Outside Service Lights
- Powder Coated Chassis
- Aluminum Framed
- Laminated Fiberglass Exterior
- TPO/Rubber Roof
- One Piece Floor Decking (5/8")
- Hardwood Cabinet Doors
- Spacious Cabinetry
- Radius Windows & Doors
- 30 Amp Power Cord

### POPULAR OPTIONS

- AM/FM/CD Stereo
- Awning, Spare Tire
- TV Antenna, LP Tank
- Cover, Hitch Light
- Pleated Shades
- Leveling Jacks
- Microwave
- Alum. Rims

Dealer:

**Thank you** for your interest in Riverside RV. We offer a complete line of lite-weight, lite-priced travel trailers, and toy haulers. You are invited to visit our website for additional information. Or call 574-596-4828.