

STARCRAFT®
THE FUTURE OF CAMPING | pure and simple.

LAUNCH & ULTRA LITE SERIES TRAVEL TRAILERS

LAUNCH

CELEBRATE THE LIGHTEST OF LIGHTWEIGHTS AND FALL IN LOVE ALL OVER AGAIN!





Model 28BHS shown.



HappiJac bunks with side storage door.



Model 26RLS shown.



STANDARDS.

An electric power awning is standard on Launch models and integrated LED lighting comes with the Ultra Lite series. You'll find many standard features that are options on other brands.



THE ULTIMATE IN COMFORT.

Our Pillow Top Denver Mattress™ comes standard and features cradled pressure points that make it feel like you're sleeping in zero gravity!

UFO

UNBELIEVABLE FEATURES & OPTIONS.

STARMAXX™ PASS-THRU SYSTEM.

All Launch Ultra Lites come with a well-thought-out front storage compartment we call StarMAXX. It's an integrated pass-through area featuring many exclusive and convenient items!



TOY-LOC

Part of the StarMAXX storage package, this built-in lock is a smart idea.



33% MORE STORAGE.

Features TPO rubber floor material, tie-downs and a battery disconnect.



BACKUP CAMERA.

The prep and wiring is standard on our Ultra Lite series. And this wireless backup camera is a great option.



OUTSIDE SHOWER.

Another awesome standard on the Ultra Lite series is this outside shower with hot and cold water and a flexible wand and shower head.



ALUMINUM WHEELS.

Dress up your Launch travel trailer with these modern aluminum wheels. They are an affordable option to add value and styling to your trailer.

SPACE AGE CONSTRUCTION FEATURES.

For over 50 years Starcraft RV's reputation has been built around top-quality products. Each is designed to provide years of trouble-free use. Backed by a 2-year limited warranty, our innovation and quality start with a solid foundation. Compare and you'll see just how much care and meticulous attention to "doing it right" goes into every Starcraft.



SEE THE FULL COMPARISON ONLINE AT
STARCRAFTCAMPING.COM



US 4,500 lbs. on a Starcraft roof!



THEM Same weight on a competitor's style roof.



US Vertical wood studs for added support.



THEM Little aluminum brace, if that.

STRONGEST ROOF EVER!

Strength is one of the basic principles of engineering; the stronger something is built, the longer it will last. At Starcraft, we understand strength comes from within, which is why we focused on the smallest of details when constructing our exclusive Magnum Roof System. From sturdier vertical studs to 7" header beams, we pride ourselves on staying at the top of our game—building stronger products that last.



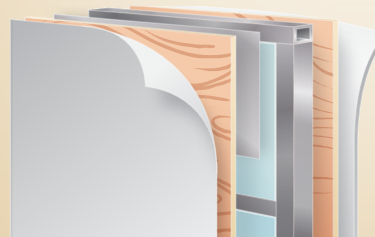
US We use large oversized nail plates on both sides.



THEM They use smaller and only on one side of truss.

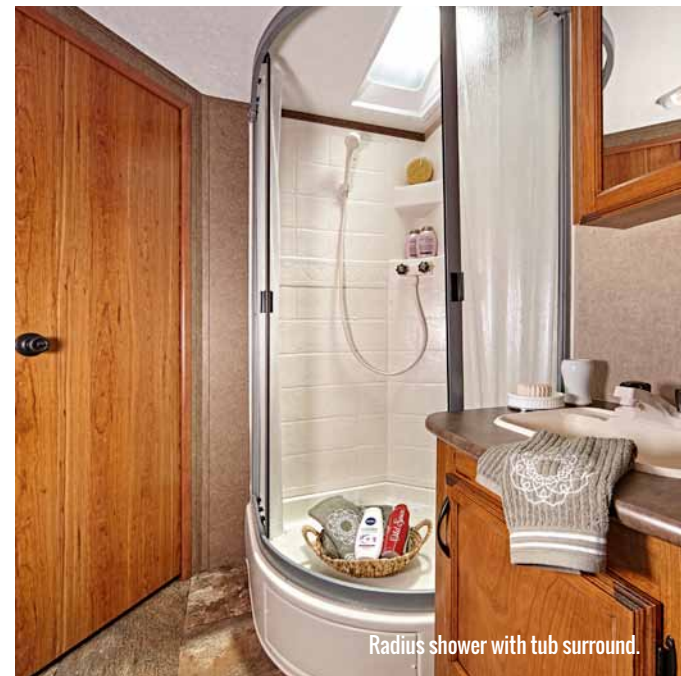


Our optional Climate Package extends your camping season and provides protection against frigid temperatures with its insulated, heated and enclosed underbelly.



Using TuffShell vacuum-bonded lamination, our walls combine welded aluminum framing, fiberglass sidewalls and metal backers, ensuring your camper can handle the toughest conditions.

LAUNCH ULTRA LITE



COMFORT.

With this optional sleeper sofa you'll find that it converts easily into a bed. Quality upholstery and cushions are designed for comfort and durability.



ENTERTAINMENT.

This 28" LED TV is optional. A 12-volt brand name stereo with CD/DVD and USB input are standard equipment on the Launch series.

STANDARDS & OPTIONS

POPULAR STANDARDS

- 5/8" main floor decking
- Crowned truss roof rafters on 16" centers with 3/8" WALK ON decking
- TUFFSHELL CONSTRUCTION Featuring:
 - Vacuum-bonded laminated aluminum-framed sidewalls (R-9)
 - Vacuum-bonded laminated aluminum-framed endwalls (R-9)
 - Vacuum-bonded laminated aluminum-framed slideout walls and roof (R-9)
- Magnum Roof System is 50% stronger!
- Digital antenna (TV/FM)
- Solar prep
- StarMAXX pass-thru storage system: TPO composite flooring, dual tie-down tracks, battery disconnect switch and Toy Loc
- Wireless back-up camera system prep
- LED lighting package
- 6.5" interior speakers
- 78" interior ceiling height
- Ball-bearing drawer guides, 50-lb. capacity with full-drawer extension
- Honey glazed cherry wood cabinetry

- Jackknife sofa
- Kitchen backsplash
- Ultra Plush Denver Mattress™ bunk mats
- Pleated shades

CUSTOMER CONVENIENCE PACKAGE (MANDATORY)

- 13,500-BTU or 15,000-BTU A/C with wall thermostat and louvered directional ceiling vents
- 6-gallon gas DSI water heater
- 12V stereo with CD/DVD and USB input
- Front diamond plate
- Microwave
- Outside shower
- Outside speakers (2)
- Tub surround
- Water heater bypass

SHOW STOPPER PACKAGE (MANDATORY)

- 8 cu.ft. gas/electric refrigerator
- 30-lb. propane bottles with cover (2)
- Pillow Top Denver Mattress™
- Electric awning w/LED lighting

- Electric tongue jack
- LED accent lighting under kitchen countertops
- Range cover
- Sink covers
- Stabilizer jacks (4)

POPULAR OPTIONS

- 28" LED TV
- 80-watt portable solar kit
- Aluminum rims
- Climate Package: Insulated, heated and enclosed underbelly; foil insulation in roof
- Frameless windows
- Oven
- Sleeper sofa (N/A 26BHS)
- Spare tire with carrier and cover
- Tri-fold hide-a-bed sofa (21FBS, 26RLS)
- TPMS - tire pressure monitoring system
- Wireless back-up camera system
- Free standing table w/hidden leaf and 4 chairs (24RLS, 26RLS)
- Theater seating ILO jack knife sofa (24RLS)

FOR FULL OPTIONS AND STANDARD FEATURES GO TO starcraftcamping.com

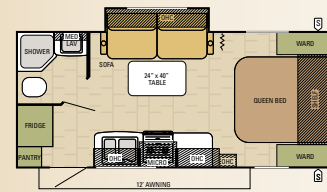
LAUNCH ULTRA LITE SPECIFICATIONS

SPECIFICATIONS	21FBS	22BUD	24RLS	26BHS	26RLS	28BHS
Unloaded Vehicle Weight (lbs)	3710	3875	4880	4820	5560	5335
Dry Hitch Weight (lbs)	305	465	540	520	725	575
Gross Vehicle Weight Rating (lbs)	4900	5250	6250	6250	7250	7250
Cargo Carrying Capacity (lbs)	1190	1375	1370	1430	1690	1915
Exterior Length	23' 6"	25' 5"	29' 5"	30' 8"	30' 11"	31' 4"
Exterior Width	96"	96"	96"	96"	96"	96"
Exterior Height with A/C	121 - 3/4"	123"	127 - 3/4"	123 - 1/4"	129 - 1/4"	128 - 1/4"
Interior Height (bedroom)	78"	78"	78"	78"	77"	78"
Wheel Base	187"	195 - 5/8"	233 - 1/8"	238 - 1/2"	247"	247"
Fresh Water Capacity (gals)	22 - 1/2	22 - 1/2	42	42	42	42
Gray Wastewater Capacity (gals)	31	31	31	31	31	22 - 1/2
Black Wastewater Capacity (gals)	31	31	31	31	31	22 - 1/2
Sleeping Capacity	3-4	4	4-6	8-10	4-6	8-10

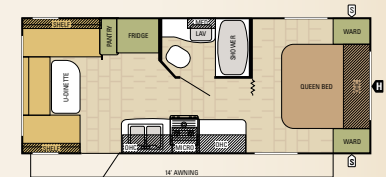
The weights of certain options and/or option packages are not included in the UVW listed above. See weight information details on the back of this brochure.

LAUNCH ULTRA LITE (8' WIDE)

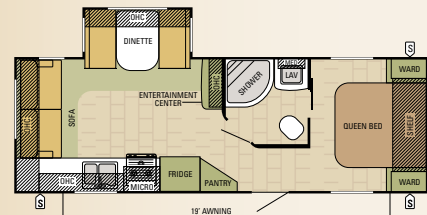
Lightweight travel trailers are our specialty at Starcraft! They're large enough to load up with great standard features along with options to make any camping experience the most enjoyable. Yet lightweight enough to tow efficiently, and not break the bank as well. Upgraded features at a base price include Honey-glazed cherry wood cabinetry, quality ball-bearing drawer guides with 50 lb. capacity, outside stereo speakers, Starmaxx pass-through storage, Denver brand pillow-top mattress, electric awning, name-brand appliances, and more—all standard features! Find your perfect floorplan here. Sleeping capacities up to 10 in select models.



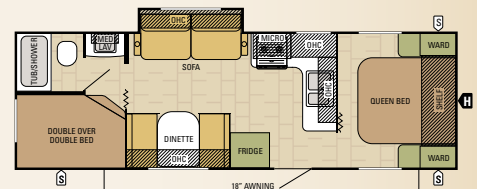
21FBS | LAUNCH ULTRA LITE



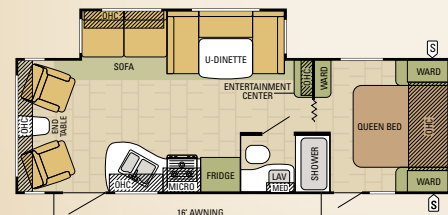
22BUD | LAUNCH ULTRA LITE



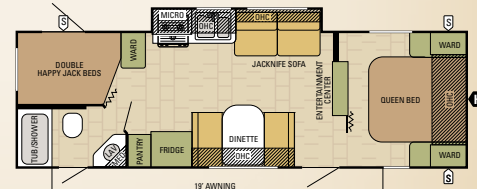
24RLS | LAUNCH ULTRA LITE



26BHS | LAUNCH ULTRA LITE



26RLS | LAUNCH ULTRA LITE



28BHS | LAUNCH ULTRA LITE

LAUNCH 7' WIDE LIGHTWEIGHT TRAILERS



Model 16RB shown.



Model 16RB shown.



Standard bathroom shown.



Model 16RB shown.



AQUASHIELD AQUALON.

With a 7-year tent warranty, our mold-resistant, double-stitched AquaShield Aqualon material doesn't stretch, shrink or crack, providing long-lasting durability even when it's up against severe elements.

STANDARDS & OPTIONS

POPULAR STANDARDS

- 5/8" main floor decking
- Cable-support bunk-end system (1,100-lb. capacity) (16RB, 17SB)
- Crowned truss roof rafters on 16" centers with 3/8" WALK ON decking
- TUFFSHELL CONSTRUCTION Featuring:
 - Vacuum-bonded laminated aluminum-framed sidewalls (R-9)
 - Vacuum-bonded laminated aluminum-framed endwalls (R-9)
 - Vacuum-bonded laminated aluminum-framed slideout walls and roof (R-9)
- Magnum Roof System is 50% stronger than others
- AquaShield Aqualon water-repellent, sectionalized tent with 7-year warranty (16RB, 17SB)
- Bunk-end tent permanently attached to bed base (16RB, 17SB)
- Solar prep

- Digital antenna (TV/FM)
- 6.5" interior speakers
- 78" interior ceiling height
- 8,000-BTU side-mounted A/C
- Honey glazed cherry wood cabinetry
- LED lighting package
- Pleated shades

SHOW STOPPER PACKAGE (MANDATORY)

- Electric awning
- Stabilizer jacks (4)
- Spare tire cover
- Heated bunk mat(s) on 16RB, 17SB
- Ultra Plush Denver Mattress™ bunk mat(s) on 16RB and 17SB

CUSTOMER CONVENIENCE PACKAGE (MANDATORY)

- 4 cu.ft. gas/electric refrigerator
- 6-gallon gas DSI water heater

- 12V stereo with CD/DVD and USB input
- Microwave
- Spare tire with carrier
- Range hood
- Water heater bypass

POPULAR OPTIONS

- 80-watt portable solar kit
- 13,500-BTU A/C in lieu of 8,000-BTU A/C
- Aluminum rim(s)
- Bumper mount grill
- Extreme Package: 5" extra ground clearance, 15" off-road mud tires, enclosed underbelly, Flex Foil insulation in floor and roof, front black diamond plate, double-entrance step and Extreme logo
- Frameless windows

FOR FULL OPTIONS AND STANDARD FEATURES GO TO starcraftcamping.com

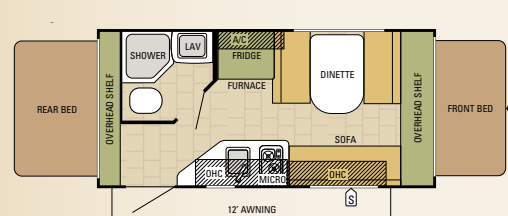
LAUNCH 7' SPECIFICATIONS

SPECIFICATIONS	16RB	17FB	17SB	18BH	19BHS
Unloaded Vehicle Weight (lbs)	2575	2725	2770	2665	3575
Dry Hitch Weight (lbs)	335	380	330	410	455
Gross Vehicle Weight Rating (lbs)	3500	3750	3500	3500	4750
Cargo Carrying Capacity (lbs)	925	1025	730	835	1175
Exterior Length	18' 4"	20' 6"	20' 3"	20' 6"	22'
Exterior Width	85"	85"	85"	85"	85"
Exterior Height with A/C	117"	117"	117"	117"	119 - 3/4"
Interior Height (bedroom)	78"	78"	78"	78"	73"
Wheel Base	150"	166 - 5/8"	159 - 7/8"	166 - 5/8"	180 - 3/4"
Fresh Water Capacity (gals)	20	20	20	20	26
Gray Wastewater Capacity (gals)	15	15	15	15	31
Black Wastewater Capacity (gals)	9	9	9	9	31
Sleeping Capacity	6-7	3-4	5-6	3-4	6-7

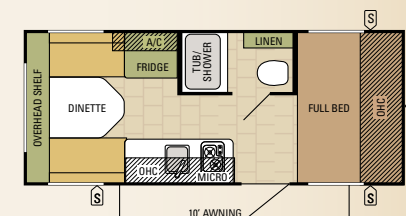
The weights of certain options and/or option packages are not included in the UVW listed above. See weight information details on the back of this brochure.

LAUNCH (7' WIDE)

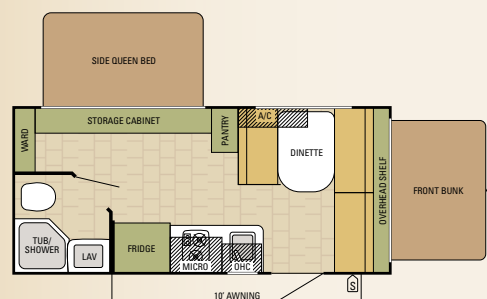
Our entry-level priced, but not under equipped, Launch series models are loaded with great camping value and quality, in an affordable package. This is RVing simplified. They can be towed with a small- to mid-sized SUV or minivan for your ease and convenience. You'll find floorplans featuring expandable tent rooms for maximum space yet compact towing. All of our 7' wides are under 4,000 lbs.! Best of all, each model offers all of the comforts of home. Each is backed by Starcraft's quality reputation, an industry-leading 2-year warranty, and a nationwide dealer network.



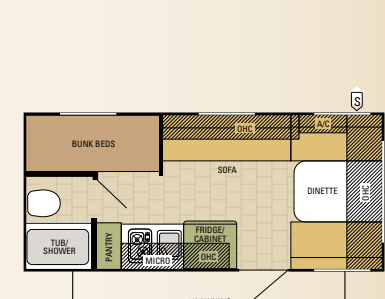
16RB | LAUNCH



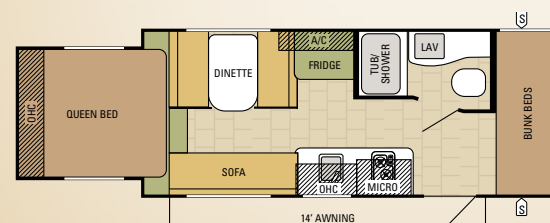
17FB | LAUNCH



17SB | LAUNCH



18BH | LAUNCH



19BHS | LAUNCH



LAUNCH. THE FUTURE OF CAMPING JUST GOT BRIGHTER!



LANDED IN 1964. Starcraft is one of the oldest and most respected names in the RV industry. In fact, we've been around since 1903. Back then, we made our name building livestock tanks and other metal farm equipment. In the 1920's, we added a variety of boats to our product lineup. And in 1964, we entered—and revolutionized—the modern camping industry.



UNHEARD OF 2-YEAR WARRANTY.

The Starcraft warranty is a manufacturer's limited warranty. Each Starcraft is warranted to the original purchaser for 24 months from the original date of purchase against defects in materials and workmanship. For a copy of the limited warranty with full terms and conditions, ask your local Starcraft RV dealer.

eco advantage™

SAVING THE PLANET. The Starcraft EcoAdvantage™ is our company's commitment to protecting the environment. Through smart sustainability efforts, we're creating better ways to build better RVs using fewer or renewable natural resources. This is our commitment to you—to build a better RV so that we can do a better job of protecting our planet.

GET MORE OF WHAT YOU NEED IN CYBERSPACE.

Explore more Starcraft RVs by visiting our world-class website. This advanced, digital-age-friendly site offers more product photo galleries, construction information, videos, the latest floorplans, specifications and other great features to assist you. Find your closest dealer, customer service info and more!



STARCRAFTCAMPING.COM

ROADSIDE ASSISTANCE. Travel worry-free with the complimentary one-year Roadside Assistance program through a third-party provider, which gives you immediate access to dependable roadside assistance with a simple phone call. Check with your local dealer to learn more (available at participating dealers).

SEE YOUR LOCAL STARCRAFT DEALER:

STARCRAFT®

THE FUTURE OF CAMPING | pure and simple.

536 Michigan Street
Topeka, IN 46571 USA

Phone: (800) 945-4787
Web: starcraftcamping.com

**FOR INTELLIGENT LIFE
FOLLOW US ON:**



All information contained in this brochure is the latest available at the time of publication approval. Starcraft reserves the right to make changes and to discontinue models without notice or obligation. Photography may show optional equipment or props used for promotional purposes. RVs built for sale in Canada may differ to conform to Canadian codes. Check with your authorized Starcraft dealer for the latest information.

Unloaded Vehicle Weight (UVW): Sometimes referred to as "Dry Weight," UVW means the typical weight of this trailer as built at the factory. The UVW, as used in product literature and other promotional materials, does not include cargo, fresh water, propane, options or dealer-installed accessories.

Gross Vehicle Weight Rating (GVWR): GVWR means the maximum permissible weight of the trailer, including UVW plus passengers, personal items, all cargo, fluids, options, and dealer-installed accessories. The GVWR is equal to or greater than the sum of the UVW and the CCC.

Cargo Carrying Capacity (CCC): Means the maximum weight of all passengers, personal items, food, fresh water, propane, tools, other cargo and dealer-installed accessories that can be carried by the trailer. CCC is equal to or less than GVWR minus UVW. The addition of options will decrease the CCC.

Hitch Weight (HW): The hitch weight, as used in product literature and other promotional materials, does not include cargo, fresh water, propane gas, options or

dealer-installed accessories. The addition of these types of items will either add to or subtract from the stated hitch weight.

It is important for your safety and enjoyment that your tow vehicle be adequately sized and equipped to tow and handle the GVWR of the RV you select. Review weights and rating of your tow vehicle and consult a competent advisor for questions or advice. Whether you are new to RVing or a veteran, get a feel for the performance of your tow vehicle before heading out on the roadways. When you tow an RV, you must drive differently than when you drive a single vehicle. Practice hooking up, driving, backing up and braking in a safe environment or seek out professional instruction. Starcraft affixes a weight label to each RV which lists weight information for that vehicle. See specifications chart in this brochure.