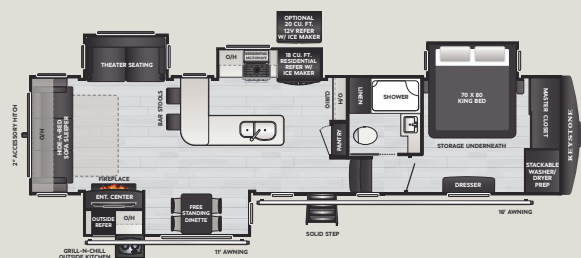


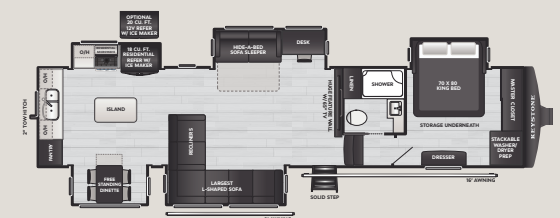
321RL

WEIGHT 12008 LENGTH 36' 6"



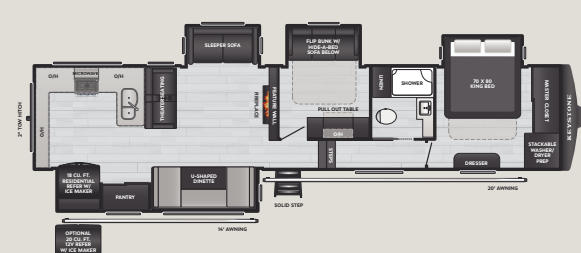
338GK

WEIGHT 12685 LENGTH 37' 11"



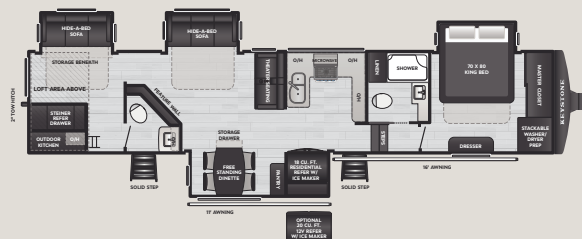
366LS

WEIGHT 14027 LENGTH 40' 10"



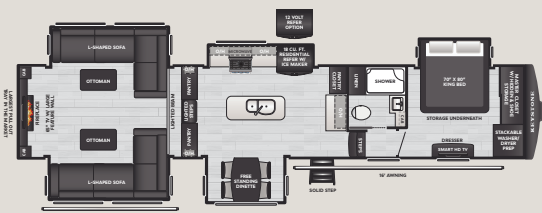
379MB

WEIGHT 14445 LENGTH 41' 11"



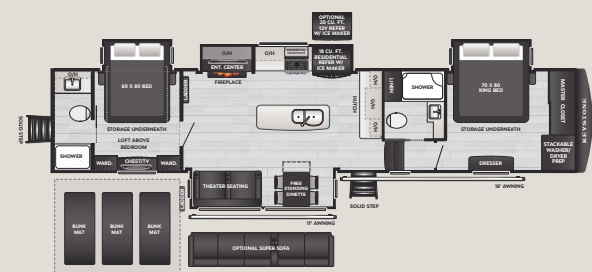
380LT

WEIGHT 14305 LENGTH 42' 4"



381DL

WEIGHT 15220 LENGTH 42' 10"



390DS

WEIGHT 14258 LENGTH 42' 11"



STANDARD FEATURES & OPTIONS

INTERIOR

- ♦ 100" Wide Body Construction
- ♦ Dramatic High Ceilings w/ 6'10" Tall Summit Slides
- ♦ Norco BAL® G 5.5 Slideout Mechanism
- ♦ Flush Floor Kitchen Slides
- ♦ Exclusive Four-Season RV Polar Pack™ Climate Protection
- ♦ Dual Coleman®-Mach® Quiet Series Power Saver™ 15K BTU Air Conditioners
- ♦ Blade Pure™ High-Performance Air Flow System w/ MERV 9 Air Filtration
- ♦ Suburban 35k BTU Gas Furnace
- ♦ Attic Vents in All Models
- ♦ 75-Gallon Fresh Water Tank
- ♦ On-Demand Tankless Water Heater
- ♦ Dove Tail and Lodge Decor Options
(SEE KEYSTONERV.COM FOR DETAILS)
- ♦ Solid Surface Countertops
- ♦ Furrion Kitchen Appliances
- ♦ Furrion 19.6 cu. ft. 12V Refrigerator or 18 cu. ft. Residential Refrigerator w/Ice Maker
- ♦ Stackable Washer & Dryer Prep
- ♦ 48" or 42" One-Piece Fiberglass Shower w/ Seat
- ♦ King Sized Beds
- ♦ JBL Sound System w/ MyZone®
- ♦ Recliner Theatre Seats

EXTERIOR

- ♦ Lippert Titan™ Hydraulic Auto-Leveling System w/ Digital Touchscreen & Under Frame LED Lighting
- ♦ Hitch Vision™ Technology in Fully Painted, Molded Front Cap
- ♦ Road Armor™ Suspension w/ 1/2" Shackle Plates
- ♦ Road Armor™ Rubberized Hitch Pin
- ♦ Cooper G-Rated Tires
- ♦ 2" Hitch Receiver w/ 4-Pin Towing Harness
(SELECT MODELS)
- ♦ Backup Camera and Side Mount Camera Prep
- ♦ Strut Assisted Solid Step®
- ♦ SolarFlex™ Protect
- ♦ Water Filtration
- ♦ 3-Way Pass-through Switches for Slides/Awnings
- ♦ Drop Frame Chassis
- ♦ Flush Floor Main Slides
- ♦ Exclusive Four-Season RV Polar Pack™ Climate Protection

OPTIONS

- ♦ Full Body Paint Options Available:
NEW Black Steel Paint
- ♦ Optional Super Sofa (SELECT MODELS)
- ♦ Slide Awning Package
- ♦ 12V Cooling Drawer
- ♦ Generator Prep
- ♦ 13.5K 3rd A/C
- ♦ SolarFlex™ Discover
- ♦ Dragonfly® Energy Lithium-Ion Batteries
- ♦ Frameless Dual-Pane Windows