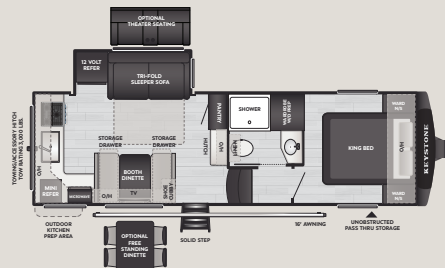


# COUGAR

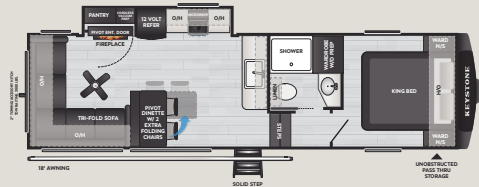
## HALF-TON

## FIFTH WHEELS

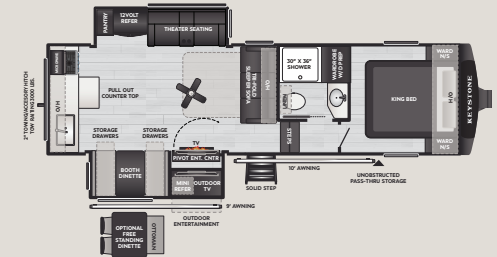
SCAN FOR MORE INFO



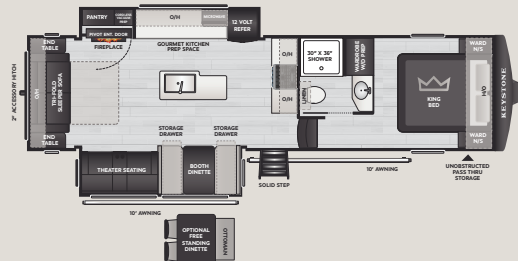
**23MLE** WEIGHT 7745 LENGTH 27'11"



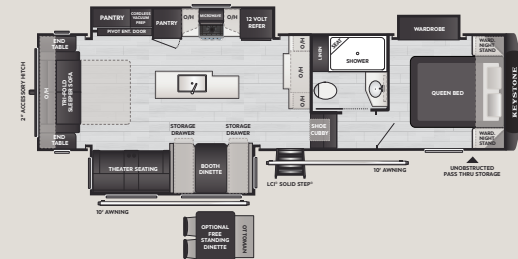
**26RES** WEIGHT 8265 LENGTH 30'11"



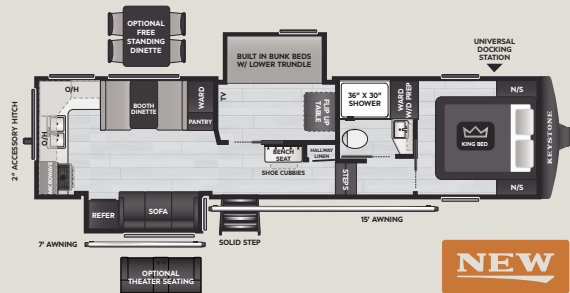
**26RKE** WEIGHT 9200 LENGTH 30'10"



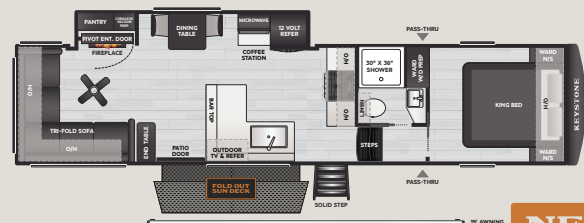
**28RLI** WEIGHT 9050 LENGTH 32'8"



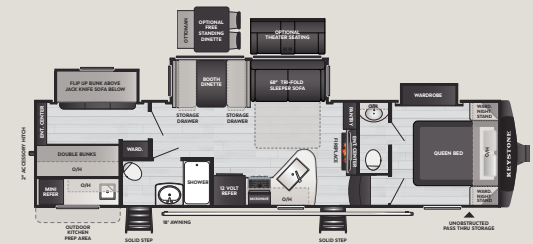
**29RLI** WEIGHT 8893 LENGTH 32'9"



**29MBD** WEIGHT 9235 LENGTH 33'11"



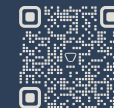
**30REP** WEIGHT TBD LENGTH 34'11"



**32BHS** WEIGHT 9428 LENGTH 35'8"



DISCLAIMER: Product information is as accurate as possible as of the date of publication of this publication. All features, floor plans, and specifications in this publication are subject to change without notice. Please also consult Keystone's web site at [www.keystonerv.com](http://www.keystonerv.com) for more current product information and specifications. Tow Vehicle Disclaimer. CAUTION: Owners of Keystone recreational vehicles are solely responsible for the selection and proper use of tow vehicles. All customers should consult with a motor vehicle manufacturer or their dealer concerning the purchase and use of suitable tow vehicles for Keystone products. Keystone disclaims any liability or damages suffered as a result of the selection, operation, use or misuse of a tow vehicle. KEYSTONE'S LIMITED WARRANTY DOES NOT COVER DAMAGE TO THE RECREATIONAL VEHICLE OR THE TOW VEHICLE AS A RESULT OF THE SELECTION, OPERATION, USE OR MISUSE OF THE TOW VEHICLE. \*Length is defined as the distance from the centerline of hitch/coupler to rear bumper of trailer. \*\* Fresh water capacity includes water heater. Please review owner's manual prior to purchase for more information on service warranties, extended use, towing and maintenance. Owner's manuals can be found at [keystonerv.com](http://keystonerv.com).



## STANDARD FEATURES & OPTIONS

### PROFESSIONAL GRADE CAMPING PACKAGE

- ♦ 55 Gallon Fresh Water Tank
- ♦ Washer/Dryer Prep (**SELECT MODELS**)
- ♦ Best In Class Unobstructed Ext. Pass Through Storage
- ♦ Extra-Wide Entry Step with Composite Step Treads
- ♦ Entry Door Privacy Shade
- ♦ Vent-All Window System
- ♦ On-Demand Water Heater
- ♦ 5-Sided Aluminum Superstructure
- ♦ AlphaPly Roof Membrane with Limited Lifetime Warranty
- ♦ Fully Walkable Roof and Slideout Roof
- ♦ Dual 30lb LP Tanks
- ♦ LP Quick Disconnect for Grilling (**ALL MODELS**)
- ♦ Power Watchdog™ Safeview Smart RV Power Inlet: 50 AMP
- ♦ Dimmable Lights in Main Slide, Living Room & Bedroom
- ♦ High Definition Smart TV
- ♦ Dual Zone Bluetooth Audio System
- ♦ Winegard 360 Plus w/ WIFI Prep, Satellite Pass-through
- ♦ 12V Charging Stations Throughout
- ♦ Blackout Roller Shades Throughout
- ♦ Linoleum Slideout Flooring
- ♦ Single Bowl Stainless Steel Kitchen Sink w/ Sink Covers
- ♦ High Rise Kitchen Faucet w/ Pullout Sprayer
- ♦ Furrion 21" Oven w/ 3 Burner Cooktop
- ♦ Universal Docking Station - Easy Winterization
- ♦ Power Tank Fill
- ♦ Exterior Awning Switch in Pass-Thru
- ♦ Water Pump Easy Access w/ Hinged Door
- ♦ Hardwood Cabinet Doors w/ Soft Close Hidden Hinges
- ♦ Key-Alike Lock System
- ♦ Under Bed Storage w/ Strut Assist
- ♦ Nightstands w/ 110 Outlets and USB Ports

- ♦ Booth Dinette w/LED Lights and Drawers
- ♦ Slide Topper Prep
- ♦ Dedicated Shower Light
- ♦ Oxygenics® Shower Head and Hose

### TOWING W/ CONFIDENCE PACKAGE WITH ABS

- ♦ MaxTurn™ Technology
- ♦ Lippert Axles w/ Anti-Lock Braking System
- ♦ Bronze Bushings, Heavy Duty 1/2 Shackle Plates & Wet Bolts
- ♦ Goodyear Endurance Tires
- ♦ Tire Linc® TPMS Prep
- ♦ Full Size Spare Tire
- ♦ Curt Helux™ Series Coil Spring Pin Box (**SELECT MODELS**)
- ♦ Curt Road Armor™ Shock Absorbing Pin Box (**SELECT MODELS**)
- ♦ Curt Road Armor™ Shock Absorbing Equalizer
- ♦ Reverse Warning Lights in Taillight
- ♦ 2" Accessory Hitch (**SELECT MODELS**)
- ♦ 2" Towing Hitch with 4 Way Plug (**SELECT MODELS**)
- ♦ Rear Observation Camera Prep

### COUGAR INNOVATION PACKAGE

- ♦ Water Management Center Providing Ind.v Shut-off Valves
- ♦ HIGH GLOSS HyperCore® Composite Sidewalls

- ♦ Hyper-Deck Water Resistant Flooring
- ♦ Color Coded & Unified Wiring System
- ♦ Giggy Box-Industry's 1st Organized 12V Wiring Box, Patented
- ♦ KeyTV™ Multisource Signal Controller, Patented
- ♦ MY KEYSTONE Owners Mobile App
- ♦ Painted Front Cap w/ Automotive Clear Coat
- ♦ Tank Guardian High Tensile Strength Strap System
- ♦ Double Welded Aluminum Frame Construction
- ♦ Tuf-Lok™ Thermoplastic Air Conditioning Duct Joiners
- ♦ Decorative Snap-In Ceiling & Crown Molding Treatments
- ♦ Power Converter with Auto-Detect Battery Recognition
- ♦ Tough-Ply Flooring in Main Storage Compartment

### CLIMATE GUARD PROTECTION PACKAGE

- ♦ 18k Furrion High Efficiency Chill Cube A/C, Ducted
- ♦ 30k BTU Furnace
- ♦ Tinted Windows
- ♦ Astro-Foil Insulated Underbelly
- ♦ 12Volt-Heat Pads on Holding Tanks
- ♦ Forced-Air Heated & Enclosed Underbelly
- ♦ Heated/Enclosed Convenience Center
- ♦ Reflective Foil in Front Cap, Slide Floors
- ♦ Dual Attic Vents
- ♦ PEX Plumbing Lines
- ♦ Insulated Gooseneck & Bulkhead Divider
- ♦ Sealed Pin Box
- ♦ Electric Fireplace (**SELECT MODELS**)
- ♦ Foil Backed, Foam Core A/C Duct with Tuf-Lok™ Joiners