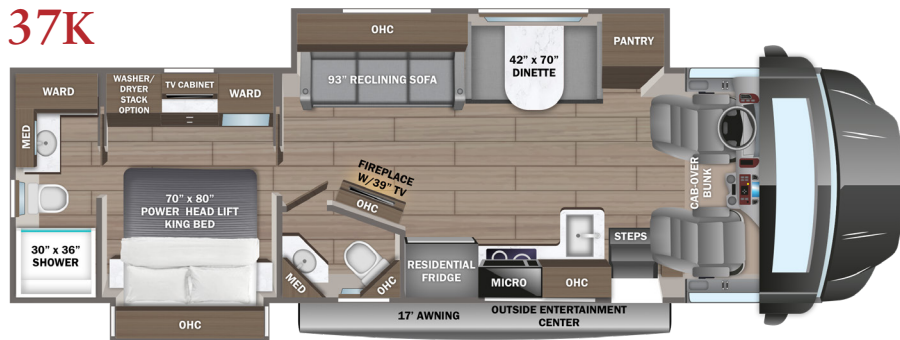


ACCOLADE

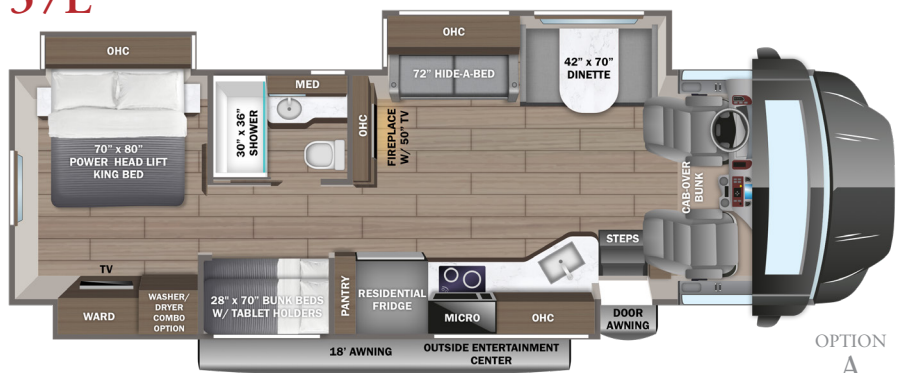
2026 Super Class C Motorhome



37K

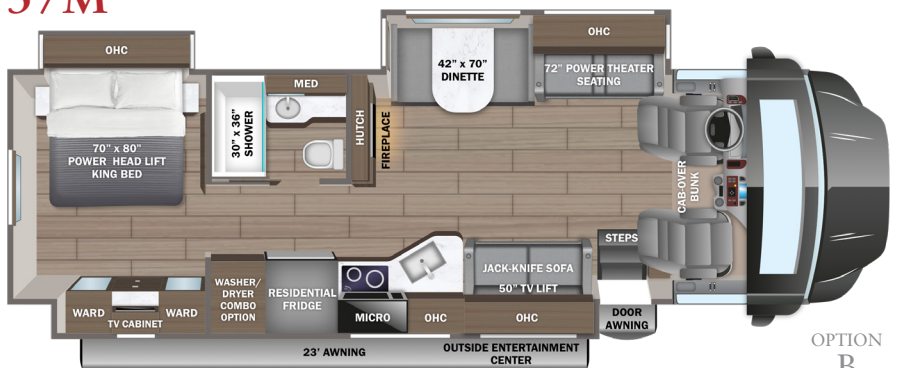


37L



OPTION
A

37M



OPTION
B

OPTIONS

A



72-inch Power
Theater Seating

B



72-inch
Hide-a-Bed Sofa

PAINT SELECTIONS



Afternoon Full-Body Paint



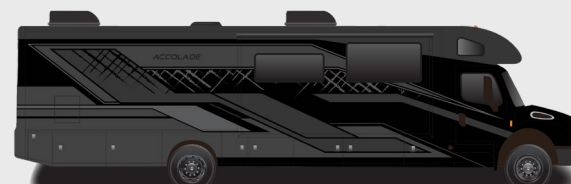
Daybreak Full-Body Paint



Dusk Full-Body Paint



Midday Full-Body Paint



Moonless Night Full-Body Paint



White Night Full-Body Paint

CUSTOMER VALUE PACKAGE

E-Z Drive™ Premier: Computer-balanced driveshaft, rear air suspension, heavy-duty rear stabilizer bar, full air brakes, SACHS shocks
One-piece, seamless fiberglass front and rear caps
Automotive-bonded panoramic window in front cap with power shade
Lippert™ 4000 series dual-pane frameless bonded windows
(2) 15,000 BTU A/C units with heat pump on main A/C
Electric patio awning with LED lights
2,000W pure sine wave inverter
Power cord reel with 50-amp service
Sony® infotainment center with tilt/swivel, Apple® CarPlay and Android Auto™
Backup and side-view cameras
Residential refrigerator
Residential-size convection microwave

STANDARD CHASSIS EQUIPMENT

Freightliner® S2RV Plus chassis
GVWR - 31,000 lb.
GCWR - 43,000 lb.
Cummins® ISB 6.7L 360 HP diesel engine with 800 ft.-lb. torque
Allison® 3000 MH automatic transmission
185-amp alternator
G-rated highway tires - 275/80R22.5
Alcoa® aluminum rims
Tire pressure monitoring system (TPMS)
Engine exhaust brake
12,000 lb. hitch with 1,200 lb. tongue capacity
7-pin plug
Dual 12V chassis batteries
100 gal. fuel tank
10 gal. DEF tank
6-way power driver and passenger seats
Deluxe heated, remote-controlled, side-view mirrors
Tilt steering wheel
Cruise control
Detroit automatic wipers/headlights
Power windows and door locks
Auxiliary start switch
Privacy curtains for cab area

STANDARD EXTERIOR EQUIPMENT

TuffShell™ vacuum-bond laminated roof, floor and sidewalls
Bead-foam insulation (R-24 max roof, R-9 max floor, R-8 max walls)
One-piece, seamless, crowned fiberglass roof
Premium Sikkens full-body paint
Automatic hydraulic leveling jacks

Entrance door with industry's largest travel-view window
Electric-powered entrance steps
Slideout cover awnings
Exterior entertainment center with JBL® outside speakers and LED
HD Smart TV mounted on swivel bracket
Winegard® In-motion satellite dish
Carpeted, full pass-through storage compartments with Keyed Alike lockable slam-latch doors
Thetford® Sani-Con Turbo macerator system
Third brake light
Roof ladder
Cable TV hookup with RG-6 coax and video selector switch
Winegard 2.0 Wi-Fi/4G antenna
8,000W diesel generator with auto-gen start
200W solar panel with dual controller
(4) 6V AGM (220Ah) house batteries on slideout tray
Transfer switch with reverse polarity protection
24.5 gal. propane tank (83 lb.)
LP quick-connect hookup
Exterior utility center
Winterization drain system
Black tank flush
Outside shower
12V demand water pump
Water filtration system

STANDARD INTERIOR EQUIPMENT

Custom-molded ABS surround in cab-over area
Overhead bunk with 750 lb. capacity
Firefly Multiplex system - wall-mounted touchscreen and mobile app for total coach control
84 in. interior ceiling height with padded vinyl ceiling
Integrated day/night cassette shades
High-intensity recessed LED ceiling lights
LED-lit fascia
Vinyl plank flooring
Hardwood cabinet doors and drawer fronts
Soft-close cabinet doors and drawers
Deluxe hidden cabinet hinges
Ball-bearing drawer guides
30,000 BTU auto-ignition furnace
Suburban tankless water heater
Electric fireplace
Entegra-exclusive, easy-operation legless dinette table
2-point lap safety belts in all designated seating locations
Car seat tethers (select floorplans)
LED HD Smart TV in living area
JBL® audio system
Wood-framed kitchen window
2-burner induction cooktop
LED-lit, solid-surface kitchen countertops with recessed stainless steel sink and sink covers

Walk-around, king-size bed with power head lift, bedspread and nightstands
USB port and wireless charging in nightstands
Under-bed storage (select models)
LED HD Smart TV in bedroom
Large wardrobes
Bunks with industry-exclusive 300 lb. capacity each (37L)
Shower with decorative surround, glass door, skylight and light
Porcelain toilet with foot flush
Recessed stainless-steel bathroom sink
Powered roof vent in bathroom with wall switch
Smoke alarm
Carbon monoxide detector
Fire extinguisher

OPTIONS

Power theater seating (37L) (STD on 37M)
Hide-a-bed sofa ILO theater seating (37M)
Combination washer/dryer (37L, 37M)
Stackable washer/dryer (37K)
Starlink satellite internet system with KING Jack™ antenna IPO
Winegard Connect 2.0
Canadian Shaw® TRAV'LER® satellite dish
Winegard® TRAV'LER® satellite dish - DIRECTV®
Slide-out tray with 12V refrigerator cooler in basement
Blackout package - includes black bumper, grille, mirrors and wheels (available with any exterior)



NO ONE OFFERS A BETTER WARRANTY

At Entegra Coach, we build our RVs to handle every adventure, then back them with our industry-leading 2+3 limited warranty. Our 2-year limited warranty has you covered for 2 camping seasons. That's 730 days. In addition, our 3-year structural limited warranty has you covered for 3 camping seasons or 1,095 days. You won't find a better limited warranty in the business, because the only strings we attach are those that deliver the ultimate in reliability. For a copy of our 2-year limited + 3-year structural limited warranty with complete terms and conditions, please contact your local Entegra Coach dealer.

It is important for your safety and enjoyment that you are aware of the weights and tow ratings of the RV you select. Consult a competent advisor for questions or advice. Whether you are new to RVing or a veteran, get a feel for the performance of your RV before heading out on the roadways. When you tow a vehicle with your RV, you must drive differently than when you drive a single vehicle. Practice hooking up, driving, backing up and braking in a safe environment or seek out professional instruction. Jayco affixes a weight label to each RV which lists weight information for that vehicle. Refer to that label to verify the vehicle will meet your requirements. Gross Vehicle Weight Rating (GVWR): The maximum permissible weight of the motorhome, including the Unloaded Vehicle Weight (UUV) plus passengers, personal items, all cargo, fluids, options and dealer-installed accessories. The GVWR is equal to or greater than the sum of the UUV and the Cargo Carrying Capacity. Gross Combined Weight Rating (GCWR): The maximum allowable combined weight of the motorhome used as a tow vehicle and the attached towed vehicle.

Floorplan	GVWR (lbs.)	GCWR (lbs.)	Wheel Base	Overall Length	Exterior Height w/ A/C & Satellite	Exterior Width	Interior Height	Fresh Water Capacity (gal.)	Grey Waste Water Capacity (gal.)	Black Waste Water Capacity (gal.)
37K	31,000	43,000	279	39' 4"	13' 4"	101	84	72	51/40	40/23
37L	31,000	43,000	279	39' 4"	13' 4"	101	84	72	51/31	50
37M	31,000	43,000	279	39' 4"	13' 4"	101	84	72	51/31	50



Part of Jayco Family of Companies

Entegra Coach, Inc., P.O. Box 460, Middlebury, IN 46540, www.entegracoach.com. See dealer for further information and prices. All information in this brochure is the latest available at the time of publication approval. Entegra Coach reserves the right to make changes and to discontinue models without notice or obligation. Photos in this brochure may show optional equipment and props for photography purposes. RVs built for sale in Canada may differ to conform to Canadian codes. ©2025 Entegra Coach, Inc. Printed in U.S.A. 2033076



entegracoach.com/accolade

LEGACY ISN'T LEFT,
IT'S LIVED.