

GRAND SPORT

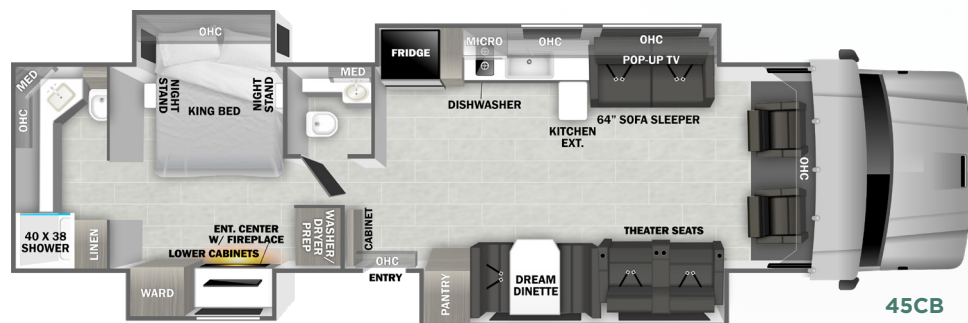
2026





GRAND SPORT

The Grand Sport's clean, contemporary styling features modern hardwood cabinetry and is equipped with all the comforts, including a king size bed, a solid surface kitchen countertop, a comfortable 64" sleeper sofa and a roomy dream dinette.



45CB

SPECIFICATIONS	45CB
GVWR (lbs.)	58,000
GCWR (lbs.)	80,000
GAWR - Front (lbs.)	18,000
GAWR - Rear (lbs.)	40,000
UVW* (lbs.)	41,590
Overall Length	44' 11"
Exterior Width	102"
Wheelbase	349"
Overall Exterior Height w/A/C	13' 0"
Interior Height	86"
Fuel Capacity (Gal.)	120
Water Capacities (Gal.) Fresh/Gray/Black	150/75/75
LPG Capacity (WC) (Gal.)	N/A
Awning Length	21' Front/12' 6" Back

*UVW is an estimate only based on standard equipment.

STANDARD FEATURES & OPTIONS

CHASSIS

- Freightliner Cascadia 126 Tandem Twin-Screw Chassis (58,000-lbs. GVWR / 80,000-lbs. GCWR)
- Detroit DD16 15.6L Diesel Engine (600hp / 1,850 lb.-ft. of Torque)
- DT-12 Efficient 12-Speed Automatic Transmission
- 3.08 Rear Axle Ratio
- Trailer Hitch (32,000, 40,000 Pintle Tow lbs., / 6,000 Tongue lbs.) with 7-Way Round Tow Connection
- 120-Gallon Fuel Capacity
- 13-Gallon Diesel Exhaust Fluid Tank
- 300-Amp Brushless Alternator
- Air Brakes with 4-Wheel ABS and Automatic Slack Adjusters
- Brake Line Air Dryer with Heater
- C-Brake by Jacobs with High/Low Settings
- Glad Hands Air Brake Connection and Controller
- 40,000-lb. Rear Air Suspension
- Automatic Rear Air Deflation System
- Rear Locking Differential
- Detroit Safety Assurance Package: Active Brake Assist, Adaptive Cruise Control, Lane Departure Warning, Detroit Connect Safety Event Viewer
- Steel-Reinforced, Aluminum Cab
- Chrome Grille
- LED Headlights
- Fog Lights
- Daytime Running Lights
- Tinted Door Glass
- Front Tires: 315/80R22.5
- Rear Tandem Tires: 295/80R22.5
- Single Front Wheels: Alcoa Aluminum (22.5" x 9.00") *Outside Rims are Polished
- Tandem Dual Rear Wheels: Alcoa Aluminum (22.5" x 8.25") *Outside Rims are Polished
- Valve Extensions
- Bendix SmartTire Banded Tire Pressure Monitoring System
- Quick Disconnect Fitting with Tire Inflation Kit
- Engine Block Heater
- Leatherette Driver and Passenger Air Ride Seats with Swivel Bases
- Bird's Eye View 360° Camera System
- 10" Touch Screen Dash Infotainment System with AM/FM, Bluetooth, Sirius/XM (Tuner and Antenna), Wired and Wireless Apple CarPlay / Android Auto Connectivity, and USB-C Port
- Multiple USB/12V Charging Ports on Dash
- Chassis Battery Shut Off Switch in Cab
- Air Horn
- One Valve Parking Brake System with Warning Indicator
- Engine After-Treatment Device, Automatic Over-the-Road Regeneration, and Dash-Mounted Regeneration Switch
- Momentary Battery Booster Switch for Connecting Chassis and House Batteries
- Marker Lights with Separate Interrupter Switch
- Low Air Pressure Light and Buzzer
- Adjustable Steering Column
- Leather-Wrapped Smart Steering Wheel
- Dual Bright Remote/Heated Mirrors
- Power Windows and Locks
- 3-Point Seat Belts

CONSTRUCTION

- 2" Aluminum-Framed, Laminated Sidewalls with High-Density Block Foam Insulation
- Azdel Exterior Fiberglass (No Exterior Wood)
- Steel Basement Structure
- One-Piece Molded Fiberglass Roof Cap over Vacuum-Bonded Aluminum Trusses and High-Density Block Foam Insulation
- Quiet Integrated Air Conditioner Intake/Ducting Roof System with Channeled Rooftop Air Conditioner Drains
- Fiberglass Rear Cap and Front Wing Panels
- Automatic, 4-Point Hydraulic Leveling Jacks
- Dual-Pane, Dark-Tinted, Frameless Square Windows with Built-In Night Shades and Screens
- Bonded Front Cap Window with Power Shade
- Steel Storage Compartments with LED Lighting
- Side-Hinged, Locking Aluminum Exterior Storage Doors with Chrome Handles
- Prepped for Ladder on Rear Cap

EXTERIOR

- Custom Full Body Paint Package with Scheme-Matching Cab Door Jambs and Slideout Sides
- Premium Cut and Buffed Paint Finish
- Front-End Diamond Shield Paint Protection
- Dual Roof-Mounted, Integrated Armless Patio Awnings with LED Lighting and Wind Sensors
- Aluminum-Wrapped Slideout Toppers
- LED Patio Light
- 30" Entry Door with Rotary Latch; Dark-Tinted, Frameless Window
- Keyless Entry Touch Pad at Entry Door
- Remote-Locking Entry Door and Exterior Storage Doors
- "One Key" Locking System for Exterior Storage Doors and Entry Door
- Lighted Acrylic Entry Grab Handle
- Power Entry Steps with Upgraded SeaDek Step Treads
- Exterior Wall-Mounted Entertainment Center with 40" LED Smart TV with Integrated JBL Sound Bar on Swivel Extension Mount
- Front and Rear LED Clearance and Marker Lighting
- Side Docking Lights
- Rear "DYNAMAX" Rock Guard

INTERIOR

- Cab-Over Bunk with Mattress and Privacy Partition (Mattress is 51" Wide and Length Tapers Back to Front from 80" to 66")
- Heated Porcelain Tile Throughout
- Deluxe Vinyl with Pad in Select Living Area Slide Rooms
- Soft-Touch Padded Vinyl Ceiling
- Powered, Flush-Floor Stepwell Cover
- Lighted Porcelain Tile Entry Surround
- Fitted Entry Step Carpet Mats
- Dimmable LED Recessed Ceiling Lights
- "Soft Touch" Sprung, Residential Style Dinette Seats with Lift Up Storage
- Home Theater Lounge with USB Ports
- Love Seat
- Hardwood Shaker-Style Cabinetry
- Hardwood Shaker-Style Passage Doors
- Full Extension, Soft-Closing Drawer Guides (where applicable)

- Dovetail Joints on Cabinet Drawers
- Hidden Hinges
- 50" LED Smart TV (Living Area)
- Sonos Ultra Arc Sound Bar with Sub-Woofer

KITCHEN

- 22 cu. ft. Residential Refrigerator with Ice Maker
- Induction Range
- Convection Microwave Oven with Air Fryer Functionality
- Solid Surface Countertops with Accent Lighting and Tile Backsplash
- Stainless Steel Sink with Solid Surface Covers
- Residential Faucet with Pull-Out Sprayer
- Storage Compartment for Sink Covers
- Dishwasher
- Power Kitchen Countertop Extension
- Pantry
- Overhead Cabinet Accent Lighting
- Under-Cabinet Lighting
- MaxxAir Power Vent with Built-In Rain Cover

BEDROOM

- King Bed (70" x 80")
- Deluxe Padded Headboard
- Designer Bedding Package
- 43" LED Smart TV
- Fireplace
- Digital Safe in Wardrobe
- Nightstands with Solid Surface Countertops
- LED Reading Lights
- USB Charging Ports

BATHROOM

- Solid Surface Shower (38" x 40")
- Teak Fold-Down Seat in Shower
- Glass Shower Door
- Shower Skylight
- Deluxe Multi-Shower Head System
- Shower Miser
- Solid Surface Countertops with Tile Backsplashes
- Under-Mount Sinks with Residential Faucets
- Back-Lit Vanity Mirrors
- Porcelain Electronic-Flush Macerator Toilet (45CB: Rear Full Bath and Mid Bath)
- MaxxAir Power Vent with Built-In Rain Cover

UTILITIES

- Three (3) Low-Temp Lithium House Batteries (486Ah Total)
- Four (4) 200W Glass Solar Panels with MPPT Controllers
- 2,800W Hybrid Pure Sine Wave Inverter/Charger
- 50-Amp Service with 34' Power Cord Reel
- PrecisionPlex Multiplex Wiring with Touch Screen Command Center with Bluetooth Smart Phone App Control
- 10kW Onan Diesel Generator with Auto Transfer Switch (Mounted on Isolator Pads)
- Automatic Generator Start
- Energy Management System (EMS)
- Battery Disconnect
- Three (3) Ducted, Low-Profile 15,000-BTU Air Conditioners with Heat Pumps
- Oasis Hydronic Diesel Heat System with Continuous Hot Water
- Stackable Washer/Dryer
- Central Vacuum System

- Water Filtration System
- Exterior Shower in Service Bay
- Power Water Hose Reel in Service Bay
- Exterior GFCI Receptacle
- Starlink Satellite Internet System
- Winegard OTA HDTV Antenna
- 4x4 HDMI Matrix
- Cable TV/Satellite Hookup in Service Bay
- Thetford Sani-Con Turbo Macerator System
- 4-Way Water Management Valve in Sewer Bay
- Black Tank Flush
- Pressure Sense Tank Level Monitoring System
- Utility Compartment Heated by Oasis System
- Enclosed Holding Tanks Heated by Oasis System
- Upgraded 12V On-Demand Water Pump (4 gallons per minute)
- Carbon-Monoxide, LP, and Smoke Detectors
- Fire Extinguisher

OPTIONS

- Free-Standing Dinette with Hutch and Four (4) Chairs in place of Booth Dinette

DYNAMAX

2745 Northland Dr. • Elkhart IN 46514
574-262-3474 • www.dynamaxcorp.com

GVWR (Gross Vehicle Weight Rating) - is the maximum permissible weight of the unit when fully loaded. It includes all weights, inclusive of all fluids, occupants, cargo, optional equipment and accessories. For safety and product performance do NOT exceed the GVWR.

GCWR (Gross Combined Weight Rating) - is the maximum permissible loaded weight of your motor home and any towed trailer or towed vehicle. Actual GCWR of this vehicle may be limited by the sum of the GVWR and the installed hitch receiver maximum capacity rating; see hitch rating label for detail.

GAWR (Gross Axle Weight Rating) - is the maximum permissible weight, including cargo, fluids, optional equipment and accessories that can be safely supported by each axle.

UVW (Unloaded Vehicle Weight)** - is the typical weight of the unit as manufactured at the factory. It includes all weight at the unit's axle(s), including full fuel, all fluids and LP Gas. The UVW does not include cargo, fresh potable water, additional optional equipment or dealer installed accessories.

*Estimated Average based on standard build optional equipment.

CCC (Cargo Carrying Capacity)** - is the amount of weight available for fresh potable water, cargo, passengers, additional optional equipment and accessories. CCC is equal to GVWR minus UVW. Available CCC should accommodate fresh potable water (8.3 lbs per gallon). Before filling the fresh water tank, empty the black and gray tanks to provide for more cargo capacity.

**Estimated average based on standard build optional equipment.

Each Forest River RV is weighed at the manufacturing facility prior to shipping. A label identifying the unloaded vehicle weight of the actual unit and the cargo carrying capacity is applied to every Forest River RV prior to leaving our facilities.

The load capacity of your unit is designated by weight, not by volume, so you cannot necessarily use all available space when loading your unit.

Actual towing capacity is dependent upon your particular loading and towing circumstances, which includes the GVWR, GAWR and GCWR as well as adequate trailer brakes. Please refer to the Operator's Manual of your vehicle for further towing information.

All information contained in this brochure is believed to be accurate at the time of publication. However, during the model year, it may be necessary to make revisions and Forest River, Inc., reserves the right to make all such changes without notice, including prices, colors, materials, equipment and specifications as well as the addition of new models and the discontinuance of models shown in this brochure. Therefore, please consult with your Forest River dealer and confirm the existence of any materials, design or specifications that are material to your purchase decision.

©2025 Dynamax, a Division of Forest River, Inc., a Berkshire Hathaway company. All Rights Reserved. 11/25



FREE MEMBERSHIP
to Forest River Owners' Group

www.forestriverfrog.com



Dynamax Owner "Digital Kit" App

Now you can have your Owner's Manual with you wherever you are. Download our FREE App from the App Store or Google Play and you'll have the information right at your fingertips.



Paint Video

<https://www.youtube.com/watch?v=sLgLoR26jfs>

Factory Video Tour

<https://www.youtube.com/watch?v=q5cG43PD7SE>



Learn More:

Scan this barcode using a QR reader on your smart phone to learn more about Forest River.



FOREST RIVER

A Berkshire Hathaway Company

Your Authorized Grand Sport Dealer