

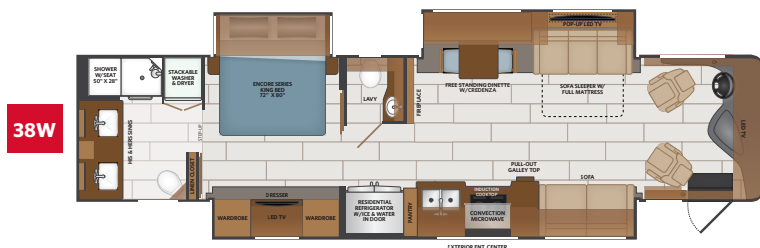
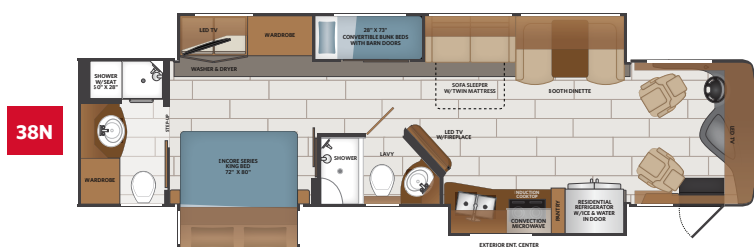


TOP FEATURES

- Freedom Bridge®
- Aqua Hot 400D
- (3) 15,000 BTU A/C units w/rear heat pump
- Full Hand laid porcelain flooring throughout
- Heated floor in living area
- Safe-T-View allows your side view and backup cameras to be displayed on your interior televisions. *Acting as a built in video system*
- MultiPlex house controls that can be controlled by your smart phone or tablet
- Maintenance free citadel lined luggage compartments
- One piece fiberglass exterior roof
Sleek appearance, low maintenance and long lasting durability
- Generous interior and exterior storage plus large holding tank capacities
- Residential styled furniture by Apex Custom Furniture

Freightliner® Custom Chassis Features

- XCM Chassis
- Cummins 6.7L, 360HP Engine
- V-Series Suspension System with the VFS Front Suspension
- V-Ride™ Technology (*enhanced stability*)
- BrakeSync (*standard*)
- Tire Pressure Monitoring (*standard*)



AVAILABLE OPTIONS

- Dishwasher
- Motion Power Lounge
- Hide-A-Loft™ Electric Drop Down Bed
- Mid-Ship LED TV (38W)
- L- Shaped Dinette (38N)
- Dream Dinette (38W)
- Free Standing Dinette w/Credenza (38N)
- Technology Package (Wi-Fi Extender Pro Pack w/LTE, Cell Booster, 330W Solar Panel, Collision Mitigation by MobileEye, FireFly Eclipse Module - enabling remote access from app via WiFi)

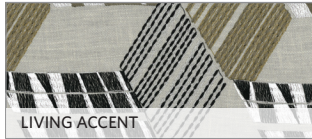


TO LOCATE A DEALER NEAR YOU VISIT OUR WEBSITE AT FLEETWOODRV.COM

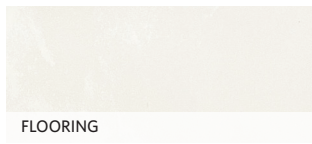
AMARETTO



SOFA



LIVING ACCENT



FLOORING



BEDDING



BACKSPLASH



COUNTERTOP



VALANCE

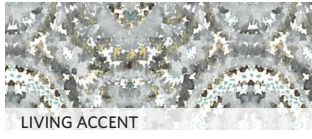


WINTER FOG

ANTHOLOGY



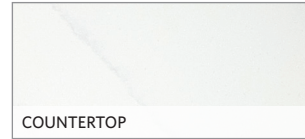
SOFA // ROASTED ALMOND & WINTER FOG OPTION ONLY



LIVING ACCENT



BEDDING



COUNTERTOP



SOFA // SEDONA & METROPOLITAN OPTION ONLY



FLOORING



BACKSPLASH



VALANCE



HAZELNUT

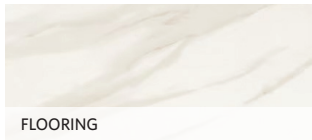
SERENITY



SOFA



LIVING ACCENT



FLOORING



BEDDING



BACKSPLASH



COUNTERTOP



VALANCE



SEDONA

CHASSIS

MODEL	38N	38W
Wheelbase	252"	263"
Front GAWR (lbs)	12,600	12,600
Rear GAWR (lbs)	21,000	21,000
GCWR (lbs)	43,600	43,600
Hitch Rating Weight (lbs)	10,000	10,000
Tongue Weight (lbs)	1,000	1,000
Fuel Capacity (gal)	100	100

FREEDOM BRIDGE® CHASSIS

Model: Freightliner® Custom Chassis - XCM
Engine: Cummins ISB 6.7L, 360HP
Torque: 800 lb.-ft. @ 1,800 RPM
Transmission: Allison® 3,000 MH 6-Speed
Alternator: Delco Remy 160 Amp



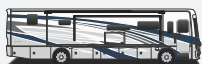
DIMENSIONS & CAPACITIES

MODEL	38N	38W
Overall Length	38' 8"	40' 1"
Overall Height	12' 10"	12' 10"
Overall Width*	102"	102"
Interior Height*	84"	84"
Interior Width*	96"	96"
Patio Awning Width	18'	18'
Interior Storage (cu. ft.)	148	132
Exterior Storage (cu. ft.)	127	142
Fresh Water Capacity (gal)	105	105
Grey Water Capacity (gal)	75	75
Black Water Capacity (gal)	50	50

*Overall Width, Interior Height and Interior Width measured with slide-box in.

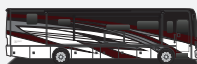
EXTERIORS

NEW
EXTERIOR
MY2026



COUNTRYSIDE

NEW
EXTERIOR
MY2026



FOUNDRY

NEW
EXTERIOR
MY2026



GOTHAM



LAKEHOUSE

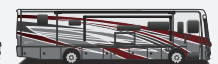


REFLECTION

NEW
EXTERIOR
MY2026



RETREAT



TEMPEST