

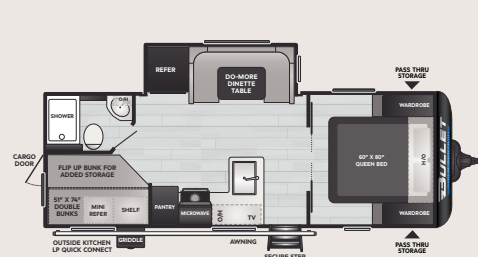


**KEYSTONE**  
RV COMPANY

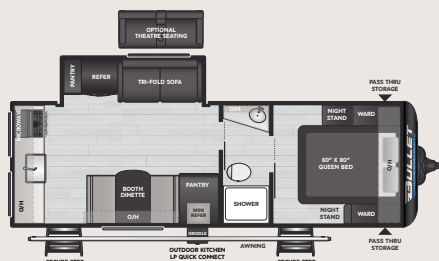
**CAMP BETTER**  
KINDNESS · COMMUNITY · PLANET

# BULLET

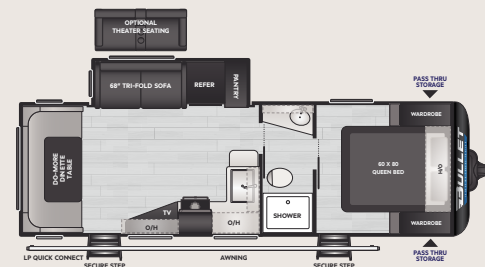
CROSSFIRE TRAVEL TRAILERS



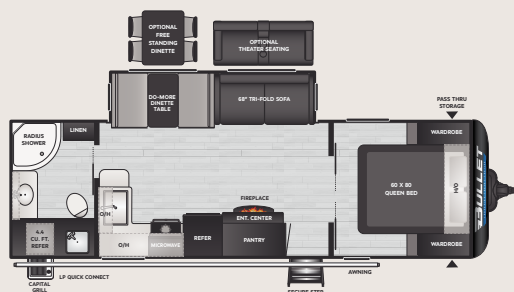
**2290BH** | WEIGHT **5585** | LENGTH **27' 0"**



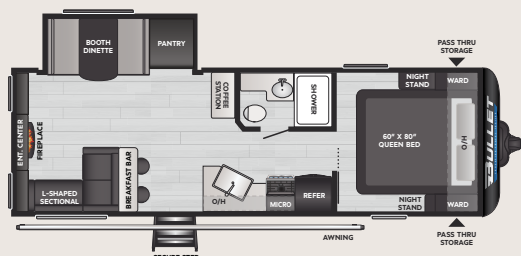
**245RKS** | WEIGHT **6050** | LENGTH **28' 8"**



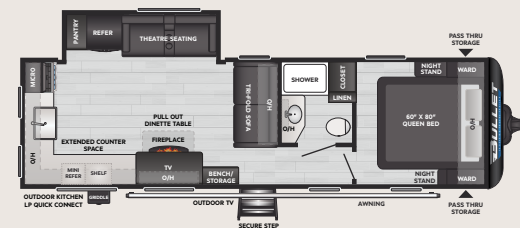
**2530RD** | WEIGHT **5960** | LENGTH **29' 10"**



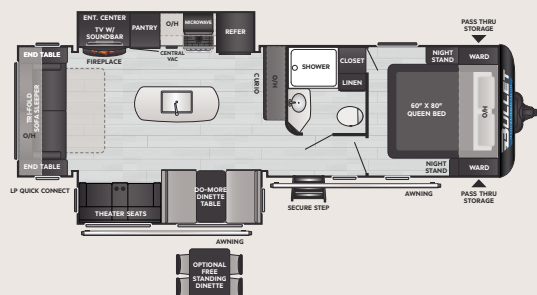
**260RBS** | WEIGHT **6495** | LENGTH **30' 6"**



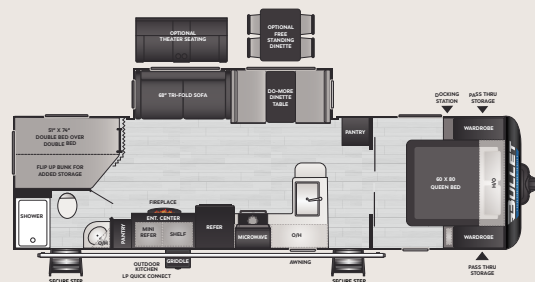
**266RLS** | WEIGHT **6435** | LENGTH **30' 8"**



**270RKS** | WEIGHT **6960** | LENGTH **31' 11"**



**287RLS** | WEIGHT **7198** | LENGTH **32' 7"**



**290BHS** | WEIGHT **6525** | LENGTH **33' 3"**

DISCLAIMER: Product information is as accurate as possible as of the date of publication of this publication. All features, floor plans, and specifications in this publication are subject to change without notice. Please also consult Keystone's web site at [www.keystonerv.com](http://www.keystonerv.com) for more current product information and specifications. Tow Vehicle Disclaimer. CAUTION: Owners of Keystone recreational vehicles are solely responsible for the selection and proper use of tow vehicles. All customers should consult with a motor vehicle manufacturer or their dealer concerning the purchase and use of suitable tow vehicles for Keystone products. Keystone disclaims any liability or damages suffered as a result of the selection, operation, use or misuse of a tow vehicle. KEYSTONE'S LIMITED WARRANTY DOES NOT COVER DAMAGE TO THE RECREATIONAL VEHICLE OR THE TOW VEHICLE AS A RESULT OF THE SELECTION, OPERATION, USE OR MISUSE OF THE TOW VEHICLE. \*Length is defined as the distance from the centerline of hitch pin/coupler to rear bumper of trailer. \*\* Fresh water capacity includes water heater. Please review owner's manual prior to purchase for more information on service warranties, extended use, towing and maintenance. Owner's manuals can be found at [keystonerv.com](http://keystonerv.com).

VISIT OUR WEBSITE FOR PHOTOS,  
360° TOURS, AND FULL PRODUCT DETAILS





**KEYSTONE**  
RV COMPANY

**CAMP BETTER**  
KINDNESS · COMMUNITY · PLANET

# BULLET

CROSSFIRE TRAVEL TRAILERS

## STANDARD FEATURES & OPTIONS

### INTERIOR

- ♦ **NEW** Tranquil Timber Interior Decor
- ♦ **NEW** Interior Line Lights w/ Dimmer
- ♦ **NEW** Upgraded Hardwood Window Trim and Sills
- ♦ **NEW** Black Stainless Steel Farm Sink
- ♦ **NEW** Waterfall Kitchen Faucet w/ Pull-Out Sprayer
- ♦ **NEW** Rainfall Shower Head
- ♦ **NEW** Decorative Bedspread
- ♦ **NEW** Combo Microwave and Air Fryer/Convection Oven
- ♦ Porcelain Foot-Flush Toilet
- ♦ Residential 60" x 80" Queen Bed
- ♦ Premium Pull Down Roller Shades
- ♦ 68" Tri-Fold Sofa (SELECT MODELS)
- ♦ Residential-Style Bathroom Countertops
- ♦ Skylight Above Every Shower and Tub
- ♦ Fireplace (SELECT MODELS)
- ♦ LED Lighting Throughout
- ♦ Seamless Kitchen Countertops
- ♦ 10 cu. ft. Double-Door 12V Refrigerator
- ♦ 12V Smart TV, FM, AUX Input, Bluetooth w/ Built in Sound Bar
- ♦ 3-Burner High Output Range W/ Glass-Top and Oven

### EXTERIOR

- ♦ **NEW** Edge View Exterior Line Lighting
- ♦ **NEW** High Impact Thermoset Resin Painted Front Cap w/ Rock Guard
- ♦ **NEW** Dexter® Torsion Axle Rubber Ride Suspension w/ 10-Year Warranty
- ♦ **NEW** Extra Long Spray Hose W/ Outside Shower w/ Hot & Cold
- ♦ **NEW** Glass Entry Door W/ Deadbolt
- ♦ 4-Point Power Stabilizer Jacks
- ♦ Power Tongue Jack
- ♦ Goodyear® Endurance® Tires
- ♦ Heated and Enclosed Underbelly
- ♦ Solid Entry Steps
- ♦ 80% Tinted Safety Glass Windows
- ♦ Rear Accessory Hitch
- ♦ JBL® Exterior Speakers
- ♦ Outdoor Kitchen W/ Griddle Cooktop & Mini Refrigerator (SELECT MODELS)
- ♦ SolarFlex™ Protect 220

### OPTIONS

- ♦ 15K BTU A/C
- ♦ 2nd 13.5K BTU A/C (SELECT MODELS)
- ♦ SolarFlex™ Discover 440i W/ Inverter
- ♦ (2) 100 AMP Hour Dragonfly® Lithium-Ion Batteries
- ♦ Theater Seating IPO Tri-Fold Sofa (SELECT MODELS)
- ♦ Freestanding Table & Chair IPO Booth Dinette (SELECT MODELS)



DISCLAIMER: Product information is as accurate as possible as of the date of publication of this publication. All features, floor plans, and specifications in this publication are subject to change without notice. Please also consult Keystone's web site at [www.keystonerv.com](http://www.keystonerv.com) for more current product information and specifications. Tow Vehicle Disclaimer. CAUTION: Owners of Keystone recreational vehicles are solely responsible for the selection and proper use of tow vehicles. All customers should consult with a motor vehicle manufacturer or their dealer concerning the purchase and use of suitable tow vehicles for Keystone products. Keystone disclaims any liability or damages suffered as a result of the selection, operation, use or misuse of a tow vehicle. KEYSTONE'S LIMITED WARRANTY DOES NOT COVER DAMAGE TO THE RECREATIONAL VEHICLE OR THE TOW VEHICLE AS A RESULT OF THE SELECTION, OPERATION, USE OR MISUSE OF THE TOW VEHICLE. \*Length is defined as the distance from the centerline of hitch pin/coupler to rear bumper of trailer. \*\* Fresh water capacity includes water heater. Please review owner's manual prior to purchase for more information on service warranties, extended use, towing and maintenance. Owner's manuals can be found at [keystonerv.com](http://keystonerv.com).

VISIT OUR WEBSITE FOR PHOTOS,  
360° TOURS, AND FULL PRODUCT DETAILS

