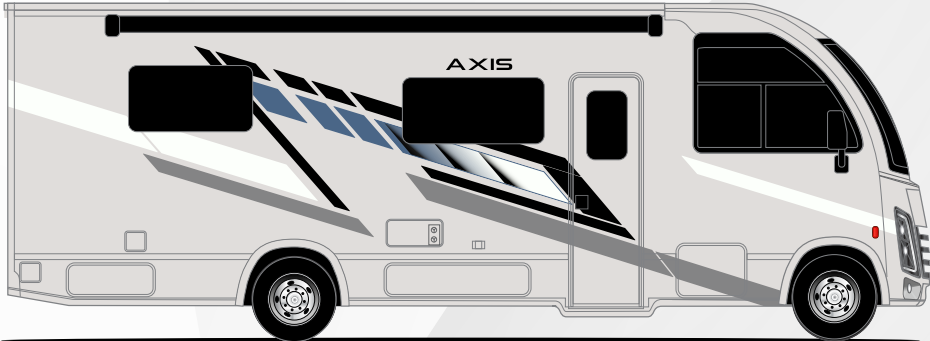


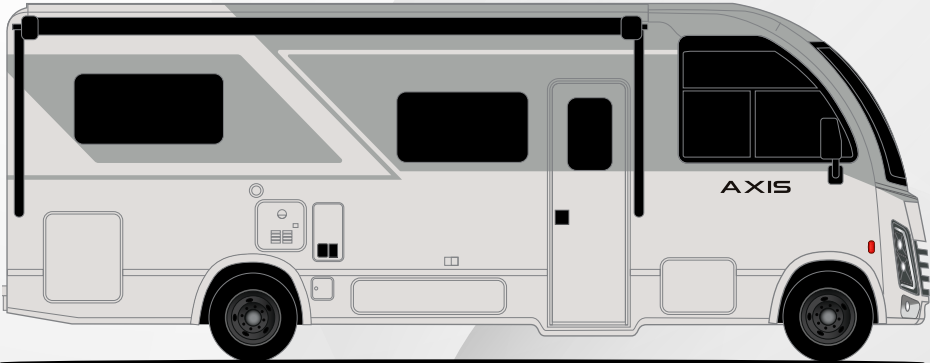
# AXIS



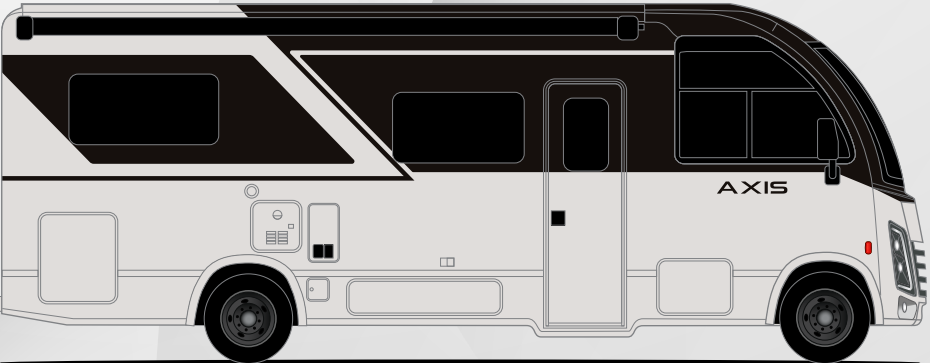
Use your phone's camera to find out more information. Just scan the code!



SKYFALL BLUE QHD-MAX



MERCURY EDITION - PARTIAL PAINT

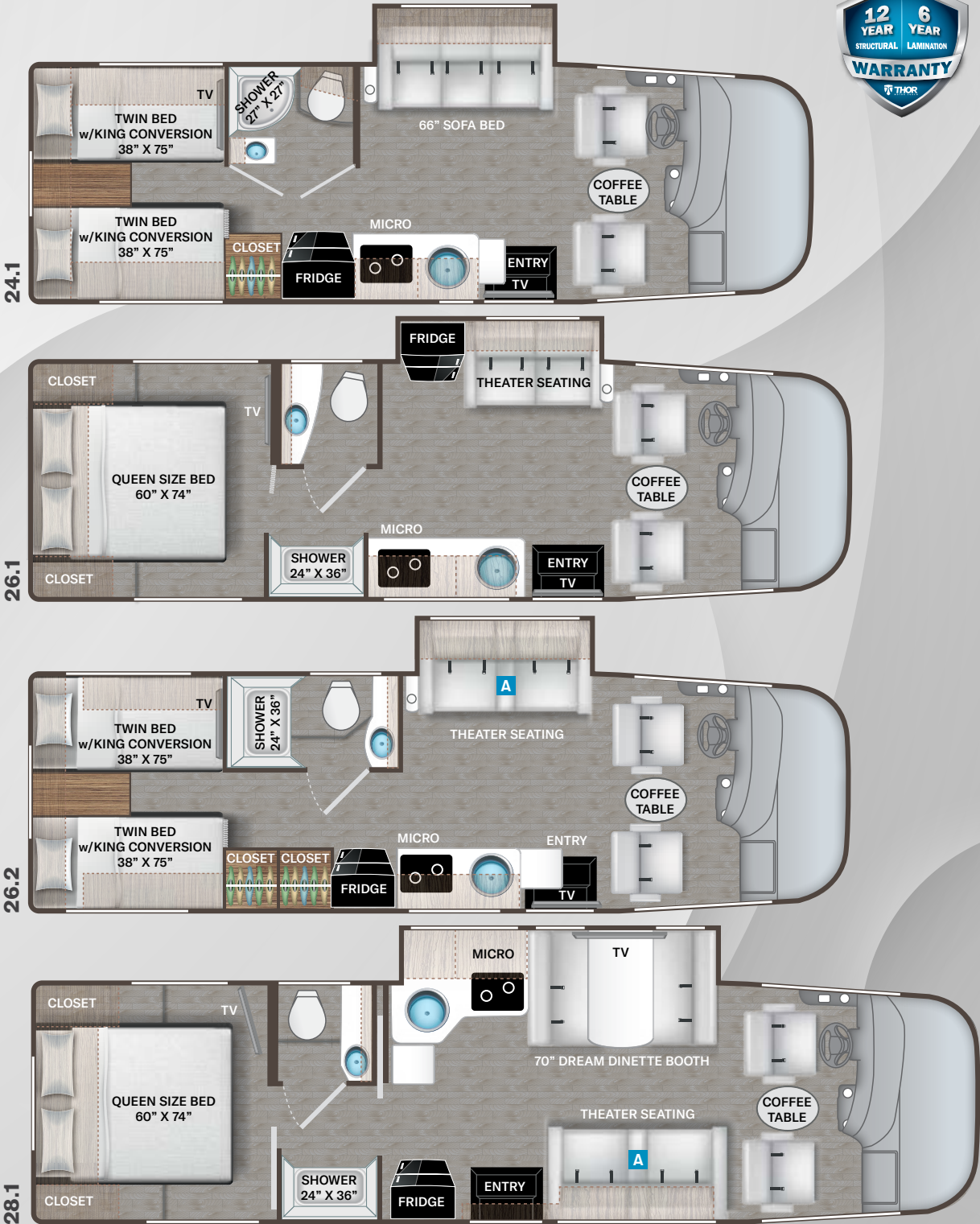


NIGHTFALL EDITION II - PARTIAL PAINT

Option Available on Select Floor Plans:



SOFA





# AXIS



Use your phone’s camera to find out more information. Just scan the code!



P.O. Box 1486, Elkhart, IN 46515  
Sales Department: 800.860.5658

### CONSTRUCTION & EXTERIOR

- Ford® E-Series Chassis – TorqShift® 6-Speed Automatic with Overdrive Transmission
- Welded Tubular Steel Floor
- Welded Tubular Aluminum Roof & Sidewall Cage Construction
- Premium One-Piece Domed Roof Membrane
- One-Piece Fiberglass Front Cap
- TPO Upper Rear Cap
- HD-MAX® Exterior with Graphics Package & Wheel Simulators
- Lighted Rotocast Storage Compartments
- Flush Mount Radius Compartment Doors
- Lateral Arm Power Patio Awning with Integrated LED Lighting
- Slideout Room Topper Awning(s)
- Entry Door Grab Handle
- Black Frameless Windows
- Roof Ladder
- 8,000-lb. Trailer Hitch with 7-Pin Round Connector

### CONSTRUCTION & EXTERIOR OPTION

- Electric Stabilizing System
- Slideout Griddle (26.1)
- Partial Paint Package with Black Aluminum Wheels

### AUTOMOTIVE & COCKPIT

- 14” Touchscreen Dash Radio with Bluetooth®, Android Auto®, Apple CarPlay™ & SiriusXM® Radio
- Heated/Remote Exterior Mirrors with Integrated Side View Cameras
- Steering Wheel Audio & Camera Control
- Tilt & Telescoping Steering Wheel
- Reclining/Swivel Leatherette Captain's Chairs with Stow-Away Coffee Table
- Emergency Engine Start Switch

For a complete listing of specifications and available features, visit: [thormotorcoach.com/axis](http://thormotorcoach.com/axis)

**IMPORTANT–PLEASE READ:** This brochure reflects product design, fabrication, material, components and specifications at the date of printing, which date is disclosed below. Please visit us online at [ThorMotorCoach.com](http://ThorMotorCoach.com) or consult with your selling dealership for the latest in standards, options, specification and technical information. Photographs in the brochure may depict optional equipment or may only be available in certain floor plans. Components, appliances and the chassis may have been manufactured in a calendar year before the vehicle's designated model year. All capacities are approximate. The actual length of the vehicle may differ from that indicated in the brochure due to variances in the manufacturing processes and/or installed components. All dry weights are based on standard model features and do not include optional features or equipment. Component part and appliance manufacturers issue limited warranties covering portions of the vehicle not covered under the limited warranty we issue. Copyright Thor Motor Coach, Inc. © MY 05/08/2025

- Cruise Control
- Map Light
- Fog Lights
- Power Privacy Shade on Windshield
- 16” Tires with Wheel Simulators
- Valve Stem Extenders on Rear Wheels
- Dash Workstation with 110-volt & 12-volt Outlets

### AUTOMOTIVE & COCKPIT OPTION

- Power Driver's Seat
- Power Drop-Down Hide-Away Overhead Bunk with Cotton Cloud™ Mattress & Bunk Ladder

### INTERIOR

- Rubber Tread Entry Steps with Lighted Step Well
- Residential Vinyl Flooring
- 82” Interior Ceiling Height
- LED Lighting
- Ceiling Ducted Air Conditioning System
- Sea Pearl Decor with Napa Collection Two-Tone Cabinetry & Satin Nickel Hardware
- Full Extension Soft Close Metal Ball-Bearing Drawer Guides
- Dream Dinette® Booth with Cup Holders & Storage Drawer Access (28.1)
- Leatherette Tri-Fold Sofa with Adjustable Side Tables in Arm Rests (24.1)
- Leatherette Theater Seating with Integrated Footrests & Adjustable Side Tables in Arm Rests (26.1, 26.2 & 28.1)
- Fabric Valance with Interior Framed Windows
- Window Privacy Roller Shades
- Wireless Phone Charger with USB Plug

### INTERIOR OPTIONS

- Mica Decor with Coastal Cream Two-Tone Cabinetry and Satin Nickel Door Hardware

- Leatherette Tri-Fold Sofa with Adjustable Side Tables in Arm Rests (26.2)
- Leatherette Jackknife Sofa with Adjustable Side Tables in Arm Rests (28.1)

### KITCHEN

- 12-volt Double Door Refrigerator
- Two Burner Gas Cooktop, Glass Cover with Electric Start
- Pop-up Countertop Outlet with Charging Outlets
- Protective Cover & Task Lighting Above Cooktop (24.1, 26.1 & 26.2)
- Range Hood with Task Lighting Above Cooktop (28.1)
- Convection Microwave Oven with Air Fryer
- Pressed Laminate Countertop with Sink Cover
- Flip-Up Countertop Extension (24.1, 26.2 & 28.1)
- Large Undermount Stainless Steel Single Bowl Sink with Cover & Single Handle Chrome Kitchen Faucet with Pull-Down Sprayer
- Kitchen Countertop Accent LED Lighting
- Waste Basket
- 12-volt Attic Fan with Switch

### BEDROOM & BATHROOM

- Two (2) Twin Sofa Beds with Upholstered Covers & King Conversion (24.1 & 26.2)
- Queen Size Bed (26.1 & 28.1)

- Bedspread & Pillow Shams
- Headboard
- Bedroom USB Charging Center for Electronics
- Bedroom 12-volt Outlet for CPAP Machine
- Large Dual Wardrobes (26.1 & 28.1)
- 12-volt Attic Fan with Cover in Bedroom
- Foot Flush Porcelain Toilet (24.1, 26.1 & 26.2)
- Macerator Porcelain Toilet (28.1)
- Stainless Steel Bathroom Sink
- 12-volt Power Vent in Bathroom with Wall Switch
- Robe Hooks Inside Bath
- Skylight in Shower
- Shower with Curved Rod & Curtain (24.1)
- Shower with Curved Anti-Microbial Shower Curtain (26.1 & 26.2)
- Shower with Glass Door (28.1)

### ENTERTAINMENT

- 40” LED Smart TV in Living Area (28.1)
- 32” LED Smart TV in Living Area (24.1, 26.1 & 26.2)
- 32” LED Smart TV in Bedroom
- Winegard® ConnecT™ 2.0 WiFi / 4G / TV Antenna
- Cable TV Ready
- Satellite Mounting Backer in Roof

SPECIFICATIONS	24.1	26.1	26.2	28.1
Chassis	Ford	Ford	Ford	Ford
Gross Vehicle (GVWR)	12,500	14,500	14,500	14,500
Gross Combined (GCWR)	18,500	22,000	22,000	22,000
Wheel Base	188"	188"	188"	209"
Exterior Length (w/o ladder)	25'-8"	27'-2"	27'-2"	30'
Exterior Height (w/AC)	11'-0"	11'-0"	11'-0"	11'-0"
Exterior Width (w/o mirrors)	94"	94"	94"	94"
Interior Height (living area)	82"	82"	82"	82"
Awning Size	16'	16'	16'	20'
Fuel (gal)	55	55	55	55
LPG (lbs)	40.9	40.9	40.9	40.9
Fresh/Waste/Gray Water (gal)	41 / 30 / 40	40 / 30 / 40	41 / 30 / 40	40 / 30 / 40
Water Heater (gal)	Tankless	Tankless	Tankless	Tankless
Furnace (BTUs)	35,000	35,000	35,000	35,000
Exterior Storage Capacity (cu. ft.)	68.8	73.7	71.5	80.1
Hitch Rating (lbs.)	8,000	8,000	8,000	8,000