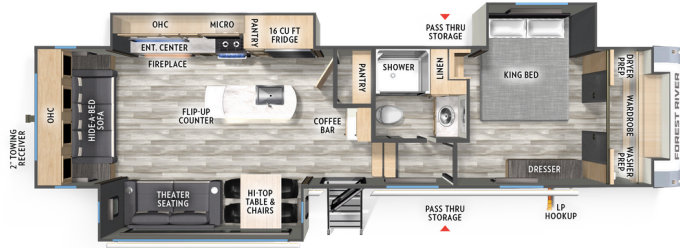
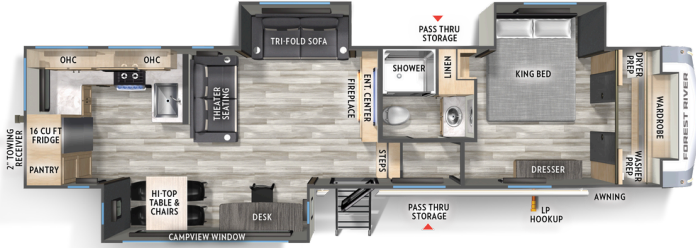


WILDCAT



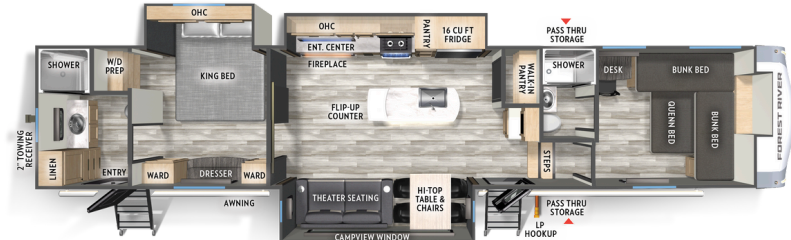
32LIVE *HITCH: 1,935 *GWR: 13,935 *UW: 10,363 CCC: 3,572 **LENGTH: 36' 6"
EXT. HEIGHT: 13' 3" *WIDTH: 96" ‡TANKS (F/B/G): 60 38 38 AWNINGS: 15' & 11'



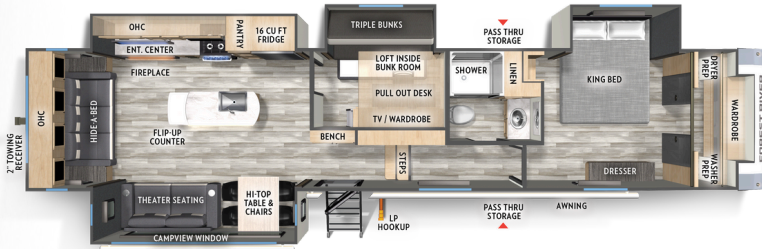
33CHEF *HITCH: 1,885 *GWR: 13,885 *UW: 10,558 CCC: 3,327 **LENGTH: 38' 3"
EXT. HEIGHT: 13' 3" *WIDTH: 96" ‡TANKS (F/B/G): 60 38 76 AWNINGS: 15' & 11'



35FL *HITCH: 2,115 *GWR: 14,115 *UW: 10,708 CCC: 3,407 **LENGTH: 43' 5"
EXT. HEIGHT: 13' 2" *WIDTH: 96" ‡TANKS (F/B/G): 60 38 76 AWNING: 15'



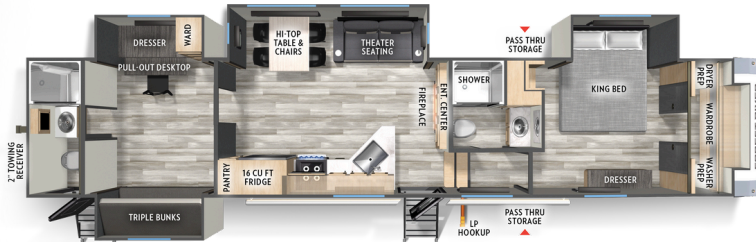
35FUN *HITCH: 2,135 *GWR: 14,135 *UW: 11,913 CCC: 2,222 **LENGTH: 42' 7"
EXT. HEIGHT: TBD *WIDTH: 96" ‡TANKS (F/B/G): 50 76 46 AWNINGS: 13' & 12'



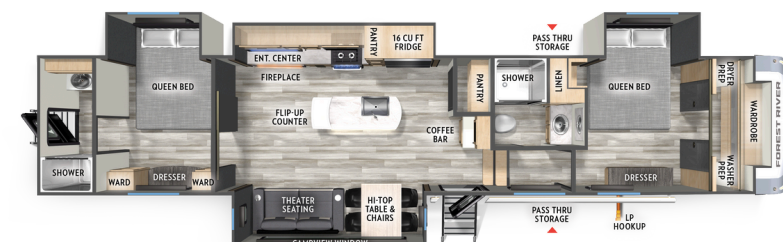
36MB *HITCH: 2,335 *GWR: 14,335 *UW: 11,538 CCC: 2,797 **LENGTH: 42' 7"
EXT. HEIGHT: 13' 2" *WIDTH: 96" ‡TANKS (F/B/G): 60 45 45 AWNINGS: 19' & 11'



37BEST *HITCH: 2,210 *GWR: 15,498 *UW: 12,698 CCC: 2,800 **LENGTH: 43' 7"
EXT. HEIGHT: TBD *WIDTH: 96" ‡TANKS (F/B/G): 50 76 76 AWNING: 15'



41DREAM *HITCH: 2,150 *GWR: 14,908 *UW: 12,208 CCC: 2,700 **LENGTH: 43' 3"
EXT. HEIGHT: 13' 6" *WIDTH: 96" ‡TANKS (F/B/G): 60 76 114 AWNING: 19'



402BEDS *HITCH: 2,175 *GWR: 14,800 *UW: 12,353 CCC: 2,447 **LENGTH: 42' 3"
EXT. HEIGHT: TBD *WIDTH: 96" ‡TANKS (F/B/G): 60 76 76 AWNINGS: 10.5' & 14'

STANDARDS & OPTIONS

CLIMATE PACKAGE

- Vacuum Bonded, Welded Aluminum Structure
- Best-In-Class Size, High Efficiency 35,000 BTU Furnace
- 12V Tank Heaters
- 18,000 BTU Ducted A/C System w/ Second & Third A/C Prep
- 60,000 BTU On Demand Tankless Water Heater
- Dual Roof Vents For Breathable Attic
- Electric Fireplace w/ Thermostat Control & Remote
- PVC Roof Membrane w/ Lifetime Warranty
- 4'X6' Sectioned ABS Plastic Underbelly Armor

- 50 Amp Service
- Dual 20 lb. LP Tanks
- Sidewalls: 2" High Density Block Foam Insulation
- Roof: Residential Fiberglass Insulation
- Floor: Residential Fiberglass Insulation w/ 5/8" Tongue & Groove Plywood

EXPEDITION PACKAGE

- 4 Point Auto-Level
- 21" 2-in-1 Oven Range
- 30" OTR Microwave
- 16 Cu. Ft. 12V Refrigerator
- Residential Backsplash

- 50+ Gallon Fresh Water Capacity
- Hi-Top Free Standing Dinette w/ 4 Chairs
- Designer Roller Shades
- Two Power Awnings (Most Models)
- Heavy Duty Slam Latch Baggage Doors
- Motion Lighting Throughout
- 2" Towing Receiver w/ 4-Way Plug (Most Models)
- King/Queen Size Bed(s)
- Extra Large Pass-Through Storage
- "Easy Clean" Floors
- Extra Wide Entry Steps
- Flush Floor, Linoleum Galley Slide-Out
- Battery Disconnect Switch

- "On The Go" Rear Ladder Prep
- Reverse Camera Prep
- Hot/Cold Outdoor Shower
- LP Quick Connect
- Tinted Windows

OPTIONS

- 2nd & 3rd 13,500 BTU A/C's
- 200W Solar Panel w/ 30 AMP Controller
- CampView Window - Mandatory Option (32LIVE, 33CHEF, 35FUN, 36MB, 402BEDS)



EACH NEW FOREST RIVER PURCHASE PROVIDES:

- ✓ Pre-delivery Inspection.
- ✓ Digital Owner's Manual.
- ✓ Free Membership to Forest River Owners Group (FROG). Learn more at www.forestriverfrog.com.
- ✓ A Contribution to Care Camps Foundation www.carecamps.org.
- ✓ 1 Year Free Roadside Assistance from Date of Purchase.



SPEC DEFINITIONS:

Scan on your smartphone to learn RV terminology and more!



LEARN MORE:

Scan this QR code with your mobile device to learn more about Forest River.



YOUR WILDCAT DEALER

All information contained in this brochure is believed to be accurate at the time of publication. However, during any model year, it may be necessary to make changes to the manufacturing process of the units and information in this brochure. Your unit may differ from the information in this brochure due to any changes in the manufacturing process and equipment. Forest River, Inc., reserves the right to make all such changes without notice, including prices, colors, combinations, materials, equipment and specifications of any model as well as the addition of new models and the discontinuance of models shown in this brochure. Therefore, please consult with your Forest River dealer and confirm the availability of any materials, combinations, designs, or specifications that are meaningful to your purchase decision. © 2024 Wildcat, a Division of Forest River, Inc., a Berkshire Hathaway Company. All Rights Reserved. Forest River, Inc. 11/24