


TRAVEL SUPREME

C SERIES PREMIER


OPTIONS

A




60-inch Theater Sofa

B



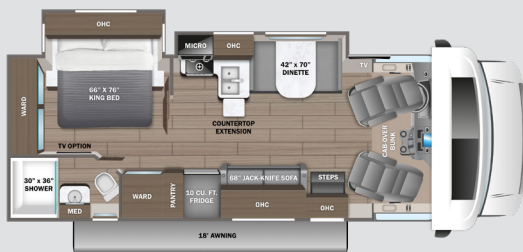
68-inch Theater Sofa

C

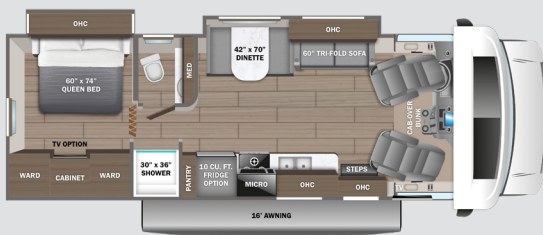


15 Cu. Ft. Fridge

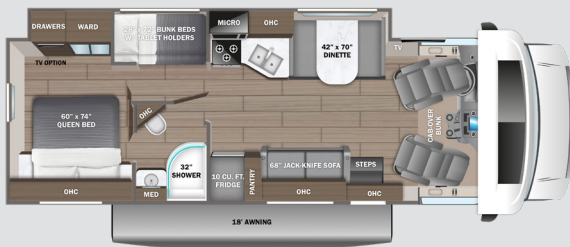
27U **OPTION: B**



29V **OPTIONS: A,C**



31F **OPTION: C**



EXTERIOR SELECTIONS



Standard Partial Paint



Aspen Full-Body Paint



Bar Harbor Full-Body Paint



Leavenworth Full-Body Paint



Sandpoint Full-Body Paint

STANDARDS & OPTIONS

CUSTOMER VALUE PACKAGE

Supreme Ride +: Computer-balanced driveshaft, Koni® FSD shocks, heavy-duty rear stabilizer bar, standard front stabilizer bar, Hellwig® helper springs, rubber isolation mounts
 One-piece, seamless fiberglass front cap
 Automotive-bonded panoramic window in front cap with power shade
 Automatic hydraulic leveling jacks
 Frameless windows
 Electric patio awning with LED lights
 Exterior LED HD Smart TV with (2) high-output, marine-grade exterior speakers
 1,000W inverter
 Chrome, heated, remote-controlled, side-view mirrors
 Sony® infotainment center with tilt/swivel, Apple® CarPlay and Android Auto™
 Backup and side-view cameras
 LED-lit, solid-surface kitchen countertops

STANDARD DRIVING EQUIPMENT

Ford® E-450 chassis
 GVWR - 14,500 lb.
 GCWR - 22,000 lb.
 7.3L V-8 325 HP engine with 450 ft.-lb. torque
 6-speed TorqShift® series transmission with overdrive
 210-amp alternator
 Catalytic converter theft deterrent
 E-rated highway tires- LT225/75R16
 Tire pressure monitoring system (TPMS)
 Power anti-lock brakes with power steering
 7,500 lb. hitch with 750 lb. tongue capacity and 7-pin plug
 12V chassis battery
 55 gal. fuel tank
 Swivel driver and passenger seats
 Tilt steering wheel
 Driver and passenger airbags
 Power windows and door locks
 Cruise control
 Hill start assist
 Electronic stability control
 Traction control
 Auxiliary start switch

STANDARD EXTERIOR EQUIPMENT

TuffShell™ vacuum-bond laminated roof, floor and sidewalls
 Bead-foam insulation (R-24 max roof, R-9 max floor, R-5 max walls)
 One-piece, seamless, fiberglass roof
 Fiberglass running boards
 Fiberglass side wings
 Fiberglass exterior walls with partial paint and vinyl graphics
 Remote keyless cab entry
 Entrance door with industry's largest travel-view window
 Electric-powered entrance step with integrated house battery compartment
 Slideout awning(s)
 Lockable storage compartments with slam latches
 Third brake light
 Roof ladder
 4 in. bumper tube sewer hose storage
 Prep for satellite dish
 Cable TV hookup with RG-6 coax
 Winegard 2.0 Wi-Fi/4G antenna
 4,000W generator with auto-gen start
 200W solar panel with dual controller and second house battery
 12V house battery
 Transfer switch with reverse polarity protection
 30-amp electrical service
 16.5 gal. propane tank (56 lb.)
 LP quick-connect hookup
 Heated holding tanks (12V pads)
 Exterior utility center
 Winterization drain system
 Black tank flush
 Outside shower
 12V demand water pump
 Water filtration system

STANDARD INTERIOR EQUIPMENT

Custom-molded ABS surround in cab-over area
 Overhead bunk with 750 lb. capacity and safety net
 Privacy curtain for cab area
 BMPRO total coach control system with wall-mounted touchscreen and mobile app
 84 in. interior ceiling height with padded vinyl ceiling

High-intensity recessed LED ceiling lights
 LED-lit fascia
 Hardwood cabinet doors and drawer fronts
 Ball-bearing drawer guides
 Blackout night roller shades
 15,000 BTU A/C with heat pump
 30,000 BTU auto-ignition furnace
 6 gal. gas/electric DSI auto-ignition water heater
 Entegra-exclusive, easy-operation legless dinette table
 2-point lap safety belts in all designated seating locations
 Car seat tethers (select floorplans)
 LED HD Smart TV in living area
 JBL® audio system
 Smoke alarm
 Carbon monoxide detector
 Fire extinguisher
 10 cu. ft. 12V refrigerator
 Furrion® all-in-one cooktop and oven
 Residential-size microwave
 Recessed stainless steel kitchen sink with solid-surface covers
 Flip-up countertop extension (select models)
 Decorative kitchen backsplash
 Pop-up charging station in kitchen with 120V outlets and USB ports
 Walk-around, queen-size bed with bedspread and nightstands (king size in 27U)
 USB port and wireless charging in nightstands
 Under-bed storage (select models)
 Large wardrobes
 Bunks with industry-exclusive 300 lb. capacity each (31F)
 Wall-mounted tablet holder in each bunk (31F)
 Shower with decorative surround, glass door, skylight and light
 Recessed stainless steel bathroom sink
 Porcelain toilet with foot flush
 Powered roof vent in bathroom with wall switch

OPTIONS

Power theater seating
 15 cu.ft. 12V refrigerator (29V)
 LED HD Smart TV in bedroom
 Dual 13,500 BTU A/C units with energy management system
 Aluminum rims
 Folding windshield sun shade

| FLOORPLAN | GVWR (lbs.) | GCWR (lbs.) | WHEEL BASE | OVERALL LENGTH | EXTERIOR HEIGHT WITH SATELLITE AND A/C | EXTERIOR WIDTH | INTERIOR HEIGHT | FRESH WATER CAPACITY (gal.) | GRAY WASTE WATER CAPACITY (gal.) | BLACK WASTE WATER CAPACITY (gal.) |
|-----------|-------------|-------------|------------|----------------|--|----------------|-----------------|-----------------------------|----------------------------------|-----------------------------------|
| 27U | 14,500 | 22,000 | 195" | 29' 11" | 11' 8" | 100" | 84" | 42.5 | 41 | 31 |
| 29V | 14,500 | 22,000 | 223" | 32' 6" | 11' 8" | 100" | 84" | 47 | 41 | 32 |
| 31F | 14,500 | 22,000 | 223" | 32' 6" | 11' 8" | 100" | 84" | 47 | 41 | 31 |

Meet your Travel Supreme Dealer

Some specs at the time of print may include estimates. For the most updated information, please visit Travel Supreme.com



Scan QR code for specification definitions



Travel Supreme Inc. | P.O. Box 460 | Middlebury, IN 46540
 See dealer for further information and prices. All information in this brochure and on www.travelsupreme.com is the latest available at the time of publication approval. Travel Supreme reserves the right to make changes and to discontinue models without notice or obligation. Photography may show optional equipment or props used for decoration purposes only. RVs built for sale in Canada may differ to conform to Canadian codes. TRAVEL SUPREME is a registered trademark of Jayco, Inc. Printed in USA 1/25 ©2025 Jayco, Inc. 2032963

Travel Supreme - Part of Jayco Family of Companies